

# 07 DAYS WEATHER FORECAST FOR COASTAL AREAS AROUND SRI LANKA


Storm Direction



WARNING

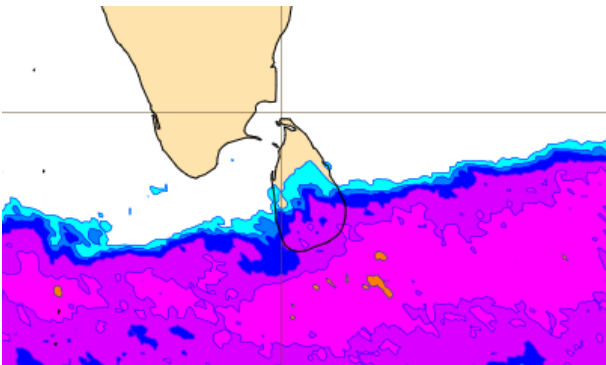
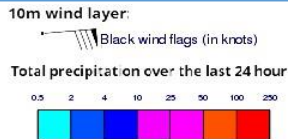


**INFORMATION FUSION CENTRE  
COLOMBO**

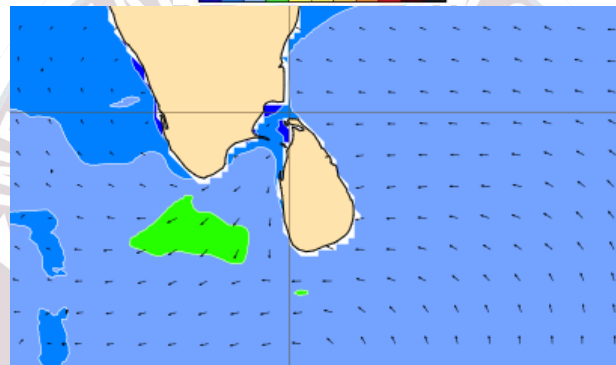
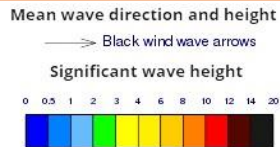


Issued at 0400 p.m. on 24<sup>th</sup> January 2025  
Marine Weather Division, National Meteorological Centre, Department of  
Meteorology, Sri Lanka

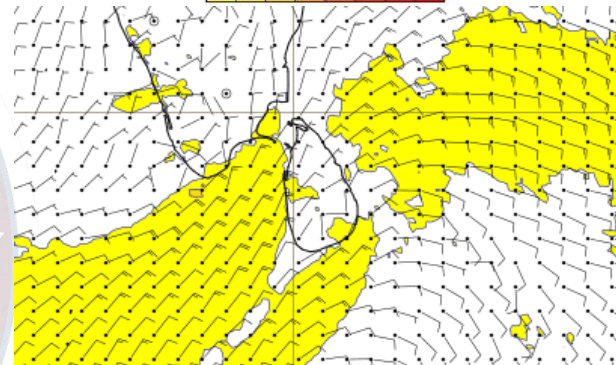
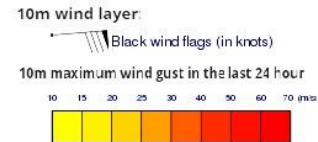
## Wind and Rainfall Forecast (Total precipitation for 24 hrs)



## Significant wave height (in meters)



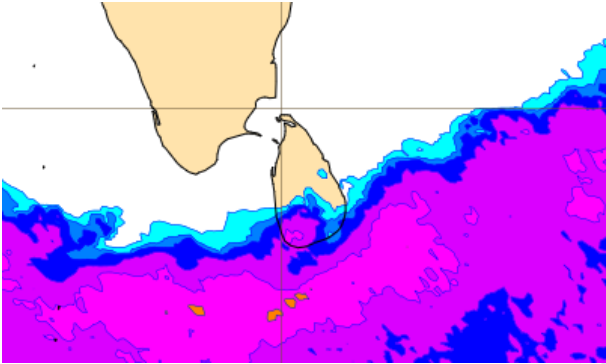
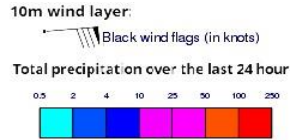
## Wind Gust (m/s)



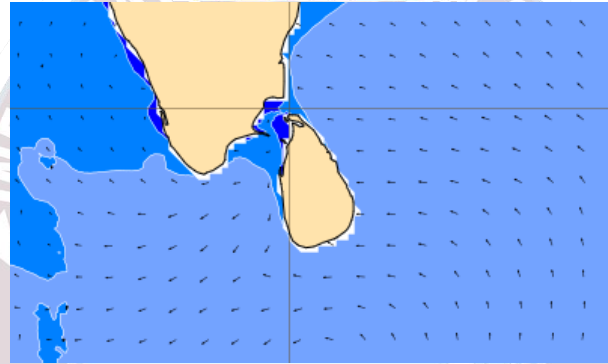
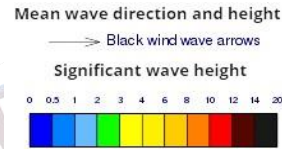
Showers or thunder showers will occur at several places in the sea areas extending from Colombo to Batticaloa via Galle and Hambantota. Showers or thunder showers will occur at few places in the sea areas around the island.

Wind speed will be (30-40) kmph. Wind speed will increase up to 50 kmph at times and the sea condition can be fairly rough at times in the sea areas extending from Colombo to Kankasanturai via Mannar and from Galle to Hambantota via Matara.

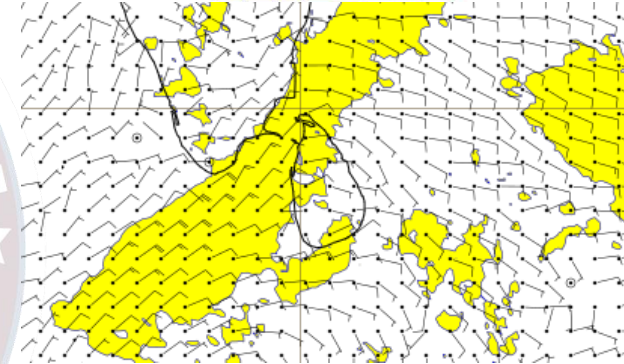
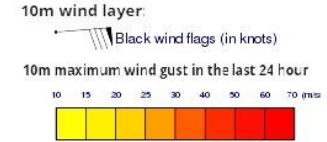
## Wind and Rainfall Forecast (Total precipitation for 24 hrs)



## Significant wave height (in meters)



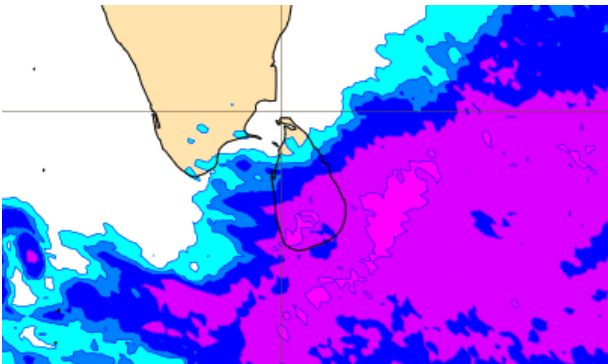
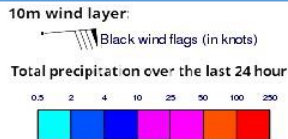
## Wind Gust (m/s)



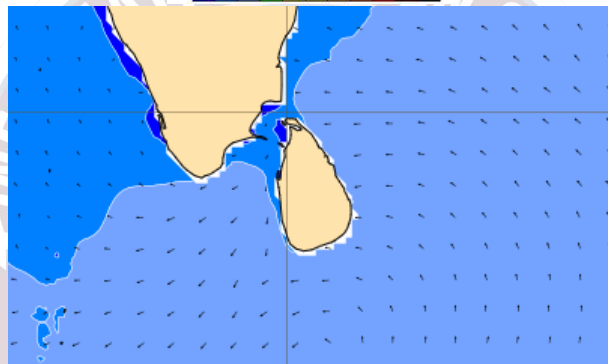
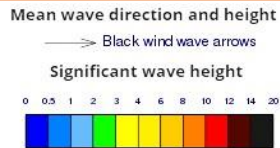
Showers or thunder showers will occur at several places the sea areas around the island

Wind speed will be (30-40) kmph. Wind speed will increase up to 50 kmph at times and the sea condition can be fairly rough at times in the sea areas extending from Mullaitivu to Pottuvil via Kankasanturai, Mannar, Colombo and Galle.

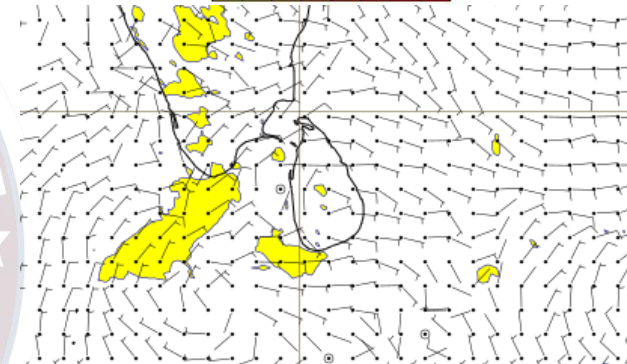
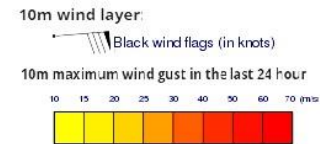
## Wind and Rainfall Forecast (Total precipitation for 24 hrs)



## Significant wave height (in meters)



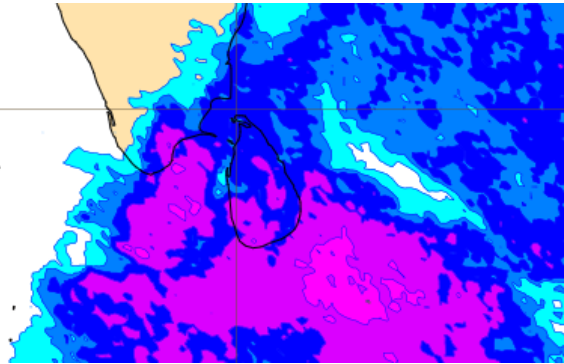
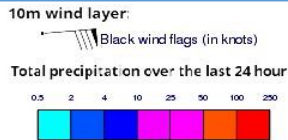
## Wind Gust (m/s)



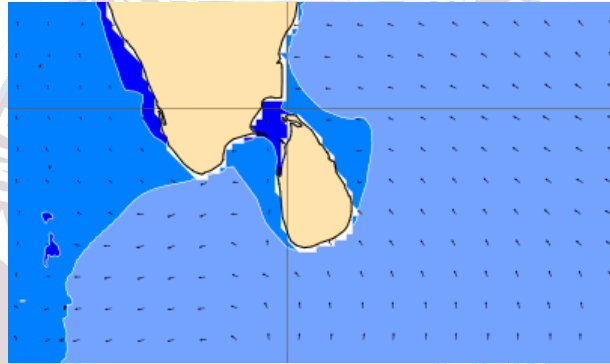
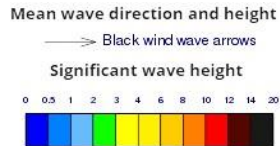
Showers or thunder showers will occur at several places in the sea areas extending from Colombo to Trincomalee via Galle, Hambantota and Batticaloa. Showers or thunder showers will occur at a few places the other sea areas around the island.

Wind speed will be (30-40) kmph. Wind speed will increase up to 45 kmph at times and the sea condition can be fairly rough at times in the sea areas extending from Galle to Matara.

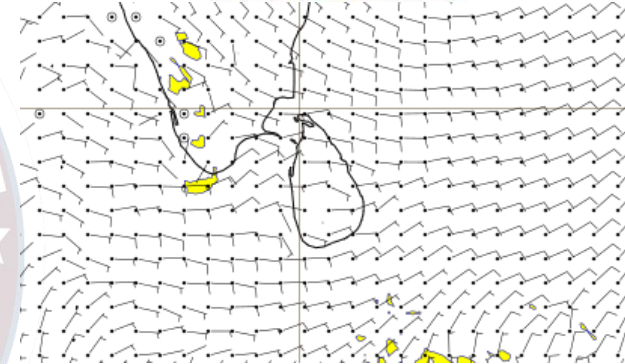
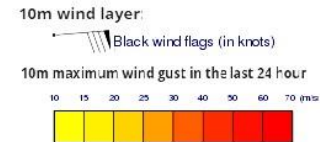
## Wind and Rainfall Forecast (Total precipitation for 24 hrs)



## Significant wave height (in meters)



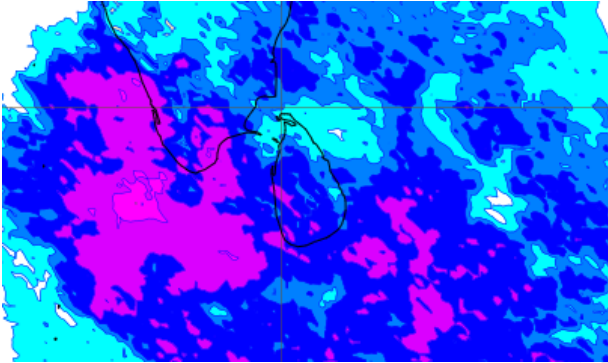
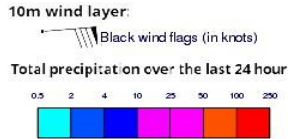
## Wind Gust (m/s)



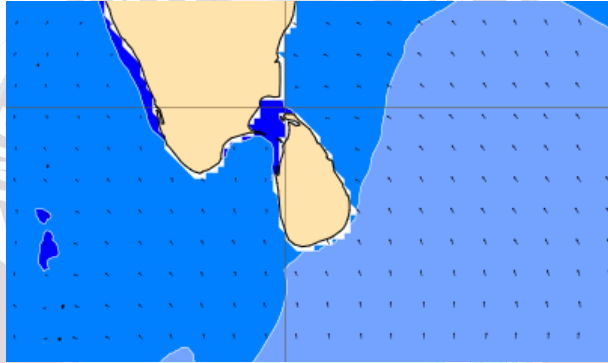
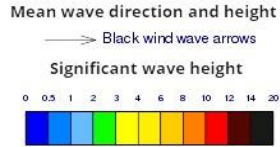
Showers or thunder showers will occur at several places in the sea areas extending from Colombo to Trincomalee via Galle, Hambantota and Batticaloa. Showers or thunder showers will occur at a few places the other sea areas around the island.

Wind speed will be (30-40) kmph.

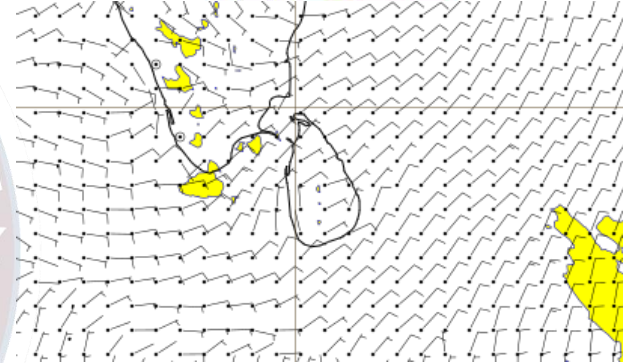
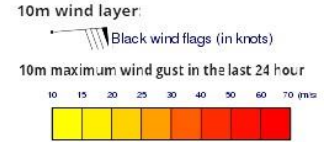
## Wind and Rainfall Forecast (Total precipitation for 24 hrs)



## Significant wave height (in meters)

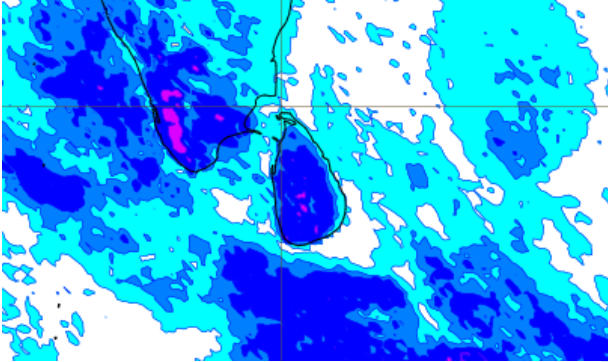
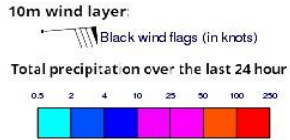


## Wind Gust (m/s)

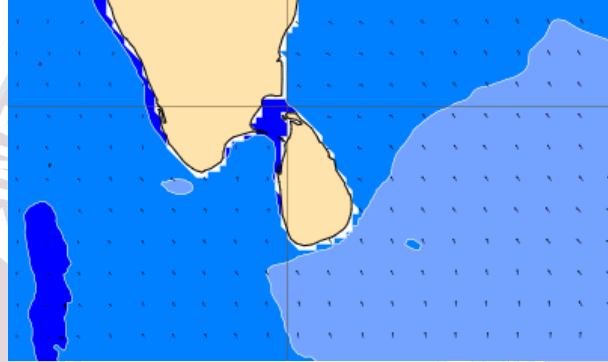
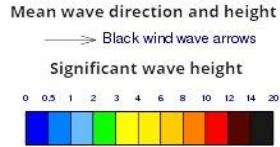


Showers or thunder showers will occur at several places the sea areas around the island. Wind speed will be (20-30) kmph.

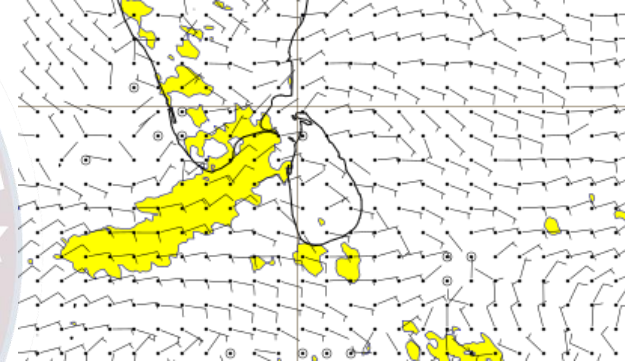
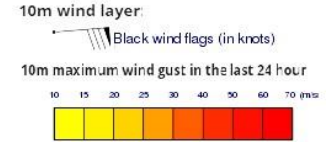
## Wind and Rainfall Forecast (Total precipitation for 24 hrs)



## Significant wave height (in meters)



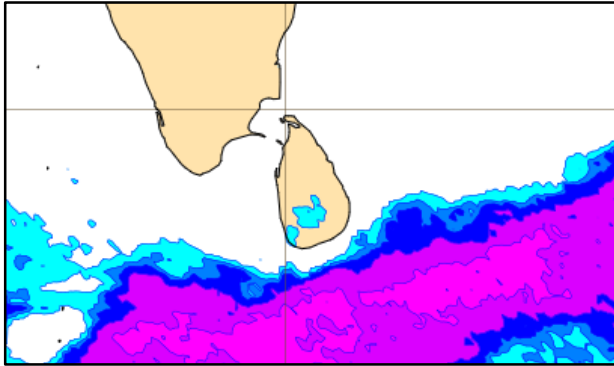
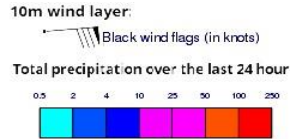
## Wind Gust (m/s)



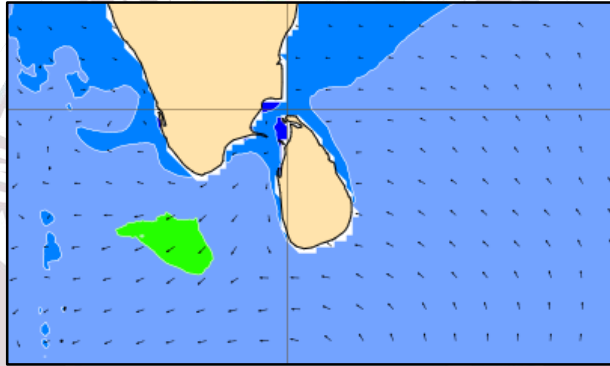
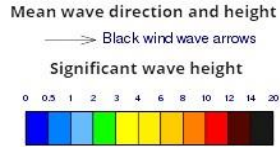
Showers or thunder showers will occur at a few places the sea areas around the island. Wind speed will be (20-30) kmph.



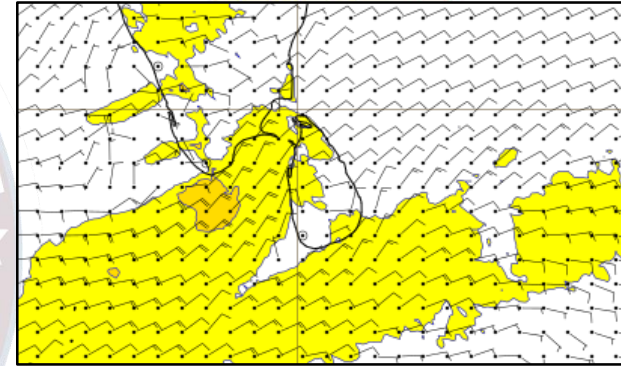
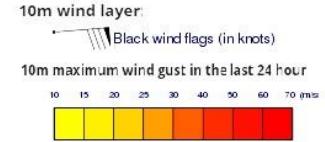
## Wind and Rainfall Forecast (Total precipitation for 24 hrs)



## Significant wave height (in meters)



## Wind Gust (m/s)



Showers or thunder showers will occur at several places the sea areas around the island

Wind speed will be (30-40) kmph. Wind speed will increase up to 50 kmph at times and the sea condition can be fairly rough at times in the sea areas extending from Colombo to Kankasanturai via Mannar and from Galle to Hambantota via Matara.



Thank you!