

07 DAYS WEATHER FORECAST FOR COASTAL AREAS AROUND SRI LANKA


Storm Direction



WARNING

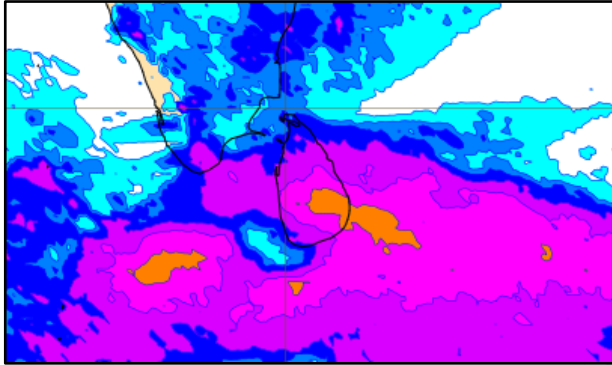
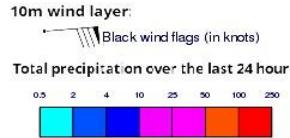


**INFORMATION FUSION CENTRE
COLOMBO**

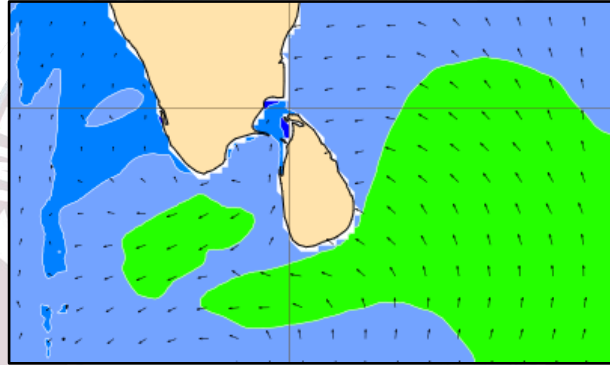
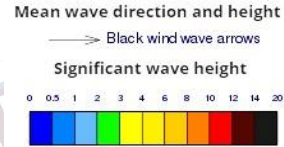


Issued at 0400 p.m. on 17th January 2025
Marine Weather Division, National Meteorological Centre, Department of
Meteorology, Sri Lanka

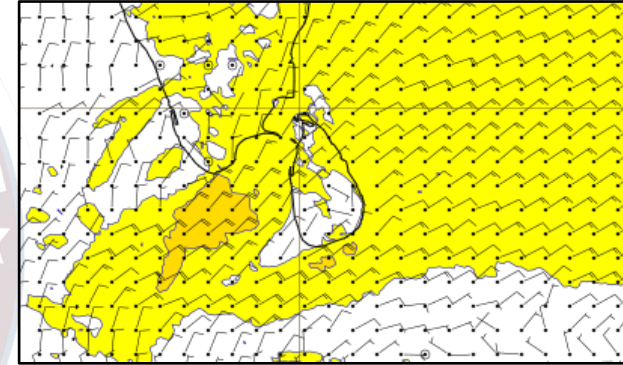
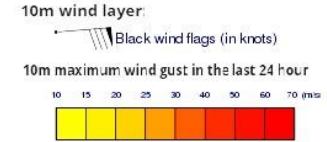
Wind and Rainfall Forecast (Total precipitation for 24 hrs)



Significant wave height (in meters)



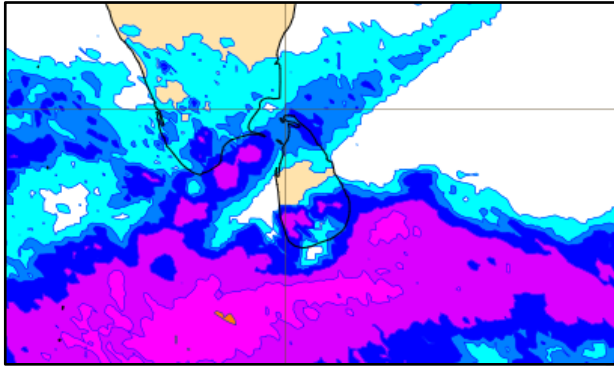
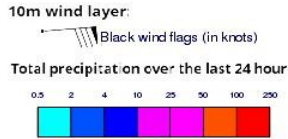
Wind Gust (m/s)



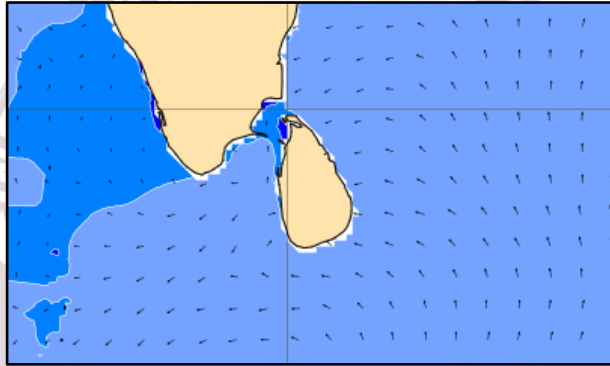
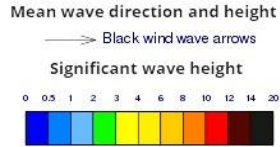
Showers or thunder showers will occur at several places the sea areas around the island

Wind speed will be (30-40) kmph. Wind speed will increase up to 60 kmph at times and the sea condition can be rough at times in the sea areas extending from Colombo to Kankasanturai via Mannar and from Galle to Hambantota via Matara. Wind speed will increase up to 50 kmph at times and the sea condition can be fairly rough at times in the other sea areas around the island.

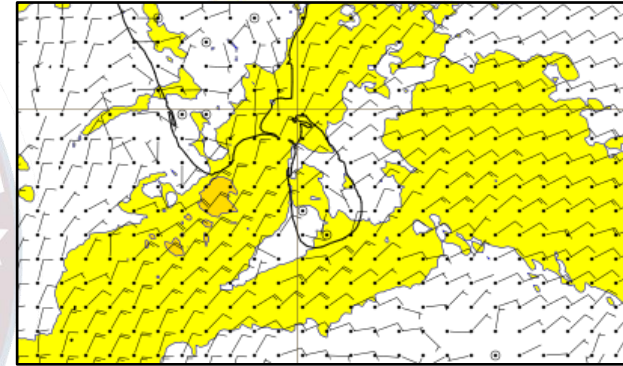
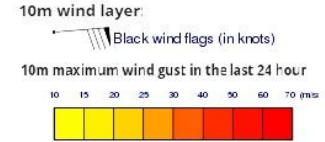
Wind and Rainfall Forecast (Total precipitation for 24 hrs)



Significant wave height (in meters)



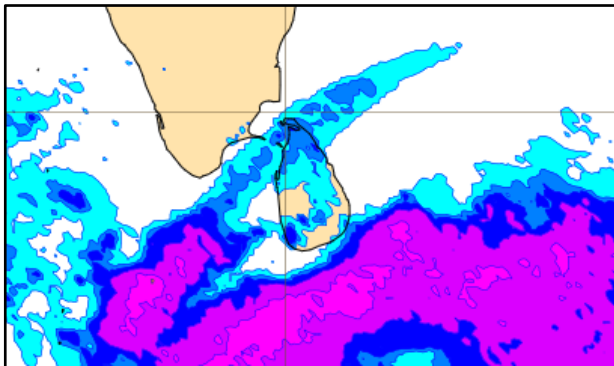
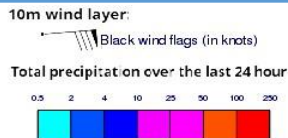
Wind Gust (m/s)



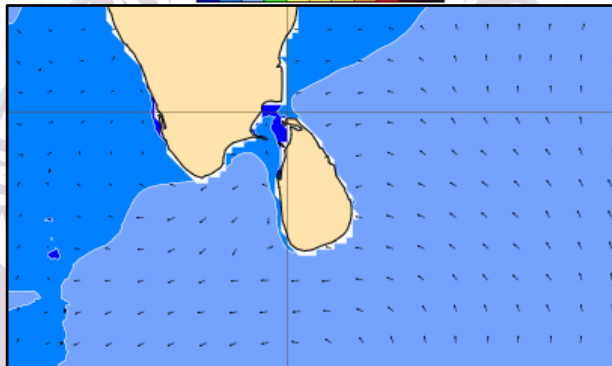
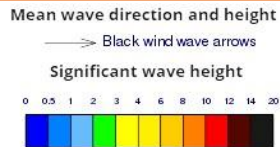
Showers or thunder showers will occur at several places the sea areas around the island

Wind speed will be (30-40) kmph. Wind speed will increase up to 50 kmph at times and the sea condition can be fairly rough at times in the sea areas extending from Mullaitivu to Pottuvil via Kankasanturai, Mannar, Colombo and Galle.

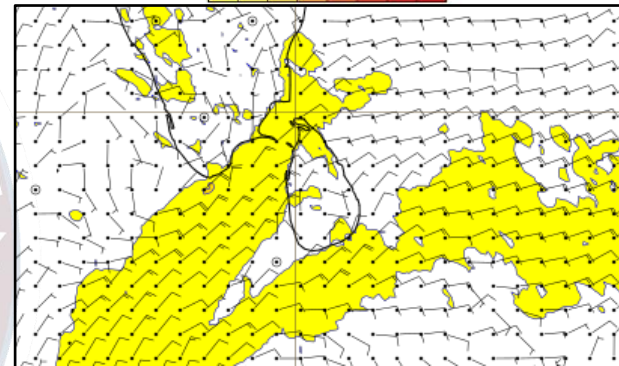
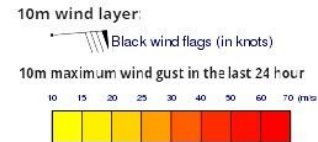
Wind and Rainfall Forecast (Total precipitation for 24 hrs)



Significant wave height (in meters)



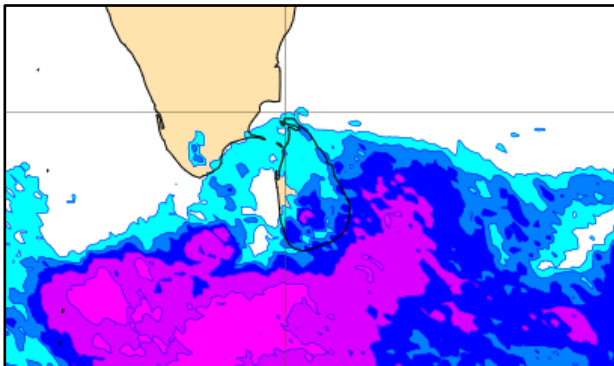
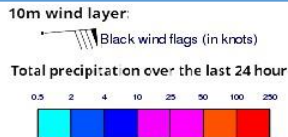
Wind Gust (m/s)



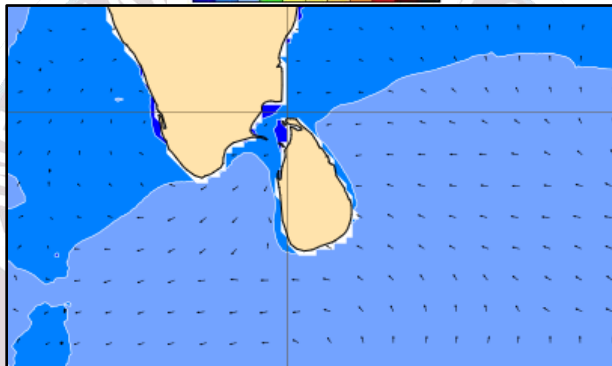
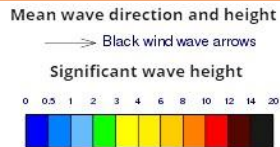
Showers or thunder showers will occur at several places the sea areas around the island

Wind speed will be (30-40) kmph. Wind speed will increase up to 50 kmph at times and the sea condition can be fairly rough at times in the sea areas extending from Mullaitivu to Pottuvil via Kankasanturai, Mannar, Colombo and Galle.

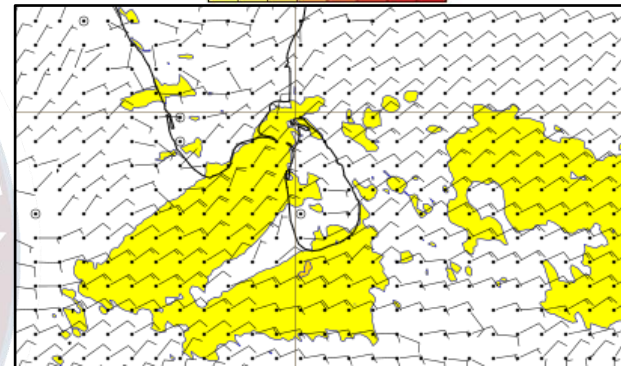
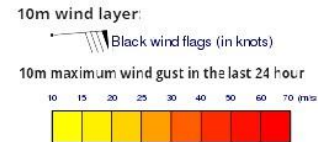
Wind and Rainfall Forecast (Total precipitation for 24 hrs)



Significant wave height (in meters)



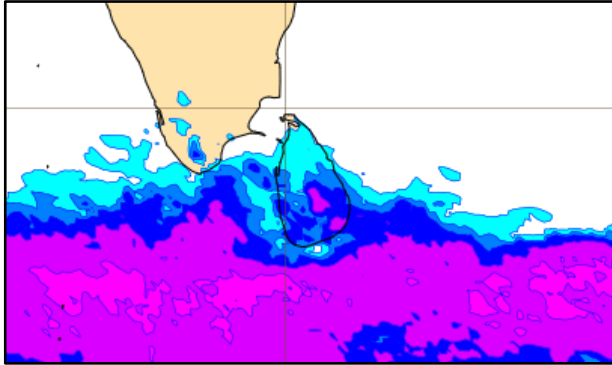
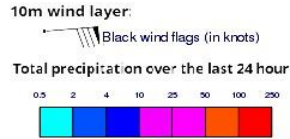
Wind Gust (m/s)



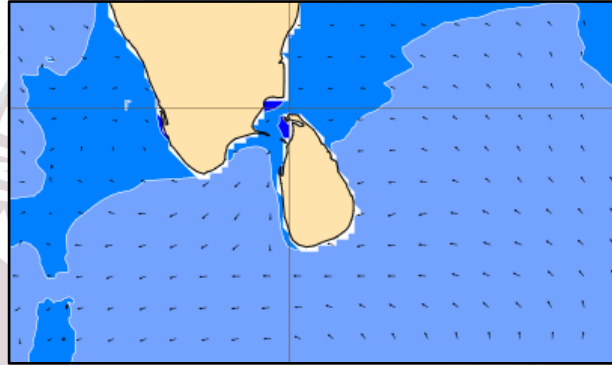
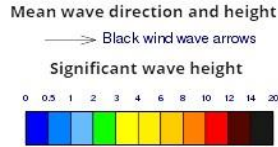
Showers or thunder showers will occur at several places the sea areas around the island

Wind speed will be (30-40) kmph. Wind speed will increase up to 50 kmph at times and the sea condition can be fairly rough at times in the sea areas extending from Kankasanturai to Pottuvil via, Mannar, Colombo and Galle.

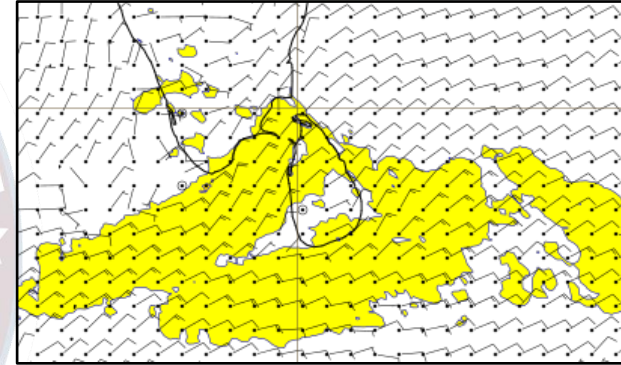
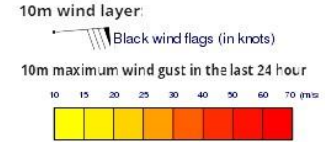
Wind and Rainfall Forecast (Total precipitation for 24 hrs)



Significant wave height (in meters)



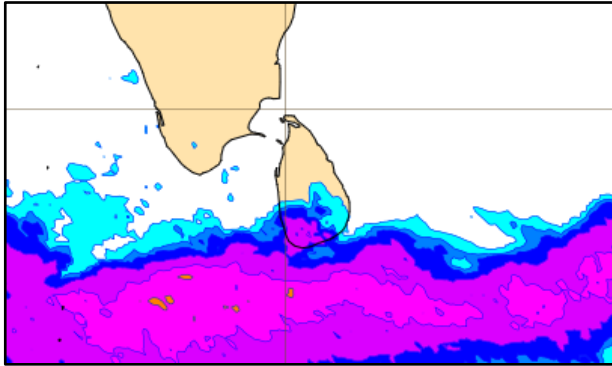
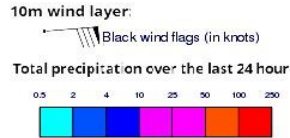
Wind Gust (m/s)



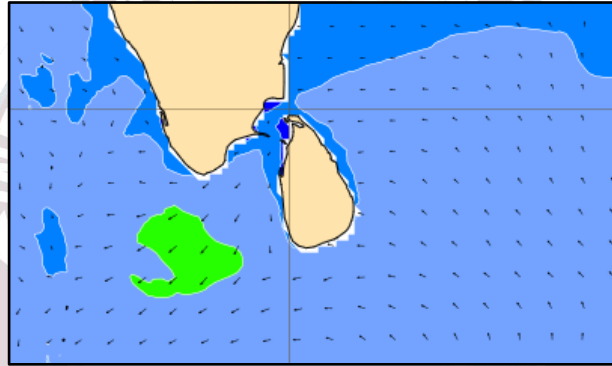
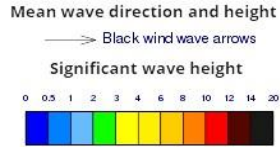
Showers or thunder showers will occur at several places the sea areas around the island

Wind speed will be (30-40) kmph. Wind speed will increase up to 50 kmph at times and the sea condition can be fairly rough at times in the sea areas around the island.

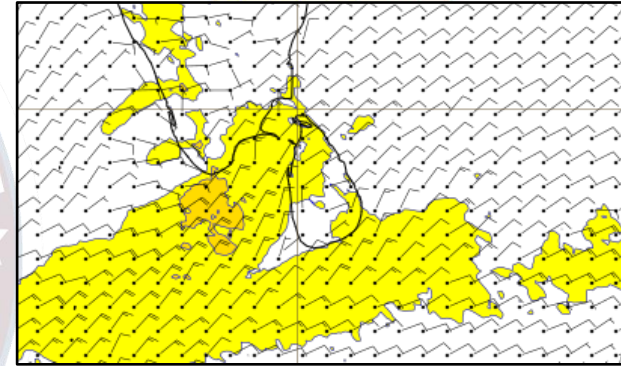
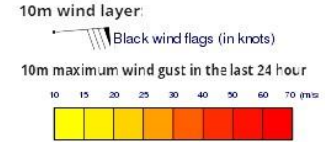
Wind and Rainfall Forecast (Total precipitation for 24 hrs)



Significant wave height (in meters)



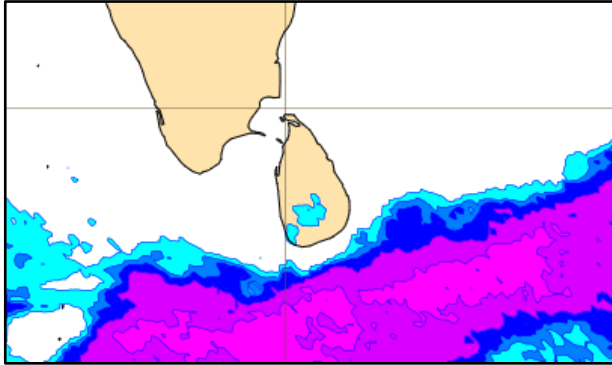
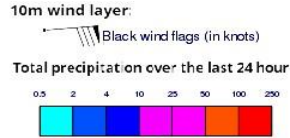
Wind Gust (m/s)



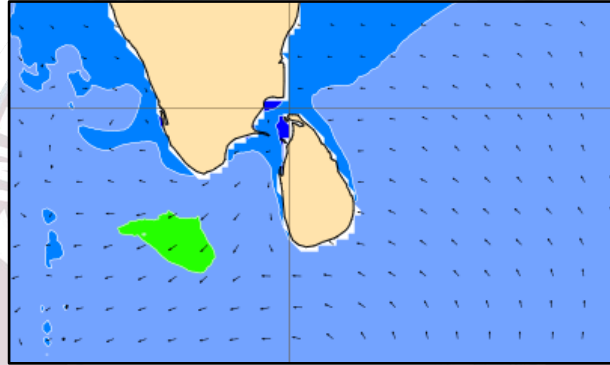
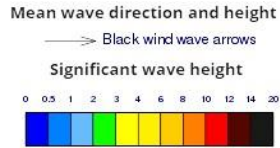
Showers or thunder showers will occur at several places the sea areas around the island

Wind speed will be (30-40) kmph. Wind speed will increase up to 50 kmph at times and the sea condition can be fairly rough at times in the sea areas extending from Colombo to Kankasanturai via Mannar and from Galle to Hambantota via Matara.

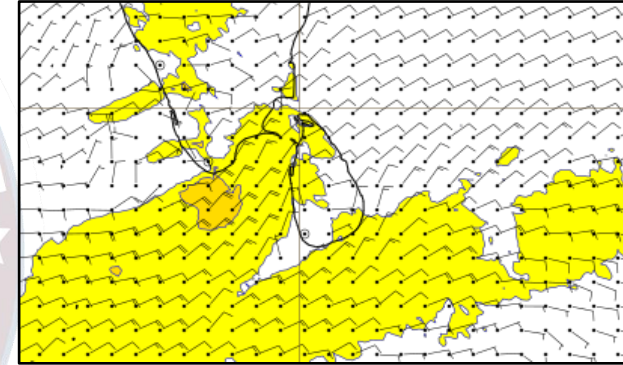
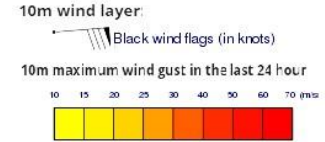
Wind and Rainfall Forecast (Total precipitation for 24 hrs)



Significant wave height (in meters)



Wind Gust (m/s)



Showers or thunder showers will occur at several places the sea areas around the island

Wind speed will be (30-40) kmph. Wind speed will increase up to 50 kmph at times and the sea condition can be fairly rough at times in the sea areas extending from Colombo to Kankasanturai via Mannar and from Galle to Hambantota via Matara.



Thank you!