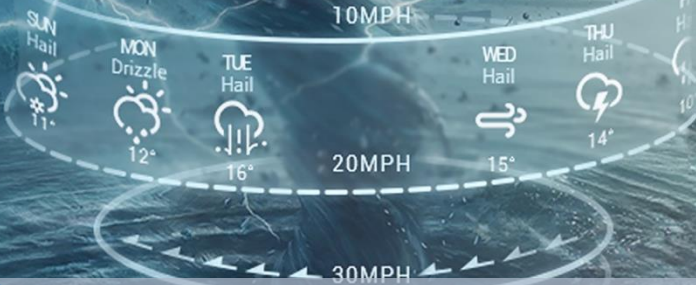


# 08 DAYS WEATHER FORECAST FOR COASTAL AREAS AROUND SRI LANKA


Storm Direction



WARNING

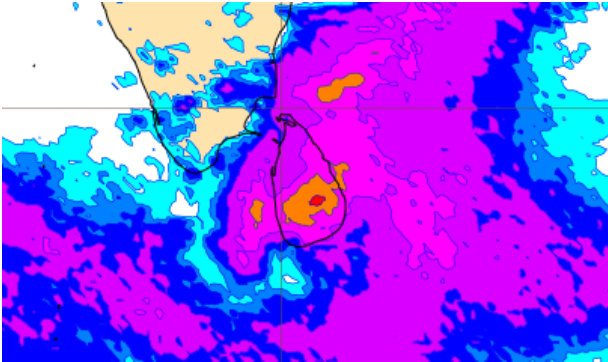
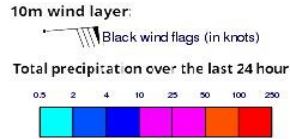


**INFORMATION FUSION CENTRE  
COLOMBO**

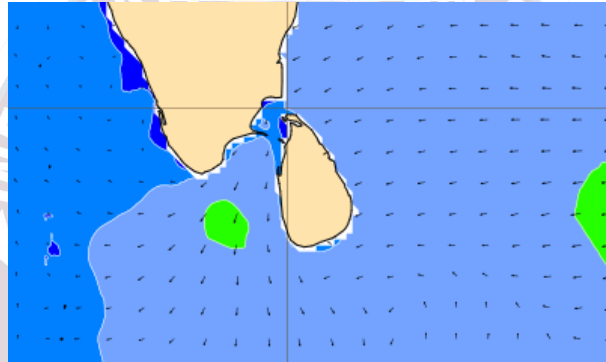
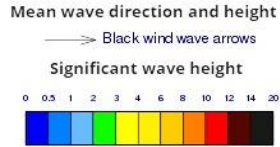


Issued at 0400 p.m. on 10<sup>th</sup> January 2025  
Marine Weather Division, National Meteorological Centre, Department of  
Meteorology, Sri Lanka

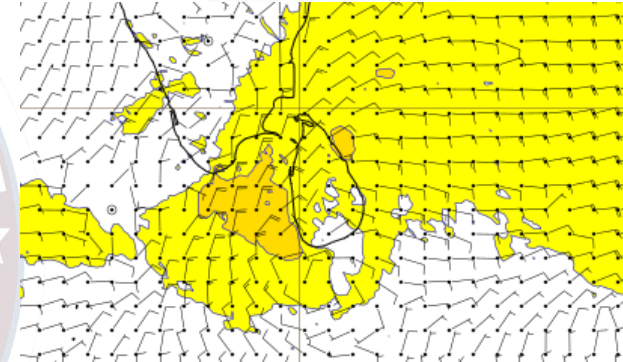
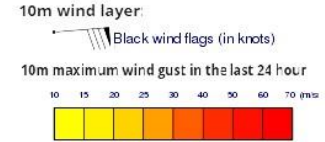
## Wind and Rainfall Forecast (Total precipitation for 24 hrs)



## Significant wave height (in meters)



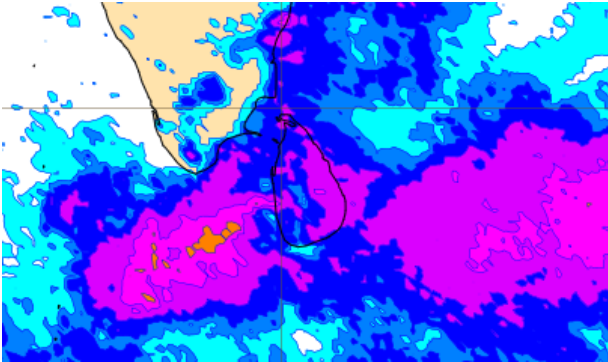
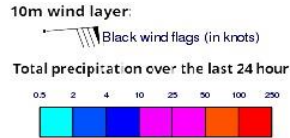
## Wind Gust (m/s)



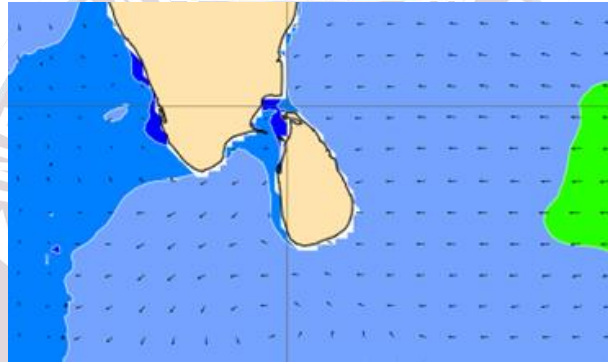
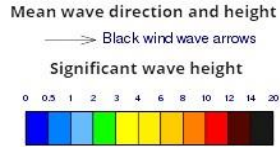
Showers or thunder showers will occur at several places the sea areas around the island  
 Wind speed will be (30-40) kmph. Wind speed will increase up to 60 kmph at times and the sea condition can be rough at times in the sea areas extending from Colombo to Mannar via Puttalam and from Mullaitivu to Trincomalee. Wind speed will increase up to 50 kmph at times and the sea condition can be fairly rough at times in the sea areas extending from Mannar to Kankasanturai and from Hambantota via Trincomalee and from Colombo to Galle via Kaluthara.



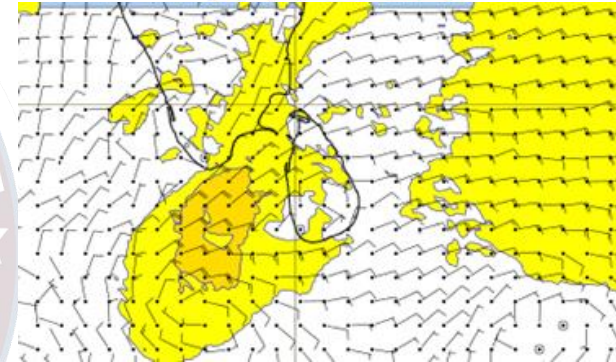
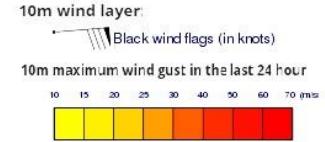
## Wind and Rainfall Forecast (Total precipitation for 24 hrs)



## Significant wave height (in meters)



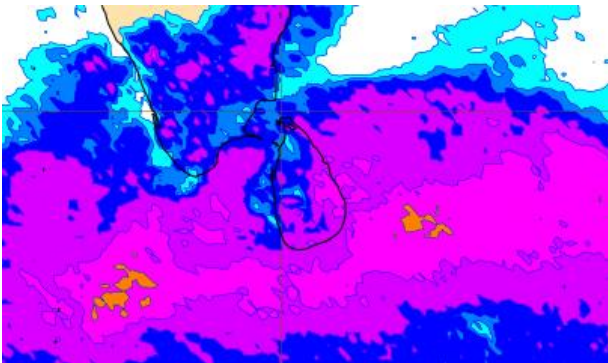
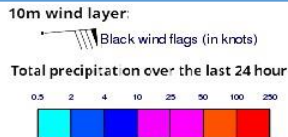
## Wind Gust (m/s)



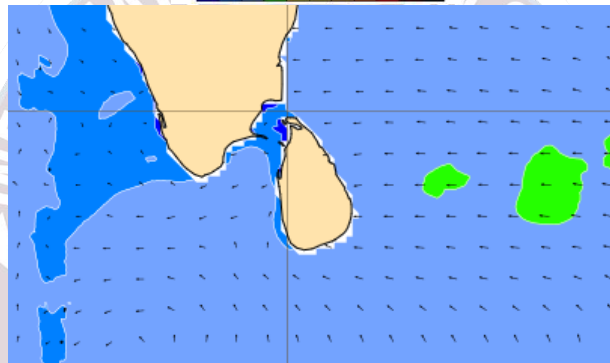
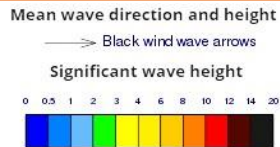
Showers or thunder showers will occur at several places the sea areas around the island

Wind speed will be (30-40) kmph. Wind speed will increase up to 60 kmph at times and the sea condition can be rough at times in the sea areas extending from Colombo to Mannar via Puttalam. Wind speed will increase up to 50 kmph at times and the sea condition can be fairly rough at times in the sea areas extending from Mannar to Kankasanturai and from Colombo to Matara via Galle.

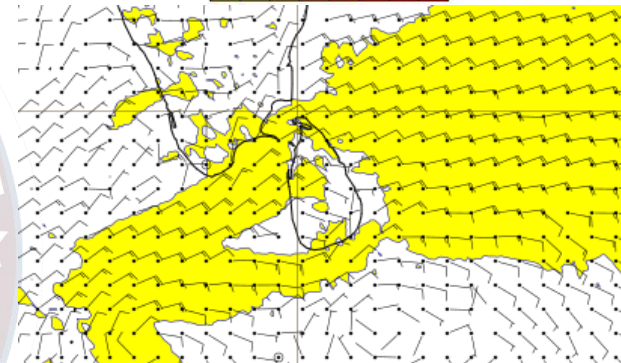
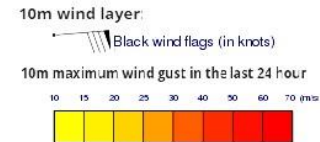
## Wind and Rainfall Forecast (Total precipitation for 24 hrs)



## Significant wave height (in meters)



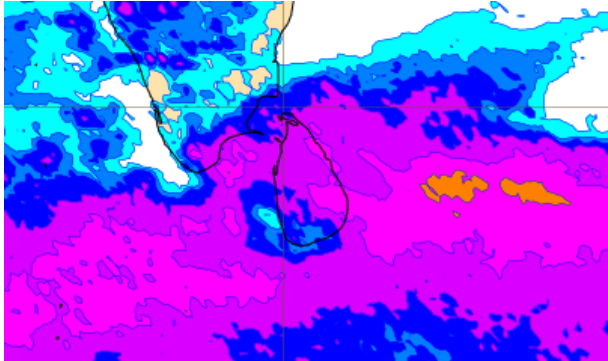
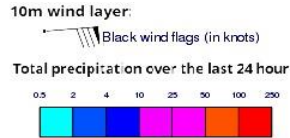
## Wind Gust (m/s)



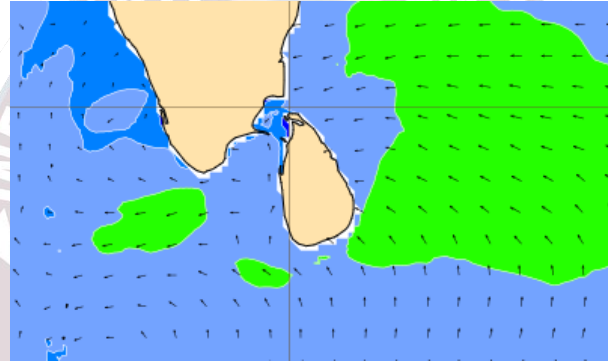
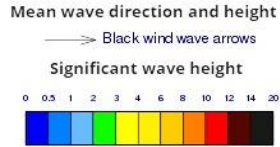
Showers or thunder showers will occur at several places the sea areas around the island

Wind speed will be (30-40) kmph. Wind speed will increase up to 50 kmph at times and the sea condition can be fairly rough at times in the sea areas around the island.

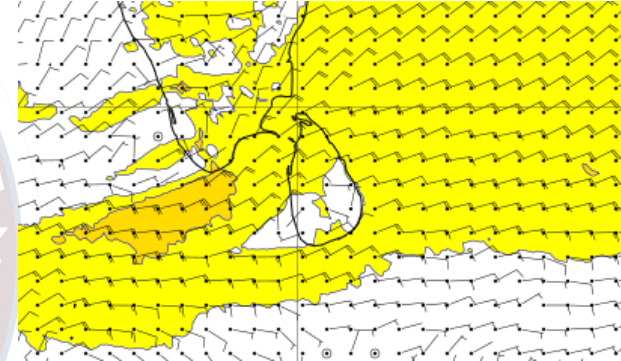
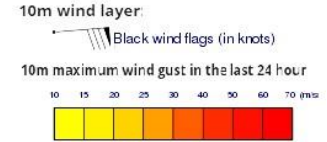
## Wind and Rainfall Forecast (Total precipitation for 24 hrs)



## Significant wave height (in meters)



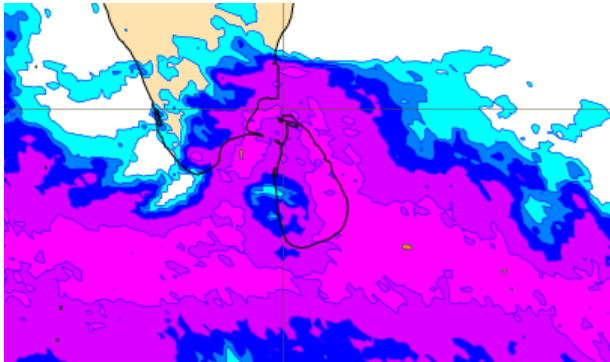
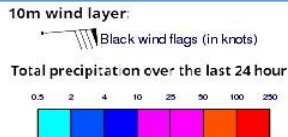
## Wind Gust (m/s)



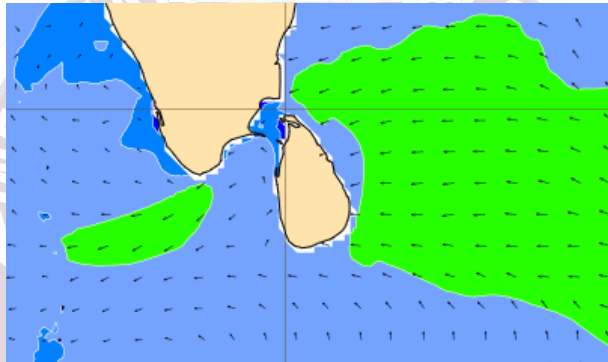
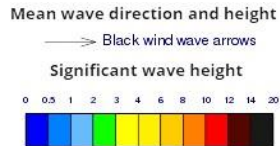
Showers or thunder showers will occur at several places the sea areas around the island

Wind speed will be (30-40) kmph. Wind speed will increase up to 50 kmph at times and the sea condition can be fairly rough at times in the sea areas around the island.

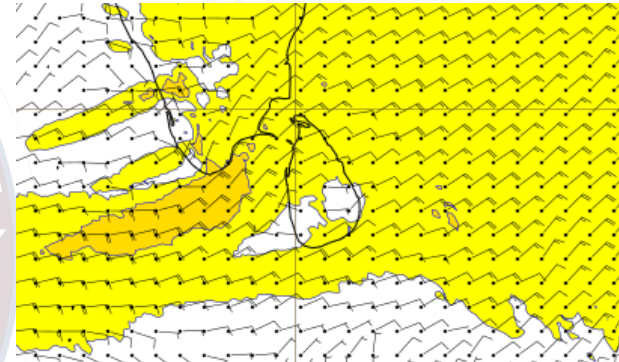
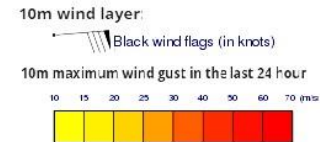
## Wind and Rainfall Forecast (Total precipitation for 24 hrs)



## Significant wave height (in meters)



## Wind Gust (m/s)

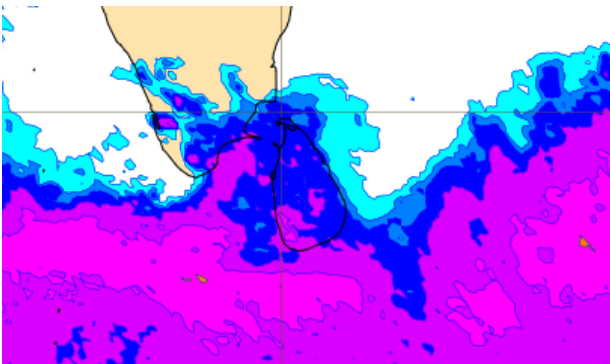
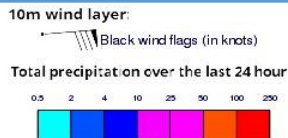


Showers or thunder showers will occur at several places the sea areas around the island

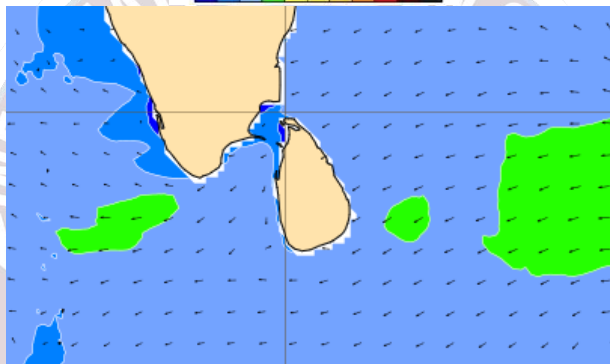
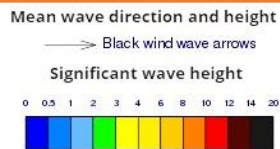
Wind speed will be (30-40) kmph. Wind speed will increase up to 50 kmph at times and the sea condition can be fairly rough at times in the sea areas around the island.



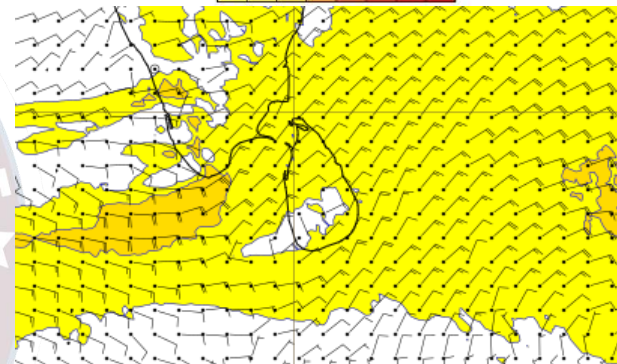
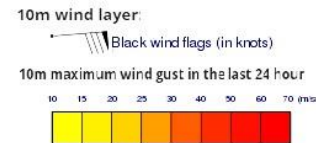
## Wind and Rainfall Forecast (Total precipitation for 24 hrs)



## Significant wave height (in meters)



## Wind Gust (m/s)

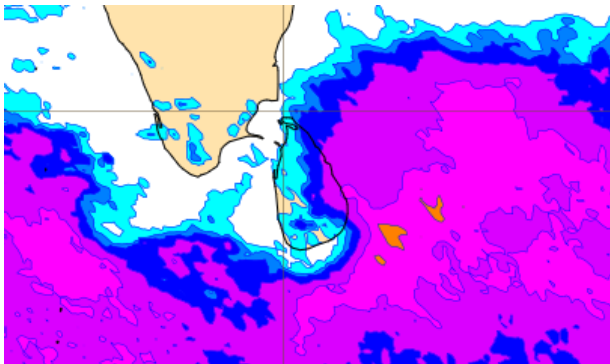
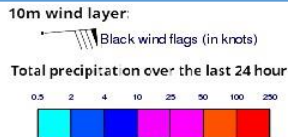


Showers or thunder showers will occur at several places the sea areas around the island

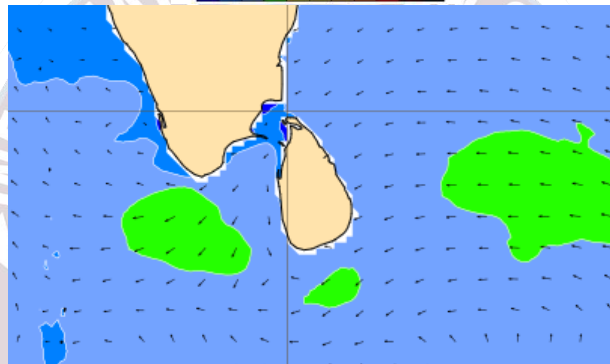
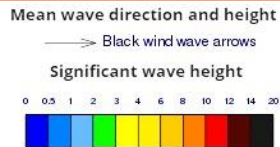
Wind speed will be (30-40) kmph. Wind speed will increase up to 50 kmph at times and the sea condition can be fairly rough at times in the sea areas around the island.



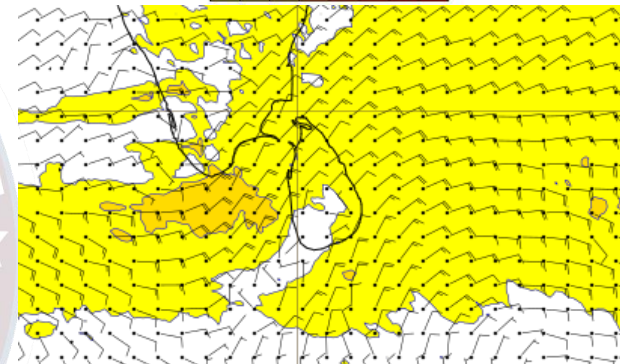
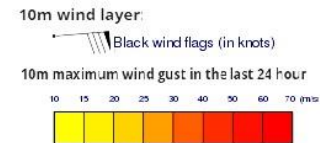
## Wind and Rainfall Forecast (Total precipitation for 24 hrs)



## Significant wave height (in meters)



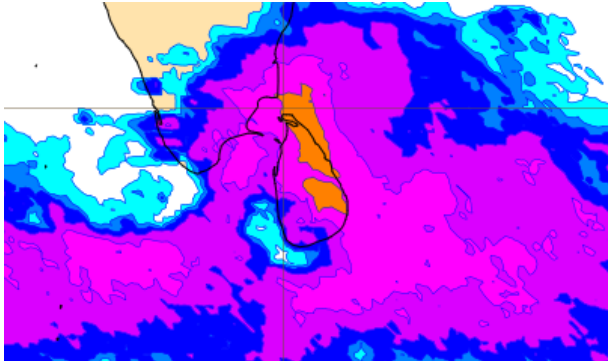
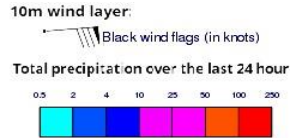
## Wind Gust (m/s)



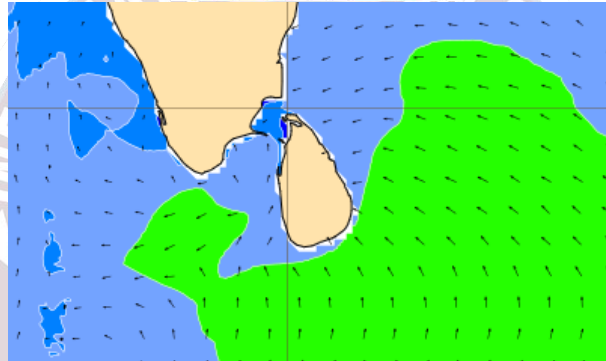
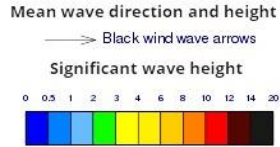
Showers or thunder showers will occur at several places the sea areas around the island

Wind speed will be (30-40) kmph. Wind speed will increase up to 60 kmph at times and the sea condition can be rough at times in the sea areas extending from Colombo to Puttalam. Wind speed will increase up to 50 kmph at times and the sea condition can be fairly rough at times in the other sea areas around the island.

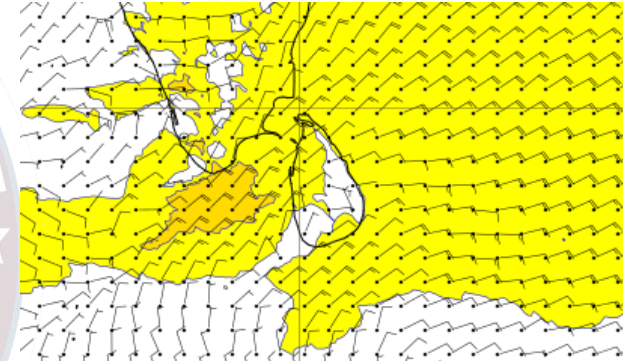
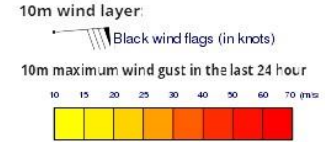
## Wind and Rainfall Forecast (Total precipitation for 24 hrs)



## Significant wave height (in meters)



## Wind Gust (m/s)



Showers or thunder showers will occur at several places the sea areas around the island

Wind speed will be (30-40) kmph. Wind speed will increase up to 60 kmph at times and the sea condition can be rough at times in the sea areas extending from Colombo to Puttalam. Wind speed will increase up to 50 kmph at times and the sea condition can be fairly rough at times in the other sea areas around the island.



Thank you!