

# 08 DAYS WEATHER FORECAST FOR COASTAL AREAS AROUND SRI LANKA

Storm Direction




WARNING



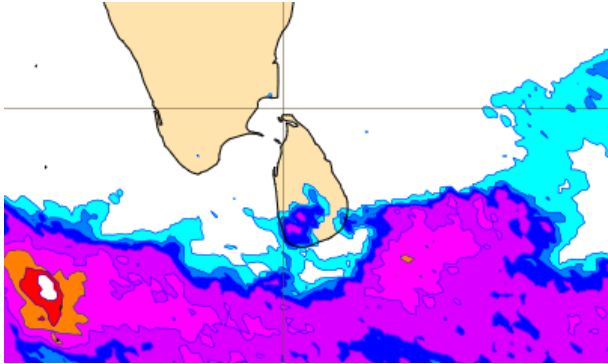
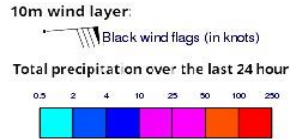
**INFORMATION FUSION CENTRE  
COLOMBO**

Know weather before it comes

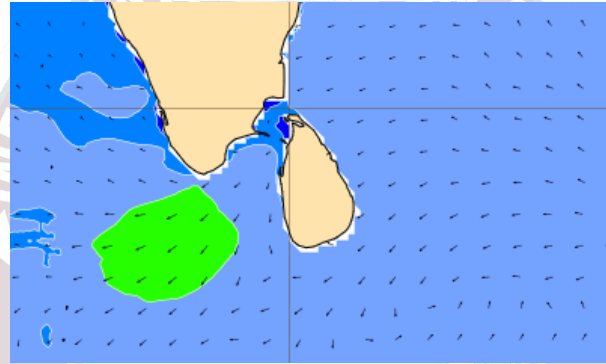
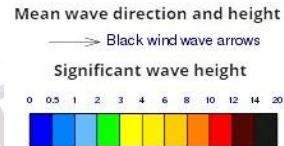


Issued at 0400 p.m. on 02<sup>rd</sup> January 2025  
Marine Weather Division, National Meteorological Centre, Department of  
Meteorology, Sri Lanka

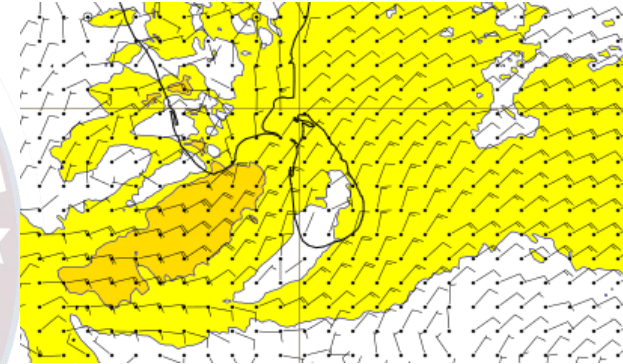
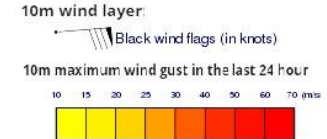
## Wind and Rainfall Forecast (Total precipitation for 24 hrs)



## Significant wave height (in meters)



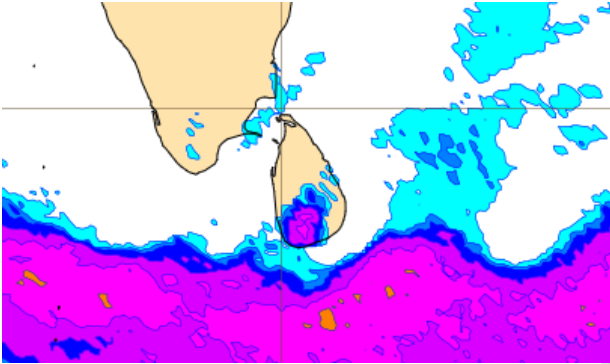
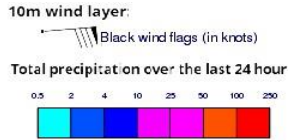
## Wind Gust (m/s)



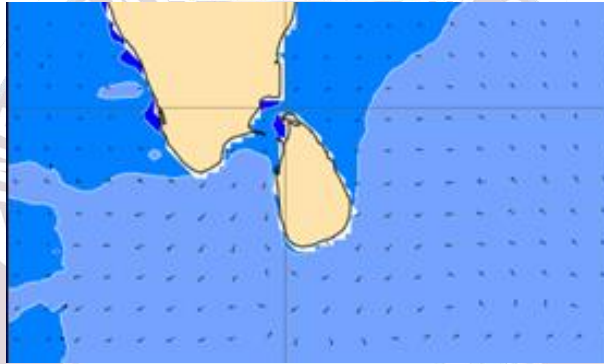
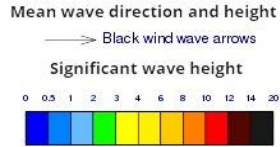
Mainly fair weather will prevail in the sea areas around the island except from showers or thunder showers at few places from Colombo to Galle.

Wind speed will be (30-40) kmph. Wind speed will increase up to 60 kmph at times and the sea condition can be rough at times in the sea areas off the coast extending from Mannar to Colombo via Puttalam. Wind speed will increase up to 50 kmph at times and the sea condition can be fairly rough at times in the other sea areas around the island.

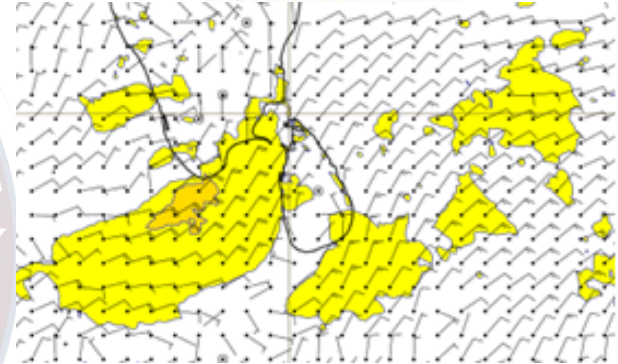
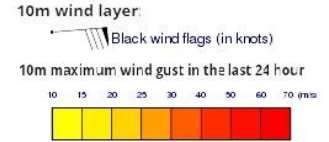
## Wind and Rainfall Forecast (Total precipitation for 24 hrs)



## Significant wave height (in meters)



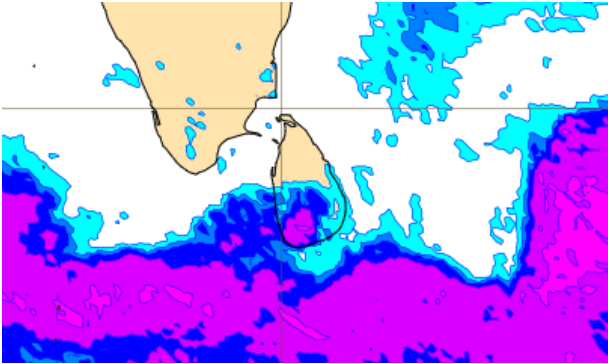
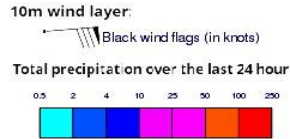
## Wind Gust (m/s)



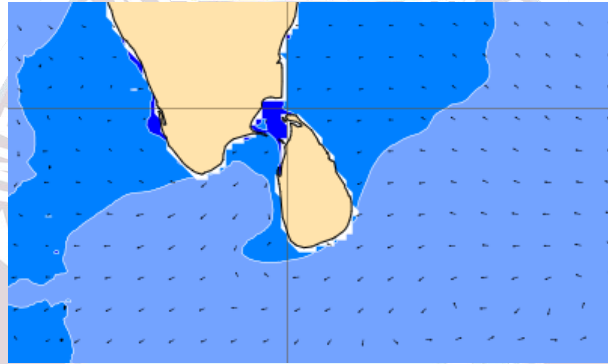
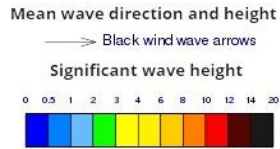
Mainly fair weather will prevail in the sea areas around the island except from showers or thunder showers at few places from Colombo to Galle.

Wind speed will be (25-35) kmph. Wind speed will increase up to 45-50 kmph at times and the sea condition can be fairly rough at times in the sea areas extending from Kankasanturai to Colombo via Puttalam and from Hambantota to Pottuvil.

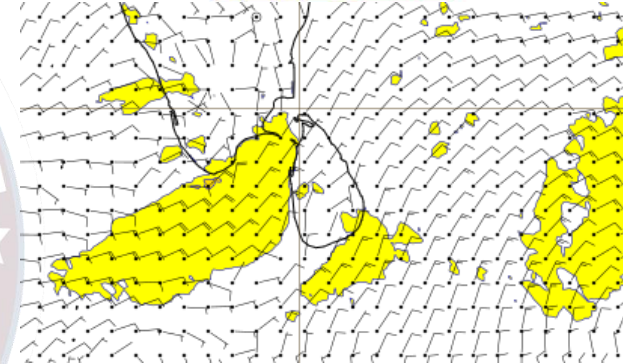
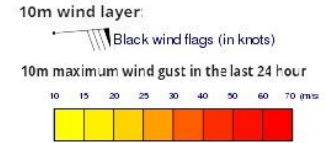
## Wind and Rainfall Forecast (Total precipitation for 24 hrs)



## Significant wave height (in meters)



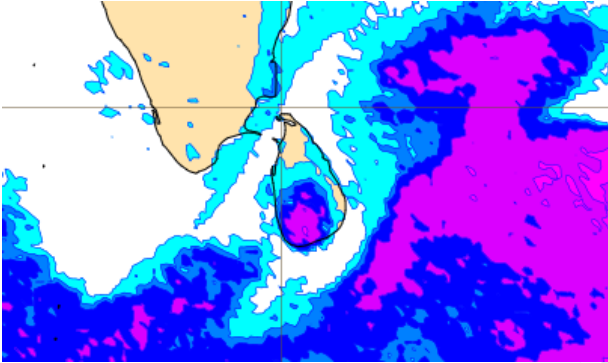
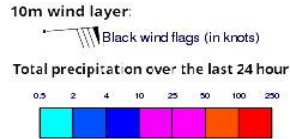
## Wind Gust (m/s)



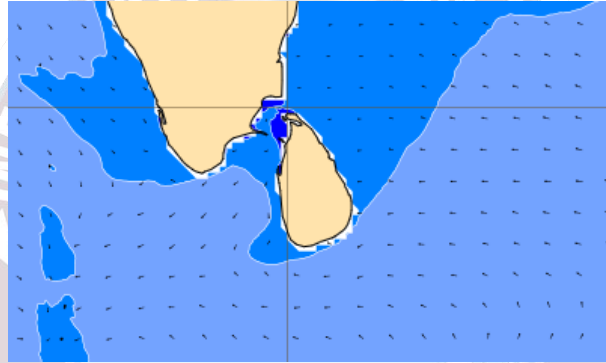
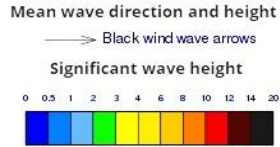
Mainly fair weather will prevail in the sea areas around the island except from showers or thunder showers at few places from Colombo to Hambantota via Galle.

Wind speed will be (25-35) kmph. Wind speed will increase up to 45-50 kmph at times and the sea condition can be fairly rough at times in the sea areas extending from Kankasanturai to Colombo via Puttalam and from Hambantota to Pottuvil.

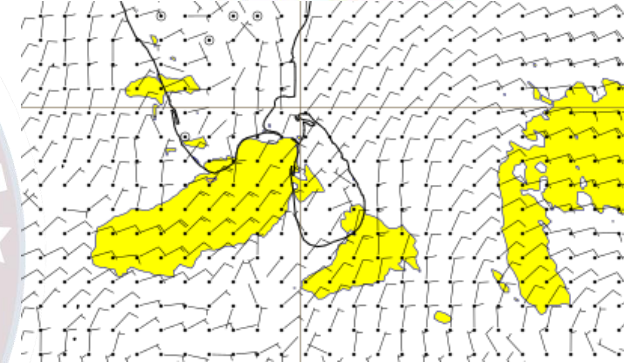
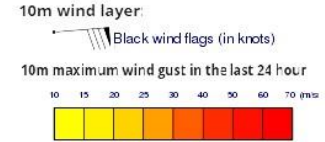
## Wind and Rainfall Forecast (Total precipitation for 24 hrs)



## Significant wave height (in meters)



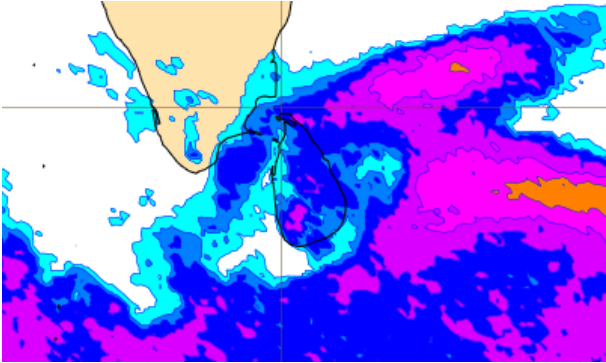
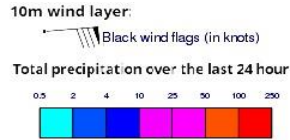
## Wind Gust (m/s)



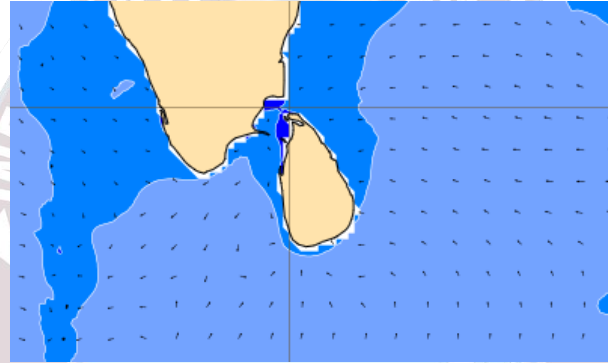
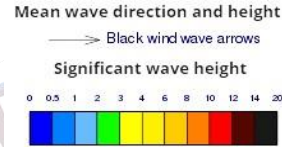
Mainly fair weather will prevail in the sea areas around the island.

Wind speed will be (25-35) kmph. Wind speed will increase up to 45-50 kmph at times and the sea condition can be fairly rough at times in the sea areas extending from Mannar to Colombo via Puttalam.

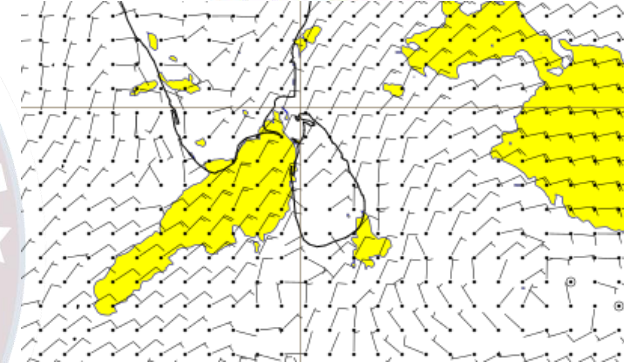
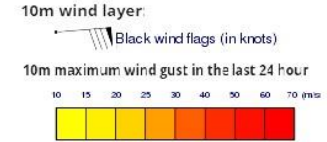
## Wind and Rainfall Forecast (Total precipitation for 24 hrs)



## Significant wave height (in meters)



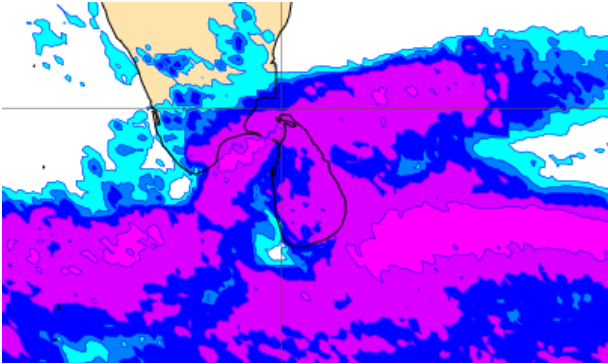
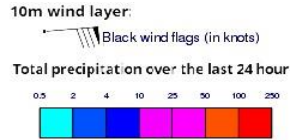
## Wind Gust (m/s)



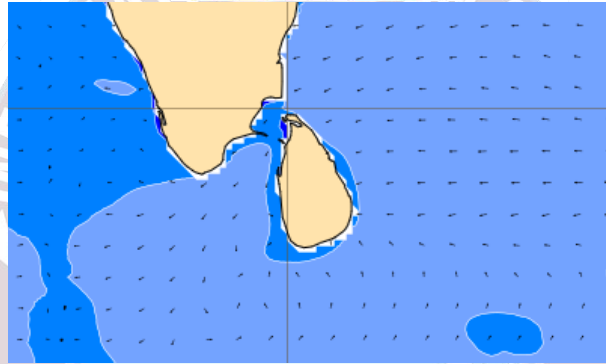
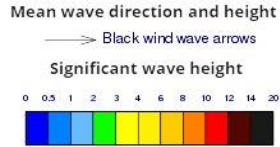
Showers or thunder showers will occur at several places the sea areas around the island

Wind speed will be (25-35) kmph. Wind speed will increase up to 45-50 kmph at times and the sea condition can be fairly rough at times in the sea areas extending from Mannar to Colombo via Puttalam.

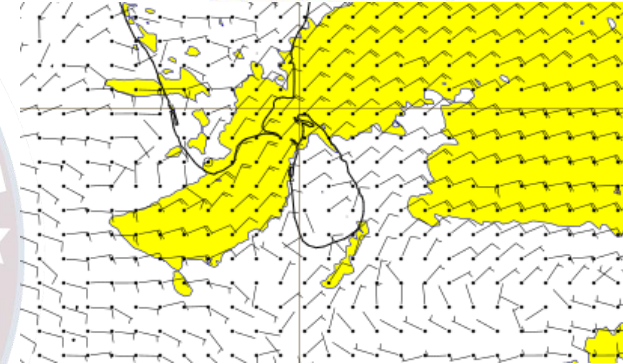
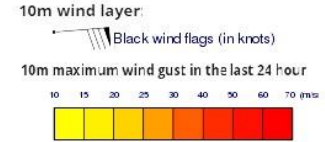
## Wind and Rainfall Forecast (Total precipitation for 24 hrs)



## Significant wave height (in meters)



## Wind Gust (m/s)

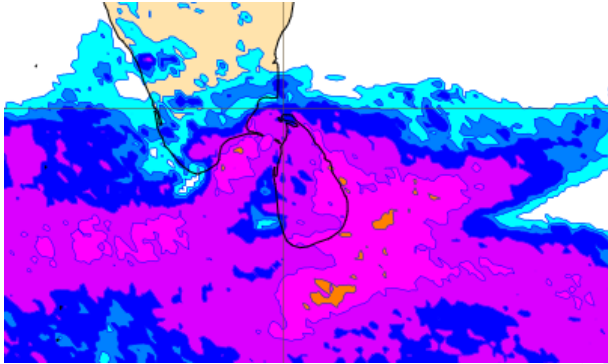
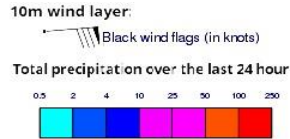


Showers or thunder showers will occur at several places the sea areas around the island

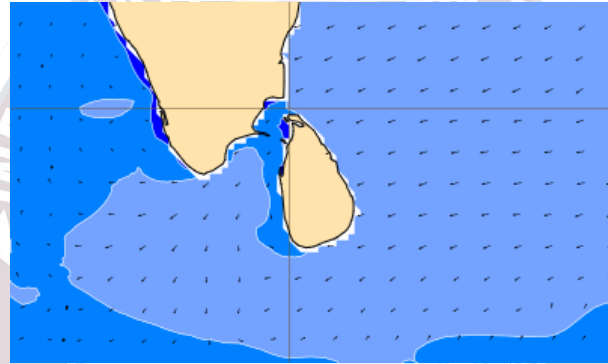
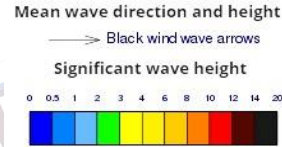
Wind speed will be (25-35) kmph. Wind speed will increase up to 45-50 kmph at times and the sea condition can be fairly rough at times in the sea areas extending from Trincomalee to Colombo via Puttalam.



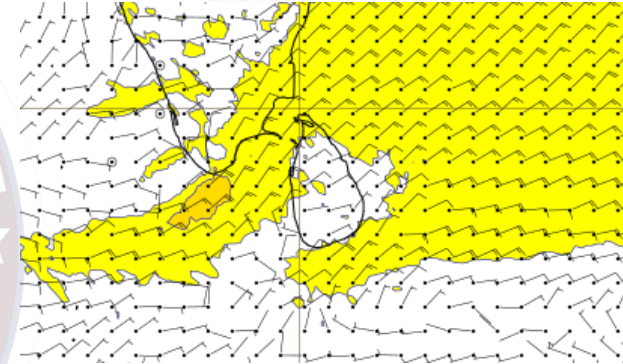
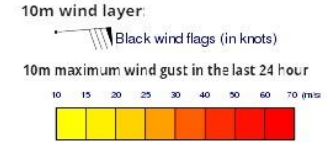
## Wind and Rainfall Forecast (Total precipitation for 24 hrs)



## Significant wave height (in meters)



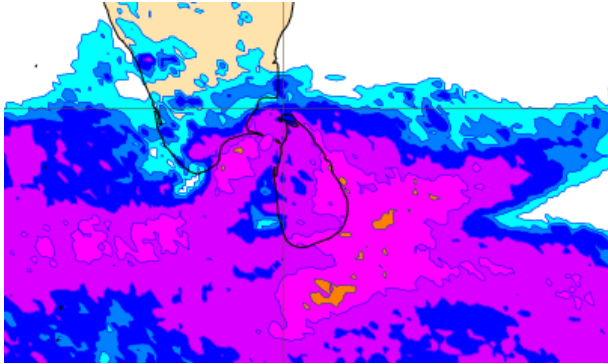
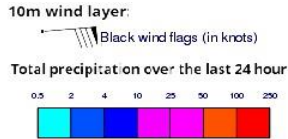
## Wind Gust (m/s)



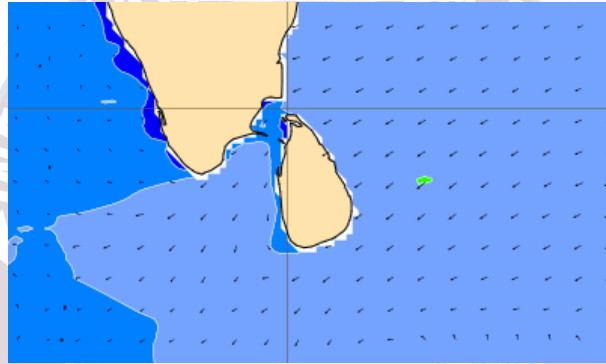
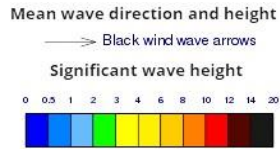
Showers or thundershowers will occur at times in the sea areas around the island.

Wind speed will be (25-35) kmph. Wind speed will increase up to 45-50 kmph at times and the sea condition can be fairly rough at times in the sea areas around the island.

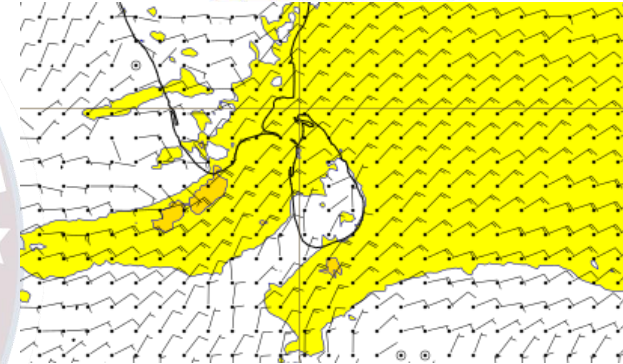
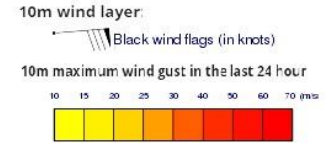
## Wind and Rainfall Forecast (Total precipitation for 24 hrs)



## Significant wave height (in meters)



## Wind Gust (m/s)



Showers or thundershowers will occur at times in the sea areas around the island.

Wind speed will be (25-35) kmph. Wind speed will increase up to 45-50 kmph at times and the sea condition can be fairly rough at times in the sea areas around the island.



Thank you!