

# 08 DAYS WEATHER FORECAST FOR COASTAL AREAS AROUND SRI LANKA

Storm Direction



WARNING

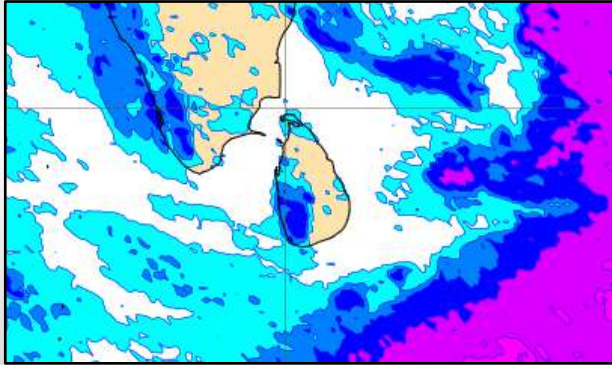
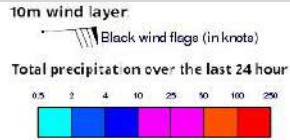


**INFORMATION FUSION CENTRE  
COLOMBO**

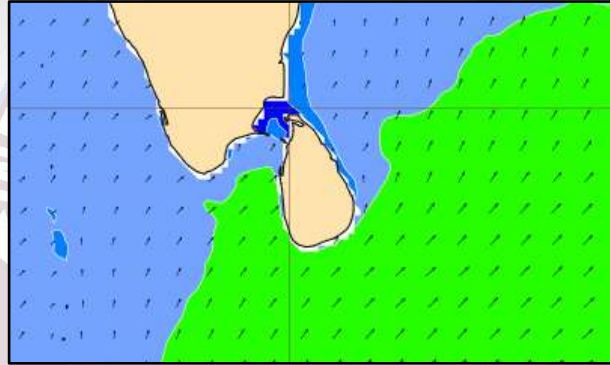
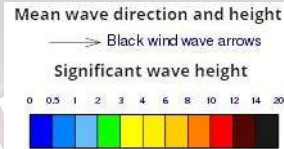


**Issued at 0400 p.m. on 06<sup>th</sup> June 2025**  
**Marine Weather Division, National Meteorological Centre, Department of**  
**Meteorology, Sri Lanka**

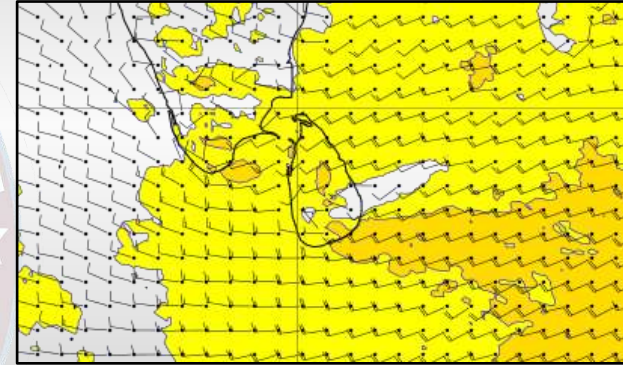
## Wind and Rainfall Forecast (Total precipitation for 24 hrs)



## Significant wave height (in meters)



## Wind Gust (m/s)

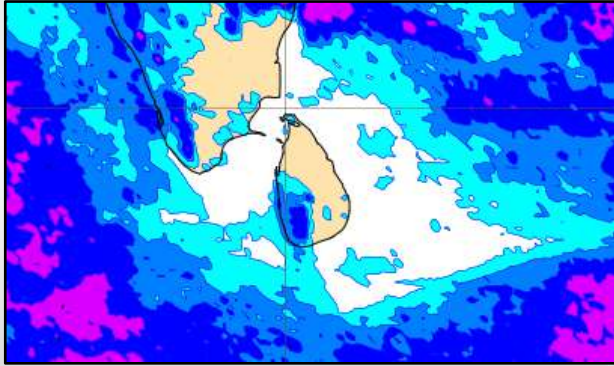
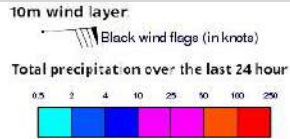


Light showers will occur at few places in the sea areas extending from Puttalam to Matara via Galle, Colombo. Mainly fair weather will prevail the other sea areas around the island.

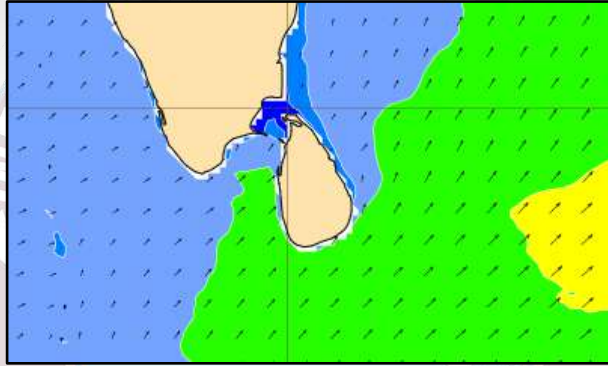
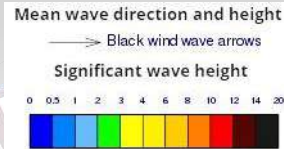
Wind speed will be (30-40) kmph and wind speed can increase up to 50 kmph at times and the sea condition will be rough at times in the sea areas extending from Galle to Pothuvil via Matara and from Puttalam to Kankasanturai via Mannar. Wind speed will be (20-30) kmph in the other sea areas around the island. Wind speed can increase up to 45 kmph at times and the sea condition will be fairly rough at times in the sea areas extending from Puttalam to Galle via Colombo and from Kankasanturai to Trincomalee via Mullaitivu.



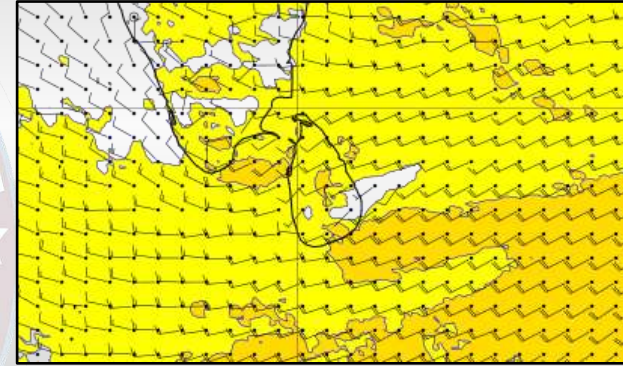
## Wind and Rainfall Forecast (Total precipitation for 24 hrs)



## Significant wave height (in meters)



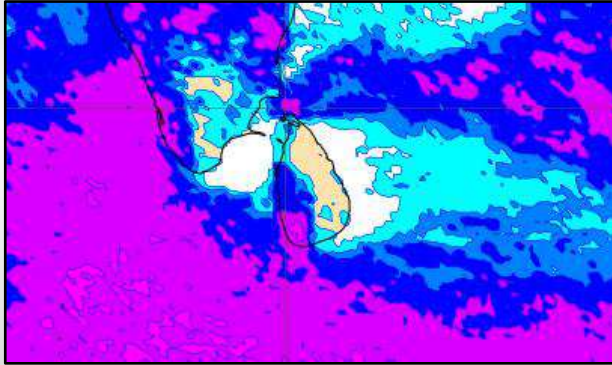
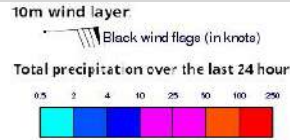
## Wind Gust (m/s)



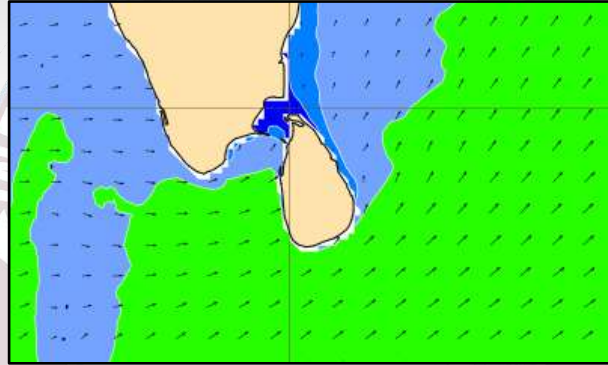
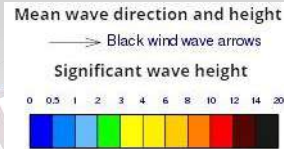
Light showers will occur at few places in the sea areas extending from Puttalam to Matara via Galle, Colombo. Mainly fair weather will prevail the other sea areas around the island.

Wind speed will be (30-40) kmph and wind speed can increase up to 50 kmph at times and the sea condition will be rough at times in the sea areas extending from Galle to Pothuvil via Matara and from Puttalam to Kankasanturai via Mannar. Wind speed will be (20-30) kmph in the other sea areas around the island. Wind speed can increase up to 45 kmph at times and the sea condition will be fairly rough at times in the sea areas extending from Puttalam to Galle via Colombo and from Kankasanturai to Trincomalee via Mullaitivu.

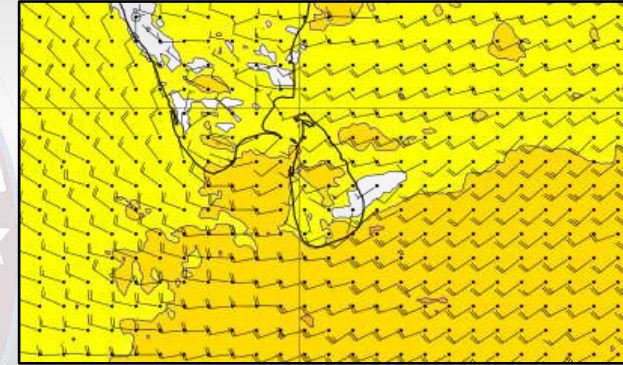
## Wind and Rainfall Forecast (Total precipitation for 24 hrs)



## Significant wave height (in meters)



## Wind Gust (m/s)

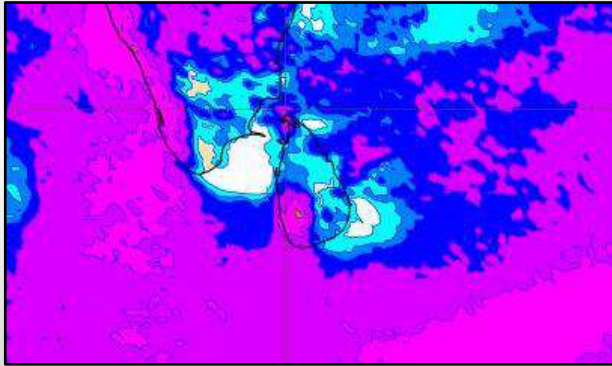
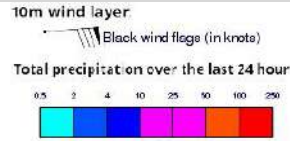


Showers or thundershowers will occur at several places in the sea areas extending from Puttalam to Matara via Galle, Colombo. Showers or thundershowers will occur at a few places over the other sea areas around the island.

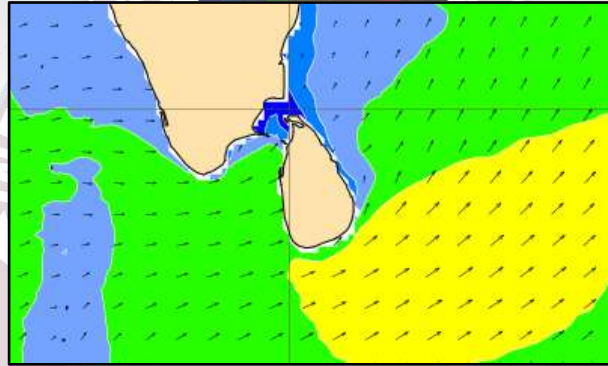
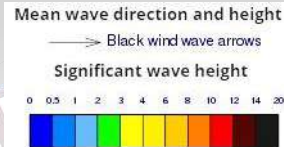
Wind speed will be (30-40) kmph. Wind speed can increase up to 60-65 kmph at times and the sea condition will be very rough at times in the sea areas extending from Galle to Pothuvil via Matara and from Puttalam to Mannar. Wind speed can increase up to 50 kmph at times and the sea condition will be fairly rough at times in the sea areas extending from Puttalam to Galle via Colombo and from Mannar to Trincomalee via Kankasanturai.



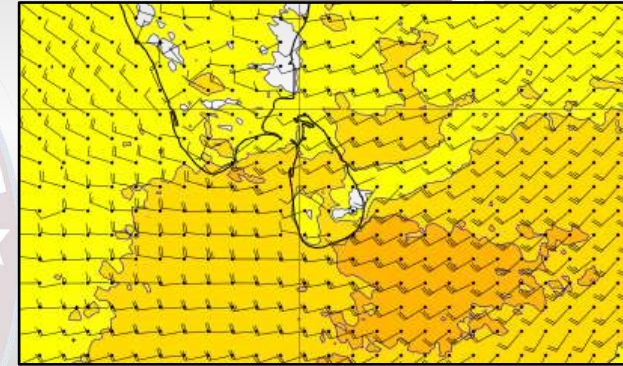
## Wind and Rainfall Forecast (Total precipitation for 24 hrs)



## Significant wave height (in meters)



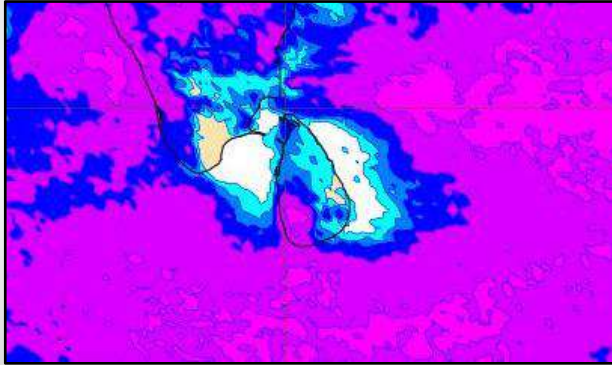
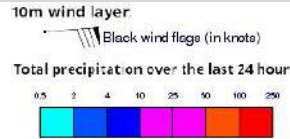
## Wind Gust (m/s)



Showers or thundershowers will occur at several places in the sea areas extending from Puttalam to Matara via Galle, Colombo. Showers or thundershowers will occur at a few places over the other sea areas around the island.

Wind speed will be (30-40) kmph. Wind speed can increase up to 65 kmph at times and the sea condition will be very rough at times in the sea areas extending from Galle to Pothuvil via Matara and from Puttalam to Mannar. Wind speed can increase up to 50 kmph at times and the sea condition will be fairly rough at times in the sea areas extending from Puttalam to Galle via Colombo and from Mannar to Trincomalee via Kankasanturai.

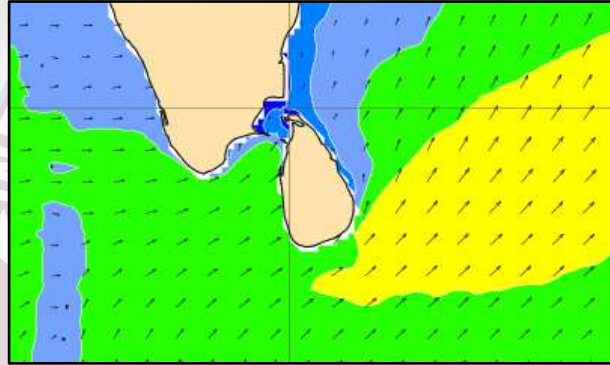
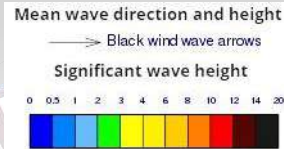
## Wind and Rainfall Forecast (Total precipitation for 24 hrs)



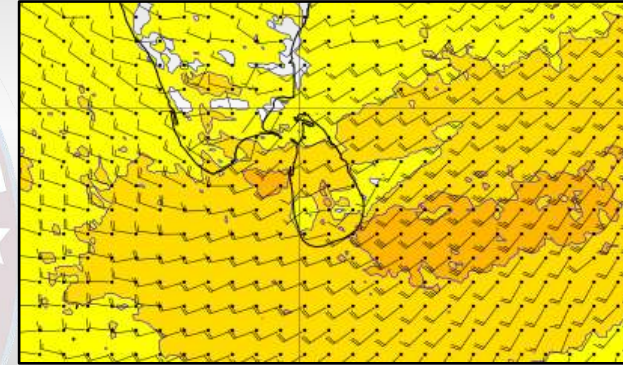
Showers or thundershowers will occur at several places in the sea areas extending from Puttalam to Matara via Galle, Colombo. Showers or thundershowers will occur at a few places over the other sea areas around the island.

Wind speed will be (30-40) kmph. Wind speed can increase up to 65 kmph at times and the sea condition will be very rough at times in the sea areas extending from Galle to Pothuvil via Matara and from Puttalam to Mannar. Wind speed can increase up to 50 kmph at times and the sea condition will be fairly rough at times in the sea areas extending from Puttalam to Galle via Colombo and from Mannar to Trincomalee via Kankasanturai.

## Significant wave height (in meters)

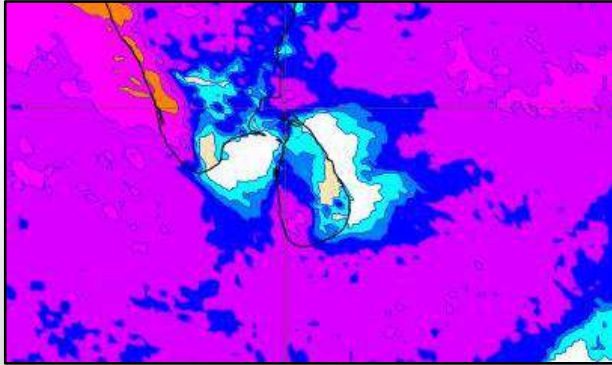
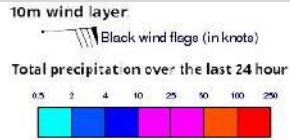


## Wind Gust (m/s)

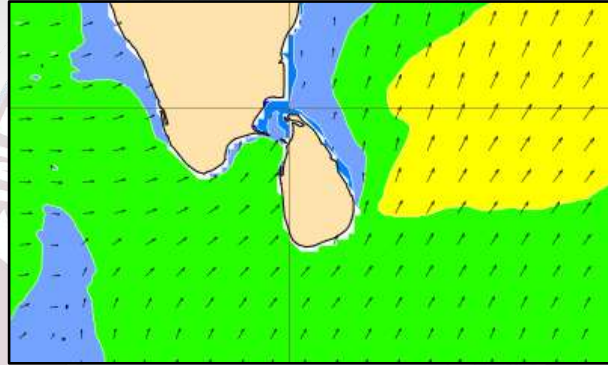
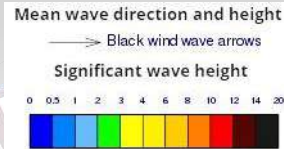




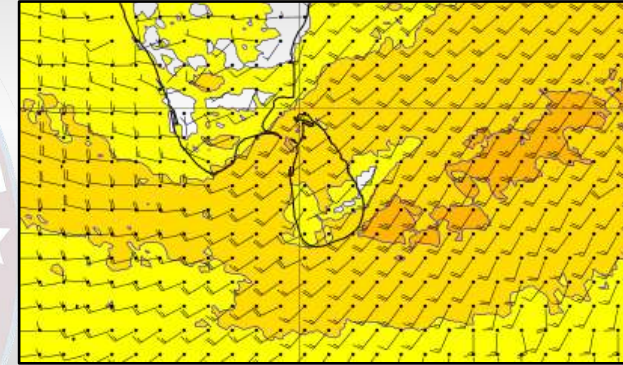
## Wind and Rainfall Forecast (Total precipitation for 24 hrs)



## Significant wave height (in meters)



## Wind Gust (m/s)

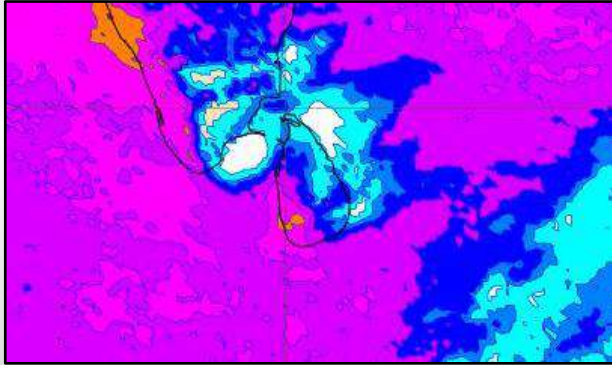
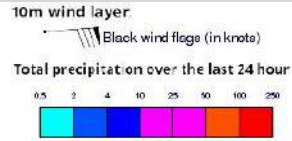


Showers or thundershowers will occur at several places in the sea areas extending from Puttalam to Matara via Galle, Colombo. Showers or thundershowers will occur at a few places over the other sea areas around the island.

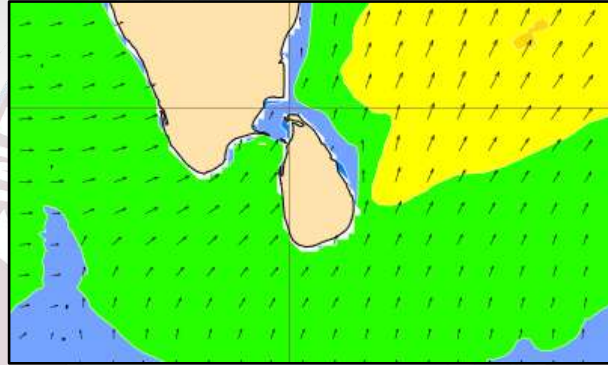
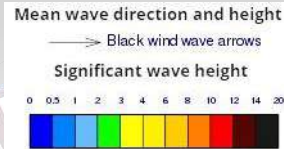
Wind speed will be (30-40) kmph. Wind speed can increase up to 65 kmph at times and the sea condition will be very rough at times in the sea areas extending from Galle to Pothuvil via Matara and from Puttalam to Mannar. Wind speed can increase up to 50 kmph at times and the sea condition will be fairly rough at times in the sea areas extending from Puttalam to Galle via Colombo and from Mannar to Trincomalee via Kankasanturai.



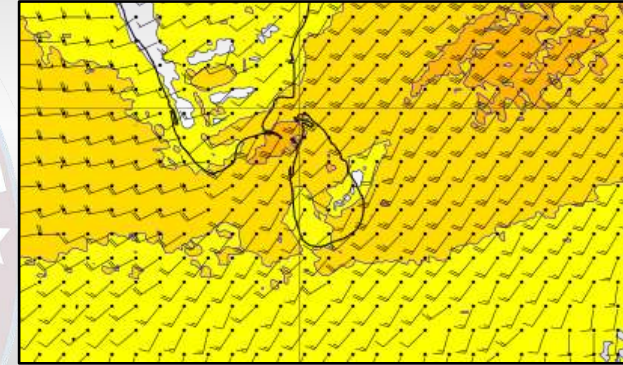
## Wind and Rainfall Forecast (Total precipitation for 24 hrs)



## Significant wave height (in meters)



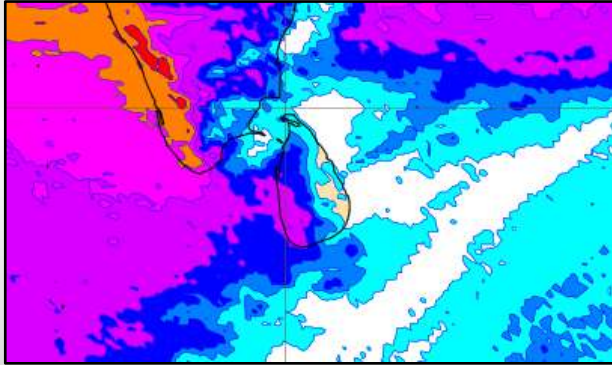
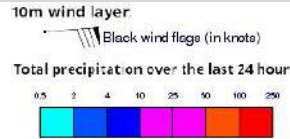
## Wind Gust (m/s)



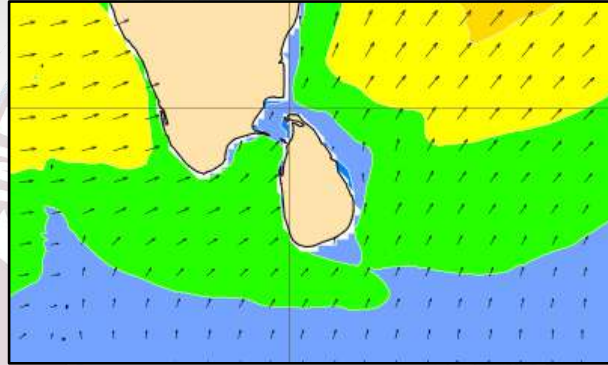
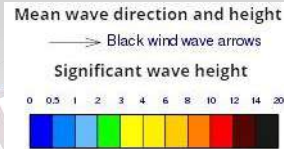
Showers or thundershowers will occur at several places in the sea areas extending from Puttalam to Matara via Galle, Colombo. Showers or thundershowers will occur at a few places over the other sea areas around the island.

Wind speed will be (30-40) kmph. Wind speed can increase up to 65 kmph at times and the sea condition will be very rough at times in the sea areas extending from Galle to Pothuvil via Matara and from Puttalam to Kankasanturai via Mannar. Wind speed can increase up to 50 kmph at times and the sea condition will be fairly rough at times in the sea areas extending from Puttalam to Galle via Colombo and from Kankasanturai Trincomalee via Mullaitivu.

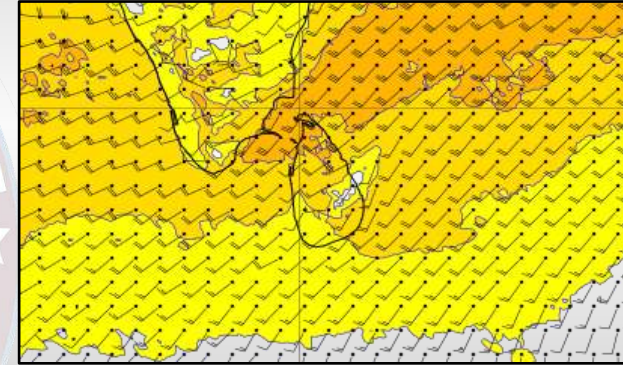
### Wind and Rainfall Forecast (Total precipitation for 24 hrs)



### Significant wave height (in meters)



### Wind Gust (m/s)



Showers or thundershowers will occur at several places in the sea areas extending from Puttalam to Matara via Galle, Colombo. Showers or thundershowers will occur at a few places over the other sea areas around the island.

Wind speed will be (30-40) kmph. Wind speed can increase up to 65 kmph at times and the sea condition will be very rough at times in the sea areas extending from Puttalam to Trincomalee via Mannar. Wind speed can increase up to 50 kmph at times and the sea condition will be fairly rough at times in the other sea areas around the island.

The logo of the Information Fusion Centre - Colombo - Sri Lanka is a circular emblem. It features a map of Sri Lanka in the center, surrounded by a blue border. The text "INFORMATION FUSION CENTRE" is written in a semi-circle at the top, and "COLOMBO - SRI LANKA" is written in a semi-circle at the bottom. Two green stars are positioned on the left and right sides of the emblem.

**Thank you !**