

08 DAYS WEATHER FORECAST FOR COASTAL AREAS AROUND SRI LANKA

Storm Direction

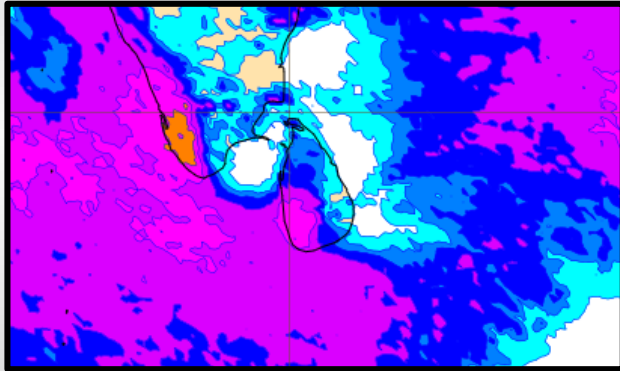
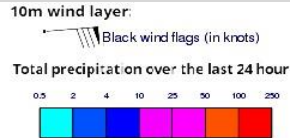


**INFORMATION FUSION CENTRE
COLOMBO**

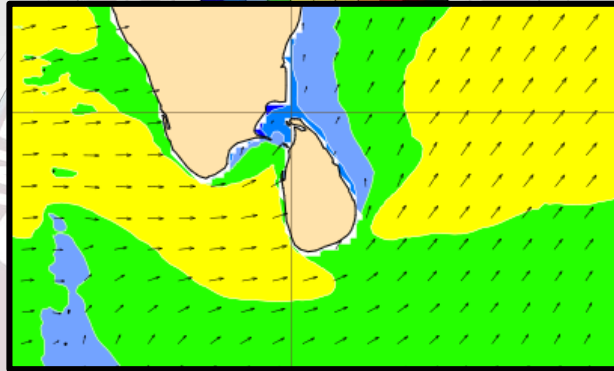
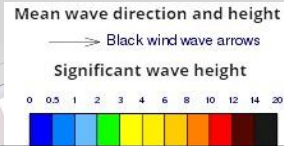


Issued at 0400 p.m. on 29th May 2025
Marine Weather Division, National Meteorological Centre, Department of
Meteorology, Sri Lanka

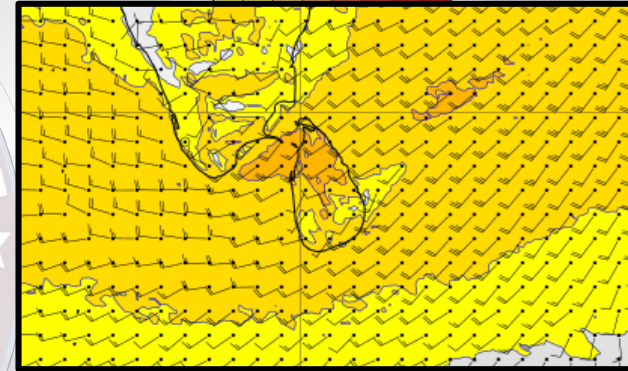
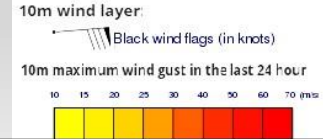
Wind and Rainfall Forecast (Total precipitation for 24 hrs)



Significant wave height (in meters)



Wind Gust (m/s)

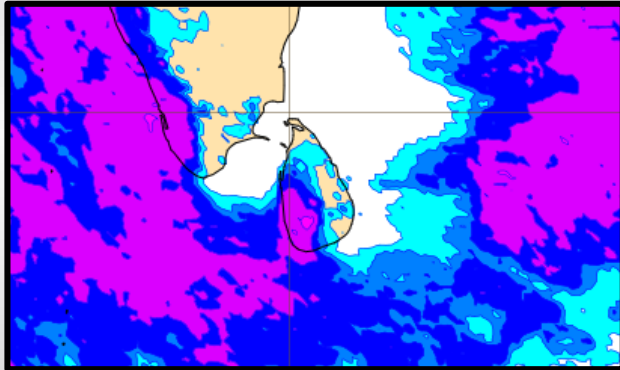
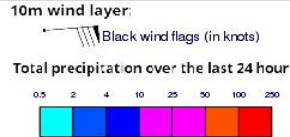


Showers or thundershowers will occur at several places in the sea areas extending from Puttalam to Matara via Galle, Colombo. Showers or thundershowers will occur at a few places over the other sea areas around the island.

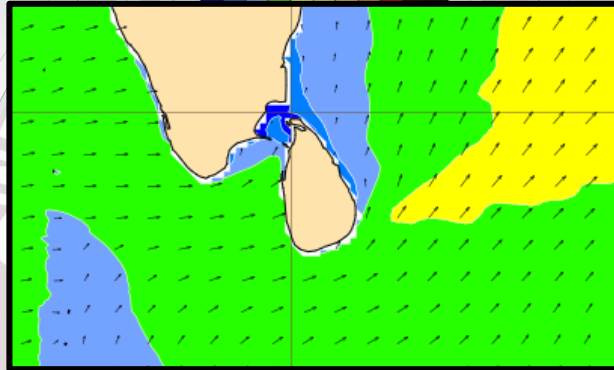
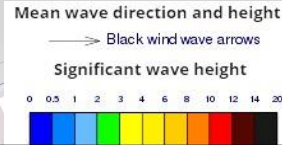
Wind speed will be (40-50) kmph and wind speed can increase up to 70 kmph at times and the sea condition will be very rough at times in the sea areas extending from Galle to Pothuvil via Matara and from Kankasanturai to Chilaw via Mannar and fishing communities are advised not to venture into these sea areas, until further notice. Wind speed will be (30-40) kmph in the other sea areas around the island. Wind speed can increase up to 60 kmph at times and the sea condition will be rough at times in the sea areas extending from Chilaw to Galle via Colombo and from Kankasanturai to Trincomalee via Mulaitivu. Naval and fishing communities are requested to be vigilant in this regard.

The wave height (about 2.5 m – 3.0 m) may increase in the sea areas off the coast extending from Mannar to Pottuvil via Puttalam, Colombo, Galle and Hambantota.

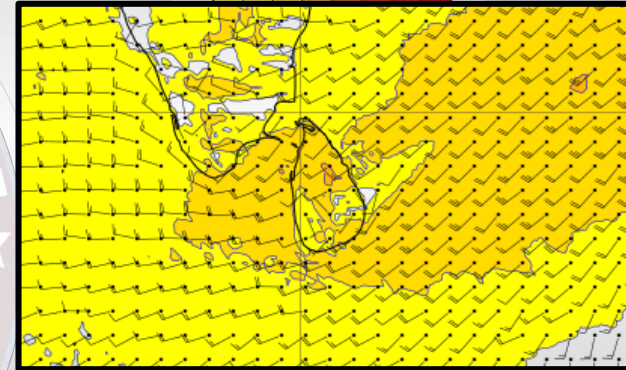
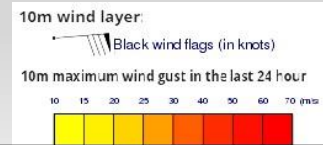
Wind and Rainfall Forecast (Total precipitation for 24 hrs)



Significant wave height (in meters)



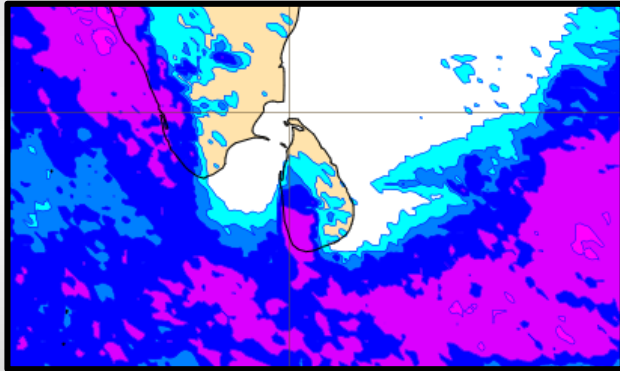
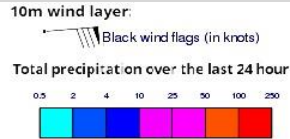
Wind Gust (m/s)



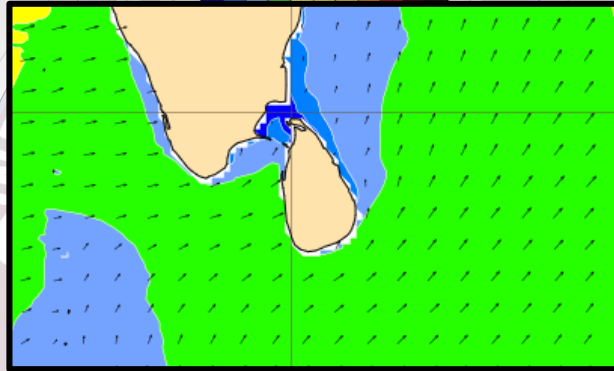
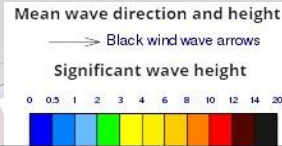
Showers or thundershowers will occur at several places in the sea areas extending from Puttalam to Matara via Galle, Colombo. Showers or thundershowers will occur at a few places over the other sea areas around the island.

Wind speed will be (35-45) kmph and wind speed can increase up to 65 kmph at times and the sea condition will be rough at times in the sea areas extending from Pothuvil to Matara and from Kankasanturai to Chilaw via Mannar. Wind speed will be (30-40) kmph in the other sea areas around the island. Wind speed can increase up to 50-55 kmph at times and the sea condition will be fairly rough at times in the sea areas extending from Chilaw to Matara via Colombo and from Kankasanturai to Trincomalee via Mulaitivu.

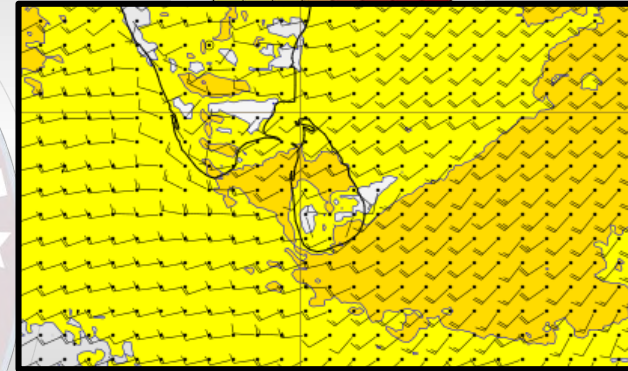
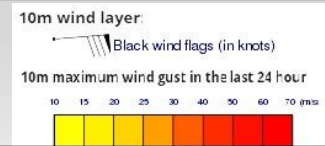
Wind and Rainfall Forecast (Total precipitation for 24 hrs)



Significant wave height (in meters)



Wind Gust (m/s)

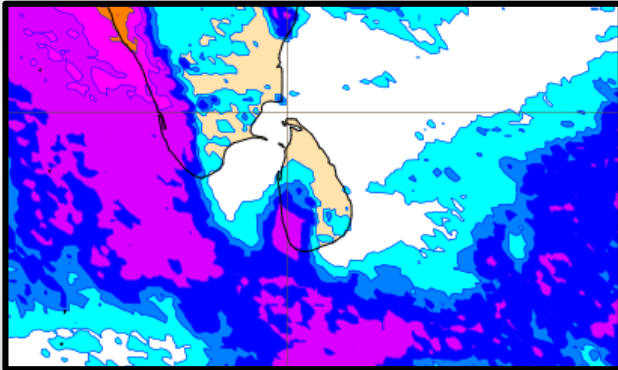
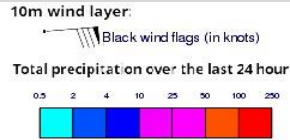


Showers or thundershowers will occur at several places in the sea areas extending from Puttalam to Matara via Galle, Colombo. Showers or thundershowers will occur at a few places over the other sea areas around the island.

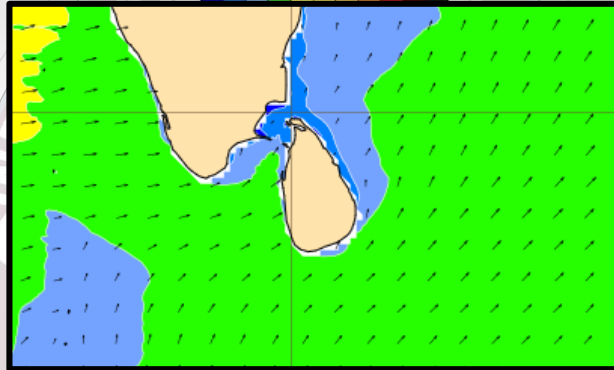
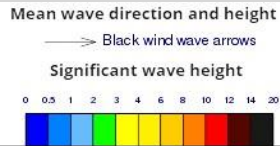
Wind speed will be (40-50) kmph and wind speed can increase up to 65-70 kmph at times and the sea condition will be very rough at times in the sea areas extending from Kankasanturai to Chilaw via Mannar and fishing communities are advised not to venture into these sea areas, until further notice.

Wind speed will be (30-40) kmph in the other sea areas around the island. Wind speed can increase up to 60 kmph at times and the sea condition will be rough at times in the sea areas around the island. Naval and fishing communities are requested to be vigilant in this regard.

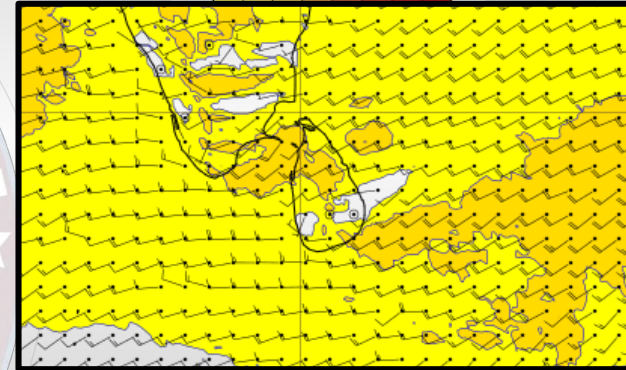
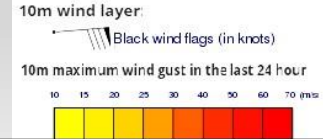
Wind and Rainfall Forecast (Total precipitation for 24 hrs)



Significant wave height (in meters)



Wind Gust (m/s)

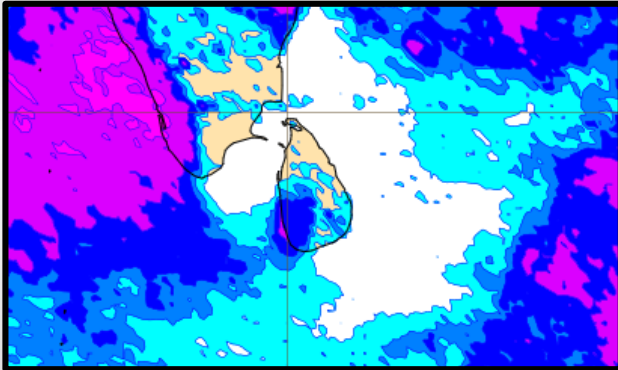
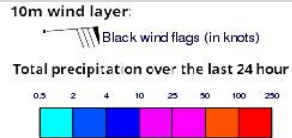


Showers or thundershowers will occur at several places in the sea areas extending from Puttalam to Matara via Galle, Colombo. Showers or thundershowers will occur at a few places over the other sea areas around the island.

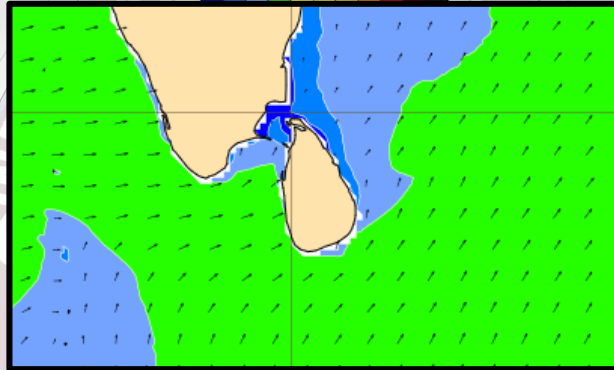
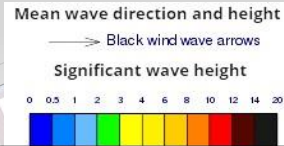
Wind speed will be (30-40) kmph. Wind speed can increase up to 60 kmph at times and the sea condition will be rough at times in the sea areas extending from Kankasanturai to Chilaw via Mannar and from Matara to Potuvil.

Wind speed can increase up to 50 kmph at times and the sea condition will be fairly rough at times in the other sea areas around the island.

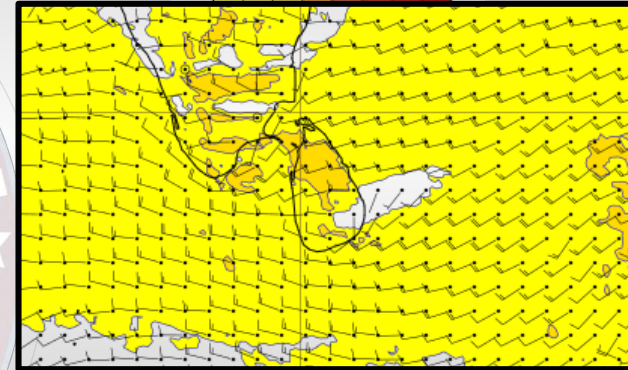
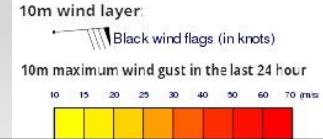
Wind and Rainfall Forecast (Total precipitation for 24 hrs)



Significant wave height (in meters)



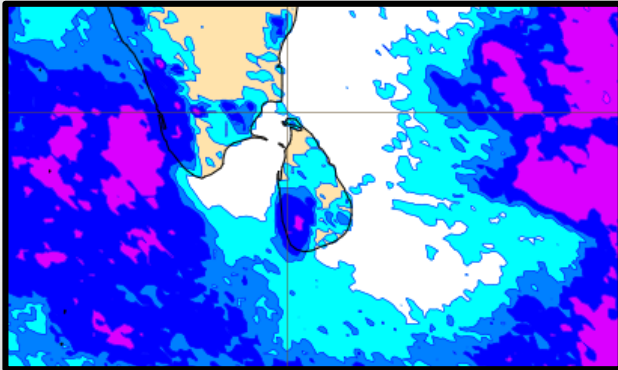
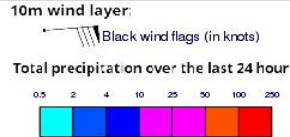
Wind Gust (m/s)



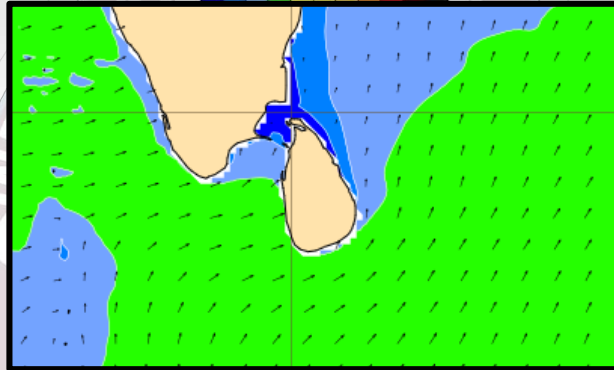
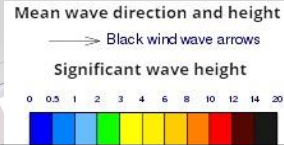
Showers or thundershowers will occur at several places in the sea areas extending from Puttalam to Galle via Colombo. Showers or thundershowers will occur at a few places over the other sea areas around the island.

Wind speed will be (30-40) kmph. Wind speed can increase up to 50 kmph at times and the sea condition will be fairly rough at times in the sea areas extending from Matara to Hambantota and from Puttalam to Mannar.

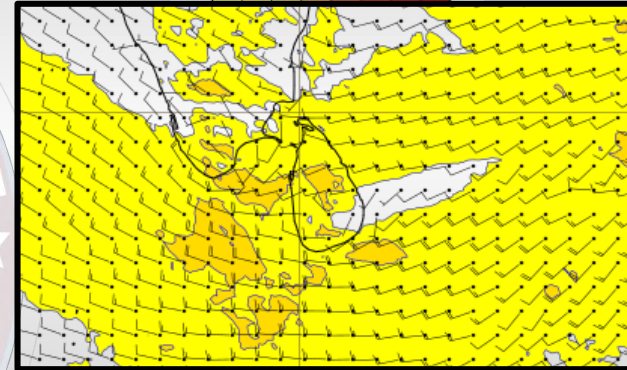
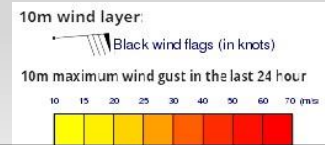
Wind and Rainfall Forecast (Total precipitation for 24 hrs)



Significant wave height (in meters)



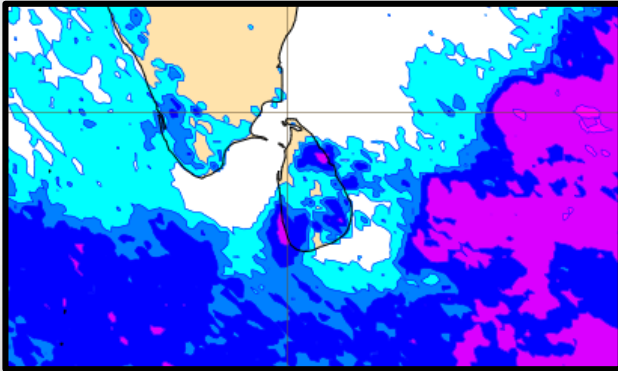
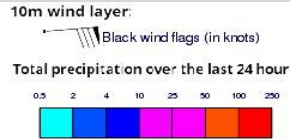
Wind Gust (m/s)



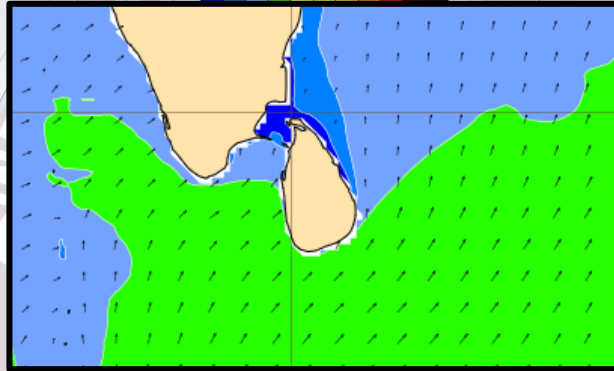
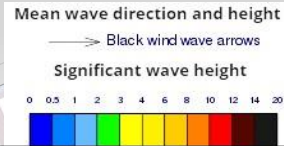
Showers or thundershowers will occur at several places in the sea areas extending from Puttalam to Galle via Colombo. Showers or thundershowers will occur at a few places over the other sea areas around the island.

Wind speed will be (30-40) kmph. Wind speed can increase up to 50 kmph at times and the sea condition will be fairly rough at times in the sea areas extending from Matara to Hambantota and from Puttalam to Mannar.

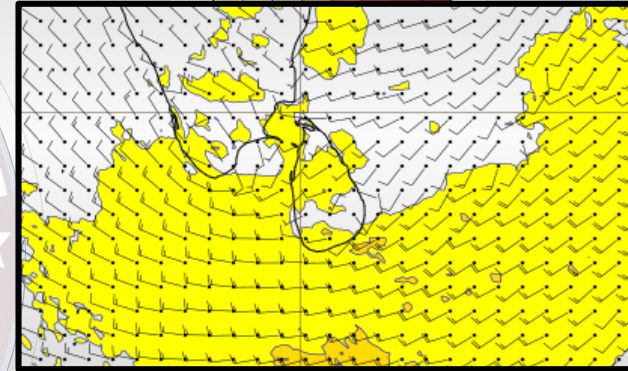
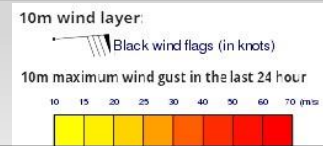
Wind and Rainfall Forecast (Total precipitation for 24 hrs)



Significant wave height (in meters)



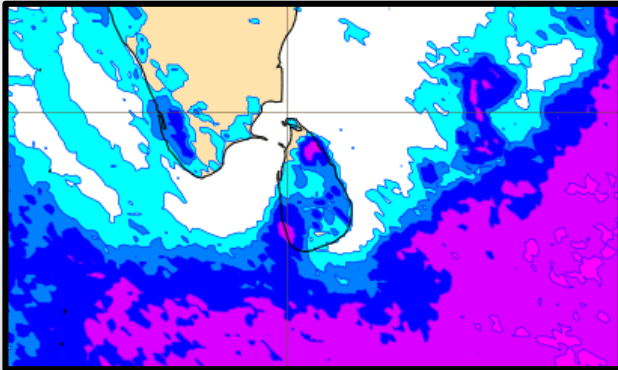
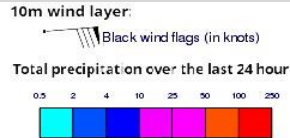
Wind Gust (m/s)



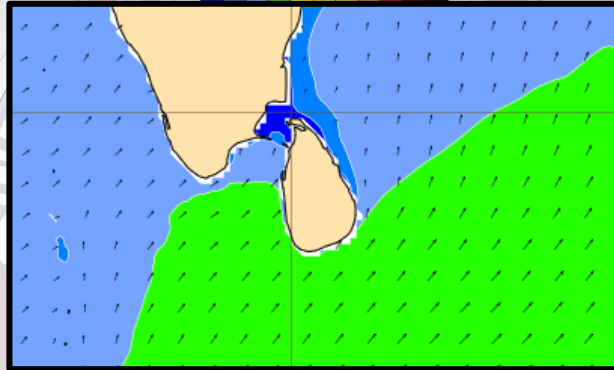
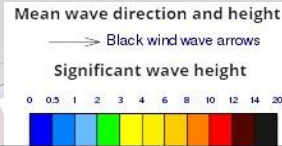
Showers or thundershowers will occur at several places in the sea areas extending from Puttalam to Galle via Colombo. Showers or thundershowers will occur at a few places over the other sea areas around the island.

Wind speed will be (30-40) kmph.

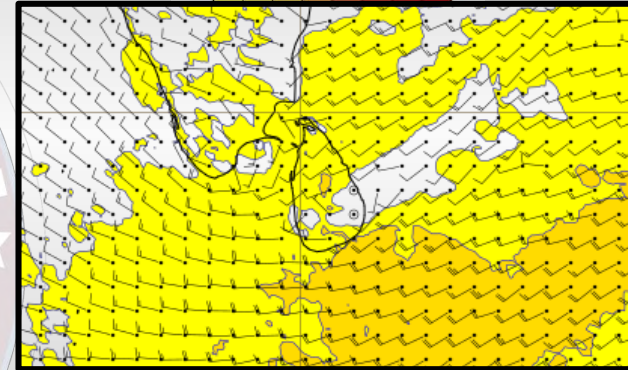
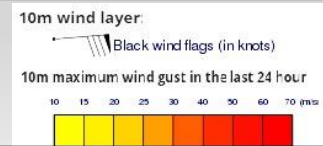
Wind and Rainfall Forecast (Total precipitation for 24 hrs)



Significant wave height (in meters)



Wind Gust (m/s)



Showers or thundershowers will occur at several places in the sea areas extending from Puttalam to Galle via Colombo. Showers or thundershowers will occur at a few places over the other sea areas around the island.

Wind speed will be (30-40) kmph. Wind speed can increase up to 50 kmph at times and the sea condition will be fairly rough at times in the sea areas extending from Matara to Hambantota.



Thank you !