

# 08 DAYS WEATHER FORECAST FOR COASTAL AREAS AROUND SRI LANKA


Storm Direction



WARNING

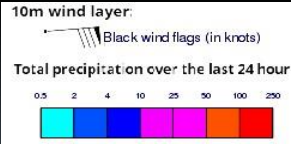


## INFORMATION FUSION CENTRE COLOMBO

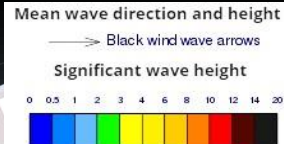


**Issued at 0400 p.m. on 05<sup>th</sup> May 2025**  
**Marine Weather Division, National Meteorological Centre, Department of**  
**Meteorology, Sri Lanka**

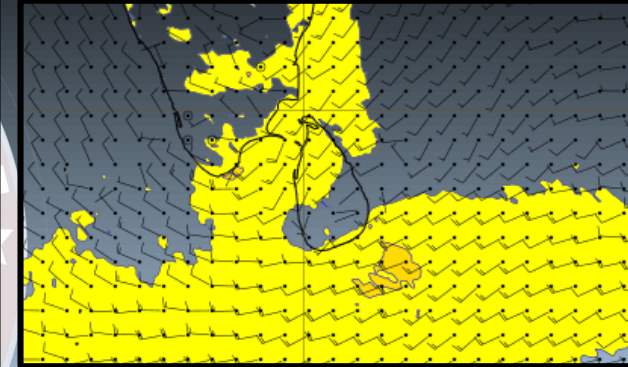
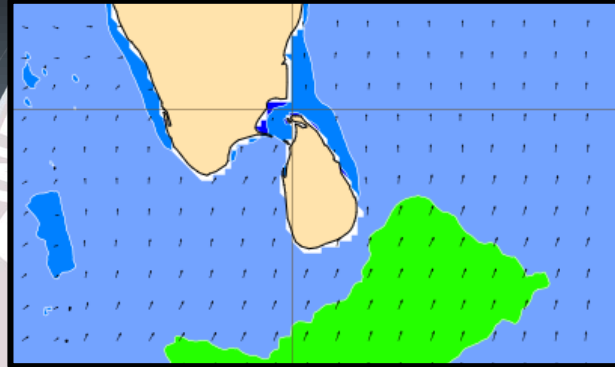
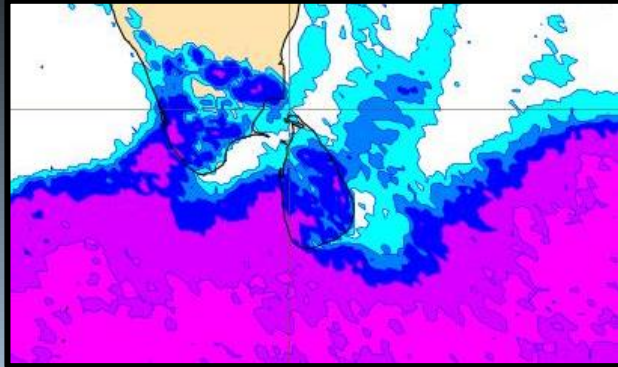
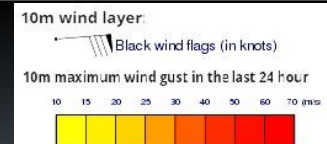
## Wind and Rainfall Forecast (Total precipitation for 24 hrs)



## Significant wave height (in meters)



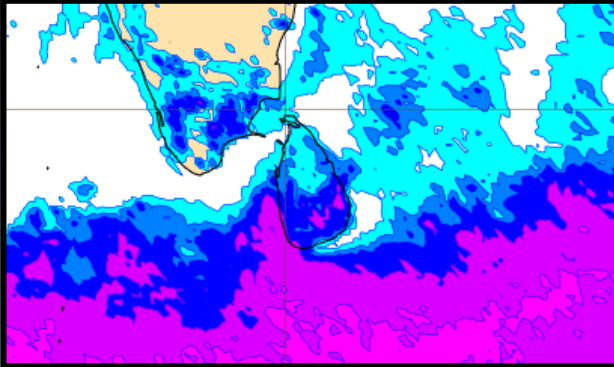
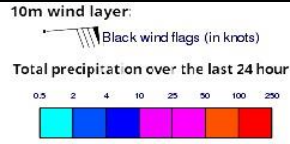
## Wind Gust (m/s)



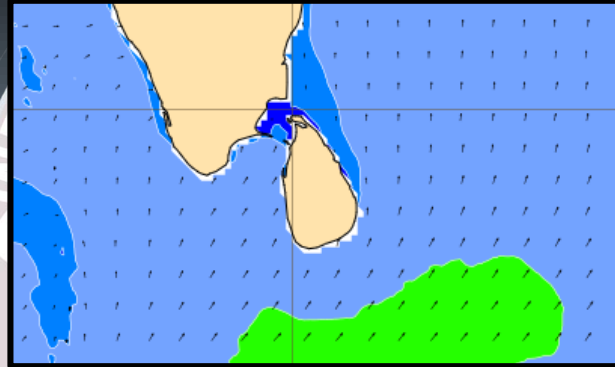
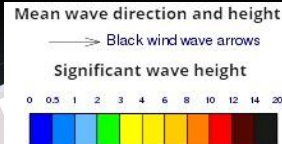
Showers or thundershowers will occur at several places in the sea areas extending from Puttalam to Hambantota via Colombo and Galle. Showers or thundershowers will occur at a few places over the other sea areas around the island.

Wind speed will be (25-35) kmph. Wind speed can increase up to 45-50 kmph at times and the sea condition will be fairly rough at times.

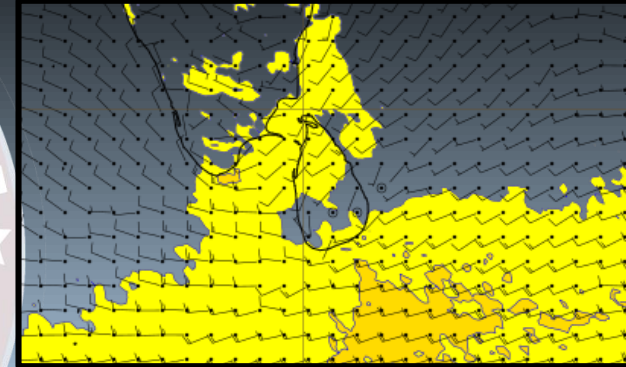
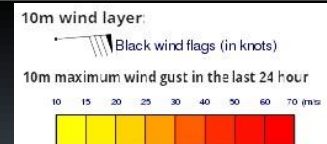
## Wind and Rainfall Forecast (Total precipitation for 24 hrs)



## Significant wave height (in meters)



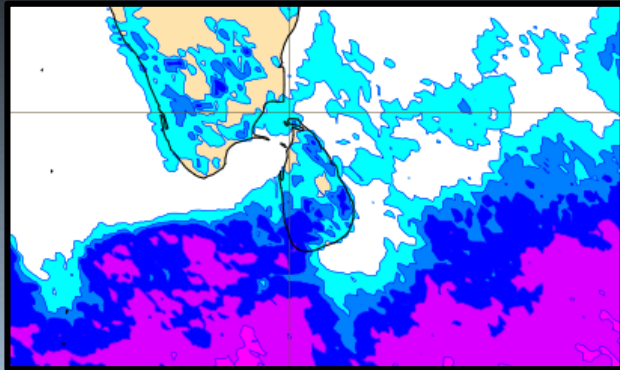
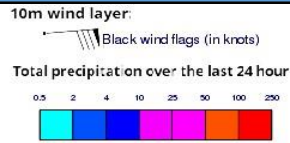
## Wind Gust (m/s)



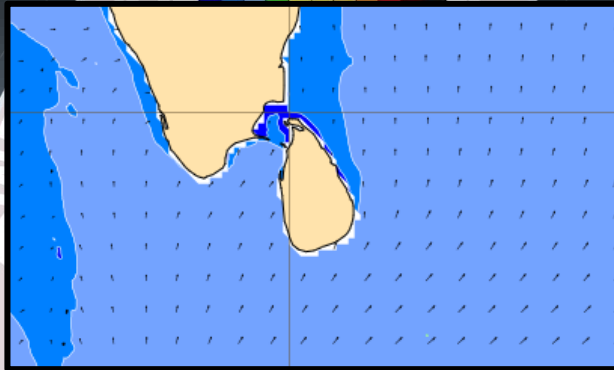
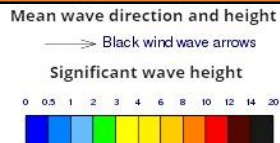
Showers or thundershowers will occur at several places in the sea areas extending from Puttalam to Hambantota via Colombo and Galle. Showers or thundershowers will occur at a few places over the other sea areas around the island.

Wind speed will be (25-35) kmph. Wind speed can increase up to 45-50 kmph at times and the sea condition will be fairly rough at times.

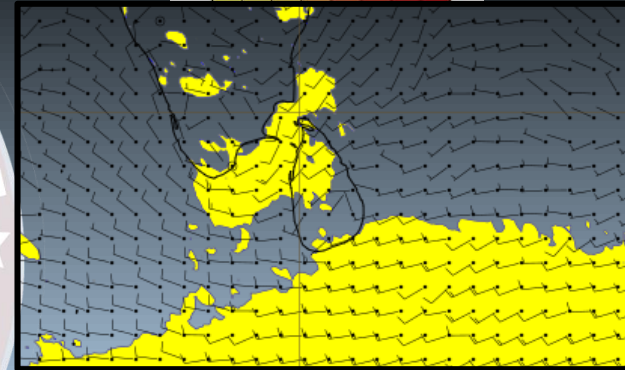
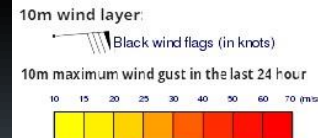
## Wind and Rainfall Forecast (Total precipitation for 24 hrs)



## Significant wave height (in meters)



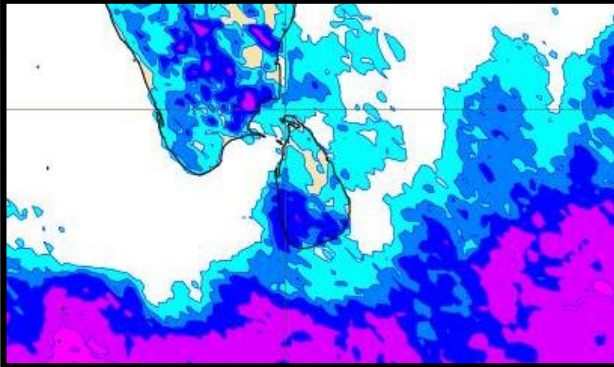
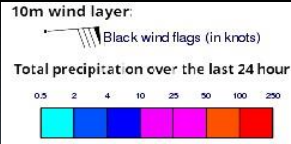
## Wind Gust (m/s)



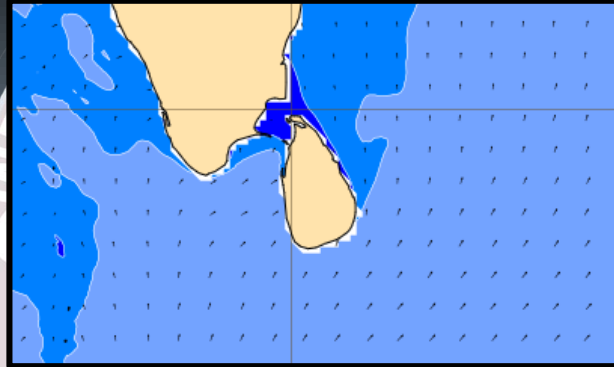
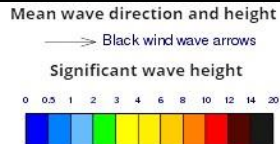
Showers or thundershowers will occur at several places in the sea areas extending from Puttalam to Galle via Colombo. Showers or thundershowers will occur at a few places over the other sea areas around the island.

Wind speed will be (25-35) kmph. Wind speed can increase up to 45 kmph at times and the sea condition will be fairly rough at times in the sea areas extending from Mullaitivu to Puttalam via Kankasanturai and from Galle to Pottuvil via Hambantota.

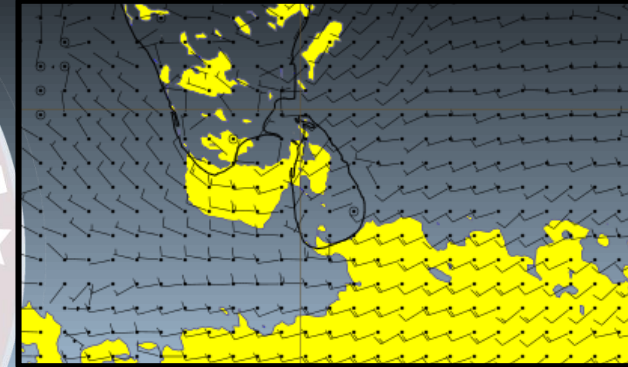
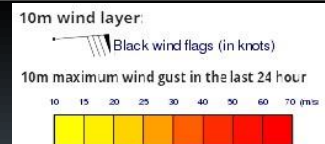
## Wind and Rainfall Forecast (Total precipitation for 24 hrs)



## Significant wave height (in meters)



## Wind Gust (m/s)

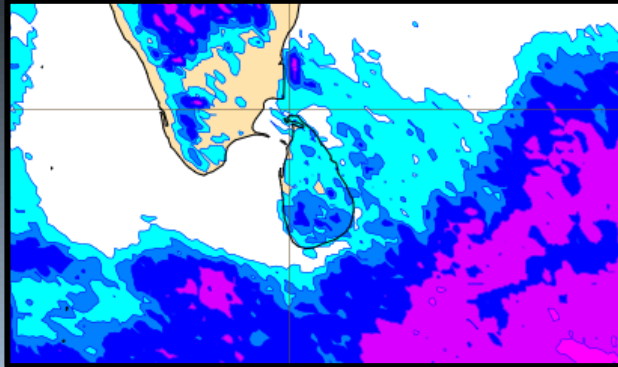
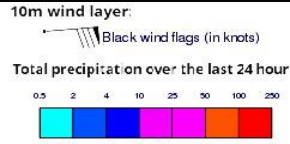


Showers or thundershowers will occur at several places in the sea areas extending from Puttalam to Galle via Colombo. Showers or thundershowers will occur at a few places over the other sea areas around the island.

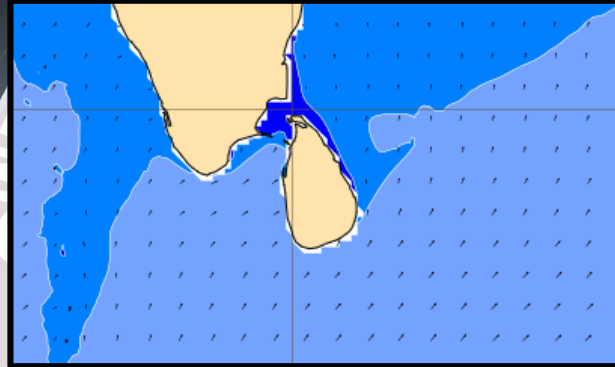
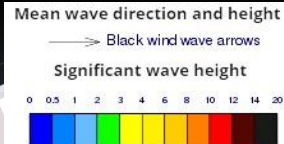
Wind speed will be (25-35) kmph. Wind speed can increase up to 45 kmph at times and the sea condition will be fairly rough at times in the sea areas extending from Mannar to Puttalam and from Galle to Hambantota via Matara.

Trincomalee to Puttalam via Kankasanturai and from Galle to Pottuvil via Hambantota

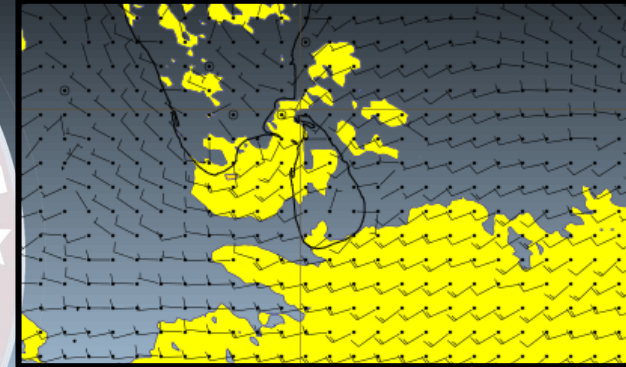
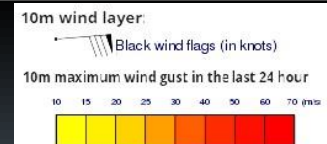
## Wind and Rainfall Forecast (Total precipitation for 24 hrs)



## Significant wave height (in meters)



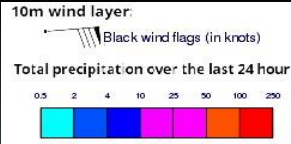
## Wind Gust (m/s)



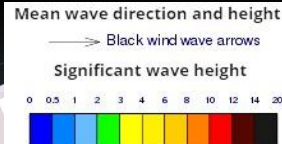
Showers or thundershowers will occur at a few places over the sea areas around the island.

Wind speed will be (25-35) kmph. Wind speed can increase up to 45-50 kmph at times and the sea condition will be fairly rough at times in the sea areas extending from Trincomalee to Puttalam via Kankasanturai and from Galle to Pottuvil via Hambantota.

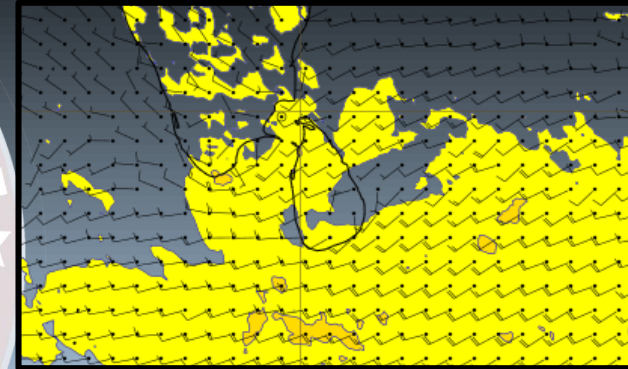
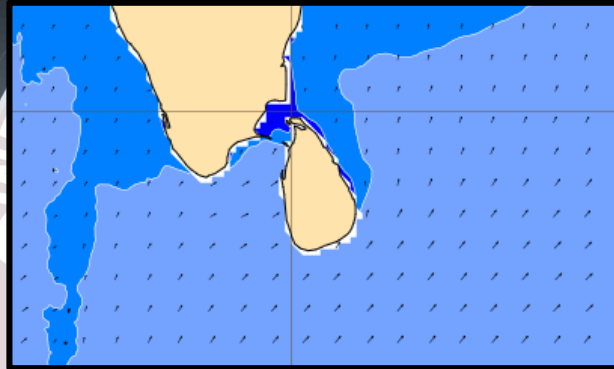
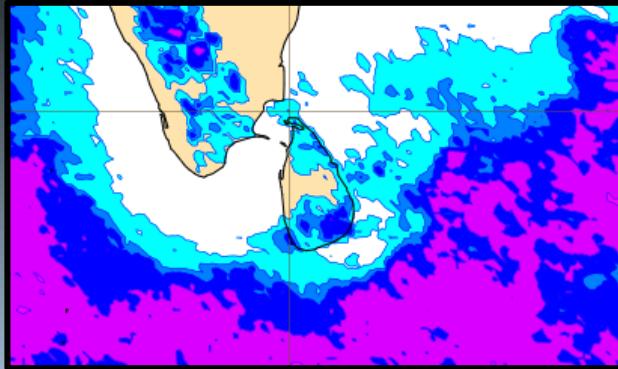
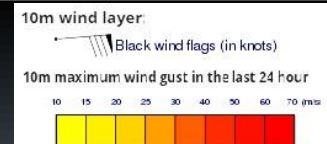
## Wind and Rainfall Forecast (Total precipitation for 24 hrs)



## Significant wave height (in meters)



## Wind Gust (m/s)

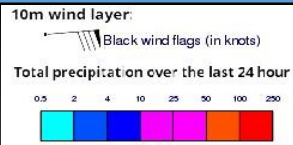


Showers or thundershowers will occur at a few places over the sea areas around the island.

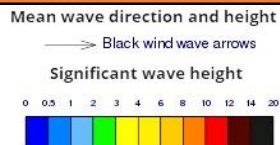
Wind speed will be (25-35) kmph. Wind speed can increase up to 45-50 kmph at times and the sea condition will be fairly rough at times.



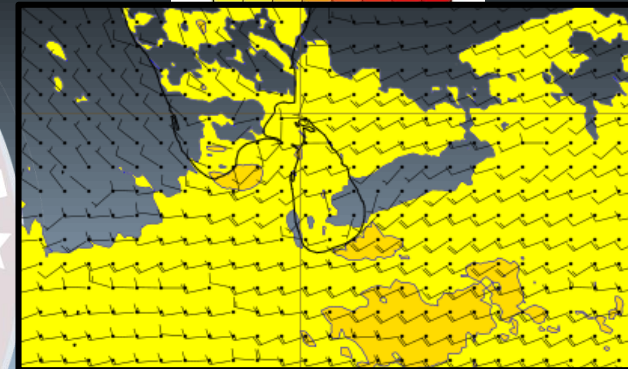
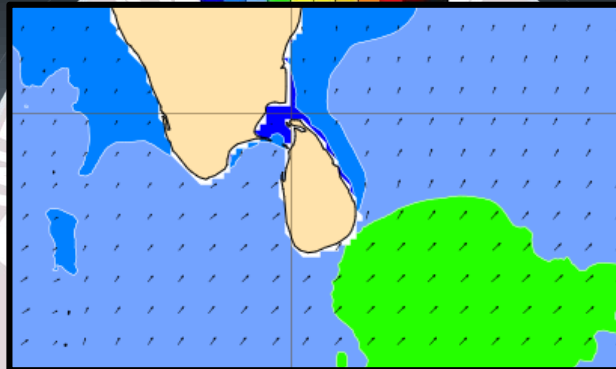
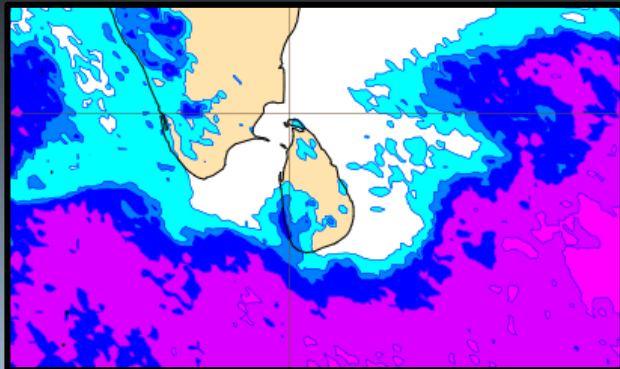
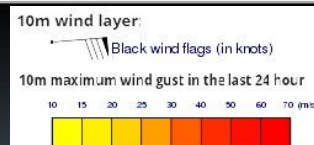
## Wind and Rainfall Forecast (Total precipitation for 24 hrs)



## Significant wave height (in meters)



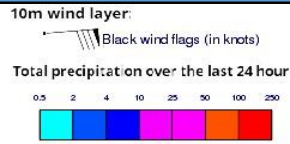
## Wind Gust (m/s)



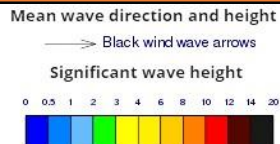
Showers or thundershowers will occur at several places in the sea areas extending from Puttalam to Galle via Colombo. Showers or thundershowers will occur at a few places over the other sea areas around the island.

Wind speed will be (25-35) kmph. Wind speed can increase up to 60 kmph at times and the sea condition will be fairly rough at times in the sea areas extending from Galle to Pottuvil via Hambantota. Wind speed can increase up to 45-50 kmph at times and the sea condition will be fairly rough at times in the other sea areas around the island.

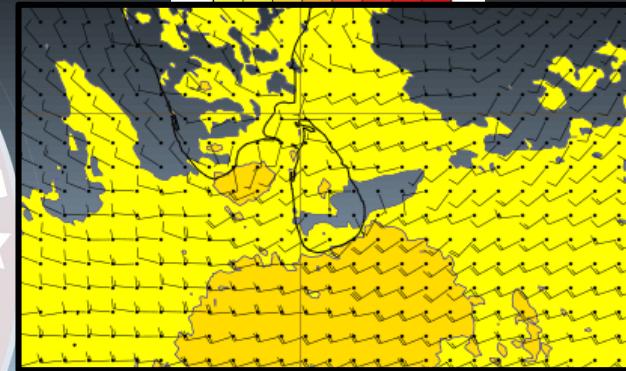
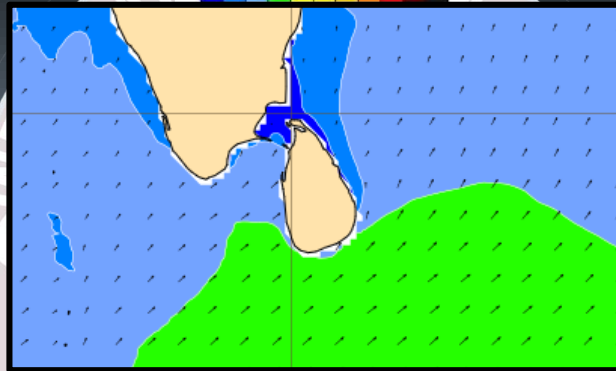
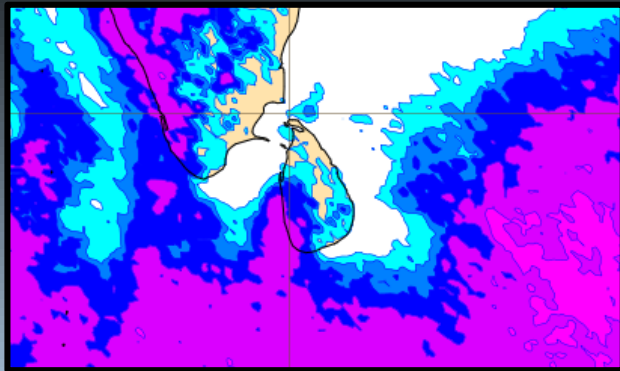
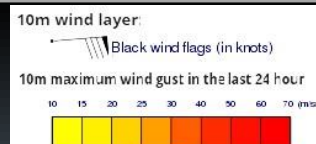
## Wind and Rainfall Forecast (Total precipitation for 24 hrs)



## Significant wave height (in meters)



## Wind Gust (m/s)



Showers or thundershowers will occur at several places in the sea areas extending from Puttalam to Galle via Colombo. Showers or thundershowers will occur at a few places over the other sea areas around the island.

Wind speed will be (25-35) kmph. Wind speed can increase up to 60 kmph at times and the sea condition will be fairly rough at times in the sea areas extending from Galle to Pottuvil via Hambantota. Wind speed can increase up to 45-50 kmph at times and the sea condition will be fairly rough at times in the other sea areas around the island.

The logo of the Information Fusion Centre - Colombo is a circular emblem. It features a map of Sri Lanka in the center, surrounded by a globe. The text "INFORMATION FUSION CENTRE" is written along the top arc, and "COLOMBO - SRI LANKA" is written along the bottom arc. Two stars are positioned on the left and right sides of the emblem.

**Thank you !**