

08 DAYS WEATHER FORECAST FOR COASTAL AREAS AROUND SRI LANKA


Storm Direction



WARNING

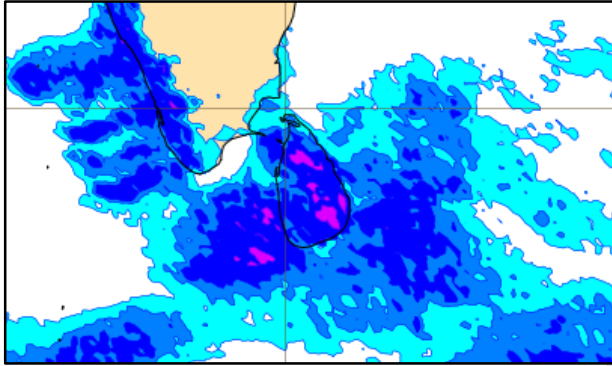
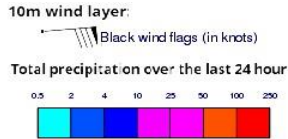


**INFORMATION FUSION CENTRE
COLOMBO**

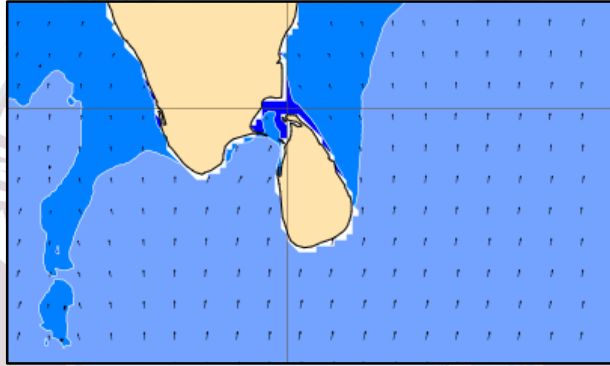
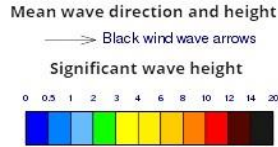


Issued at 2200 p.m. on 20th April 2025
Marine Weather Division, National Meteorological Centre, Department of
Meteorology, Sri Lanka

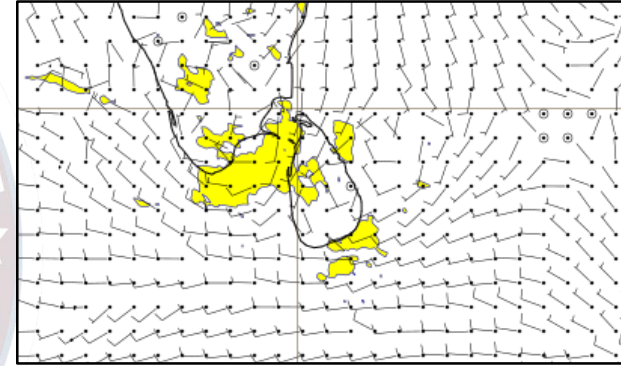
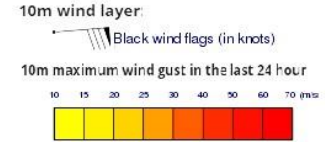
Wind and Rainfall Forecast (Total precipitation for 24 hrs)



Significant wave height (in meters)



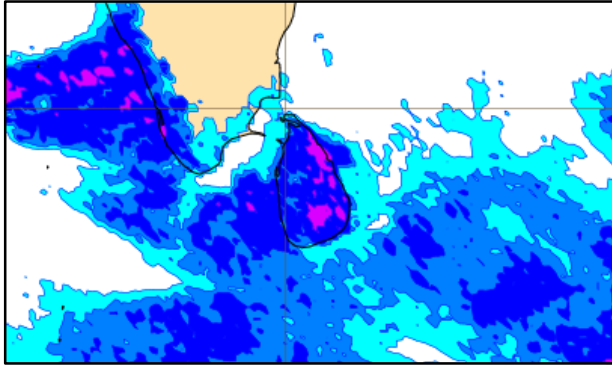
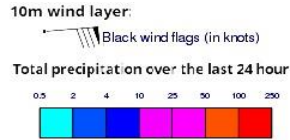
Wind Gust (m/s)



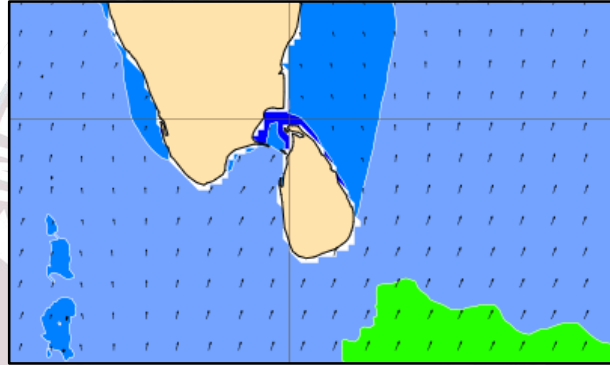
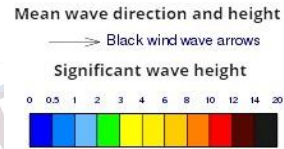
Showers or thundershowers will occur at several places in the sea areas extending from Mannar to Pottuvil via Colombo and Galle. Showers or thundershowers will occur at a few places the other sea areas around the island.

Wind speed will be (20-30) kmph. Wind speed can be increased up to 45 kmph and the sea condition can be fairly rough at times in the sea areas extending from Puttalam to Kankasanturai via Mannar and from Hambantota to Pottuvil.

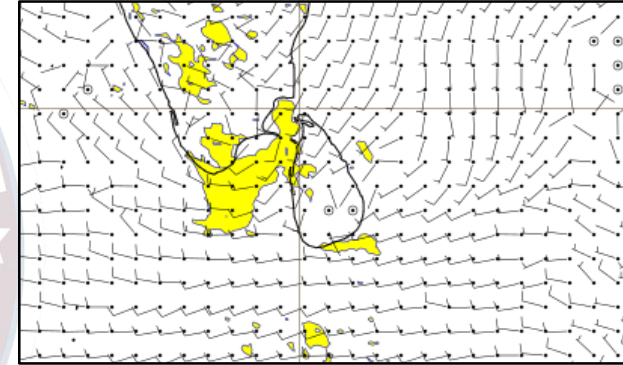
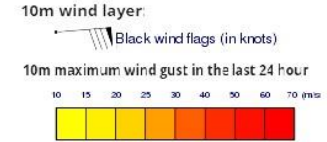
Wind and Rainfall Forecast (Total precipitation for 24 hrs)



Significant wave height (in meters)



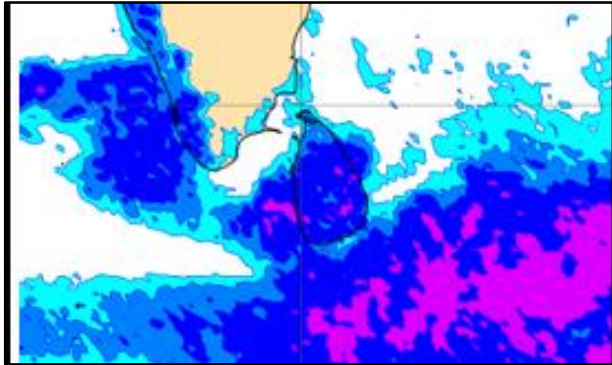
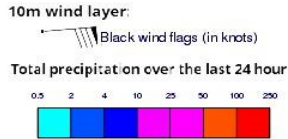
Wind Gust (m/s)



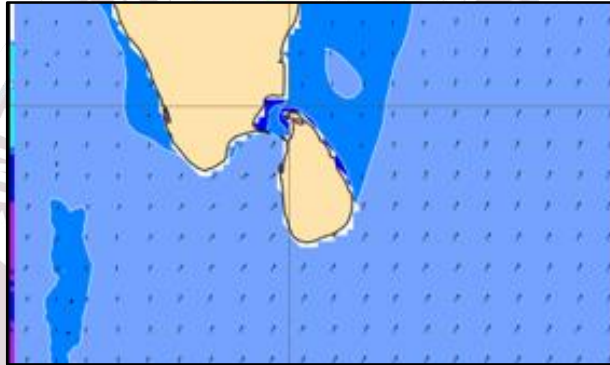
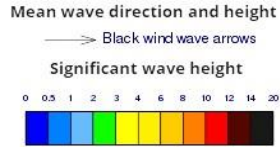
Showers or thundershowers will occur at several places in the sea areas extending from Puttalam to Galle via Colombo. Showers or thundershowers will occur at a few places the other sea areas around the island.

Wind speed will be (20-30) kmph. Wind speed can be increased up to 45 kmph and the sea condition can be fairly rough at times in the sea areas extending from Puttalam to Kankasanturai via Mannar.

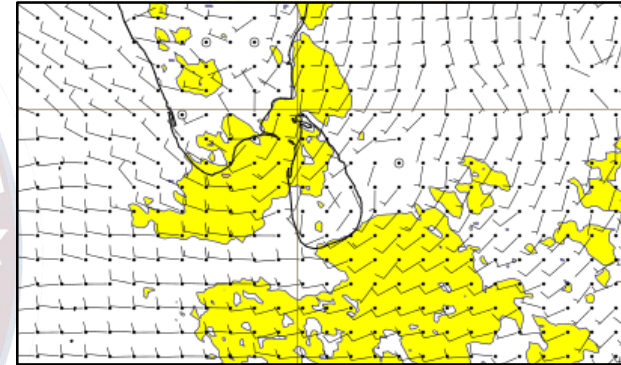
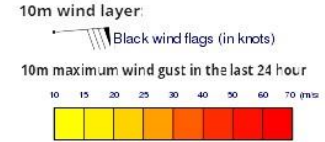
Wind and Rainfall Forecast (Total precipitation for 24 hrs)



Significant wave height (in meters)



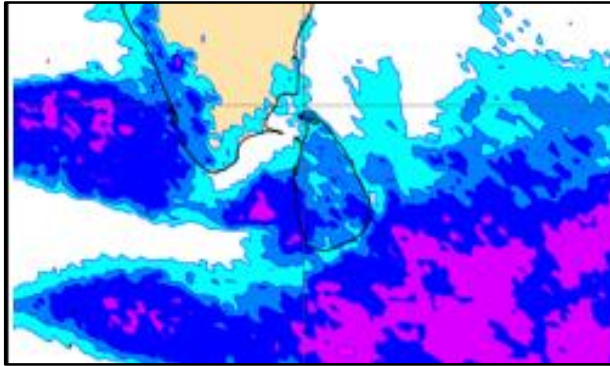
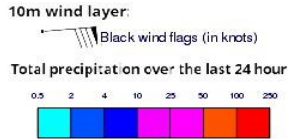
Wind Gust (m/s)



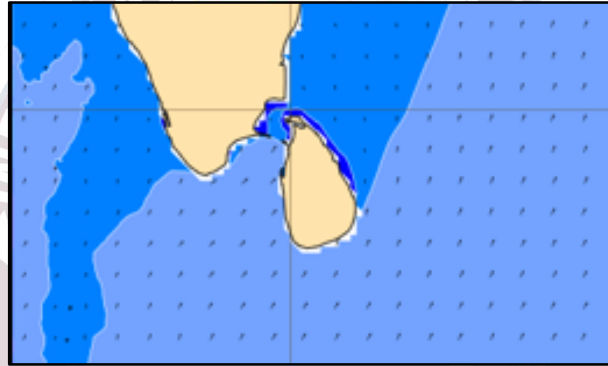
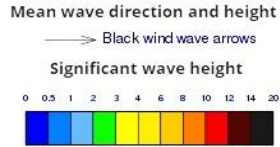
Showers or thundershowers will occur at several places in the sea areas extending from Puttalam to Galle via Colombo. Showers or thundershowers will occur at a few places the other sea areas around the island.

Wind speed will be (20-30) kmph. Wind speed can be increased up to 45 kmph and the sea condition can be fairly rough at times in the sea areas extending from Puttalam to Trincomalee via Kankasanturai and from Galle to Pottuvil via Hambantota.

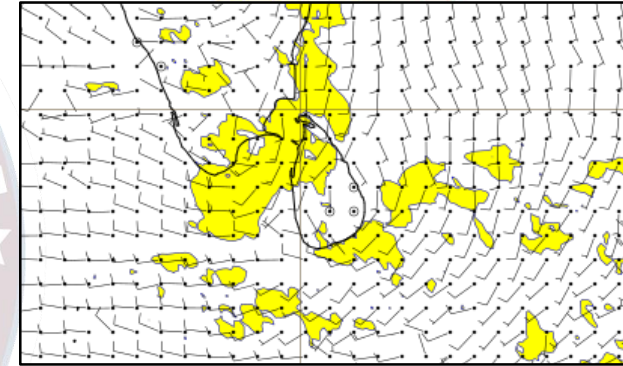
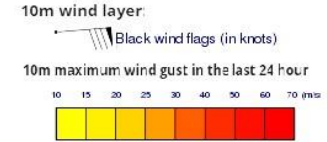
Wind and Rainfall Forecast (Total precipitation for 24 hrs)



Significant wave height (in meters)



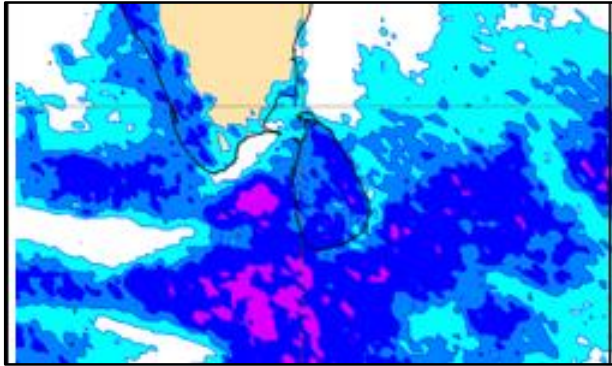
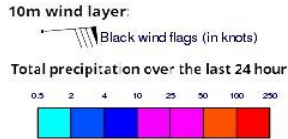
Wind Gust (m/s)



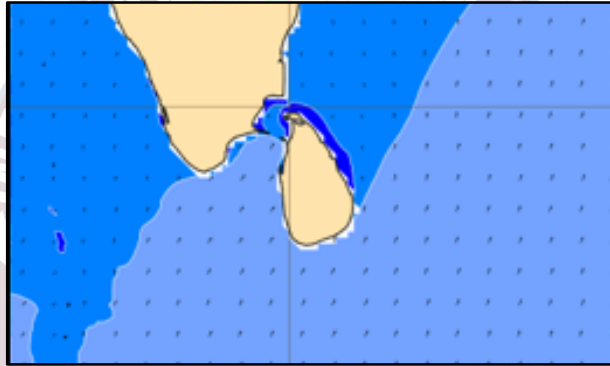
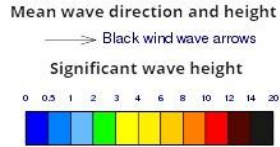
Showers or thundershowers will occur at several places in the sea areas extending from Puttalam to Galle via Colombo. Showers or thundershowers will occur at a few places the other sea areas around the island.

Wind speed will be (20-30) kmph. Wind speed can be increased up to 45 kmph and the sea condition can be fairly rough at times in the sea areas extending from Puttalam to Trincomalee via Kankasanturai and from Galle to Pottuvil via Hambantota.

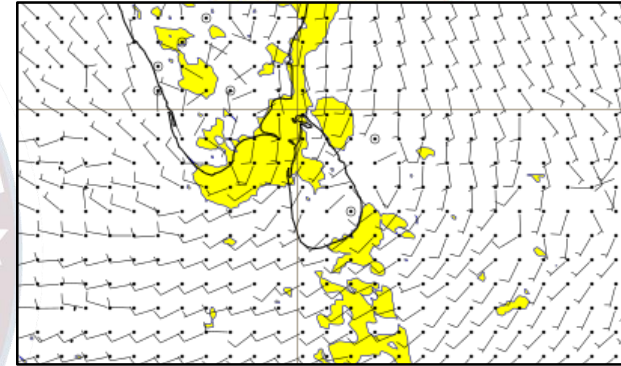
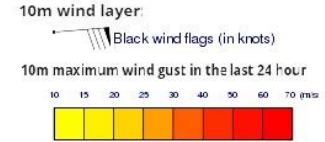
Wind and Rainfall Forecast (Total precipitation for 24 hrs)



Significant wave height (in meters)



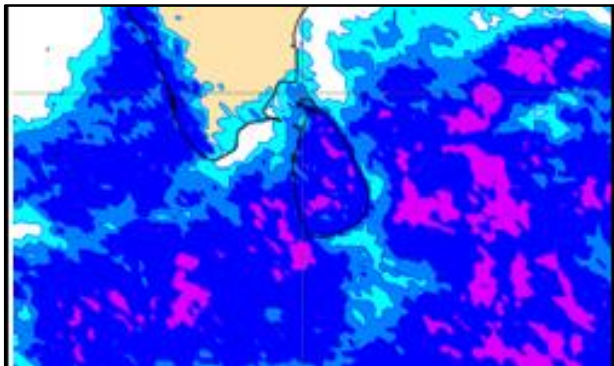
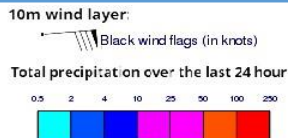
Wind Gust (m/s)



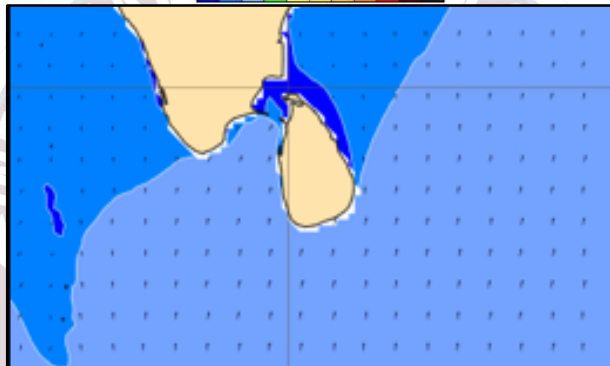
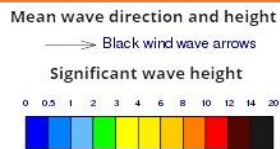
Showers or thundershowers will occur at several places in the sea areas extending from Puttalam to Galle via Colombo. Showers or thundershowers will occur at a few places the other sea areas around the island.

Wind speed will be (20-30) kmph. Wind speed can be increased up to 45 kmph and the sea condition can be fairly rough at times in the sea areas extending from Puttalam to Trincomalee via Kankasanturai and from Galle to Pottuvil via Hambantota.

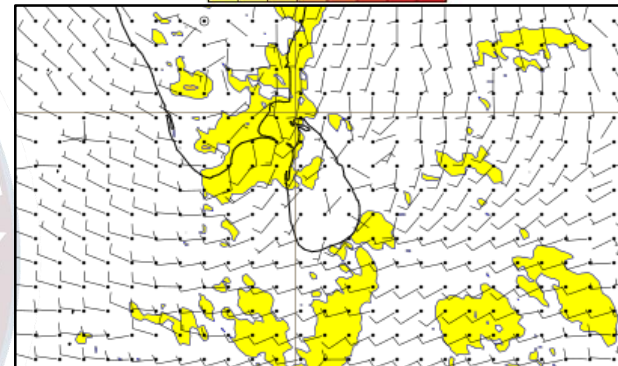
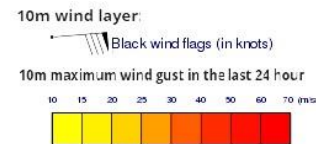
Wind and Rainfall Forecast (Total precipitation for 24 hrs)



Significant wave height (in meters)



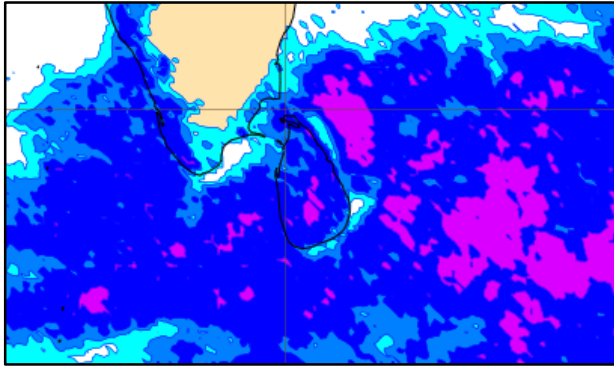
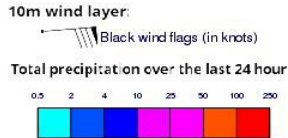
Wind Gust (m/s)



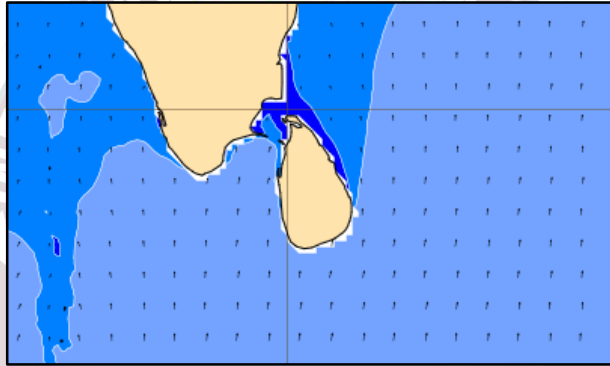
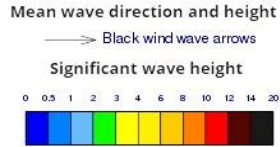
Showers or thundershowers will occur at several places in the sea areas extending from Puttalam to Galle via Colombo. Showers or thundershowers will occur at a few places the other sea areas around the island.

Wind speed will be (20-30) kmph. Wind speed can be increased up to 45 kmph and the sea condition can be fairly rough at times in the sea areas extending from Puttalam to Kankasanturai via Mannar and from Hambantota to Pottuvil.

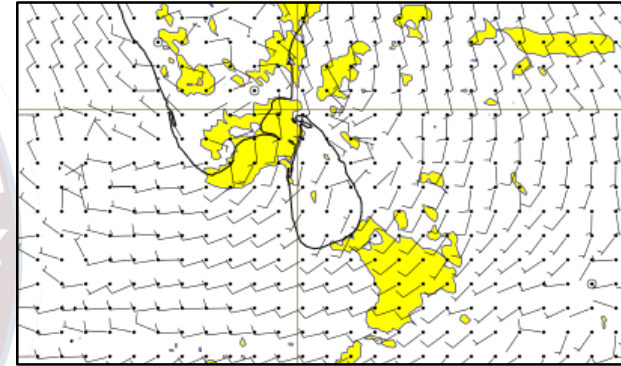
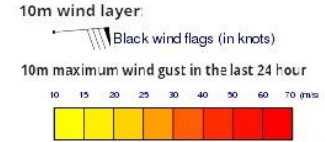
Wind and Rainfall Forecast (Total precipitation for 24 hrs)



Significant wave height (in meters)



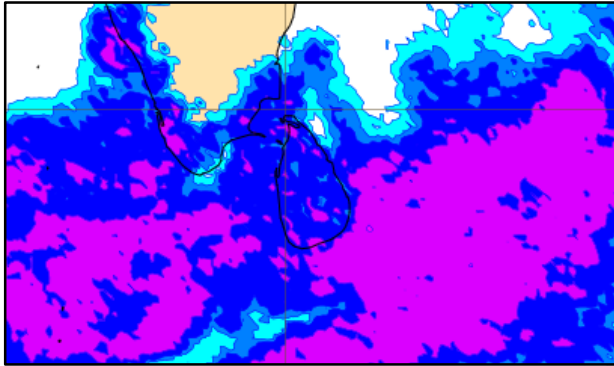
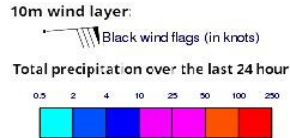
Wind Gust (m/s)



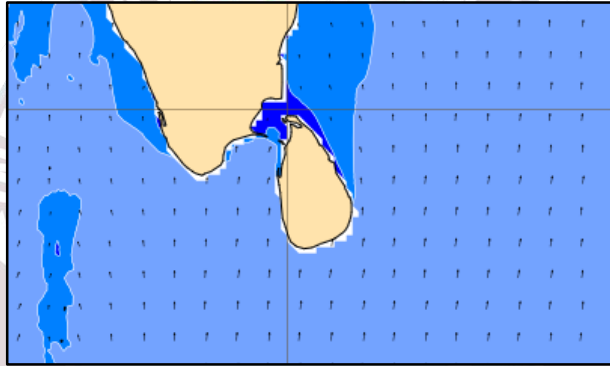
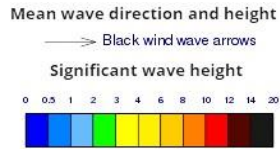
Showers or thundershowers will occur at several places the other sea areas around the island.

Wind speed will be (20-30) kmph. Wind speed can be increased up to 45 kmph and the sea condition can be fairly rough at times in the sea areas extending from Puttalam to Kankasanturai via Mannar and from Hambantota to Pottuvil.

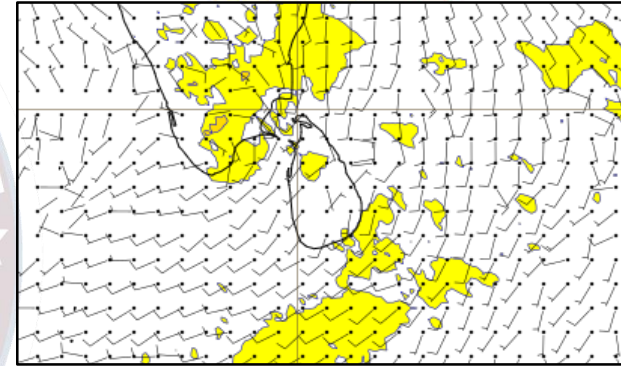
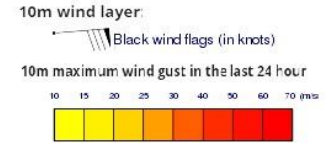
Wind and Rainfall Forecast (Total precipitation for 24 hrs)



Significant wave height (in meters)



Wind Gust (m/s)



Showers or thundershowers will occur at several places the other sea areas around the island.

Wind speed will be (20-30) kmph.



Thank you!