

08 DAYS WEATHER FORECAST FOR COASTAL AREAS AROUND SRI LANKA

Storm Direction



WARNING

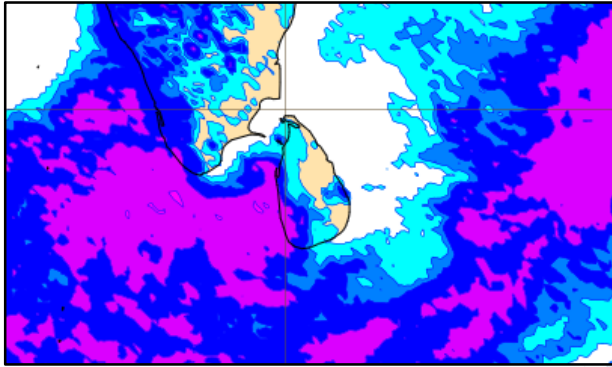
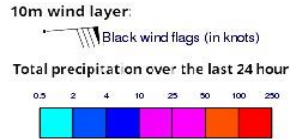


**INFORMATION FUSION CENTRE
COLOMBO**

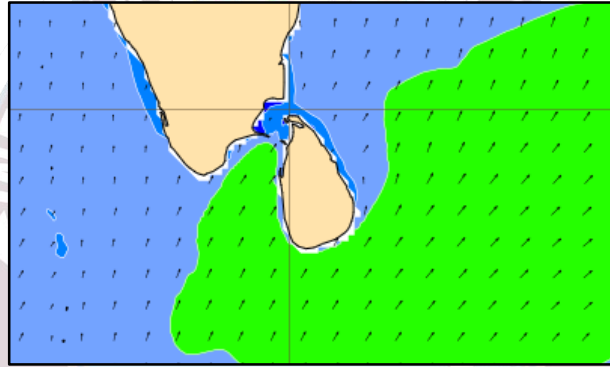
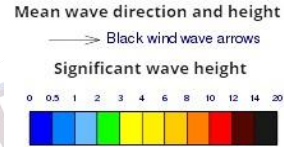


Issued at 0400 p.m. on 10th April 2025
Marine Weather Division, National Meteorological Centre, Department of
Meteorology, Sri Lanka

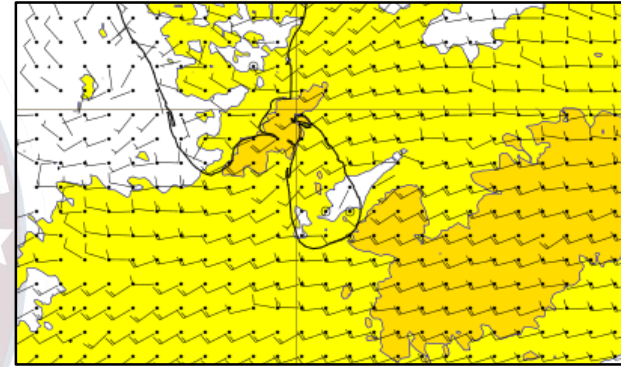
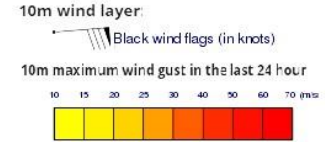
Wind and Rainfall Forecast (Total precipitation for 24 hrs)



Significant wave height (in meters)



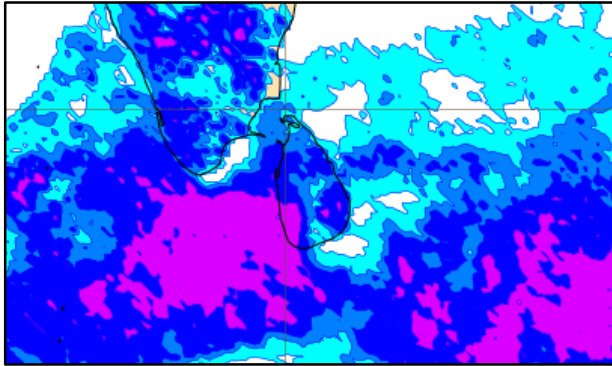
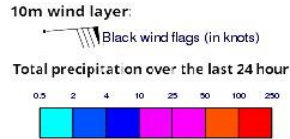
Wind Gust (m/s)



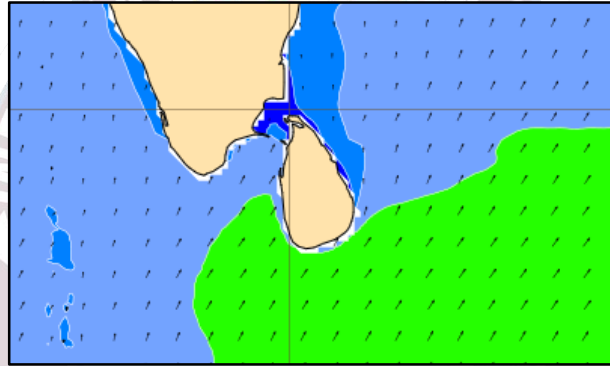
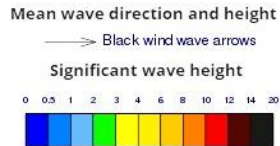
Showers or thundershowers will occur at several places in the sea areas extending from Puttalam to Galle via Colombo. Showers or thundershowers will occur at a few places over the other sea areas around the island

Wind speed will be (30-40) kmph. Wind speed can increase up to 60 kmph at times and the sea condition will be rough at times in the sea areas extending from Pottuvil to Hambantota and from Kankasaturai to Mannar. Wind speed can increase up to 50 kmph at times and the sea condition will be fairly rough at times in the sea areas extending from Mannar to Galle via Colombo

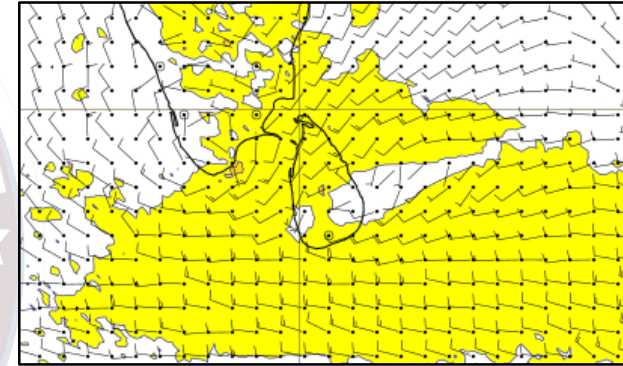
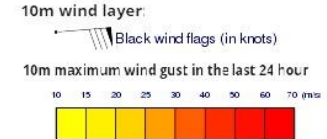
Wind and Rainfall Forecast (Total precipitation for 24 hrs)



Significant wave height (in meters)



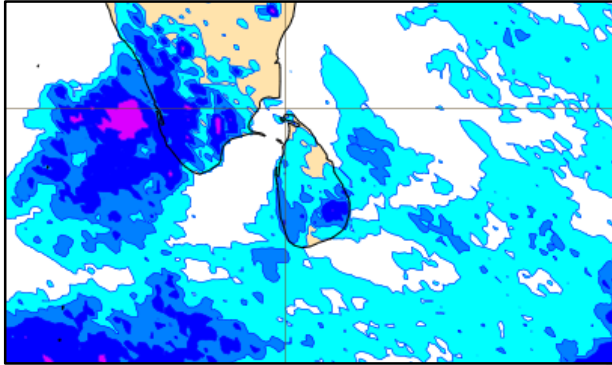
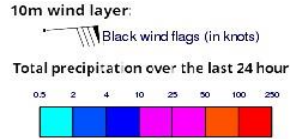
Wind Gust (m/s)



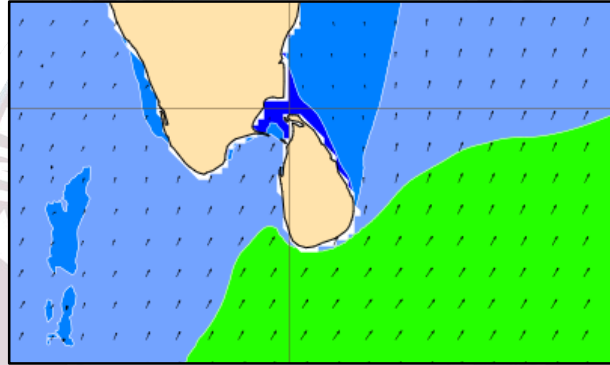
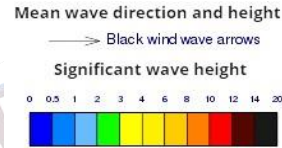
Showers or thundershowers will occur at several places in the sea areas extending from Puttalam to Galle via Colombo. Showers or thundershowers will occur at a few places over the other sea areas around the island

Wind speed will be (30-40) kmph. Wind speed can increase up to 50 kmph at times and the sea condition will be fairly rough at times in the sea areas extending from Pottuvil to Hambantota and from Kankasaturai to Mannar

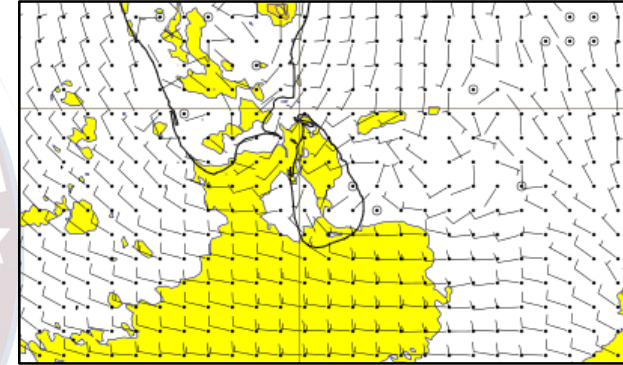
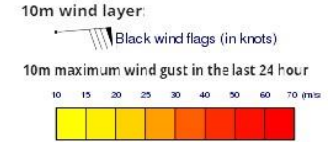
Wind and Rainfall Forecast (Total precipitation for 24 hrs)



Significant wave height (in meters)



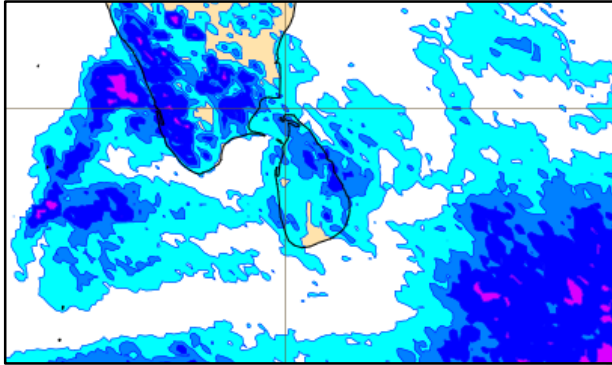
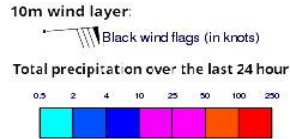
Wind Gust (m/s)



Showers or thundershowers will occur at a few places in the sea areas extending from Puttalam to Batticaloa via Colombo and Galle

Wind speed will be (30-40) kmph

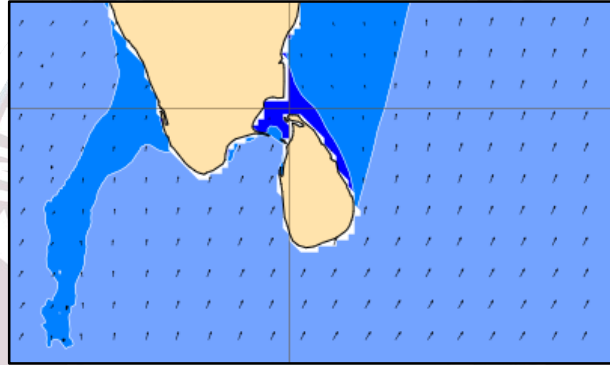
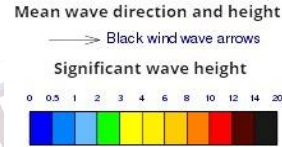
Wind and Rainfall Forecast (Total precipitation for 24 hrs)



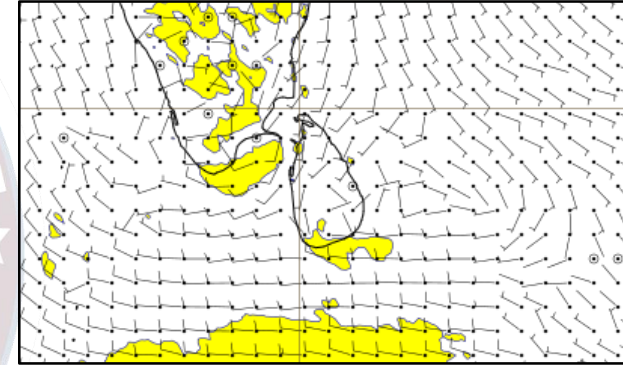
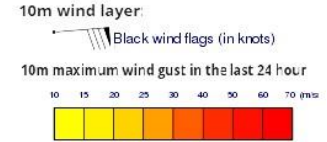
Showers or thundershowers will occur at a few places in the sea areas around the island

Wind speed will be (25-35) kmph

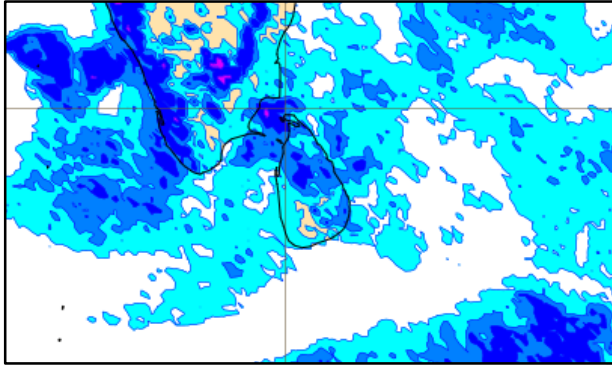
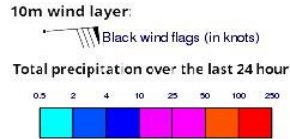
Significant wave height (in meters)



Wind Gust (m/s)



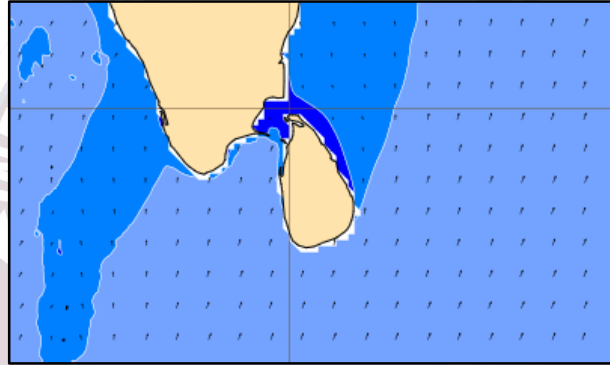
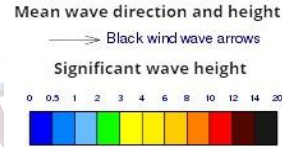
Wind and Rainfall Forecast (Total precipitation for 24 hrs)



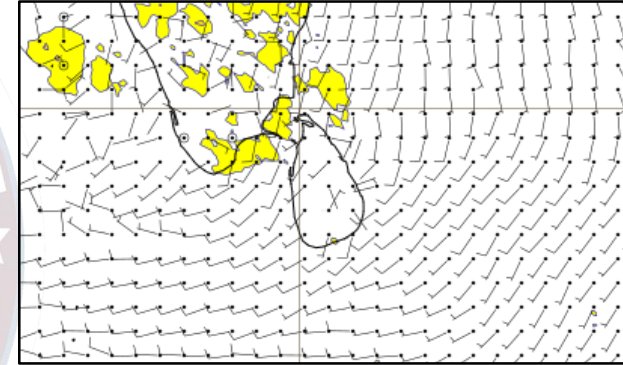
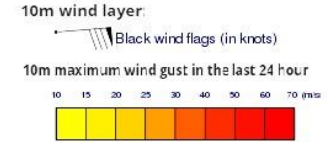
Showers or thundershowers will occur at a few places in the sea areas around the island.

Wind speed will be (25-35) kmph.

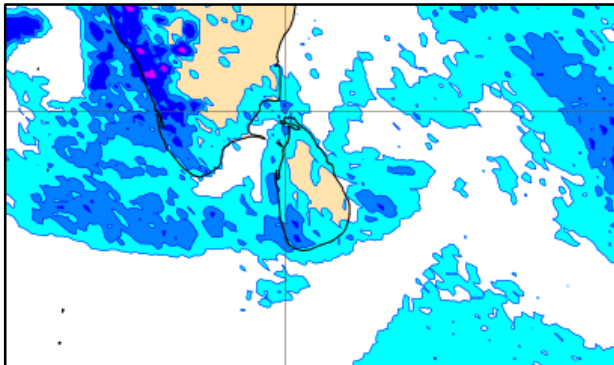
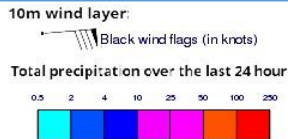
Significant wave height (in meters)



Wind Gust (m/s)



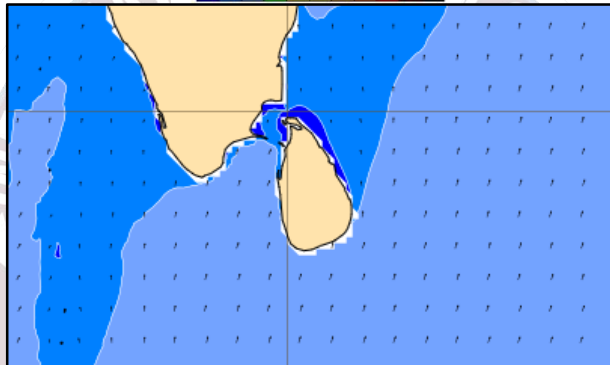
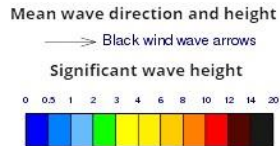
Wind and Rainfall Forecast (Total precipitation for 24 hrs)



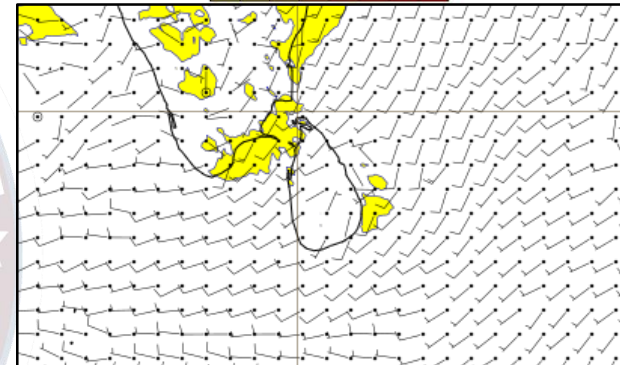
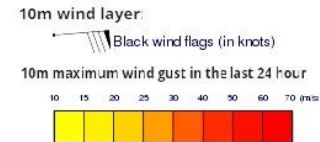
Showers or thundershowers will occur at a few places in the sea areas around the island

Wind speed will be (25-35) kmph

Significant wave height (in meters)



Wind Gust (m/s)



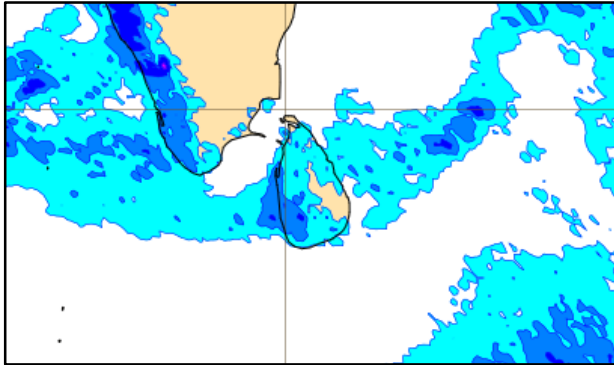
Wind and Rainfall Forecast (Total precipitation for 24 hrs)

10m wind layer:

Black wind flags (in knots)

Total precipitation over the last 24 hour

0.5 2 4 10 25 50 100 200



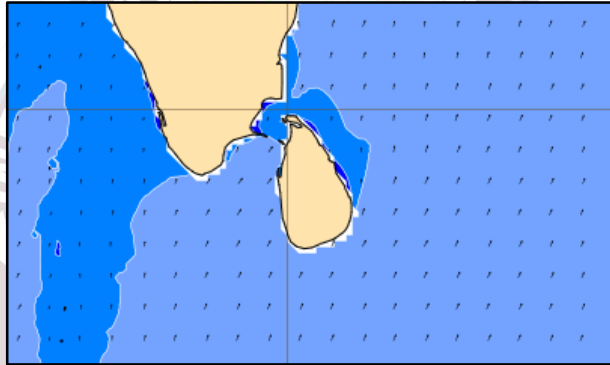
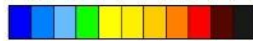
Significant wave height (in meters)

Mean wave direction and height

Black wind wave arrows

Significant wave height

0 0.5 1 2 3 4 6 8 10 12 14 20



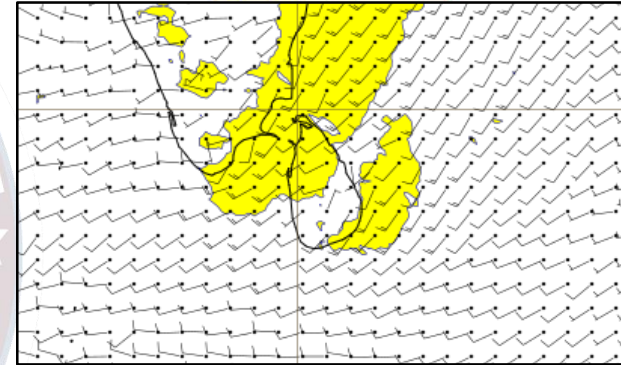
Wind Gust (m/s)

10m wind layer:

Black wind flags (in knots)

10m maximum wind gust in the last 24 hour

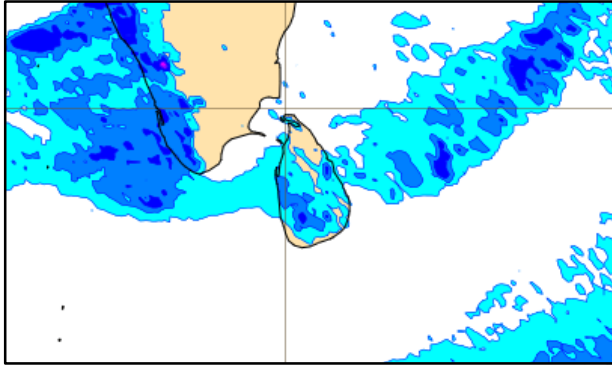
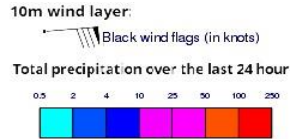
10 15 20 25 30 40 50 60 70 (km/h)



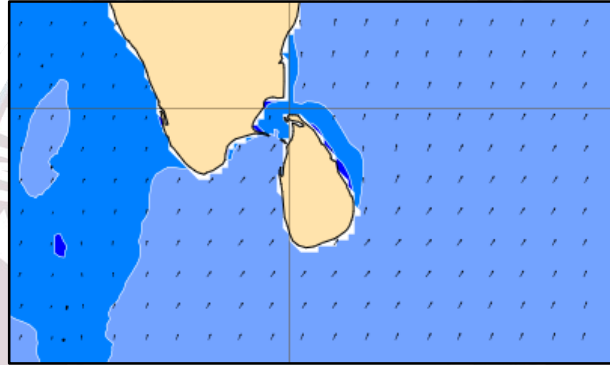
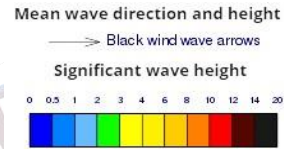
Showers or thundershowers will occur at a few places in the sea areas around the island

Wind speed will be (25-35) kmph

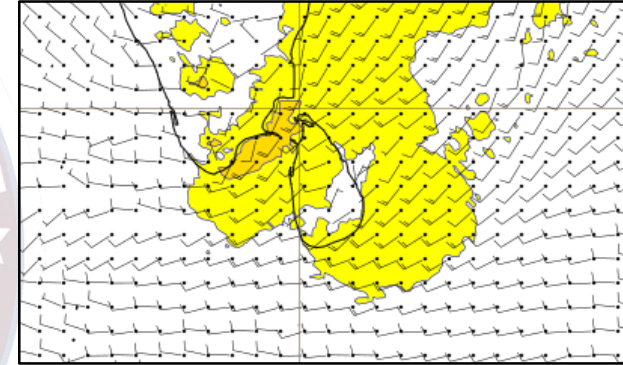
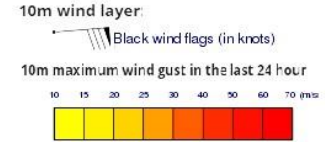
Wind and Rainfall Forecast (Total precipitation for 24 hrs)



Significant wave height (in meters)



Wind Gust (m/s)



Showers or thundershowers will occur at a few places in the sea areas around the island

Wind speed will be (30-40) kmph, Wind speed can increase up to 50-60 kmph at times and the sea condition will be rough at times in the sea areas extending from Pottuvil to Hambantota and from Kankasaturai to Mannar



Thank you!