

08 DAYS WEATHER FORECAST FOR COASTAL AREAS AROUND SRI LANKA


Storm Direction



WARNING

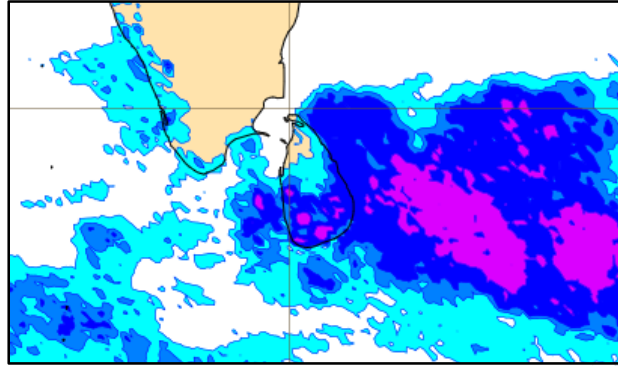
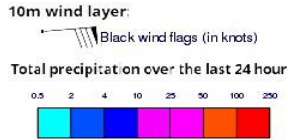


**INFORMATION FUSION CENTRE
COLOMBO**

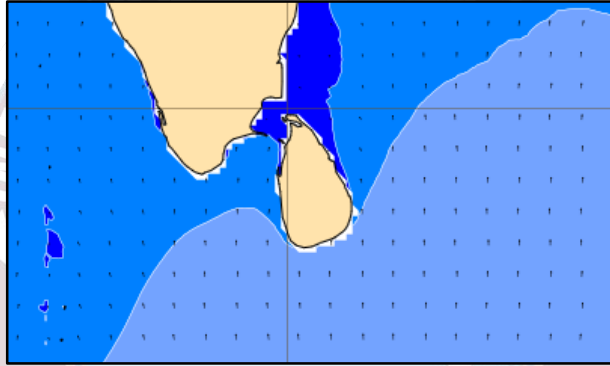
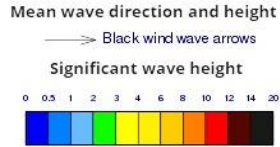


Issued at 0400 p.m. on 14th March 2025
Marine Weather Division, National Meteorological Centre, Department of
Meteorology, Sri Lanka

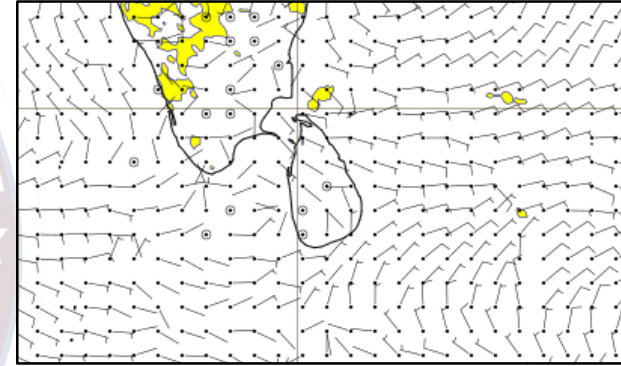
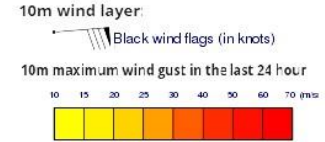
Wind and Rainfall Forecast (Total precipitation for 24 hrs)



Significant wave height (in meters)



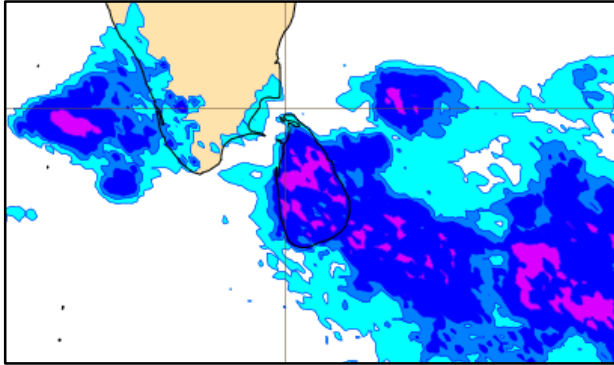
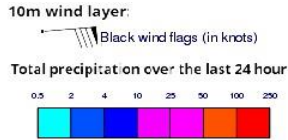
Wind Gust (m/s)



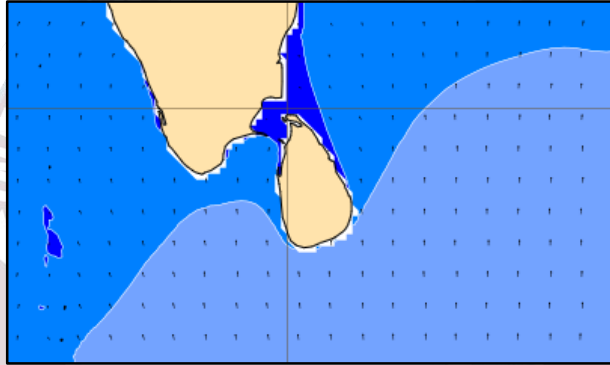
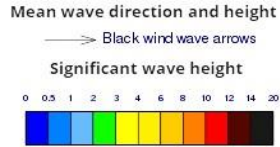
Showers or thundershowers will occur at several places in the sea areas extending from Hambantota to Kankasanturai via Pottuvil and Trincomalee. Showers or thundershowers will occur at a few places over the other sea areas around the island.

Wind speed will be (25-35) kmph.

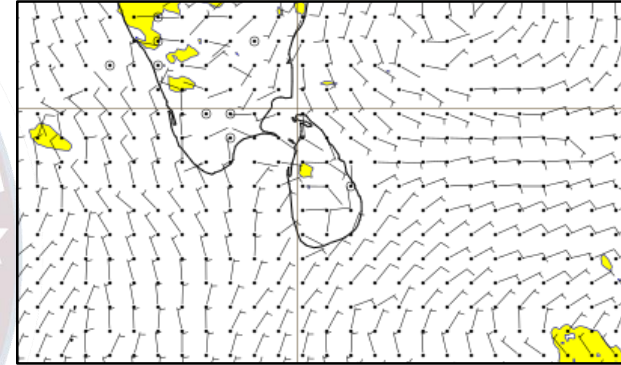
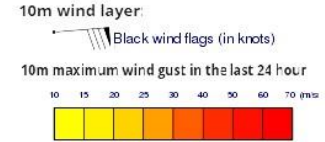
Wind and Rainfall Forecast (Total precipitation for 24 hrs)



Significant wave height (in meters)



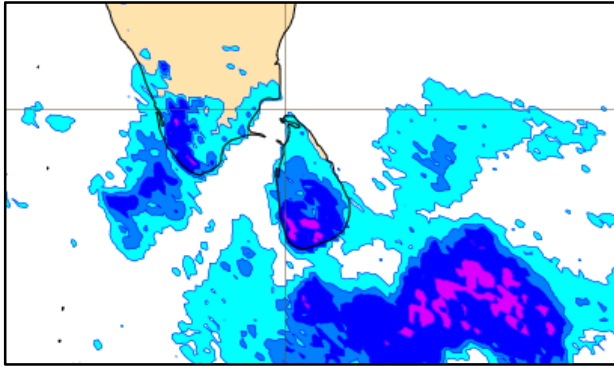
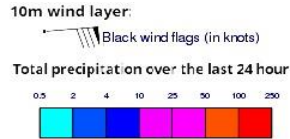
Wind Gust (m/s)



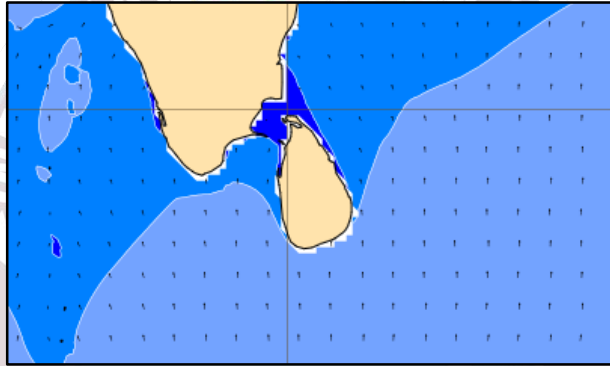
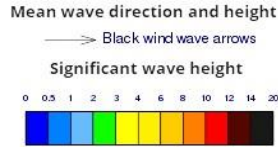
Showers or thundershowers will occur at several places in the sea areas extending from Hambantota to Trincomalee via Pottuvil. Showers or thundershowers will occur at a few places over the other sea areas around the island.

Wind speed will be (25-35) kmph.

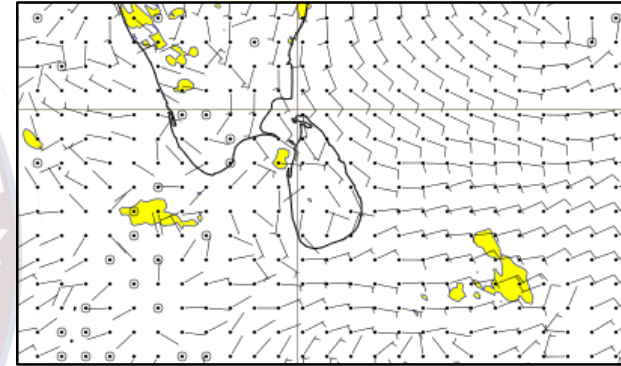
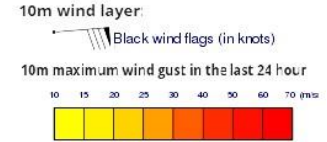
Wind and Rainfall Forecast (Total precipitation for 24 hrs)



Significant wave height (in meters)

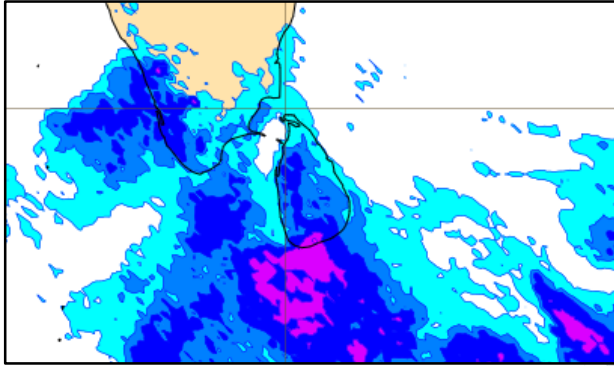
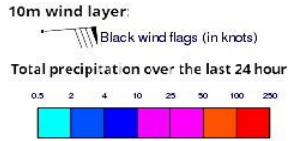


Wind Gust (m/s)

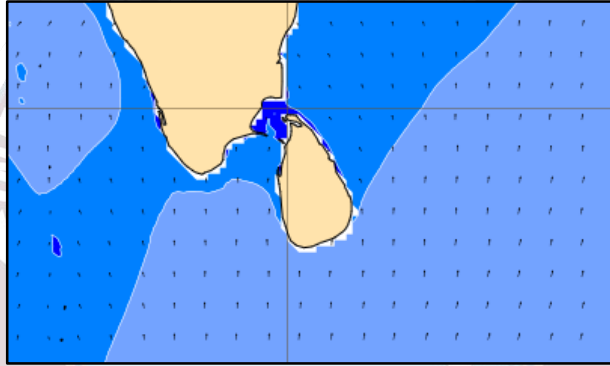
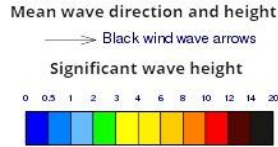


Showers or thundershowers will occur at a few places in the sea areas extending from Hambantota to Pottuvil.
Wind speed will be (20-30) kmph.

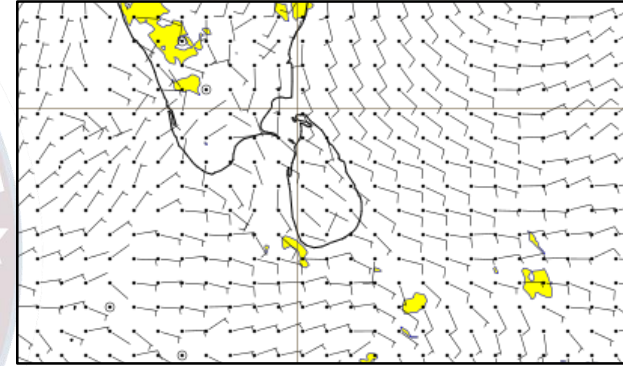
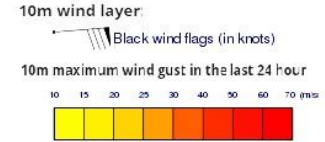
Wind and Rainfall Forecast (Total precipitation for 24 hrs)



Significant wave height (in meters)



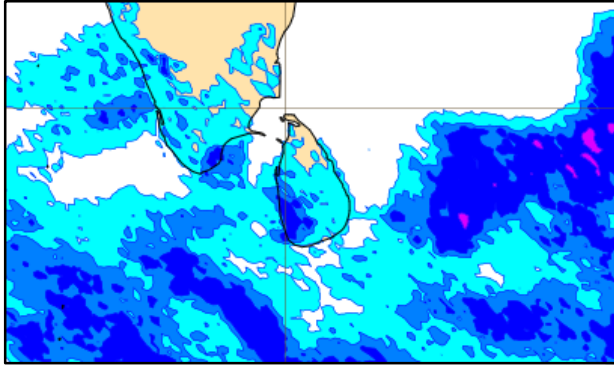
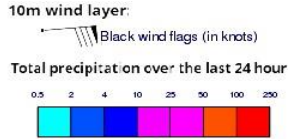
Wind Gust (m/s)



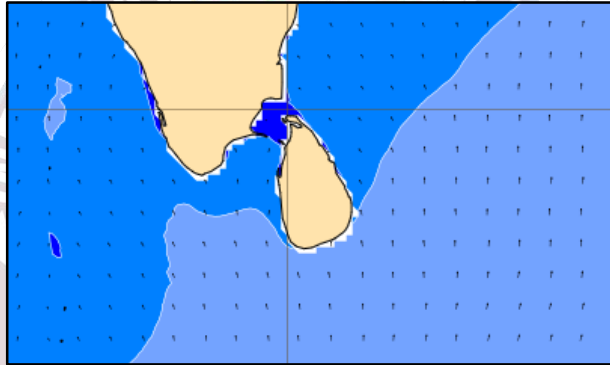
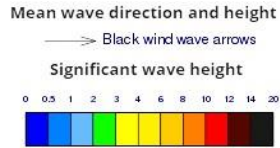
Showers or thundershowers will occur at several places in the sea areas extending from Galle to Pottuvil via Hambantota. Showers or thundershowers will occur at a few places over the other sea areas around the island.

Wind speed will be (20-30) kmph.

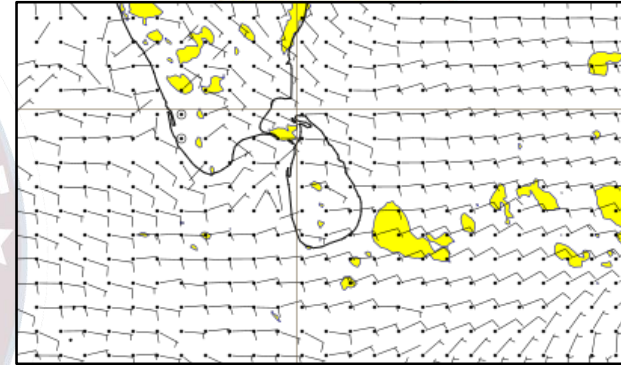
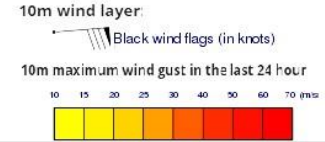
Wind and Rainfall Forecast (Total precipitation for 24 hrs)



Significant wave height (in meters)



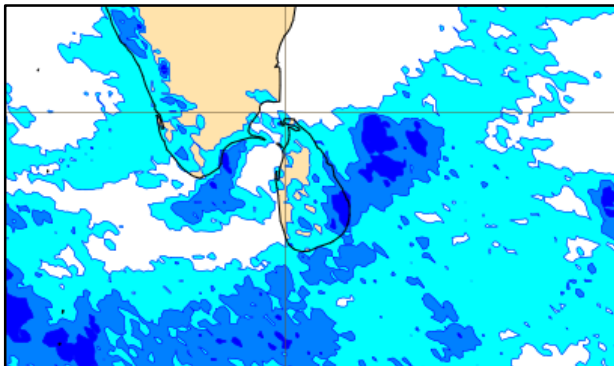
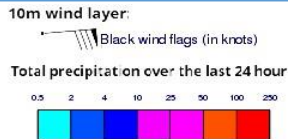
Wind Gust (m/s)



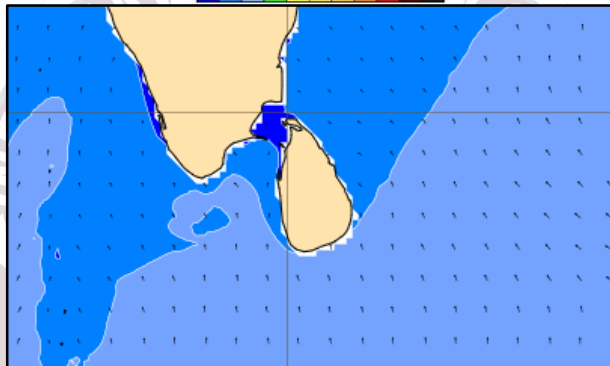
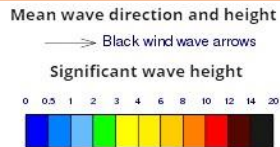
Showers or thundershowers will occur at a few places in the sea areas extending from Puttalam to Matara via Colombo and Galle. Mainly fair weather will prevail over the other sea areas around the island.

Wind speed will be (20-30) kmph.

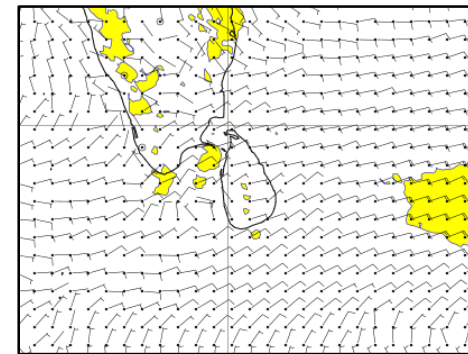
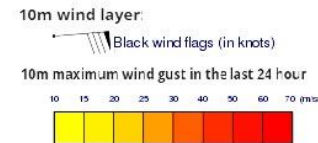
Wind and Rainfall Forecast (Total precipitation for 24 hrs)



Significant wave height (in meters)



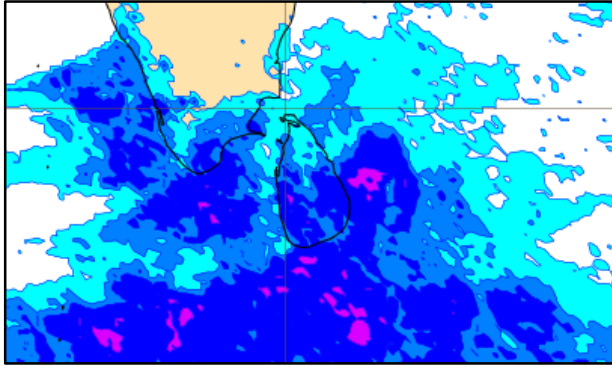
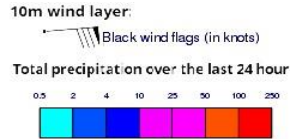
Wind Gust (m/s)



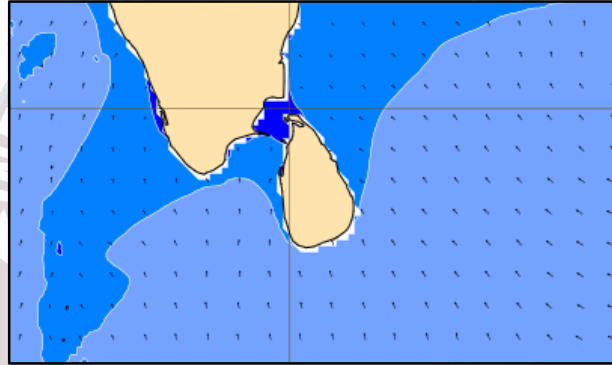
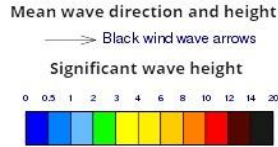
Showers or thundershowers will occur at several places in the sea areas extending from Galle to Batticaloa via Hambantota and Pottuvil. Showers or thundershowers will occur at a few places over the other sea areas around the island.

Wind speed will be (25-35) kmph.

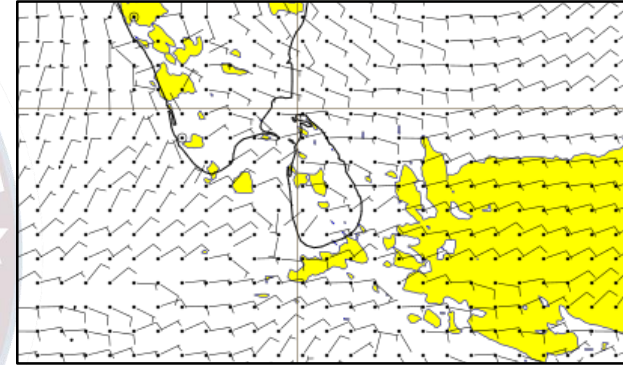
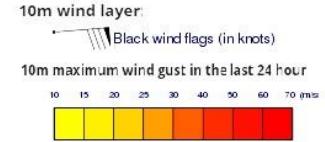
Wind and Rainfall Forecast (Total precipitation for 24 hrs)



Significant wave height (in meters)



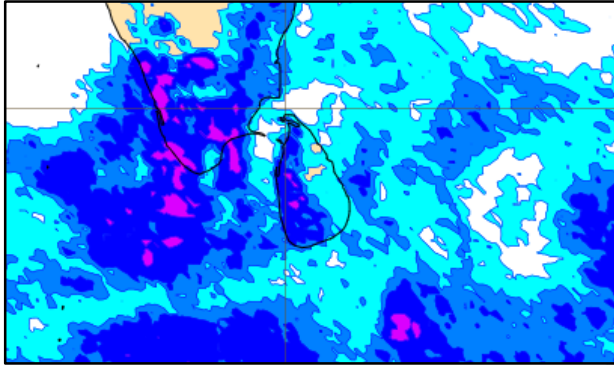
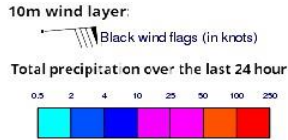
Wind Gust (m/s)



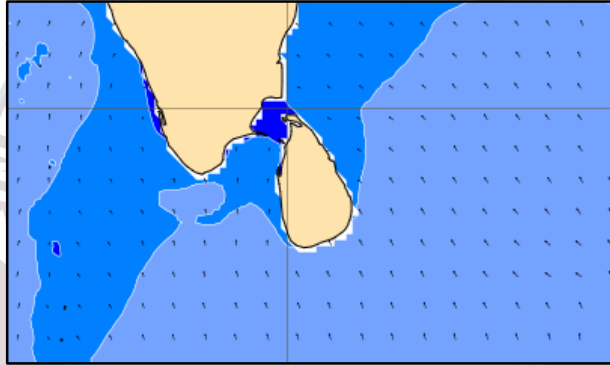
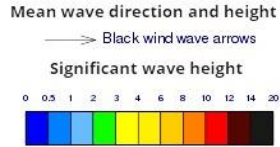
Showers or thundershowers will occur at several places in the sea areas extending from Galle to Trincomalee via Hambantota and Pottuvil. Showers or thundershowers will occur at a few places over the other sea areas around the island.

Wind speed will be (25-35) kmph.

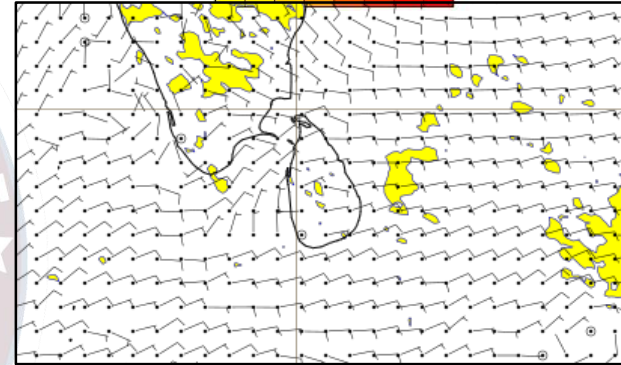
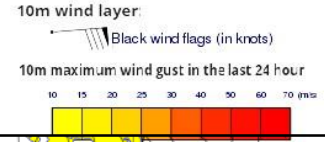
Wind and Rainfall Forecast (Total precipitation for 24 hrs)



Significant wave height (in meters)



Wind Gust (m/s)



Showers or thundershowers will occur at several places in the sea areas extending from Puttalam to Matara via Colombo and Galle. Showers or thundershowers will occur at a few places over the other sea areas around the island.

Wind speed will be (25-35) kmph.



Thank you!