

08 DAYS WEATHER FORECAST FOR COASTAL AREAS AROUND SRI LANKA


Storm Direction



WARNING

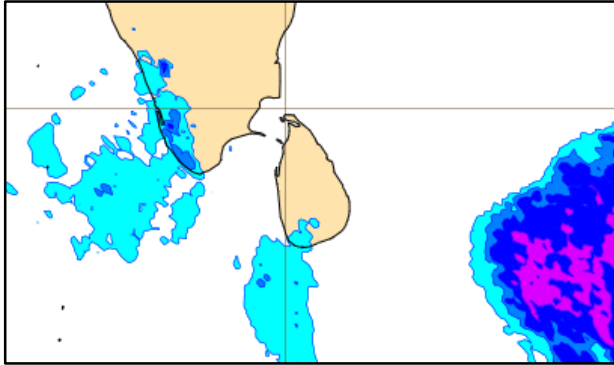
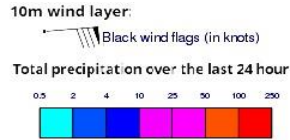


**INFORMATION FUSION CENTRE
COLOMBO**

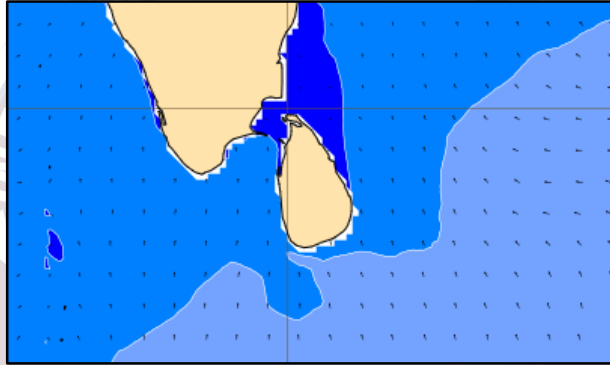
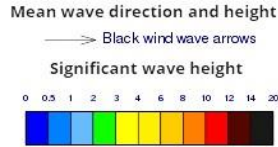


Issued at 0400 p.m. on 07th March 2025
Marine Weather Division, National Meteorological Centre, Department of
Meteorology, Sri Lanka

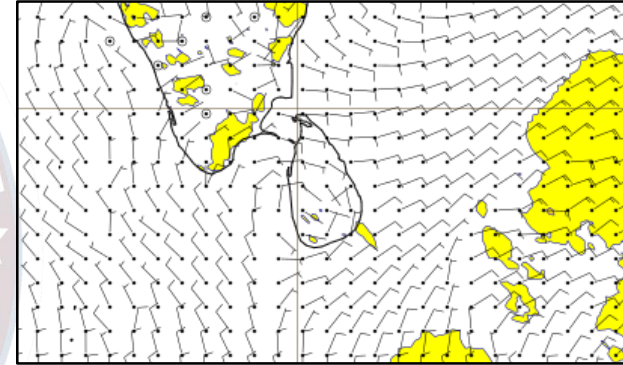
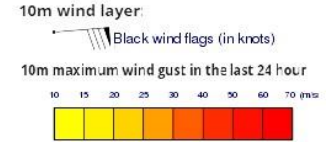
Wind and Rainfall Forecast (Total precipitation for 24 hrs)



Significant wave height (in meters)



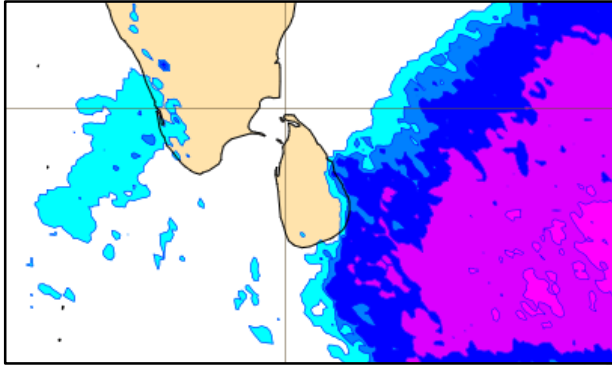
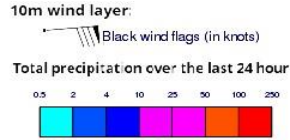
Wind Gust (m/s)



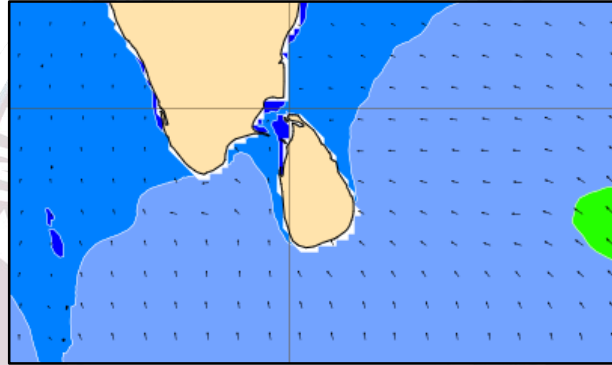
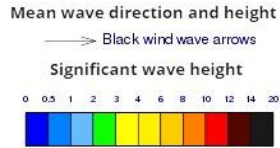
Mainly fair weather will prevail over the sea areas around the island.

Wind speed will be (25-35) kmph.

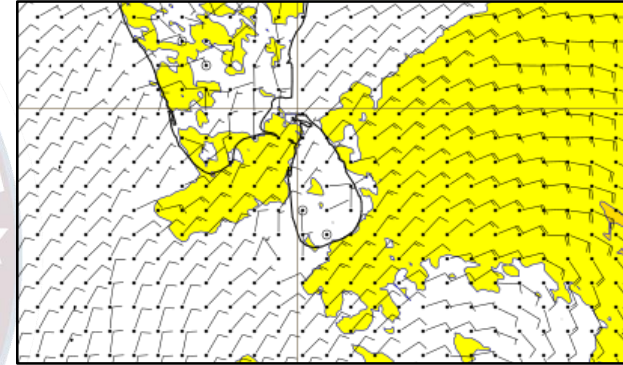
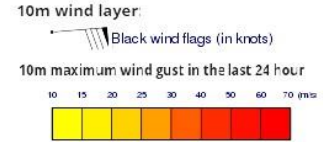
Wind and Rainfall Forecast (Total precipitation for 24 hrs)



Significant wave height (in meters)



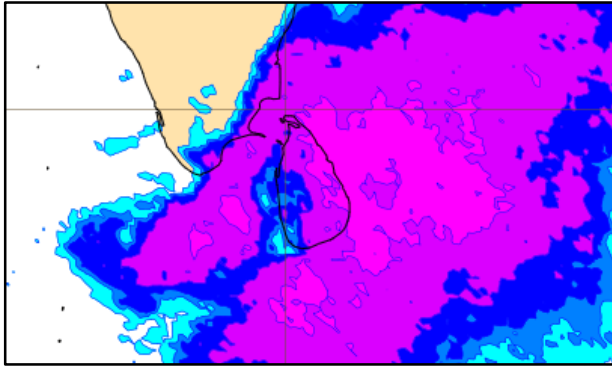
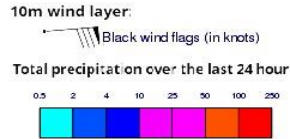
Wind Gust (m/s)



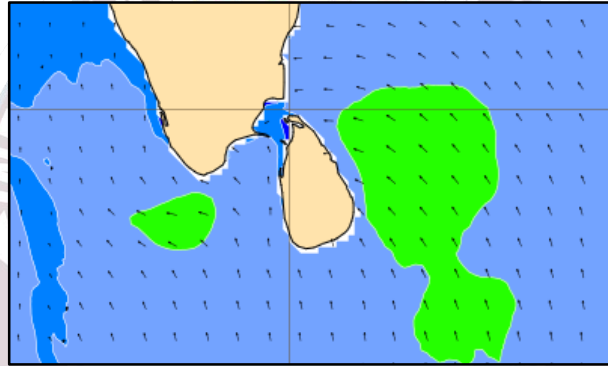
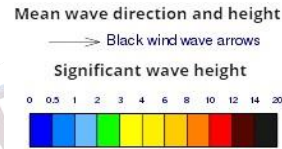
Showers or thundershowers will occur at several places in the sea areas extending from Batticaloa to Pottuvil. Mainly fair weather will prevail over the other sea areas around the island.

Wind speed will be (20-30) kmph, can be increased up to **40-50** kmph at times and can be fairly rough at times in the sea areas except from Colombo to Galle via Kaluthara.

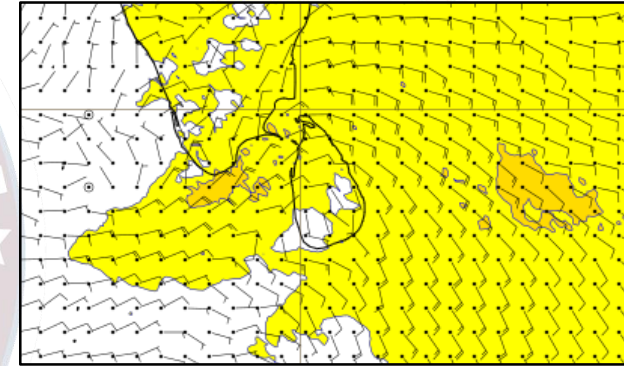
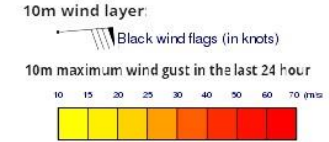
Wind and Rainfall Forecast (Total precipitation for 24 hrs)



Significant wave height (in meters)



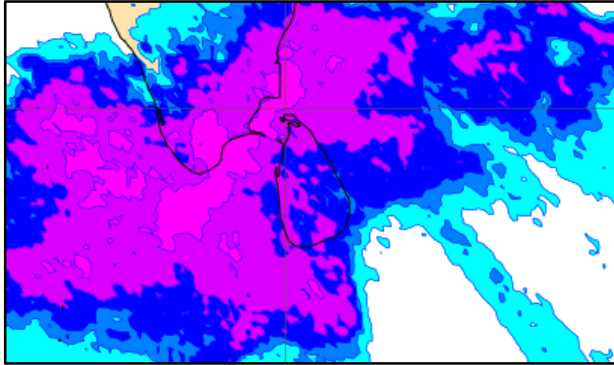
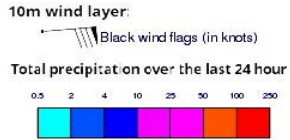
Wind Gust (m/s)



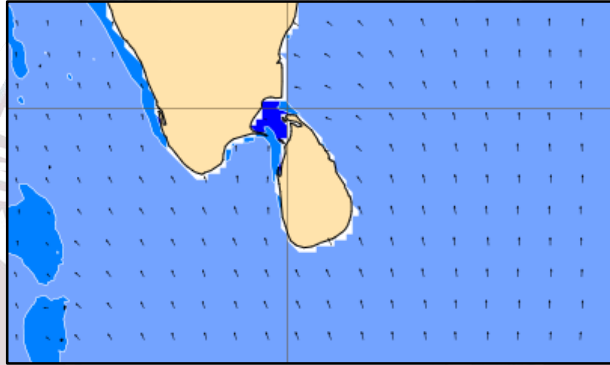
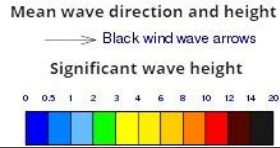
Showers or thundershowers will occur at several places in the sea areas around the island.

Wind speed will be (30-40) kmph. Wind speed can be increased up to **50-55** kmph at times and can be rough at times in the sea areas extending from Galle to Hambantota via Matara. Sea condition can be fairly rough at times in the other sea areas around the island.

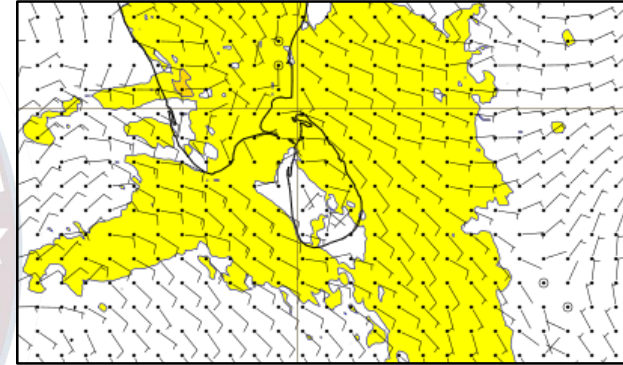
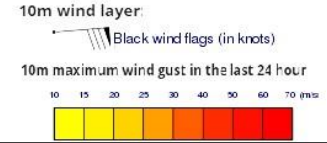
Wind and Rainfall Forecast (Total precipitation for 24 hrs)



Significant wave height (in meters)



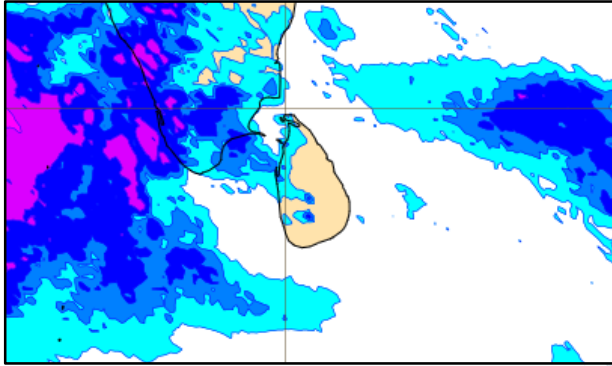
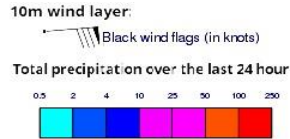
Wind Gust (m/s)



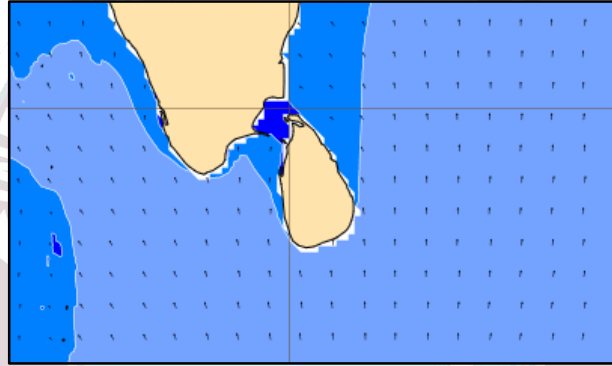
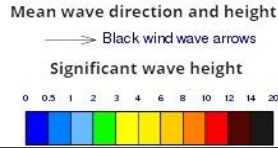
Showers or thundershowers will occur at several places in the sea areas around the island.

Wind speed will be (20-30) kmph, can be increased up to 40-50 kmph at times and can be fairly rough at times.

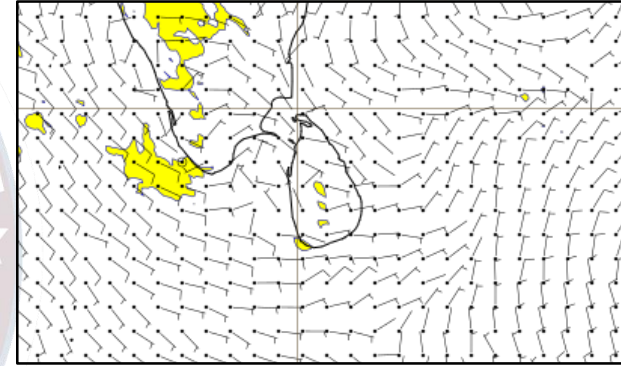
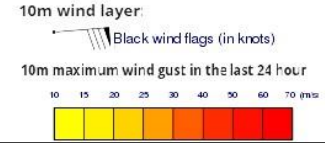
Wind and Rainfall Forecast (Total precipitation for 24 hrs)



Significant wave height (in meters)



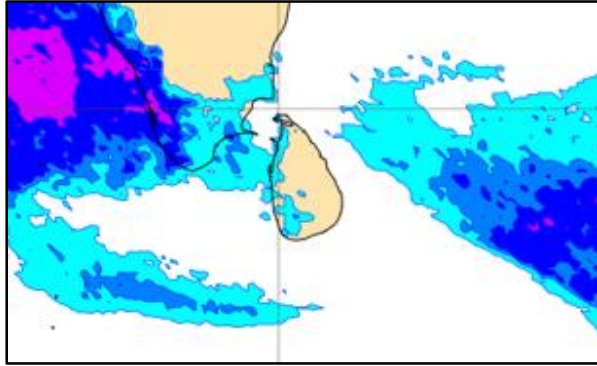
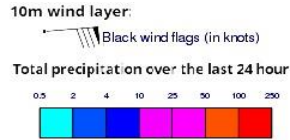
Wind Gust (m/s)



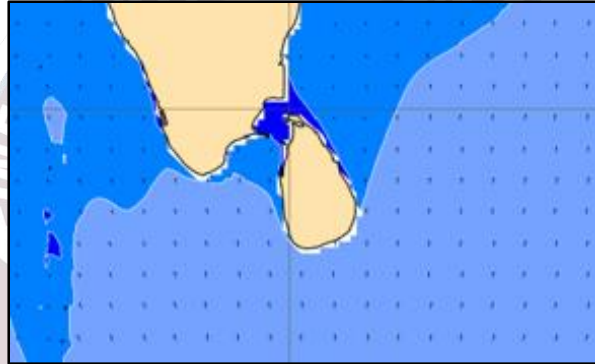
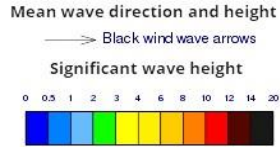
Showers or thundershowers will occur at a few places in the sea areas extending from Puttalam to Kankasanturai via Mannar. Mainly fair weather will prevail over the other sea areas around the island.

Wind speed will be (20-30) kmph.

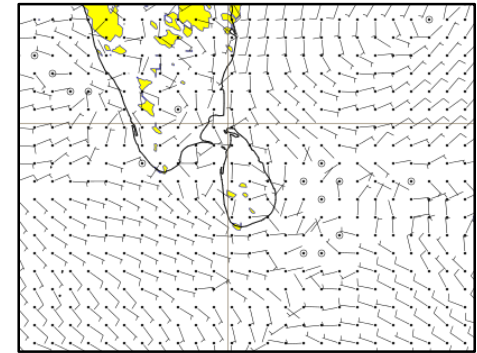
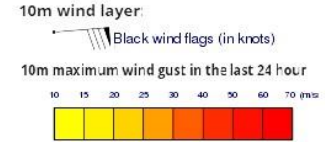
Wind and Rainfall Forecast (Total precipitation for 24 hrs)



Significant wave height (in meters)



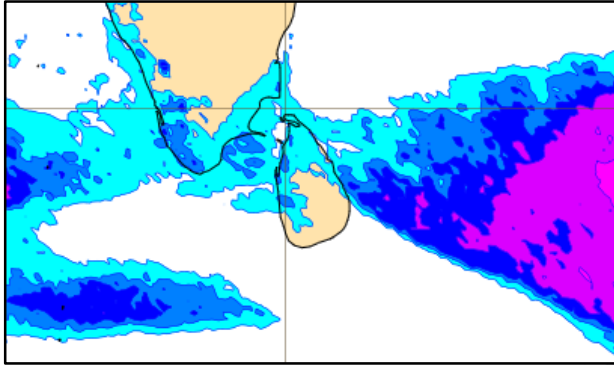
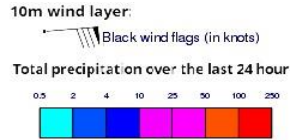
Wind Gust (m/s)



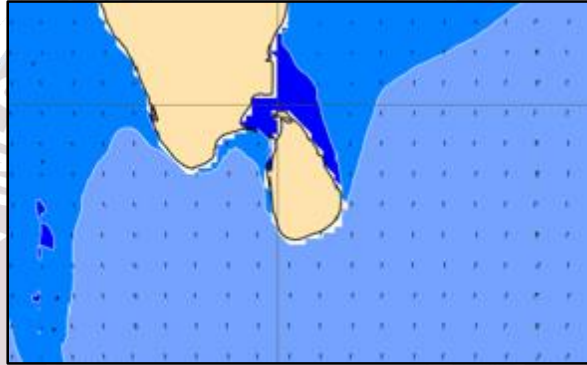
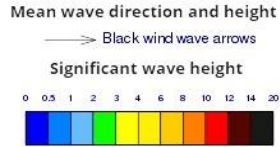
Showers or thundershowers will occur at a few places in the sea areas extending from Puttalam to Kankasanturai via Mannar. Mainly fair weather will prevail over the other sea areas around the island.

Wind speed will be (20-30) kmph.

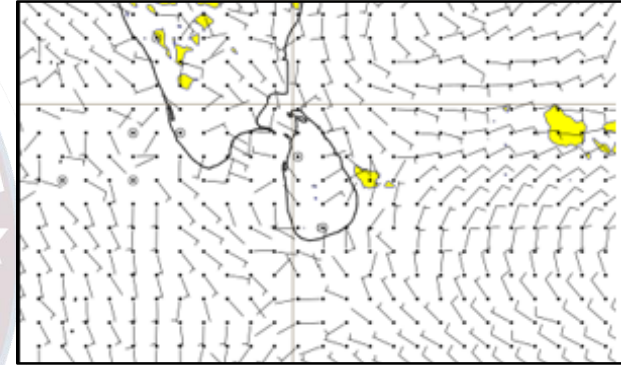
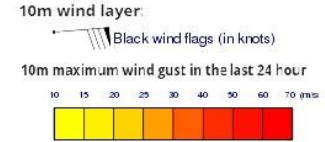
Wind and Rainfall Forecast (Total precipitation for 24 hrs)



Significant wave height (in meters)



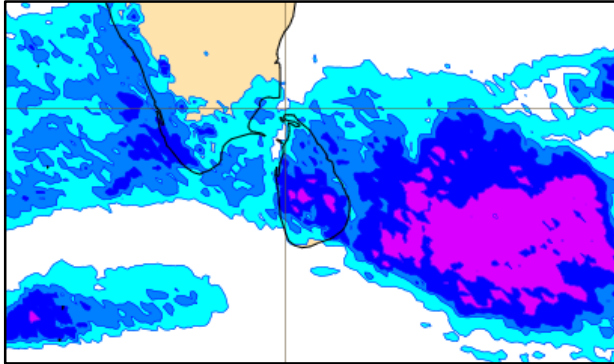
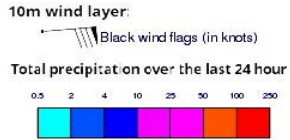
Wind Gust (m/s)



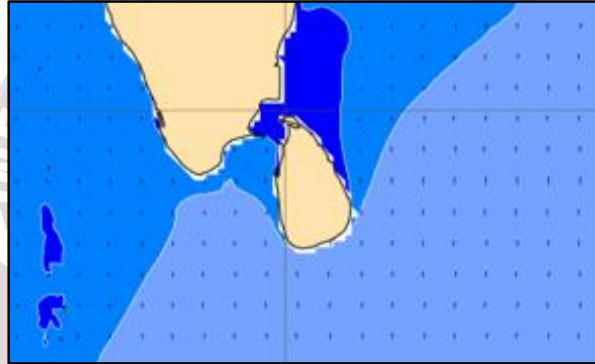
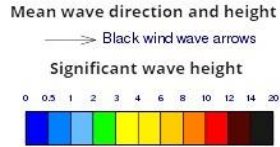
Showers or thundershowers will occur at a few places in the sea areas extending from Puttalam to Batticaloa via Kankasanturai. Mainly fair weather will prevail over the other sea areas around the island.

Wind speed will be (20-30) kmph.

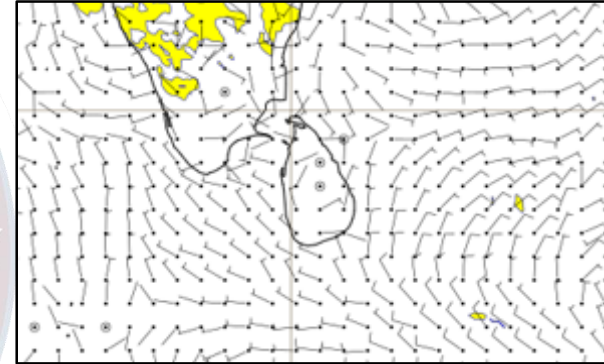
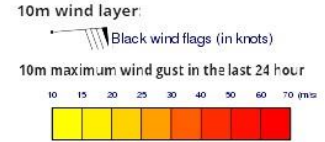
Wind and Rainfall Forecast (Total precipitation for 24 hrs)



Significant wave height (in meters)



Wind Gust (m/s)



Mainly fair weather will prevail over the sea areas around the island.

Wind speed will be (25-35) kmph.



Thank you!