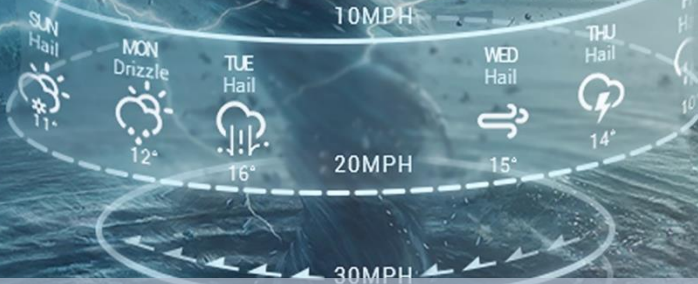



# 08 DAYS WEATHER FORECAST FOR COASTAL AREAS AROUND SRI LANKA

Storm Direction

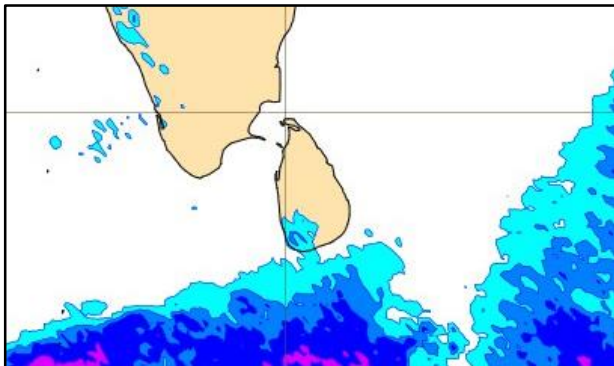
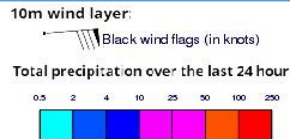


**INFORMATION FUSION CENTRE  
COLOMBO**

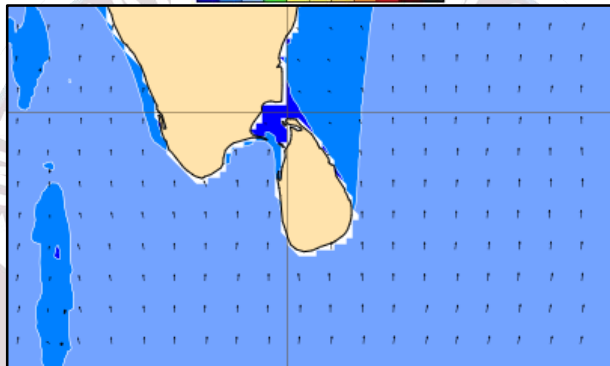
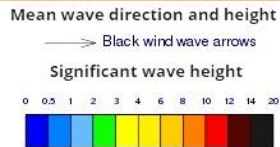


Issued at 0400 p.m. on 19<sup>th</sup> February 2025  
Marine Weather Division, National Meteorological Centre, Department of  
Meteorology, Sri Lanka

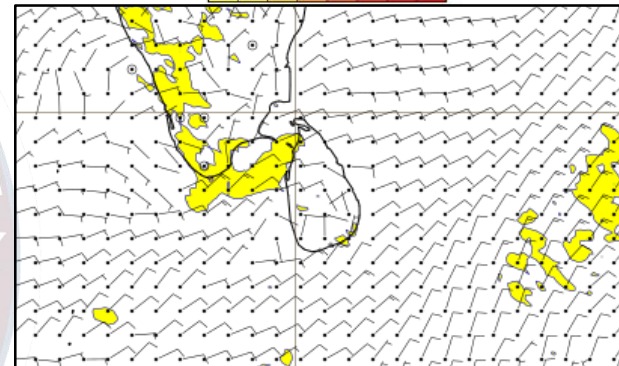
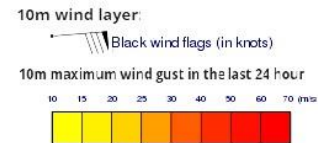
## Wind and Rainfall Forecast (Total precipitation for 24 hrs)



## Significant wave height (in meters)



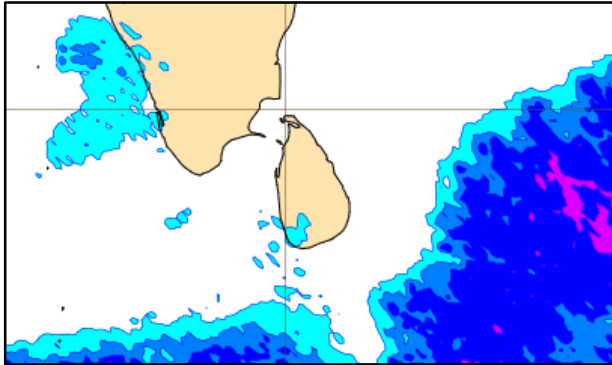
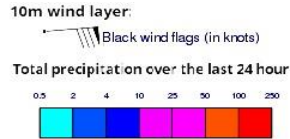
## Wind Gust (m/s)



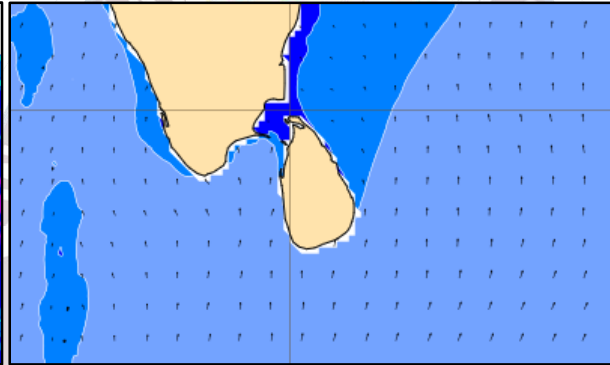
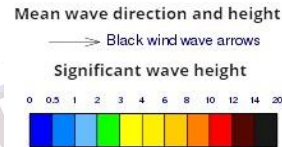
Mainly fair weather will prevail over the sea areas around the island.

Wind speed will be (20-30) kmph. Wind speed will increase up to 40-45 kmph at times and the sea condition can be fairly rough at times in the sea areas extending from Chilaw to Mannar via Puttalam.

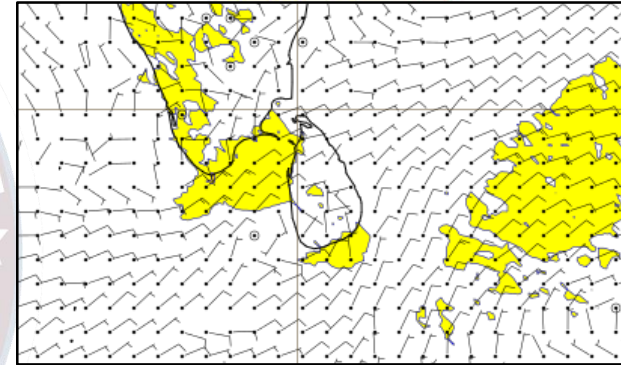
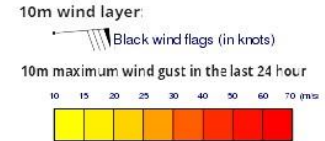
## Wind and Rainfall Forecast (Total precipitation for 24 hrs)



## Significant wave height (in meters)



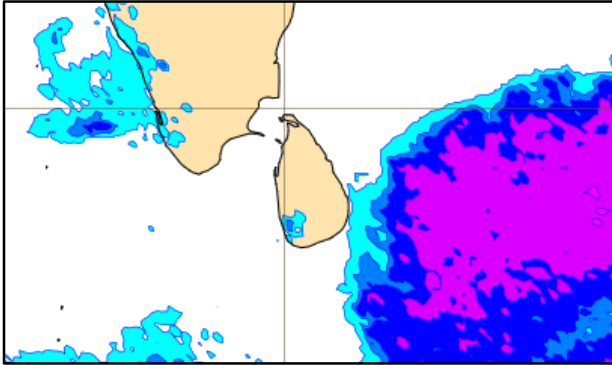
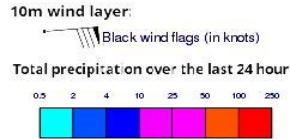
## Wind Gust (m/s)



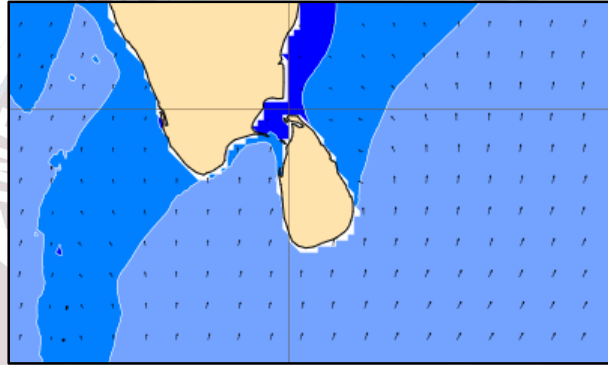
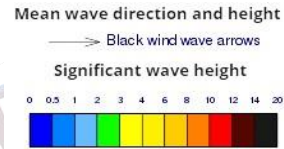
Mainly fair weather will prevail over the sea areas around the island.

Wind speed will be (20-30) kmph. Wind speed will increase up to 40-45 kmph at times and the sea condition can be fairly rough at times in the sea areas extending from Chilaw to Mannar via Puttalam and from Galle to Hambantota via Matara.

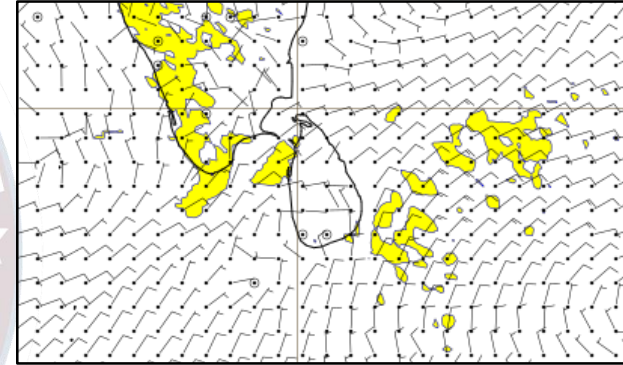
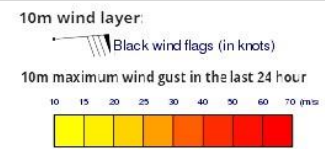
## Wind and Rainfall Forecast (Total precipitation for 24 hrs)



## Significant wave height (in meters)



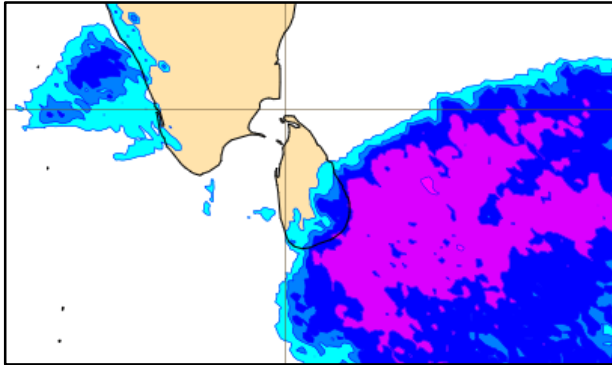
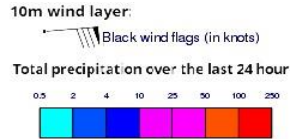
## Wind Gust (m/s)



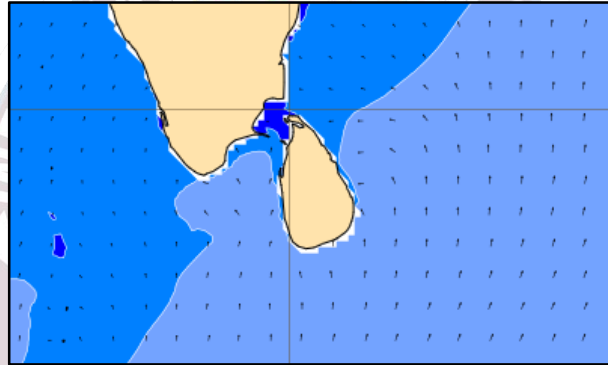
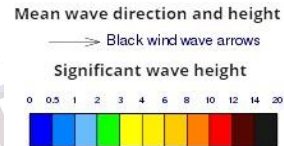
Mainly fair weather will prevail over the sea areas around the island except few showers in the sea areas extending from Hambantota to Batticaloa.

Wind speed will be (20-30) kmph. Wind speed will increase up to 40-45 kmph at times and the sea condition can be fairly rough at times in the sea areas extending from Puttalam to Mannar.

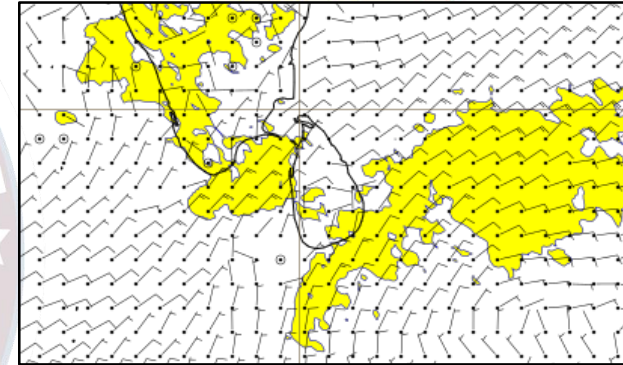
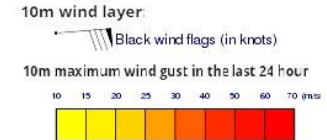
### Wind and Rainfall Forecast (Total precipitation for 24 hrs)



### Significant wave height (in meters)



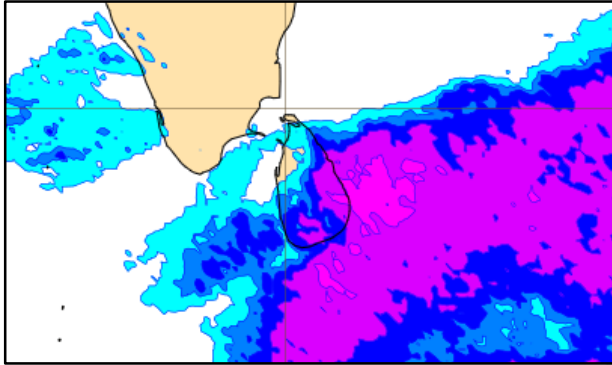
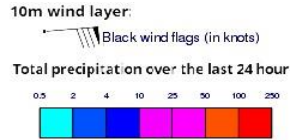
### Wind Gust (m/s)



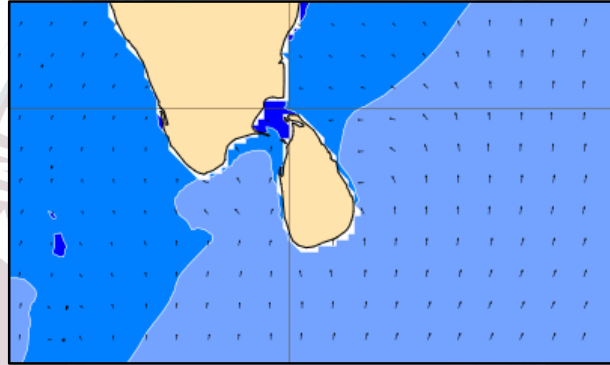
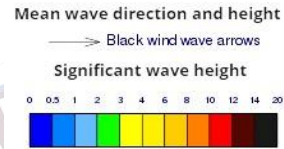
Showers or thunder showers may occur at few places in the sea areas extending from Trincomalee to Galle via Batticaloa. Mainly fair weather will prevail over the other sea areas around the island.

Wind speed will be (20-30) kmph. Wind speed will increase up to 40-45 kmph at times and the sea condition can be fairly rough at times in the sea areas extending from Colombo to Mannar via Puttalam and from Galle to Trincomalee via Batticaloa.

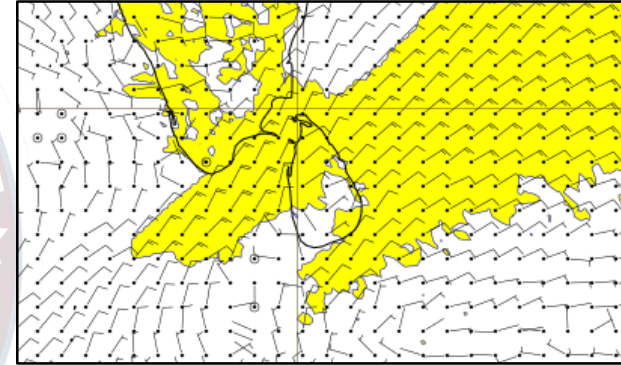
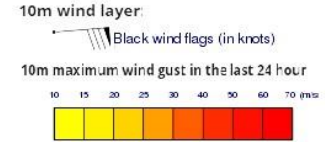
## Wind and Rainfall Forecast (Total precipitation for 24 hrs)



## Significant wave height (in meters)



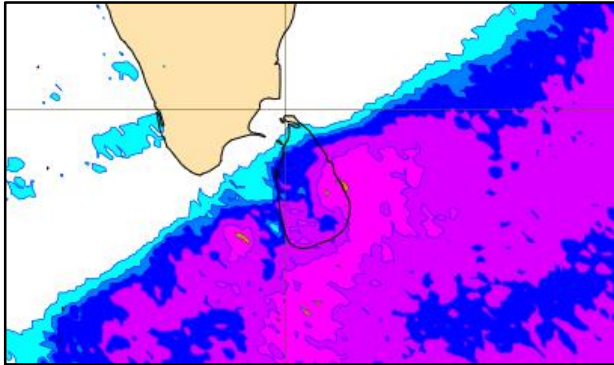
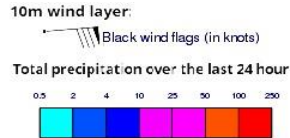
## Wind Gust (m/s)



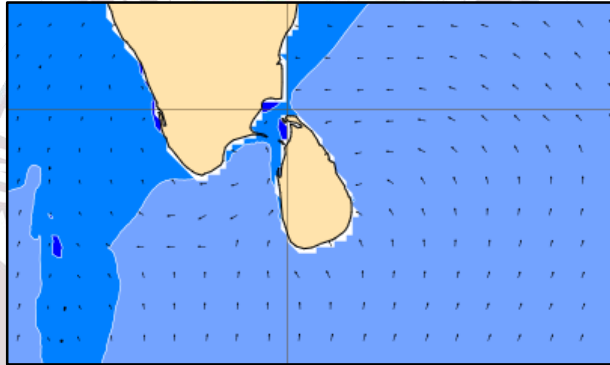
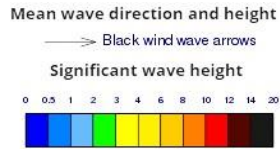
Showers or thunder showers may occur at several places in the sea areas extending from Trincomalee to Galle via Batticaloa. Showers or thunder showers may occur at a few places in the other sea areas around the island.

Wind speed will be (20-30) kmph. Wind speed will increase up to 40-45 kmph at times and the sea condition can be fairly rough at times in the sea areas around the island except the sea areas from Colombo to Galle via Kaluthara.

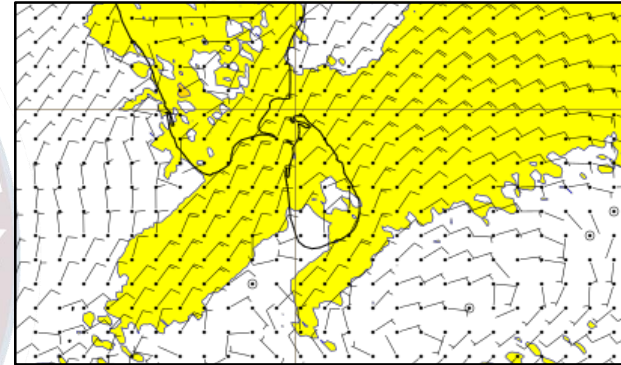
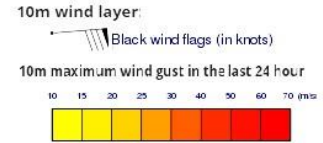
## Wind and Rainfall Forecast (Total precipitation for 24 hrs)



## Significant wave height (in meters)



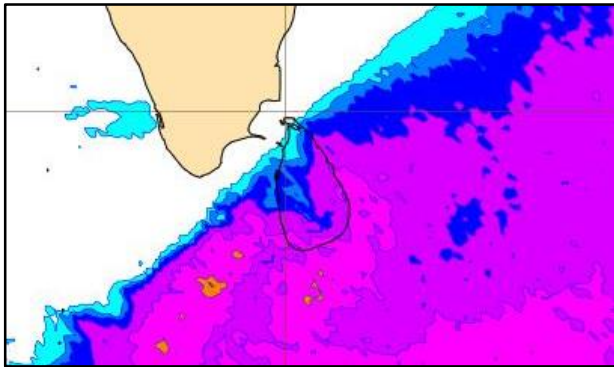
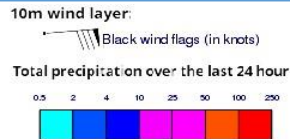
## Wind Gust (m/s)



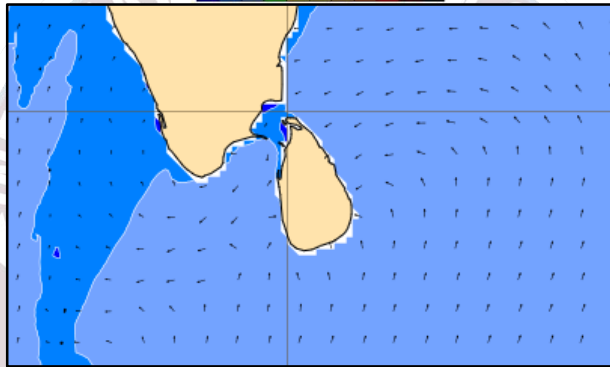
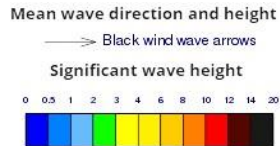
Showers or thunder showers may occur at several places in the sea areas extending from Trincomalee to Galle via Batticaloa. Showers or thunder showers may occur at a few places in the other sea areas around the island.

Wind speed will be (20-30) kmph. Wind speed will increase up to 40-45 kmph at times and the sea condition can be fairly rough at times in the sea areas around the island except the sea areas from Colombo to Galle via Kaluthara.

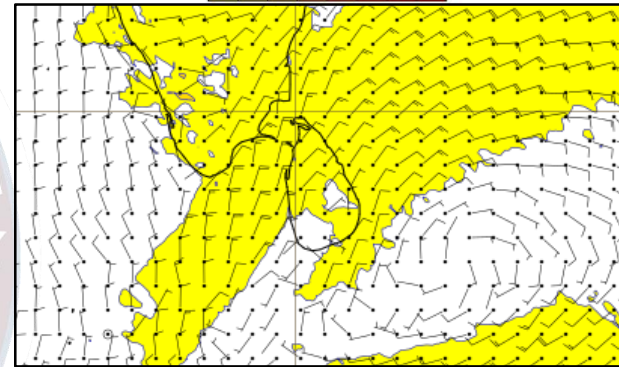
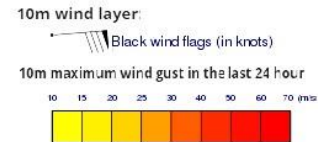
## Wind and Rainfall Forecast (Total precipitation for 24 hrs)



## Significant wave height (in meters)



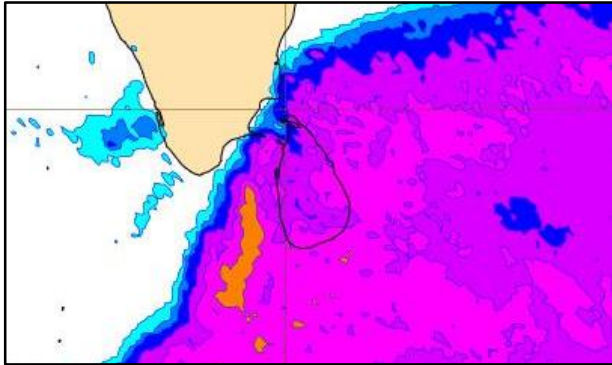
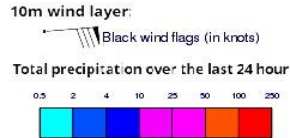
## Wind Gust (m/s)



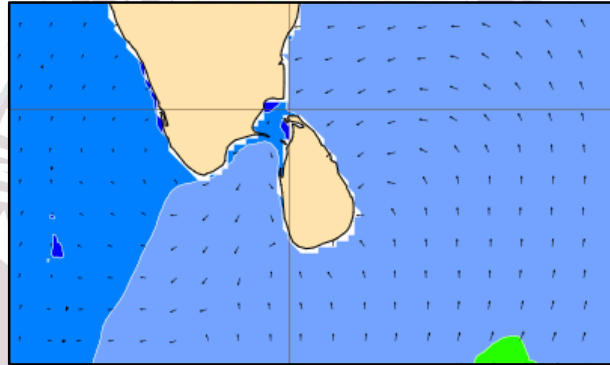
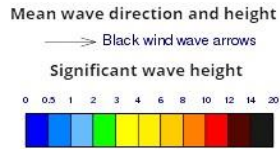
Showers or thunder showers may occur at several places in the sea areas extending from Trincomalee to Galle via Batticaloa. Showers or thunder showers may occur at a few places in the other sea areas around the island.

Wind speed will be (20-30) kmph. Wind speed will increase up to 40-45 kmph at times and the sea condition can be fairly rough at times in the sea areas around the island except the sea areas from Colombo to Galle via Kaluthara.

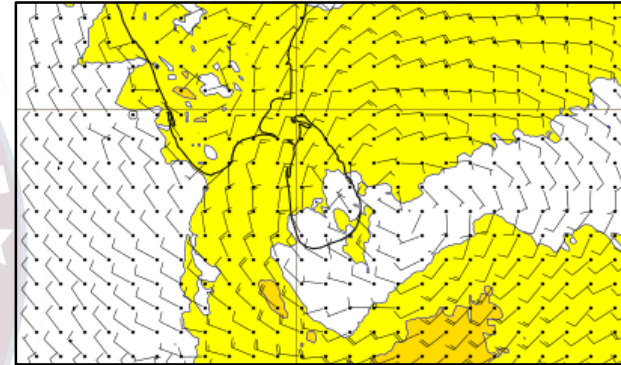
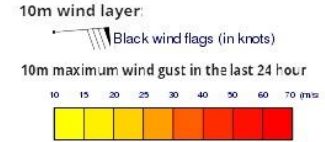
## Wind and Rainfall Forecast (Total precipitation for 24 hrs)



## Significant wave height (in meters)



## Wind Gust (m/s)



Showers or thunder showers may occur at several places in the other sea areas around the island.

Wind speed will be (20-30) kmph. Wind speed will increase up to 40-45 kmph at times and the sea condition can be fairly rough at times in the sea areas extending from Colombo to Batticaloa via Kankasanturi.

The logo is a circular emblem. The outer ring is dark blue with the text 'INFORMATION FUSION CENTRE' in white at the top and 'COLOMBO - SRI LANKA' in white at the bottom. The inner circle features a map of South and Central Asia in light blue, with the Indian Ocean to the south. A red and white circular seal is partially visible behind the map.

Thank you!