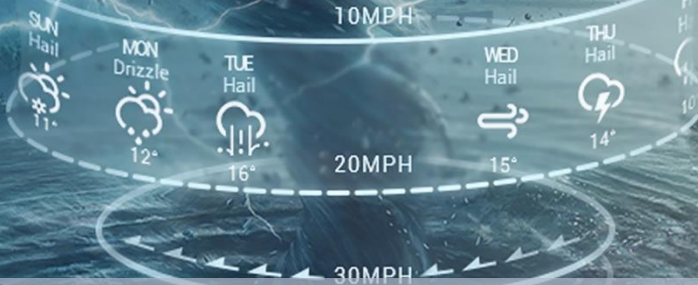


# 08 DAYS WEATHER FORECAST FOR COASTAL AREAS AROUND SRI LANKA


Storm Direction



WARNING

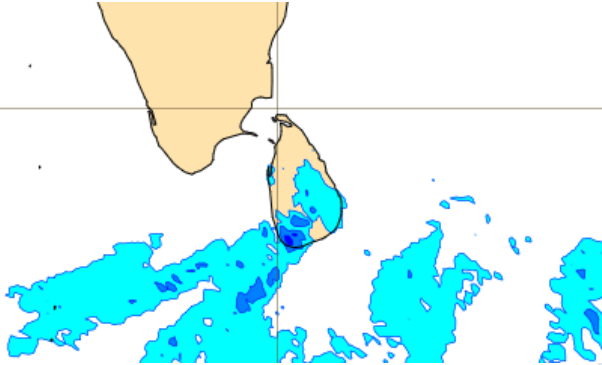
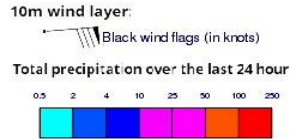


**INFORMATION FUSION CENTRE  
COLOMBO**

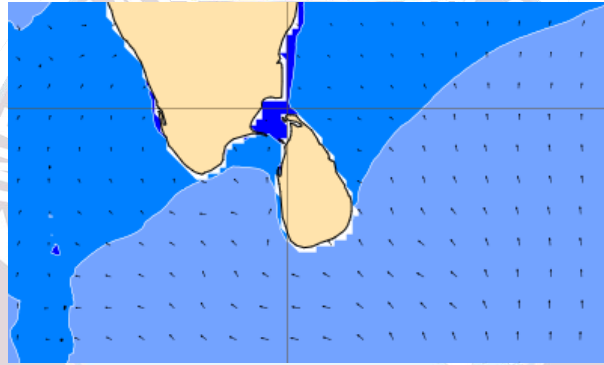
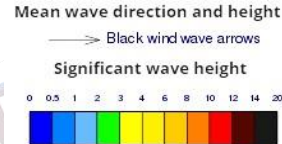


Issued at 0400 p.m. on 11<sup>th</sup> February 2025  
Marine Weather Division, National Meteorological Centre, Department of  
Meteorology, Sri Lanka

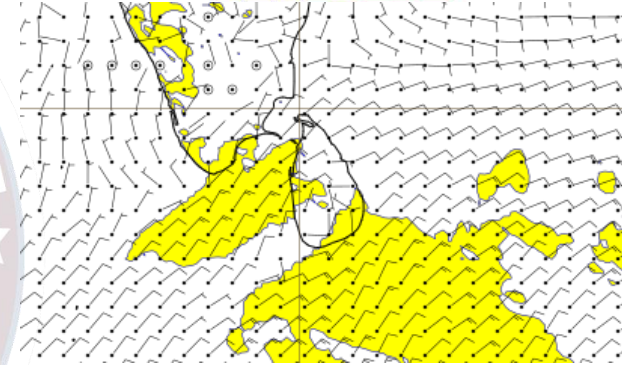
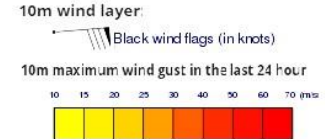
## Wind and Rainfall Forecast (Total precipitation for 24 hrs)



## Significant wave height (in meters)



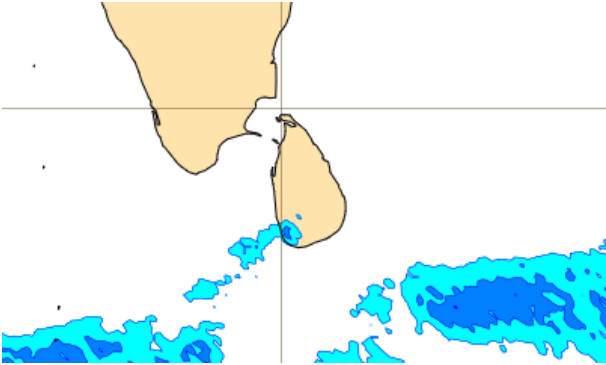
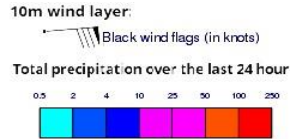
## Wind Gust (m/s)



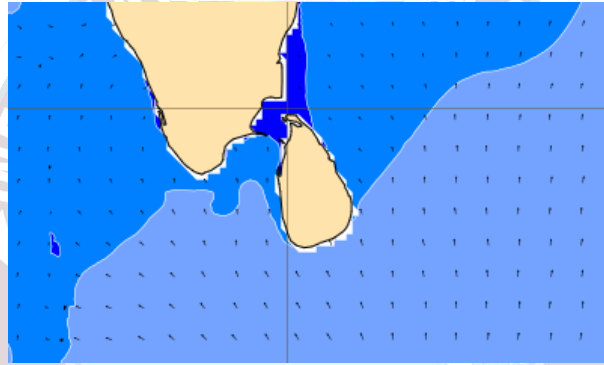
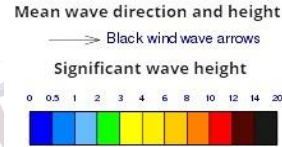
Mainly fair weather will prevail over the sea areas around the island.

Wind speed will be (20-30) kmph. Wind speed will increase up to 40-45 kmph at times and the sea condition can be fairly rough at times in the sea areas extending from Chilaw to Mannar via Puttalam and from Galle to Hambantota via Matara.

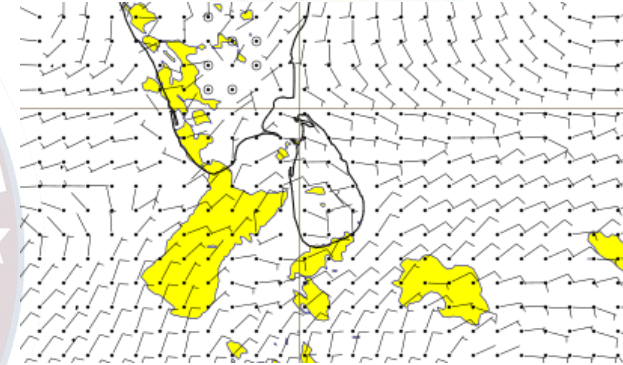
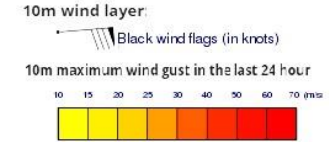
## Wind and Rainfall Forecast (Total precipitation for 24 hrs)



## Significant wave height (in meters)



## Wind Gust (m/s)

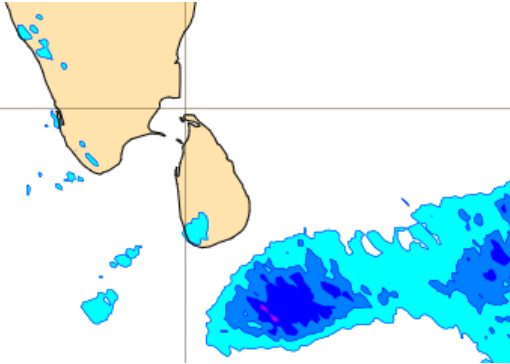
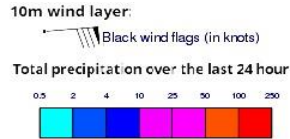


Mainly fair weather will prevail over the sea areas around the island.

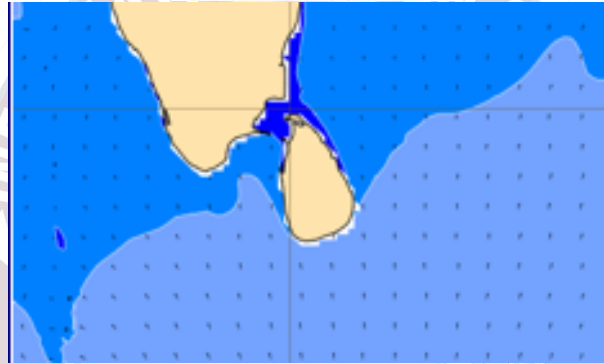
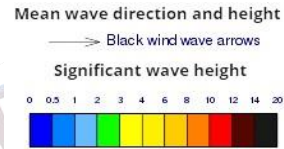
Wind speed will be (20-30) kmph. Wind speed will increase up to 40-45 kmph at times and the sea condition can be fairly rough at times in the sea areas extending from Galle to Hambantota via Matara.



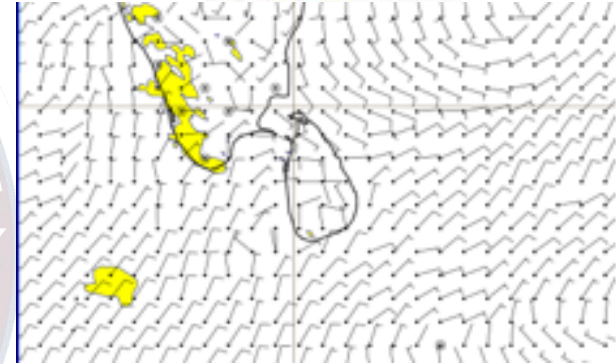
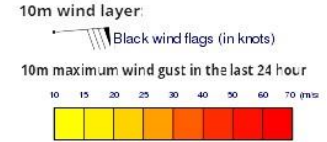
## Wind and Rainfall Forecast (Total precipitation for 24 hrs)



## Significant wave height (in meters)



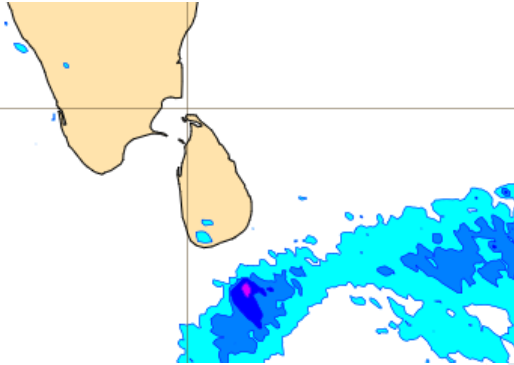
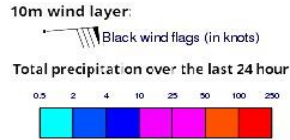
## Wind Gust (m/s)



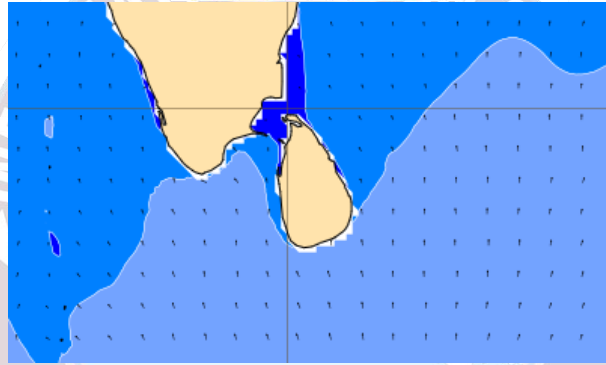
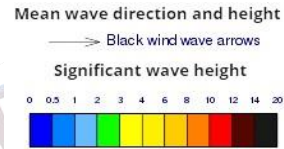
Mainly fair weather will prevail in the sea areas around the island.

Wind speed will be (20-30) kmph.

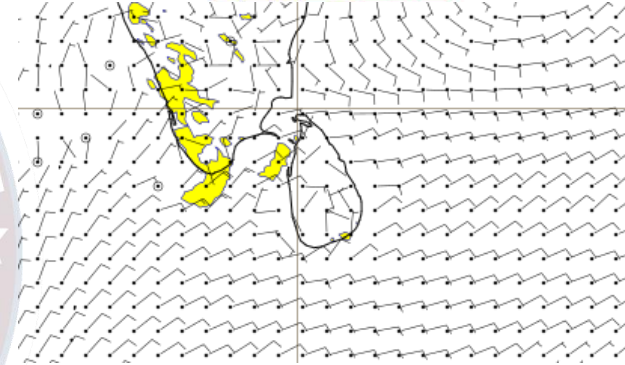
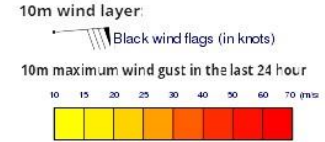
## Wind and Rainfall Forecast (Total precipitation for 24 hrs)



## Significant wave height (in meters)



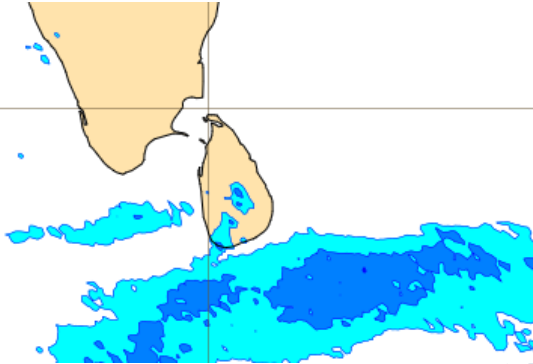
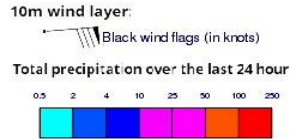
## Wind Gust (m/s)



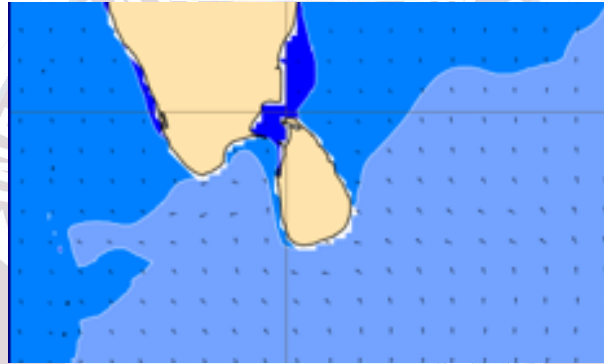
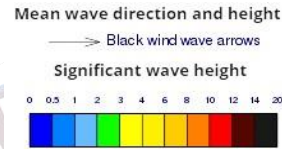
Mainly fair weather will prevail in the sea areas around the island.

Wind speed will be (20-30) kmph.

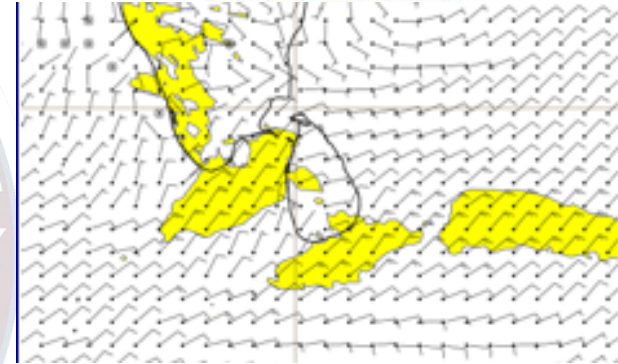
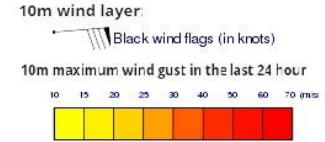
## Wind and Rainfall Forecast (Total precipitation for 24 hrs)



## Significant wave height (in meters)



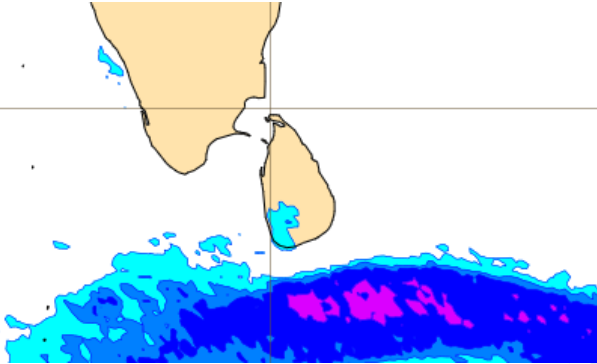
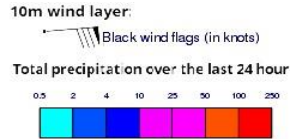
## Wind Gust (m/s)



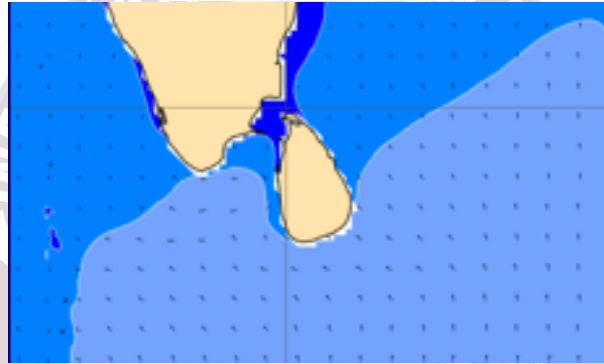
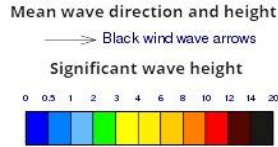
Mainly fair weather will prevail over the sea areas around the island.

Wind speed will be (20-30) kmph. Wind speed will increase up to 40-45 kmph at times and the sea condition can be fairly rough at times in the sea areas extending from Chilaw to Mannar via Puttalam and from Galle to Hambantota via Matara.

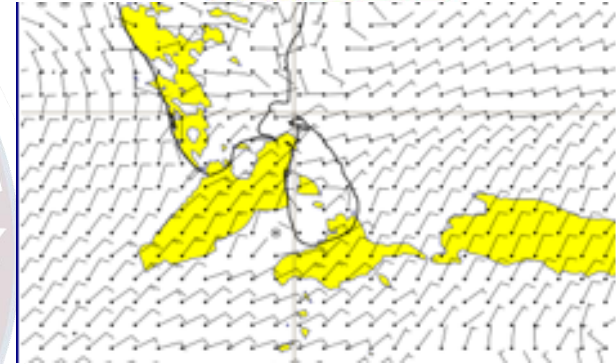
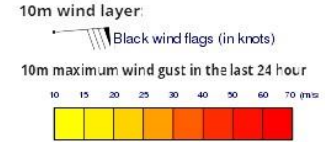
## Wind and Rainfall Forecast (Total precipitation for 24 hrs)



## Significant wave height (in meters)



## Wind Gust (m/s)

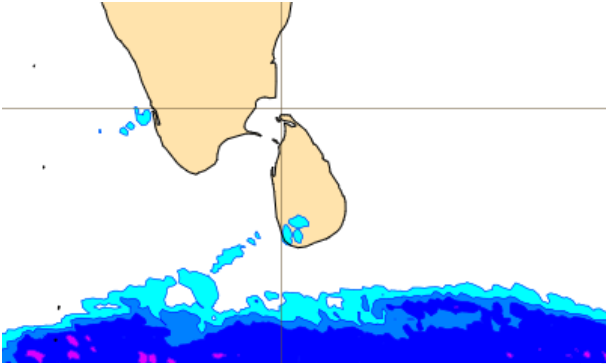
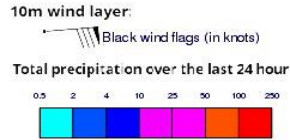


Mainly fair weather will prevail over the sea areas around the island.

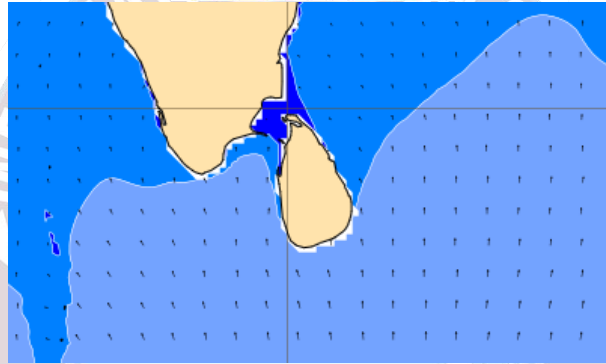
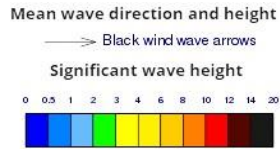
Wind speed will be (20-30) kmph. Wind speed will increase up to (40-45) kmph at times and the sea condition can be fairly rough at times in the sea areas extending from Colombo to Mannar via Puttalam and from Galle to Hambantota via Matara.



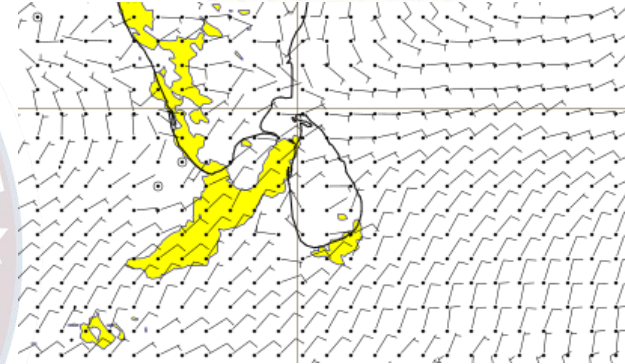
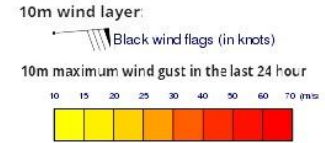
### Wind and Rainfall Forecast (Total precipitation for 24 hrs)



### Significant wave height (in meters)



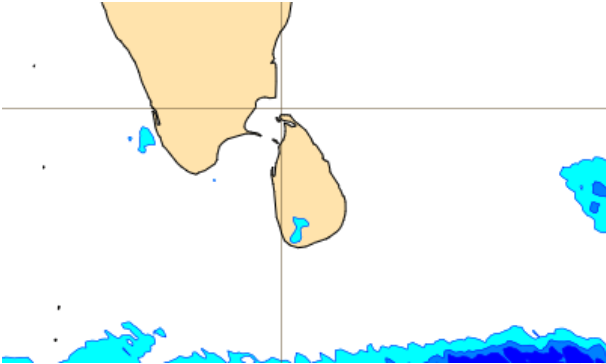
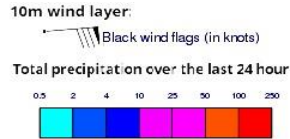
### Wind Gust (m/s)



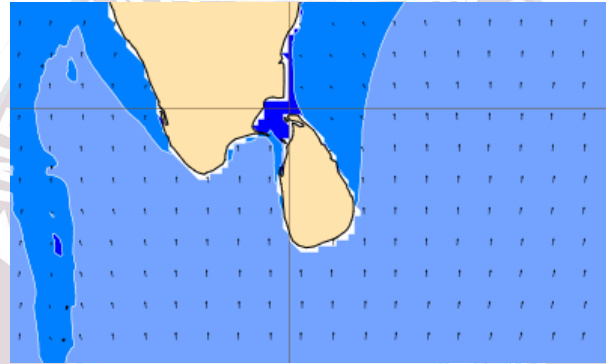
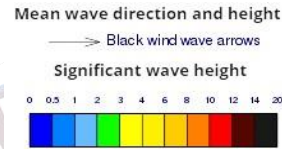
Mainly fair weather will prevail over the sea areas around the island.

Wind speed will be (20-30) kmph. Wind speed will increase up to (40-45) kmph at times and the sea condition can be fairly rough at times in the sea areas extending from Puttalam to Mannar and from Galle to Hambantota via Matara.

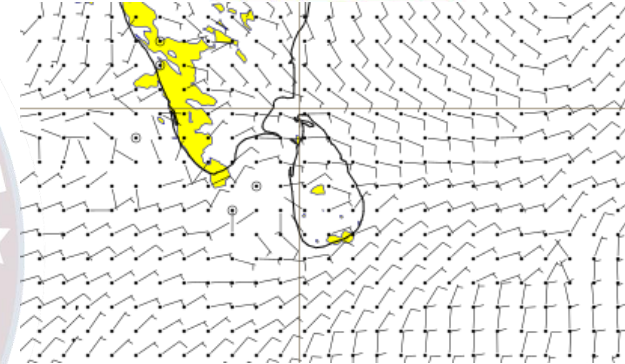
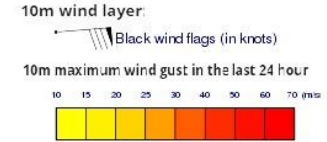
## Wind and Rainfall Forecast (Total precipitation for 24 hrs)



## Significant wave height (in meters)



## Wind Gust (m/s)



Mainly fair weather will prevail in the sea areas around the island.

Wind speed will be (25-35) kmph.

The logo is a circular emblem. The outer ring is dark blue with the text 'INFORMATION FUSION CENTRE' in white at the top and 'COLOMBO - SRI LANKA' in white at the bottom. The inner circle features a map of South Asia, with India, Sri Lanka, and the surrounding Indian Ocean depicted in light blue and white. A red and white circular seal is visible behind the map.

Thank you!