

08 DAYS WEATHER FORECAST FOR COASTAL AREAS AROUND SRI LANKA


Storm Direction



WARNING

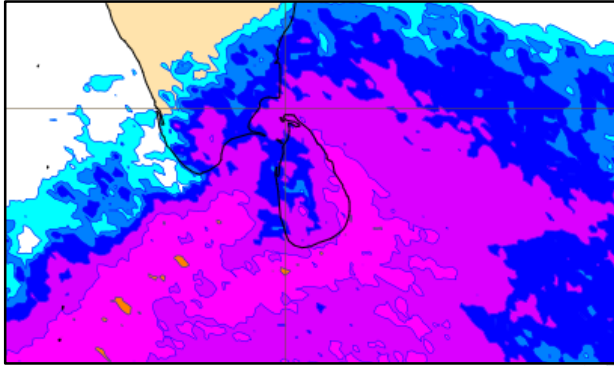
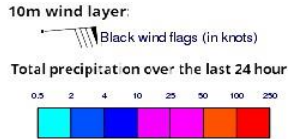


**INFORMATION FUSION CENTRE
COLOMBO**

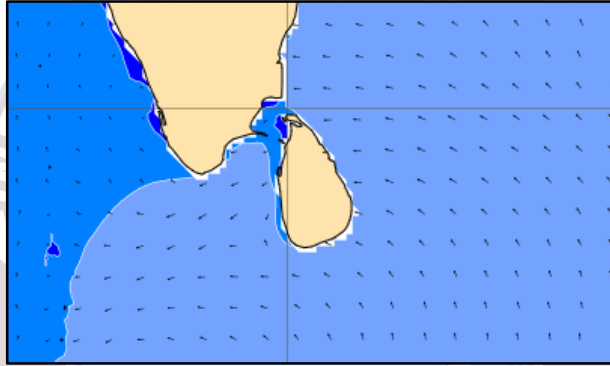
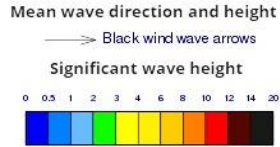


Issued at 0400 p.m. on 27th February 2025
Marine Weather Division, National Meteorological Centre, Department of
Meteorology, Sri Lanka

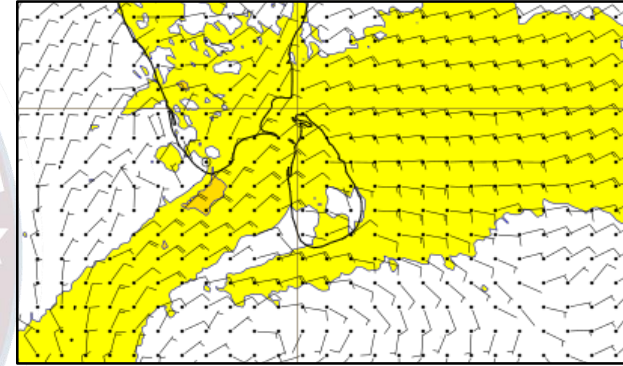
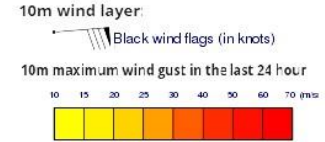
Wind and Rainfall Forecast (Total precipitation for 24 hrs)



Significant wave height (in meters)



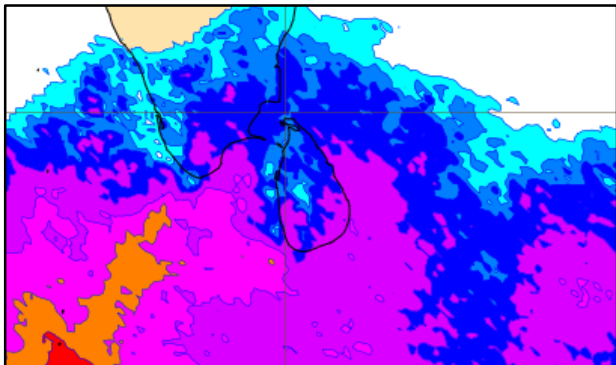
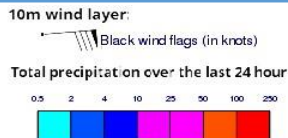
Wind Gust (m/s)



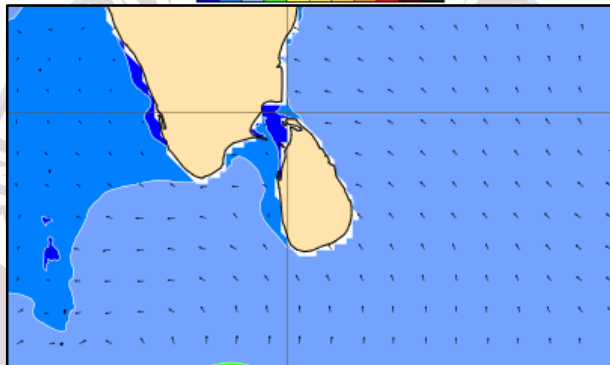
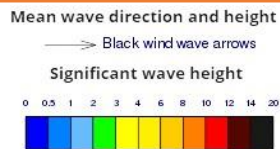
Showers or thunder showers may occur at several places in the sea areas around the island.

Wind speed will be (30-40) kmph. Wind speed will increase up to **45-50** kmph at times and the sea condition can be fairly rough at times in the sea areas around the island except the sea areas from Colombo to Galle via Kaluthara.

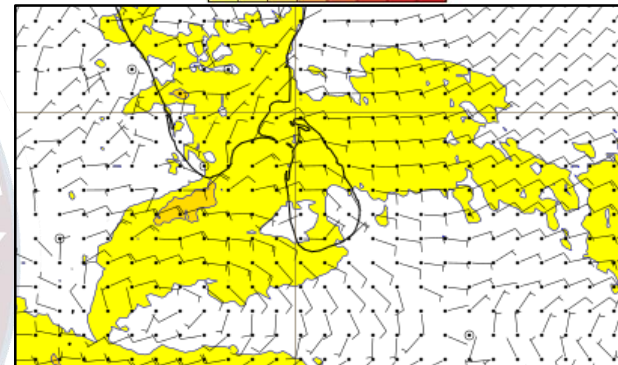
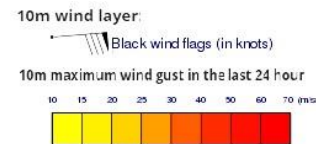
Wind and Rainfall Forecast (Total precipitation for 24 hrs)



Significant wave height (in meters)



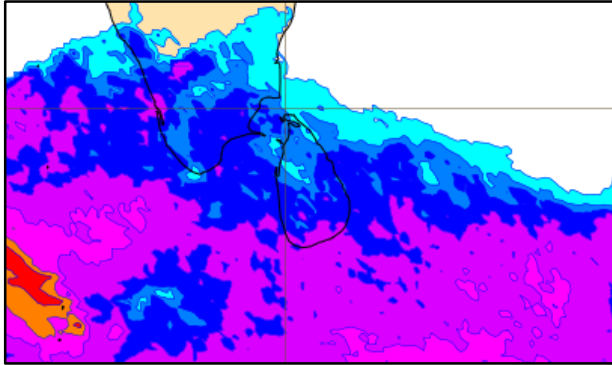
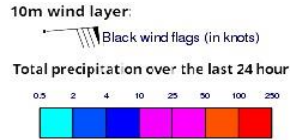
Wind Gust (m/s)



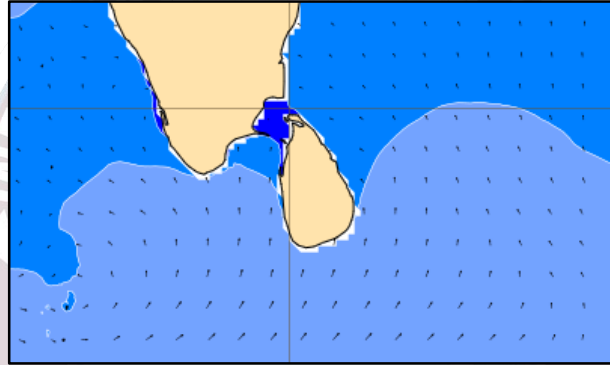
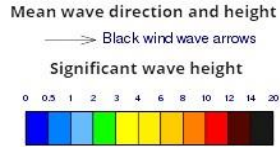
Showers or thunder showers may occur at several places in the sea areas around the island.

Wind speed will be (30-40) kmph. Wind speed will increase up to **45-50** kmph at times and the sea condition can be fairly rough at times in the sea areas around the island except the sea areas from Hambantota to Pottuvil.

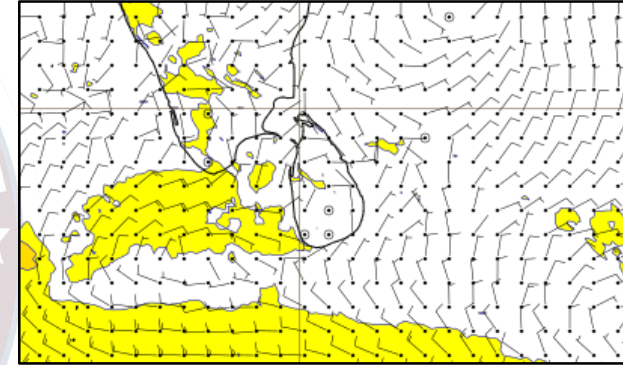
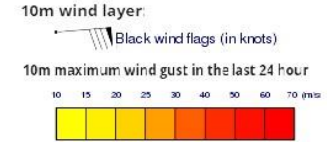
Wind and Rainfall Forecast (Total precipitation for 24 hrs)



Significant wave height (in meters)



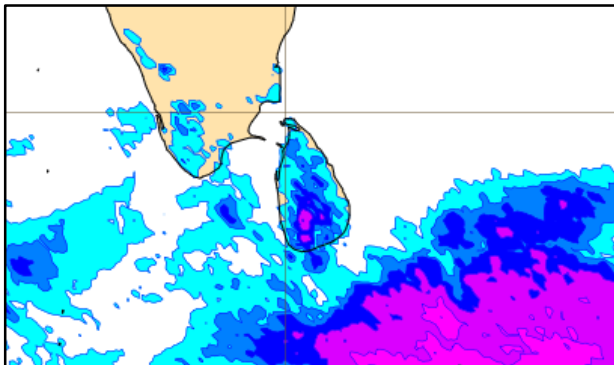
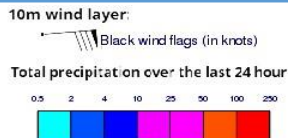
Wind Gust (m/s)



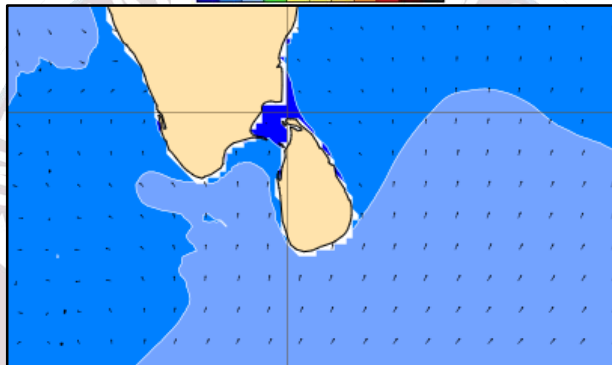
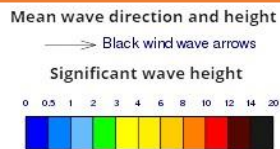
Showers or thunder showers may occur at several places in the sea areas around the island.

Wind speed will be (30-40) kmph. Wind speed will increase up to **45-50** kmph at times and the sea condition can be fairly rough at times in the sea areas from Colombo to Galle via Kaluthara.

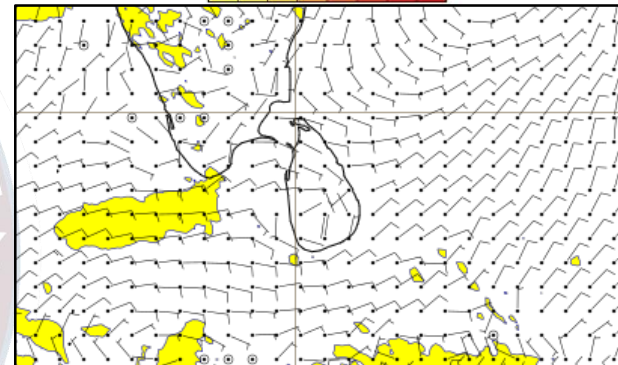
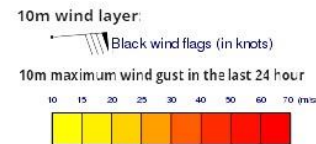
Wind and Rainfall Forecast (Total precipitation for 24 hrs)



Significant wave height (in meters)



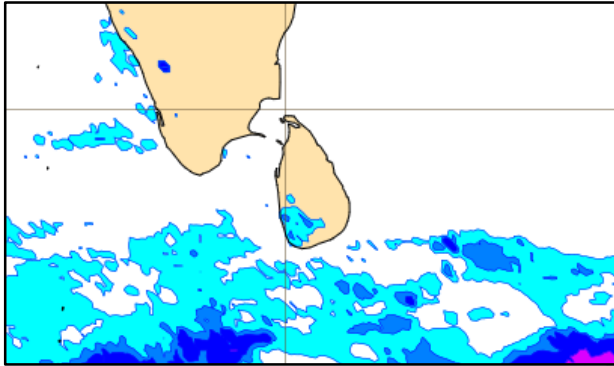
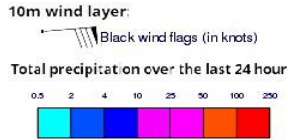
Wind Gust (m/s)



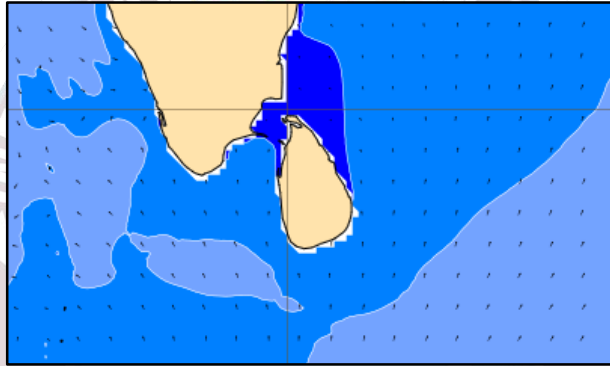
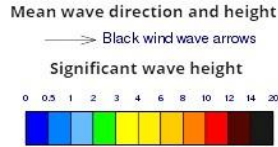
Mainly fair weather will prevail over the sea areas around the island.

Wind speed will be (20-30) kmph.

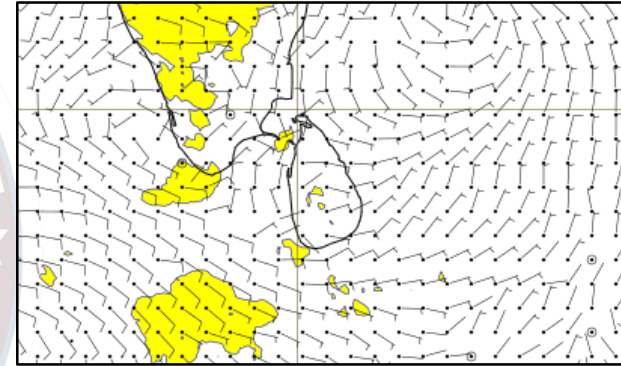
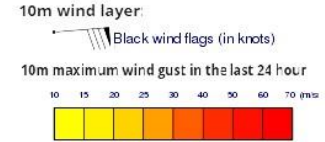
Wind and Rainfall Forecast (Total precipitation for 24 hrs)



Significant wave height (in meters)



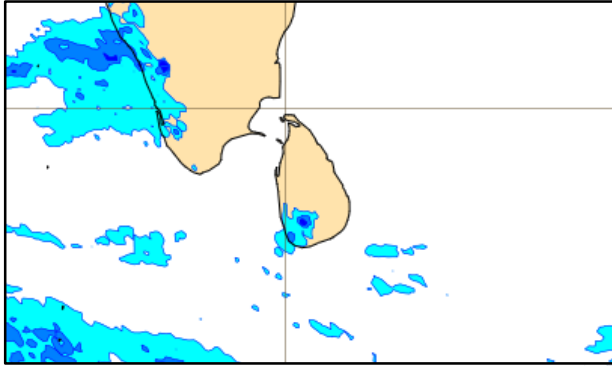
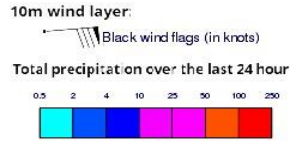
Wind Gust (m/s)



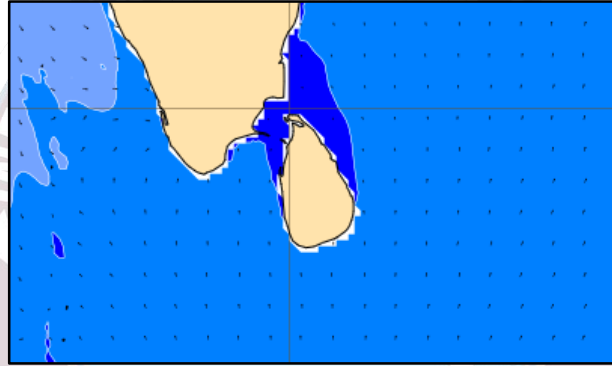
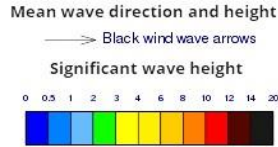
Mainly fair weather will prevail over the sea areas around the island.

Wind speed will be (20-30) kmph

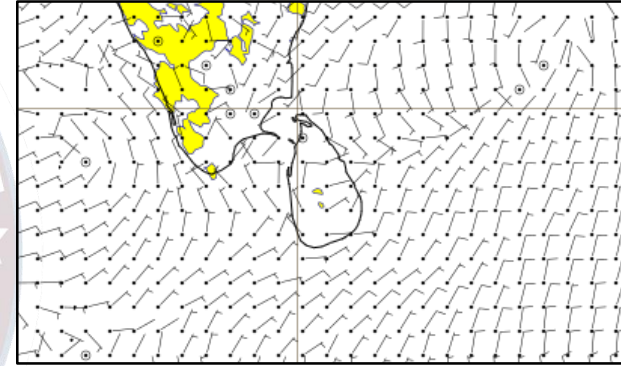
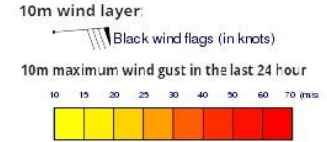
Wind and Rainfall Forecast (Total precipitation for 24 hrs)



Significant wave height (in meters)



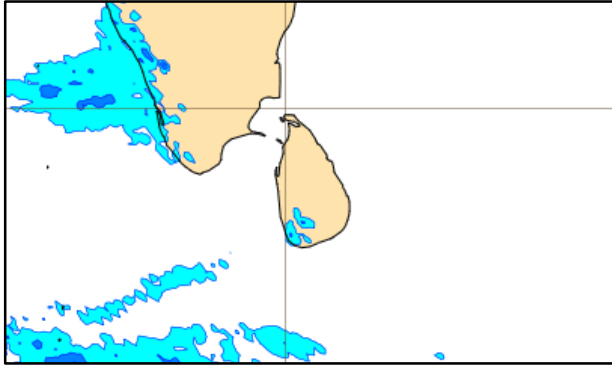
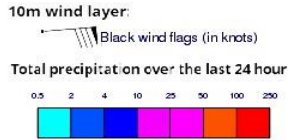
Wind Gust (m/s)



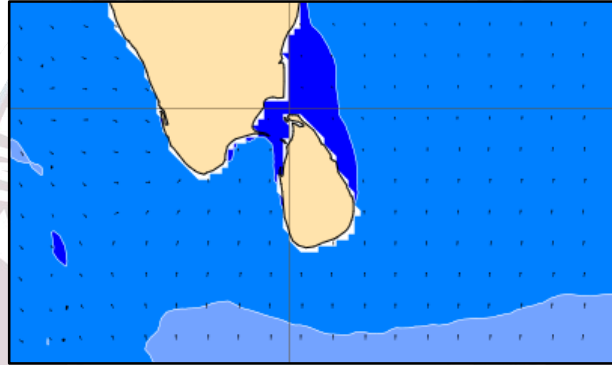
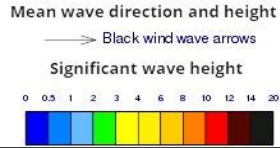
Mainly fair weather will prevail over the sea areas around the island.

Wind speed will be (20-30) kmph

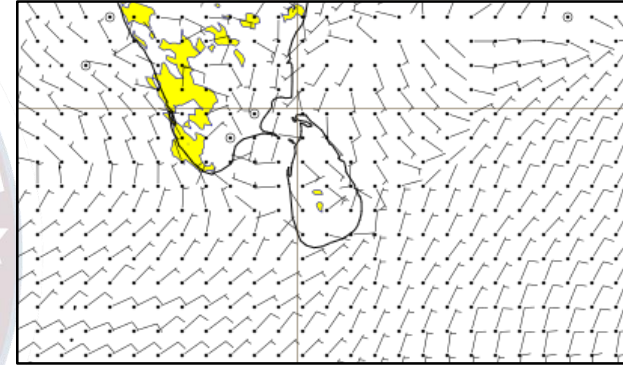
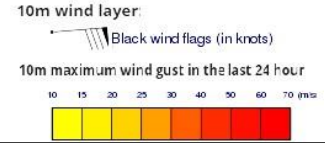
Wind and Rainfall Forecast (Total precipitation for 24 hrs)



Significant wave height (in meters)



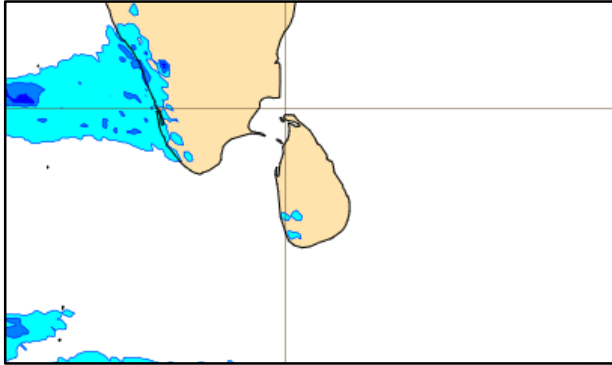
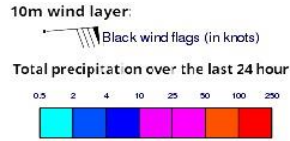
Wind Gust (m/s)



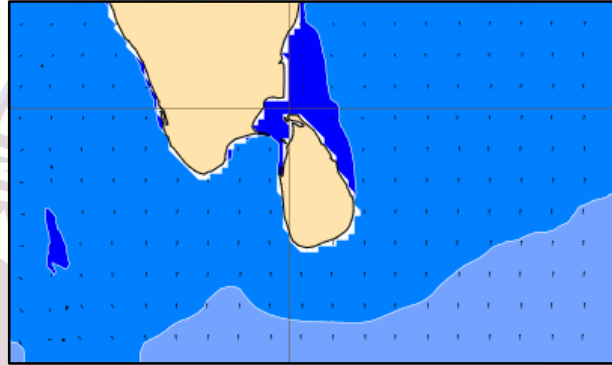
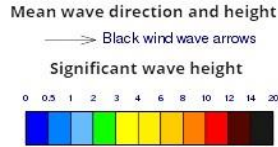
Mainly fair weather will prevail over the sea areas around the island.

Wind speed will be (20-30) kmph

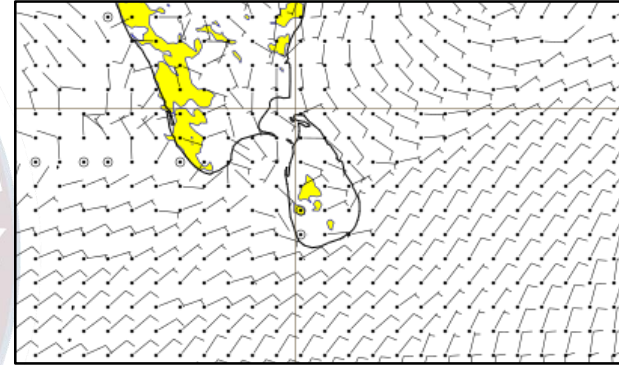
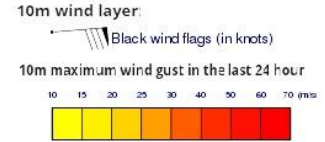
Wind and Rainfall Forecast (Total precipitation for 24 hrs)



Significant wave height (in meters)



Wind Gust (m/s)



Mainly fair weather will prevail over the sea areas around the island.

Wind speed will be (20-30) kmph.



Thank you!