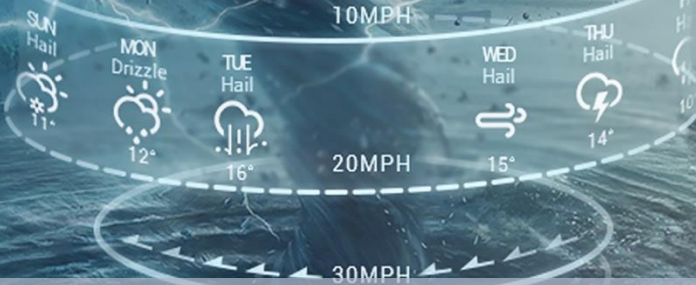


08 DAYS WEATHER FORECAST FOR COASTAL AREAS AROUND SRI LANKA


Storm Direction



WARNING

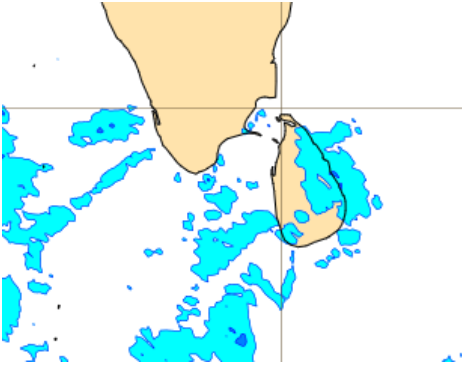
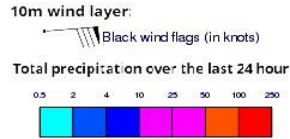


**INFORMATION FUSION CENTRE
COLOMBO**

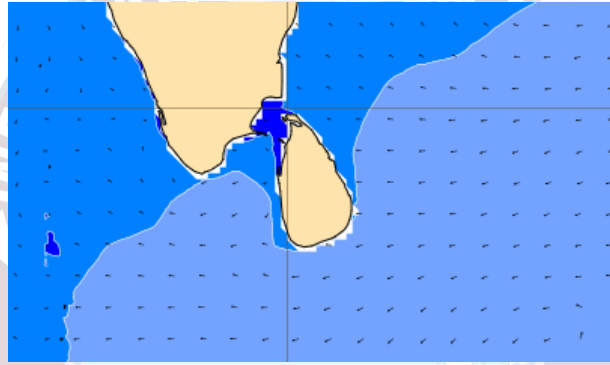
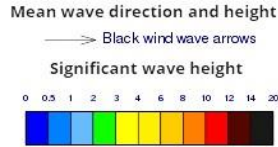


Issued at 0400 p.m. on 03rd February 2025
Marine Weather Division, National Meteorological Centre, Department of
Meteorology, Sri Lanka

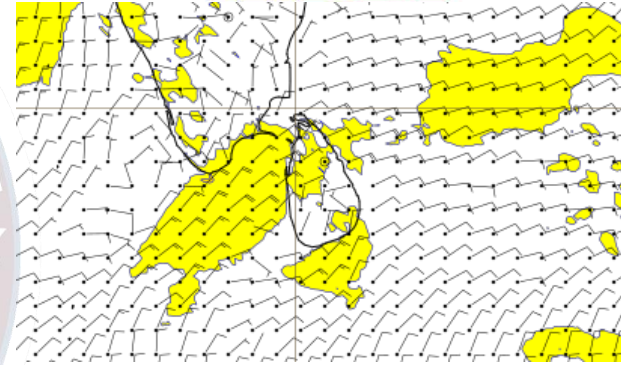
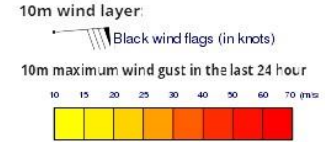
Wind and Rainfall Forecast (Total precipitation for 24 hrs)



Significant wave height (in meters)



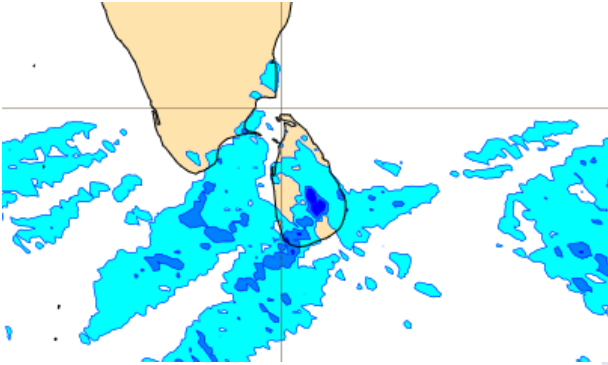
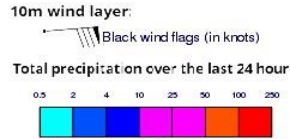
Wind Gust (m/s)



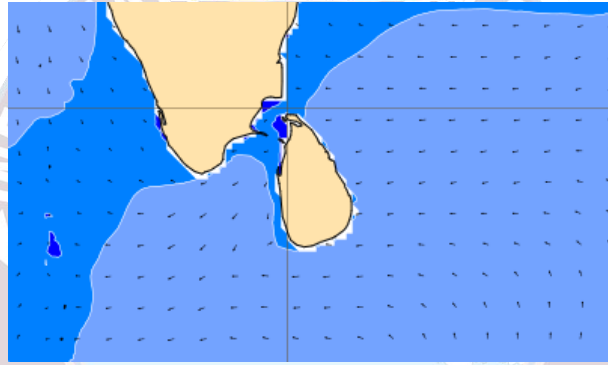
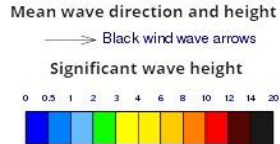
Mainly fair weather will prevail over the sea areas around the island.

Wind speed will be (25-35) kmph. Wind speed will increase up to (45-50) kmph at times and the sea condition can be fairly rough at times in the sea areas extending from Colombo to Mannar via Puttalam and from Matara to Pottuvil via Hambantota.

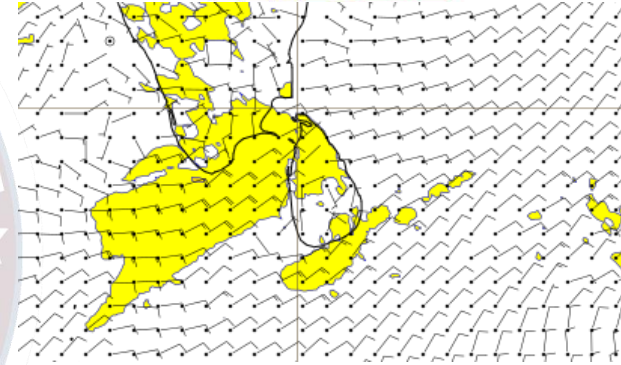
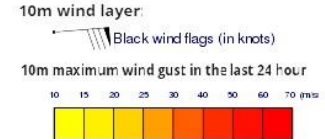
Wind and Rainfall Forecast (Total precipitation for 24 hrs)



Significant wave height (in meters)



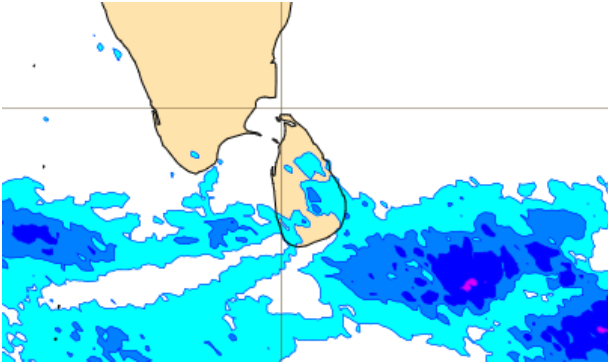
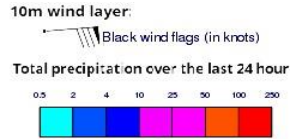
Wind Gust (m/s)



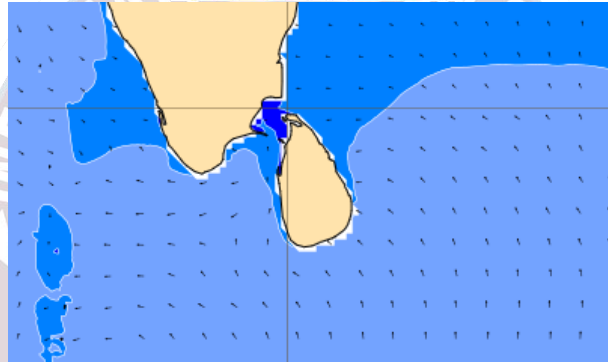
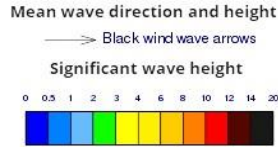
Showers or thundershowers may occur at a few places in the sea areas off the coast extending from Kaluthara to Matara via Galle. Mainly fair weather will prevail in the other sea areas around the island.

Wind speed will be (25-35) kmph. Wind speed will increase up to (45-50) kmph at times and the sea condition can be fairly rough at times in the sea areas extending from Colombo to Kankasanthurai via Puttalam and Mannar and from Matara to Pottuvil via Hambantota.

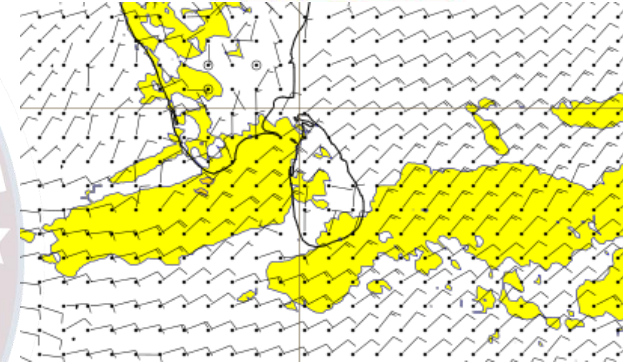
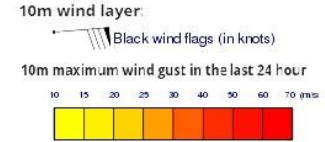
Wind and Rainfall Forecast (Total precipitation for 24 hrs)



Significant wave height (in meters)



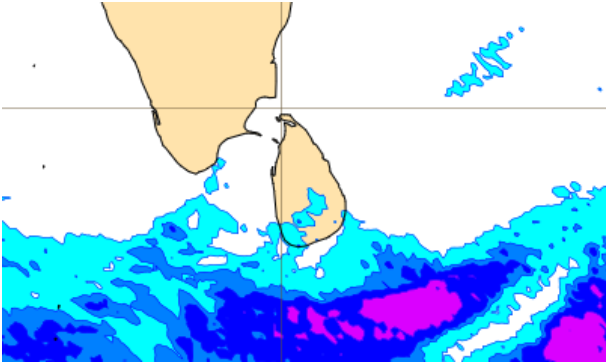
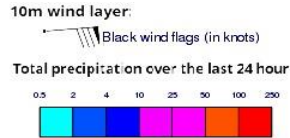
Wind Gust (m/s)



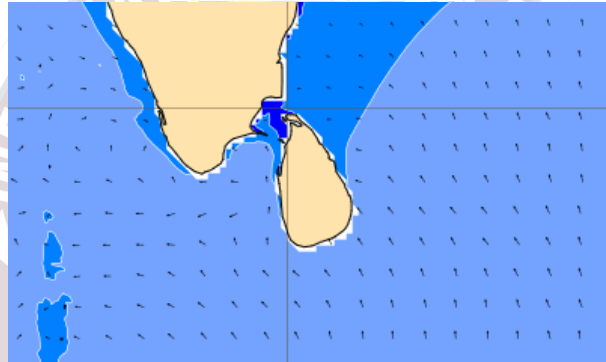
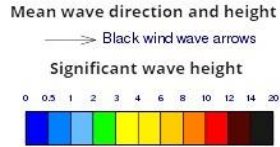
Mainly fair weather will prevail over the sea areas around the island.

Wind speed will be (25-35) kmph. Wind speed will increase up to (45-50) kmph at times and the sea condition can be fairly rough at times in the sea areas extending from Colombo to Kankasanthurai via Puttalam and Mannar and from Galle to Pottuvil via Hambantota.

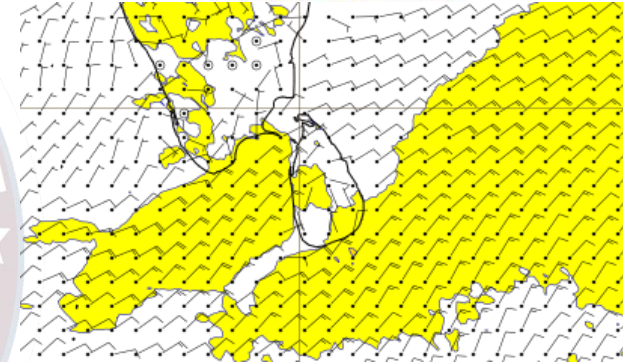
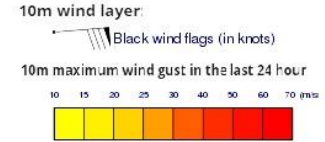
Wind and Rainfall Forecast (Total precipitation for 24 hrs)



Significant wave height (in meters)



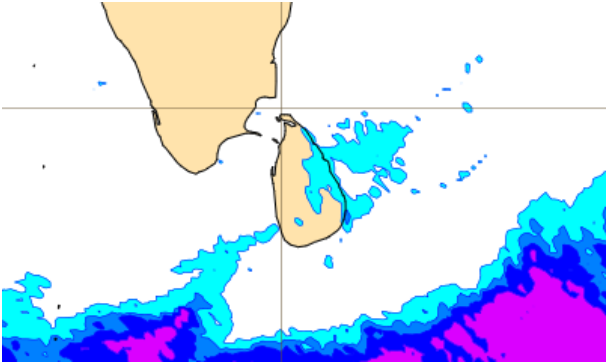
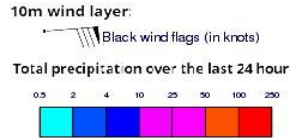
Wind Gust (m/s)



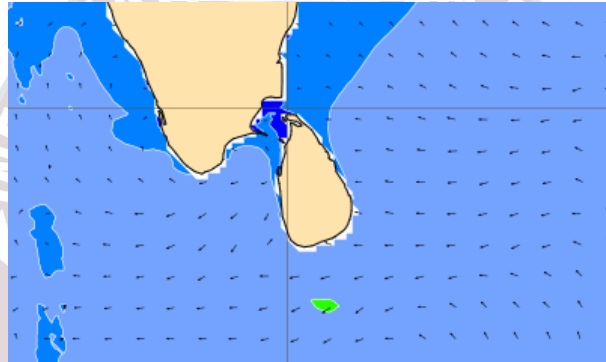
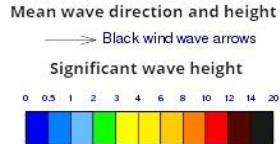
Mainly fair weather will prevail over the sea areas around the island.

Wind speed will be (30-40) kmph. Wind speed will increase up to (50-55) kmph at times and the sea condition can be fairly rough to rough at times in the sea areas extending from Colombo to Mannar via Puttalam and from Matara to Batticaloa via Hambantota and Pottuvil.

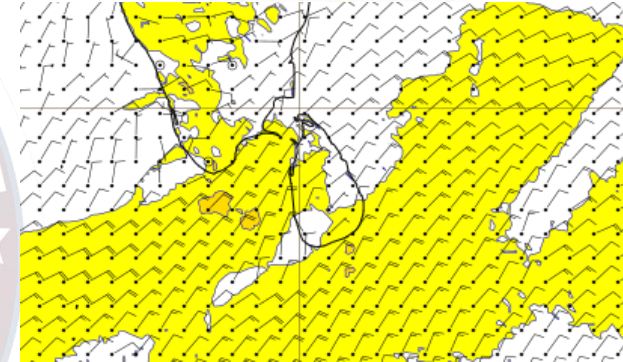
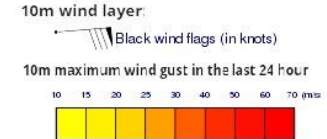
Wind and Rainfall Forecast (Total precipitation for 24 hrs)



Significant wave height (in meters)



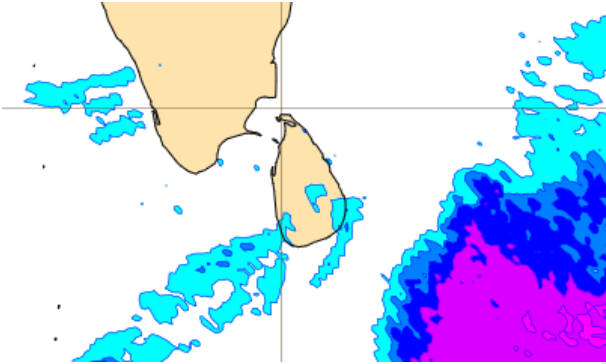
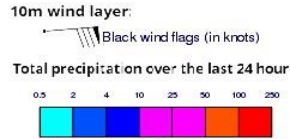
Wind Gust (m/s)



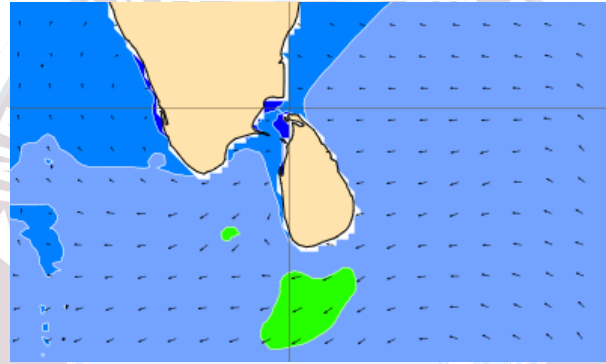
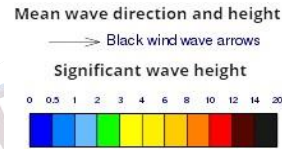
Mainly fair weather will prevail over the sea areas around the island.

Wind speed will be (30-40) kmph. Wind speed will increase up to (50-55) kmph at times and the sea condition can be fairly rough to rough at times in the sea areas extending from Colombo to Kankasanthurai via Puttalam and Mannar and from Matara to Batticaloa via Hambantota and Pottuvil.

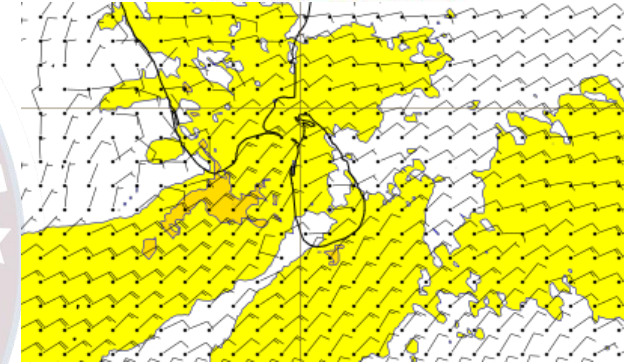
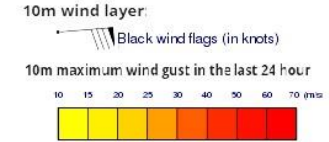
Wind and Rainfall Forecast (Total precipitation for 24 hrs)



Significant wave height (in meters)



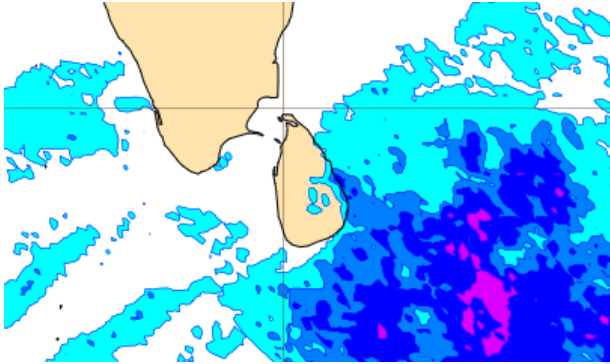
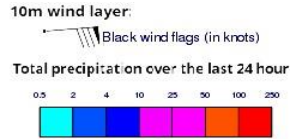
Wind Gust (m/s)



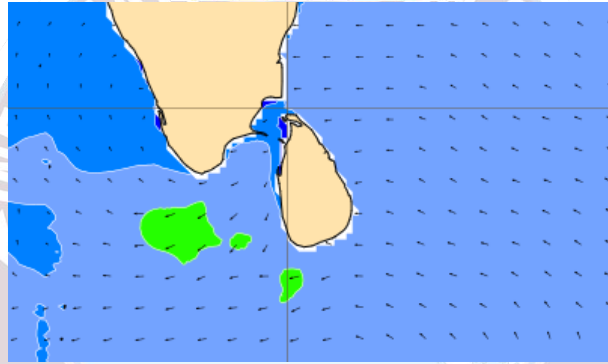
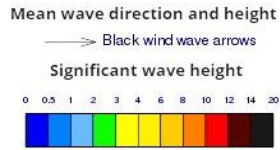
Mainly fair weather will prevail over the sea areas around the island.

Wind speed will be (30-40) kmph. Wind speed will increase up to (50-55) kmph at times and the sea condition can be fairly rough to rough at times in the sea areas extending from Colombo to Kankasanthurai via Puttalam and Mannar and from Matara to Batticaloa via Hambantota and Pottuvil.

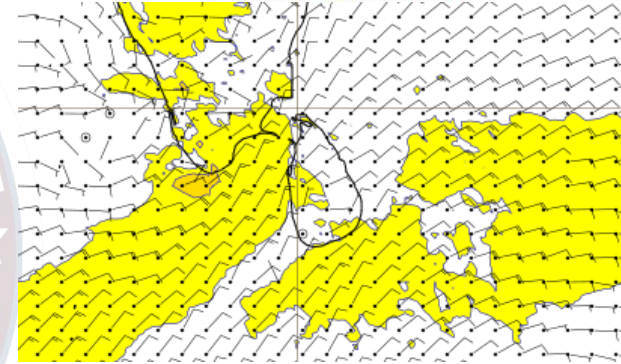
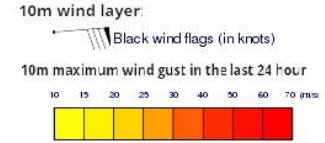
Wind and Rainfall Forecast (Total precipitation for 24 hrs)



Significant wave height (in meters)



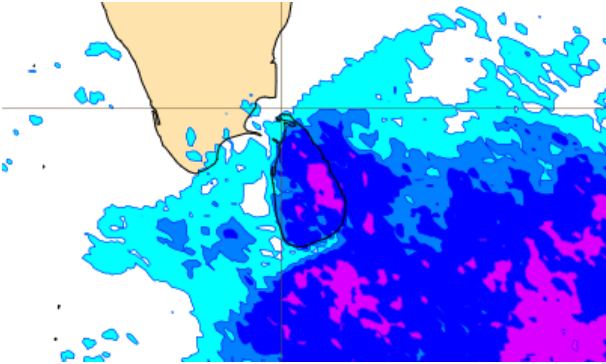
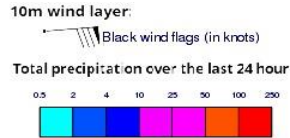
Wind Gust (m/s)



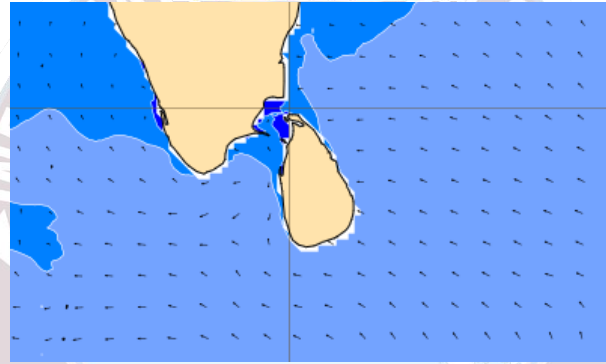
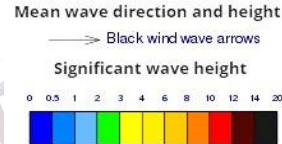
Showers or thundershowers will occur at several places in the sea areas extending from Batticaloa to Hambantota. Mainly fair weather will prevail in the other sea areas around the island.

Wind speed will be (30-40) kmph. Wind speed will increase up to (50-55) kmph at times and the sea condition can be fairly rough to rough at times in the sea areas extending from Colombo to Kankasanthurai via Puttalam and Mannar and from Matara to Pottuvil via Hambantota.

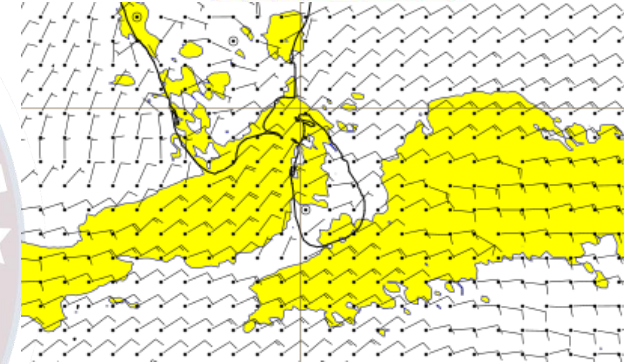
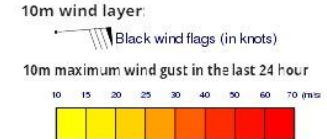
Wind and Rainfall Forecast (Total precipitation for 24 hrs)



Significant wave height (in meters)



Wind Gust (m/s)



Showers or thundershowers will occur at several places in the sea areas extending from Mullaitivu to Hambnathota via Trincomalee and Pottuvil. Showers or thundershowers may occur at a few places in the other sea areas around the island.

Wind speed will be (25-35) kmph. Wind speed will increase up to (45-50) kmph at times and the sea condition can be fairly rough at times in the sea areas extending from Colombo to Kankasanthurai via Puttalam and Mannar and from Matara to Pottuvil via Hambantota.



Thank you!