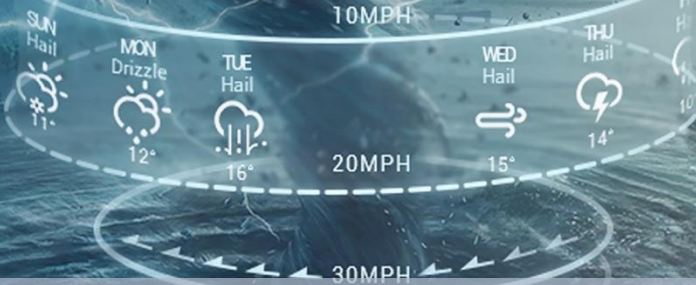


08 DAYS WEATHER FORECAST FOR COASTAL AREAS AROUND SRI LANKA

Storm Direction




WARNING



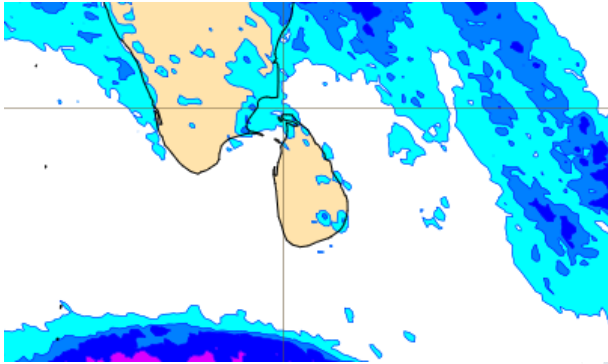
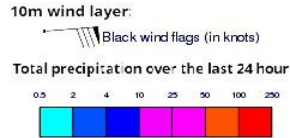
**INFORMATION FUSION CENTRE
COLOMBO**

Know weather before it comes

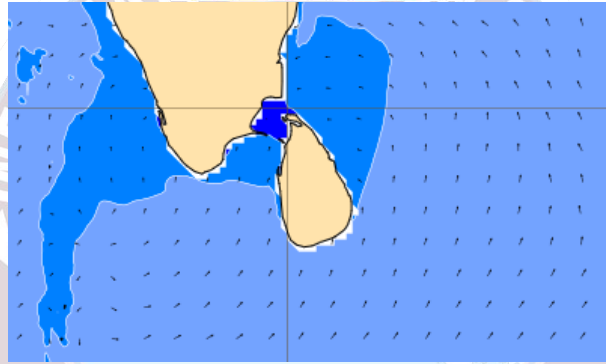
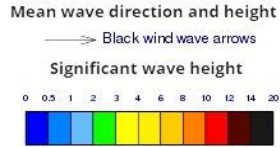


Issued at 0400 p.m. on 25th December 2024
Marine Weather Division, National Meteorological Centre, Department of
Meteorology, Sri Lanka

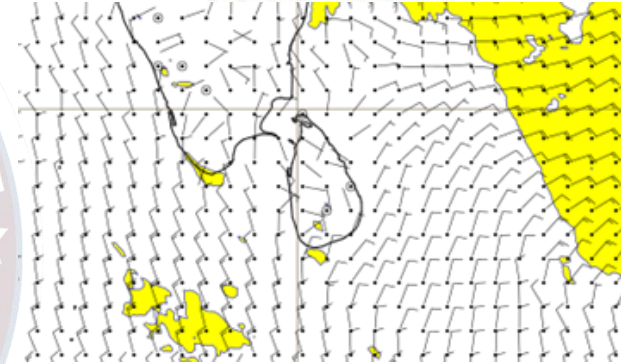
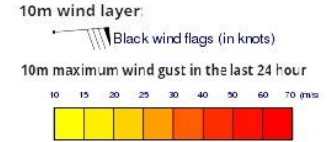
Wind and Rainfall Forecast (Total precipitation for 24 hrs)



Significant wave height (in meters)

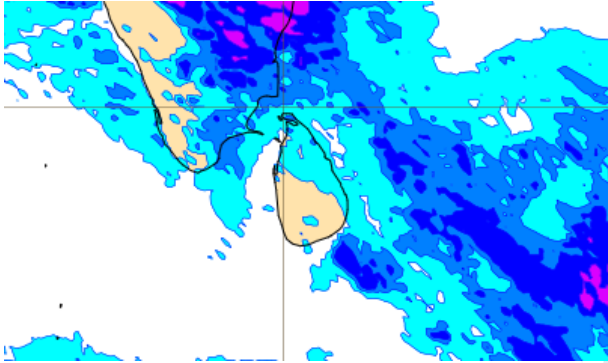
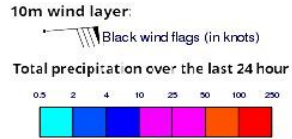


Wind Gust (m/s)

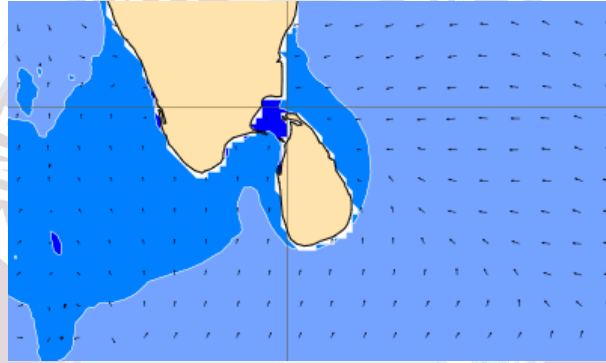
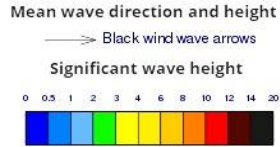


Mainly fair weather will prevail over sea areas around the island.
Wind speed will be (20-30) kmph in the sea areas around the island.

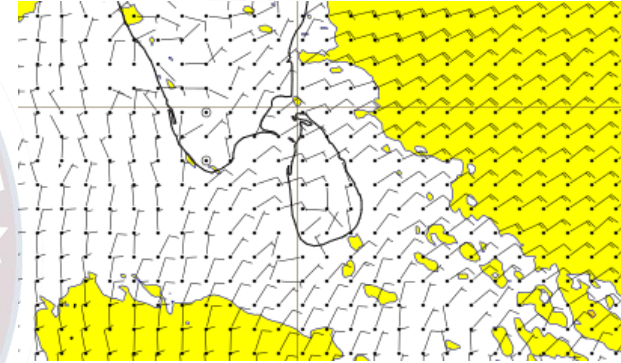
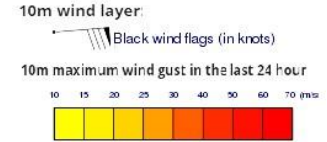
Wind and Rainfall Forecast (Total precipitation for 24 hrs)



Significant wave height (in meters)



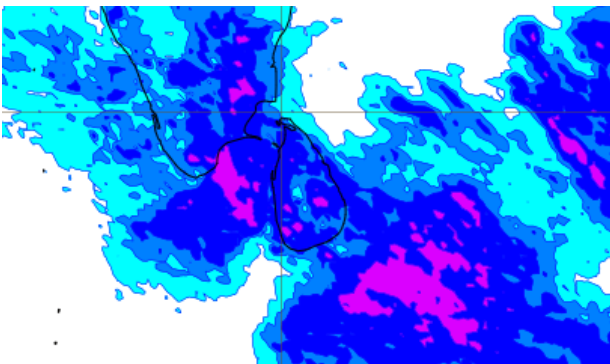
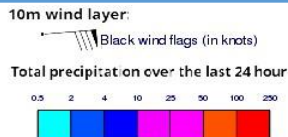
Wind Gust (m/s)



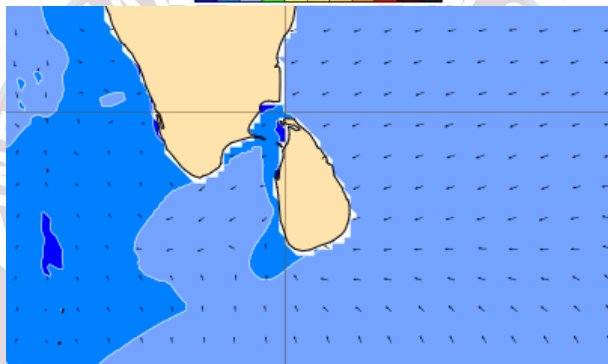
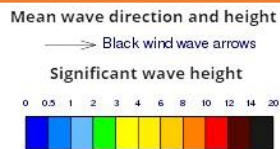
Mainly fair weather will prevail over sea areas around the island.

Wind speed will be (20-30) kmph in the sea areas around the island.

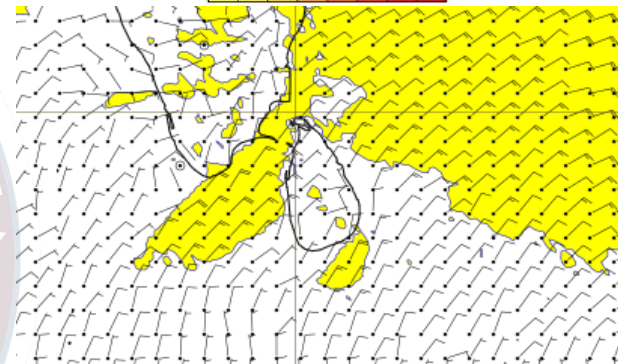
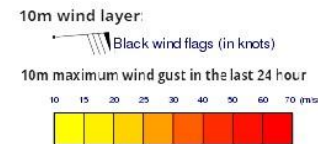
Wind and Rainfall Forecast (Total precipitation for 24 hrs)



Significant wave height (in meters)



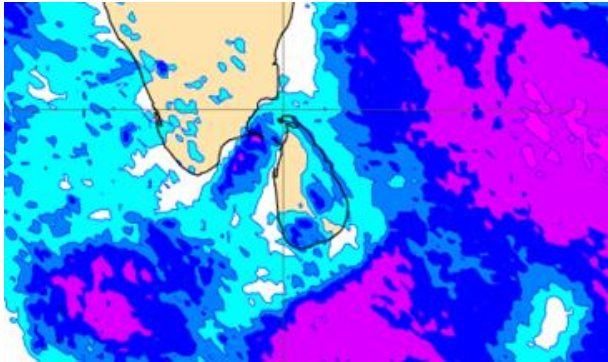
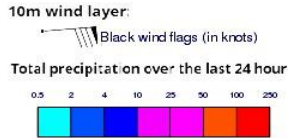
Wind Gust (m/s)



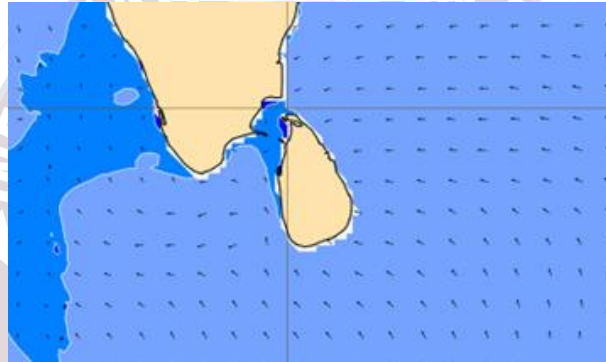
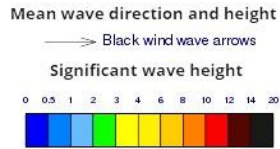
Showers or thundershowers will occur at several places in the sea areas around the island.

Wind speed will be (25-35) kmph. Wind speed will increase up to 45-50 kmph at times and the sea condition can be fairly rough at times.

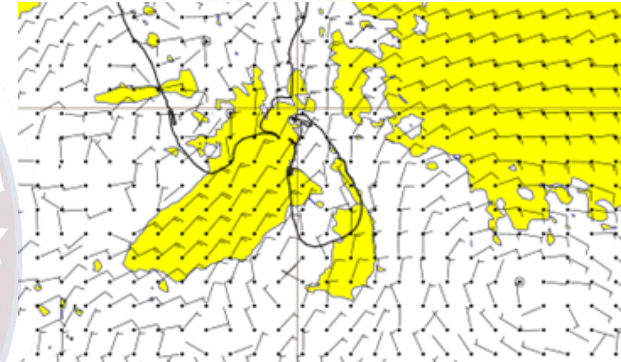
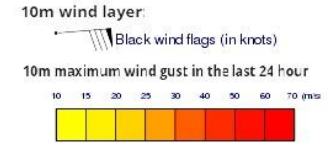
Wind and Rainfall Forecast (Total precipitation for 24 hrs)



Significant wave height (in meters)



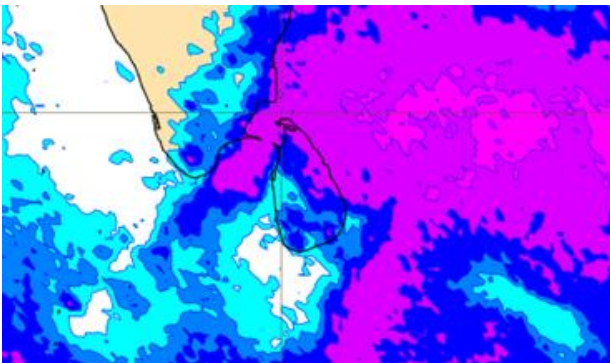
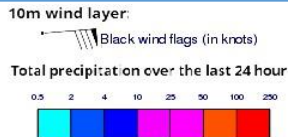
Wind Gust (m/s)



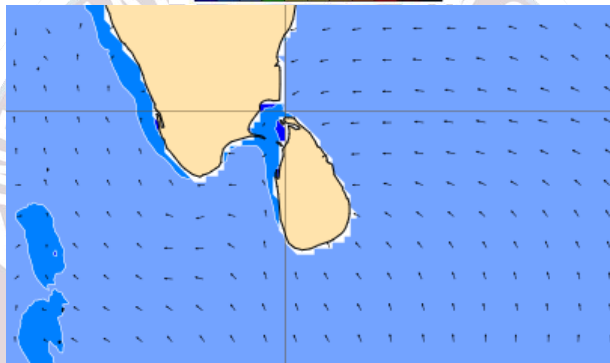
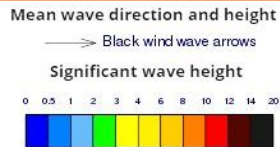
Showers or thundershowers will occur at several places in the sea areas around the island.

Wind speed will be (25-35) kmph. Wind speed will increase up to 45-50 kmph at times and the sea condition can be fairly rough at times.

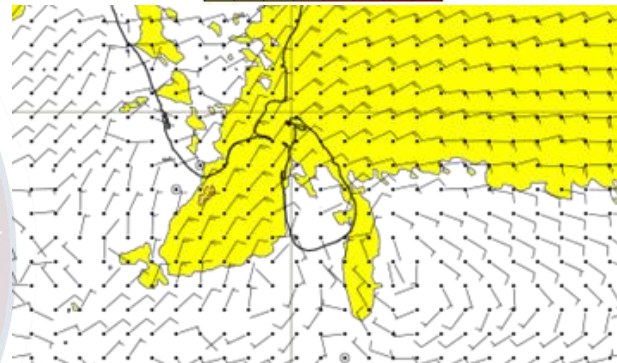
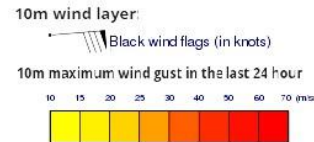
Wind and Rainfall Forecast (Total precipitation for 24 hrs)



Significant wave height (in meters)



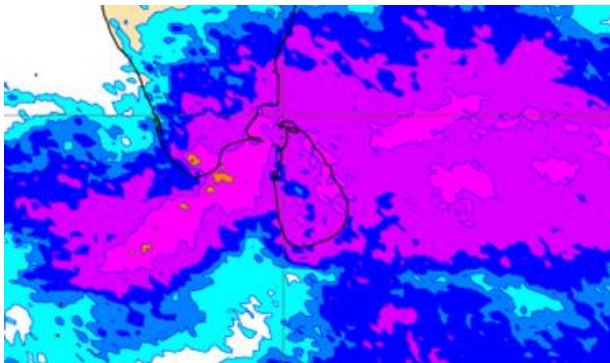
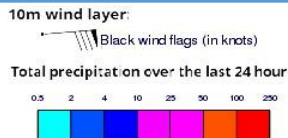
Wind Gust (m/s)



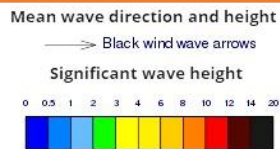
Showers or thundershowers will occur at several places in the sea areas around the island.

Wind speed will be (25-35) kmph. Wind speed will increase up to 45-50 kmph at times and the sea condition can be fairly rough at times.

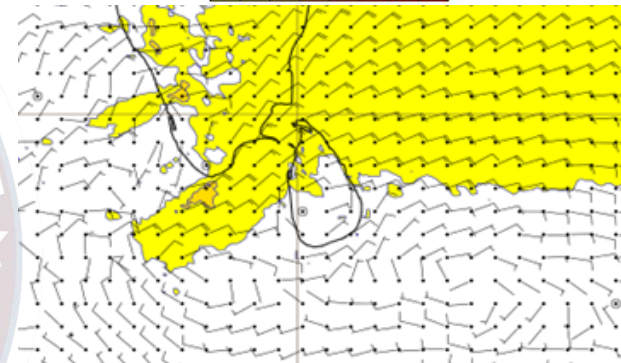
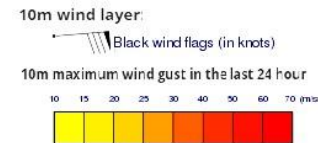
Wind and Rainfall Forecast (Total precipitation for 24 hrs)



Significant wave height (in meters)



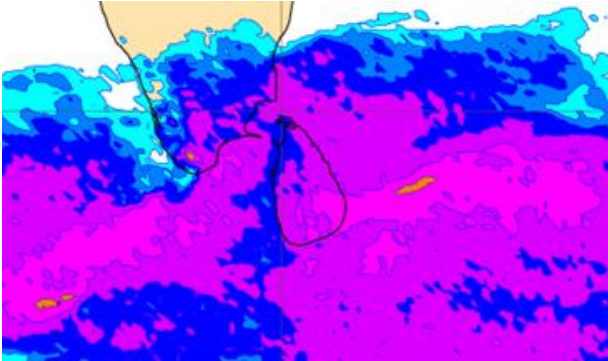
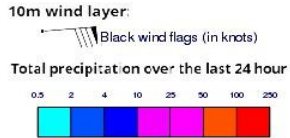
Wind Gust (m/s)



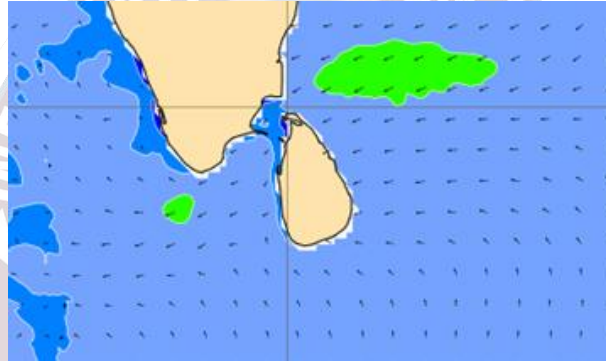
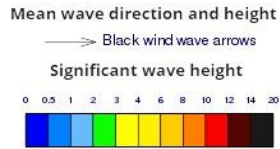
Showers or thundershowers may occur at several places in the sea areas around the island.

Wind speed will be (25-35) kmph. Wind speed will increase up to 40-50 kmph at times and the sea condition can be fairly rough at times in the sea areas extending from Colombo to Trincomalee via Kankasanturai.

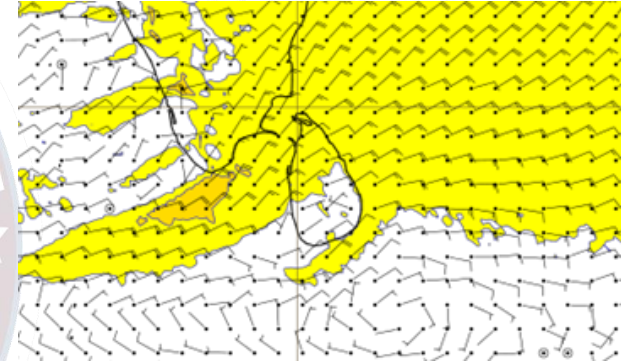
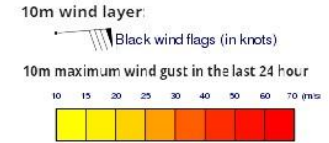
Wind and Rainfall Forecast (Total precipitation for 24 hrs)



Significant wave height (in meters)



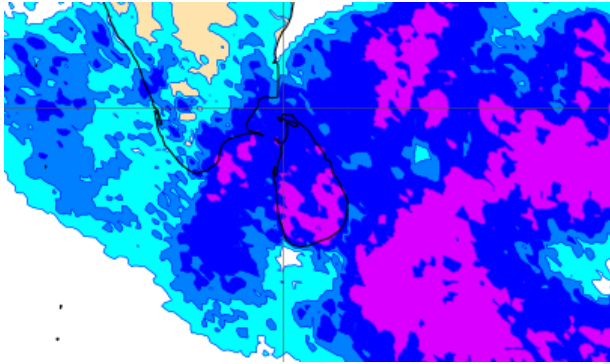
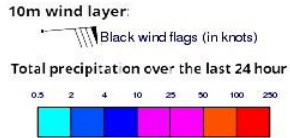
Wind Gust (m/s)



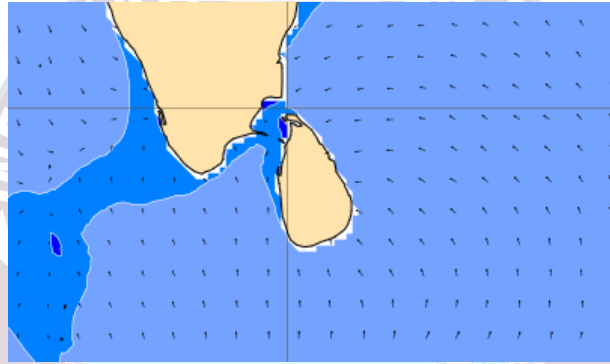
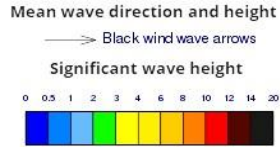
Showers or thundershowers will occur at several places in the sea areas around the island.

Wind speed will be (25-35) kmph. Wind speed will increase up to 45-50 kmph at times and the sea condition can be fairly rough at times.

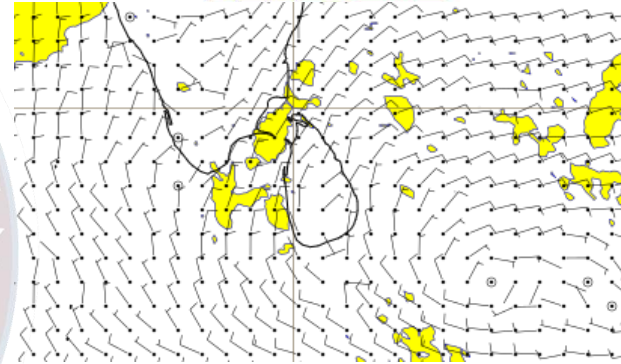
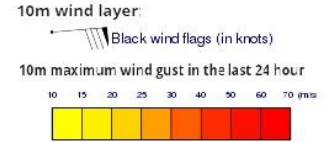
Wind and Rainfall Forecast (Total precipitation for 24 hrs)



Significant wave height (in meters)



Wind Gust (m/s)



Showers or thundershowers will occur at several places in the sea areas around the island.

Wind speed will be (25-35) kmph. Wind speed will increase up to 45-50 kmph at times and the sea condition can be fairly rough at times.



Thank you!