

08 DAYS WEATHER FORECAST FOR COASTAL AREAS AROUND SRI LANKA

Storm Direction




WARNING



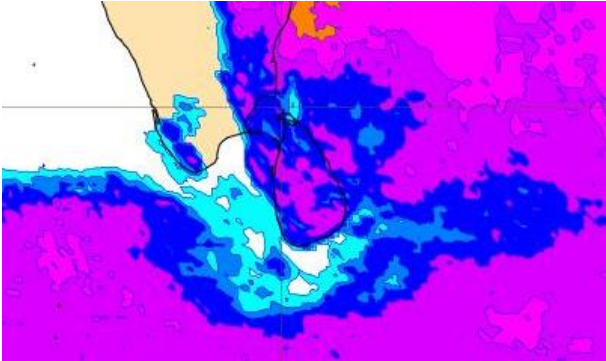
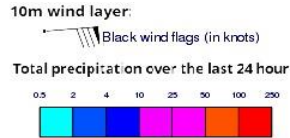
**INFORMATION FUSION CENTRE
COLOMBO**

Know weather before it comes

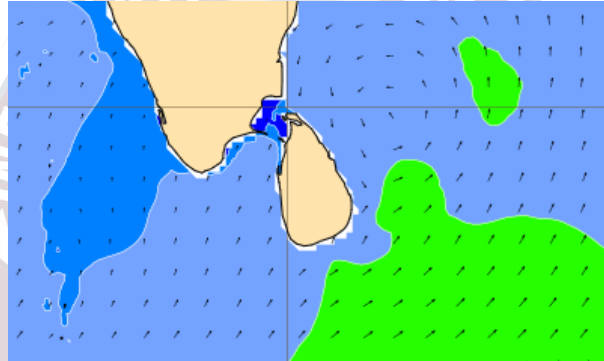
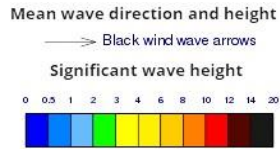


Issued at 0400 p.m. on 16th December 2024
Marine Weather Division, National Meteorological Centre, Department of
Meteorology, Sri Lanka

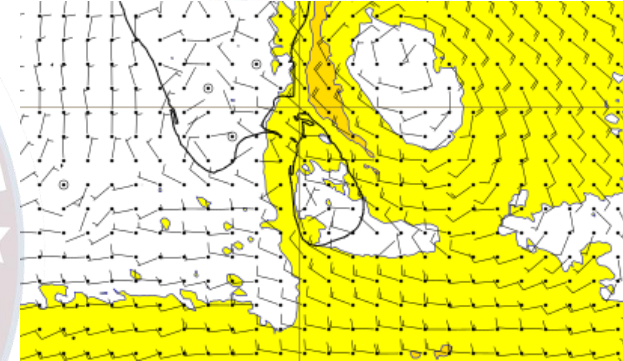
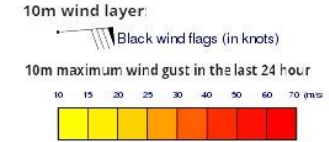
Wind and Rainfall Forecast (Total precipitation for 24 hrs)



Significant wave height (in meters)



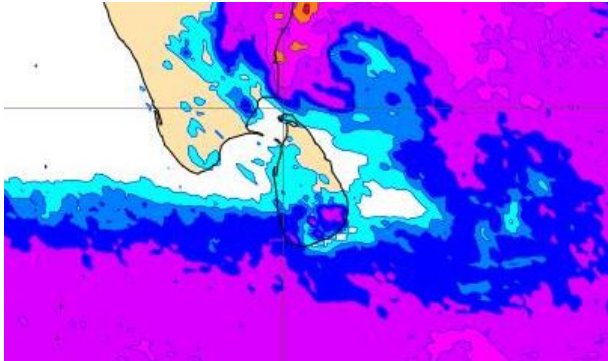
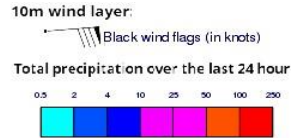
Wind Gust (m/s)



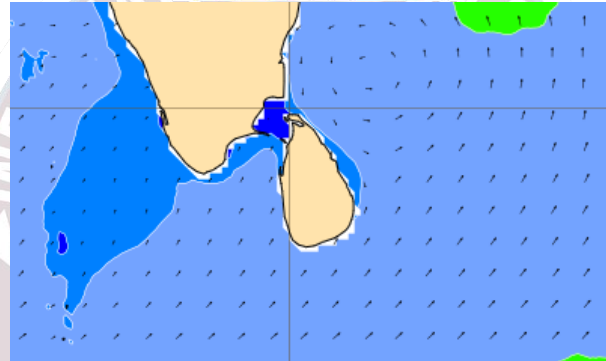
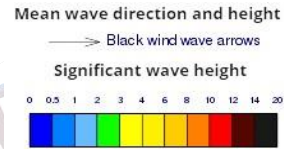
Showers or thundershowers will occur at times in the sea areas extending from Kankasanthurai to Hambantota via Trincomalee. Showers or thundershowers may occur at several places in the other sea areas around the island.

Winds will be Northerly in the sea areas off the costs extending from Pottuvil to Galle via Trincomalee, Kankasanthurai, Puttalam and Colombo. Wind speed will be (30-40) kmph. Wind speed will increase up to 50 kmph at times and the sea condition can be fairly rough at times in these sea areas. Winds will be variable in direction in the other sea areas around the island and wind speed will be (25-35) kmph.

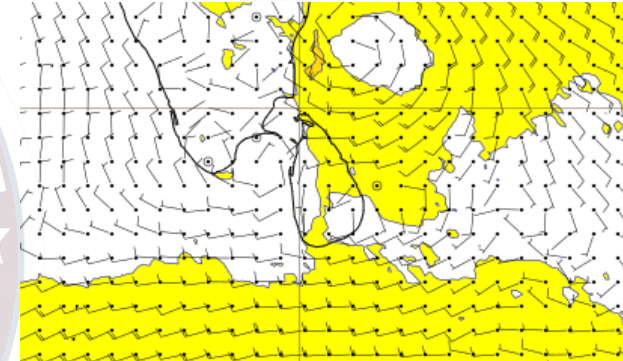
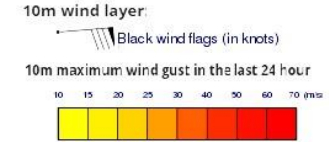
Wind and Rainfall Forecast (Total precipitation for 24 hrs)



Significant wave height (in meters)



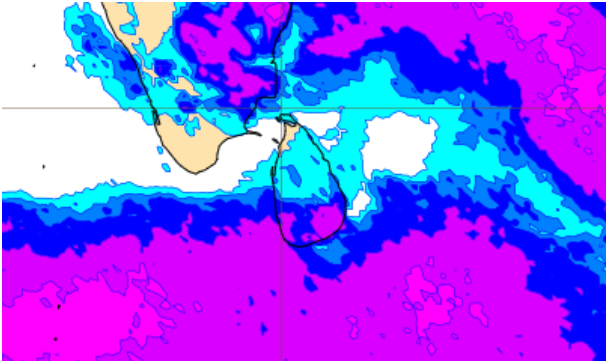
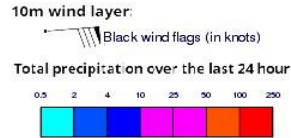
Wind Gust (m/s)



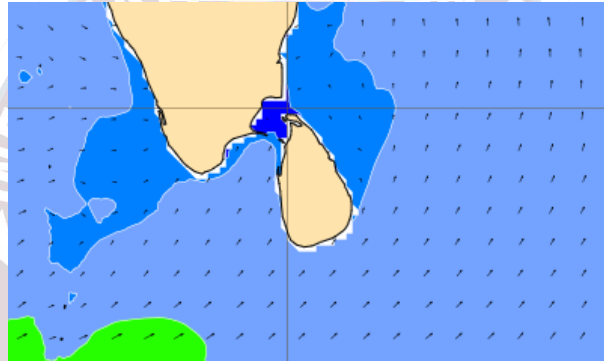
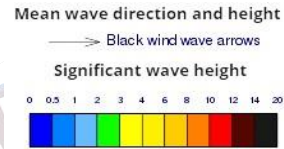
Showers or thundershowers will occur at times in the sea areas extending from Kankasanthurai to Hambantota via Trincomalee. Showers or thundershowers may occur at several places in the other sea areas around the island.

Winds will be Northerly in the sea areas off the costs extending from Pottuvil to Galle via Trincomalee, Kankasanthurai, Puttalam and Colombo. Wind speed will be (30-40) kmph. Wind speed will increase up to 50 kmph at times and the sea condition can be fairly rough at times in these sea areas. Winds will be variable in direction in the other sea areas around the island and wind speed will be (25-35) kmph.

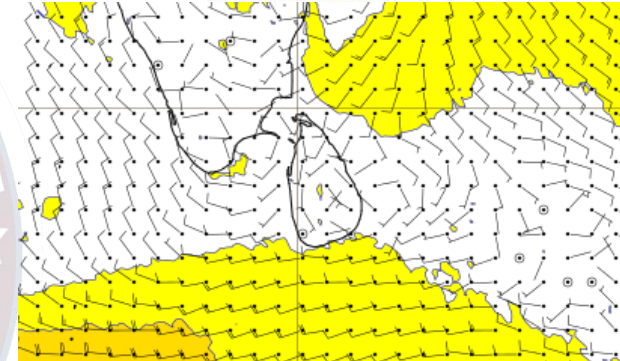
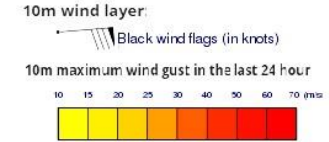
Wind and Rainfall Forecast (Total precipitation for 24 hrs)



Significant wave height (in meters)

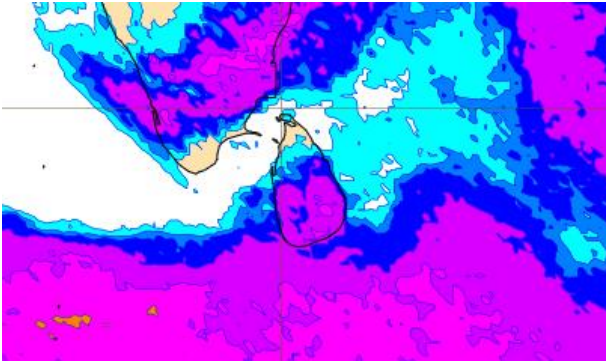
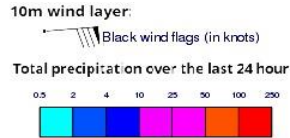


Wind Gust (m/s)

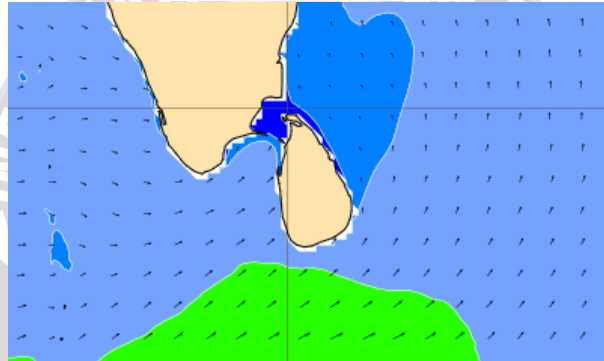
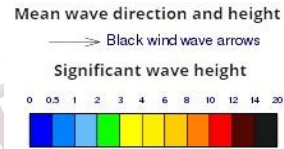


Showers or thundershowers may occur at several places in the sea areas around the island. Wind speed will be (25-35) kmph in the sea areas around the island.

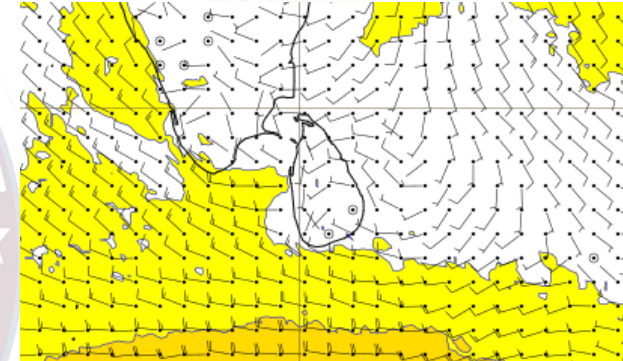
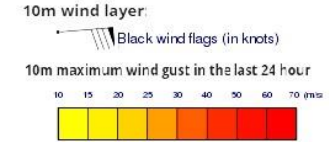
Wind and Rainfall Forecast (Total precipitation for 24 hrs)



Significant wave height (in meters)



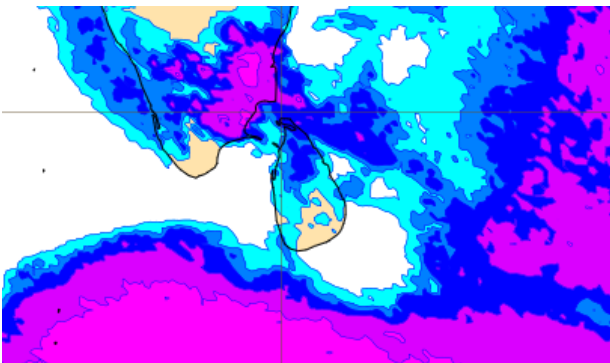
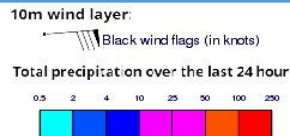
Wind Gust (m/s)



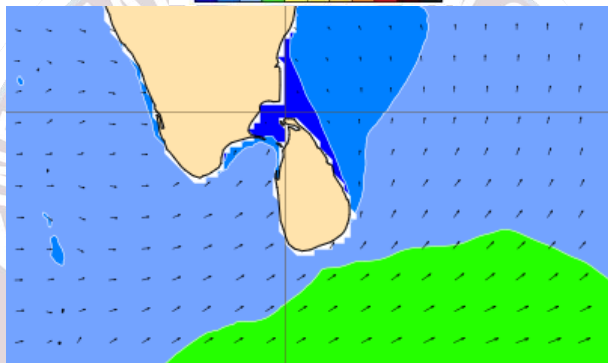
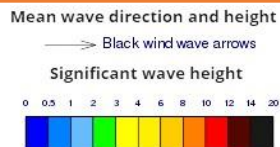
Showers or thundershowers will occur at several places in the sea areas extending from Colombo to Pottuvil via Hambantota. Showers or thundershowers may occur at few places in the other sea areas around the island.

Wind speed will be (30-40) kmph. Wind speed will increase up to 50 kmph at times and the sea condition can be fairly rough at times in the sea areas extending from Galle to Hambantota via Matara.

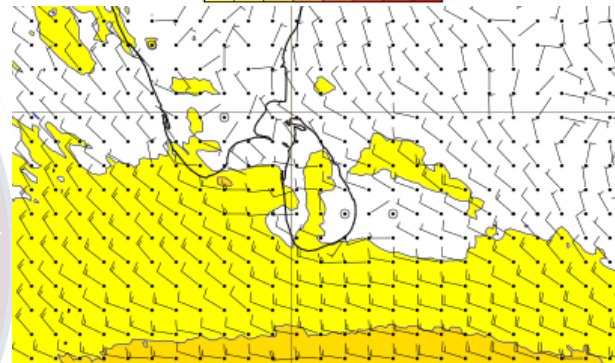
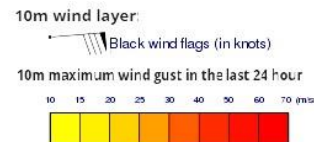
Wind and Rainfall Forecast (Total precipitation for 24 hrs)



Significant wave height (in meters)



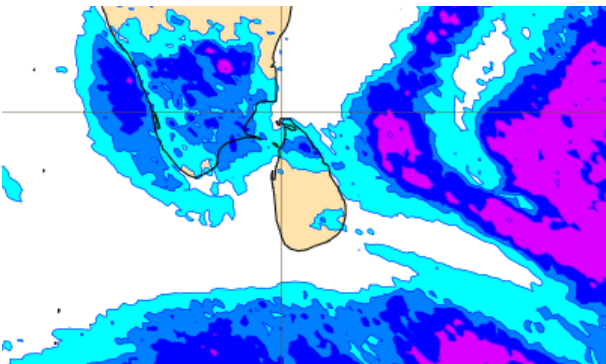
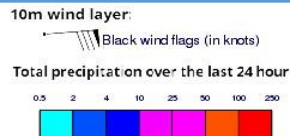
Wind Gust (m/s)



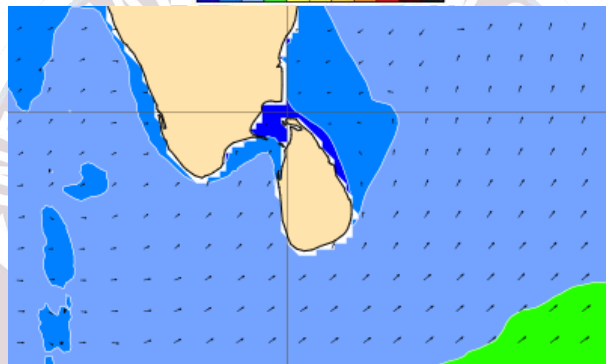
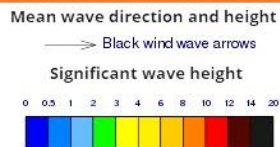
Showers or thundershowers may occur at few places in the sea areas around the island.

Wind speed will be (30-40) kmph. Wind speed will increase up to 50 kmph at times and the sea condition can be fairly rough at times in the sea areas extending from Colombo to Pottuvil via Hambantota.

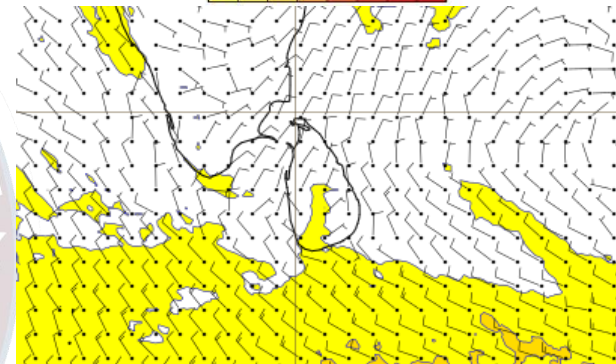
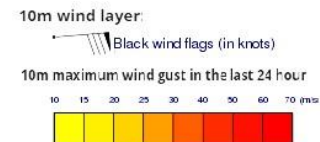
Wind and Rainfall Forecast (Total precipitation for 24 hrs)



Significant wave height (in meters)



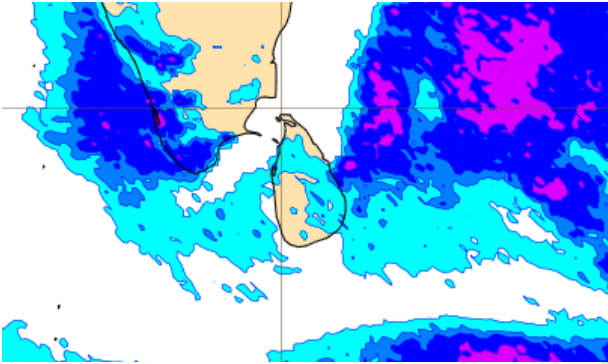
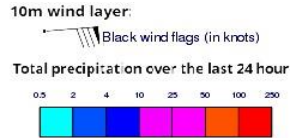
Wind Gust (m/s)



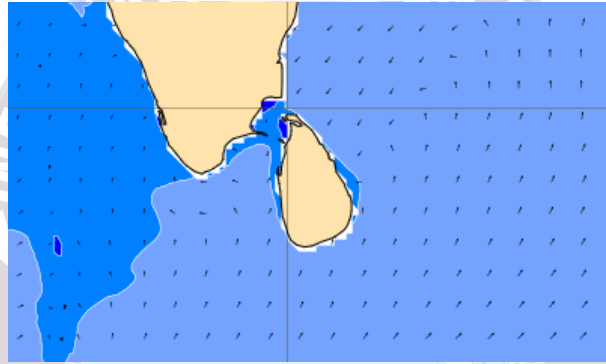
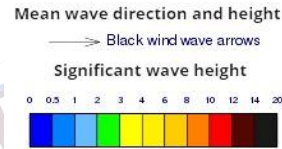
Showers or thundershowers may occur at a few places in the other sea areas around the island.

Wind speed will be (25-35) kmph. Wind speed will increase up to 40-50 kmph at times and the sea condition can be fairly rough at times in the sea areas extending from Galle to Hambantota via Matara.

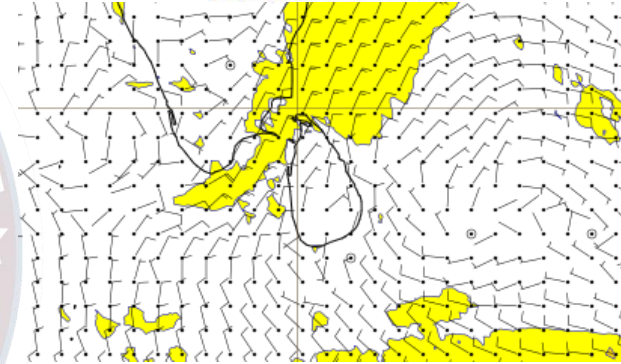
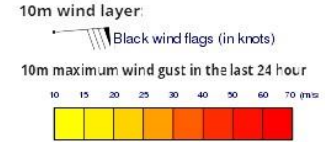
Wind and Rainfall Forecast (Total precipitation for 24 hrs)



Significant wave height (in meters)

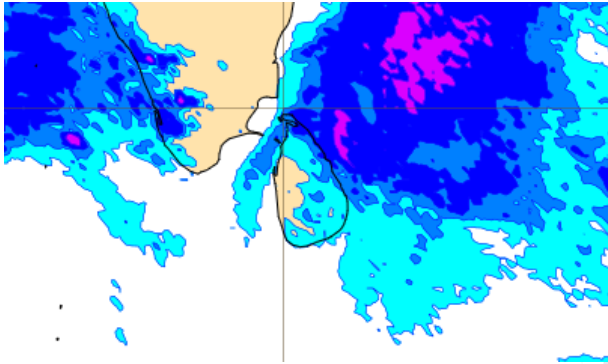
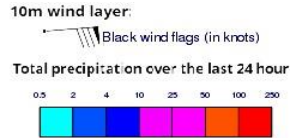


Wind Gust (m/s)

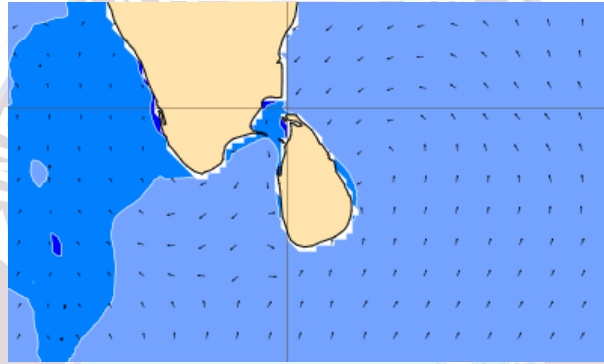
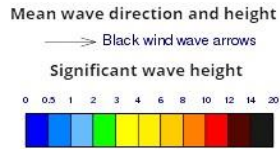


Showers or thundershowers may occur at a few places in the sea areas around the island. Wind speed will be 20-30 kmph in the sea areas around the island.

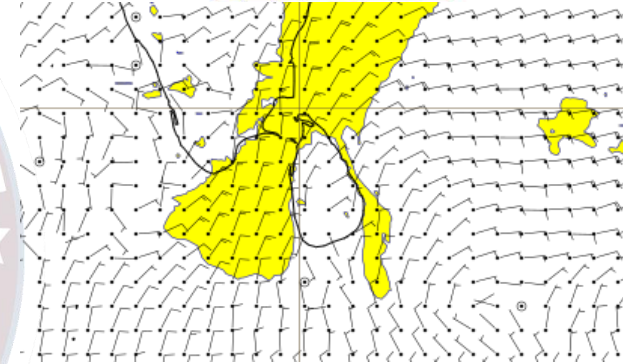
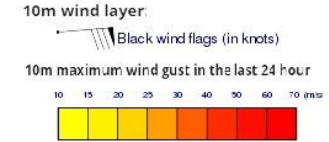
Wind and Rainfall Forecast (Total precipitation for 24 hrs)



Significant wave height (in meters)



Wind Gust (m/s)



Showers or thundershowers may occur at several places in the sea areas around the island.

Winds will be Northerly in the sea areas off the coasts extending from Pottuvil to Galle via Trincomalee, Kankasanthurai, Puttalam and Colombo. Wind speed will be (30-40) kmph. Wind speed will increase up to 50 kmph at times and the sea condition can be fairly rough at times in these sea areas. Winds will be variable in direction in the other sea areas around the island and wind speed will be (25-35) kmph.

The logo is a circular emblem. The outer ring contains the text 'INFORMATION FUSION CENTRE' at the top and 'COLOMBO - SRI LANKA' at the bottom. The inner circle features a map of the Indian subcontinent and surrounding regions, with a blue ocean area below it.

Thank you!