

08 DAYS WEATHER FORECAST FOR COASTAL AREAS AROUND SRI LANKA


Storm Direction



WARNING

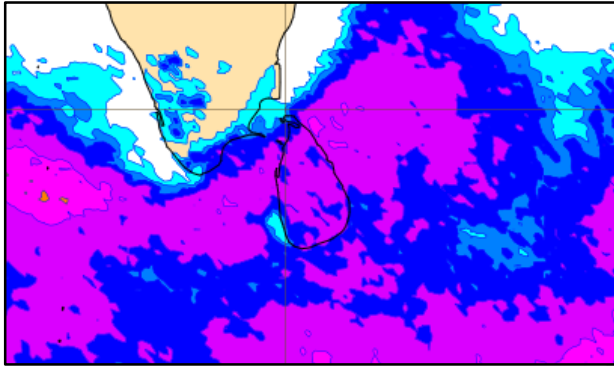
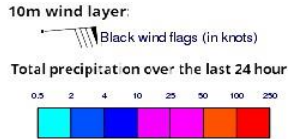


**INFORMATION FUSION CENTRE
COLOMBO**

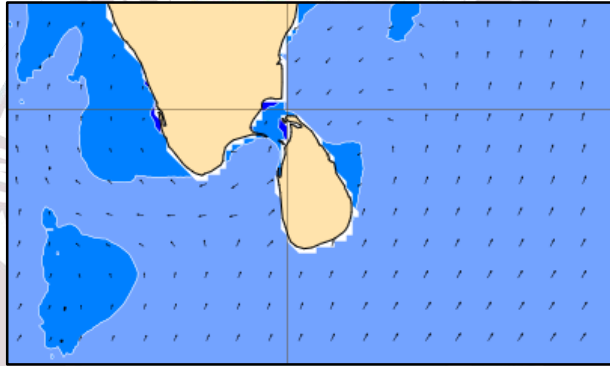
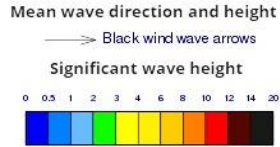


Issued at 0400 p.m. on 20th November 2024
Marine Weather Division, National Meteorological Centre, Department of
Meteorology, Sri Lanka

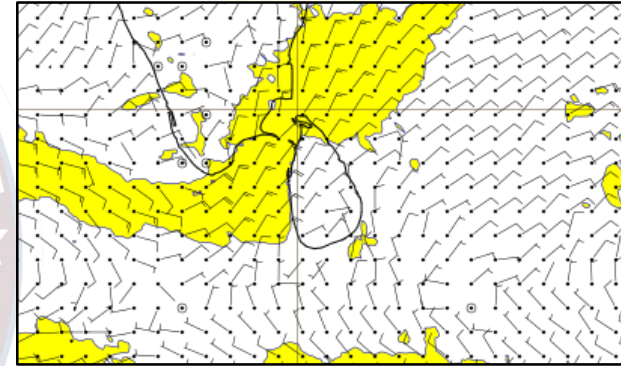
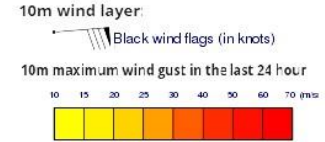
Wind and Rainfall Forecast (Total precipitation for 24 hrs)



Significant wave height (in meters)



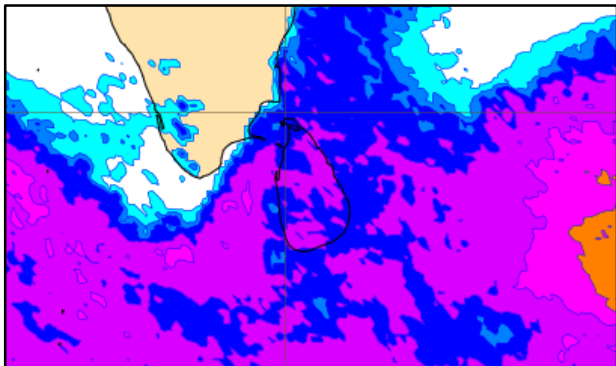
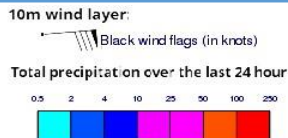
Wind Gust (m/s)



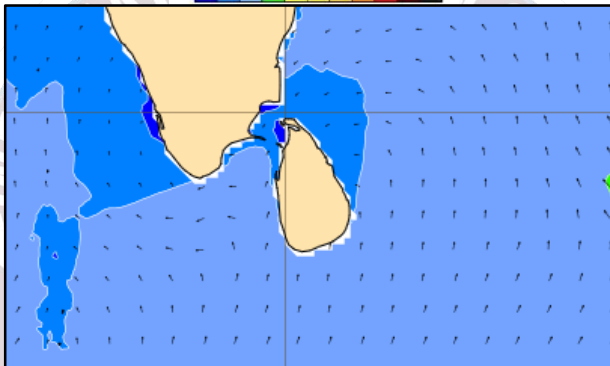
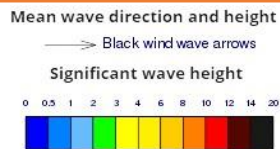
Showers or thundershowers will occur at several places in the sea areas around the island.

Wind speed will be 20-30 kmph in the sea areas around the island. Wind speed can increase up to 45-50 kmph at times and the sea condition will be fairly rough at times in the sea areas extending from Colombo to Mullaitivu via Puttalam and Kankasanthurai.

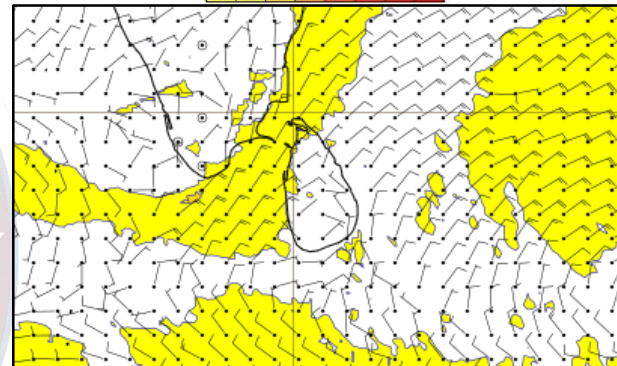
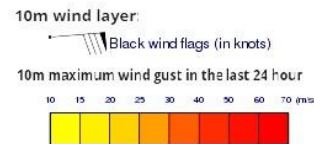
Wind and Rainfall Forecast (Total precipitation for 24 hrs)



Significant wave height (in meters)



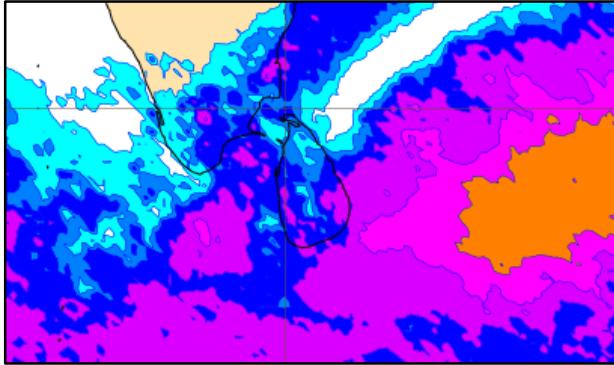
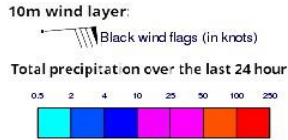
Wind Gust (m/s)



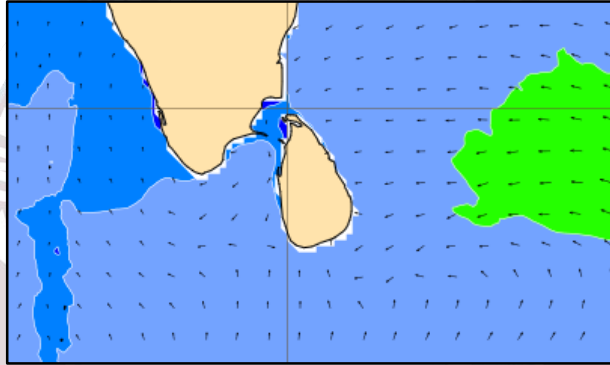
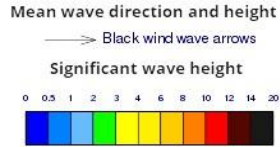
Showers or thundershowers will occur at several places in the sea areas around the island.

Wind speed will be 20-30 kmph in the sea areas around the island. Wind speed can increase up to 45-50 kmph at times and the sea condition will be fairly rough at times in the sea areas extending from Colombo to Mullaitivu via Puttalam and Kankasanthurai.

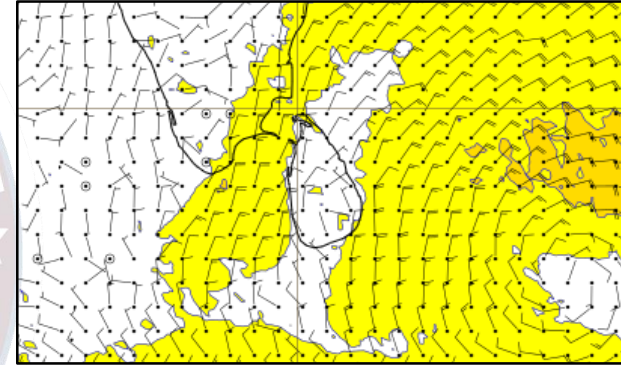
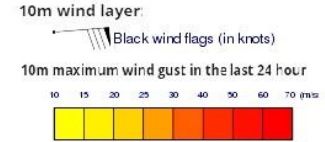
Wind and Rainfall Forecast (Total precipitation for 24 hrs)



Significant wave height (in meters)



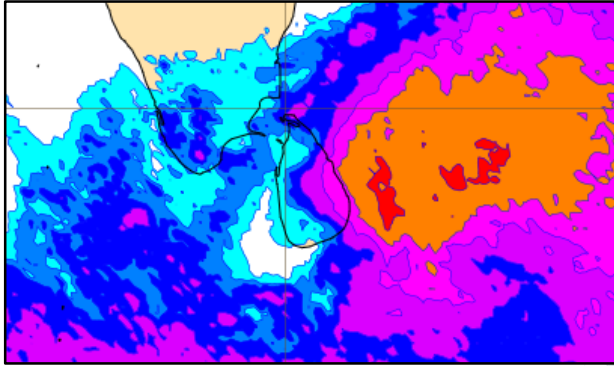
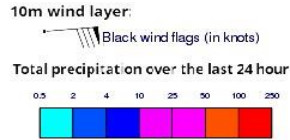
Wind Gust (m/s)



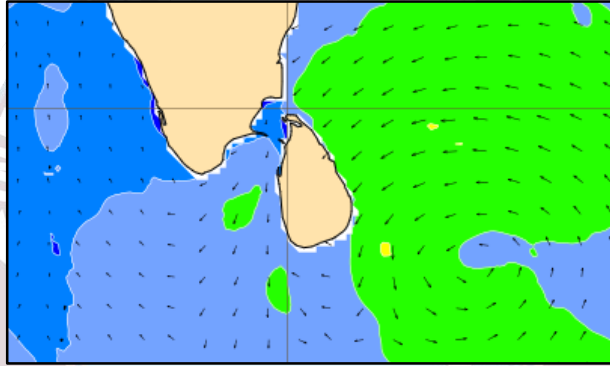
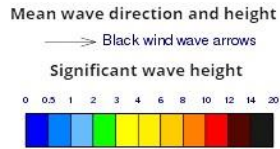
Showers or thundershowers may occur at several places in the sea areas around the island.

Wind speed will be 20-30 kmph in the sea areas around the island. Wind speed can increase up to 45-50 kmph at times and the sea condition will be fairly rough at times in the sea areas extending from Colombo to Kankasanthurai via Puttalam and from Hambantota to Pottuvil.

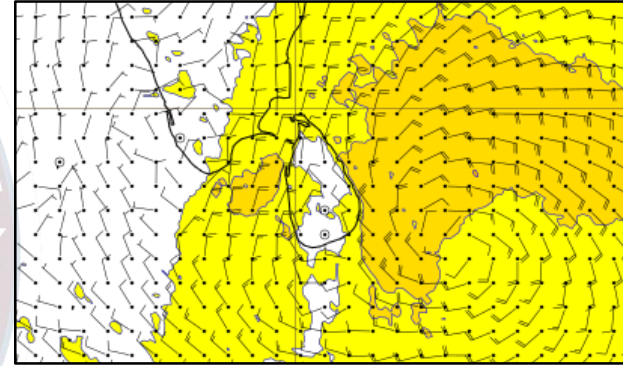
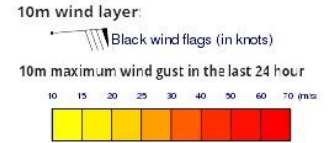
Wind and Rainfall Forecast (Total precipitation for 24 hrs)



Significant wave height (in meters)



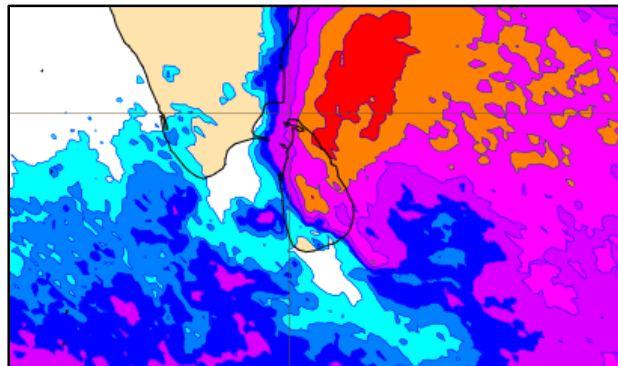
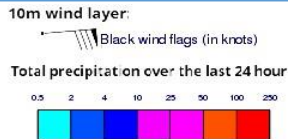
Wind Gust (m/s)



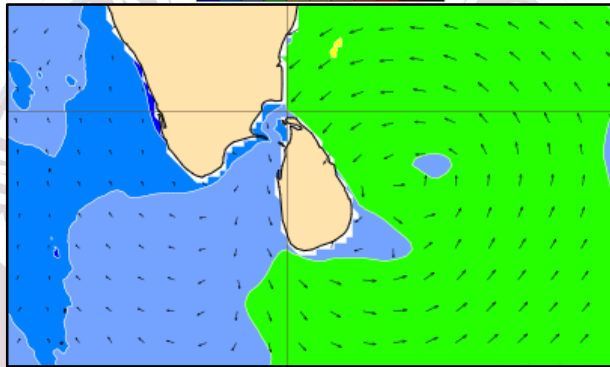
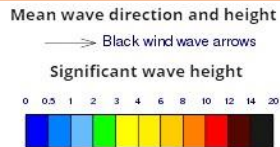
Heavy showers or thundershowers may occur at times in the sea areas extending from Batticaloa to Puttalam via Kankasanturai. Showers or thunder showers may occur at several places in the other sea areas around the island.

Wind speed will be 25-35 kmph in the sea areas around the island. Wind speed can be increase up to 60-70 kmph at times and the sea condition will be rough at times.

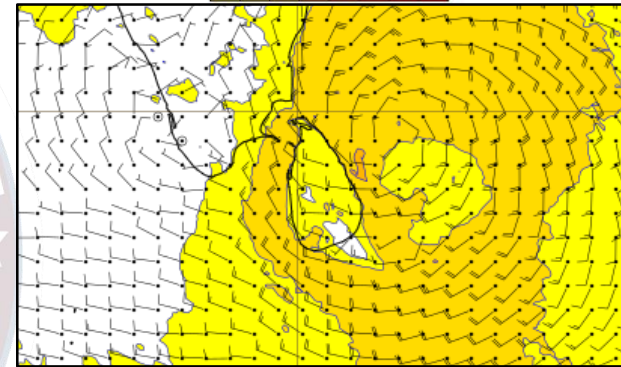
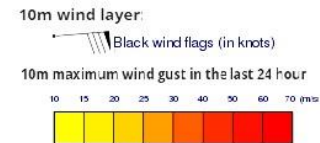
Wind and Rainfall Forecast (Total precipitation for 24 hrs)



Significant wave height (in meters)



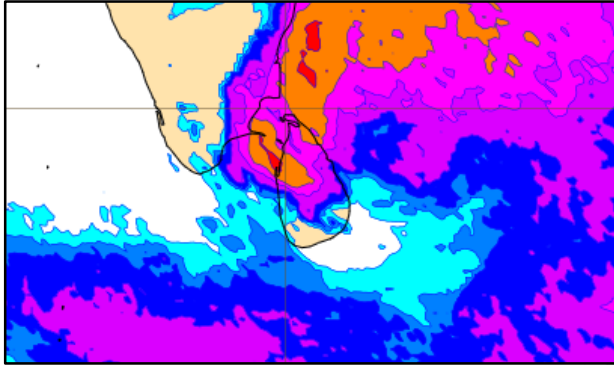
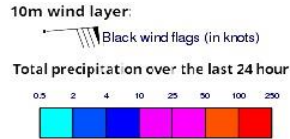
Wind Gust (m/s)



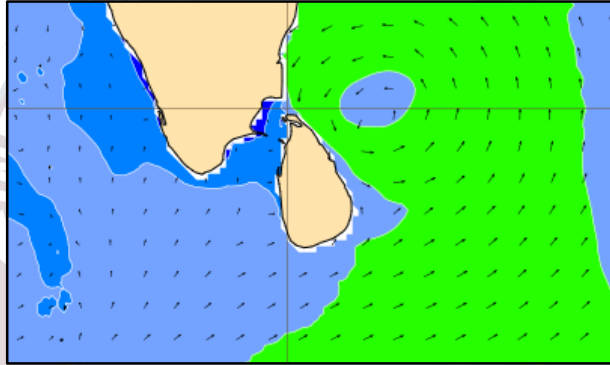
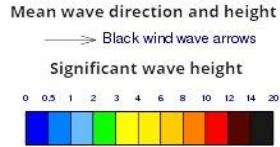
Heavy showers or thundershowers may occur at times in the sea areas extending from Batticaloa to Puttalam via Kankasanturai. Showers or thunder showers may occur at several places in the other sea areas around the island.

Wind speed will be 35-45 kmph in the sea areas around the island. Wind speed can be increase up to 60-70 kmph at times and the sea condition will be very rough at times.

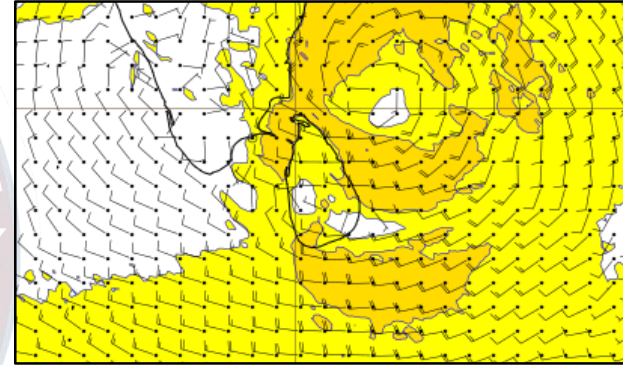
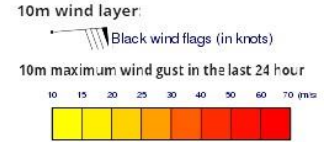
Wind and Rainfall Forecast (Total precipitation for 24 hrs)



Significant wave height (in meters)



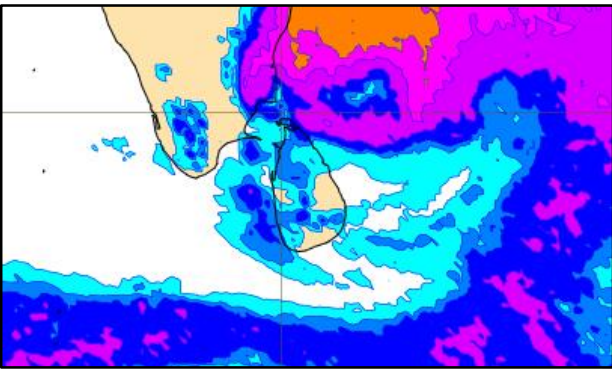
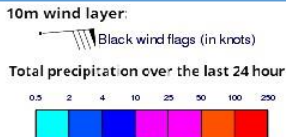
Wind Gust (m/s)



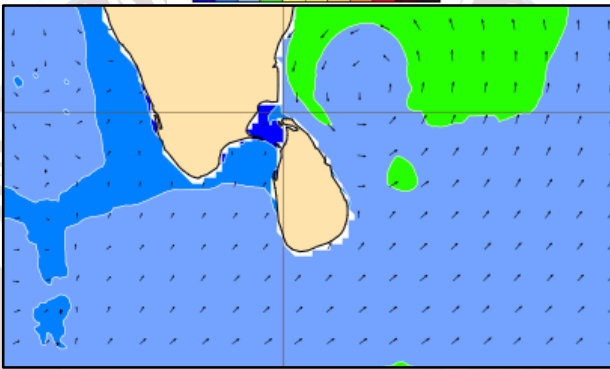
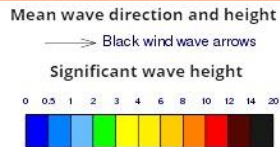
Heavy showers or thundershowers may occur at times in the sea areas extending from Batticaloa to Puttalam via Kankasanturai. Showers or thunder showers may occur at several places in the other sea areas around the island.

Wind speed will be 35-45 kmph in the sea areas around the island. Wind speed can be increase up to 60-70 kmph at times and the sea condition will be very rough at times.

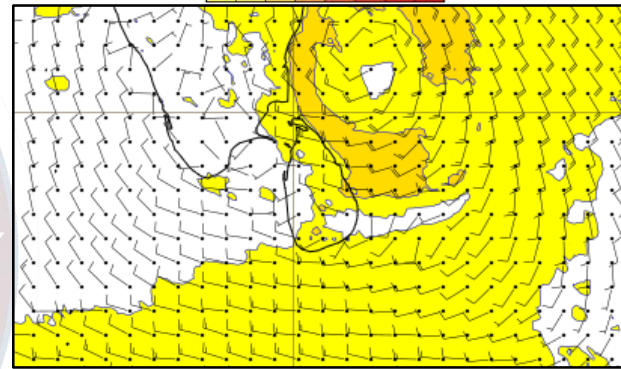
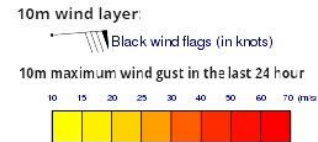
Wind and Rainfall Forecast (Total precipitation for 24 hrs)



Significant wave height (in meters)



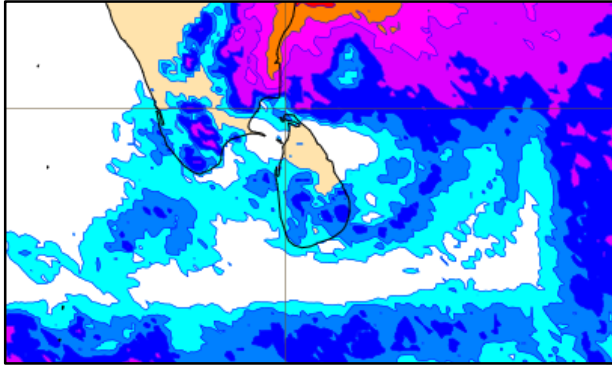
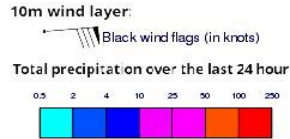
Wind Gust (m/s)



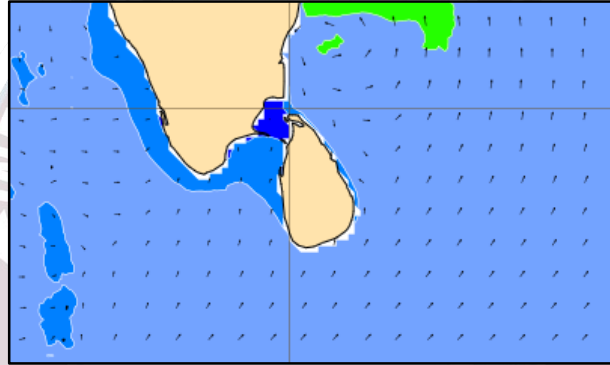
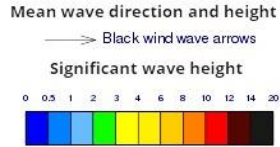
Heavy showers or thundershowers may occur at times in the sea areas extending from Batticaloa to Puttalam via Kankasanturai. Showers or thunder showers may occur at several places in the other sea areas around the island.

Wind speed will be 30-40 kmph in the sea areas around the island. Wind speed can be increase up to 60-70 kmph at times and the sea condition will be very rough at times.

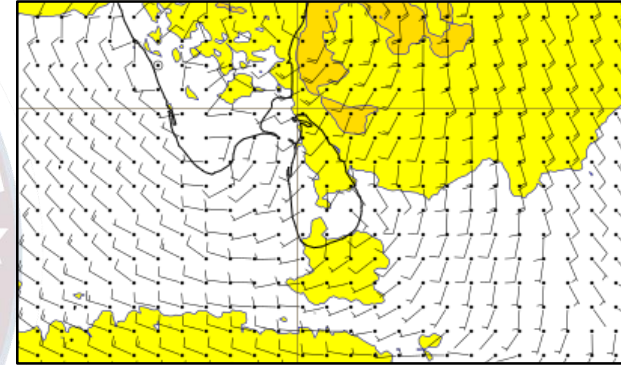
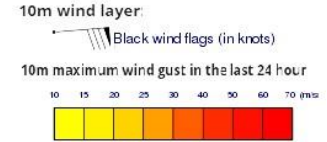
Wind and Rainfall Forecast (Total precipitation for 24 hrs)



Significant wave height (in meters)



Wind Gust (m/s)



Showers or thundershowers may occur at several places in the sea areas around the island.

Wind speed will be 30-40 kmph in the sea areas around the island. Wind speed can increase up to 50-60 kmph at times and the sea condition will be rough at times.



Thank you!