

# 08 DAYS WEATHER FORECAST FOR COASTAL AREAS AROUND SRI LANKA


Storm Direction



WARNING

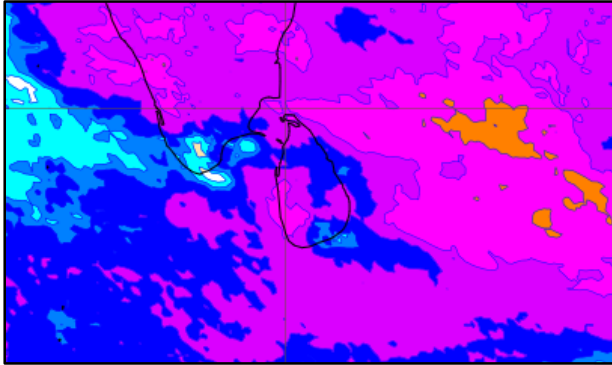
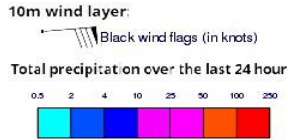


**INFORMATION FUSION CENTRE  
COLOMBO**

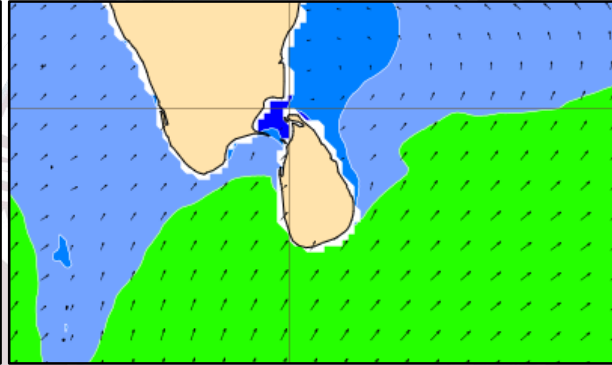
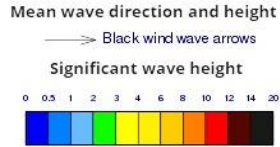


Issued at 1000 p.m. on 13<sup>th</sup> October 2024  
Marine Weather Division, National Meteorological Centre, Department of  
Meteorology, Sri Lanka

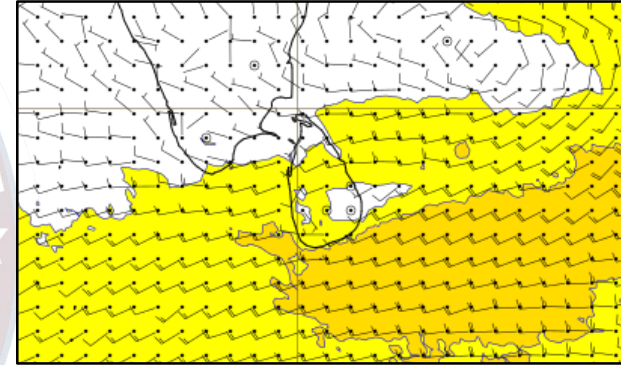
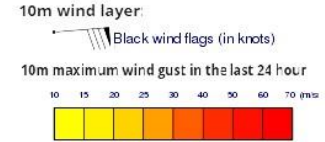
## Wind and Rainfall Forecast (Total precipitation for 24 hrs)



## Significant wave height (in meters)



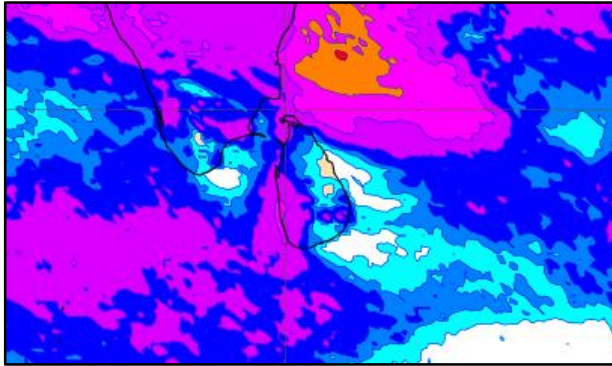
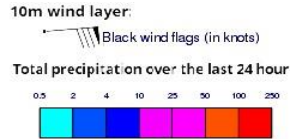
## Wind Gust (m/s)



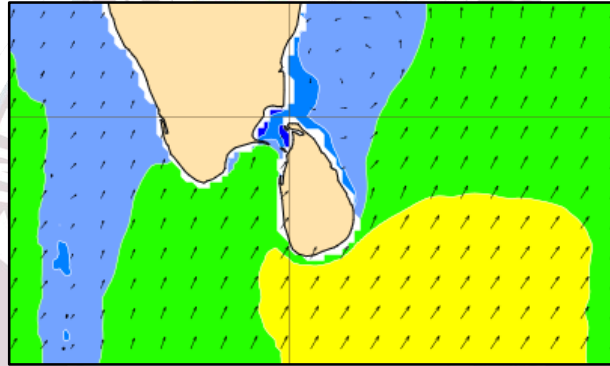
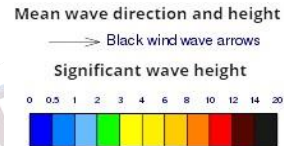
Showers or thundershowers will occur at several places in the sea areas around the island.

Winds will be south-westerly or variable in direction and speed will be (25-35) kmph. Wind speed can increase up to (50-60) kmph at times and can be rough at times in the sea areas off the coasts extending from Galle to Hambantota via Matara. Wind speed can increase up to 45 kmph at times in the sea areas off the coasts extending from Mannar to Galle via Colombo.

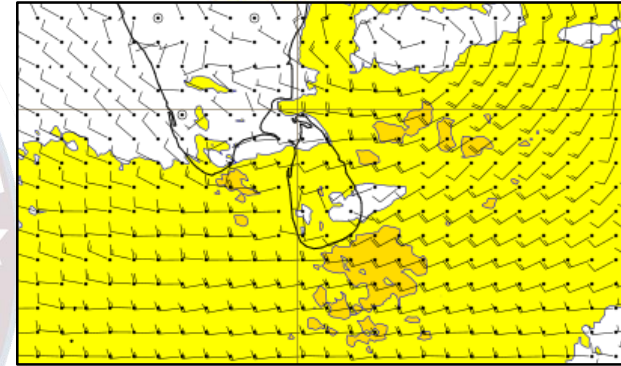
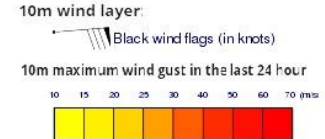
## Wind and Rainfall Forecast (Total precipitation for 24 hrs)



## Significant wave height (in meters)



## Wind Gust (m/s)

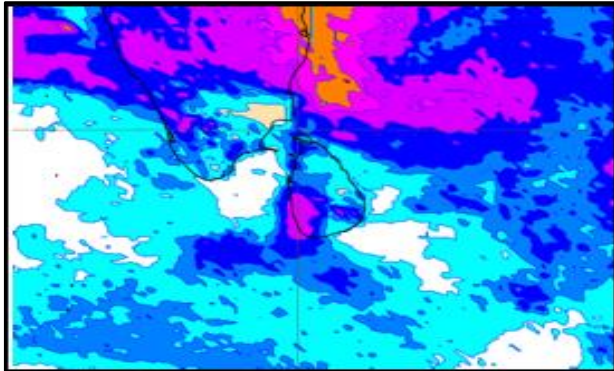
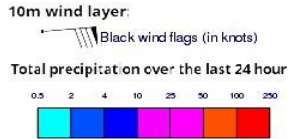


Showers or thundershowers will occur at several places in the sea areas around the island.

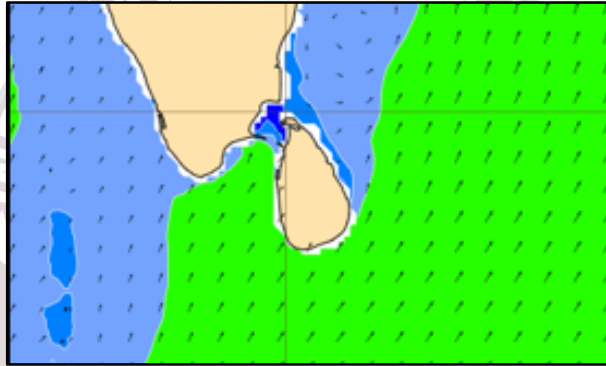
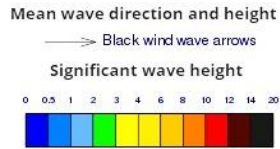
Winds will be south-westerly or variable in direction and speed will be (25-35) kmph. Wind speed can increase up to (50-60) kmph at times and can be rough at times in the sea areas off the coasts extending from Galle to Hambantota via Matara. Wind speed can increase up to 45 kmph at times in the sea areas off the coasts extending from Mannar to Galle via Colombo. Increase of swell waves (about 2.5 – 3.0 m) can be expected in the sea areas off the coast extending from Balapitiya to Pottuvil via Galle and Hambantota. These sea areas can be fairly rough at times.



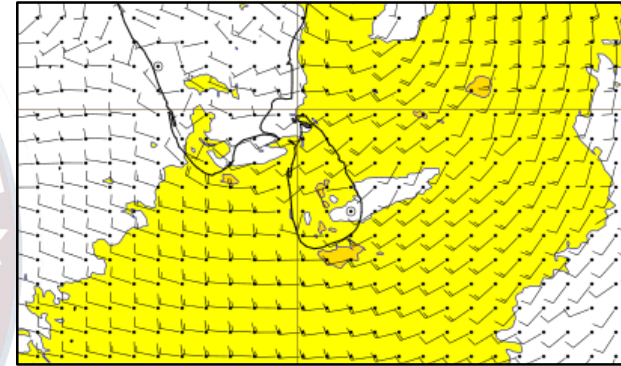
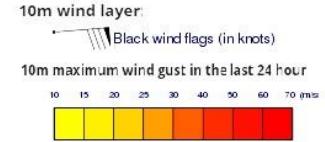
## Wind and Rainfall Forecast (Total precipitation for 24 hrs)



## Significant wave height (in meters)



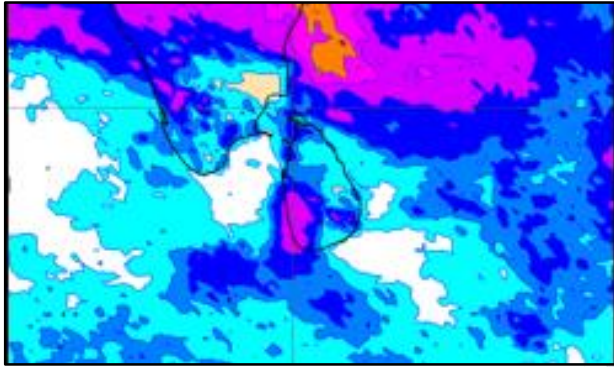
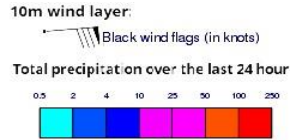
## Wind Gust (m/s)



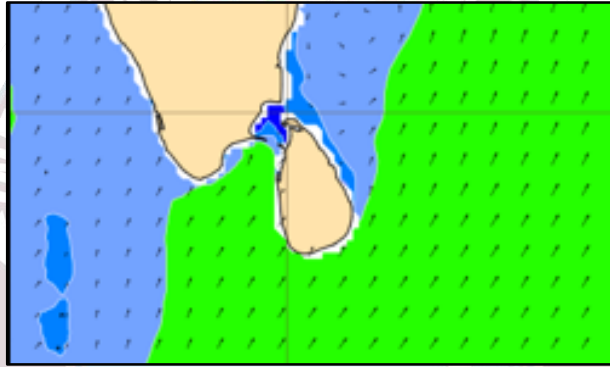
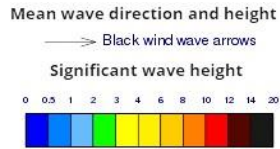
Showers or thundershowers will occur at several places in the sea areas around the island.

Winds will be south-westerly or variable in direction and speed will be (25-35) kmph. Wind speed can increase up to (50-55) kmph at times and can be rough at times in the sea areas off the coasts extending from Galle to Hambantota via Matara. Wind speed can increase up to 45 kmph at times in the sea areas off the coasts extending from Mannar to Galle via Colombo. Increase of swell waves (about 2.5 – 3.0 m) can be expected in the sea areas off the coast extending from Balapitiya to Pottuvil via Galle and Hambantota. These sea areas can be fairly rough at times.

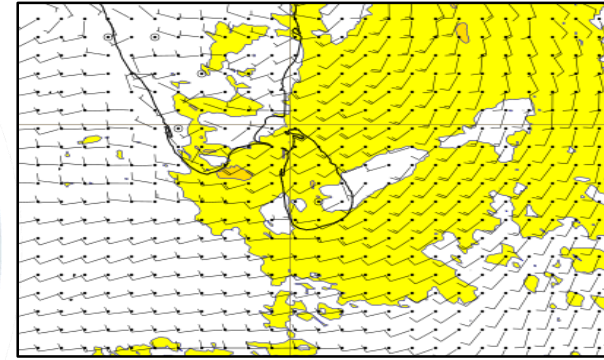
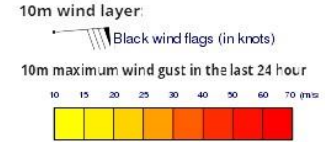
## Wind and Rainfall Forecast (Total precipitation for 24 hrs)



## Significant wave height (in meters)



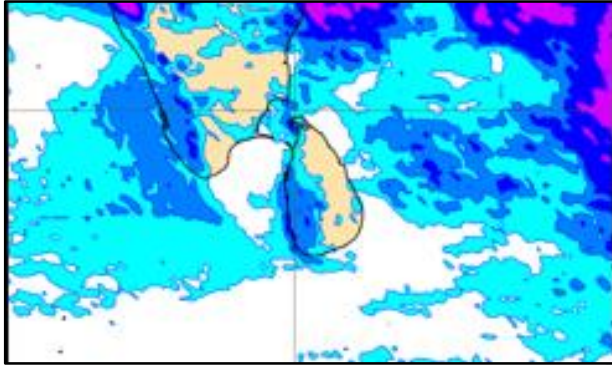
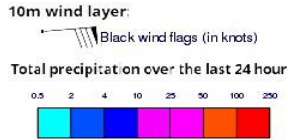
## Wind Gust (m/s)



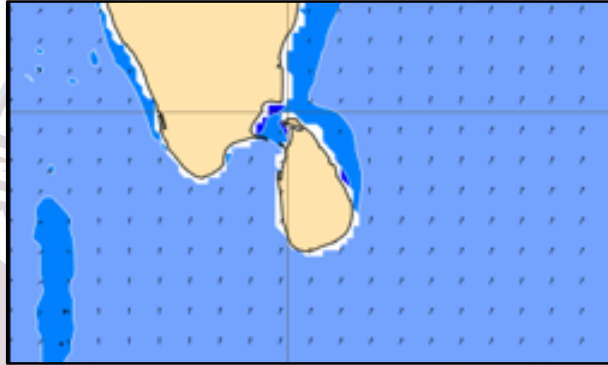
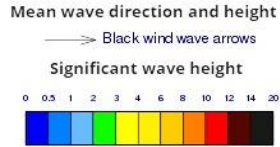
Showers or thundershowers will occur at several places in the sea areas around the island.

Winds will be south-westerly or variable in direction and speed will be (25-35) kmph. Wind speed can increase up to (50) kmph at times and can be rough at times in the sea areas off the coasts extending from Galle to Hambantota via Matara. Wind speed can increase up to 45 kmph at times in the sea areas off the coasts extending from Mannar to Galle via Colombo

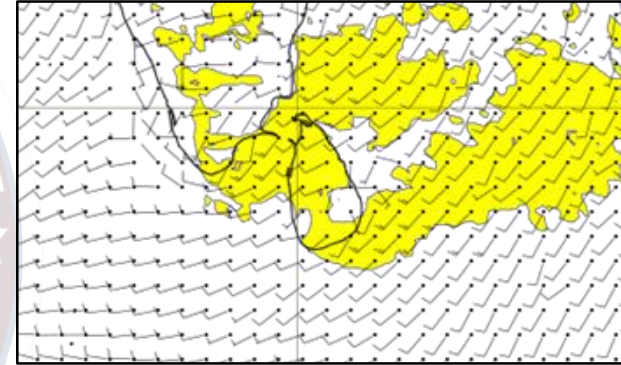
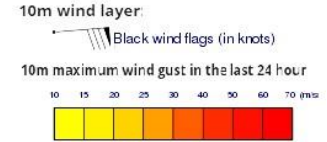
## Wind and Rainfall Forecast (Total precipitation for 24 hrs)



## Significant wave height (in meters)



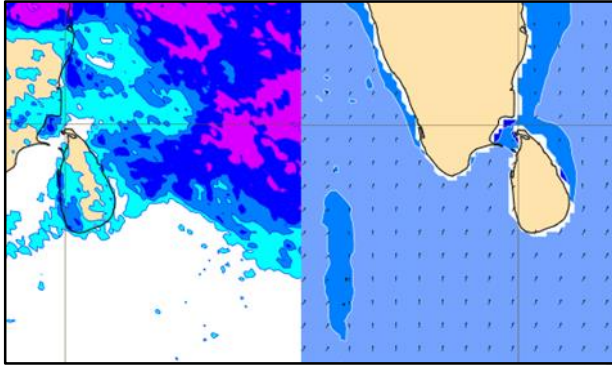
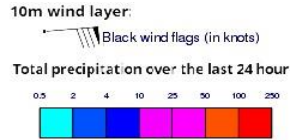
## Wind Gust (m/s)



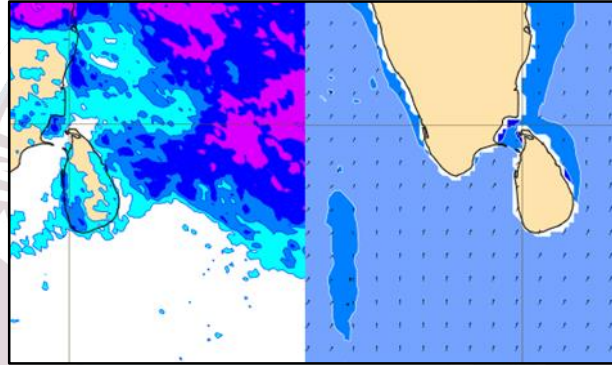
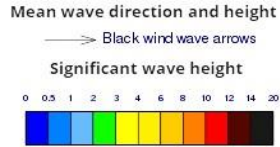
Showers or thundershowers will occur at several places in the sea areas around the island.

Wind speed will be (25-40) kmph in the sea areas around the island.

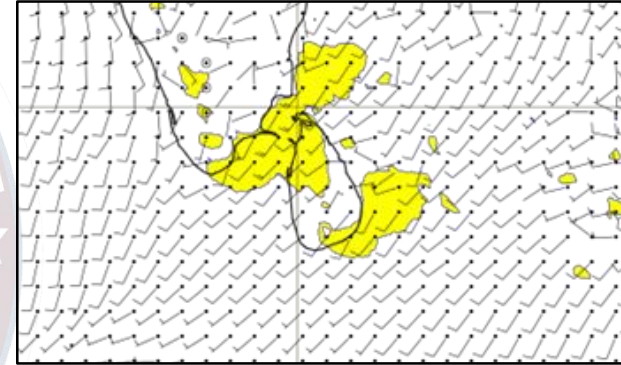
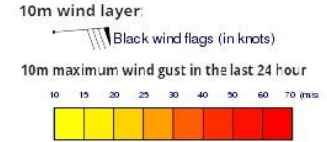
## Wind and Rainfall Forecast (Total precipitation for 24 hrs)



## Significant wave height (in meters)



## Wind Gust (m/s)

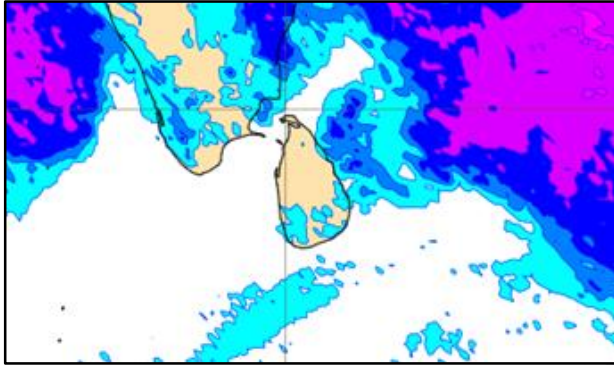
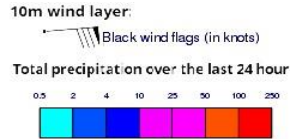


Showers or thundershowers will occur at several places in the sea areas around the island.

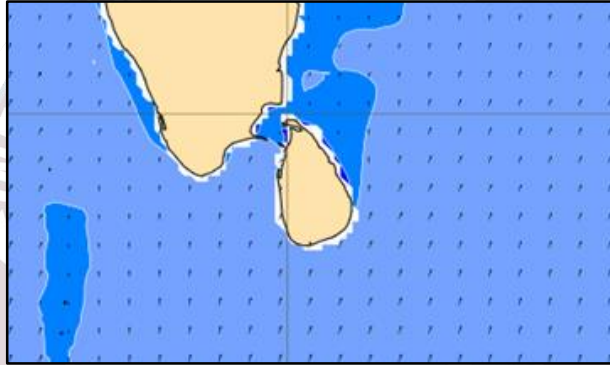
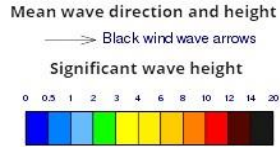
Wind speed will be (25-40) kmph in the sea areas around the island.



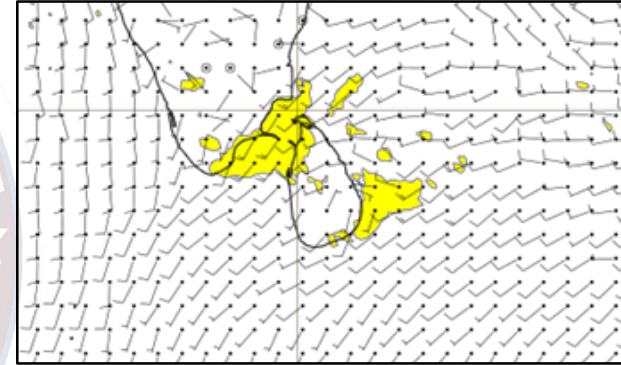
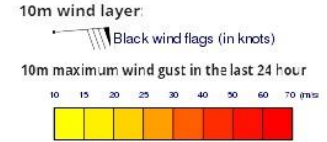
## Wind and Rainfall Forecast (Total precipitation for 24 hrs)



## Significant wave height (in meters)



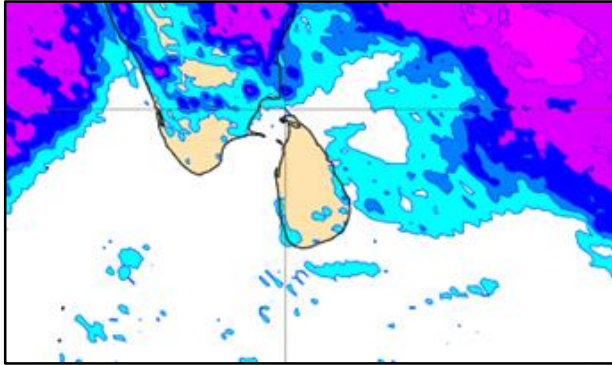
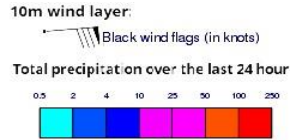
## Wind Gust (m/s)



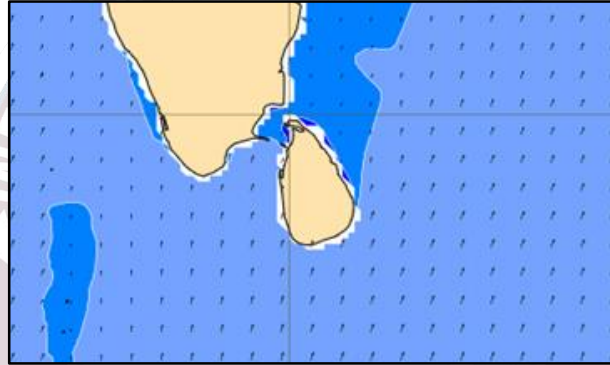
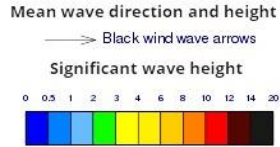
Showers or thundershowers will occur at several places in the sea areas around the island.

Wind speed will be (20-30) kmph in the sea areas around the island.

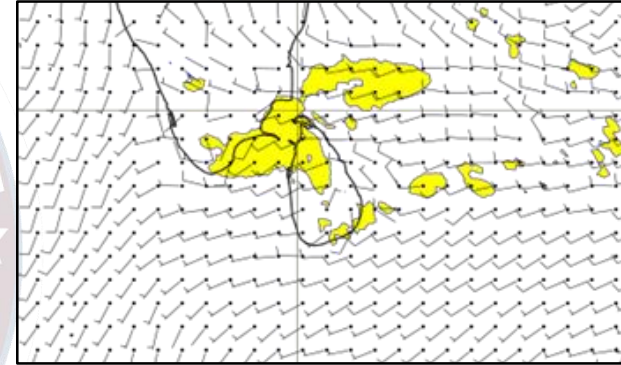
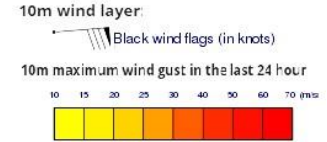
## Wind and Rainfall Forecast (Total precipitation for 24 hrs)



## Significant wave height (in meters)



## Wind Gust (m/s)



Showers or thundershowers will occur at several places in the sea areas around the island.

Wind speed will be (20-30) kmph in the sea areas around the island.



Thank you!