

08 DAYS WEATHER FORECAST FOR COASTAL AREAS AROUND SRI LANKA


Storm Direction



WARNING

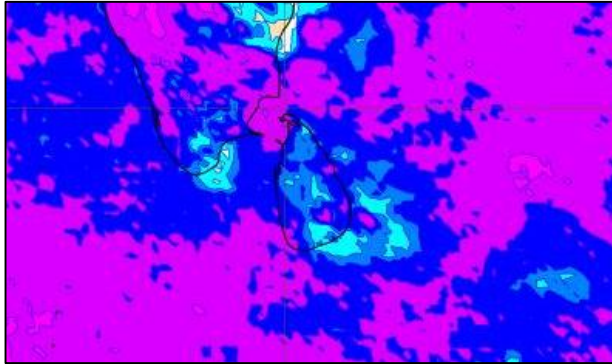
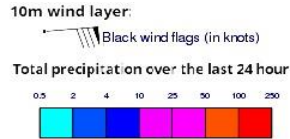


**INFORMATION FUSION CENTRE
COLOMBO**

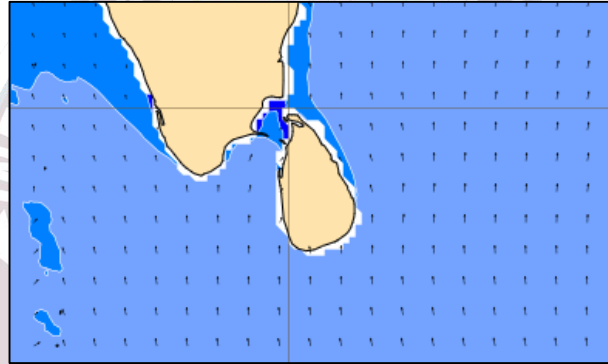
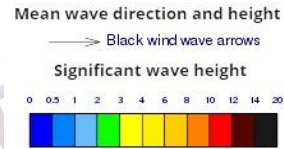


Issued at 0400 a.m. on 04th October 2024
Marine Weather Division, National Meteorological Centre, Department of
Meteorology, Sri Lanka

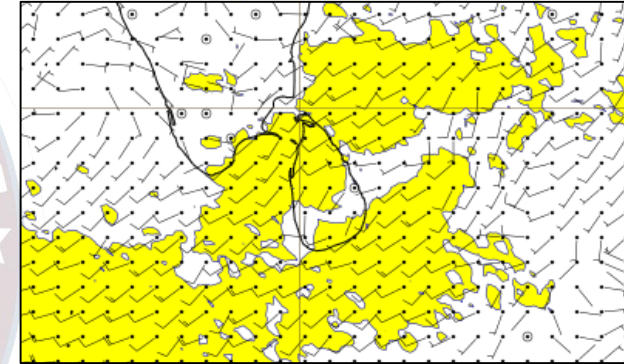
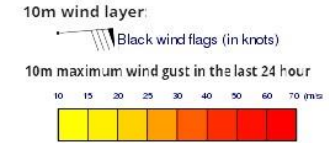
Wind and Rainfall Forecast (Total precipitation for 24 hrs)



Significant wave height (in meters)



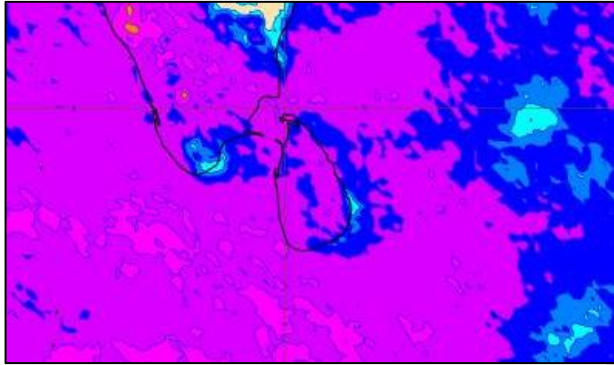
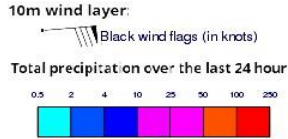
Wind Gust (m/s)



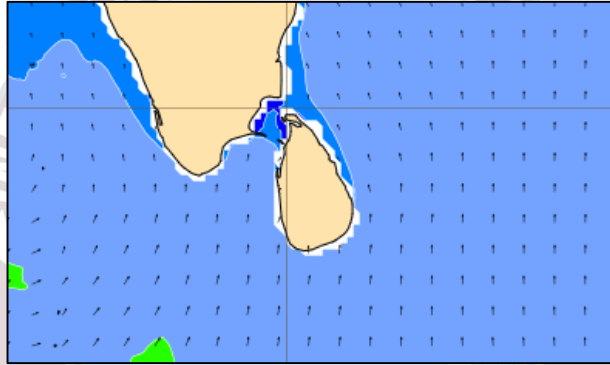
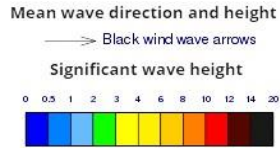
Showers or thundershowers may occur at several places in the sea areas around the island during the afternoon or night. Showers may occur at several places in the sea areas off the coast extending from Colombo to Hambantota via Galle.

Wind speed will be 25-35 kmph in the sea areas around the island. Wind speed can increase up to 45 kmph at times and the sea condition will be fairly rough at times in the sea areas extending from Kankasanturai to Puttalam via Mannar and from Hambantota to Pottuvil.

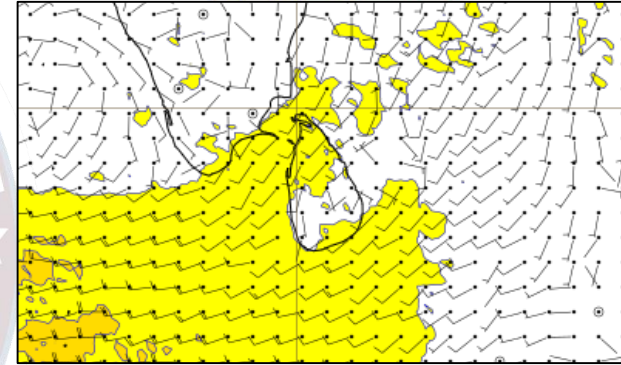
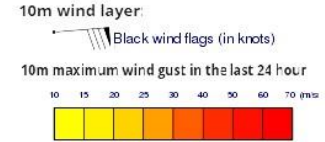
Wind and Rainfall Forecast (Total precipitation for 24 hrs)



Significant wave height (in meters)



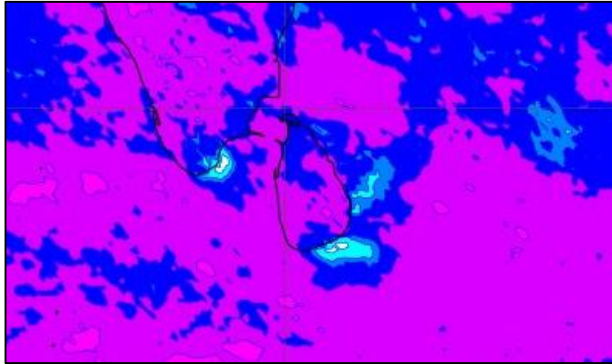
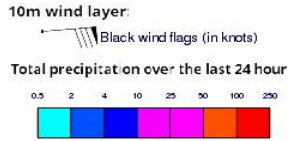
Wind Gust (m/s)



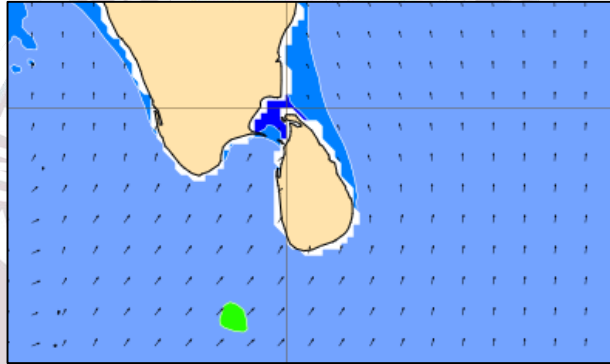
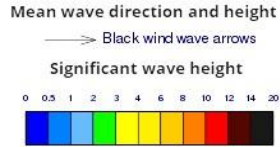
Showers or thundershowers may occur at several places in the sea areas around the island during the afternoon or night. Showers may occur at several places in the sea areas off the coast extending from Colombo to Hambantota via Galle.

Wind speed will be 25-35 kmph in the sea areas around the island. Wind speed can increase up to 45 kmph at times and the sea condition will be fairly rough at times in the sea areas extending from Kankasanturai to Puttalam via Mannar and from Galle to Pottuvil via Hambantota.

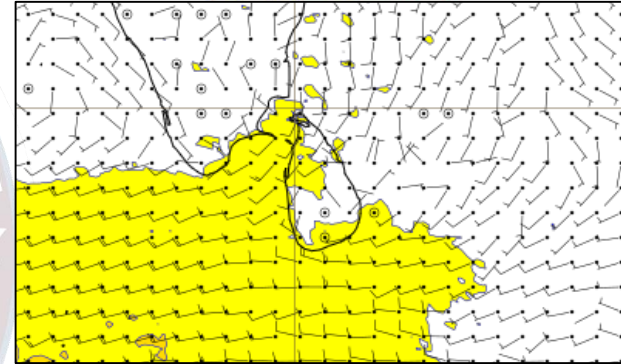
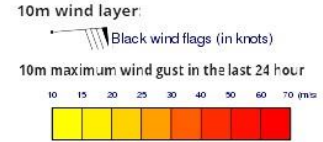
Wind and Rainfall Forecast (Total precipitation for 24 hrs)



Significant wave height (in meters)



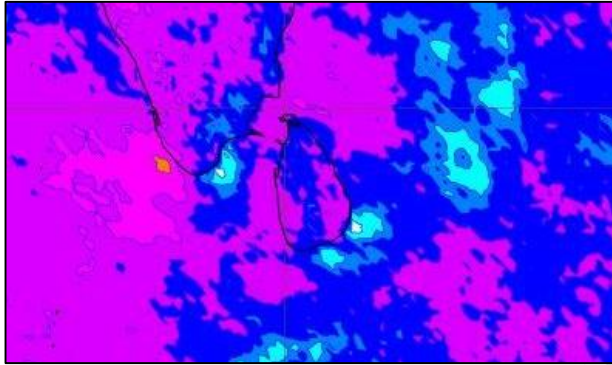
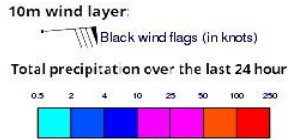
Wind Gust (m/s)



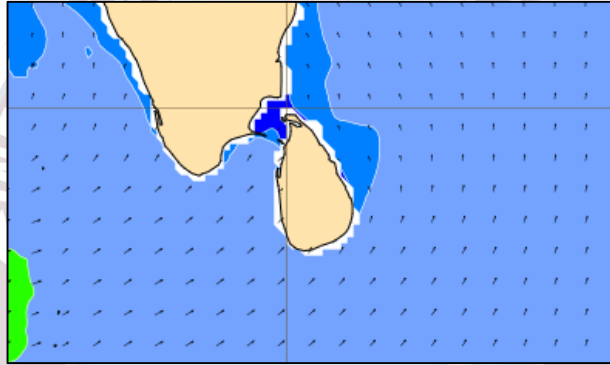
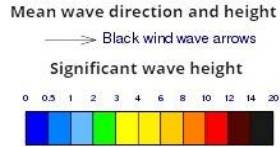
Showers or thundershowers may occur at several places in the sea areas around the island during the afternoon or night. Showers may occur at several places in the sea areas off the coast extending from Colombo to Hambantota via Galle.

Wind speed will be 25-35 kmph in the sea areas around the island. Wind speed can increase up to 45-50 kmph at times and the sea condition will be fairly rough at times in the sea areas extending from Kankasanturai to Puttalam via Mannar and from Galle to Pottuvil via Hambantota.

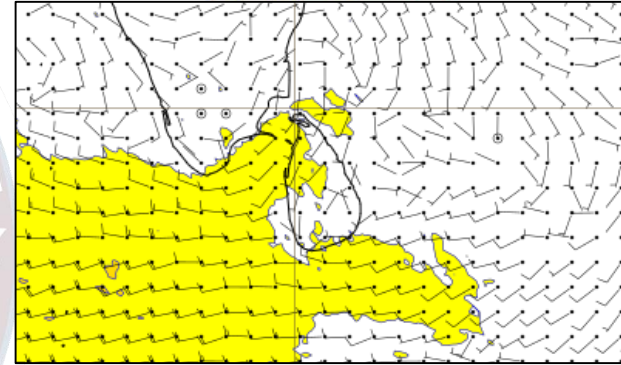
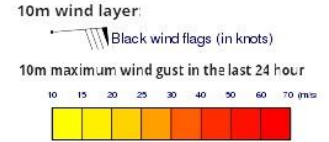
Wind and Rainfall Forecast (Total precipitation for 24 hrs)



Significant wave height (in meters)



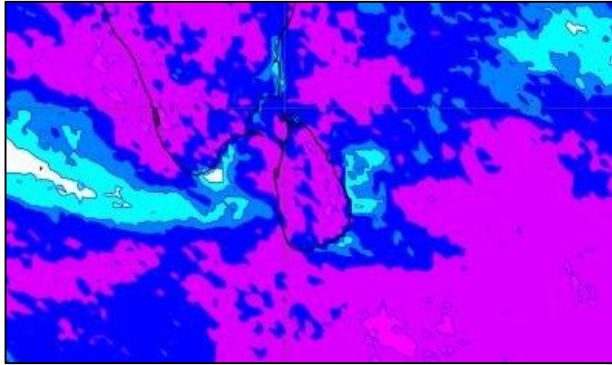
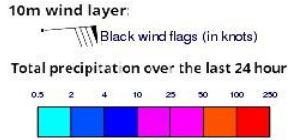
Wind Gust (m/s)



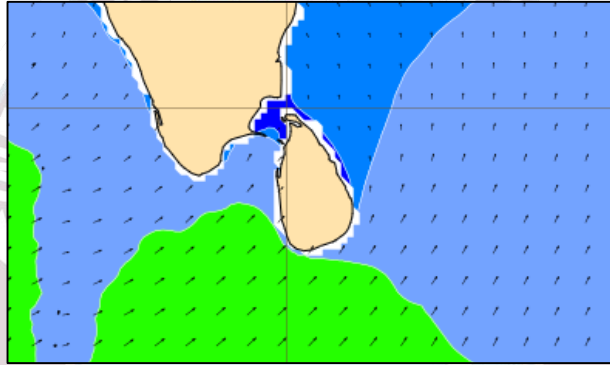
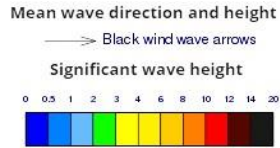
Showers or thundershowers may occur at several places in the sea areas around the island during the afternoon or night. Showers may occur at several places in the sea areas off the coast extending from Colombo to Hambantota via Galle.

Wind speed will be 25-35 kmph in the sea areas around the island. Wind speed can increase up to 45 kmph at times and the sea condition will be fairly rough at times in the sea areas extending from Kankasanthurai to Pottuvil via Colombo and Galle.

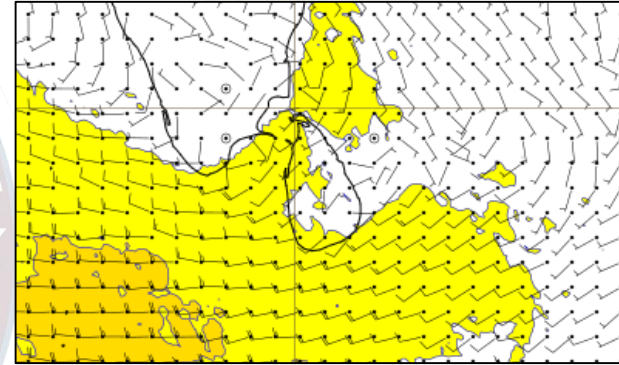
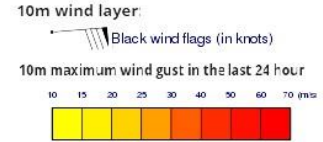
Wind and Rainfall Forecast (Total precipitation for 24 hrs)



Significant wave height (in meters)



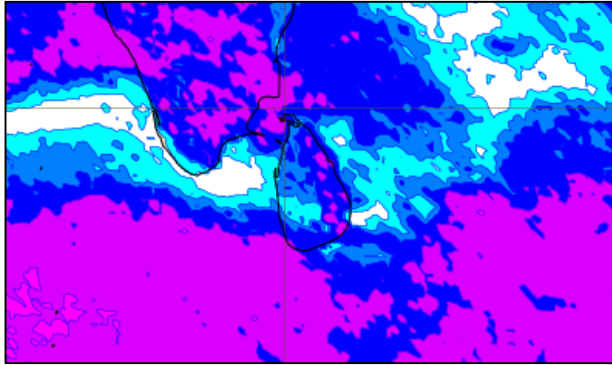
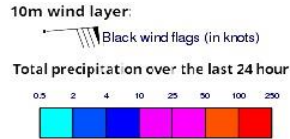
Wind Gust (m/s)



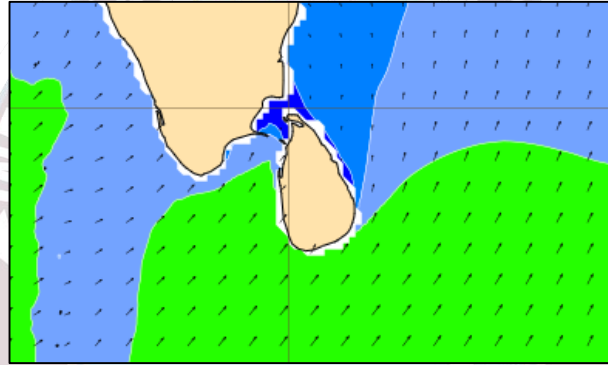
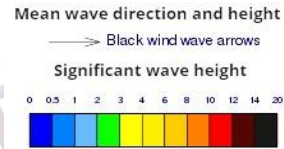
Showers or thundershowers may occur at several places in the sea areas around the island during the afternoon or night. Showers may occur at several places in the sea areas off the coast extending from Colombo to Hambantota via Galle.

Wind speed will be 25-35 kmph in the sea areas around the island. Wind speed can increase up to 45 kmph at times and the sea condition will be fairly rough at times in the sea areas extending from Kankasanthurai to Pottuvil via Colombo and Galle.

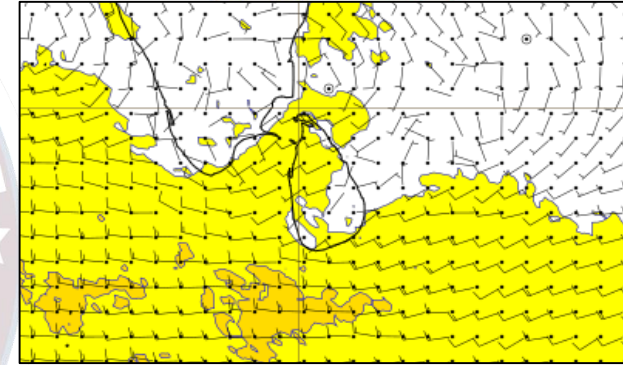
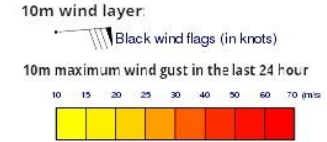
Wind and Rainfall Forecast (Total precipitation for 24 hrs)



Significant wave height (in meters)



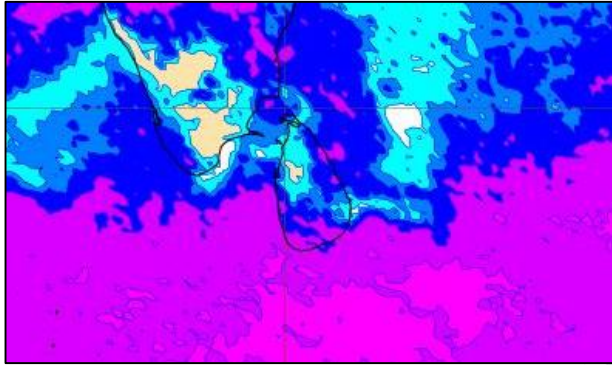
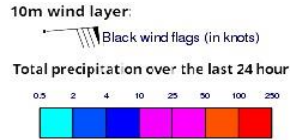
Wind Gust (m/s)



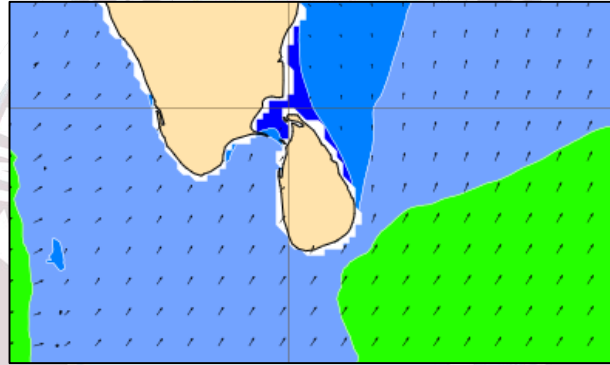
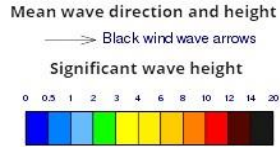
Showers or thundershowers may occur at several places in the sea areas around the island during the afternoon or night. Showers may occur at several places in the sea areas off the coast extending from Colombo to Hambantota via Galle.

Wind speed will be 25-35 kmph in the sea areas around the island. Wind speed can increase up to 45-50 kmph at times and the sea condition will be fairly rough at times in the sea areas extending from Kankasanthurai to Pottuvil via Colombo and Galle.

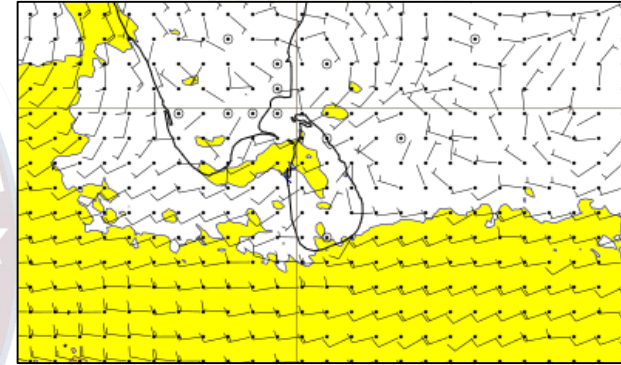
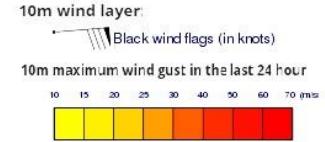
Wind and Rainfall Forecast (Total precipitation for 24 hrs)



Significant wave height (in meters)



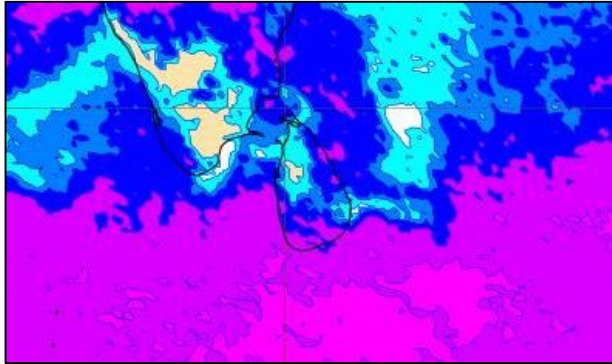
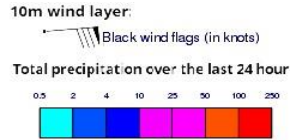
Wind Gust (m/s)



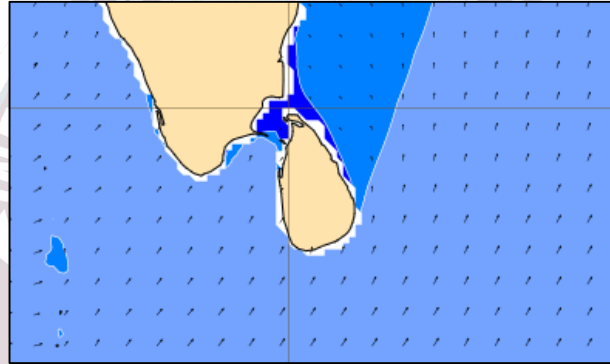
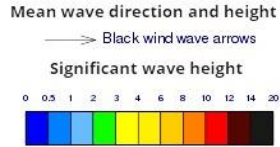
Showers or thundershowers may occur at several places in the sea areas around the island during the afternoon or night. Showers may occur at several places in the sea areas off the coast extending from Colombo to Hambantota via Galle.

Wind speed will be 25-35 kmph in the sea areas around the island. Wind speed can increase up to 45 kmph at times and the sea condition will be fairly rough at times in the sea areas extending from Hambantota to Pottuvil.

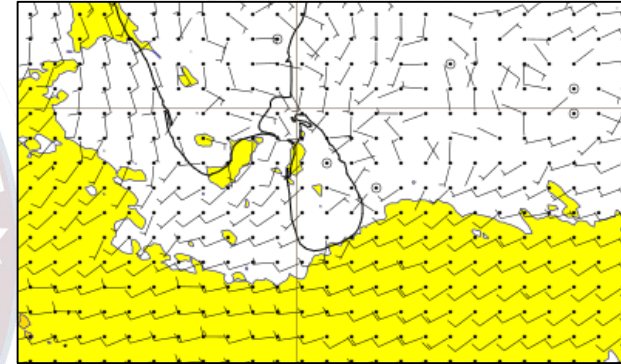
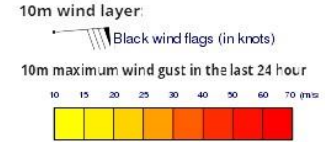
Wind and Rainfall Forecast (Total precipitation for 24 hrs)



Significant wave height (in meters)



Wind Gust (m/s)



Showers or thundershowers may occur at several places in the sea areas around the island during the afternoon or night. Showers may occur at several places in the sea areas off the coast extending from Colombo to Hambantota via Galle.

Wind speed will be 25-35 kmph in the sea areas around the island. Wind speed can increase up to 45 kmph at times and the sea condition will be fairly rough at times in the sea areas extending from Hambantota to Pottuvil.



Thank you!