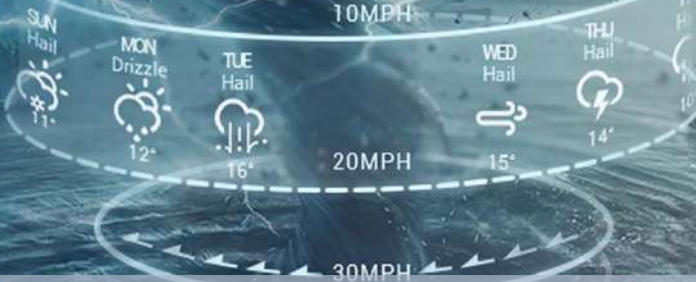


# 08 DAYS WEATHER FORECAST FOR COASTAL AREAS AROUND SRI LANKA


Storm Direction



WARNING

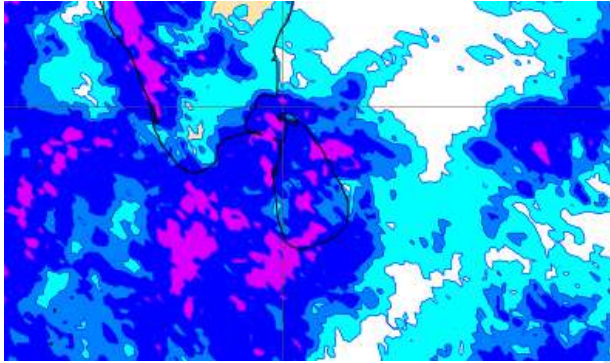
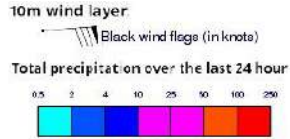


**INFORMATION FUSION CENTRE  
COLOMBO**

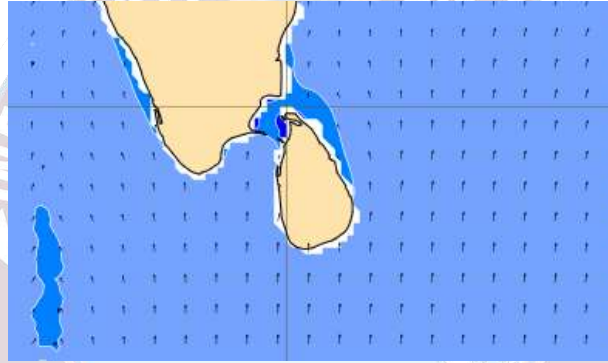
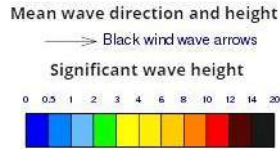


Issued at 0400 a.m. on 30<sup>th</sup> September 2024  
Marine Weather Division, National Meteorological Centre, Department of  
Meteorology, Sri Lanka

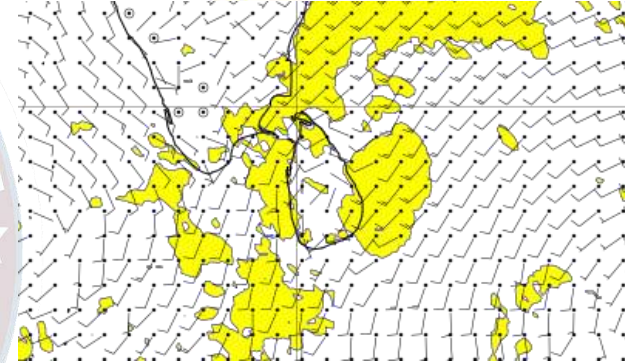
## Wind and Rainfall Forecast (Total precipitation for 24 hrs)



## Significant wave height (in meters)



## Wind Gust (m/s)

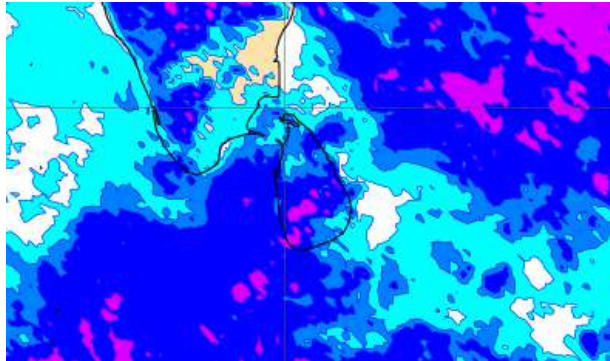
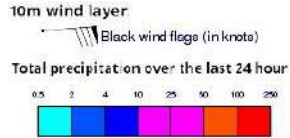


Showers or thundershowers may occur at several places in the sea areas around the island during the afternoon or night. Showers may occur at several places in the sea areas off the coast extending from Galle to Batticaloa via Hambantota and Pottuvil.

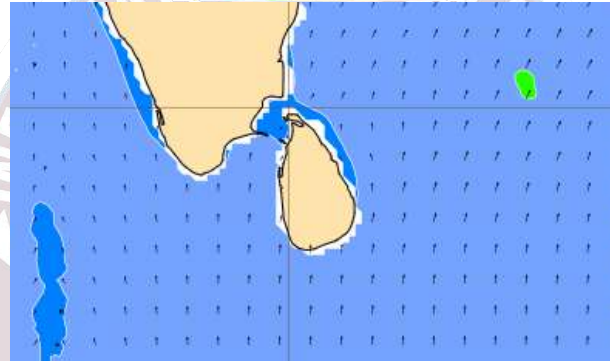
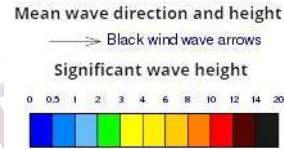
Wind speed will be 25-35 kmph in the sea areas around the island.



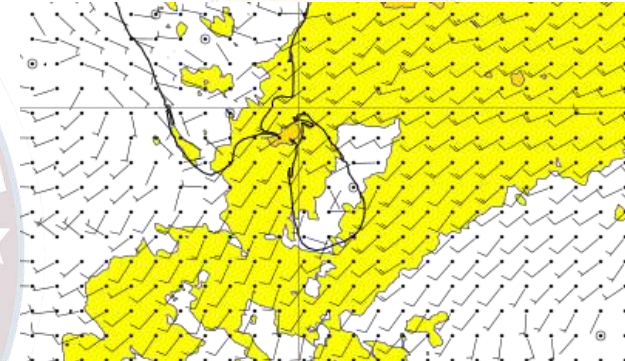
## Wind and Rainfall Forecast (Total precipitation for 24 hrs)



## Significant wave height (in meters)



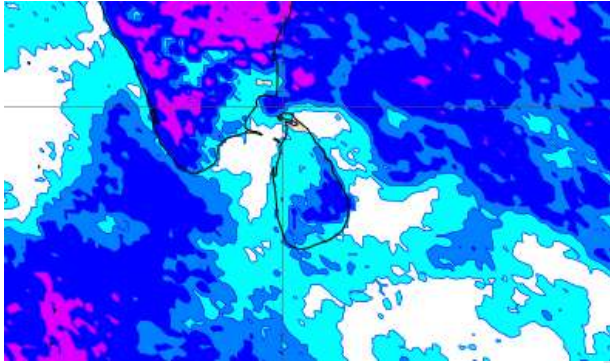
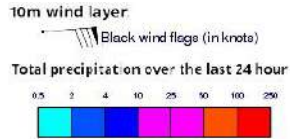
## Wind Gust (m/s)



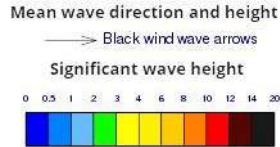
Showers or thundershowers may occur at several places in the sea areas around the island during the afternoon or night. Showers may occur at several places in the sea areas off the coast extending from Galle to Batticaloa via Hambantota and Pottuvil.

Wind speed will be 25-35 kmph in the sea areas around the island.

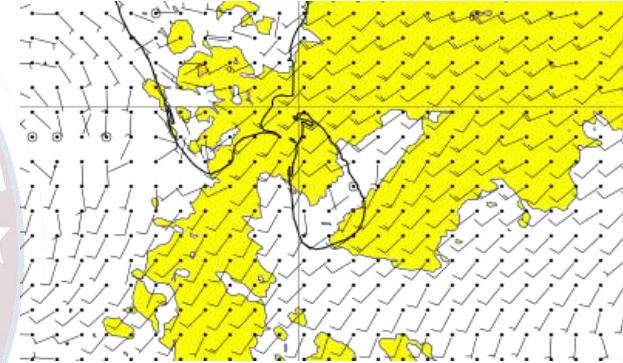
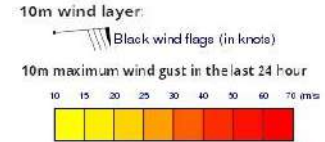
## Wind and Rainfall Forecast (Total precipitation for 24 hrs)



## Significant wave height (in meters)



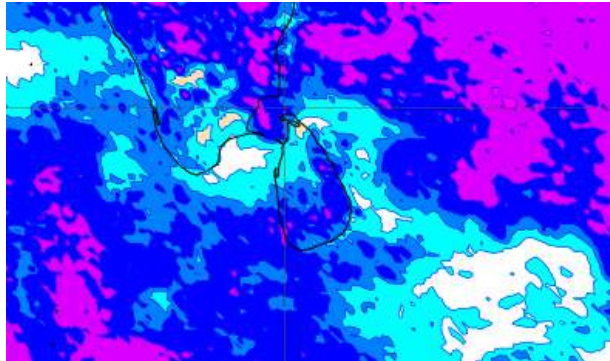
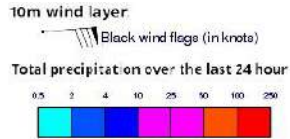
## Wind Gust (m/s)



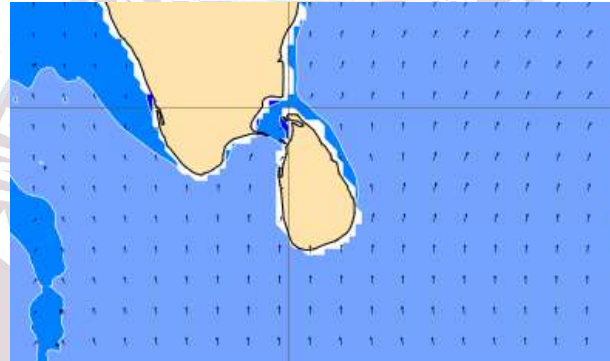
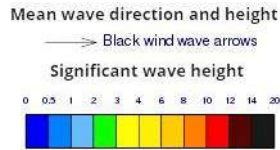
Showers or thundershowers may occur at several places in the sea areas around the island during the afternoon or night. Showers may occur at several places in the sea areas off the coast extending from Galle to Batticaloa via Hambantota and Pottuvil.

Wind speed will be 25-35 kmph in the sea areas around the island. Wind speed can increase up to 45 kmph at times and the sea condition will be fairly rough at times in the sea areas extending from Kankasanturai to Puttalam via Mannar and from Galle to Pottuvil via Hambantota.

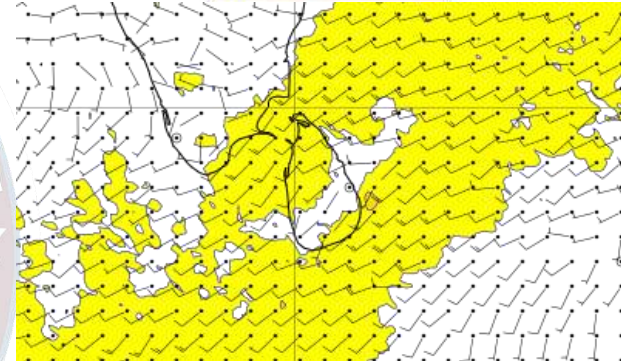
## Wind and Rainfall Forecast (Total precipitation for 24 hrs)



## Significant wave height (in meters)



## Wind Gust (m/s)

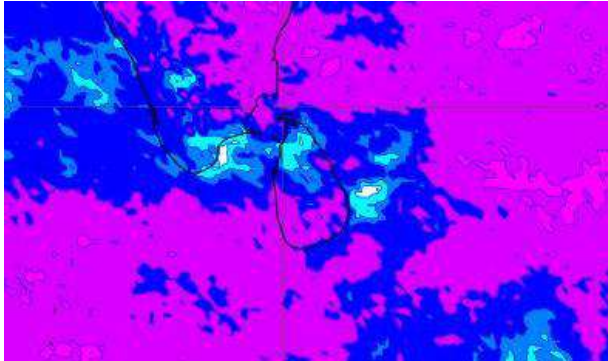
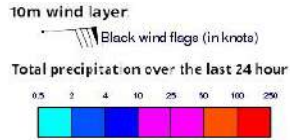


Showers or thundershowers may occur at several places in the sea areas around the island during the afternoon or night. Showers may occur at several places in the sea areas off the coast extending from Galle to Batticaloa via Hambantota and Pottuvil.

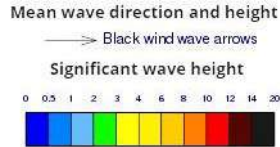
Wind speed will be 25-35 kmph in the sea areas around the island. Wind speed can increase up to 45 kmph at times and the sea condition will be fairly rough at times in the sea areas extending from Kankasanturai to Puttalam via Mannar and from Galle to Pottuvil via Hambantota.



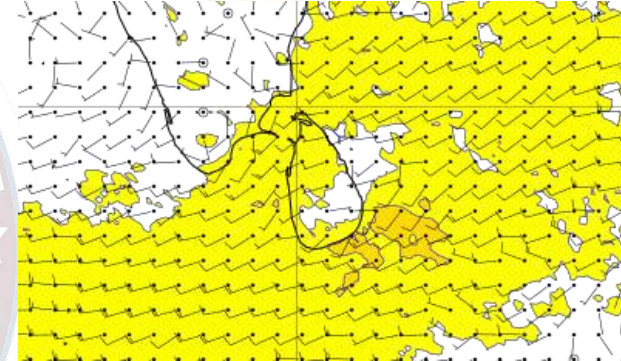
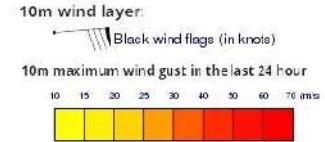
## Wind and Rainfall Forecast (Total precipitation for 24 hrs)



## Significant wave height (in meters)



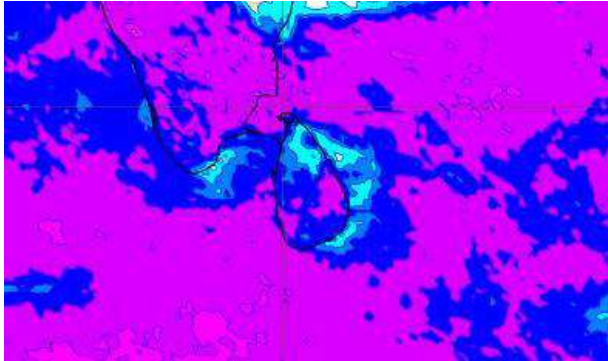
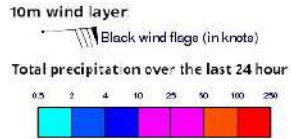
## Wind Gust (m/s)



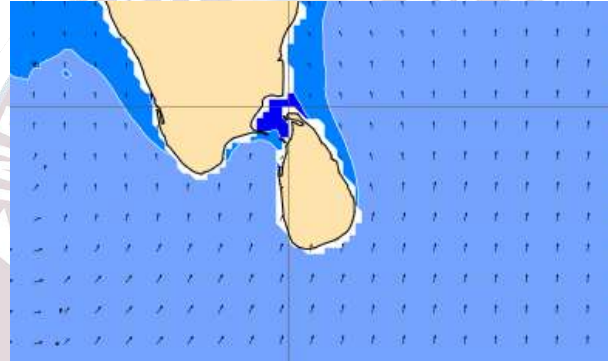
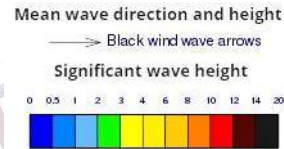
Showers or thundershowers may occur at several places in the sea areas around the island during the afternoon or night. Showers may occur at several places in the sea areas off the coast extending from Galle to Batticaloa via Hambantota and Pottuvil.

Wind speed will be 25-35 kmph in the sea areas around the island. Wind speed can increase up to 45 kmph at times and the sea condition will be fairly rough at times.

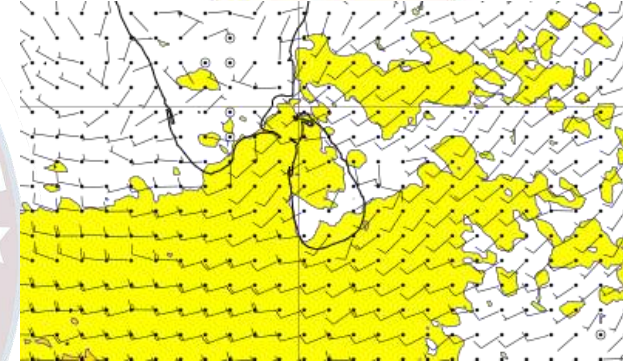
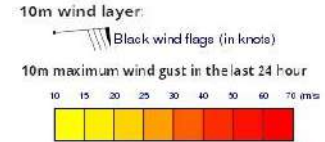
## Wind and Rainfall Forecast (Total precipitation for 24 hrs)



## Significant wave height (in meters)



## Wind Gust (m/s)

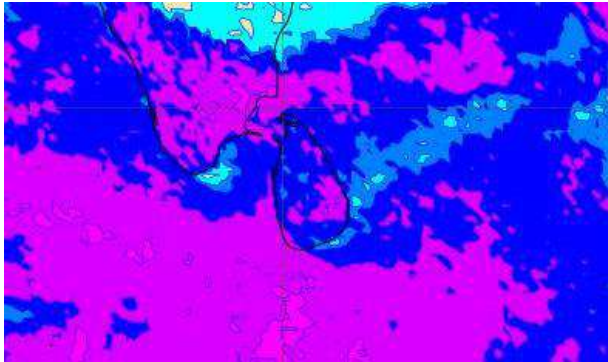
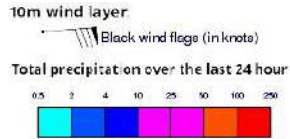


Showers or thundershowers may occur at several places in the sea areas around the island during the afternoon or night. Showers may occur at several places in the sea areas off the coast extending from Galle to Batticaloa via Hambantota and Pottuvil.

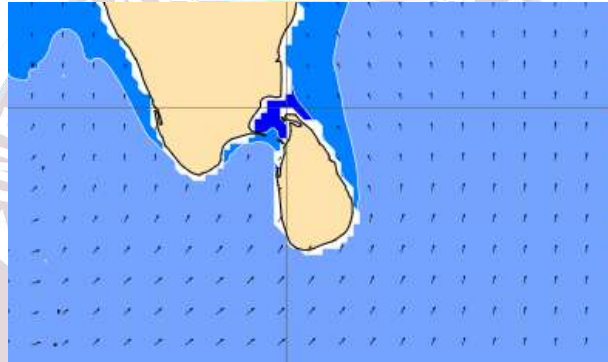
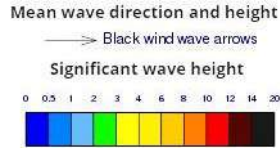
Wind speed will be 25-35 kmph in the sea areas around the island. Wind speed can increase up to 45 kmph at times and the sea condition will be fairly rough at times in the sea areas extending from Kankasanthurai to Pottuvil via Colombo and Galle.



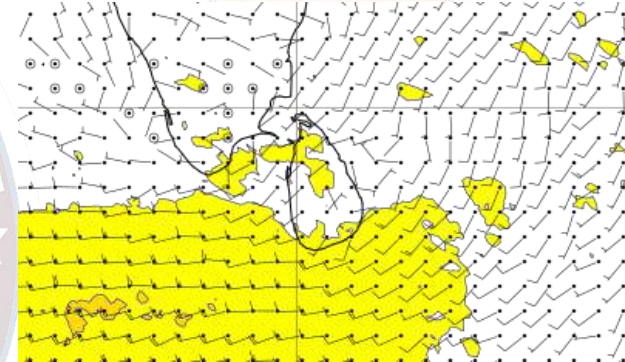
## Wind and Rainfall Forecast (Total precipitation for 24 hrs)



## Significant wave height (in meters)



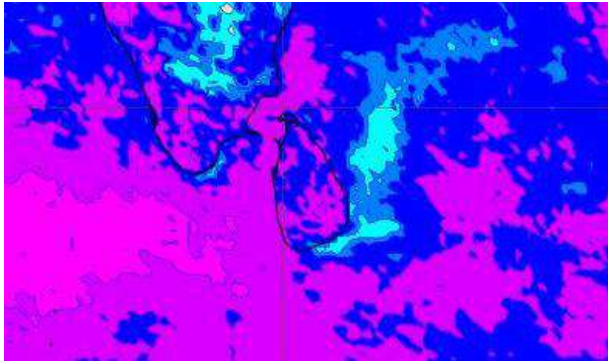
## Wind Gust (m/s)



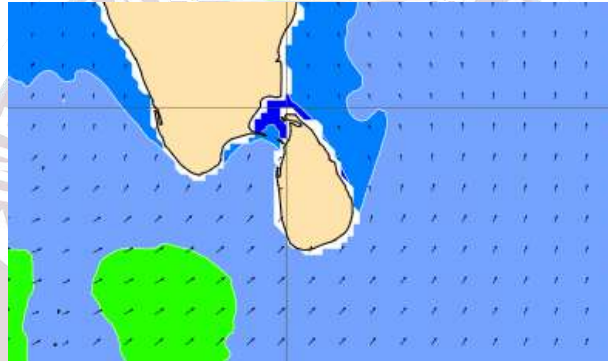
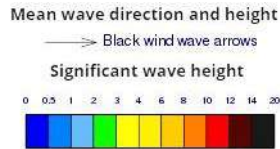
Showers or thundershowers may occur at several places in the sea areas around the island during the afternoon or night. Showers may occur at several places in the sea areas off the coast extending from Galle to Batticaloa via Hambantota and Pottuvil.

Wind speed will be 25-35 kmph in the sea areas around the island. Wind speed can increase up to 45 kmph at times and the sea condition will be fairly rough at times in the sea areas extending from Kankasanthurai to Pottuvil via Colombo and Galle.

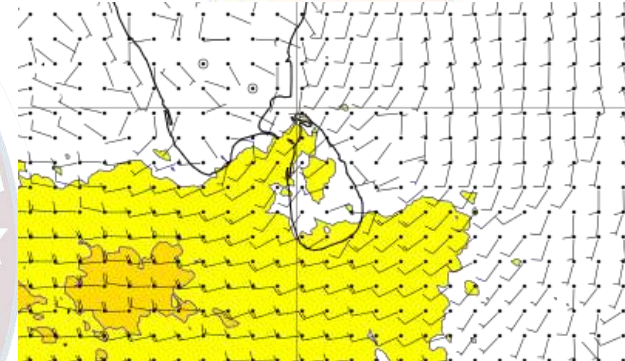
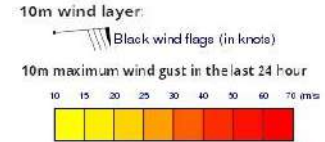
## Wind and Rainfall Forecast (Total precipitation for 24 hrs)



## Significant wave height (in meters)



## Wind Gust (m/s)



Showers or thundershowers may occur at several places in the sea areas around the island during the afternoon or night. Showers may occur at several places in the sea areas off the coast extending from Galle to Batticaloa via Hambantota and Pottuvil.

Wind speed will be 25-35 kmph in the sea areas around the island. Wind speed can increase up to 45 kmph at times and the sea condition will be fairly rough at times in the sea areas extending from Kankasanthurai to Pottuvil via Colombo and Galle.



Thank you!