

07 DAYS WEATHER FORECAST FOR COASTAL AREAS AROUND SRI LANKA


Storm Direction



WARNING

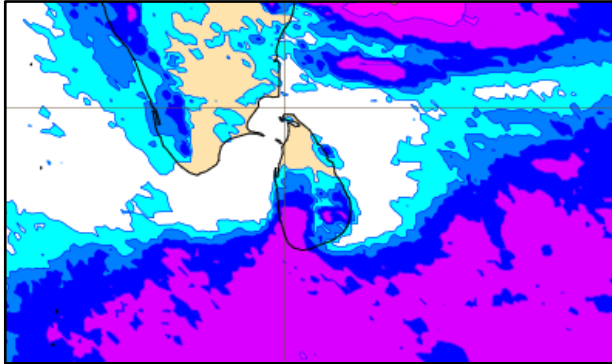
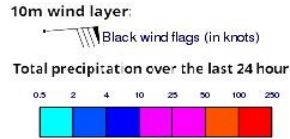


**INFORMATION FUSION CENTRE
COLOMBO**

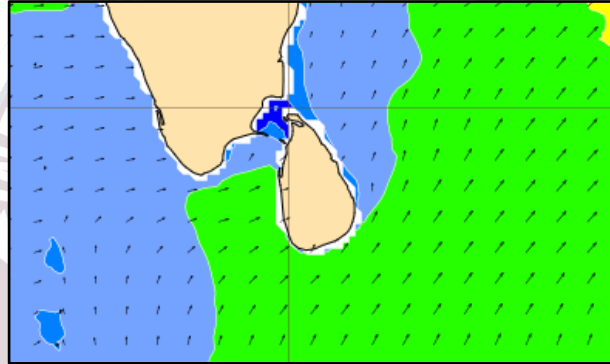
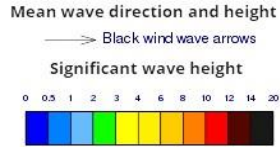


Issued at 0400 a.m. on 04th September 2024
Marine Weather Division, National Meteorological Centre, Department of
Meteorology, Sri Lanka

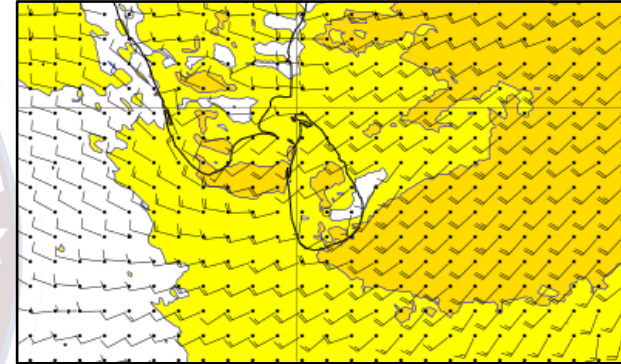
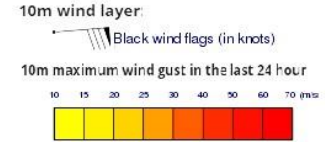
Wind and Rainfall Forecast (Total precipitation for 24 hrs)



Significant wave height (in meters)



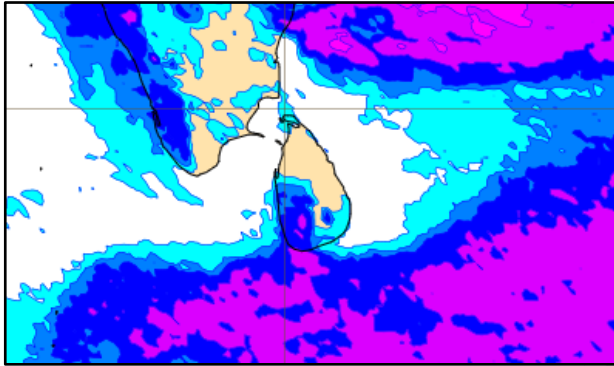
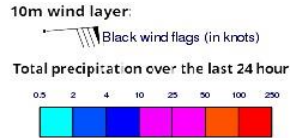
Wind Gust (m/s)



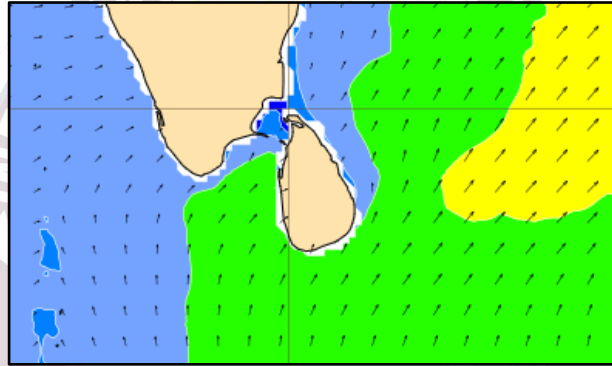
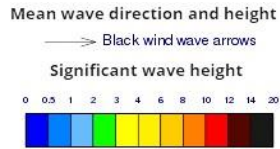
Showers or thundershowers will occur at several places in the sea areas extending from Puttalam to Galle via Colombo. Showers or thundershowers will occur at a few places in the other sea areas around the island.

Wind speed will be 30-40 kmph in the sea areas around the island. Wind speed can increase up to 60 kmph at times and the sea condition will be very rough at times in the sea areas extending from Kankasanturai to Chilaw via Puttalam and from Galle to Pottuvil via Hambantota to. Wind speed can increase up to 45-50 kmph at times and the sea condition will be fairly rough at times in the sea areas extending from Puttalam to Galle via Colombo and from Trincomalee to Kankasanturai via Mullaitivu.

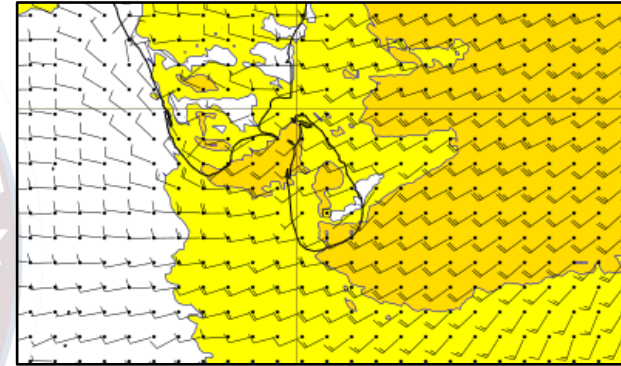
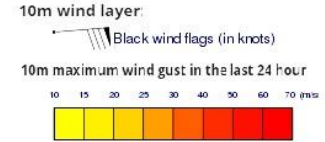
Wind and Rainfall Forecast (Total precipitation for 24 hrs)



Significant wave height (in meters)



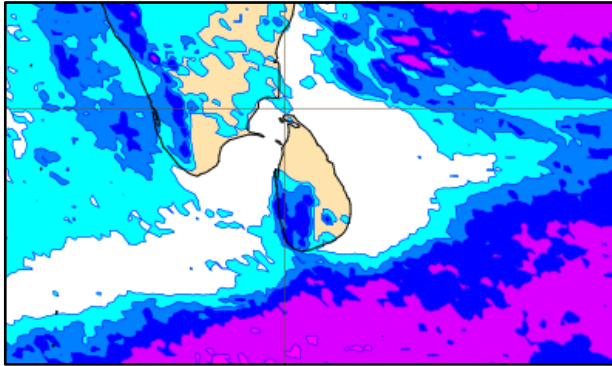
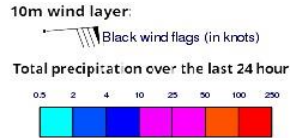
Wind Gust (m/s)



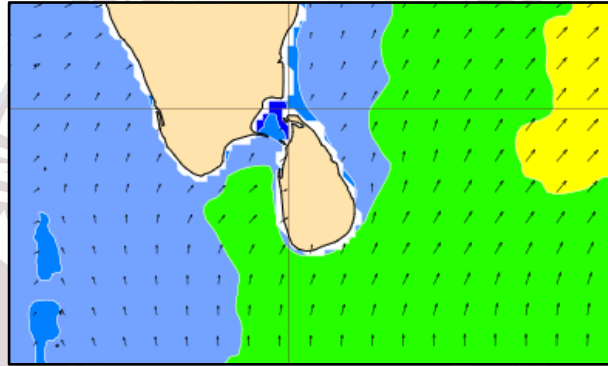
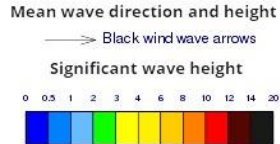
Showers or thundershowers will occur at several places in the sea areas extending from Puttalam to Galle via Colombo. Showers or thundershowers will occur at a few places in the other sea areas around the island.

Wind speed will be 30-40 kmph in the sea areas around the island. Wind speed can increase up to 60 kmph at times and the sea condition will be very rough at times in the sea areas extending from Kankasanturai to Chilaw via Puttalam and from Galle to Pottuvil via Hambantota to. Wind speed can increase up to 45-50 kmph at times and the sea condition will be fairly rough at times in the sea areas extending from Puttalam to Galle via Colombo and from Trincomalee to Kankasanturai via Mullaitivu.

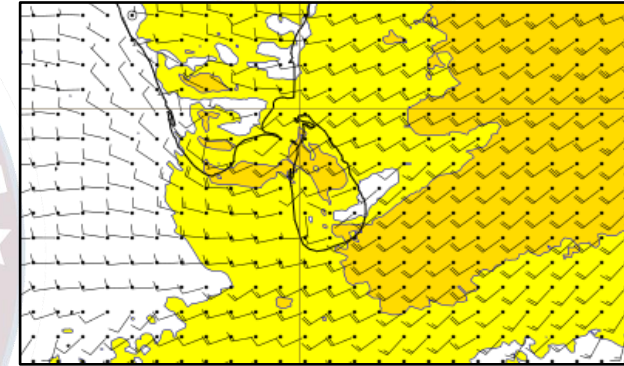
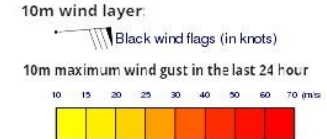
Wind and Rainfall Forecast (Total precipitation for 24 hrs)



Significant wave height (in meters)



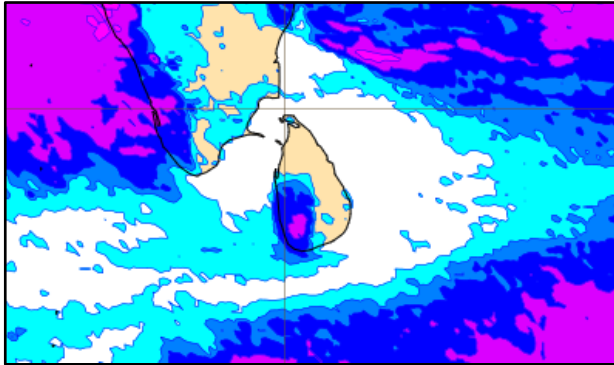
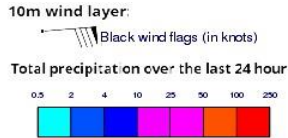
Wind Gust (m/s)



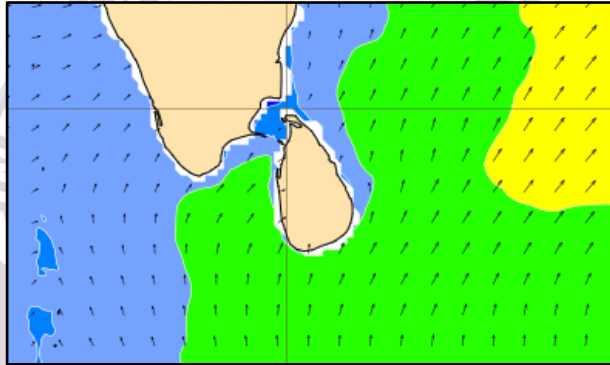
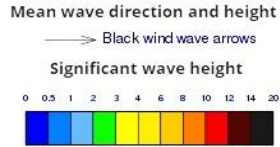
Showers or thundershowers will occur at several places in the sea areas extending from Puttalam to Galle via Colombo. Showers or thundershowers will occur at a few places in the other sea areas around the island.

Wind speed will be 30-40 kmph in the sea areas around the island. Wind speed can increase up to 60 kmph at times and the sea condition will be very rough at times in the sea areas extending from Kankasanturai to Chilaw via Puttalam and from Galle to Pottuvil via Hambantota to. Wind speed can increase up to 45-50 kmph at times and the sea condition will be fairly rough at times in the sea areas extending from Puttalam to Galle via Colombo and from Trincomalee to Kankasanturai via Mullaitivu.

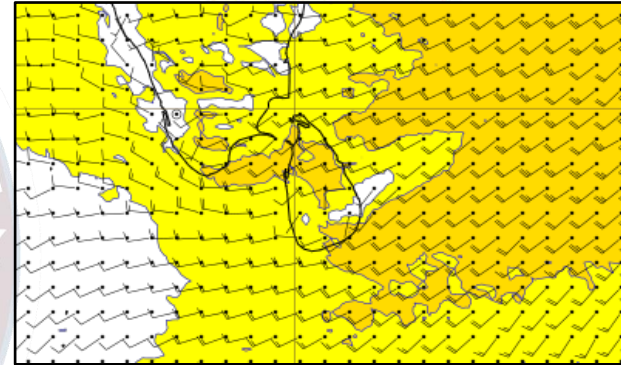
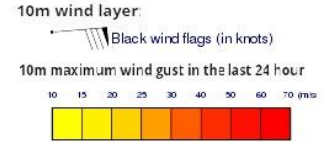
Wind and Rainfall Forecast (Total precipitation for 24 hrs)



Significant wave height (in meters)



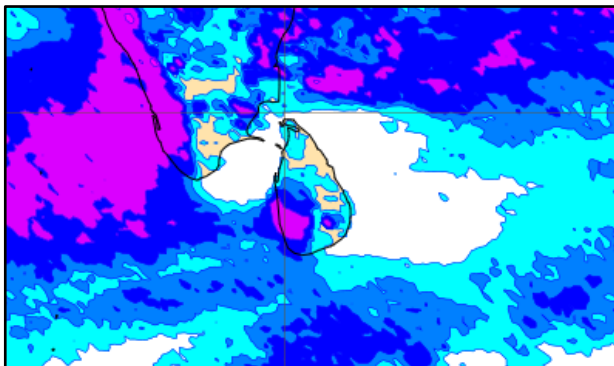
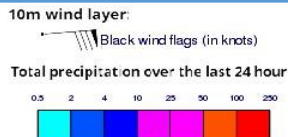
Wind Gust (m/s)



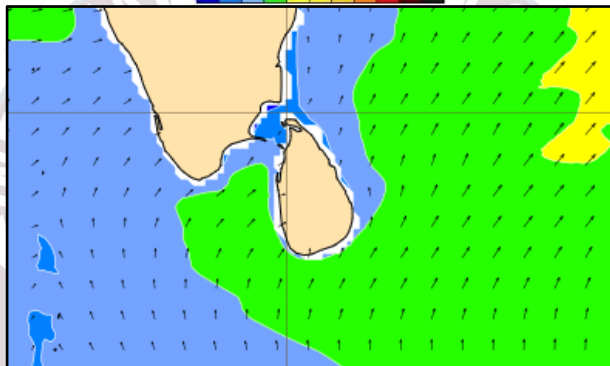
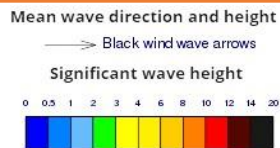
Showers or thundershowers will occur at several places in the sea areas extending from Puttalam to Galle via Colombo. Showers or thundershowers will occur at a few places in the other sea areas around the island.

Wind speed will be 30-40 kmph in the sea areas around the island. Wind speed can increase up to 60 kmph at times and the sea condition will be very rough at times in the sea areas extending from Kankasanturai to Chilaw via Puttalam and from Galle to Pottuvil via Hambantota to. Wind speed can increase up to 50 kmph at times and the sea condition will be rough at times in the sea areas extending from Puttalam to Galle via Colombo and from Trincomalee to Kankasanturai via Mullaitivu.

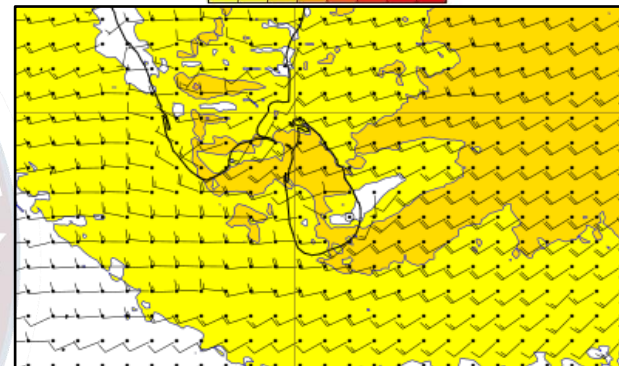
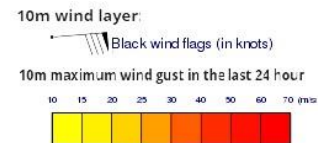
Wind and Rainfall Forecast (Total precipitation for 24 hrs)



Significant wave height (in meters)



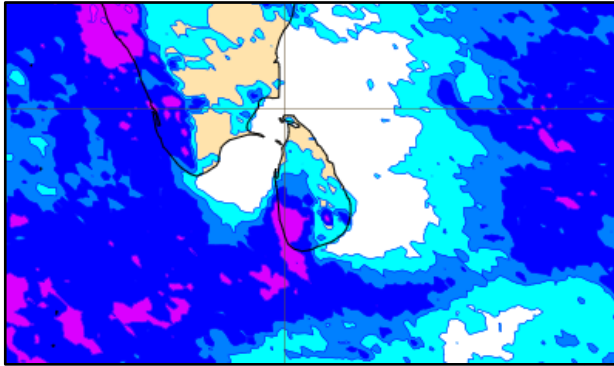
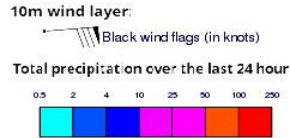
Wind Gust (m/s)



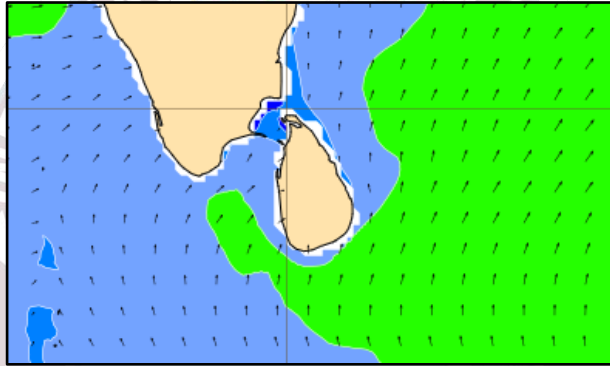
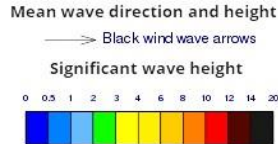
Showers or thundershowers will occur at several places in the sea areas extending from Puttalam to Galle via Colombo. Showers or thundershowers will occur at a few places in the other sea areas around the island.

Wind speed will be 30-40 kmph in the sea areas around the island. Wind speed can increase up to 60 kmph at times and the sea condition will be very rough at times in the sea areas extending from Kankasanturai to Chilaw via Puttalam and from Galle to Pottuvil via Hambantota to. Wind speed can increase up to 50 kmph at times and the sea condition will be rough at times in the sea areas extending from Puttalam to Galle via Colombo and from Trincomalee to Kankasanturai via Mullaitivu.

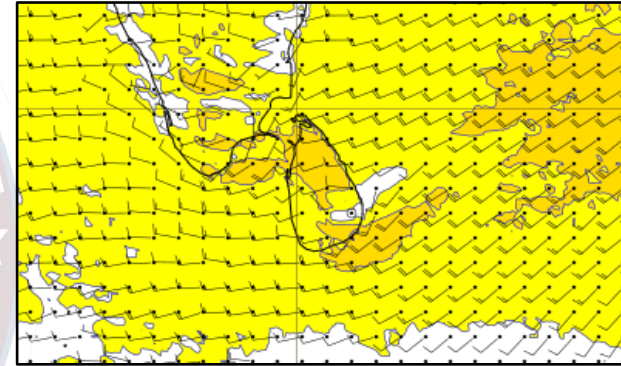
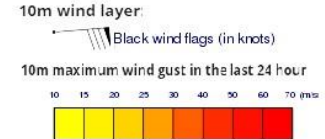
Wind and Rainfall Forecast (Total precipitation for 24 hrs)



Significant wave height (in meters)



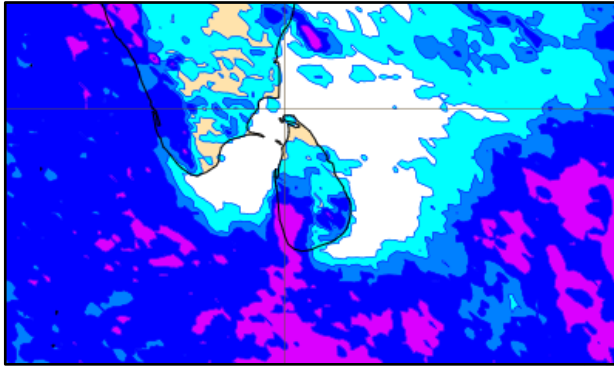
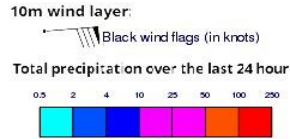
Wind Gust (m/s)



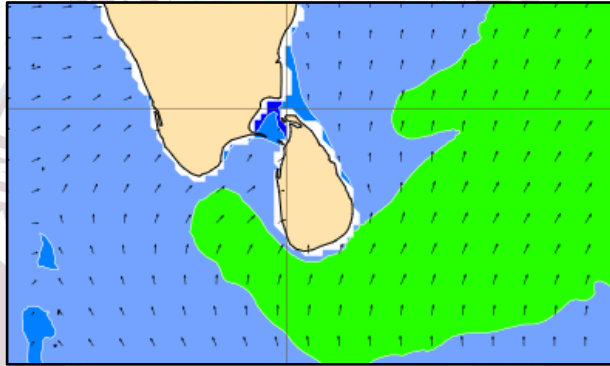
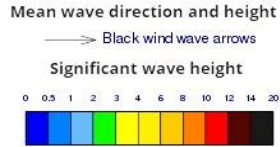
Showers or thundershowers will occur at several places in the sea areas extending from Puttalam to Hambantota to via Colombo and Galle. Showers or thundershowers will occur at a few places in the other sea areas around the island.

Wind speed will be 30-40 kmph in the sea areas around the island. Wind speed can increase up to 60 kmph at times and the sea condition will be very rough at times in the sea areas extending from Kankasanturai to Chilaw via Puttalam and from Galle to Pottuvil via Hambantota to. Wind speed can increase up to 45-50 kmph at times and the sea condition will be fairly rough at times in the sea areas extending from Puttalam to Galle via Colombo and from Trincomalee to Kankasanturai via Mullaitivu.

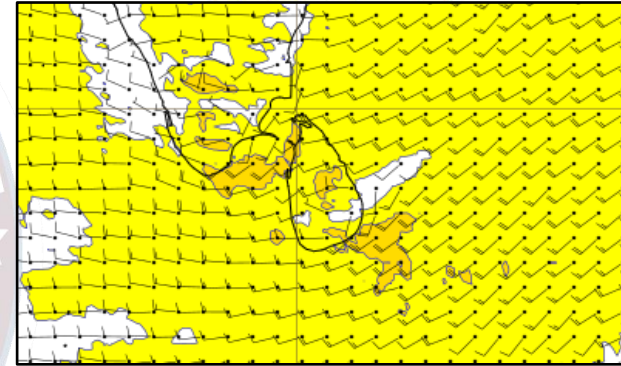
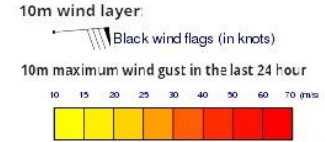
Wind and Rainfall Forecast (Total precipitation for 24 hrs)



Significant wave height (in meters)



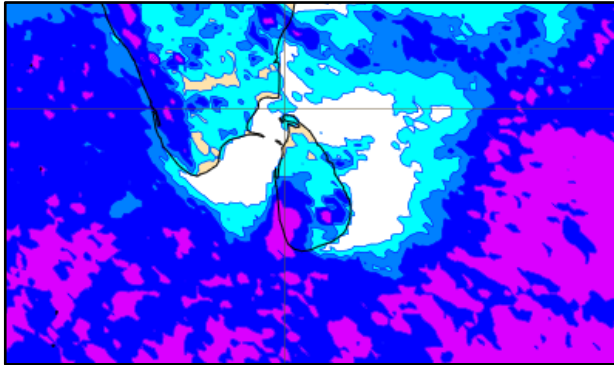
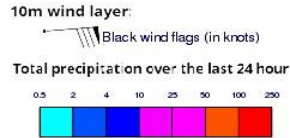
Wind Gust (m/s)



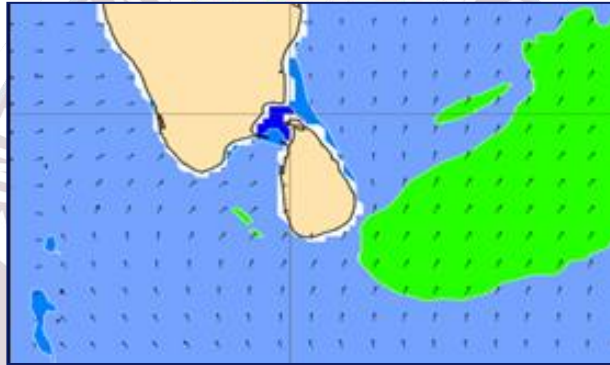
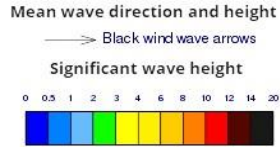
Showers or thundershowers will occur at several places in the sea areas extending from Puttalam to Galle via Colombo. Showers or thundershowers will occur at a few places in the other sea areas around the island.

Wind speed will be 30-40 kmph in the sea areas around the island. Wind speed can increase up to 60 kmph at times and the sea condition will be very rough at times in the sea areas extending from Kankasanturai to Chilaw via Puttalam and from Galle to Pottuvil via Hambantota to. Wind speed can increase up to 45-50 kmph at times and the sea condition will be fairly rough at times in the sea areas extending from Puttalam to Galle via Colombo and from Trincomalee to Kankasanturai via Mullaitivu.

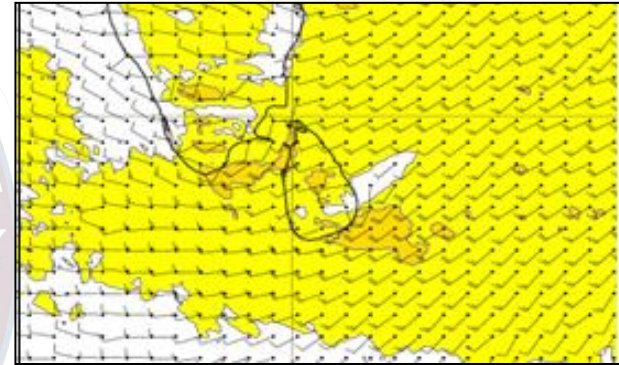
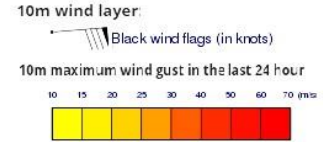
Wind and Rainfall Forecast (Total precipitation for 24 hrs)



Significant wave height (in meters)



Wind Gust (m/s)



Showers or thundershowers will occur at several places in the sea areas extending from Puttalam to Hambantota to via Colombo and Galle. Showers or thundershowers will occur at a few places in the other sea areas around the island.

Wind speed will be 30-40 kmph in the sea areas around the island. Wind speed can increase up to 60 kmph at times and the sea condition will be very rough at times in the sea areas extending from Kankasanturai to Chilaw via Puttalam and from Galle to Pottuvil via Hambantota to. Wind speed can increase up to 45-50 kmph at times and the sea condition will be fairly rough at times in the sea areas extending from Puttalam to Galle via Colombo and from Trincomalee to Kankasanturai via Mullaitivu.



Thank you!