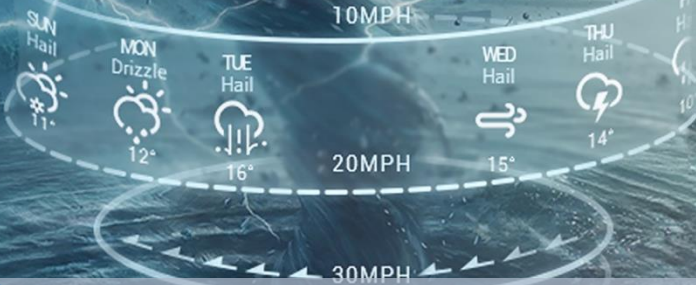


08 DAYS WEATHER FORECAST FOR COASTAL AREAS AROUND SRI LANKA


Storm Direction



WARNING

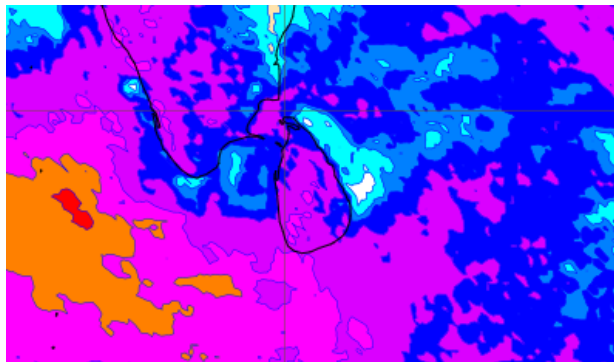
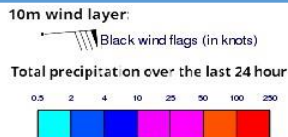


**INFORMATION FUSION CENTRE
COLOMBO**

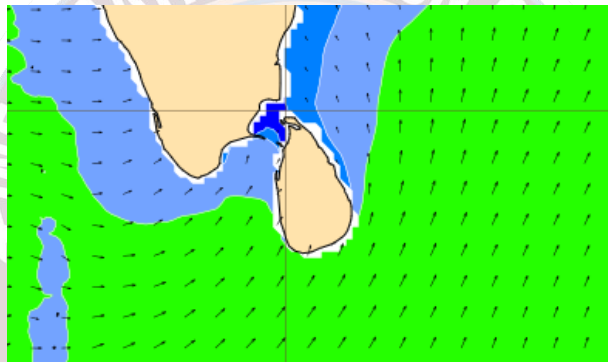
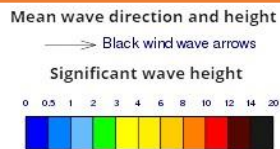


Issued at 04.00 a.m. on 12th August 2024
Marine Weather Division, National Meteorological Centre, Department of
Meteorology, Sri Lanka

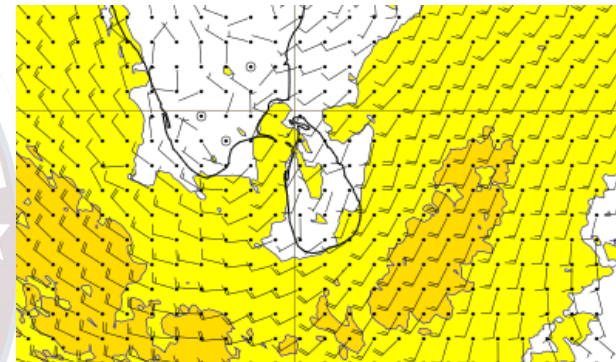
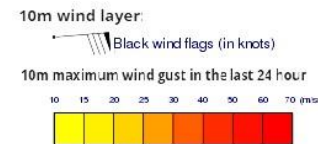
Wind and Rainfall Forecast (Total precipitation for 24 hrs)



Significant wave height (in meters)



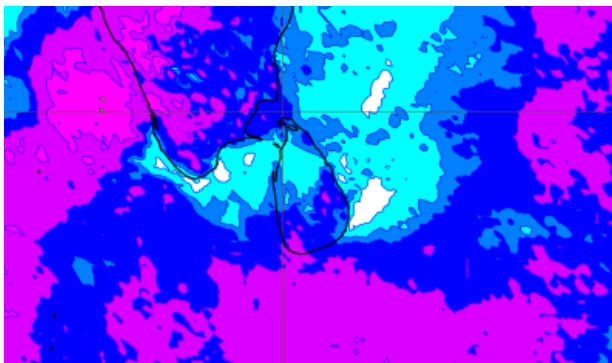
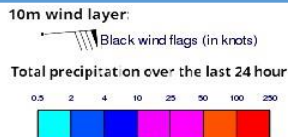
Wind Gust (m/s)



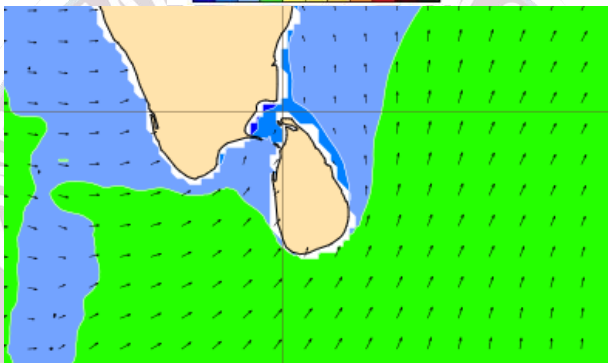
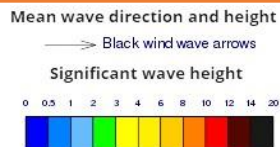
Showers or thundershowers will occur at several places in the sea areas around the island in the evening or night. Showers will occur in the sea areas extending from Colombo to Hambantota via Galle in the morning..

Wind speed will be 30-40 kmph in the sea areas around the island. Wind speed can increase up to 50 kmph at times and the sea condition will be rough at times in these sea areas extending from Galle to Batticaloa via Hambantota.

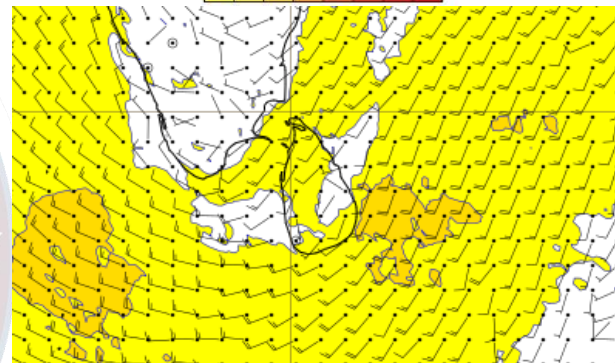
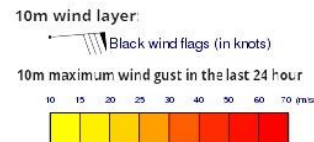
Wind and Rainfall Forecast (Total precipitation for 24 hrs)



Significant wave height (in meters)



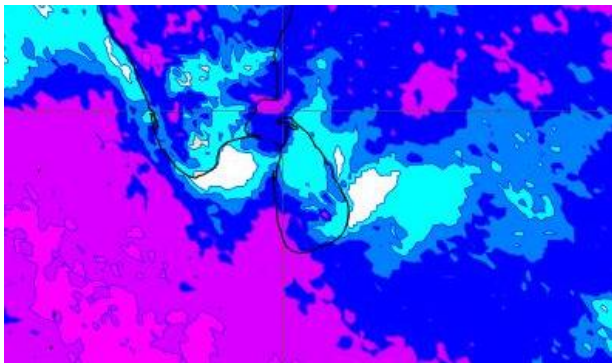
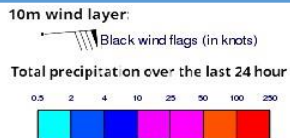
Wind Gust (m/s)



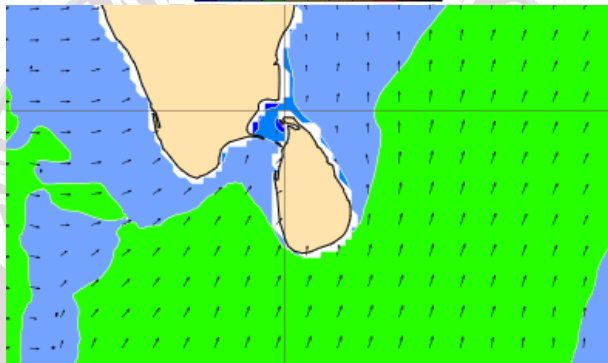
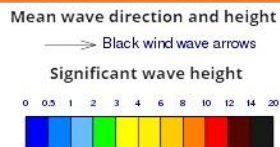
Showers or thundershowers will occur at several places in the sea areas around the island in the evening or night. Showers will occur in the sea areas extending from Colombo to Hambantota via Galle in the morning.

Wind speed will be 30-40 kmph in the sea areas around the island. Wind speed can increase up to 50 kmph at times and the sea condition will be rough at times in these sea areas extending from Galle to Batticaloa via Hambantota.

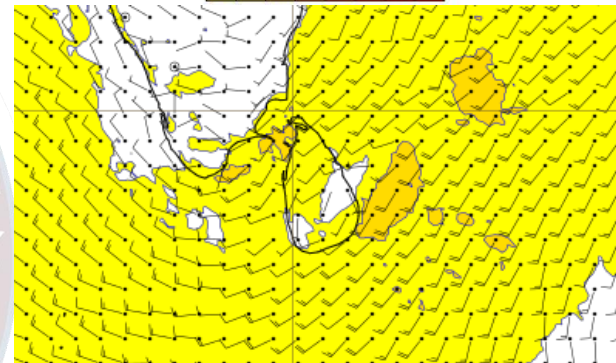
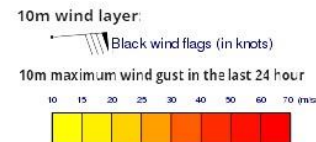
Wind and Rainfall Forecast (Total precipitation for 24 hrs)



Significant wave height (in meters)



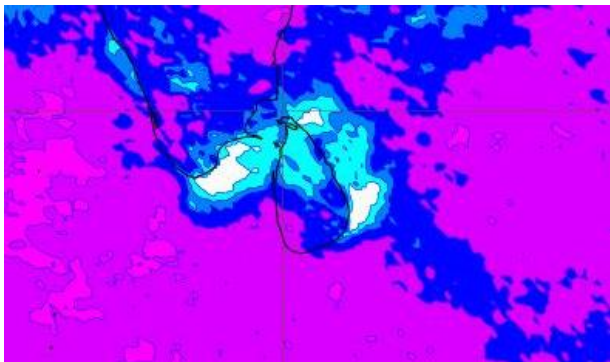
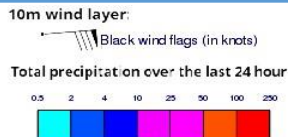
Wind Gust (m/s)



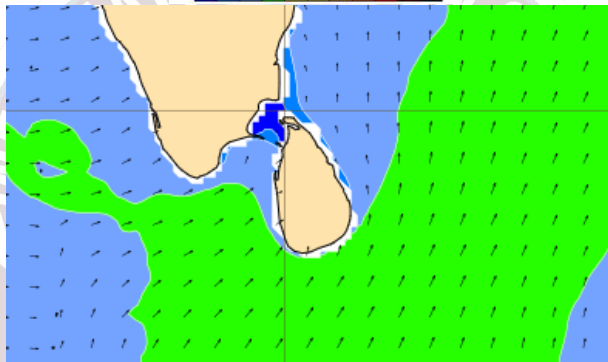
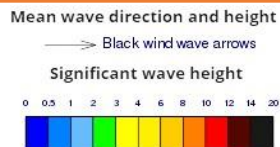
Showers or thundershowers will occur at several places in the sea areas around the island in the evening or night. Showers will occur in the sea areas extending from Colombo to Hambantota via Galle in the morning.

Wind speed will be 30-40 kmph in the sea areas around the island. Wind speed can increase up to 50 kmph at times and the sea condition will be rough at times in these sea areas extending from Kankasanturai to Puttalam via Mannar and from Galle to Batticaloa via Hambantota.

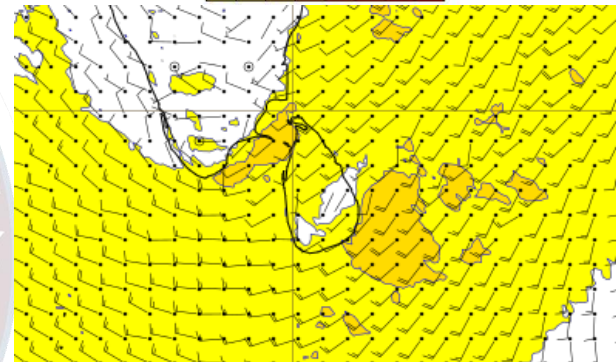
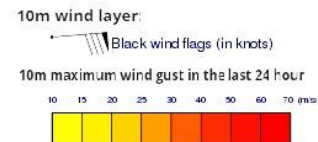
Wind and Rainfall Forecast (Total precipitation for 24 hrs)



Significant wave height (in meters)



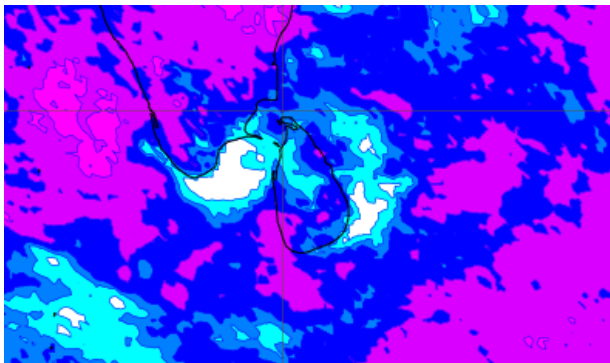
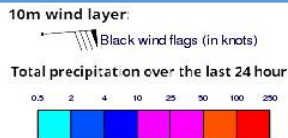
Wind Gust (m/s)



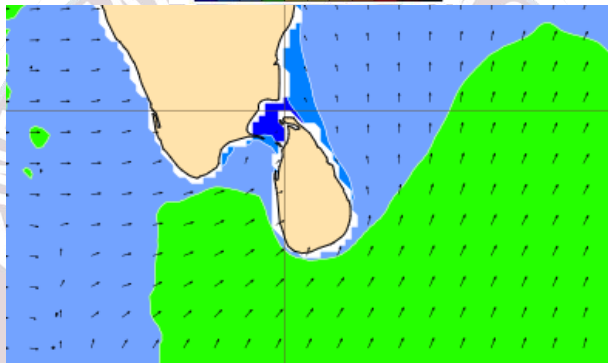
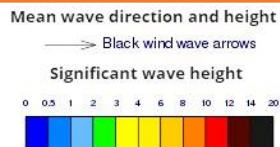
Showers or thundershowers will occur at several places in the sea areas around the island in the evening or night. Showers will occur in the sea areas extending from Colombo to Hambantota via Galle in the morning.

Wind speed will be 30-40 kmph in the sea areas around the island. Wind speed can increase up to 50 kmph at times and the sea condition will be rough at times in these sea areas extending from Kankasanturai to Puttalam via Mannar and from Galle to Batticaloa via Hambantota.

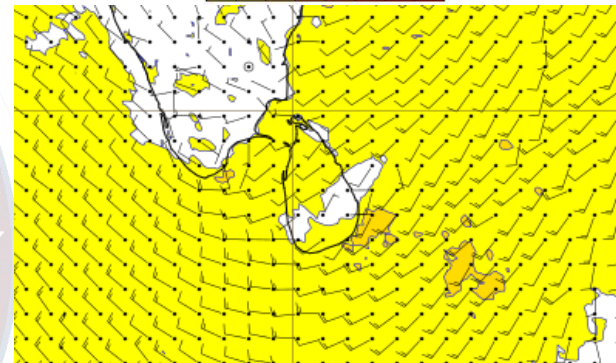
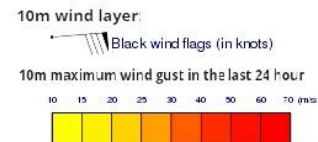
Wind and Rainfall Forecast (Total precipitation for 24 hrs)



Significant wave height (in meters)



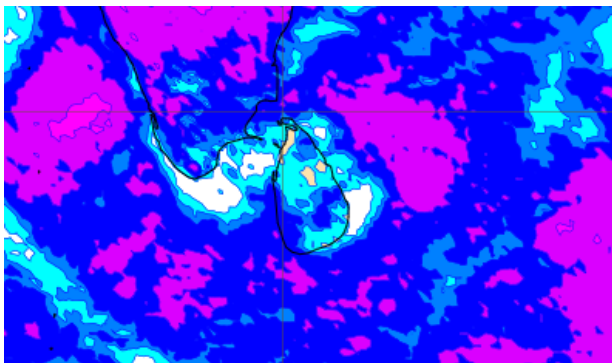
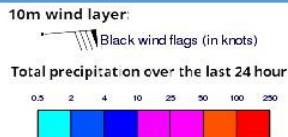
Wind Gust (m/s)



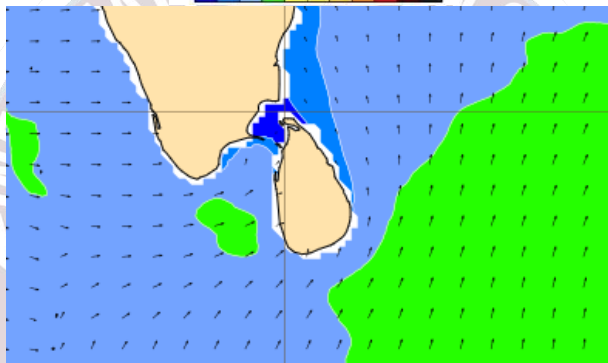
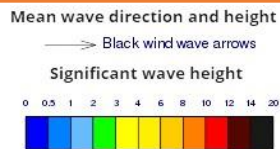
Showers or thundershowers will occur at several places in the sea areas around the island in the evening or night. Showers will occur in the sea areas extending from Colombo to Hambantota via Galle in the morning.

Wind speed will be 30-40 kmph in the sea areas around the island. Wind speed can increase up to 50 kmph at times and the sea condition will be rough at times in these sea areas extending from Kankasanturai to Puttalam via Mannar and from Galle to Batticaloa via Hambantota.

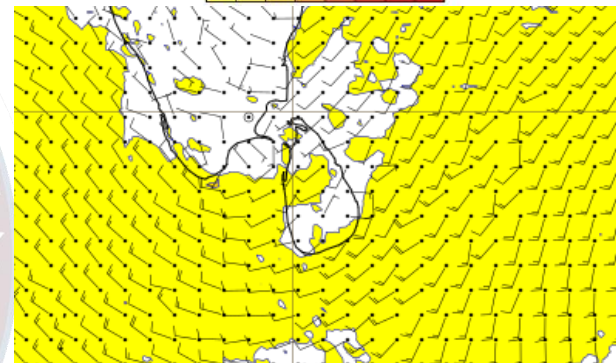
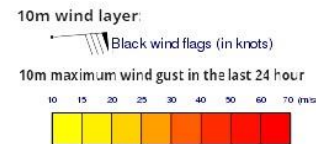
Wind and Rainfall Forecast (Total precipitation for 24 hrs)



Significant wave height (in meters)



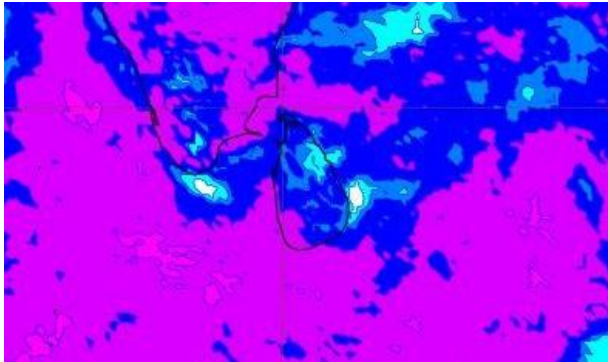
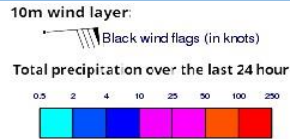
Wind Gust (m/s)



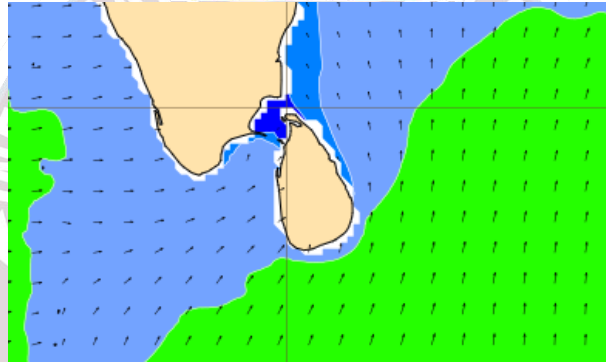
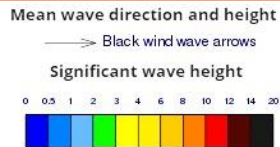
Showers or thundershowers will occur at several places in the sea areas around the island in the evening or night. Showers will occur in the sea areas extending from Colombo to Hambantota via Galle in the morning.

Wind speed will be 30-40 kmph in the sea areas around the island. Wind speed can increase up to 50 kmph at times and the sea condition will be rough at times in these sea areas extending from Kankasanturai to Puttalam via Mannar and from Galle to Batticaloa via Hambantota.

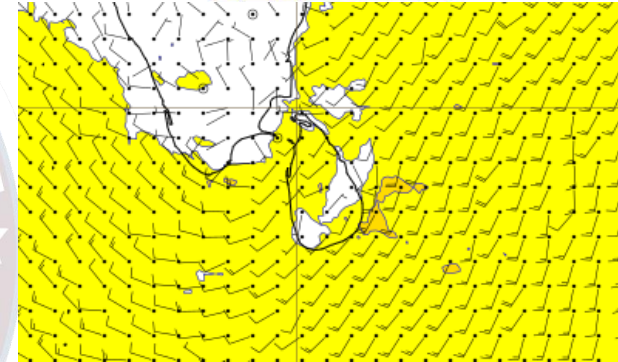
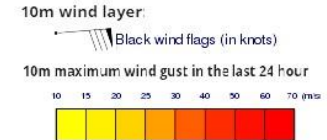
Wind and Rainfall Forecast (Total precipitation for 24 hrs)



Significant wave height (in meters)



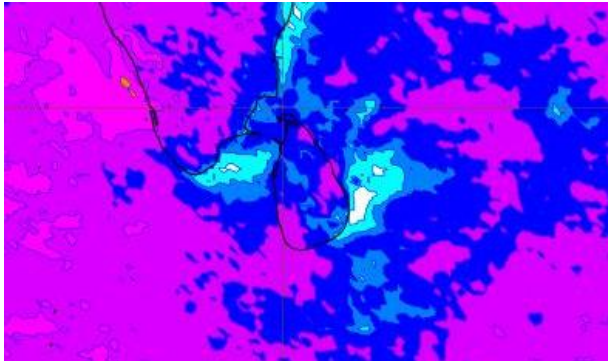
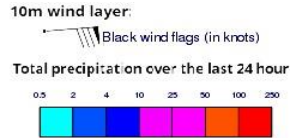
Wind Gust (m/s)



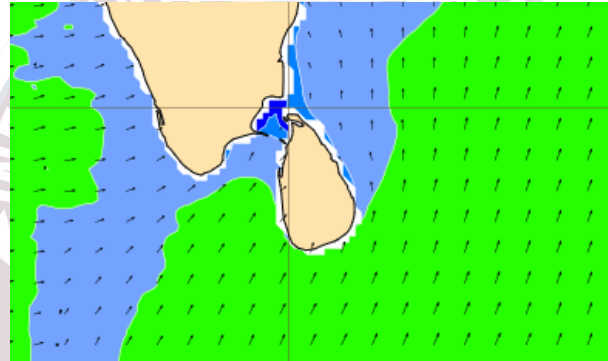
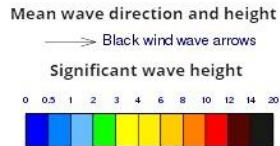
Showers or thundershowers will occur at several places in the sea areas around the island in the evening or night. Showers will occur in the sea areas extending from Colombo to Hambantota via Galle in the morning.

Wind speed will be 30-40 kmph in the sea areas around the island. Wind speed can increase up to 50 kmph at times and the sea condition will be rough at times in these sea areas extending from Kankasanturai to Puttalam via Mannar and from Galle to Batticaloa via Hambantota.

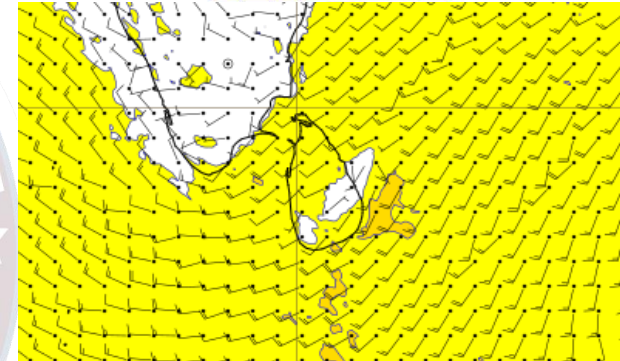
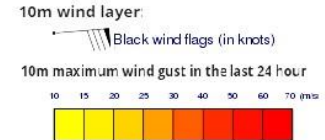
Wind and Rainfall Forecast (Total precipitation for 24 hrs)



Significant wave height (in meters)



Wind Gust (m/s)



Showers or thundershowers will occur at several places in the sea areas around the island in the evening or night. Showers will occur in the sea areas extending from Colombo to Hambantota via Galle in the morning.

Wind speed will be 30-40 kmph in the sea areas around the island. Wind speed can increase up to 50 kmph at times and the sea condition will be rough at times in these sea areas extending from Kankasanturai to Puttalam via Mannar and from Galle to Batticaloa via Hambantota.



Thank you!