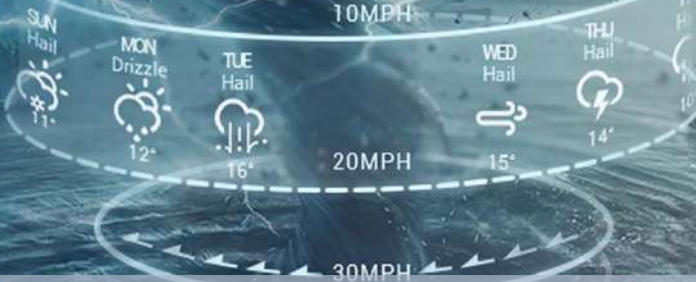


# 08 DAYS WEATHER FORECAST FOR COASTAL AREAS AROUND SRI LANKA

Storm Direction




WARNING



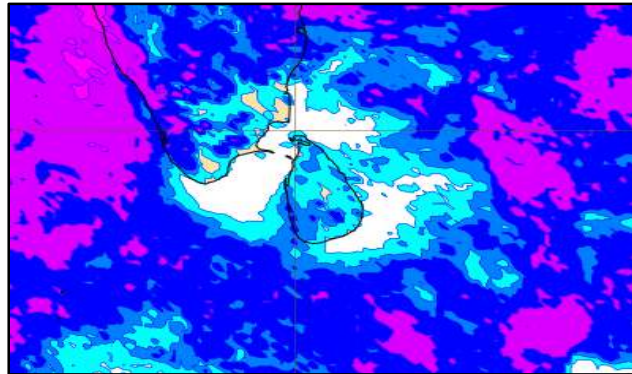
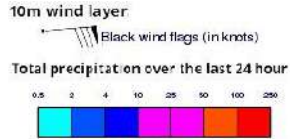
**INFORMATION FUSION CENTRE  
COLOMBO**

Know weather before it can

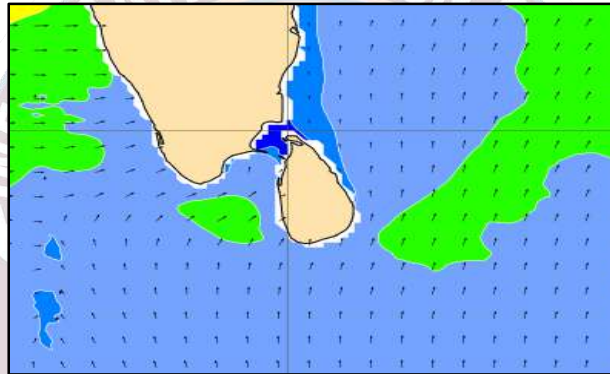
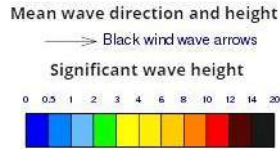


Issued at 04.00 a.m. on 02<sup>nd</sup> August 2024  
Marine Weather Division, National Meteorological Centre, Department of  
Meteorology, Sri Lanka

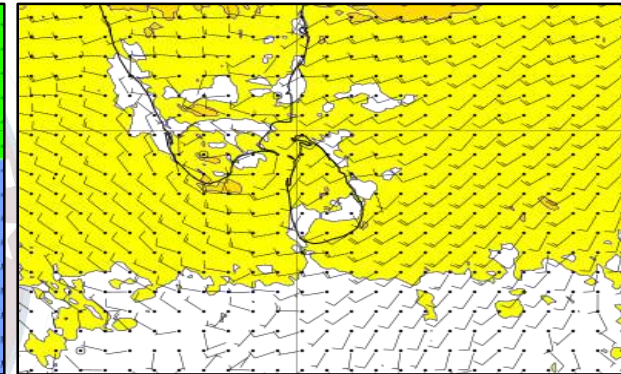
## Wind and Rainfall Forecast (Total precipitation for 24 hrs)



## Significant wave height (in meters)



## Wind Gust (m/s)

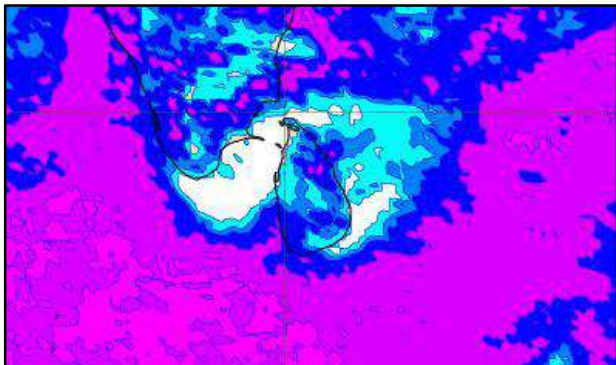
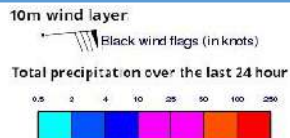


Showers or thundershowers will occur at several places in the sea areas off the coast extending from Puttalam to Matara via Colombo and Galle. Mainly fair weather will prevail in the other sea areas around the island.

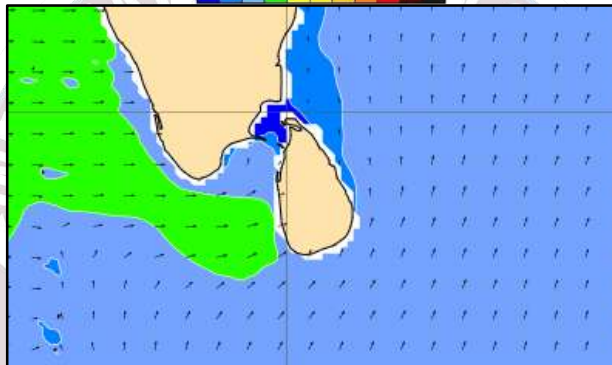
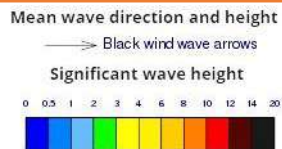
Wind speed will be 30-40 kmph in the sea areas extending from Kankasanturai to Puttalam via Mannar and from Hambantota to Pottuvil. Wind speed can increase up to 50 kmph at times and the sea condition will be rough at times in these sea areas. Wind speed will be 20-30 kmph in the other sea areas around the island. Wind speed can increase up to 45 kmph at times and the sea condition will be fairly rough at times in the sea areas extending from Puttalam to Hambantota via Colombo.



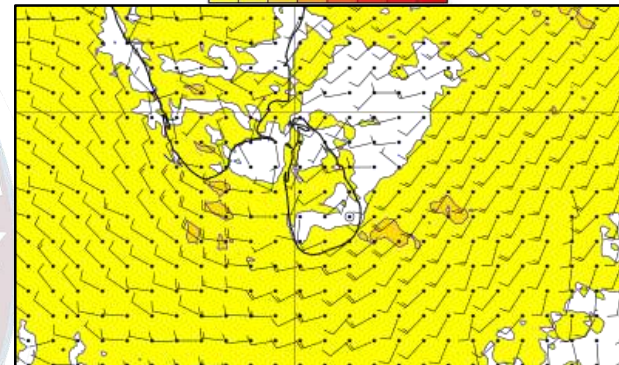
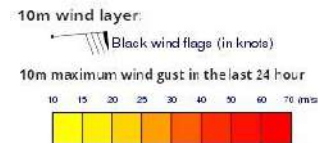
## Wind and Rainfall Forecast (Total precipitation for 24 hrs)



## Significant wave height (in meters)



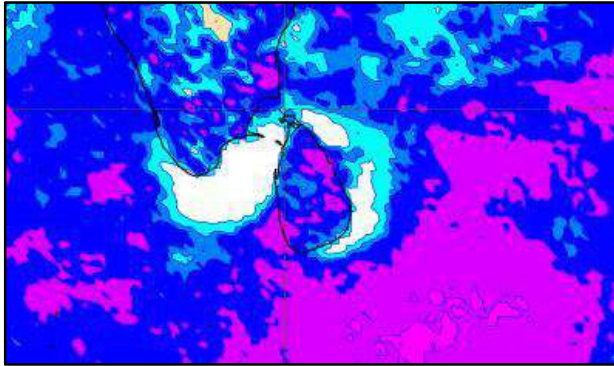
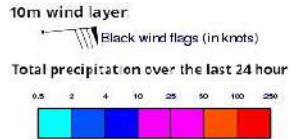
## Wind Gust (m/s)



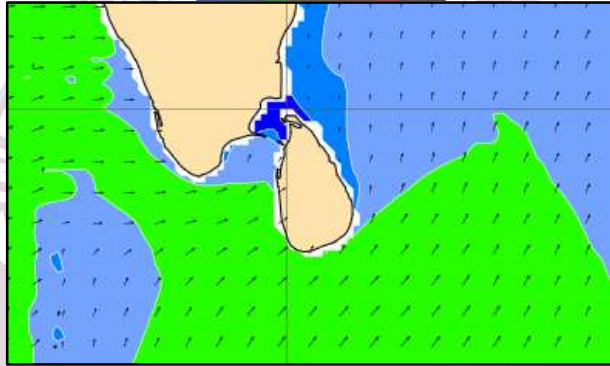
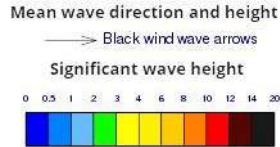
Showers or thundershowers will occur at several places in the sea areas off the coast extending from Puttalam to Matara via Colombo and Galle. Showers or thundershowers will occur at a few places in the other sea areas around the island.

Wind speed will be 30-40 kmph in the sea areas extending from Kankasanturai to Puttalam via Mannar and from Hambantota to Pottuvil. Wind speed can increase up to 50 kmph at times and the sea condition will be rough at times in these sea areas. Wind speed will be 20-30 kmph in the other sea areas around the island. Wind speed can increase up to 45 kmph at times and the sea condition will be fairly rough at times in the sea areas extending from Puttalam to Hambantota via Colombo.

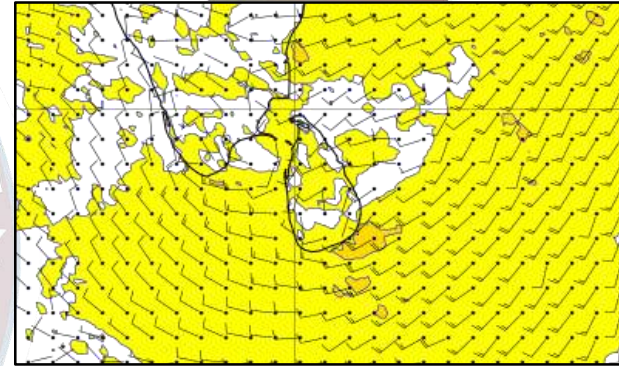
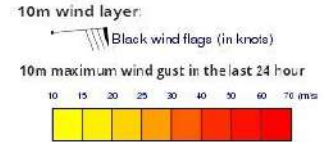
## Wind and Rainfall Forecast (Total precipitation for 24 hrs)



## Significant wave height (in meters)



## Wind Gust (m/s)

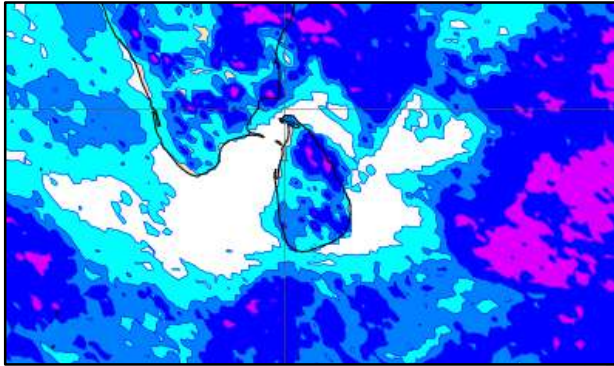
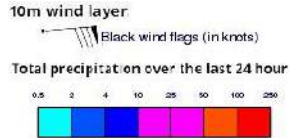


Showers or thundershowers will occur at several places in the sea areas off the coast extending from Puttalam to Matara via Colombo and Galle. Showers or thundershowers will occur at a few places in the other sea areas around the island.

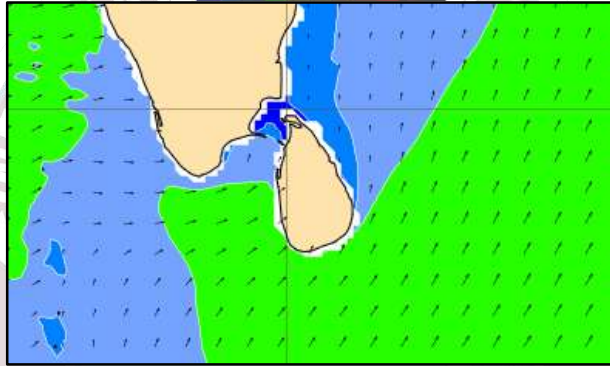
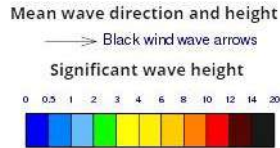
Wind speed will be 30-40 kmph in the sea areas extending from Kankasanturai to Puttalam via Mannar and from Hambantota to Pottuvil. Wind speed can increase up to 50 kmph at times and the sea condition will be rough at times in these sea areas. Wind speed will be 20-30 kmph in the other sea areas around the island. Wind speed can increase up to 45 kmph at times and the sea condition will be fairly rough at times in the sea areas extending from Puttalam to Hambantota via Colombo



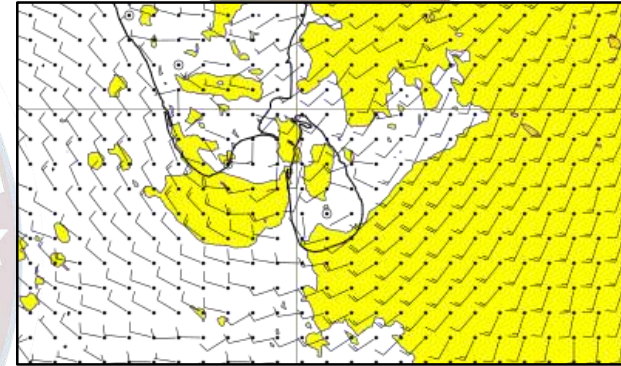
## Wind and Rainfall Forecast (Total precipitation for 24 hrs)



## Significant wave height (in meters)



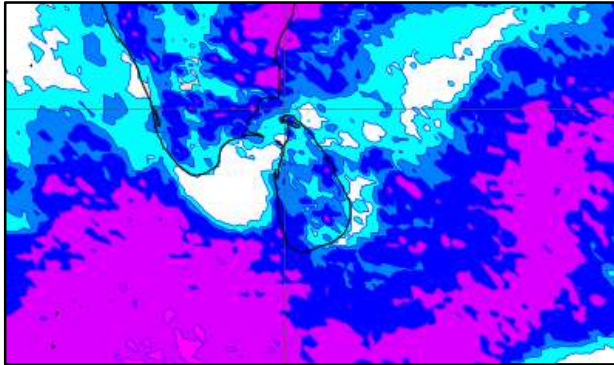
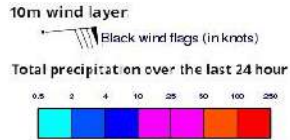
## Wind Gust (m/s)



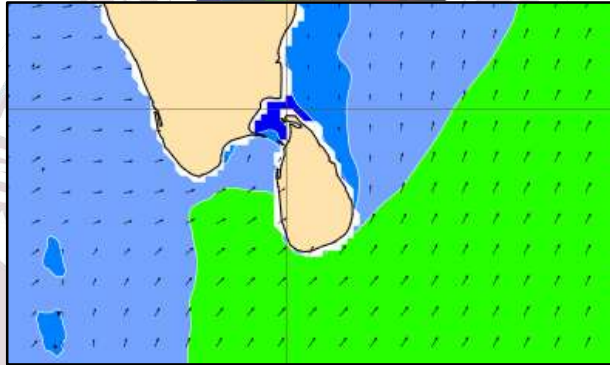
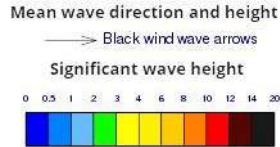
Showers or thundershowers will occur at several places in the sea areas off the coast extending from Puttalam to Matara via Colombo and Galle. Showers or thundershowers will occur at a few places in the other sea areas around the island.

Wind speed will be 30-40 kmph in the sea areas extending from Kankasanturai to Puttalam via Mannar and from Hambantota to Pottuvil. Wind speed can increase up to 50 kmph at times and the sea condition will be rough at times in these sea areas. Wind speed will be 20-30 kmph in the other sea areas around the island. Wind speed can increase up to 45 kmph at times and the sea condition will be fairly rough at times in the sea areas extending from Puttalam to Hambantota via Colombo

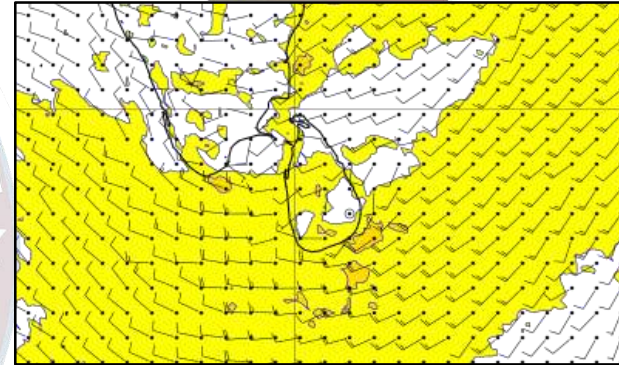
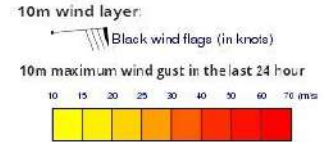
## Wind and Rainfall Forecast (Total precipitation for 24 hrs)



## Significant wave height (in meters)



## Wind Gust (m/s)

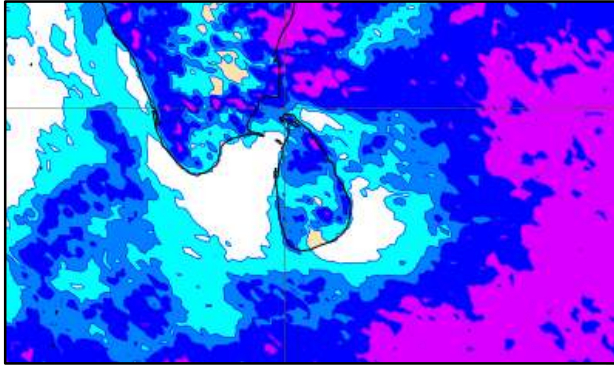
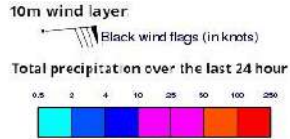


Showers or thundershowers will occur at several places in the sea areas off the coast extending from Puttalam to Matara via Colombo and Galle. Showers or thundershowers will occur at a few places in the other sea areas around the island.

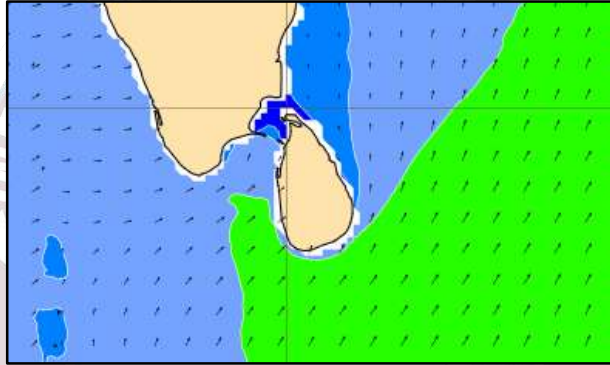
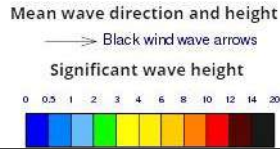
Wind speed will be 30-40 kmph in the sea areas extending from Kankasanturai to Puttalam via Mannar and from Hambantota to Pottuvil. Wind speed can increase up to 50 kmph at times and the sea condition will be rough at times in these sea areas. Wind speed will be 20-30 kmph in the other sea areas around the island. Wind speed can increase up to 45 kmph at times and the sea condition will be fairly rough at times in the sea areas extending from Puttalam to Hambantota via Colombo.



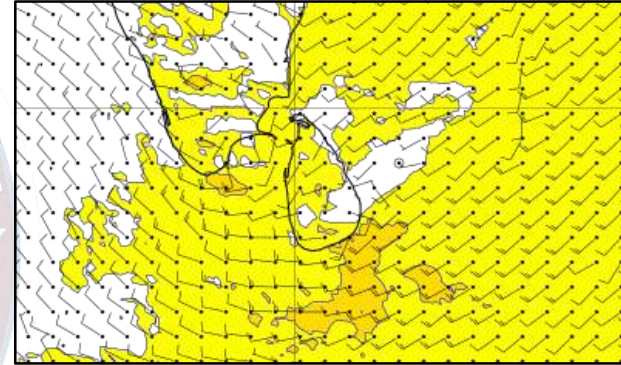
## Wind and Rainfall Forecast (Total precipitation for 24 hrs)



## Significant wave height (in meters)



## Wind Gust (m/s)

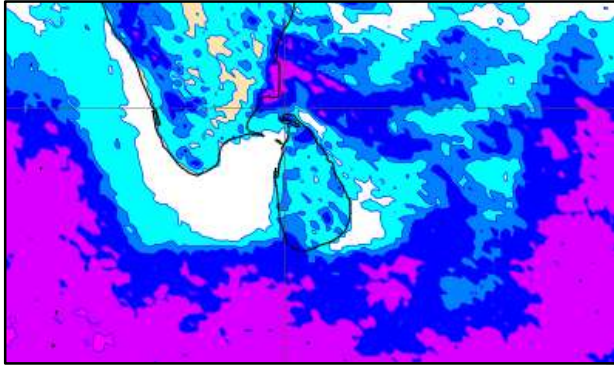
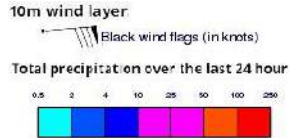


Showers or thundershowers will occur at several places in the sea areas off the coast extending from Puttalam to Matara via Colombo and Galle. Showers or thundershowers will occur at a few places in the other sea areas around the island

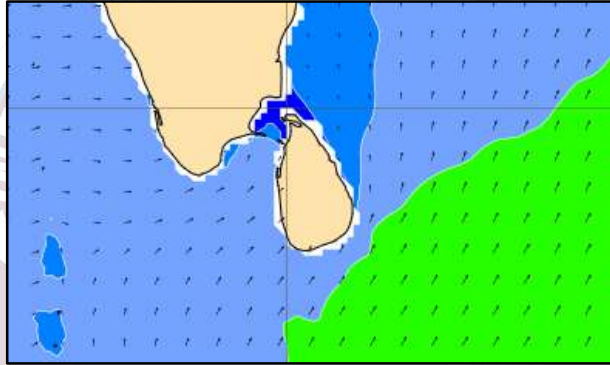
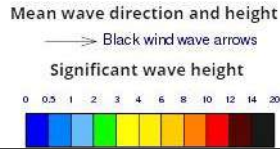
Wind speed will be 30-40 kmph in the sea areas extending from Kankasanturai to Puttalam via Mannar and from Hambantota to Pottuvil. Wind speed can increase up to 50 kmph at times and the sea condition will be rough at times in these sea areas. Wind speed will be 20-30 kmph in the other sea areas around the island. Wind speed can increase up to 45 kmph at times and the sea condition will be fairly rough at times in the sea areas extending from Puttalam to Hambantota via Colombo.



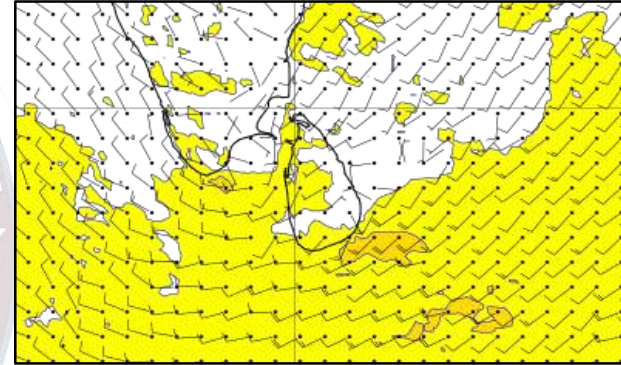
## Wind and Rainfall Forecast (Total precipitation for 24 hrs)



## Significant wave height (in meters)



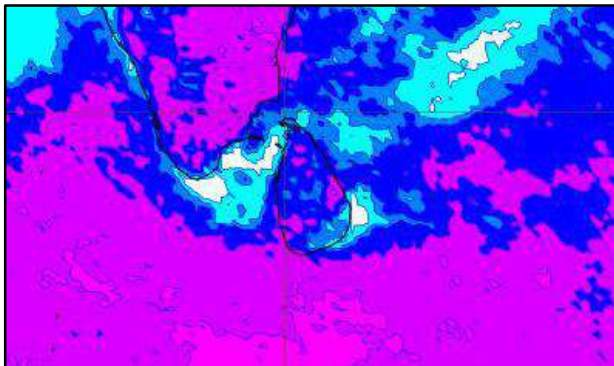
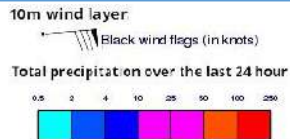
## Wind Gust (m/s)



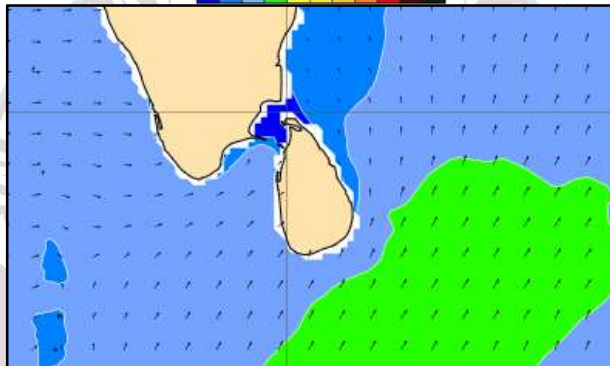
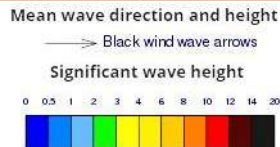
Showers or thundershowers will occur at several places in the sea areas off the coast extending from Puttalam to Matara via Colombo and Galle. Mainly fair weather will prevail in the other sea areas around the island

Wind speed will be 30-40 kmph in the sea areas extending from Kankasanturai to Puttalam via Mannar and from Hambantota to Pottuvil. Wind speed can increase up to 50 kmph at times and the sea condition will be rough at times in these sea areas. Wind speed will be 20-30 kmph in the other sea areas around the island. Wind speed can increase up to 45 kmph at times and the sea condition will be fairly rough at times in the sea areas extending from Puttalam to Hambantota via Colombo.

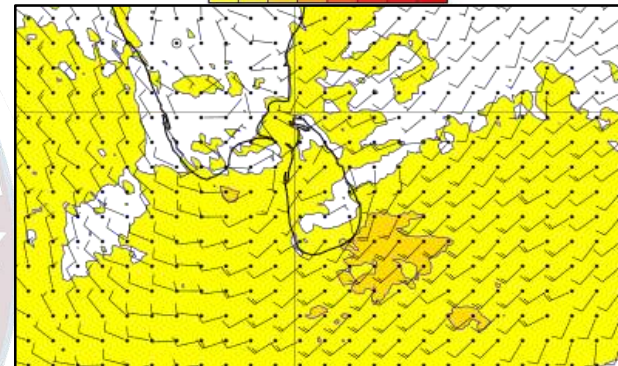
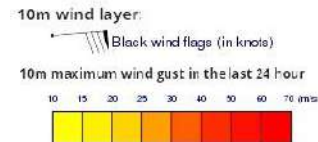
## Wind and Rainfall Forecast (Total precipitation for 24 hrs)



## Significant wave height (in meters)



## Wind Gust (m/s)



Showers or thundershowers will occur at several places in the sea areas off the coast extending from Puttalam to Matara via Colombo and Galle. Showers or thundershowers will occur at a few places in the other sea areas around the island

Wind speed will be 30-40 kmph in the sea areas extending from Kankasanturai to Puttalam via Mannar and from Hambantota to Pottuvil. Wind speed can increase up to 50-60 kmph at times and the sea condition will be rough at times in these sea areas. Wind speed will be 20-30 kmph in the other sea areas around the island. Wind speed can increase up to 45 kmph at times and the sea condition will be fairly rough at times in the sea areas extending from Puttalam to Hambantota via Colombo



Thank you!