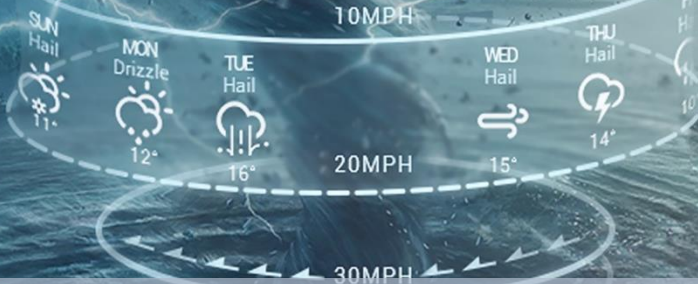


08 DAYS WEATHER FORECAST FOR COASTAL AREAS AROUND SRI LANKA

arm Direction




WARNING



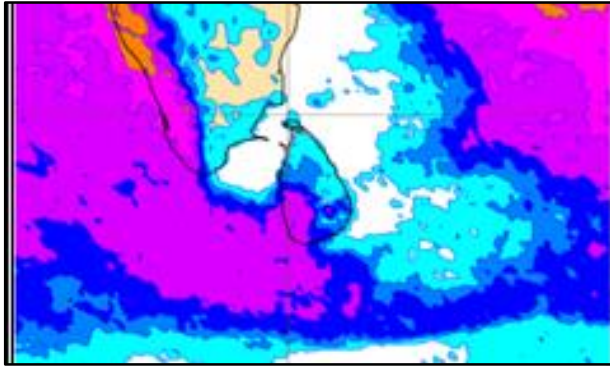
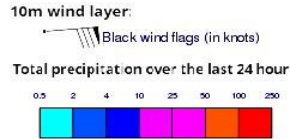
**INFORMATION FUSION CENTRE
COLOMBO**

Know weather before it comes

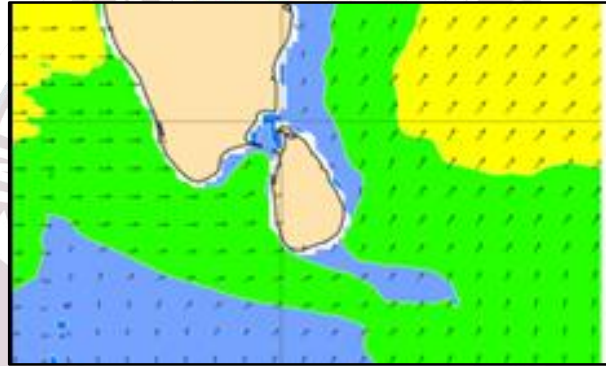
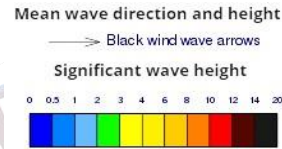


Issued at 04.00 a.m. on 16th July 2024
Marine Weather Division, National Meteorological Centre, Department of
Meteorology, Sri Lanka

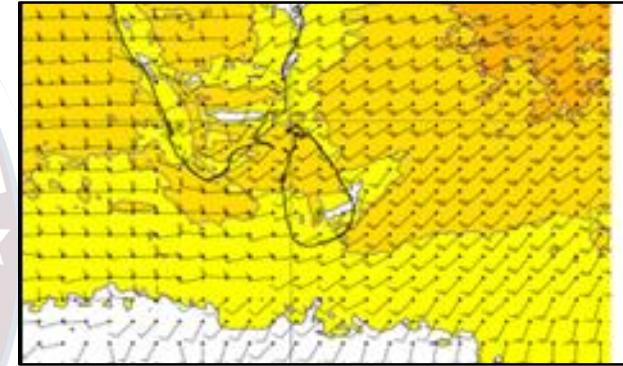
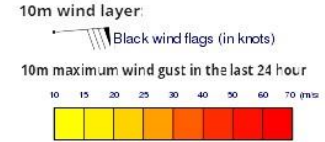
Wind and Rainfall Forecast (Total precipitation for 24 hrs)



Significant wave height (in meters)



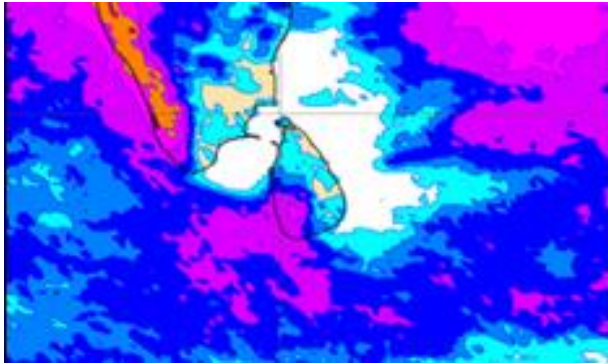
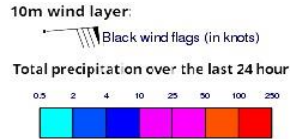
Wind Gust (m/s)



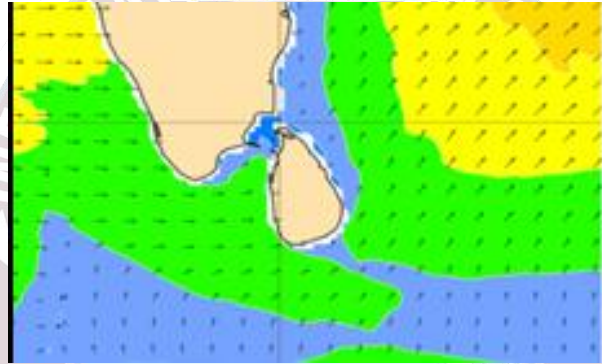
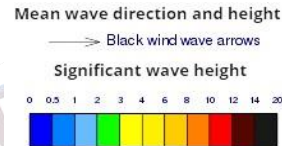
Showers or thundershowers will occur at several places in the sea areas off the coast extending from Puttalam to Matara via Colombo and Galle. Mainly fair weather will prevail in the other sea areas around the island.

Wind speed will be 30-40 kmph in the sea areas extending from Kankasanturai to Puttalam via Mannar and from Hambantota to Pottuvil. Wind speed can increase up to 65 kmph at times and the sea condition will be very rough at times in these sea areas. Wind speed will be 20-30 kmph in the other sea areas around the island. Wind speed can increase up to 55 kmph at times and the sea condition will be rough at times in the other sea areas extending from Trincomalee to Kankasanturai via Mullaituvu and from Puttalam to Hambantota via Colombo.

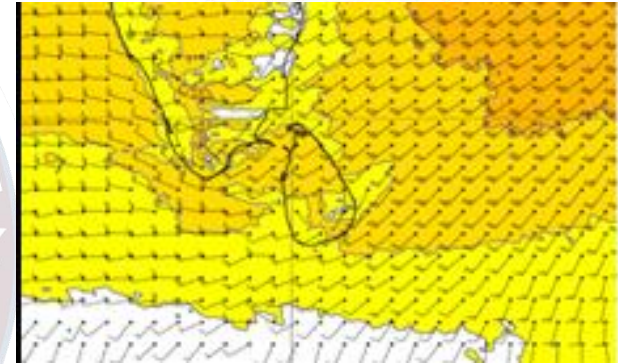
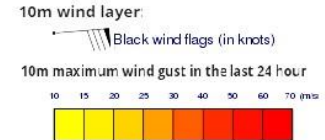
Wind and Rainfall Forecast (Total precipitation for 24 hrs)



Significant wave height (in meters)



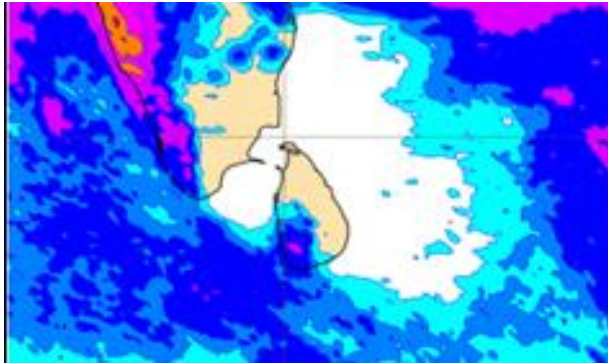
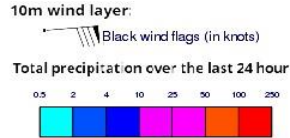
Wind Gust (m/s)



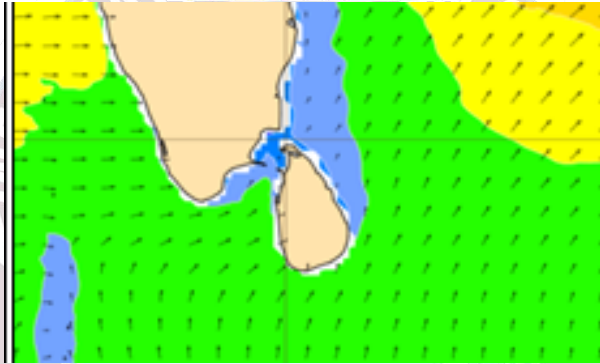
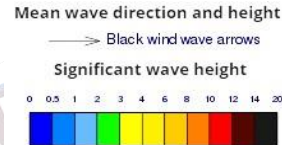
Showers or thundershowers will occur at several places in the sea areas off the coast extending from Puttalam to Matara via Colombo and Galle. Mainly fair weather will prevail in the other sea areas around the island.

Wind speed will be 30-40 kmph in the sea areas extending from Kankasanturai to Puttalam via Mannar and. from Hambantota to Pottuvil. Wind speed can increase up to 65 kmph at times and the sea condition will be very rough at times in these sea areas. Wind speed will be 20-30 kmph in the other sea areas around the island. Wind speed can increase up to 55 kmph at times and the sea condition will be rough at times in the other sea areas extending from Trincomalee to Kankasanturai via Mullaituvu and from Puttalam to Hambantota via Colombo.

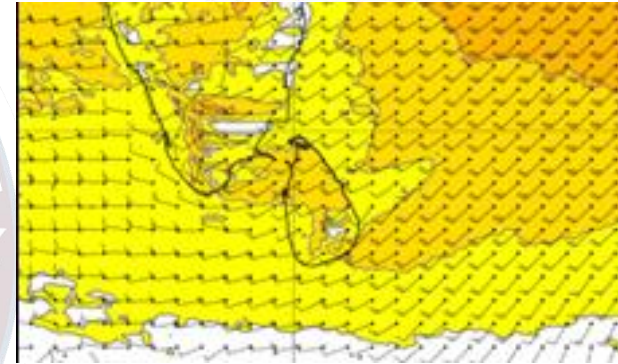
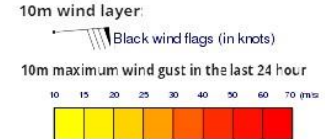
Wind and Rainfall Forecast (Total precipitation for 24 hrs)



Significant wave height (in meters)



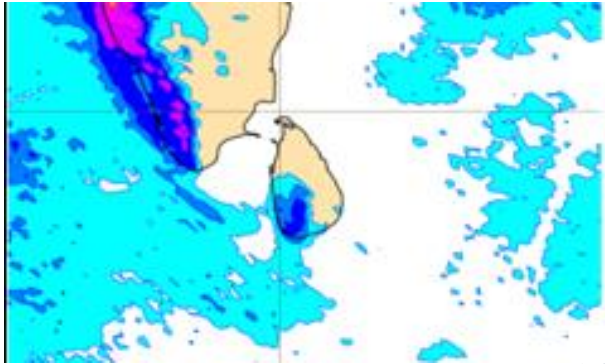
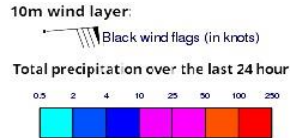
Wind Gust (m/s)



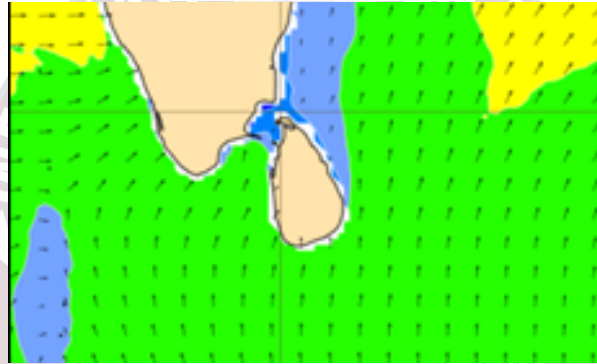
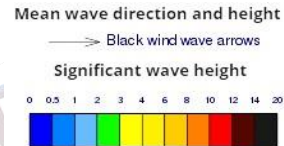
Showers or thundershowers will occur at several places in the sea areas off the coast extending from Puttalam to Matara via Colombo and Galle. Mainly fair weather will prevail in the other sea areas around the island.

Wind speed will be 30-40 kmph in the sea areas extending from Kankasanturai to Puttalam via Mannar and from Hambantota to Pottuvil. Wind speed can increase up to 60 kmph at times and the sea condition will be very rough at times in these sea areas. Wind speed will be 20-30 kmph in the other sea areas around the island. Wind speed can increase up to 50 kmph at times and the sea condition will be rough at times in the other sea areas extending from Trincomalee to Kankasanturai via Mullaituvu and from Puttalam to Hambantota via Colombo.

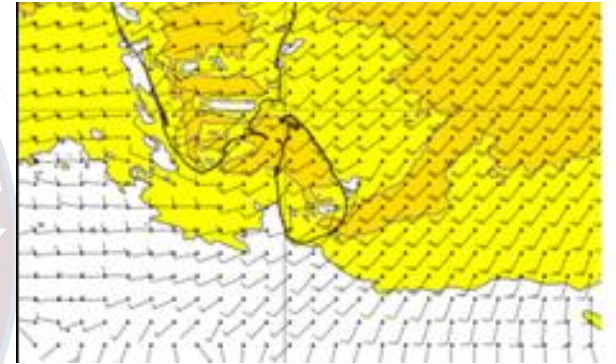
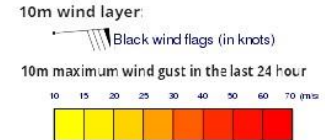
Wind and Rainfall Forecast (Total precipitation for 24 hrs)



Significant wave height (in meters)



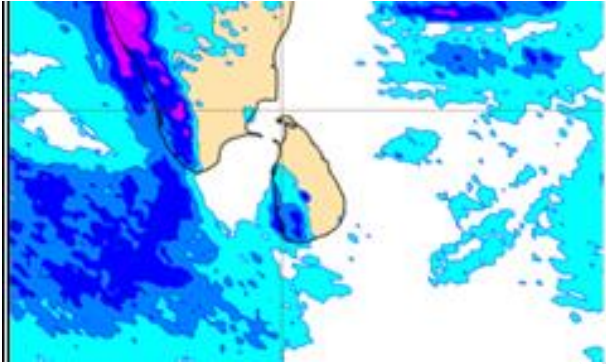
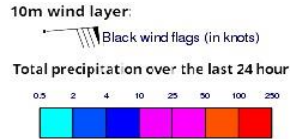
Wind Gust (m/s)



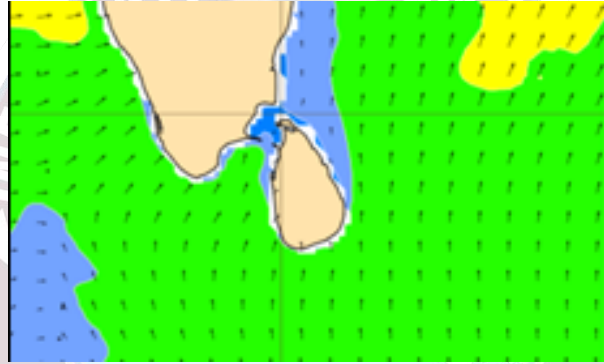
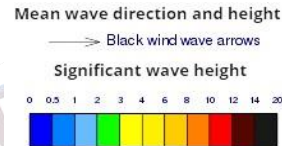
Showers or thundershowers will occur at several places in the sea areas off the coast extending from Puttalam to Matara via Colombo and Galle. Mainly fair weather will prevail in the other sea areas around the island.

Wind speed will be 30-40 kmph in the sea areas extending from Kankasanturai to Puttalam via Mannar and from Hambantota to Pottuvil. Wind speed can increase up to 50-60 kmph at times and the sea condition will be rough at times in these sea areas. Wind speed will be 20-30 kmph in the other sea areas around the island. Wind speed can increase up to 45 kmph at times and the sea condition will be fairly rough at times in the other sea areas extending from Trincomalee to Kankasanturai via Mullaituvu and from Puttalam to Hambantota via Colombo.

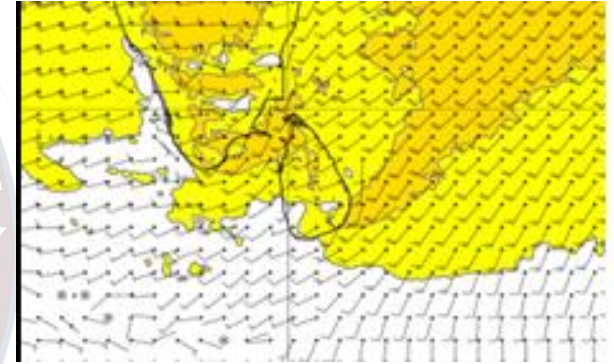
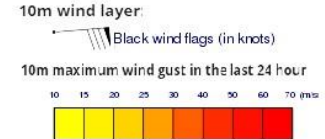
Wind and Rainfall Forecast (Total precipitation for 24 hrs)



Significant wave height (in meters)



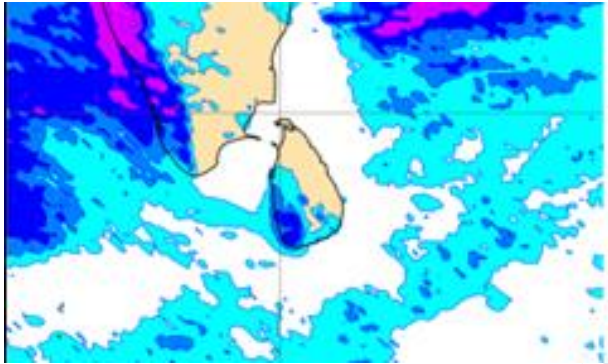
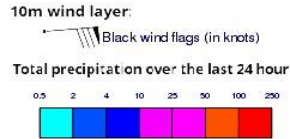
Wind Gust (m/s)



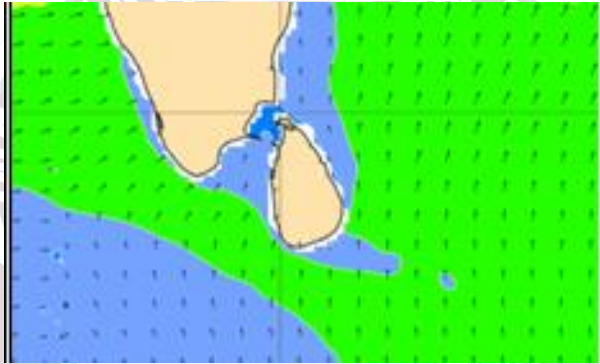
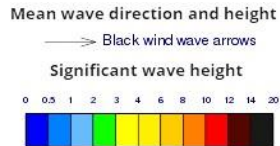
Showers or thundershowers will occur at several places in the sea areas off the coast extending from Puttalam to Matara via Colombo and Galle. Showers will occur at a few places in the other sea areas around the island

Wind speed will be 30-40 kmph in the sea areas extending from Trincomalee to Pottuvil via Kankasanturai and Colombo. Wind speed can increase up to 60 kmph at times and the sea condition will be rough at times in these sea areas. Wind speed will 15 -25 kmph in the other sea areas.

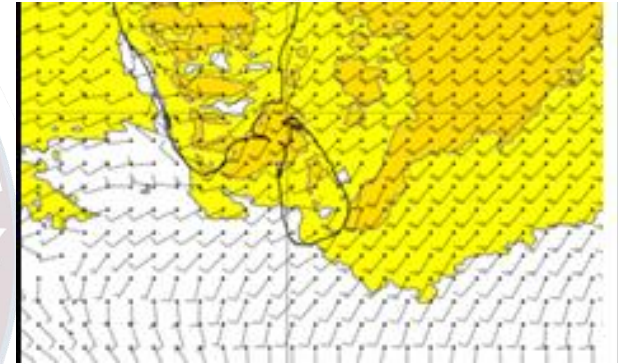
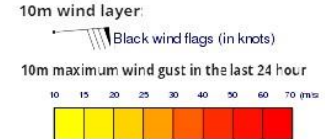
Wind and Rainfall Forecast (Total precipitation for 24 hrs)



Significant wave height (in meters)



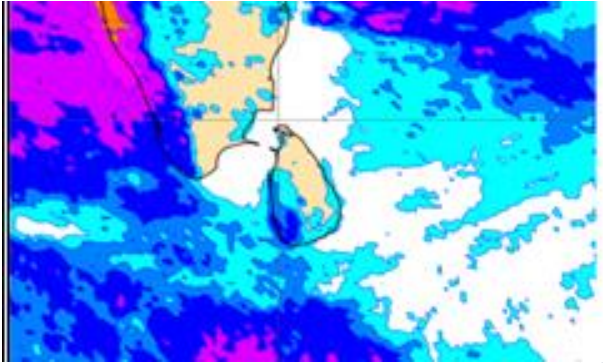
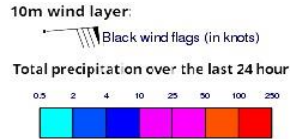
Wind Gust (m/s)



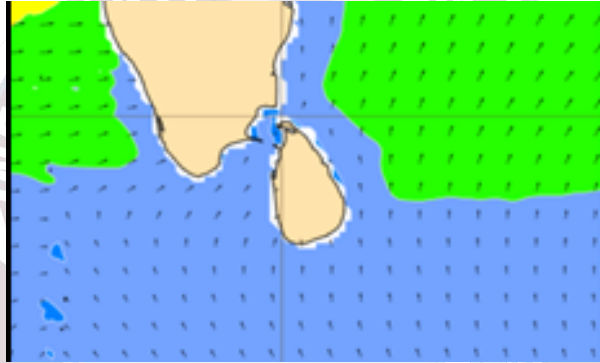
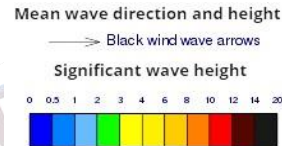
Showers or thundershowers will occur at several places in the sea areas off the coast extending from Puttalam to Matara via Colombo and Galle. Mainly fair weather will prevail in the other sea areas around the island.

Wind speed will be 30-40 kmph in the sea areas extending from Puttalam to Trincomalee via Kankasanturai and from Hambantota to Pottuvil. Wind speed can increase up to 55 kmph at times and the sea condition will be rough at times in these sea areas. Wind speed will be 20-30 kmph in the other sea areas around the island.

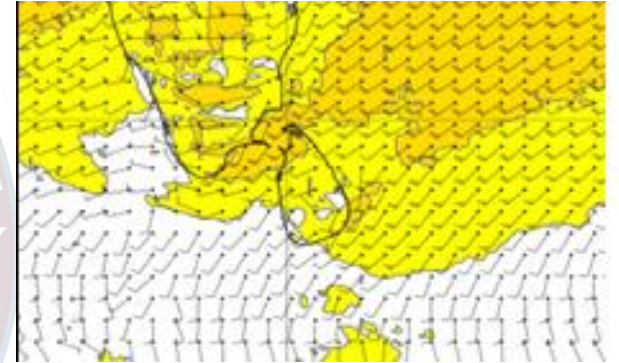
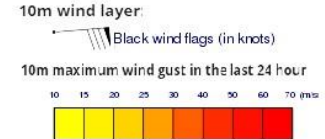
Wind and Rainfall Forecast (Total precipitation for 24 hrs)



Significant wave height (in meters)



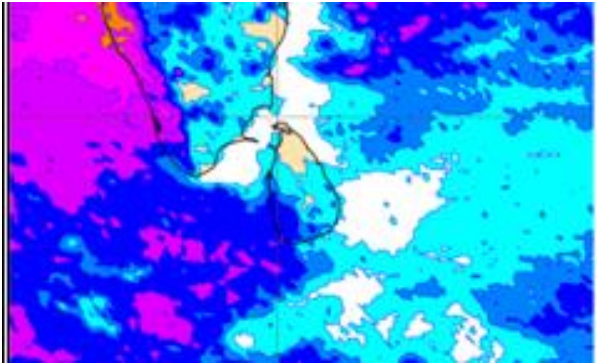
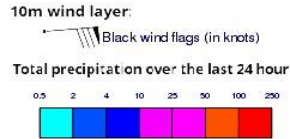
Wind Gust (m/s)



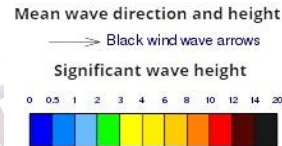
Showers or thundershowers will occur at several places in the sea areas off the coast extending from Puttalam to Matara via Colombo and Galle. Mainly fair weather will prevail in the other sea areas around the island.

Wind speed will be 30-40 kmph in the sea areas extending from Puttalam to Trincomalee via Kankasanturai and from Hambantota to Pottuvil. Wind speed can increase up to 55 kmph at times and the sea condition will be rough at times in these sea areas. Wind speed will be 20-30 kmph in the other sea areas around the island.

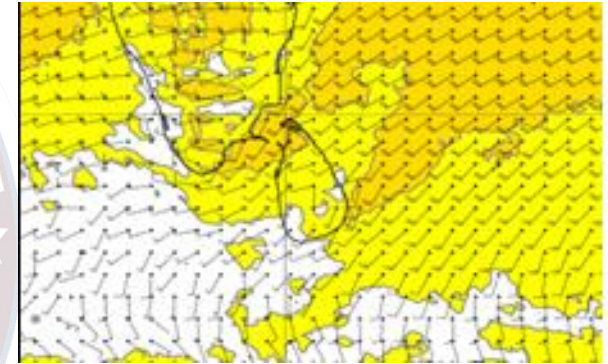
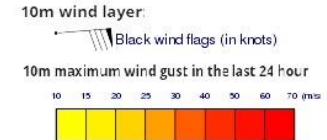
Wind and Rainfall Forecast (Total precipitation for 24 hrs)



Significant wave height (in meters)



Wind Gust (m/s)



Showers or thundershowers will occur at several places in the sea areas off the coast extending from Puttalam to Matara via Colombo and Galle. Mainly fair weather will prevail in the other sea areas around the island.

Wind speed will be 30-40 kmph in the sea areas extending from Puttalam to Trincomalee via Kankasanturai and from Hambantota to Pottuvil. Wind speed can increase up to 55 kmph at times and the sea condition will be rough at times in these sea areas. Wind speed will be 20-30 kmph in the other sea areas around the island.

The logo is a circular emblem. The outer ring is dark blue with the text 'INFORMATION FUSION CENTRE' in white at the top and 'COLOMBO - SRI LANKA' in white at the bottom. The inner circle features a map of South and Central Asia in light blue, with the Indian Ocean to the south. A red and white circular seal is partially visible behind the map.

Thank you!