

08 DAYS WEATHER FORECAST FOR COASTAL AREAS AROUND SRI LANKA

Storm Direction

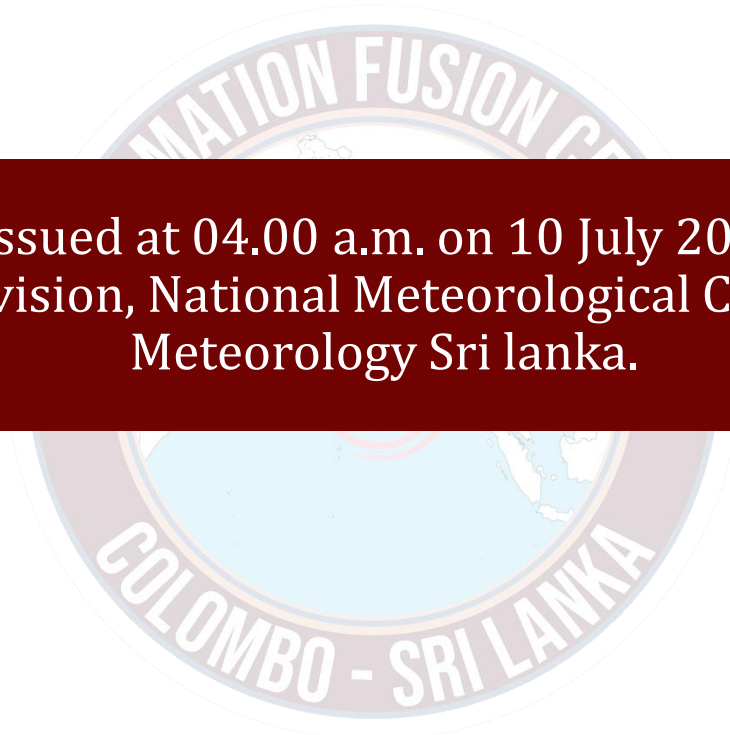


WARNING



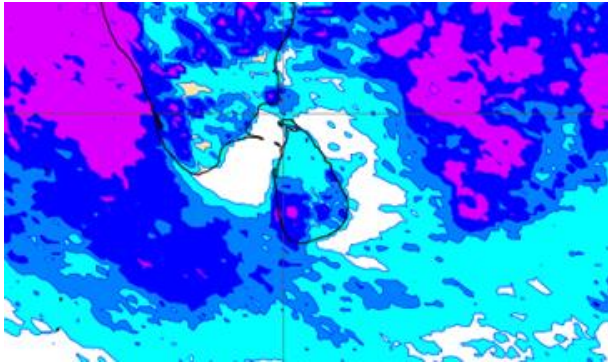
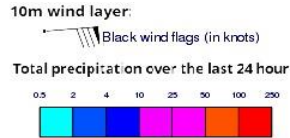
**INFORMATION FUSION CENTRE
COLOMBO**

Know weather before it comes

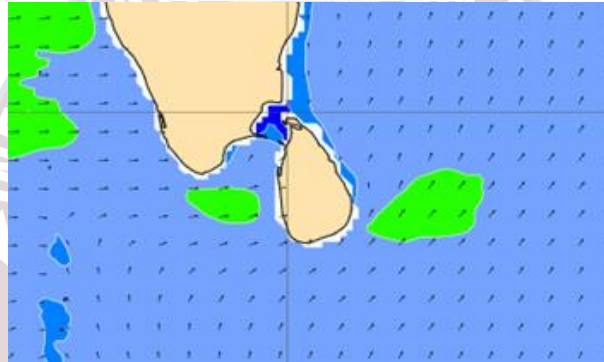
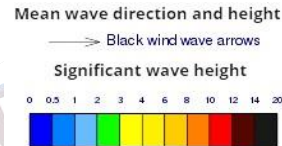


Issued at 04.00 a.m. on 10 July 2024
Marine Weather Division, National Meteorological Centre, Department of
Meteorology Sri Lanka.

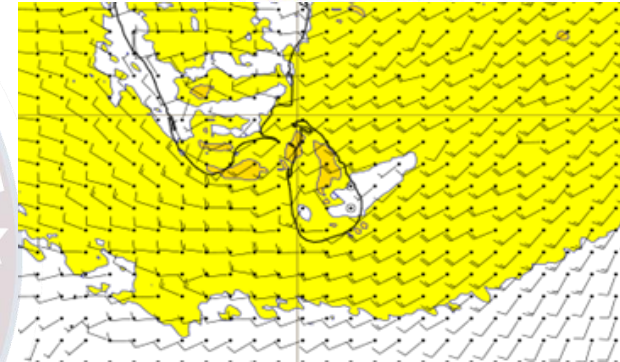
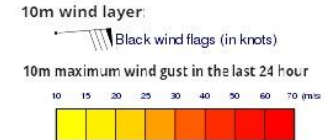
Wind and Rainfall Forecast (Total precipitation for 24 hrs)



Significant wave height (in meters)



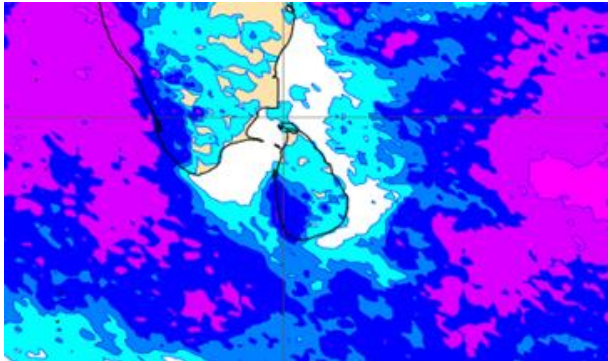
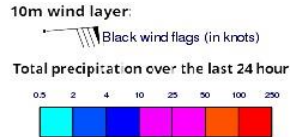
Wind Gust (m/s)



Showers or thundershowers will occur at a few places in the sea areas off the coast extending from Puttalam to Matara via Colombo and Galle. Mainly fair weather will prevail in the other sea areas around the island.

Wind speed will be 30-40 kmph, can increase up to 60 kmph at times and the sea condition will be rough at times in these sea areas extending from Puttalam to Trincomalee via Kankasanturai and from Hambantota to Pottuvil. Wind speed will be 15- 25 kmph in the other sea areas around the island, can increase up to 45 kmph at times and the sea condition will be fairly rough at times in the other sea areas extending from Puttalam to Hambantota via Galle.

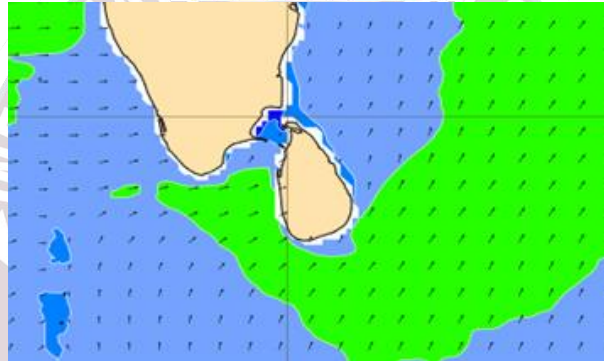
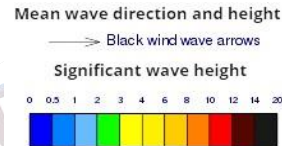
Wind and Rainfall Forecast (Total precipitation for 24 hrs)



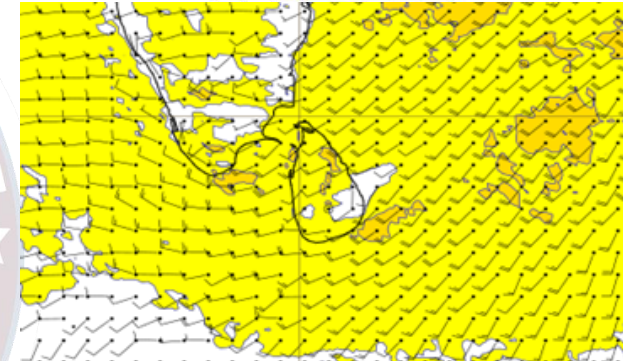
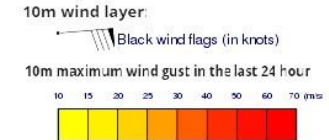
Showers or thundershowers will occur at several places in the sea areas off the coast extending from Puttalam to Matara via Colombo and Galle. Mainly fair weather will prevail in the other sea areas around the island.

Wind speed will be 30-40 kmph, can increase up to 55 kmph at times and the sea condition will be rough at times in these sea areas extending from Puttalam to Trincomalee via Kankasanturai and from Hambantota to Pottuvil. Wind speed will be 15- 25 kmph in the other sea areas around the island, can increase up to 45 kmph at times and the sea condition will be fairly rough at times in the other sea areas extending from Puttalam to Hambantota via Galle.

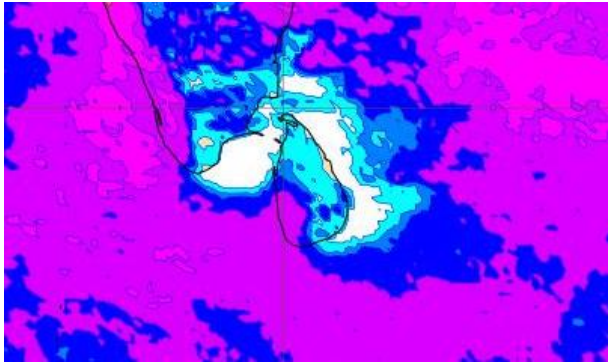
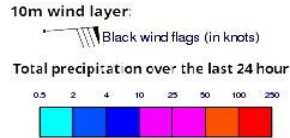
Significant wave height (in meters)



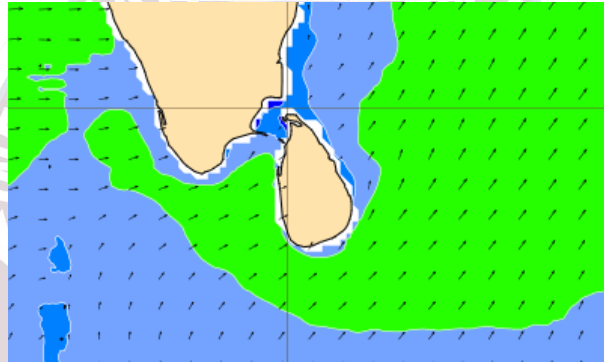
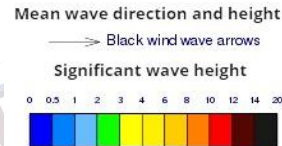
Wind Gust (m/s)



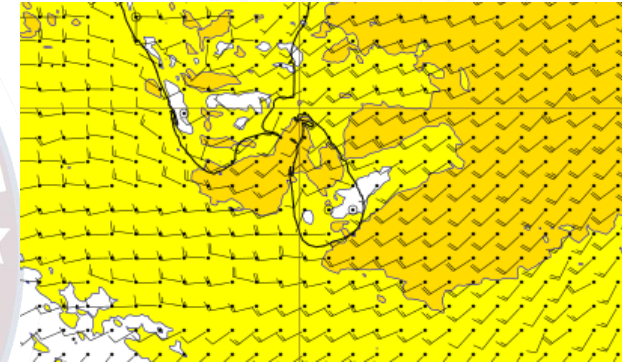
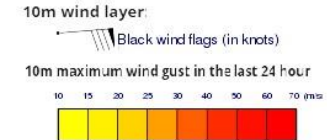
Wind and Rainfall Forecast (Total precipitation for 24 hrs)



Significant wave height (in meters)



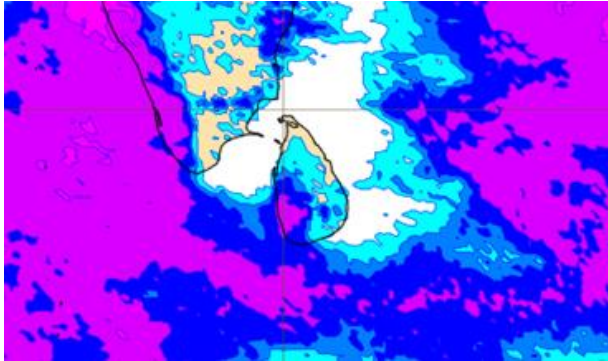
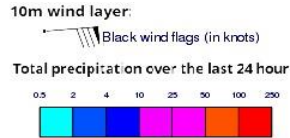
Wind Gust (m/s)



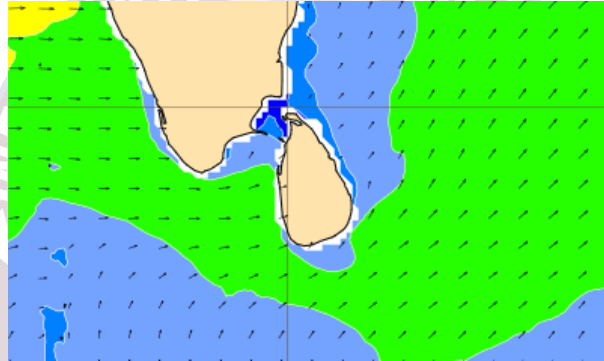
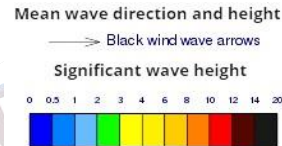
Showers or thundershowers will occur at several places in the sea areas off the coast extending from Puttalam to Matara via Colombo and Galle. Mainly fair weather will prevail in the other sea areas around the island.

Wind speed will be 35-45 kmph, can increase up to 60 kmph at times and the sea condition will be very rough at times in these sea areas extending from Puttalam to Trincomalee via Kankasanturai and from Hambantota to Pottuvil. Wind speed will be 15- 25 kmph in the other sea areas around the island, can increase up to 45 kmph at times and the sea condition will be fairly rough at times in the other sea areas extending from Puttalam to Hambantota via Galle.

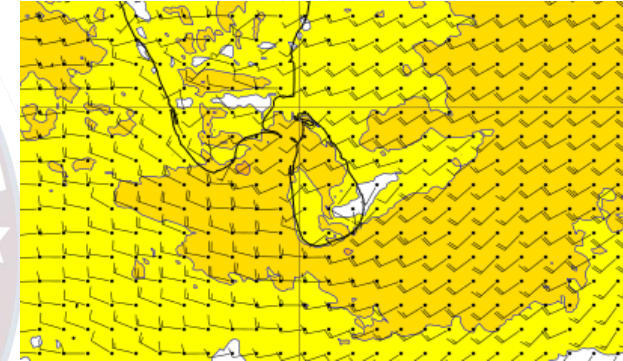
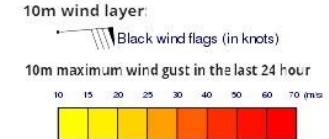
Wind and Rainfall Forecast (Total precipitation for 24 hrs)



Significant wave height (in meters)



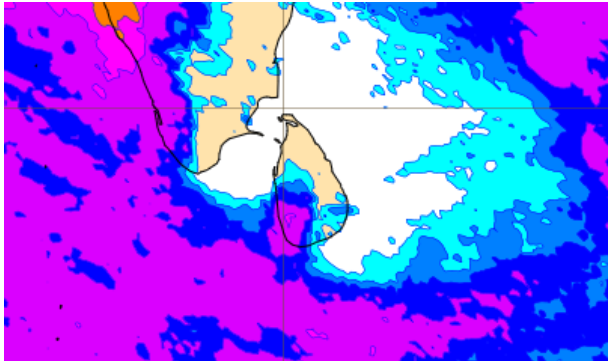
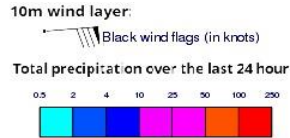
Wind Gust (m/s)



Showers or thundershowers will occur at several places in the sea areas off the coast extending from Puttalam to Matara via Colombo and Galle. Showers will occur at a few places in the other sea areas around the island.

Wind speed will be 30-40 kmph in the sea areas extending from Trincomalee to Pottuvil via Kankasanturai and Colombo. Wind speed can increase up to 60 kmph at times and the sea condition will be rough at times in these sea areas. Wind speed will 15 -25 kmph in the other sea areas.

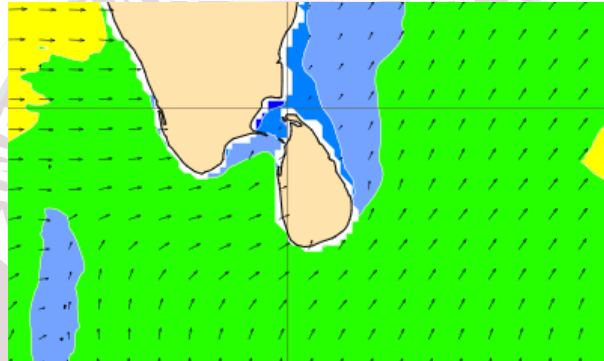
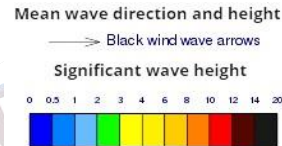
Wind and Rainfall Forecast (Total precipitation for 24 hrs)



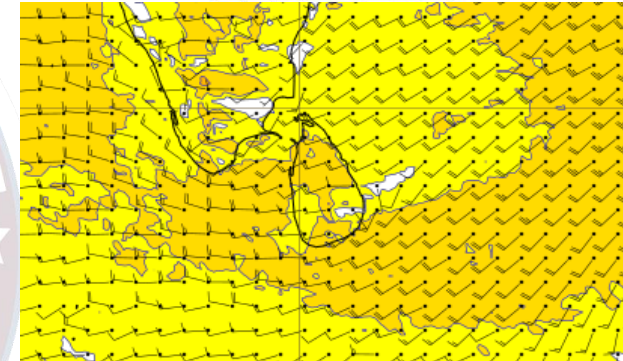
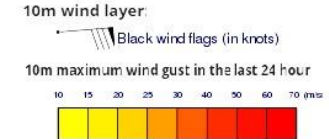
Showers or thundershowers will occur at several places in the sea areas off the coast extending from Puttalam to Matara via Colombo and Galle. Showers will occur at a few places in the other sea areas around the island

Wind speed will be 30-40 kmph in the sea areas extending from Trincomalee to Pottuvil via Kankasanturai and Colombo. Wind speed can increase up to 60 kmph at times and the sea condition will be rough at times in these sea areas. Wind speed will 15 -25 kmph in the other sea areas.

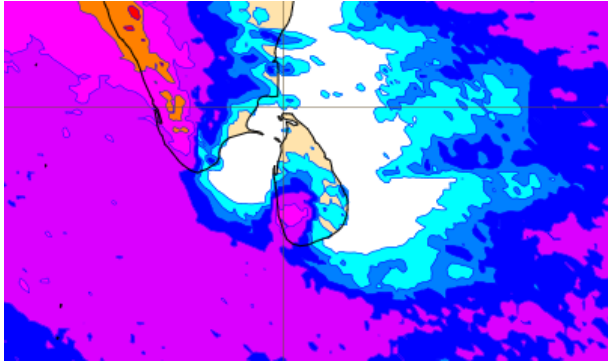
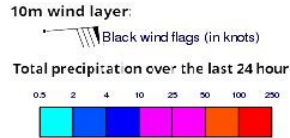
Significant wave height (in meters)



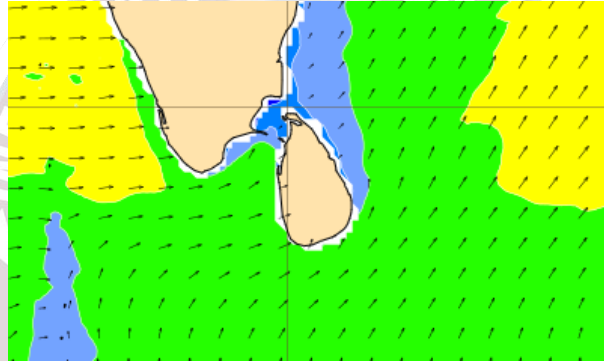
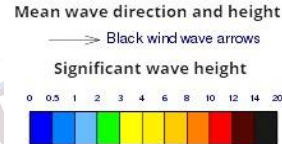
Wind Gust (m/s)



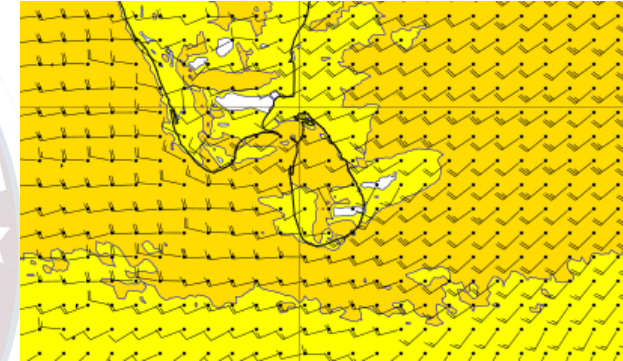
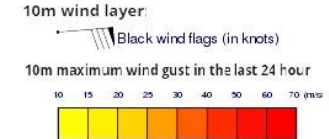
Wind and Rainfall Forecast (Total precipitation for 24 hrs)



Significant wave height (in meters)



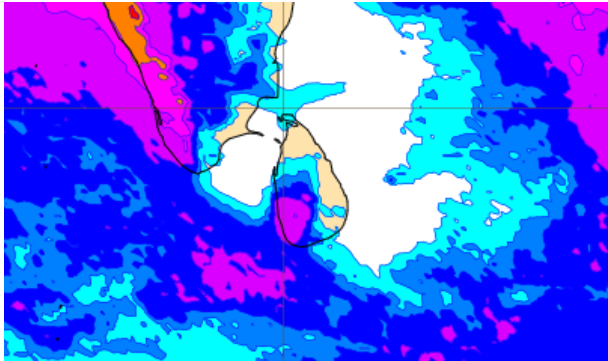
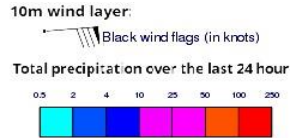
Wind Gust (m/s)



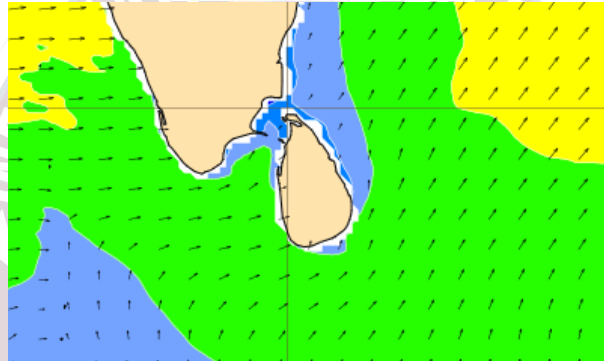
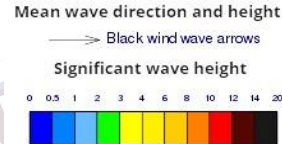
Showers or thundershowers will occur at several places in the sea areas off the coast extending from Puttalam to Matara via Colombo and Galle. Mainly fair weather will prevail in the other sea areas around the island

Wind speed will be 30-40 kmph in the sea areas extending from Trincomalee to Pottuvil via Kankasanturai and Colombo. Wind speed can increase up to 60 kmph at times and the sea condition will be rough at times in these sea areas. Wind speed will 15 -25 kmph in the other sea areas.

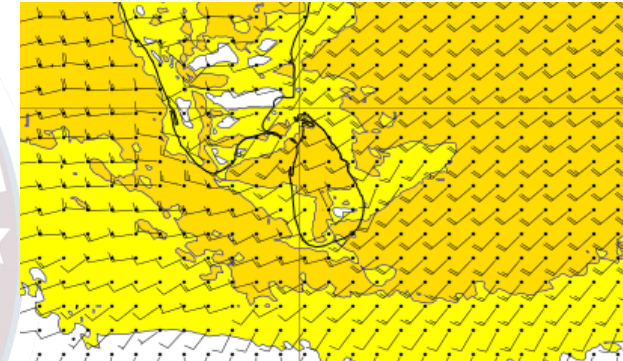
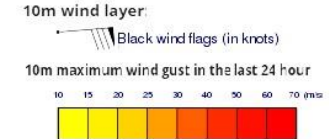
Wind and Rainfall Forecast (Total precipitation for 24 hrs)



Significant wave height (in meters)



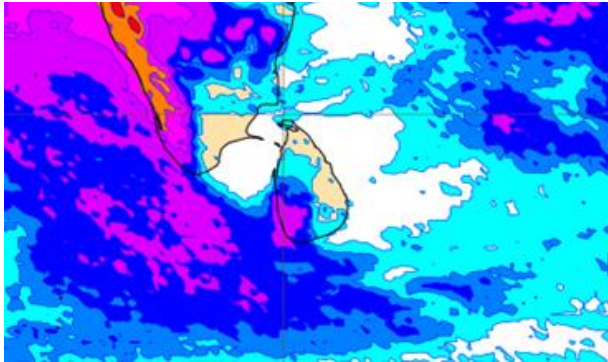
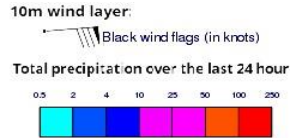
Wind Gust (m/s)



Showers or thundershowers will occur at several places in the sea areas off the coast extending from Puttalam to Matara via Colombo and Galle. Mainly fair weather will prevail in the other sea areas around the island.

Wind speed will be 30-40 kmph in the sea areas extending from Trincomalee to Pottuvil via Kankasanturai and Colombo. Wind speed can increase up to 60 kmph at times and the sea condition will be rough at times in these sea areas. Wind speed will 15 -25 kmph in the other sea areas.

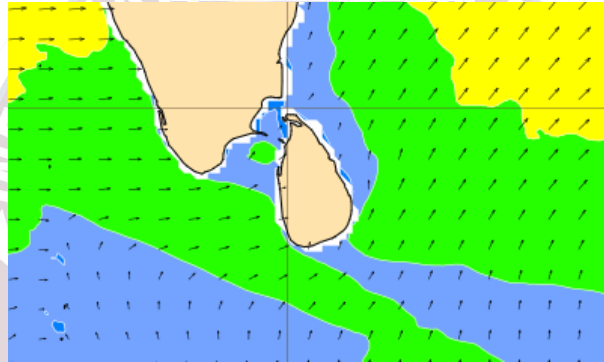
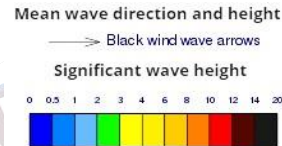
Wind and Rainfall Forecast (Total precipitation for 24 hrs)



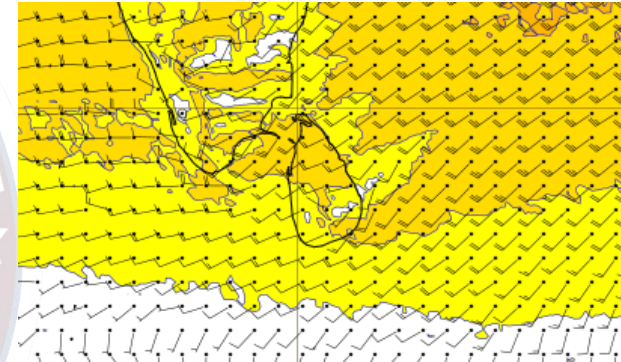
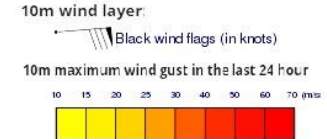
Showers or thundershowers will occur at several places in the sea areas off the coast extending from Puttalam to Matara via Colombo and Galle. Mainly fair weather will prevail in the other sea areas around the island

Wind speed will be 25-35 kmph in the sea areas extending from Trincomalee to Pottuvil via Kankasanturai and Colombo. Wind speed can increase up to 50 kmph at times and the sea condition will be rough at times in these sea areas. Wind speed will be 15- 25 kmph in the other sea areas around the island. Wind speed can increase up to 45 kmph at times and the sea condition will be fairly rough at times in the other sea areas extending from Puttalam to Hambantota via Galle

Significant wave height (in meters)



Wind Gust (m/s)



The logo of the Information Fusion Centre Colombo - Sri Lanka is a circular emblem. It features a map of Sri Lanka in the center, surrounded by a blue ring. The text "INFORMATION FUSION CENTRE" is written in a semi-circle at the top, and "COLOMBO - SRI LANKA" is written in a semi-circle at the bottom. The entire logo is rendered in a light, faded style.

Thank you!