

07 DAYS WEATHER FORECAST FOR COASTAL AREAS AROUND SRI LANKA

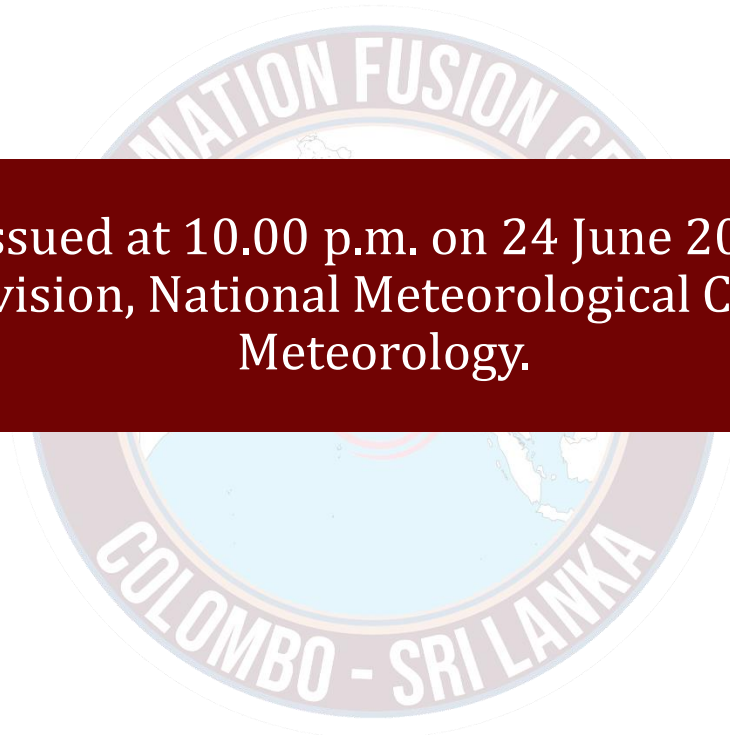
Storm Direction



WARNING

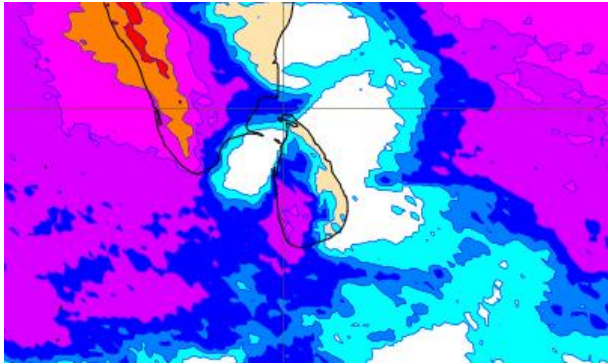
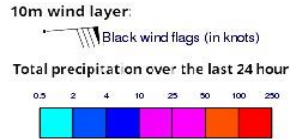


**INFORMATION FUSION CENTRE
COLOMBO**

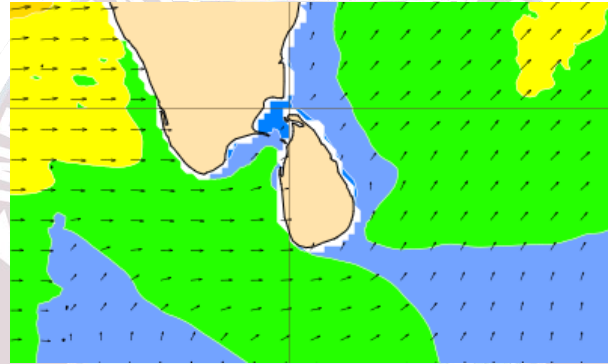
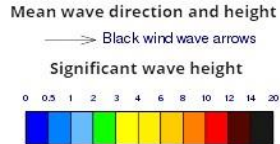


Issued at 10.00 p.m. on 24 June 2024
Marine Weather Division, National Meteorological Centre, Department of
Meteorology.

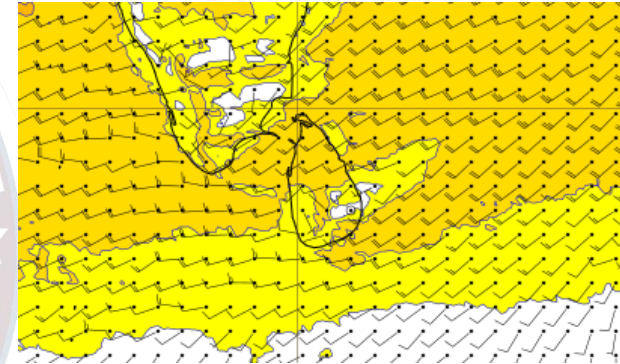
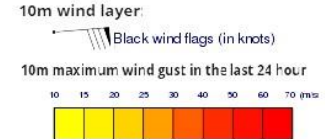
Wind and Rainfall Forecast (Total precipitation for 24 hrs)



Significant wave height (in meters)



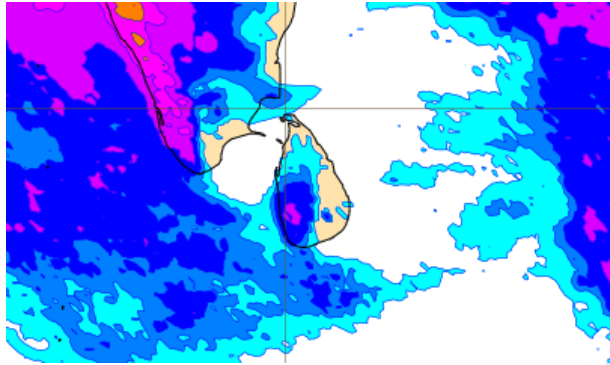
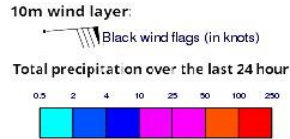
Wind Gust (m/s)



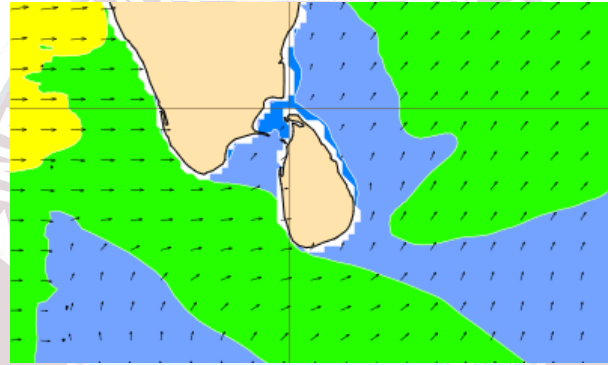
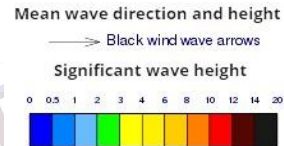
Showers or thundershowers will occur at several places in the sea areas off the coast extending from Puttalam to Matara via Colombo and Galle. Mainly fair weather will prevail in the other sea areas around the island.

Wind speed will be 35-45 kmph in the sea areas around the island. Wind speed can increase up to 60-70 kmph at times and the sea condition will be very rough at times in these sea areas extending from Puttalam to Kankasanturai via Mannar and from Hambantota to Pottuvil. Wind speed can increase up to 55 kmph at times and the sea condition will be rough at times in the other sea areas extending from Puttalam to Hambantota via Galle and from Trincomalee to Kankasanturai via Mallaithivu.

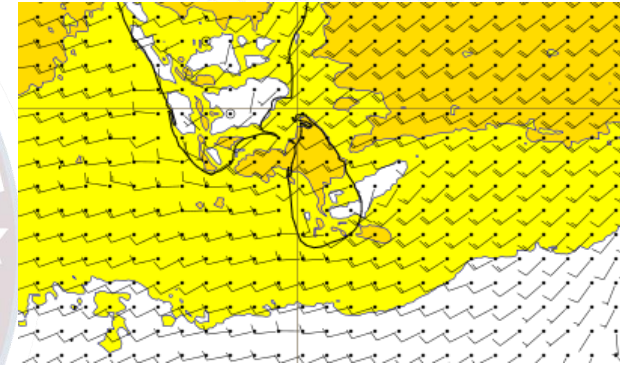
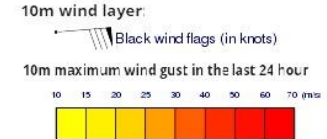
Wind and Rainfall Forecast (Total precipitation for 24 hrs)



Significant wave height (in meters)



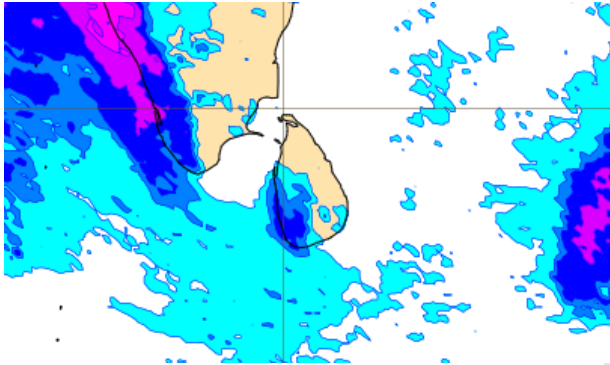
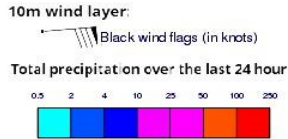
Wind Gust (m/s)



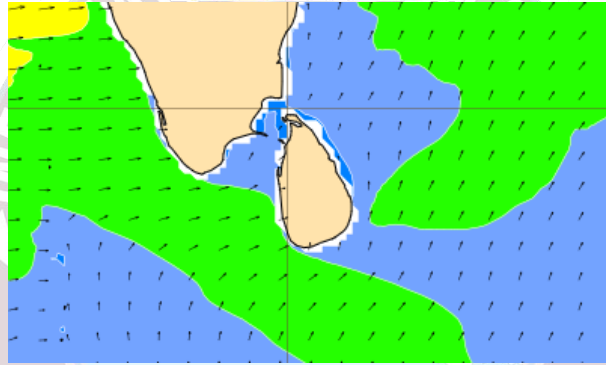
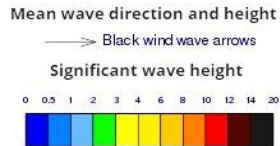
Showers or thundershowers will occur at several places in the sea areas off the coast extending from Puttalam to Matara via Colombo and Galle. Mainly fair weather will prevail in the other sea areas around the island.

Wind speed will be 30-40 kmph in the sea areas around the island. Wind speed can increase up to 60 kmph at times and the sea condition will be very rough at times in these sea areas extending from Puttalam to Kankasanturai via Mannar and from Hambantota to Pottuvil. Wind speed can increase up to 50 kmph at times and the sea condition will be rough at times in the other sea areas extending from Puttalam to Hambantota via Galle and from Trincomalee to Kankasanturai via Mallaithivu.

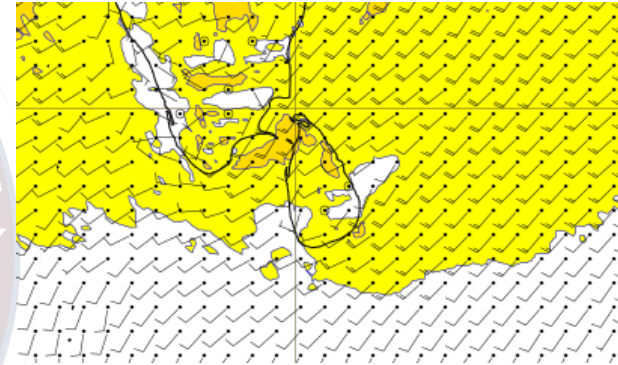
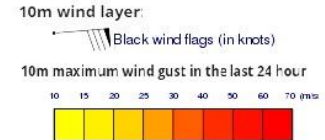
Wind and Rainfall Forecast (Total precipitation for 24 hrs)



Significant wave height (in meters)



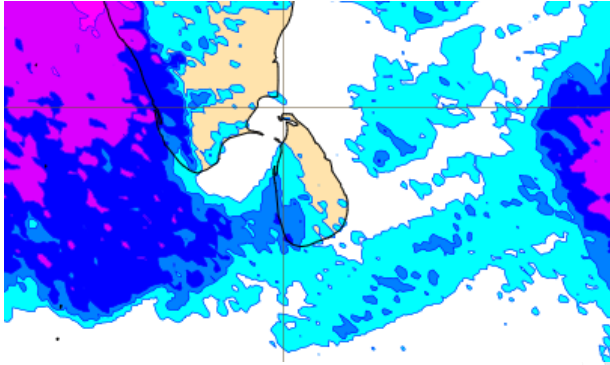
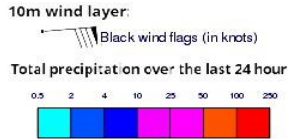
Wind Gust (m/s)



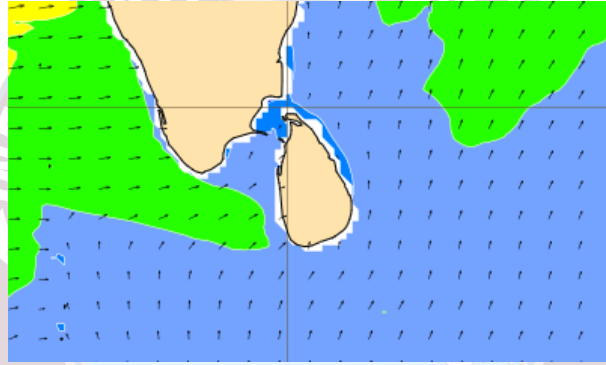
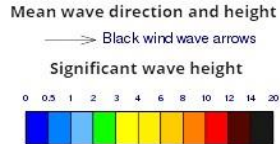
Showers or thundershowers will occur at several places in the sea areas off the coast extending from Puttalam to Matara via Colombo and Galle. Mainly fair weather will prevail in the other sea areas around the island.

Wind speed will be 30-40 kmph in the sea areas extending from Puttalam to Kankasanturai via Mannar and from Hambantota to Pottuvil. Wind speed can increase up to 50 kmph at times and the sea condition will be rough at times in these sea areas. Wind speed will 20 -30 kmph and can increase up to 45 kmph at times and the sea condition will be fairly rough at times in the other sea areas.

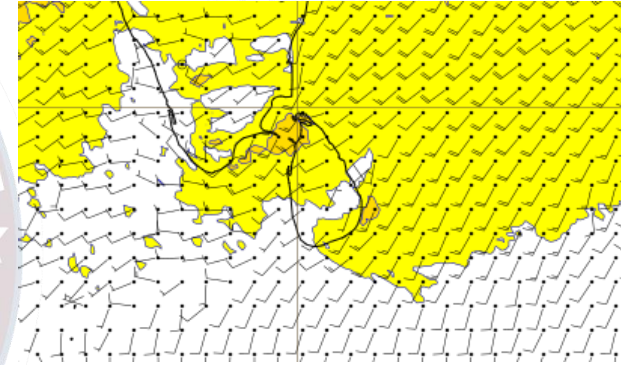
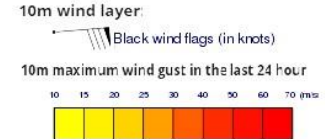
Wind and Rainfall Forecast (Total precipitation for 24 hrs)



Significant wave height (in meters)



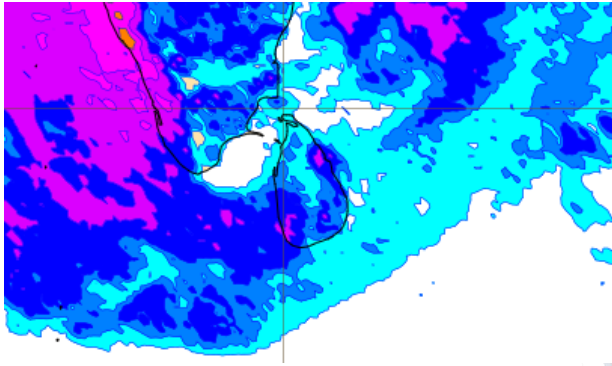
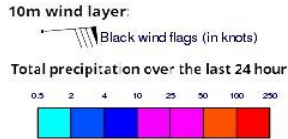
Wind Gust (m/s)



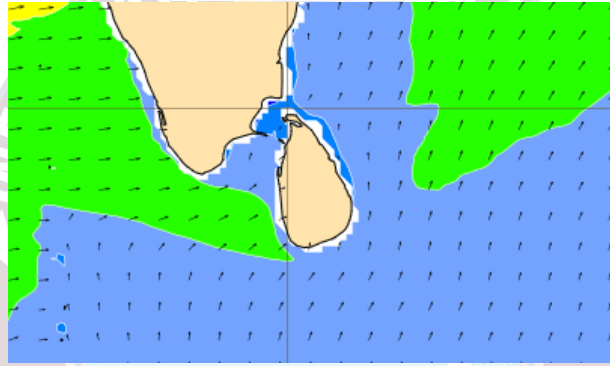
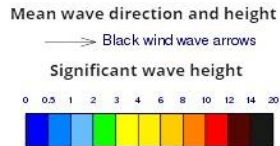
Showers or thundershowers will occur at several places in the sea areas off the coast extending from Puttalam to Matara via Colombo and Galle. Mainly fair weather will prevail in the other sea areas around the island.

Wind speed will be 30-40 kmph in the sea areas extending from Puttalam to Kankasanturai via Mannar and from Hambantota to Pottuvil. Wind speed can increase up to 50 kmph at times and the sea condition will be rough at times in these sea areas. Wind speed will 20 -30 kmph and can increase up to 45 kmph at times and the sea condition will be fairly rough at times in the other sea areas.

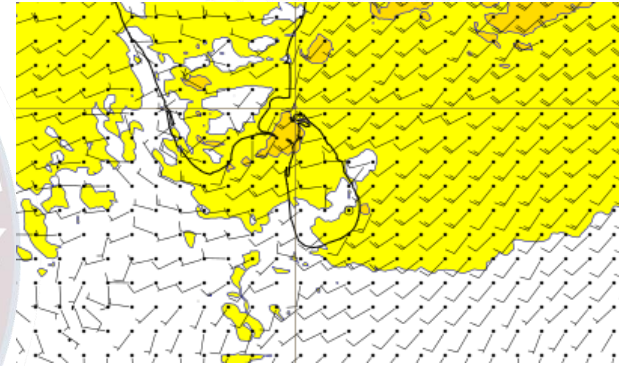
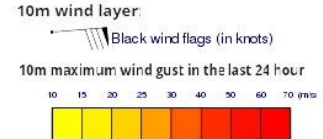
Wind and Rainfall Forecast (Total precipitation for 24 hrs)



Significant wave height (in meters)



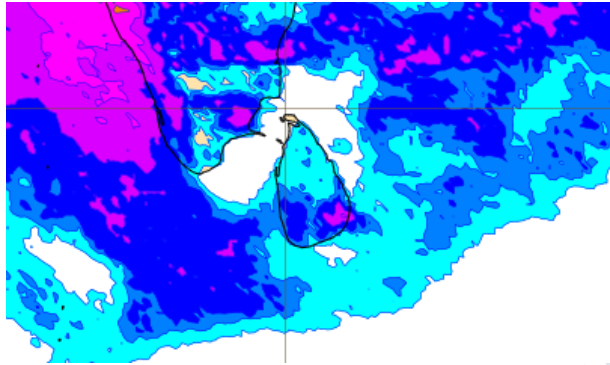
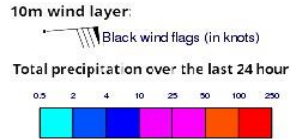
Wind Gust (m/s)



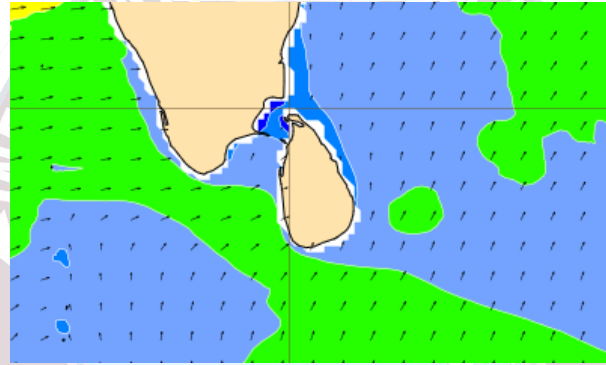
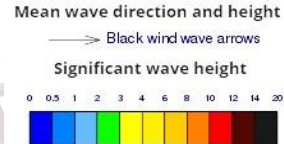
Showers or thundershowers will occur at several places in the sea areas off the coast extending from Puttalam to Matara via Colombo and Galle. Mainly fair weather will prevail in the other sea areas around the island.

Wind speed will be 30-40 kmph in the sea areas extending from Puttalam to Kankasanturai via Mannar and from Hambantota to Pottuvil. Wind speed can increase up to 50 kmph at times and the sea condition will be rough at times in these sea areas. Wind speed will 20 -30 kmph and can increase up to 45 kmph at times and the sea condition will be fairly rough at times in the other sea areas.

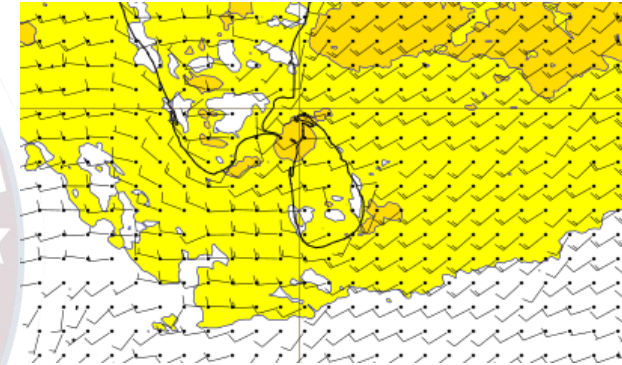
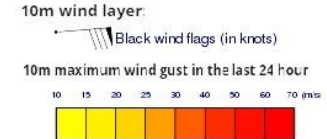
Wind and Rainfall Forecast (Total precipitation for 24 hrs)



Significant wave height (in meters)



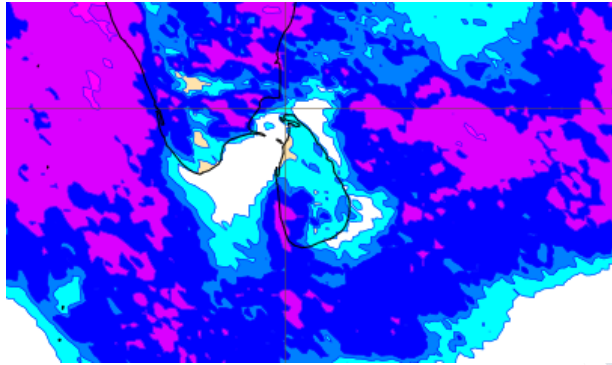
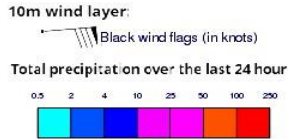
Wind Gust (m/s)



Showers or thundershowers will occur at several places in the sea areas off the coast extending from Puttalam to Matara via Colombo and Galle. Mainly fair weather will prevail in the other sea areas around the island.

Wind speed will be 30-40 kmph in the sea areas extending from Puttalam to Kankasanturai via Mannar and from Hambantota to Pottuvil. Wind speed can increase up to 50 kmph at times and the sea condition will be rough at times in these sea areas. Wind speed will 20 -30 kmph and can increase up to 45 kmph at times and the sea condition will be fairly rough at times in the other sea areas.

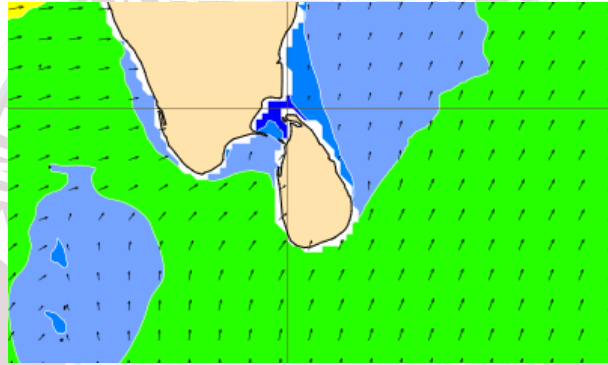
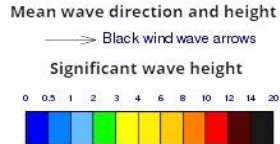
Wind and Rainfall Forecast (Total precipitation for 24 hrs)



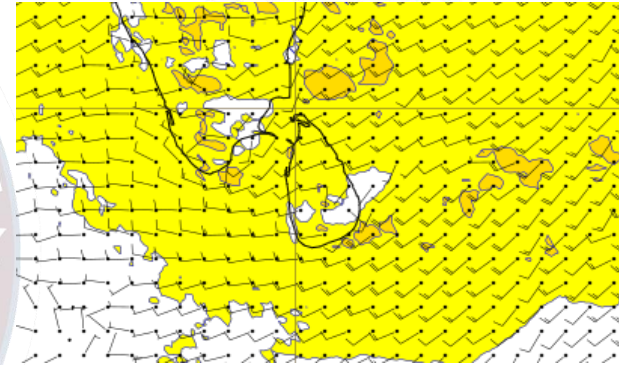
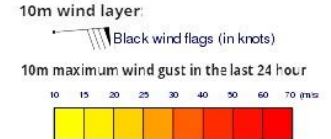
Showers or thundershowers will occur at several places in the sea areas off the coast extending from Puttalam to Matara via Colombo and Galle. Mainly fair weather will prevail in the other sea areas around the island.

Wind speed will be 30-40 kmph in the sea areas extending from Puttalam to Kankasanturai via Mannar and from Hambantota to Pottuvil. Wind speed can increase up to 50 kmph at times and the sea condition will be rough at times in these sea areas. Wind speed will 20 -30 kmph and can increase up to 45 kmph at times and the sea condition will be fairly rough at times in the other sea areas.

Significant wave height (in meters)



Wind Gust (m/s)





Thank you!