

06 DAYS WEATHER FORECAST FOR COASTAL AREAS AROUND SRI LANKA

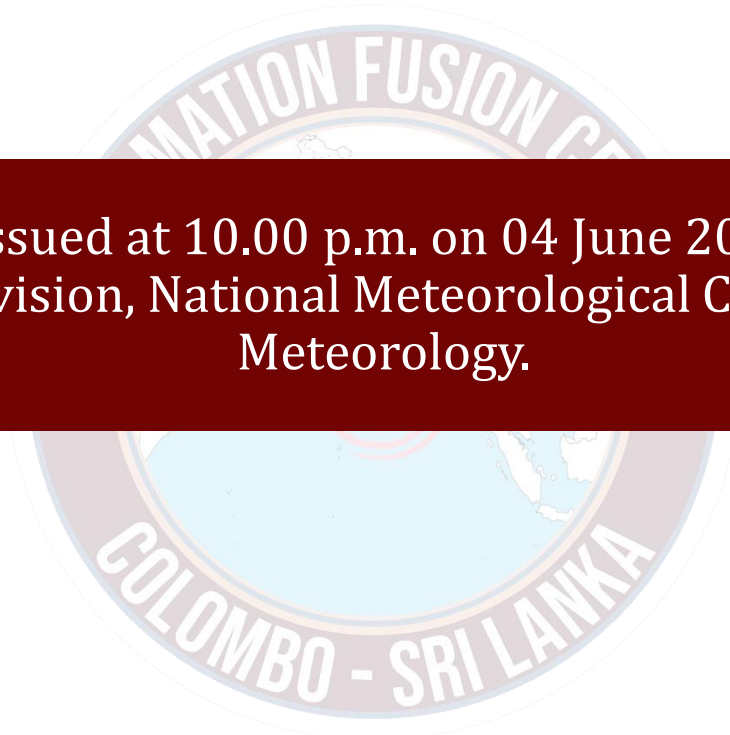
Storm Direction



WARNING

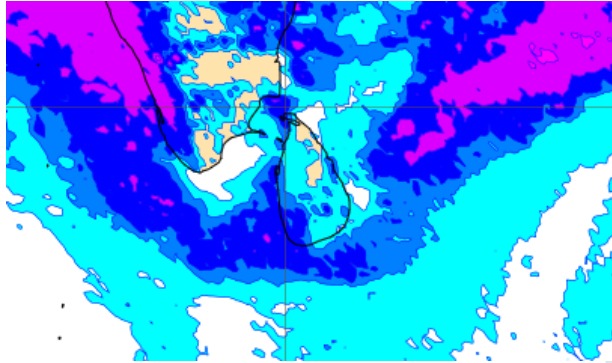
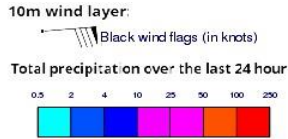


**INFORMATION FUSION CENTRE
COLOMBO**

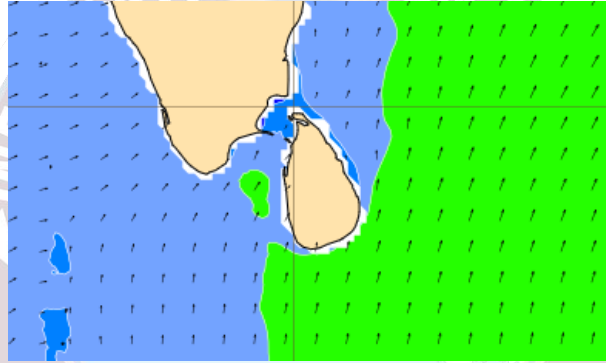
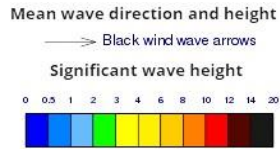


Issued at 10.00 p.m. on 04 June 2024
Marine Weather Division, National Meteorological Centre, Department of
Meteorology.

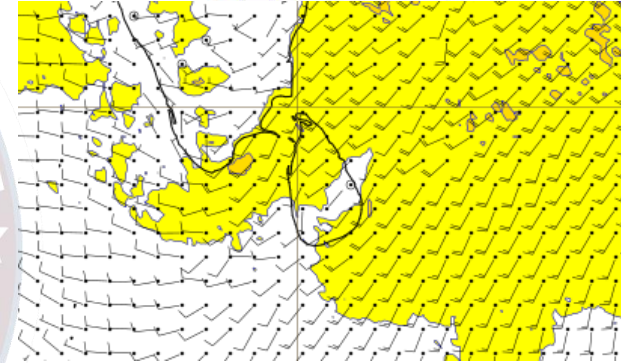
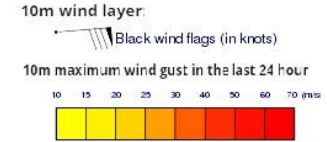
Wind and Rainfall Forecast (Total precipitation for 24 hrs)



Significant wave height (in meters)



Wind Gust (m/s)

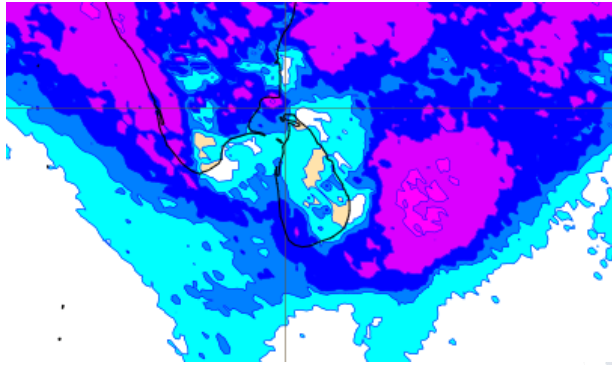
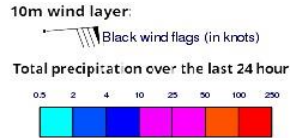


Showers or thundershowers will occur at several places in the sea areas extending from Puttalam to Hambantota via, Colombo and Galle. Showers or thundershowers will occur at a few places in the other sea areas around the island.

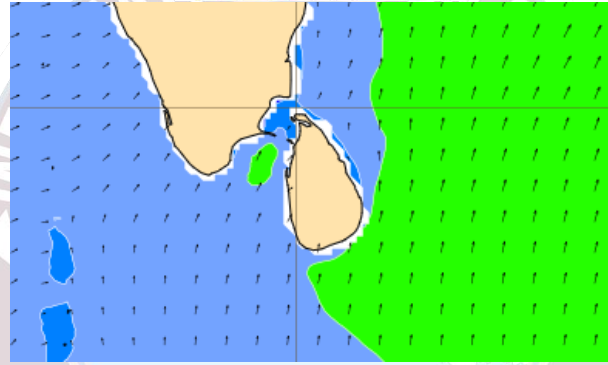
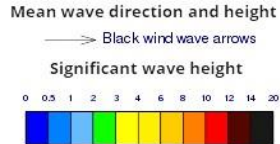
Wind speed will be (30-40) kmph will in the sea areas extending from Hambantota to Pottuvil and from Puttalam to Kalpitiya. Wind speed can increase up to 55 kmph and sea condition can be rough at times in these sea areas.

Wind speed will be (20-30) kmph in the other sea areas around the island. Wind speed may increase up to 45 kmph at times and sea condition can be fairly rough at times in the sea areas extending from Kalpitiya to Hambantota via Colombo and Galle and.

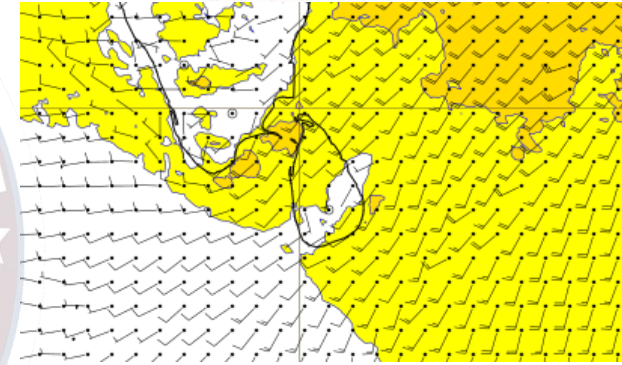
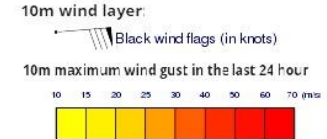
Wind and Rainfall Forecast (Total precipitation for 24 hrs)



Significant wave height (in meters)



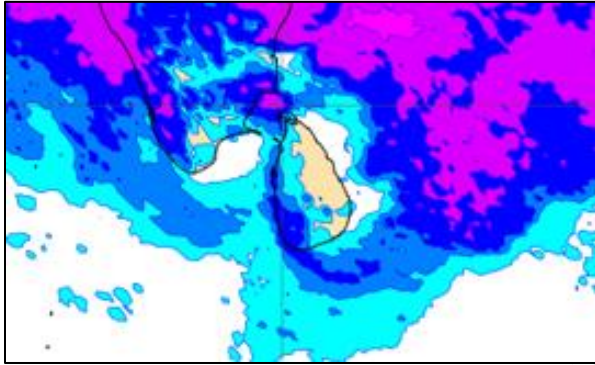
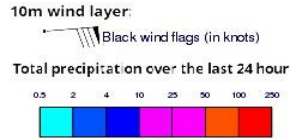
Wind Gust (m/s)



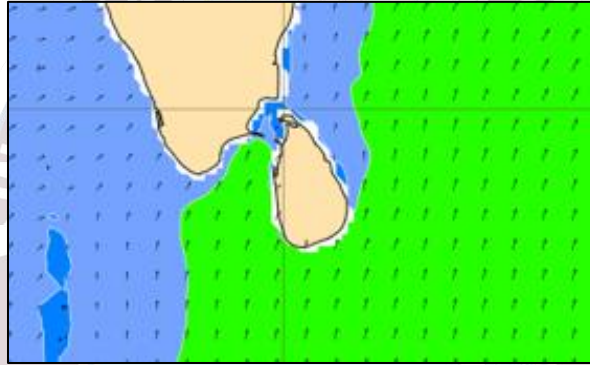
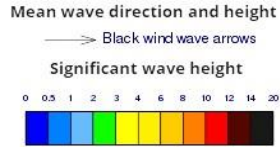
Showers or thundershowers will occur at several places in the sea areas extending from Puttalam to Hambantota via, Colombo and Galle. Showers or thundershowers will occur at a few places in the other sea areas around the island.

Wind speed will be (20-40) kmph will in the sea areas around the island. Wind speed may increase up to (50) kmph at times and sea condition will be rough at times in the sea areas extending from Hambantota to Pottuvil and from Puttalam to Trincomalee via Kalpitriya.

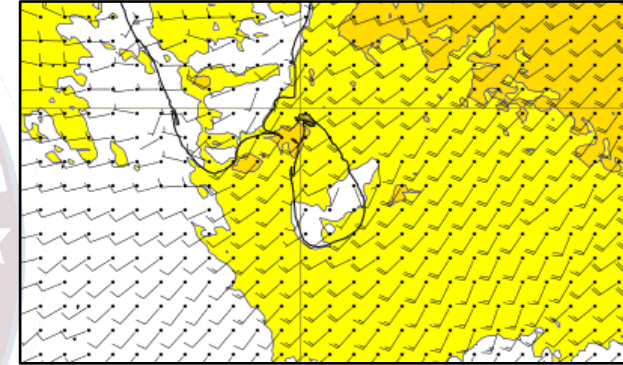
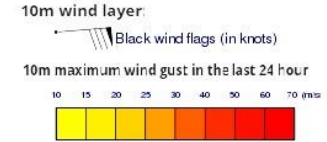
Wind and Rainfall Forecast (Total precipitation for 24 hrs)



Significant wave height (in meters)



Wind Gust (m/s)



Showers or thundershowers will occur at times in the sea areas extending from Puttalam to Matara via, Colombo and Galle. Showers or thundershowers will occur at a few places in the other sea areas around the island.

Wind speed will be (20-40) kmph will in the sea areas around the island. Wind speed may increase up to (50) kmph at times and sea condition will be rough at times in the sea areas extending from Hambantota to Pottuvil and from Puttalam to Trincomalee via Kalpitriya.

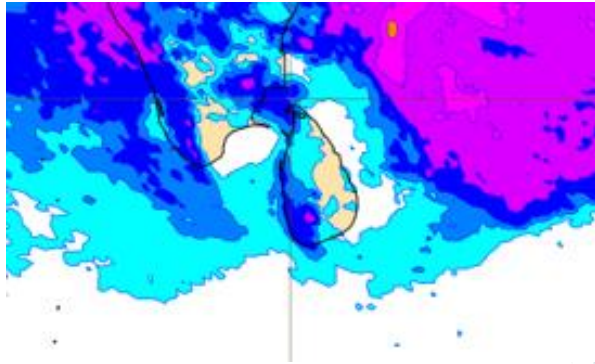
Wind and Rainfall Forecast (Total precipitation for 24 hrs)

10m wind layer:

Black wind flags (in knots)

Total precipitation over the last 24 hour

0.5 2 4 10 25 50 100 200



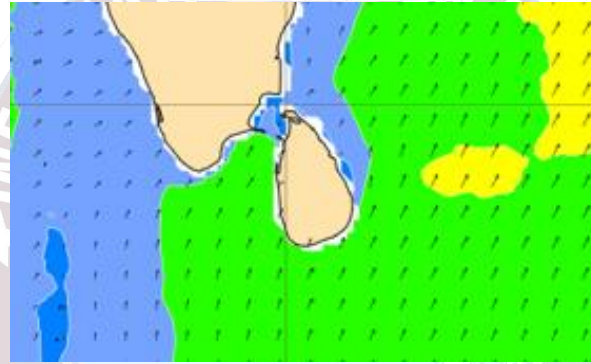
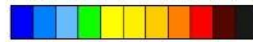
Significant wave height (in meters)

Mean wave direction and height

Black wind wave arrows

Significant wave height

0 0.5 1 2 3 4 6 8 10 12 14 20



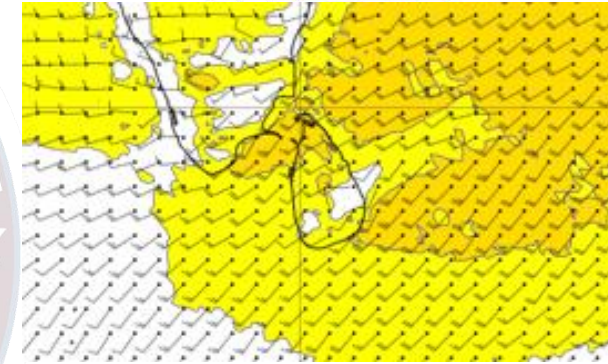
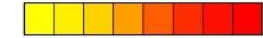
Wind Gust (m/s)

10m wind layer:

Black wind flags (in knots)

10m maximum wind gust in the last 24 hour

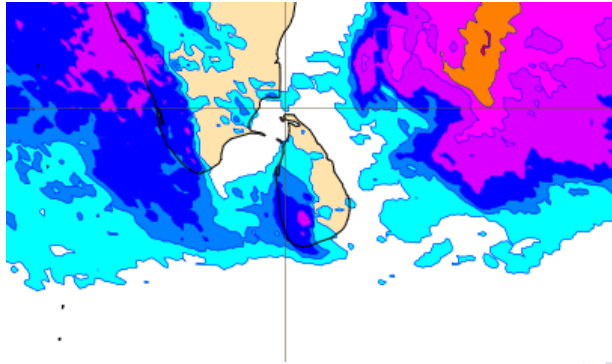
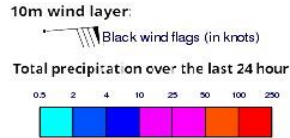
10 15 20 25 30 40 50 60 70 (m/s)



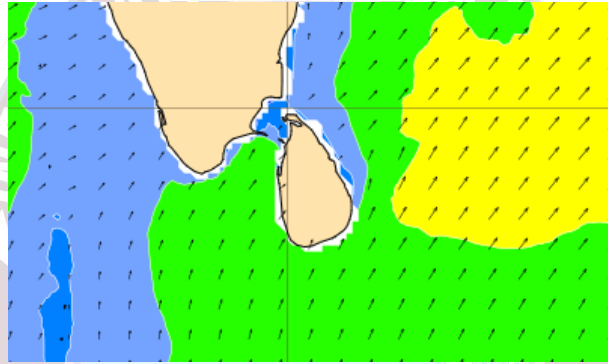
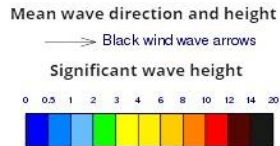
Showers or thundershowers will occur at times in the sea areas extending from Puttalam to Matara via, Colombo and Galle. Showers or thundershowers will occur at a few places in the other sea areas around the island.

Wind speed will be (20-40) kmph will in the sea areas around the island. Wind speed may increase up to (50) kmph at times in these sea areas and the sea condition will be rough at times.

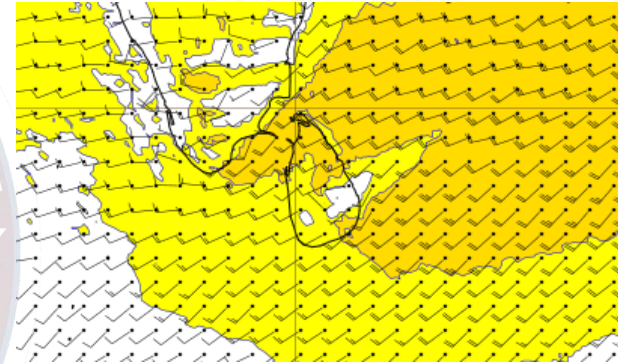
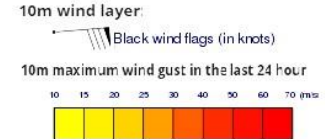
Wind and Rainfall Forecast (Total precipitation for 24 hrs)



Significant wave height (in meters)



Wind Gust (m/s)

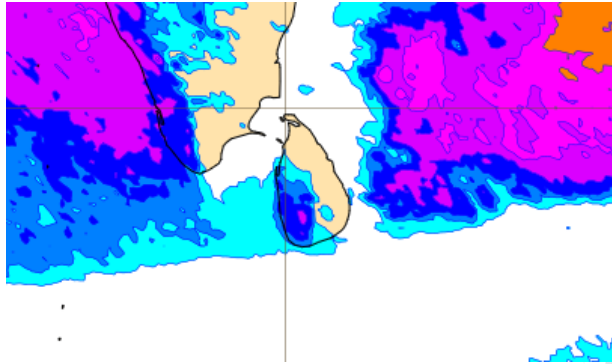
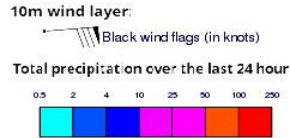


Showers or thundershowers will occur at several places in the sea areas extending from Puttalam to Hambantota via, Colombo and Galle. Mainly fair weather will prevail the other sea areas around the island.

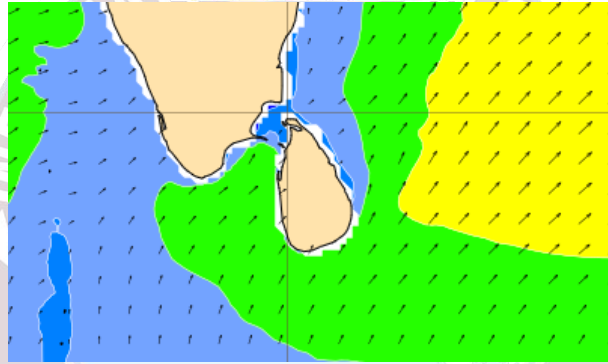
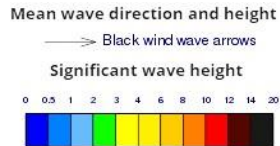
Wind speed will be (20-40) kmph will in the sea areas earound the island. Wind speed may increase up to (50-60) kmph at times in these sea areas and the sea condition will be rough at times.

Naval and fishing communities in other sea area are requested to be vigilant in this regard.

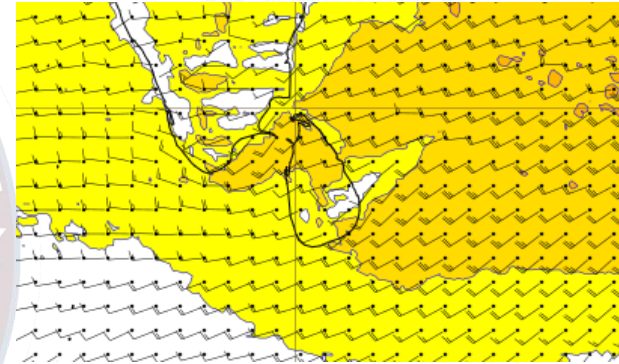
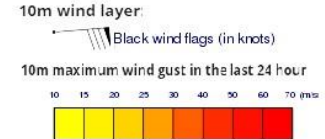
Wind and Rainfall Forecast (Total precipitation for 24 hrs)



Significant wave height (in meters)



Wind Gust (m/s)



Showers or thundershowers will occur at several places in the sea areas extending from Puttalam to Hambantota via, Colombo and Galle. Mainly fair weather will prevail the other sea areas around the island.

Wind speed will be (20-40) kmph will in the sea areas earound the island. Wind speed may increase up to (50-60) kmph at times in these sea areas and the sea condition will be rough at times.

Naval and fishing communities in other sea area are requested to be vigilant in this regard.



Thank you!