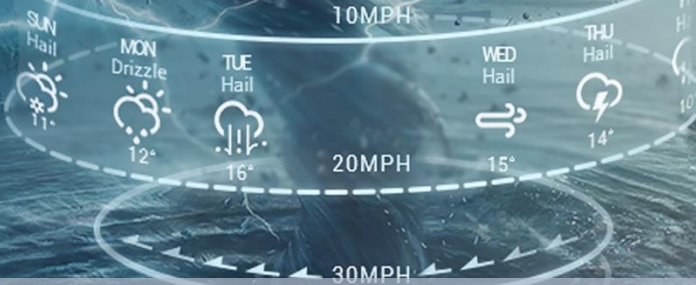


# 08 DAYS WEATHER FORECAST FOR COASTAL AREAS AROUND SRI LANKA

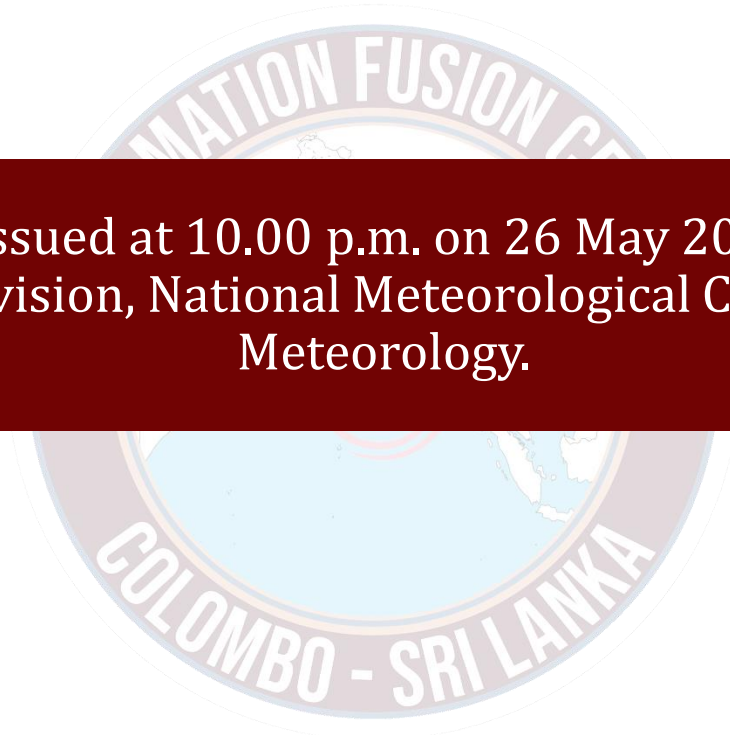
Storm Direction



WARNING

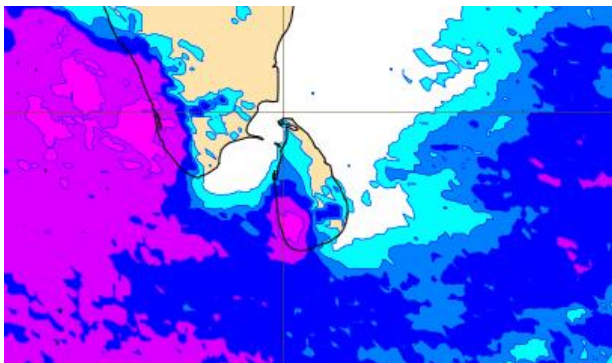
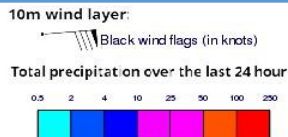


**INFORMATION FUSION CENTRE  
COLOMBO**

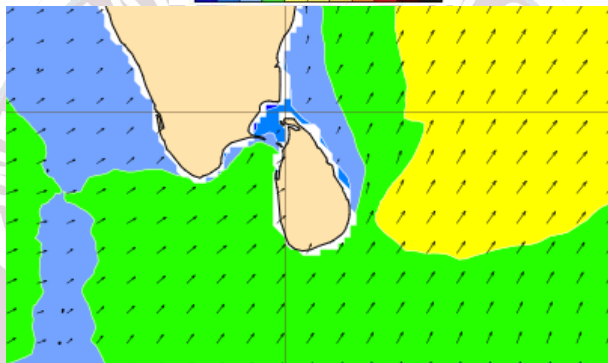
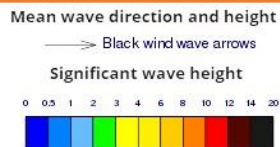


Issued at 10.00 p.m. on 26 May 2024  
Marine Weather Division, National Meteorological Centre, Department of  
Meteorology.

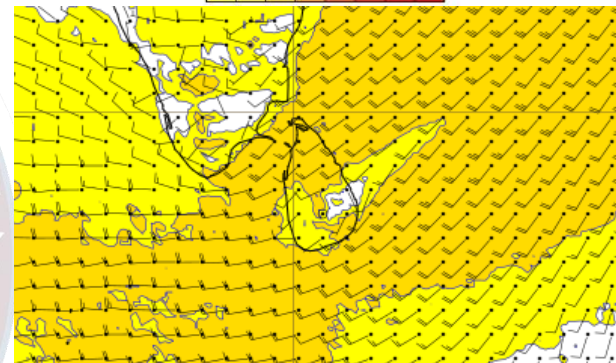
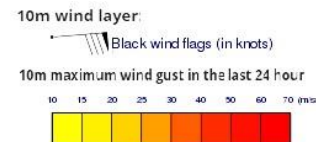
## Wind and Rainfall Forecast (Total precipitation for 24 hrs)



## Significant wave height (in meters)



## Wind Gust (m/s)



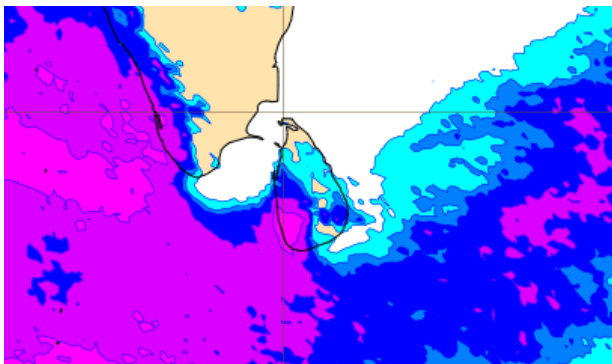
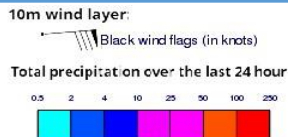
Showers or thundershowers will occur at times in the sea areas extending from Mannar to Hambantota via Colombo and Galle, heavy showers are likely at some places. Showers or thundershowers will occur at several places in the other sea areas around the island.

Wind speed will be (40-50) kmph will in the sea areas extending from Kalpitiya to Pottuvil via Colombo, Galle and Hambantota. Wind speed may increase up to (60-70) kmph at times in these sea areas and the sea condition will be very rough at times. Naval and fishing communities are advised not to venture into these sea areas.

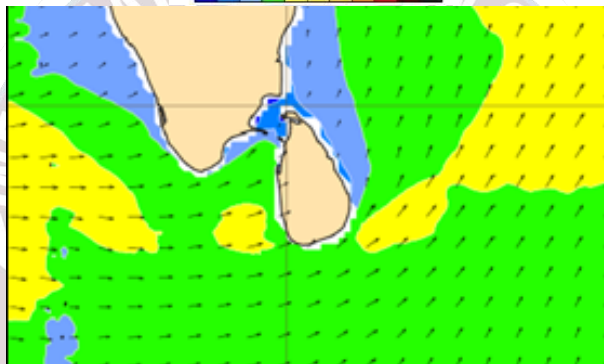
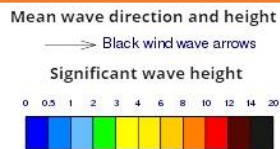
Wind speed will be (30-40) kmph in the other sea areas and can be increased up to 50-60 kmph at times and sea condition can be rough at times. The swell waves (about 2.5 m – 3.0 m) height (This is not for land area) may increase in the sea areas off the coast extending from Kalpitiya to Pottuvil via Colombo, Galle, and Hambantota.

Naval and fishing communities in other sea area are requested to be vigilant in this regard.

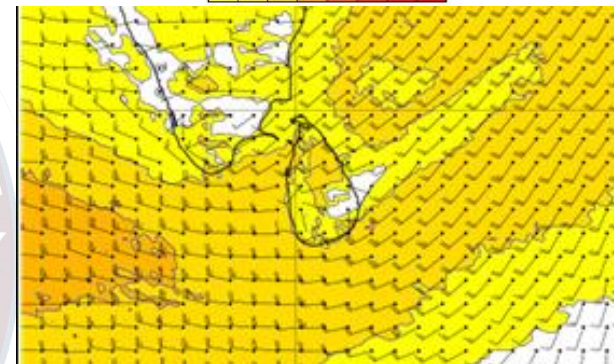
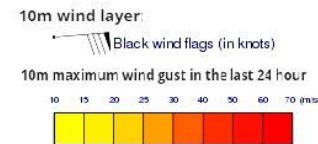
## Wind and Rainfall Forecast (Total precipitation for 24 hrs)



## Significant wave height (in meters)



## Wind Gust (m/s)



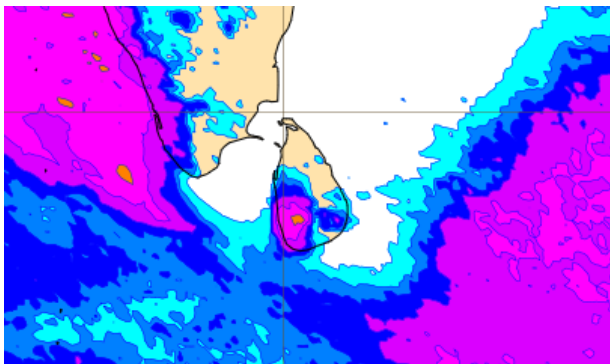
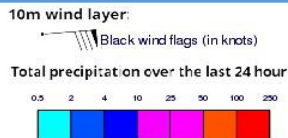
Showers or thundershowers will occur at times in the sea areas extending from Puttalam to Matara via, Colombo and Galle. Showers or thundershowers will occur at a few places in the other sea areas around the island.

Wind speed will be (35-45) kmph will in the sea areas extending from Kalpitiya to Pottuvil via Colombo, Galle and Hambantota. Wind speed may increase up to (60-70) kmph at times in these sea areas and the sea condition will be very rough at times. Naval and fishing communities are advised not to venture into these sea areas.

Wind speed will be (25-35) kmph in the other sea areas and can be increased up to 50 kmph at times and sea condition can be rough at times. The swell waves (about 2.5 m – 3.0 m) height (This is not for land area) may increase in the sea areas off the coast extending from Kalpitiya to Pottuvil via Colombo, Galle, and Hambantota.

Naval and fishing communities in other sea area are requested to be vigilant in this regard.

## Wind and Rainfall Forecast (Total precipitation for 24 hrs)



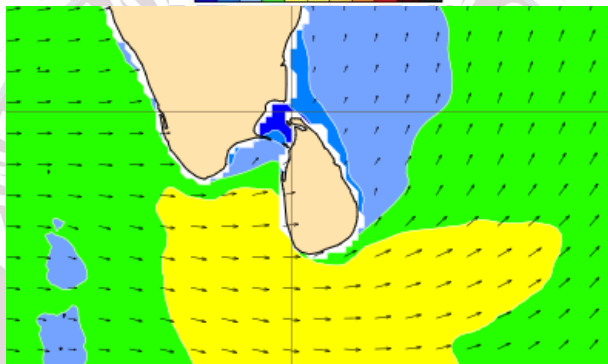
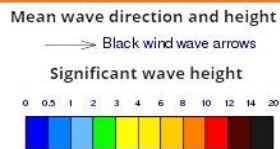
Showers or thundershowers will occur at times in the sea areas extending from Puttalam to Matara via, Colombo and Galle. Showers or thundershowers will occur at a few places in the other sea areas around the island.

Wind speed will be (40-50) kmph will in the sea areas extending from Kalpitiya to Pottuvil via Colombo, Galle and Hambantota. Wind speed may increase up to (60-70) kmph at times in these sea areas and the sea condition will be very rough at times. Naval and fishing communities are advised not to venture into these sea areas.

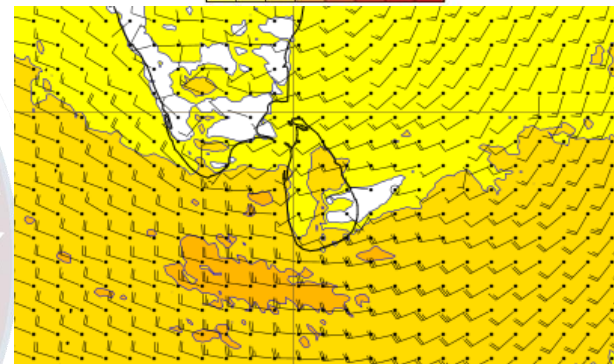
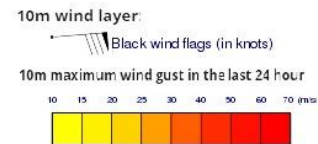
Wind speed will be (30-40) kmph in the other sea areas and can be increased up to 50-60 kmph at times and sea condition can be rough at times. The swell waves (about 2.5 m – 3.0 m) height (This is not for land area) may increase in the sea areas off the coast extending from Kalpitiya to Pottuvil via Colombo, Galle, and Hambantota.

Naval and fishing communities in other sea area are requested to be vigilant in this regard.

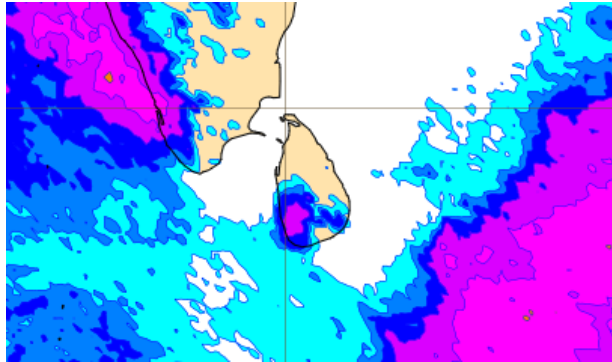
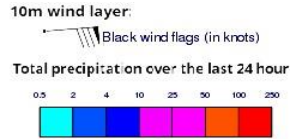
## Significant wave height (in meters)



## Wind Gust (m/s)



## Wind and Rainfall Forecast (Total precipitation for 24 hrs)



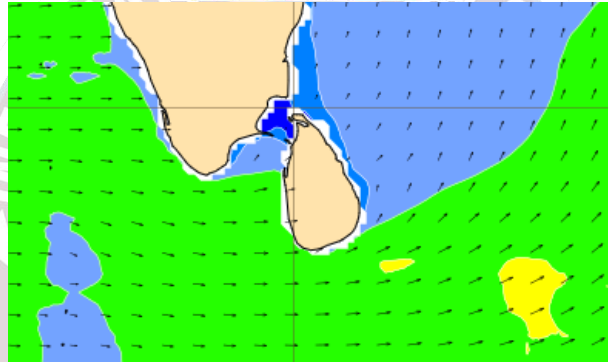
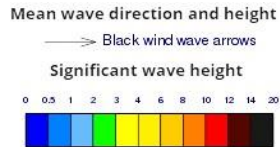
Showers or thundershowers will occur at several places in the sea areas extending from Colombo to Matara via, Galle. Mainly fair weather will prevail in the other sea areas around the island.

Wind speed will be (40-50) kmph will in the sea areas extending from Kalpitiya to Pottuvil via Colombo, Galle and Hambantota. Wind speed may increase up to (65) kmph at times in these sea areas and the sea condition will be very rough at times.

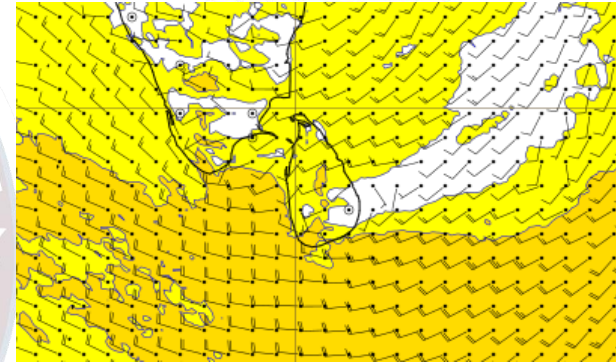
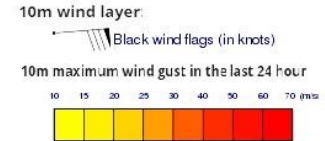
Wind speed will be (30-40) kmph in the other sea areas and can be increased up to 50 kmph at times and sea condition can be rough at times. The swell waves (about 2.5 m – 3.0 m) height (This is not for land area) may increase in the sea areas off the coast extending from Kalpitiya to Pottuvil via Colombo, Galle, and Hambantota.

Naval and fishing communities in other sea area are requested to be vigilant in this regard.

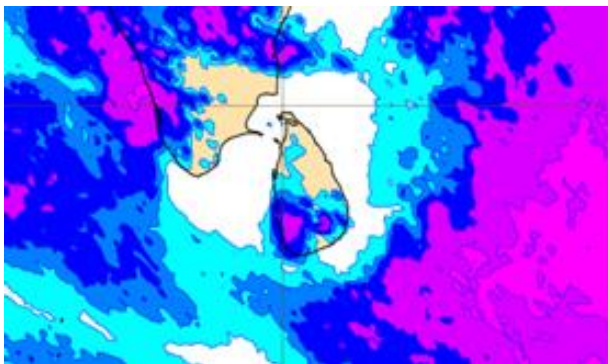
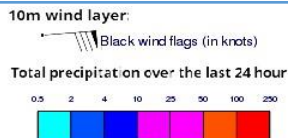
## Significant wave height (in meters)



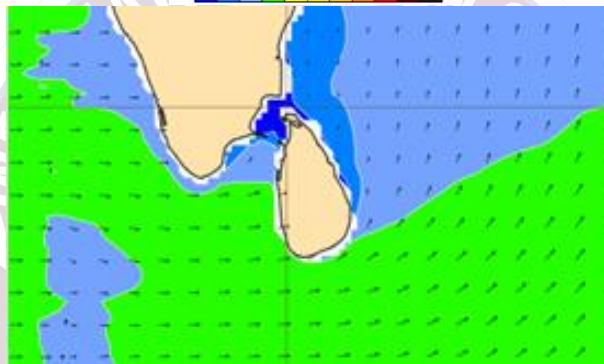
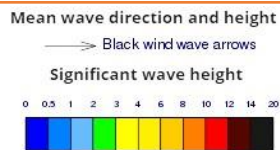
## Wind Gust (m/s)



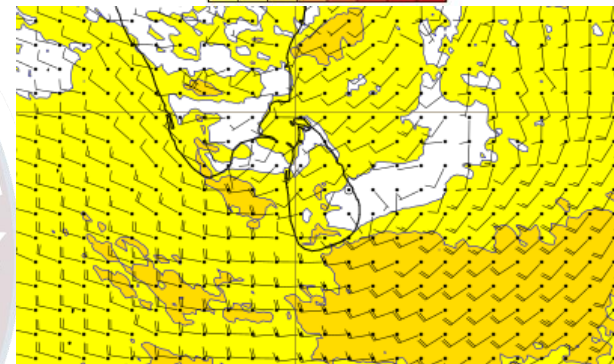
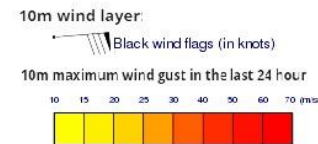
## Wind and Rainfall Forecast (Total precipitation for 24 hrs)



## Significant wave height (in meters)



## Wind Gust (m/s)

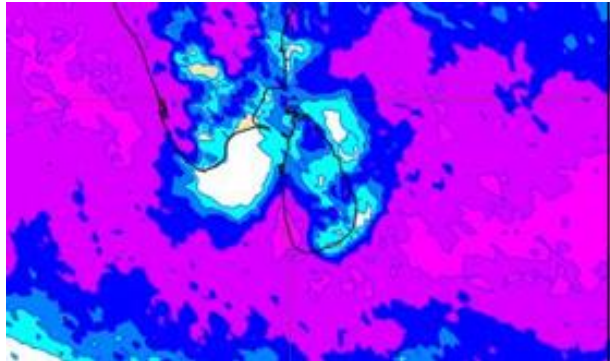
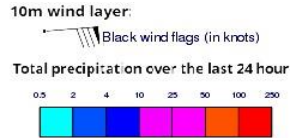


Showers or thundershowers will occur at several places in the sea areas extending from Colombo to Matara via, Galle. Mainly fair weather will prevail in the other sea areas around the island.

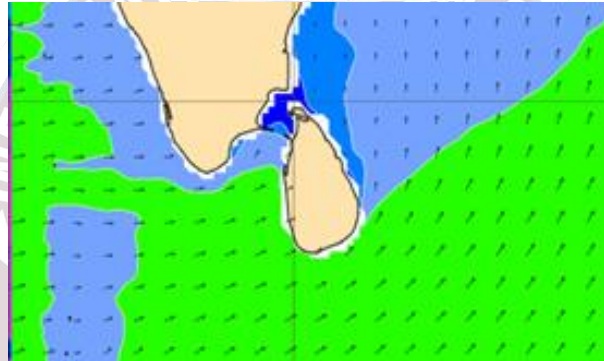
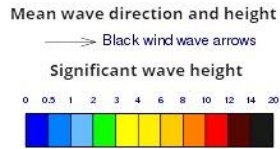
Wind speed will be (30-40) kmph will in the sea areas extending from Mannar to Pottuvil via Colombo, Galle and Hambantota. Wind speed may increase up to (60) kmph at times and the sea condition will be rough at times in these sea areas Wind speed will be (20-30) kmph in the other sea areas and can be increased up to 50 kmph at times and sea condition can be rough at times.

Naval and fishing communities are also requested to be attentive in this regard.

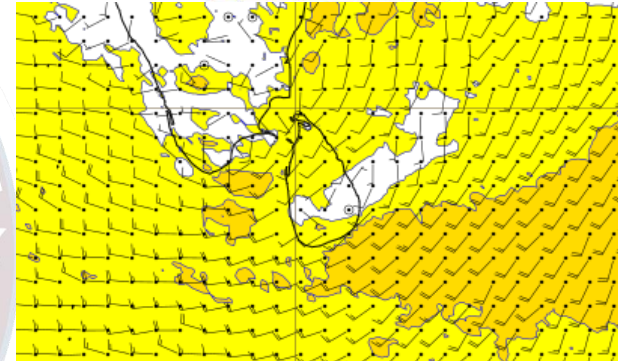
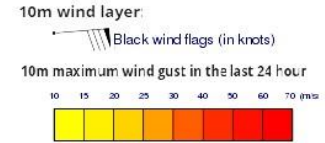
## Wind and Rainfall Forecast (Total precipitation for 24 hrs)



## Significant wave height (in meters)



## Wind Gust (m/s)



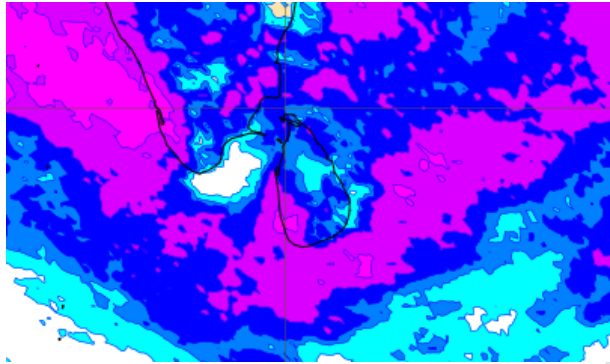
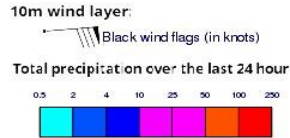
Showers or thundershowers will occur at times in the sea areas extending from Mannar to Hambantota via Colombo and Galle. Showers or thundershowers will occur at several places in the other sea areas around the island.

Wind speed will be (30-40) kmph will in the sea areas extending from Puttalam to Hambantota via Colombo, Galle. Wind speed may increase up to (50-60) kmph at times and the sea condition will be rough at times in these sea areas. Wind speed will be (20-30) kmph in the other sea areas and can be increased up to 50 kmph at times and sea condition can be rough at times.

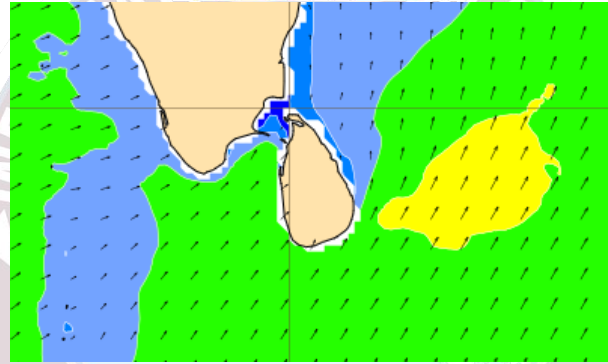
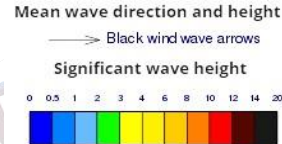
Naval and fishing communities are also requested to be attentive in this regard.



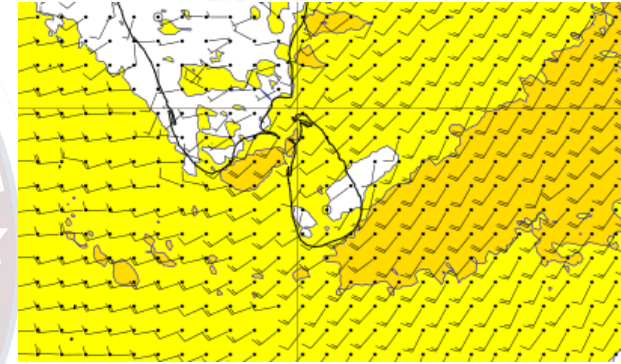
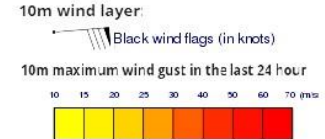
## Wind and Rainfall Forecast (Total precipitation for 24 hrs)



## Significant wave height (in meters)



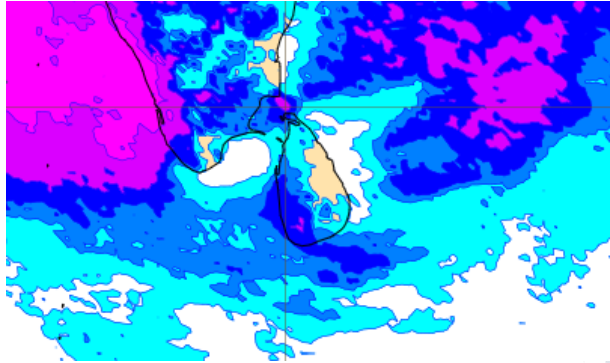
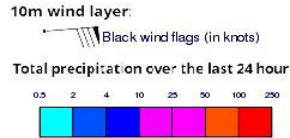
## Wind Gust (m/s)



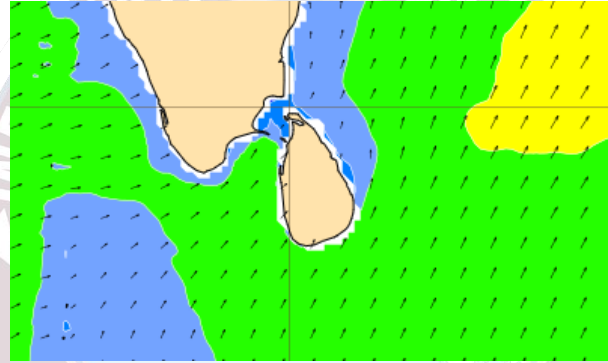
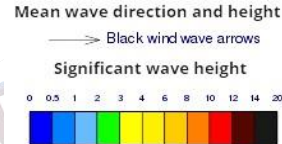
Showers or thundershowers will occur at times in the sea areas extending from Mannar to Hambantota via Colombo and Galle. Showers or thundershowers will occur at several places in the other sea areas around the island.

Wind speed will be (25-35) kmph will in the sea areas extending from Puttalam to Kankasanturai via Mannar and from Galle to Hambantota via Matara. Wind speed may increase up to (60) kmph at times in these sea areas and the sea condition will be rough at times. Wind speed will be (20-30) kmph in the other sea areas and can be increased up to 45 kmph at times and sea condition can be Fairly rough at times.

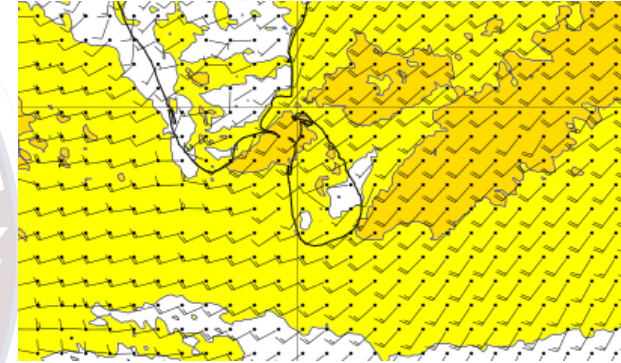
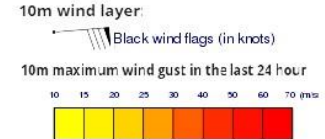
## Wind and Rainfall Forecast (Total precipitation for 24 hrs)



## Significant wave height (in meters)



## Wind Gust (m/s)



Showers or thundershowers will occur at times in the sea areas extending from Puttalam to Matara via, Colombo and Galle. Showers or thundershowers will occur at a few places in the other sea areas around the island.

Wind speed will be (25-35) kmph will in the sea areas extending from Puttalam to Trincomalee via Kankasanturai and from Galle to Hambantota via Matara. Wind speed may increase up to (60) kmph at times in these sea areas and the sea condition will be rough at times. Wind speed will be (20-30) kmph in the other sea areas and can be increased up to 45 kmph at times and sea condition can be Fairly rough at times.



Thank you!