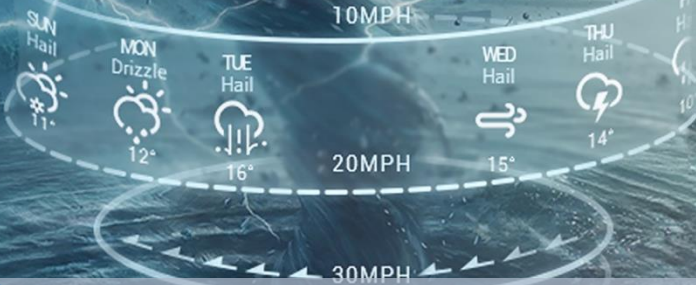


08 DAYS WEATHER FORECAST FOR COASTAL AREAS AROUND SRI LANKA

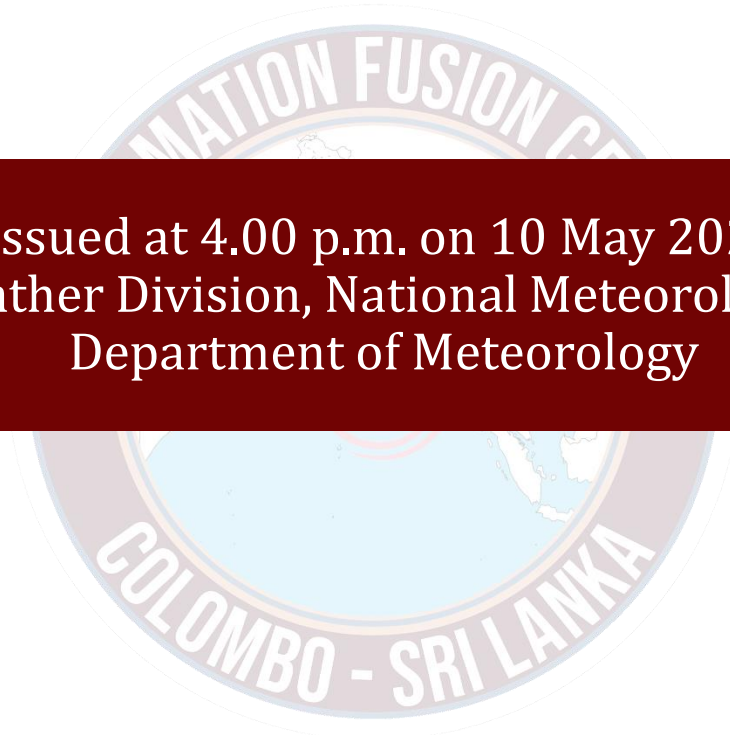
Storm Direction



WARNING

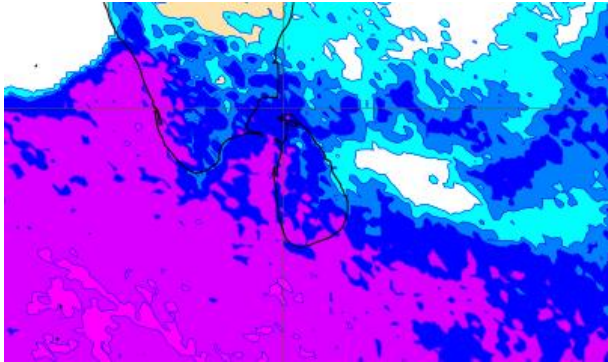
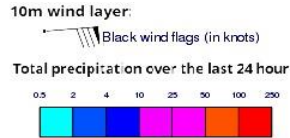


**INFORMATION FUSION CENTRE
COLOMBO**

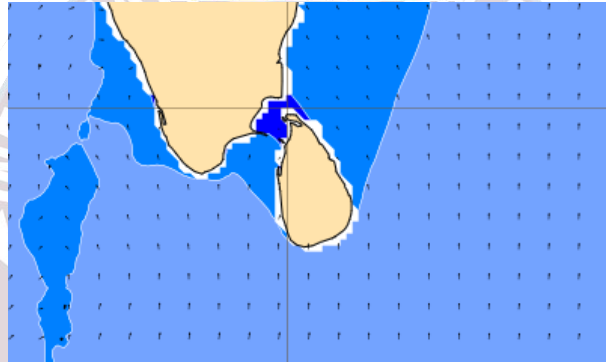
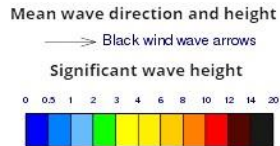


Issued at 4.00 p.m. on 10 May 2024
Marine Weather Division, National Meteorological Centre
Department of Meteorology

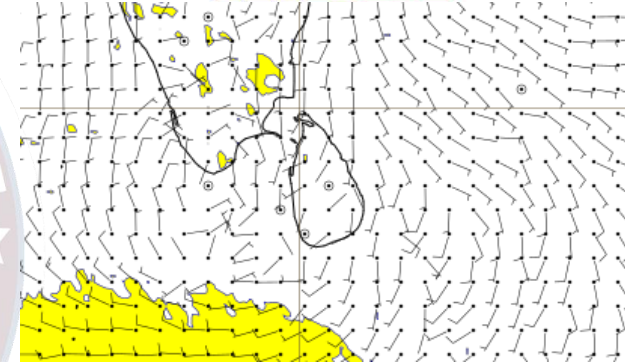
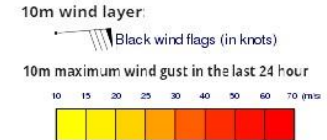
Wind and Rainfall Forecast (Total precipitation for 24 hrs)



Significant wave height (in meters)



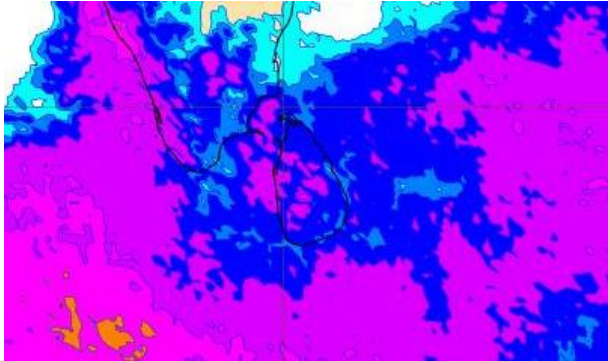
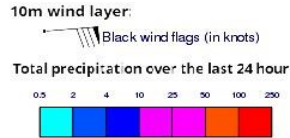
Wind Gust (m/s)



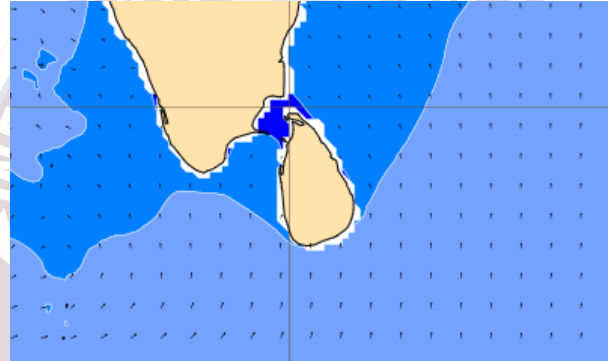
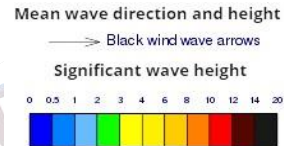
Showers or thundershowers will occur at several places in the sea areas off the coast extending from Mannar to Hambantota via Colombo and Galle in the evening or night. Showers or thundershowers will occur at a few places in the other sea areas around the island.

Wind speed will be 20-30 kmph in the sea areas around the island.

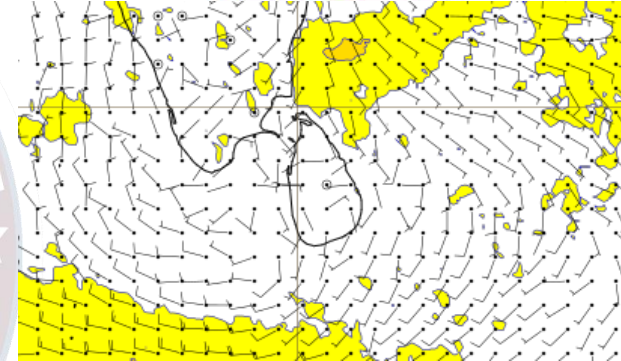
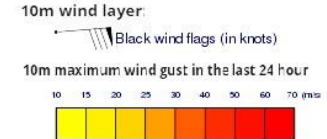
Wind and Rainfall Forecast (Total precipitation for 24 hrs)



Significant wave height (in meters)

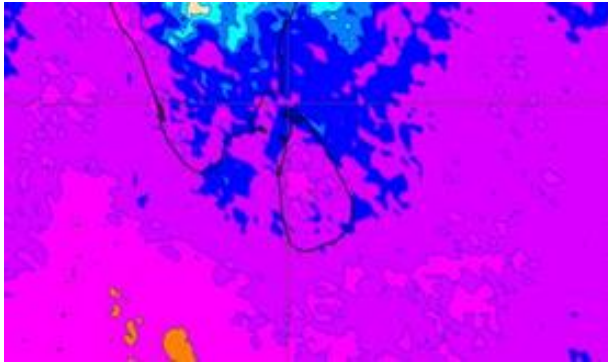
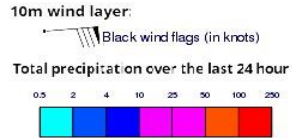


Wind Gust (m/s)

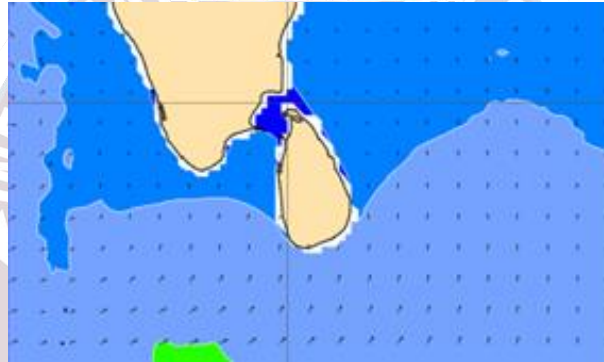
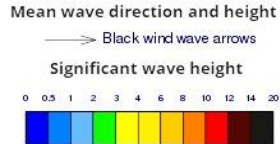


Showers or thundershowers will occur at several places in the sea areas around the island in the evening or night.
Wind speed will be 20-35 kmph in the sea areas around the island.

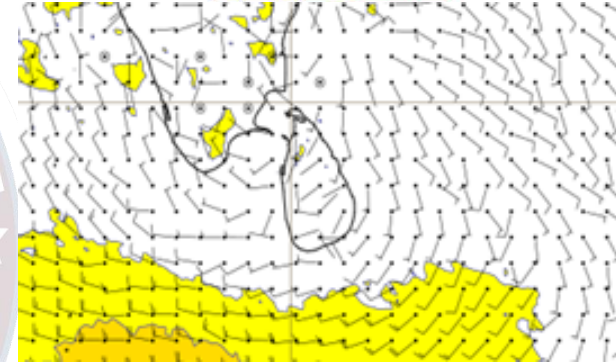
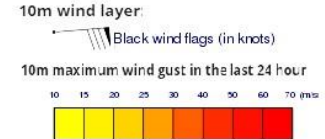
Wind and Rainfall Forecast (Total precipitation for 24 hrs)



Significant wave height (in meters)



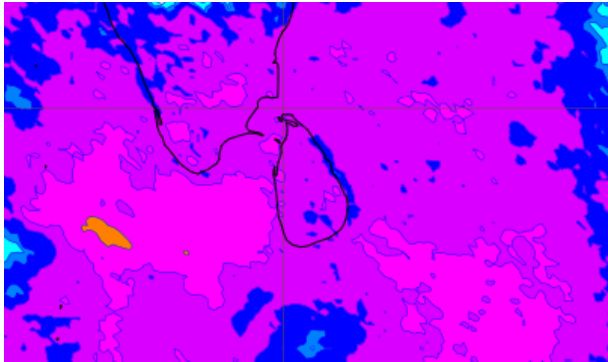
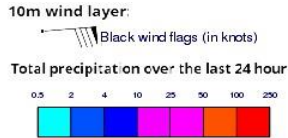
Wind Gust (m/s)



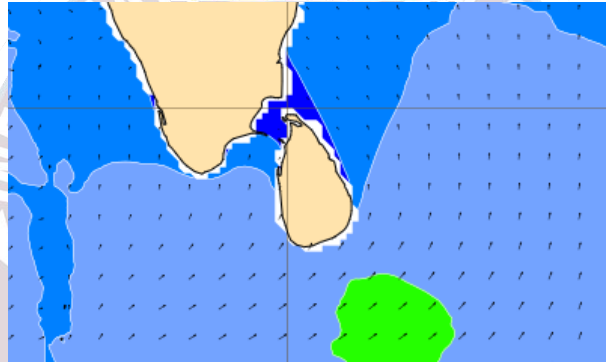
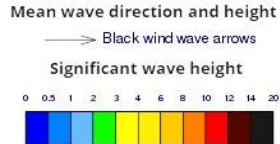
Showers or thundershowers will occur at times in the sea areas around the island.

Wind speed will be 20-35 kmph in the sea areas around the island.

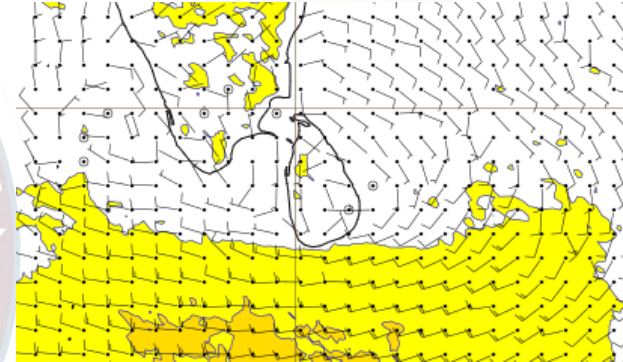
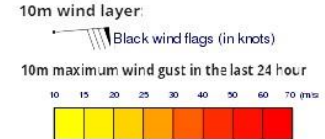
Wind and Rainfall Forecast (Total precipitation for 24 hrs)



Significant wave height (in meters)



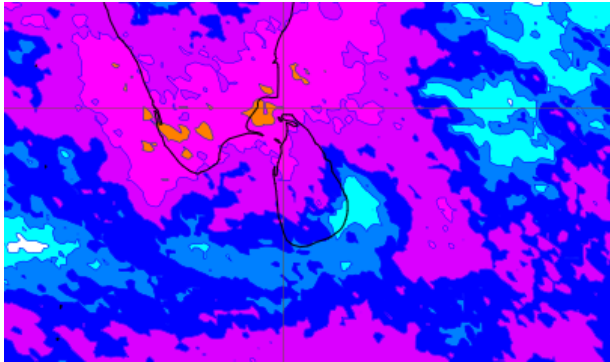
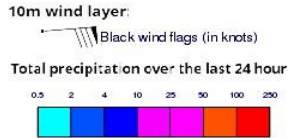
Wind Gust (m/s)



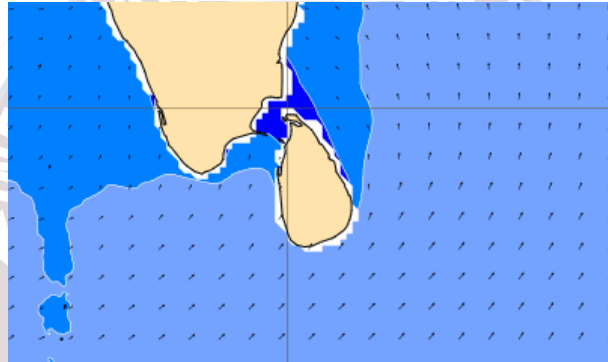
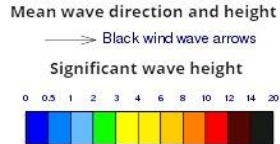
Showers or thundershowers will occur at times in the sea areas around the island.

Wind speed will be 20-30 kmph in the sea areas around the island. Wind speed can be increased up to 45 kmph at times and sea condition will be rough at times in the sea areas extending from Galle to Hambantota via Matara.

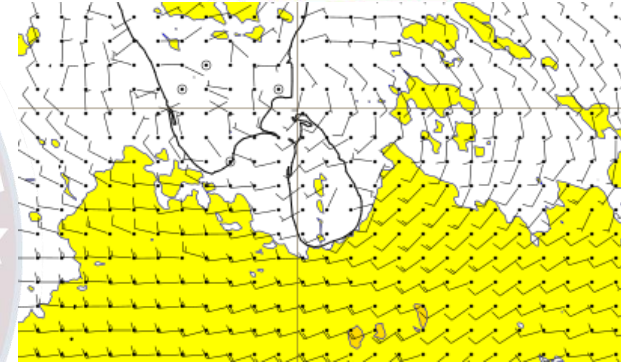
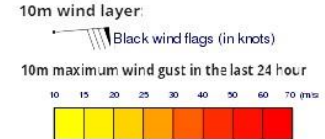
Wind and Rainfall Forecast (Total precipitation for 24 hrs)



Significant wave height (in meters)



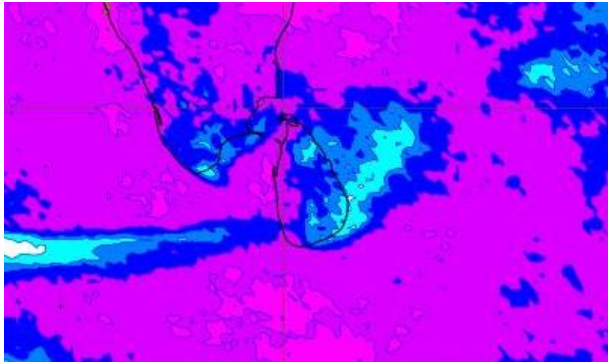
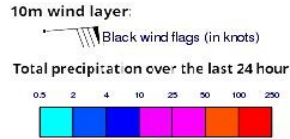
Wind Gust (m/s)



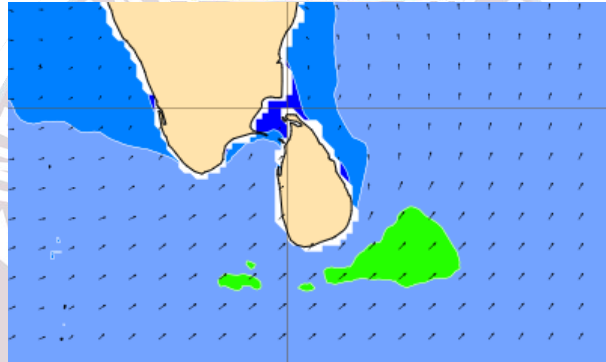
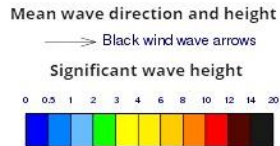
Showers or thundershowers will occur at times in the sea areas around the island.

Wind speed will be 20-30 kmph in the sea areas around the island. Wind speed can be increased up to 45 kmph at times and sea condition will be rough at times in the sea areas extending from Galle to Pottuvil via Matara.

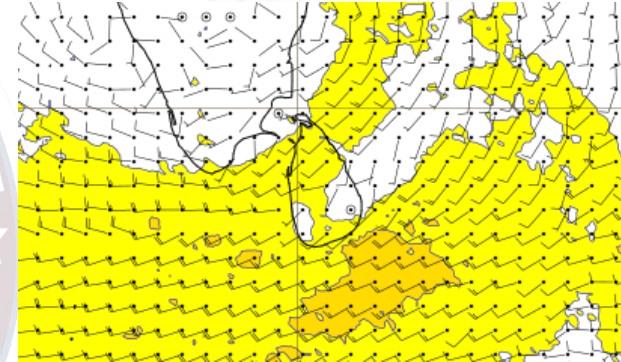
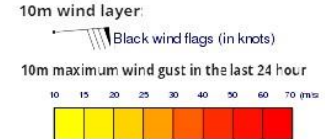
Wind and Rainfall Forecast (Total precipitation for 24 hrs)



Significant wave height (in meters)



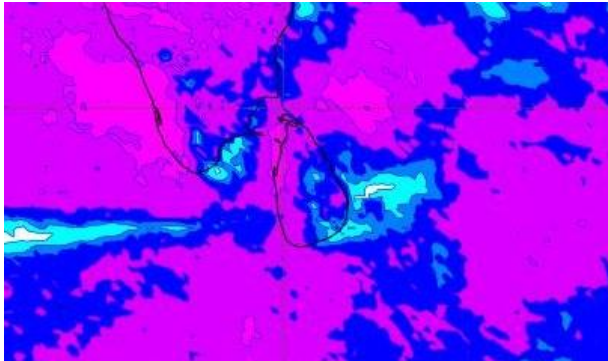
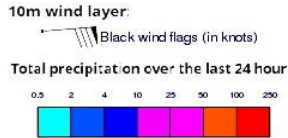
Wind Gust (m/s)



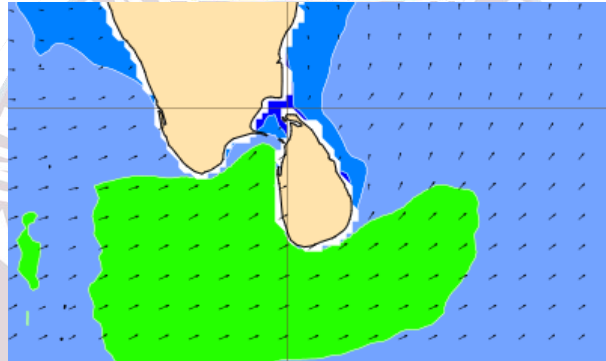
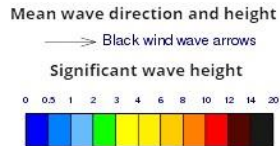
Showers or thundershowers will occur at times in the sea areas around the island.

Wind speed will be 20-30 kmph in the sea areas around the island. Wind speed can be increased up to 50 kmph at times and sea condition will be rough at times in the sea areas extending from Galle to Hambantota via Matara. Wind speed can be increased up to 45 kmph at times and sea condition will be fairly rough at times in the other sea areas around the island except from Trincomalee to Batticaloa.

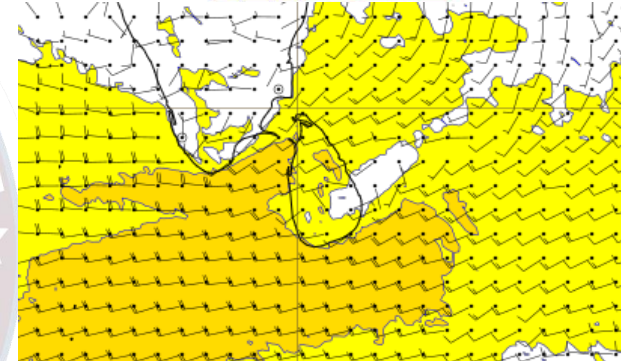
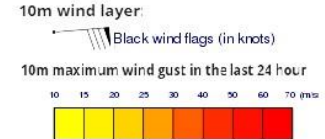
Wind and Rainfall Forecast (Total precipitation for 24 hrs)



Significant wave height (in meters)



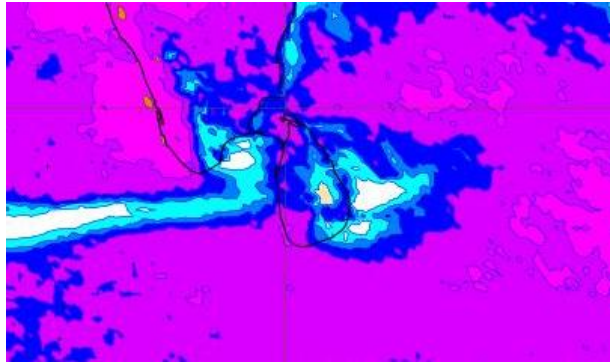
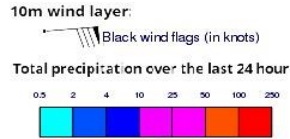
Wind Gust (m/s)



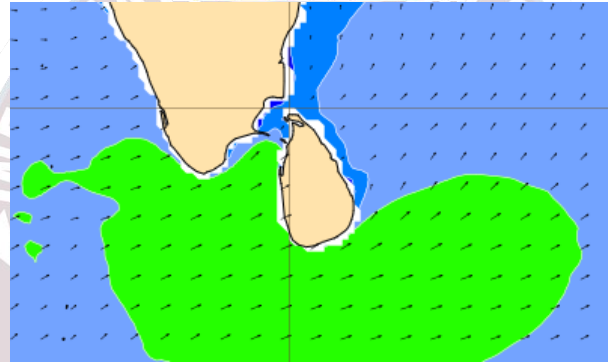
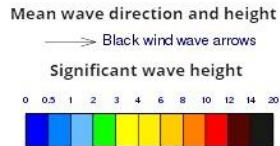
Showers or thundershowers will occur at times in the sea areas around the island.

Wind speed will be 20-30 kmph in the sea areas around the island. Wind speed can be increased up to 50-60 kmph at times and sea condition will be rough at times in the sea areas extending from Mannar to Hambantota via Colombo and Galle. Wind speed can be increased up to 45 kmph at times and sea condition will be fairly rough at times in the other sea areas around the island.

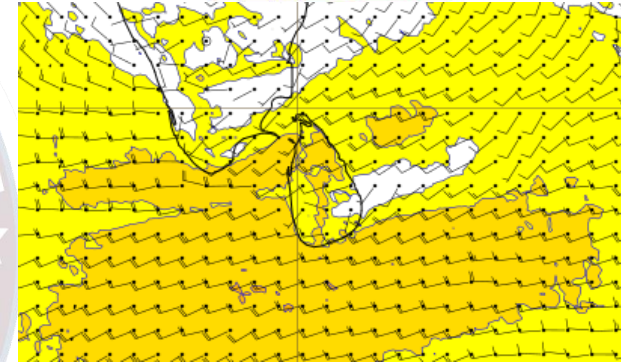
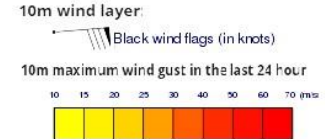
Wind and Rainfall Forecast (Total precipitation for 24 hrs)



Significant wave height (in meters)



Wind Gust (m/s)



Showers or thundershowers will occur at times in the sea areas around the island.

Wind speed will be 20-30 kmph in the sea areas around the island. Wind speed can be increased up to 50-60 kmph at times and sea condition will be rough at times in the sea areas extending from Mannar to Hambantota via Colombo and Galle. Wind speed can be increased up to 45 kmph at times and sea condition will be fairly rough at times in the other sea areas around the island.



Thank you!