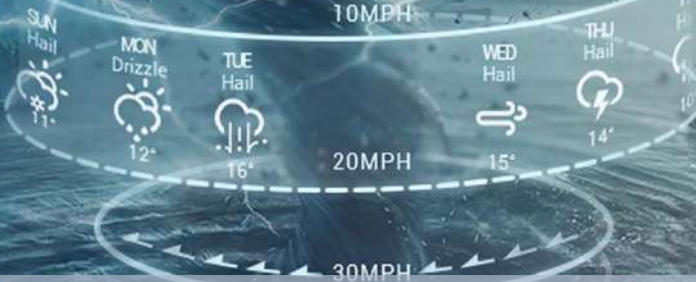


06 DAYS WEATHER FORECAST FOR COASTAL AREAS AROUND SRI LANKA

Storm Direction

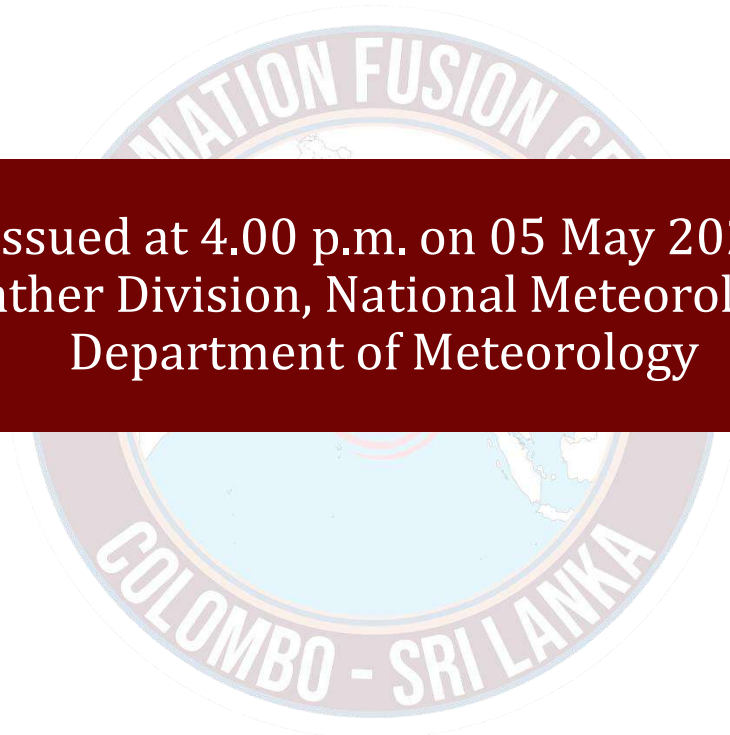


WARNING



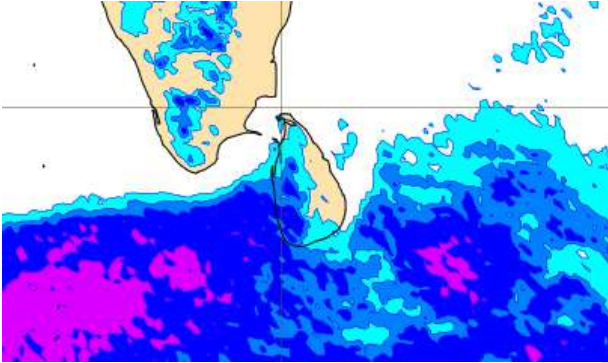
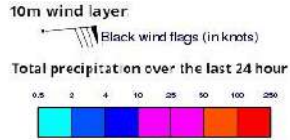
**INFORMATION FUSION CENTRE
COLOMBO**

Know weather before it can

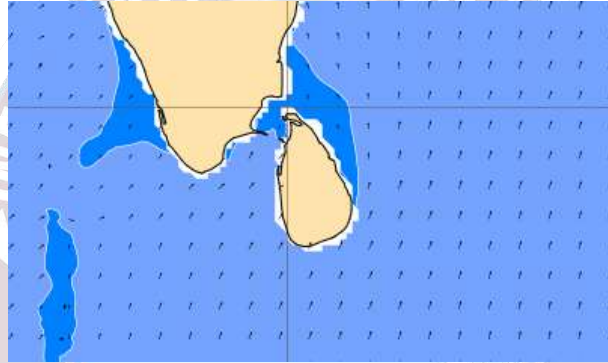
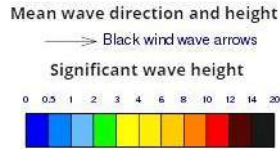


Issued at 4.00 p.m. on 05 May 2024
Marine Weather Division, National Meteorological Centre
Department of Meteorology

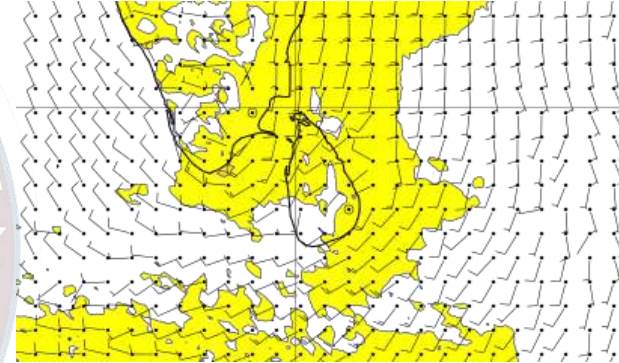
Wind and Rainfall Forecast (Total precipitation for 24 hrs)



Significant wave height (in meters)



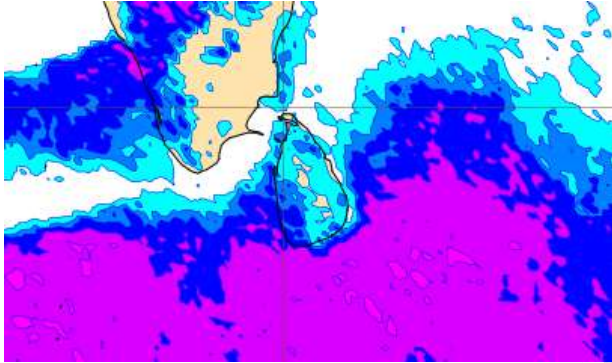
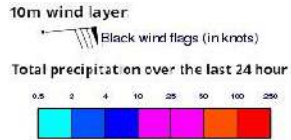
Wind Gust (m/s)



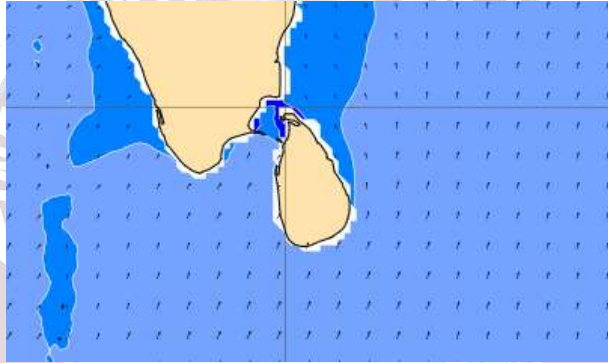
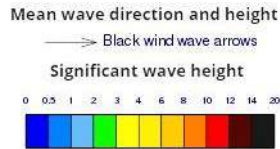
Showers or thundershowers will occur at several places in the sea areas off the coast extending from Puttalam to Hambantota via Colombo and Galle via in the evening or night. Mainly fair weather will prevail in the other sea areas around the island.

Wind speed will be 20-30 kmph in the sea areas around the island. Wind speed can be increased up to 45 kmph at times and sea condition will be fairly rough at times in the sea areas except from Colombo to Galle.

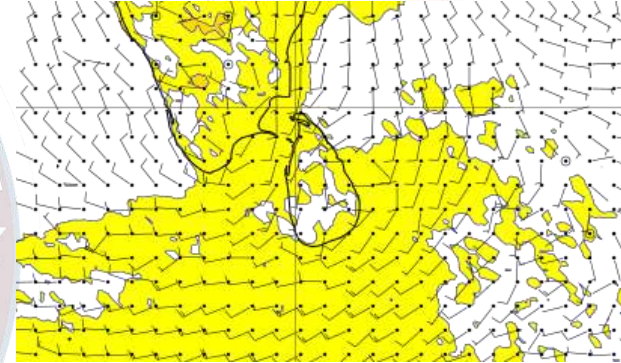
Wind and Rainfall Forecast (Total precipitation for 24 hrs)



Significant wave height (in meters)



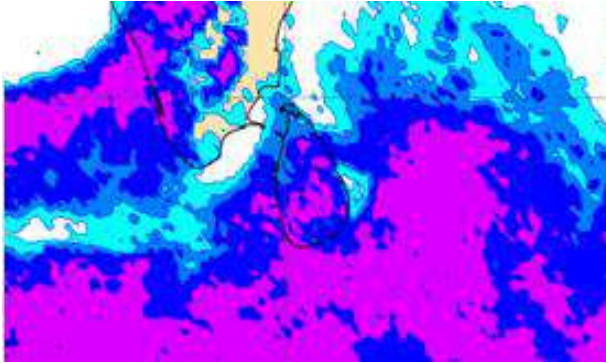
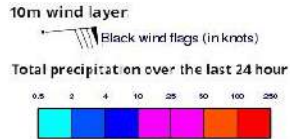
Wind Gust (m/s)



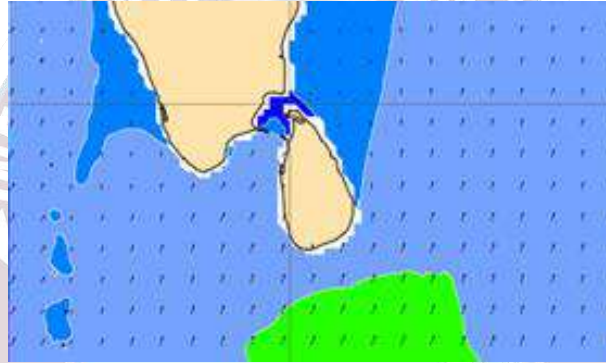
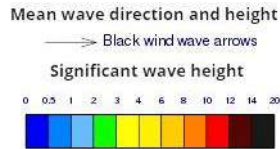
Showers or thundershowers will occur at several places in the sea areas off the coast extending from Puttalam to Hambantota via Colombo and Galle in the evening or night. Showers or thundershowers will occur at a few places in the other sea areas around the island.

Wind speed will be 25-35 kmph in the sea areas around the island. Wind speed can be increased up to 45 kmph at times and sea condition will be fairly rough at times.

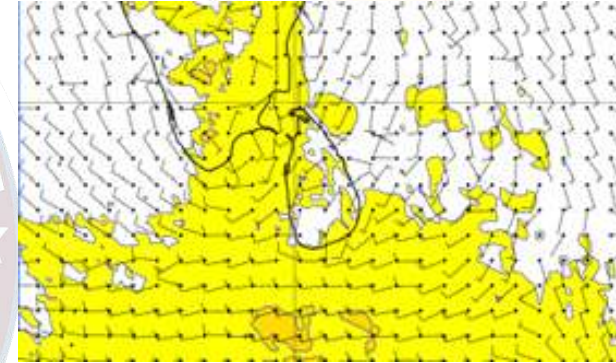
Wind and Rainfall Forecast (Total precipitation for 24 hrs)



Significant wave height (in meters)



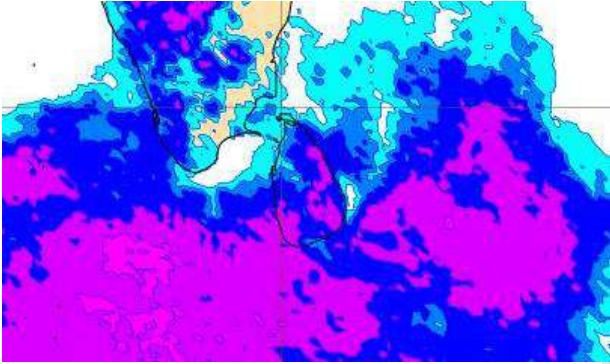
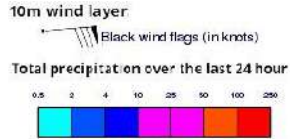
Wind Gust (m/s)



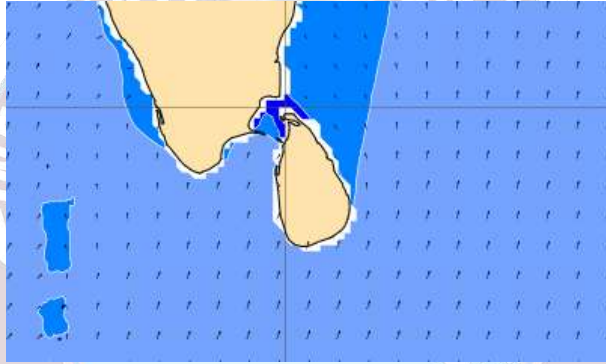
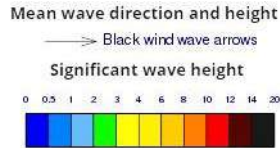
Showers or thundershowers will occur at several places in the sea areas off the coast extending from Puttalam to Hambantota via Colombo and Galle in the evening or night. Showers or thundershowers will occur at a few places in the other sea areas around the island.

Wind speed will be 25-35 kmph in the sea areas around the island. Wind speed can be increased up to 45 kmph at times and sea condition will be fairly rough at times.

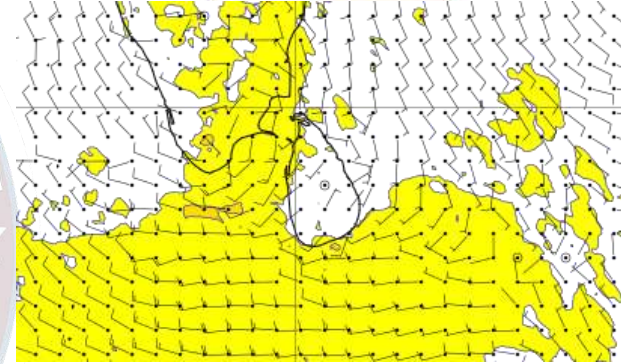
Wind and Rainfall Forecast (Total precipitation for 24 hrs)



Significant wave height (in meters)



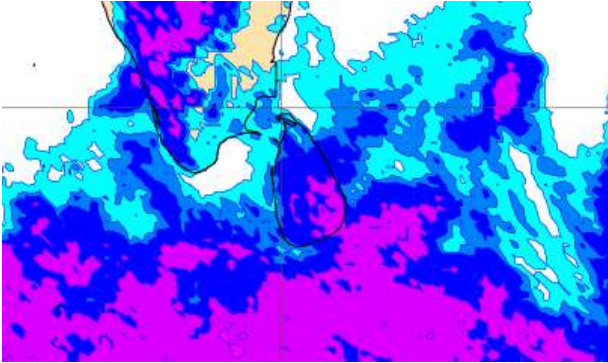
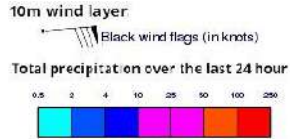
Wind Gust (m/s)



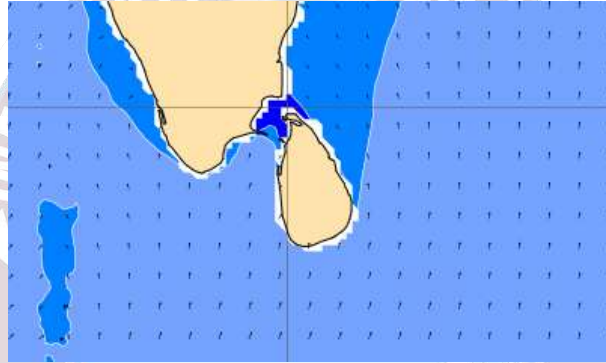
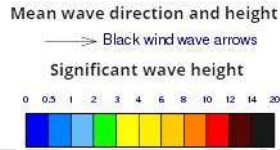
Showers or thundershowers will occur at several places in the sea areas off the coast extending from Puttalam to Hambantota via Colombo and Galle in the evening or night. Showers or thundershowers will occur at a few places in the other sea areas around the island.

Wind speed will be 25-35 kmph in the sea areas around the island. Wind speed can be increased up to 45-50 kmph at times and sea condition will be rough at times in the sea areas extending from Kankasanturai to Hambantota via Galle.

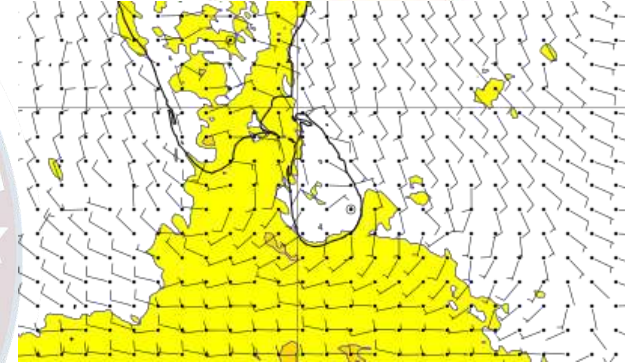
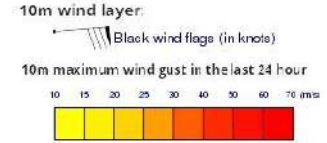
Wind and Rainfall Forecast (Total precipitation for 24 hrs)



Significant wave height (in meters)



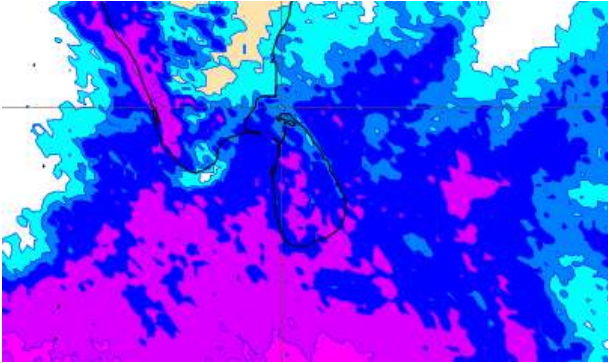
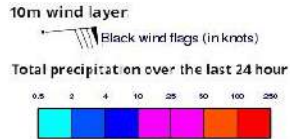
Wind Gust (m/s)



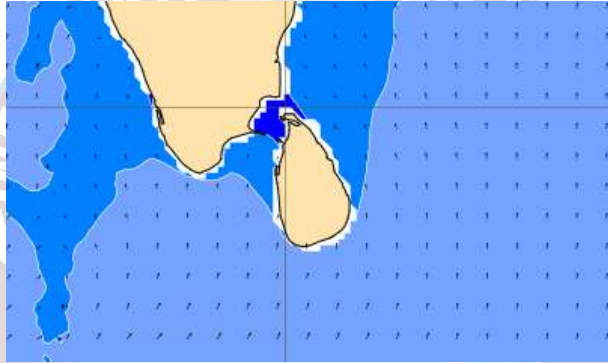
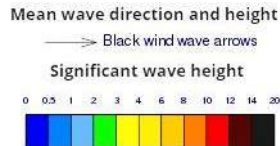
Showers or thundershowers will occur at several places in the sea areas off the coast extending from Puttalam to Hambantota via Colombo and Galle in the evening or night. Showers or thundershowers will occur at a few places in the other sea areas around the island.

Wind speed will be 25-35 kmph in the sea areas around the island. Wind speed can be increased up to 45-50 kmph at times and sea condition will be rough at times in the sea areas extending from Kankasanturai to Hambantota via Galle.

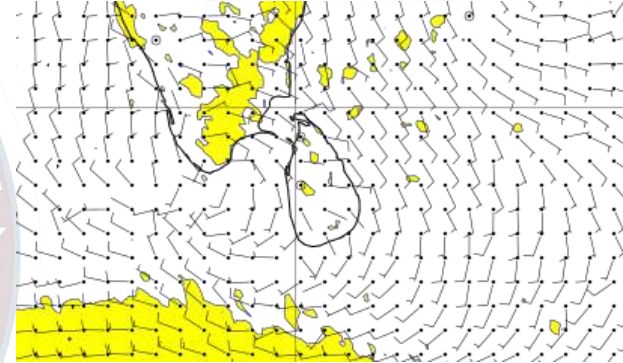
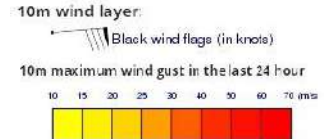
Wind and Rainfall Forecast (Total precipitation for 24 hrs)



Significant wave height (in meters)



Wind Gust (m/s)



Showers or thundershowers will occur at several places in the other sea areas around the island.

Wind speed will be 20-30 kmph in the sea areas around the island.



Thank you!