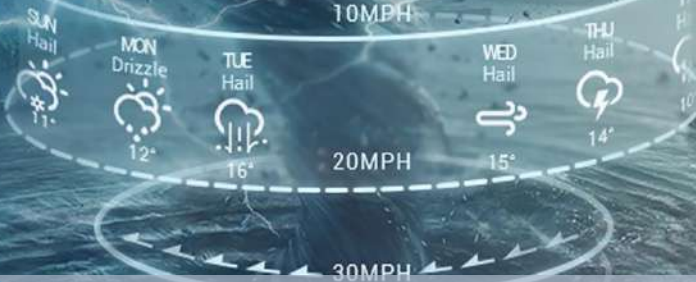


# 08 DAYS WEATHER FORECAST FOR COASTAL AREAS AROUND SRI LANKA

Storm Direction

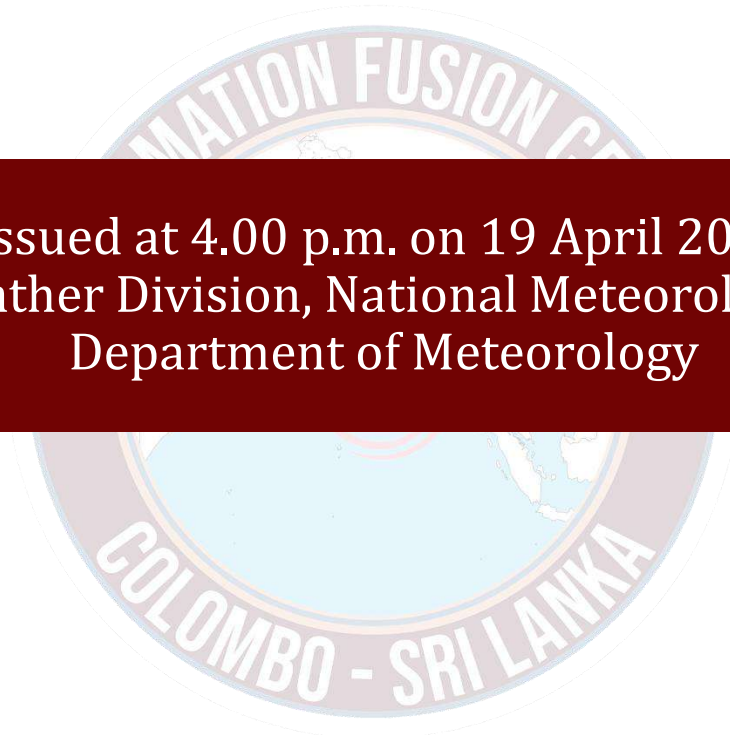


WARNING



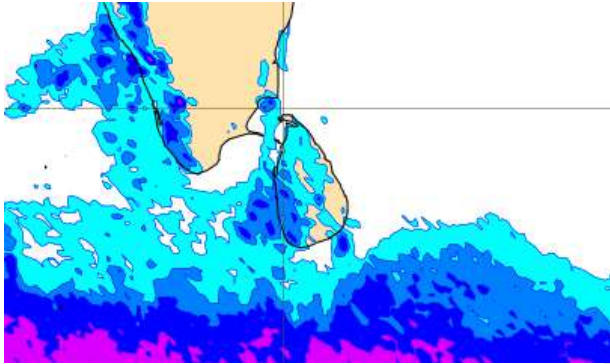
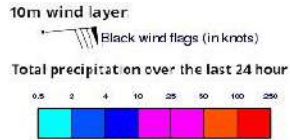
**INFORMATION FUSION CENTRE  
COLOMBO**

Know weather before it can

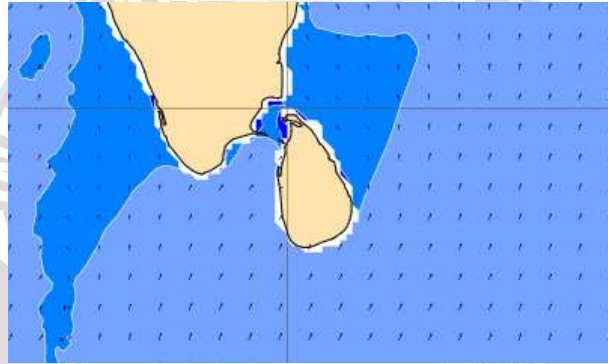
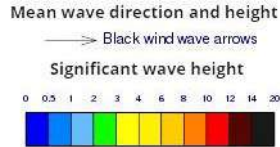


Issued at 4.00 p.m. on 19 April 2024  
Marine Weather Division, National Meteorological Centre  
Department of Meteorology

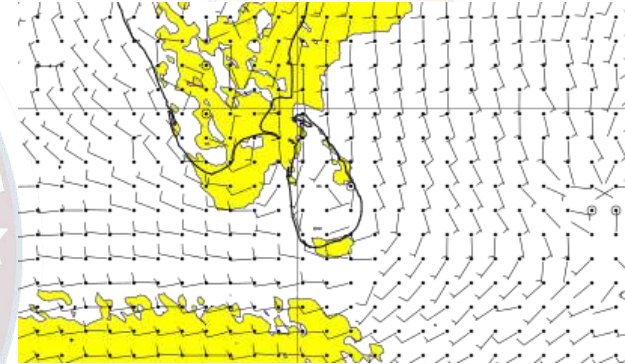
## Wind and Rainfall Forecast (Total precipitation for 24 hrs)



## Significant wave height (in meters)



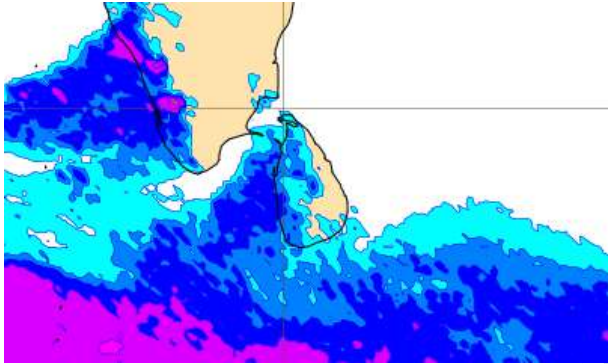
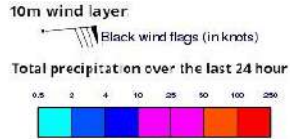
## Wind Gust (m/s)



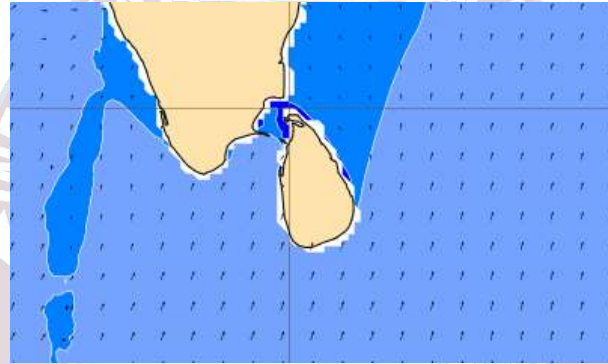
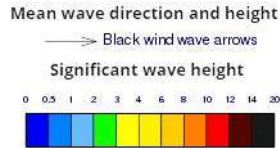
Showers or thundershowers will occur at a few places in the sea areas off the coast extending from Puttalam to Hambantota via Colombo and Galle. Mainly fair weather will prevail in the other sea areas around the island.

Wind speed will be 15-30 kmph in the sea areas around the island. Wind speed can increase up to 45 kmph at times and the sea condition will be fairly rough at times in the sea areas off the coast extending from Puttalam to Kankasanturai via Mannar and from Galle to Matara.

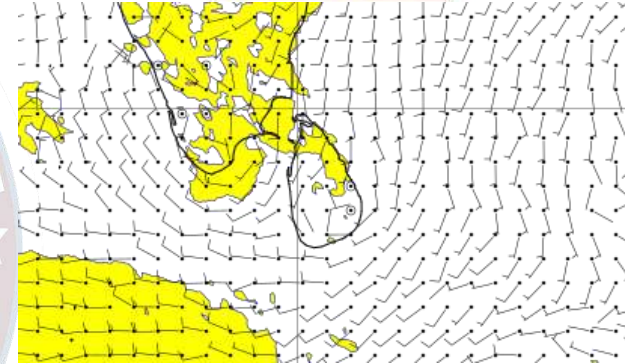
## Wind and Rainfall Forecast (Total precipitation for 24 hrs)



## Significant wave height (in meters)



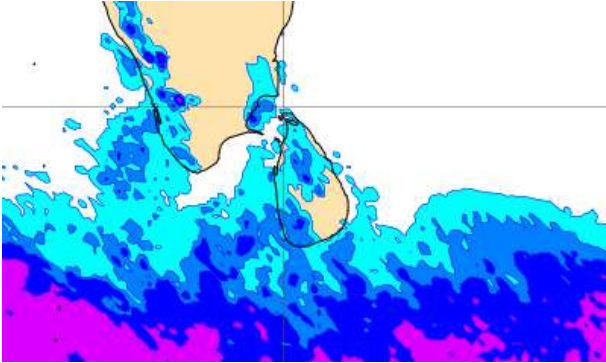
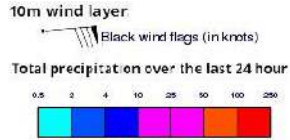
## Wind Gust (m/s)



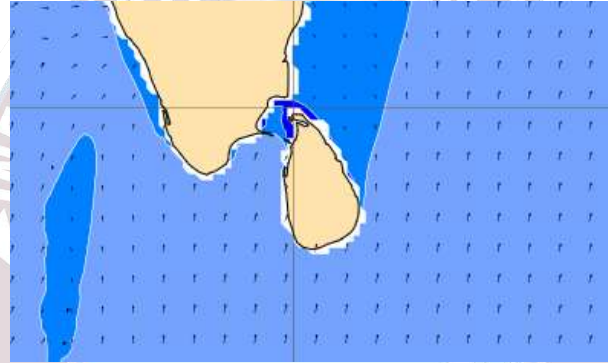
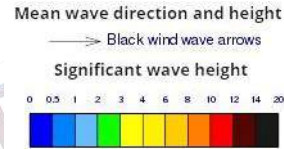
Showers or thundershowers will occur at a few places in the sea areas off the coast extending from Mannar to Hambantota via Colombo and Galle. Mainly fair weather will prevail in the other sea areas around the island.

Wind speed will be 15-30 kmph in the sea areas around the island. Wind speed can increase up to 45 kmph at times and the sea condition will be fairly rough at times in the sea areas off the coast extending from Kankasanturai to Mannar.

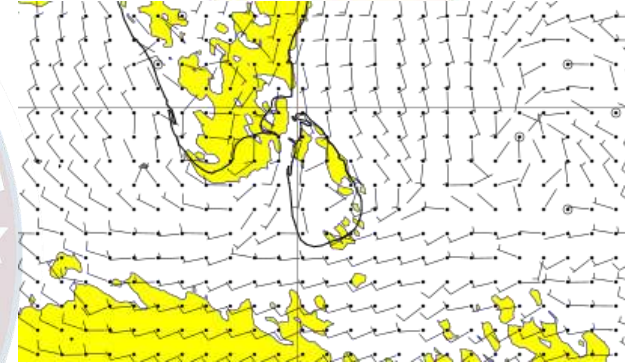
## Wind and Rainfall Forecast (Total precipitation for 24 hrs)



## Significant wave height (in meters)



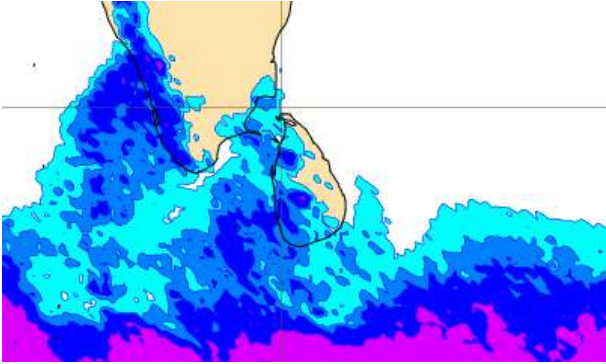
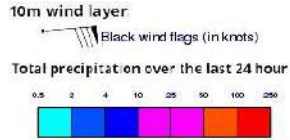
## Wind Gust (m/s)



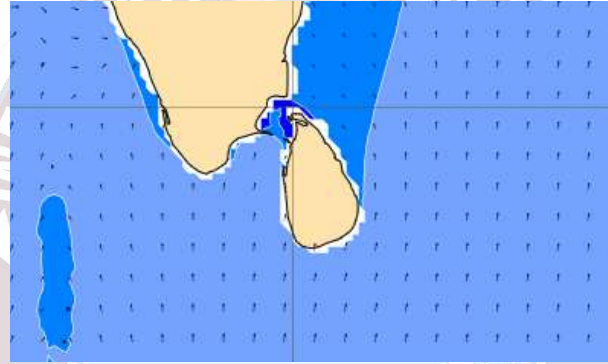
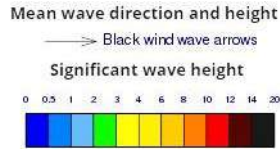
Showers or thundershowers will occur at a few places in the sea areas off the coast extending from Puttalam to Hambantota via Colombo and Galle. Mainly fair weather will prevail in the other sea areas around the island.

Wind speed will be 15-30 kmph in the sea areas around the island.

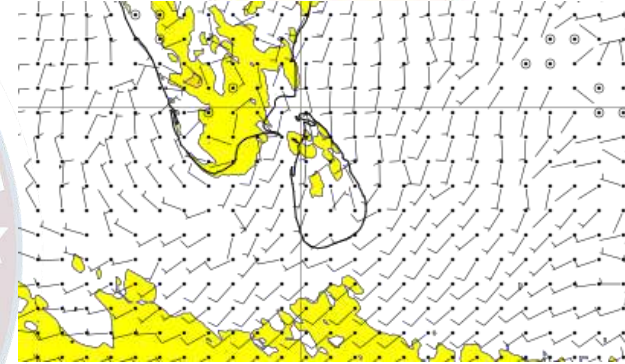
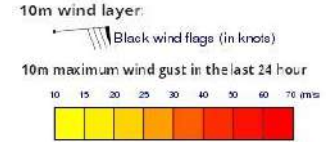
## Wind and Rainfall Forecast (Total precipitation for 24 hrs)



## Significant wave height (in meters)



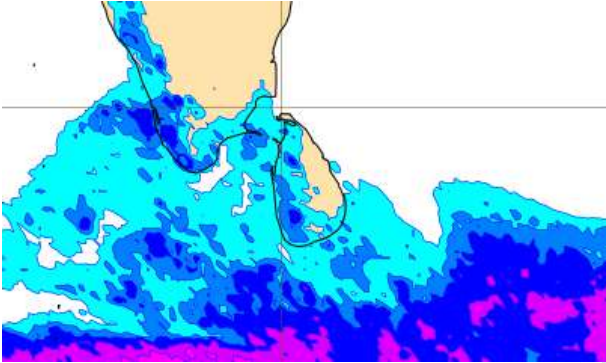
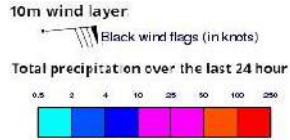
## Wind Gust (m/s)



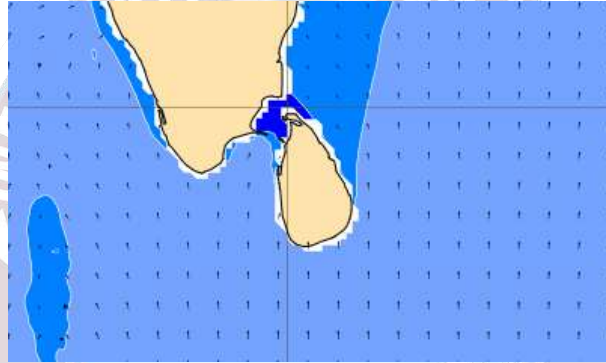
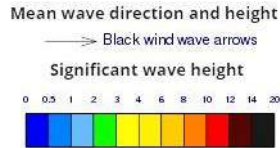
Showers or thundershowers will occur at a few places in the sea areas off the coast extending from Mannar to Hambantota via Colombo and Galle. Mainly fair weather will prevail in the other sea areas around the island.

Wind speed will be 20-35 kmph in the sea areas around the island.

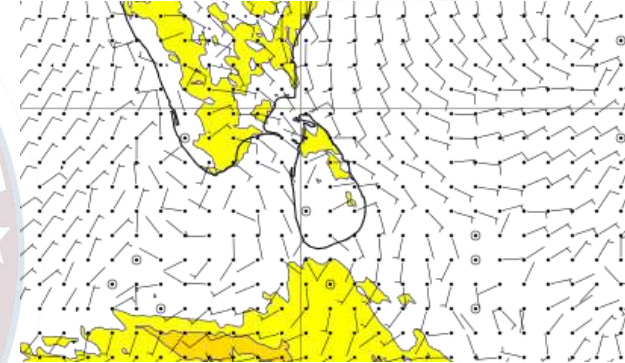
## Wind and Rainfall Forecast (Total precipitation for 24 hrs)



## Significant wave height (in meters)



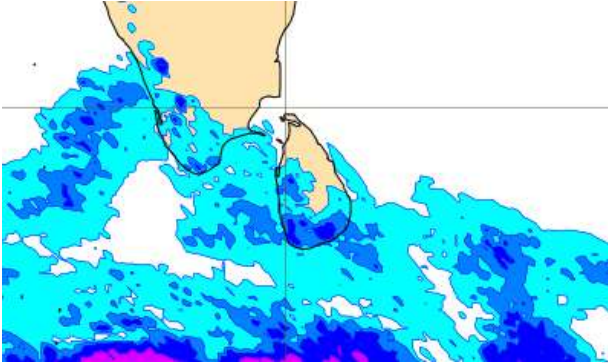
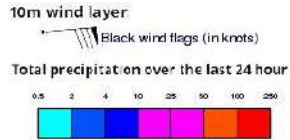
## Wind Gust (m/s)



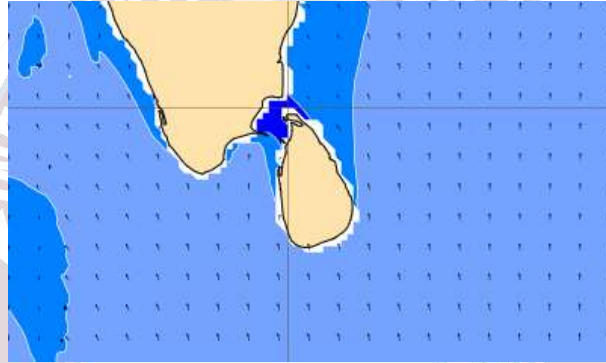
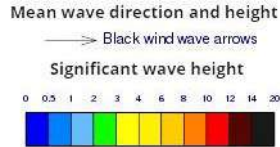
Showers or thundershowers will occur at a few places in the sea areas off the coast extending from Mannar to Hambantota via Colombo and Galle. Mainly fair weather will prevail in the other sea areas around the island.

Wind speed will be 20-30 kmph in the sea areas around the island.

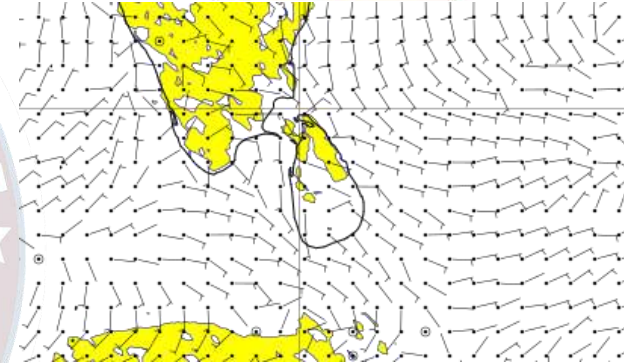
## Wind and Rainfall Forecast (Total precipitation for 24 hrs)



## Significant wave height (in meters)



## Wind Gust (m/s)

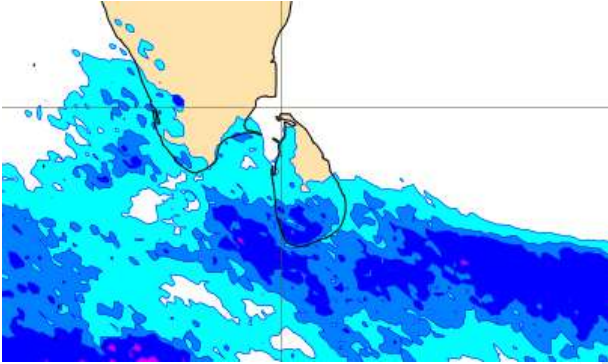
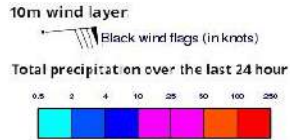


Showers or thundershowers will occur at a few places in the sea areas off the coast extending from Puttalam to Hambantota via Colombo and Galle. Mainly fair weather will prevail in the other sea areas around the island.

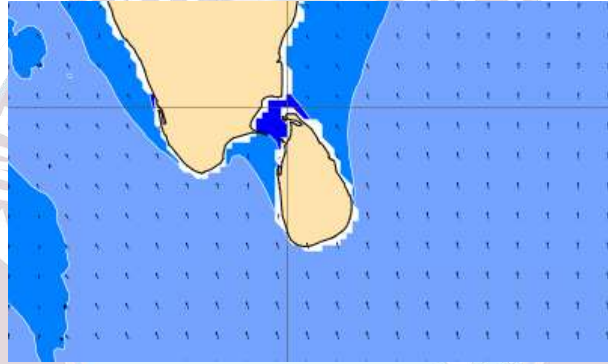
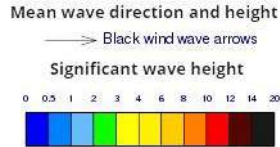
Wind speed will be 20-30 kmph in the sea areas around the island.



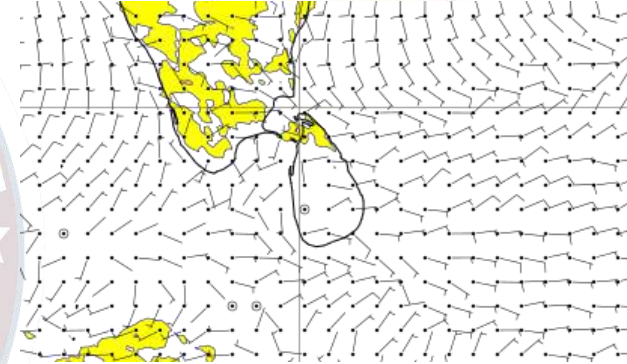
## Wind and Rainfall Forecast (Total precipitation for 24 hrs)



## Significant wave height (in meters)



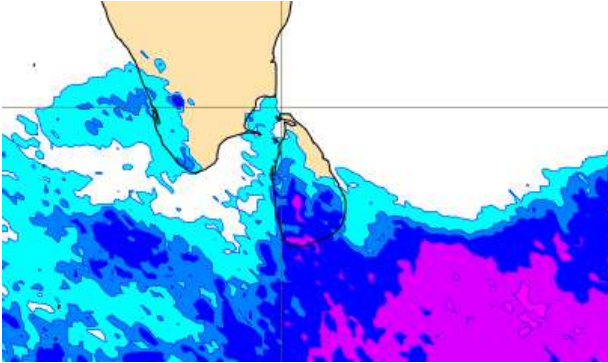
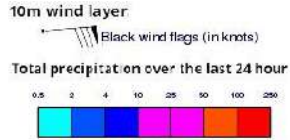
## Wind Gust (m/s)



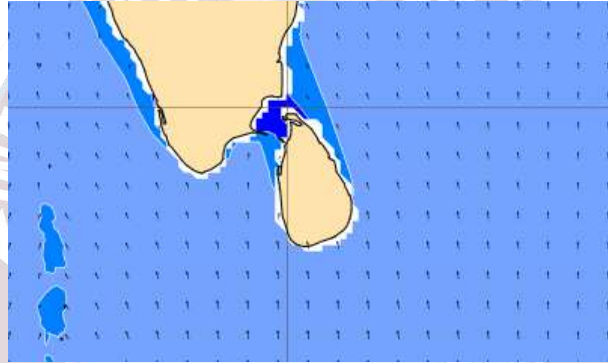
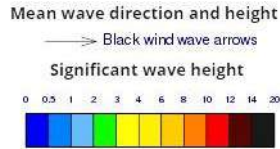
Showers or thundershowers will occur at a few places in the sea areas off the coast extending from Puttalam to Batticaloa via Colombo, Galle and Hambantota. Mainly fair weather will prevail in the other sea areas around the island.

Wind speed will be 20-30 kmph in the sea areas around the island.

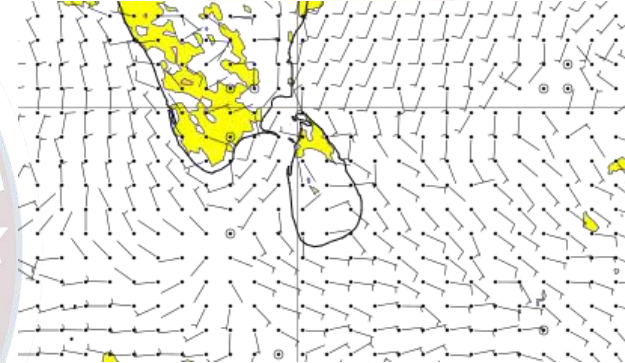
## Wind and Rainfall Forecast (Total precipitation for 24 hrs)



## Significant wave height (in meters)



## Wind Gust (m/s)



Showers or thundershowers will occur at a few places in the sea areas off the coast extending from Colombo to Hambantota via Galle. Mainly fair weather will prevail in the other sea areas around the island.

Wind speed will be 20-30 kmph in the sea areas around the island.



Thank you!