

# 08 DAYS WEATHER FORECAST FOR COASTAL AREAS AROUND SRI LANKA

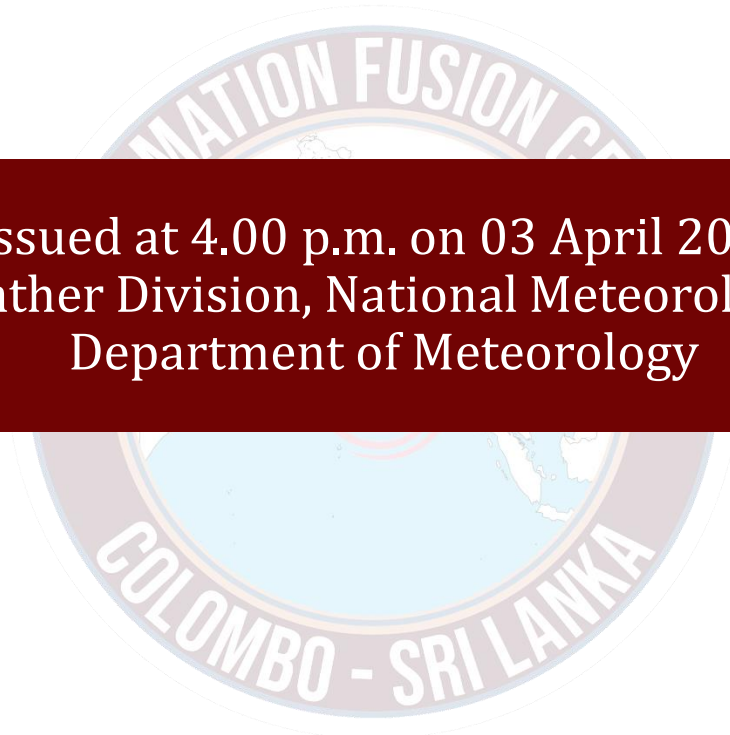
Storm Direction



WARNING




**INFORMATION FUSION CENTRE  
COLOMBO**



Issued at 4.00 p.m. on 03 April 2024  
Marine Weather Division, National Meteorological Centre  
Department of Meteorology

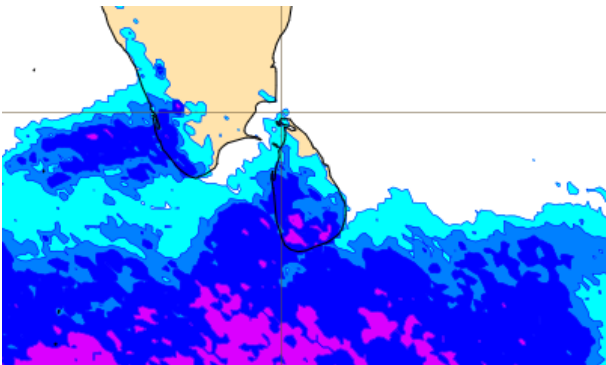
## Wind and Rainfall Forecast (Total precipitation for 24 hrs)

10m wind layer:

 Black wind flags (in knots)

Total precipitation over the last 24 hour

0.5 2 4 10 25 50 100 200



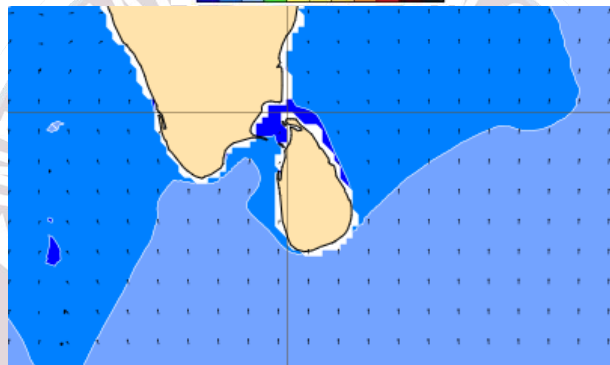
## Significant wave height (in meters)

Mean wave direction and height

 Black wind wave arrows

Significant wave height

0 0.5 1 2 3 4 6 8 10 12 14 20



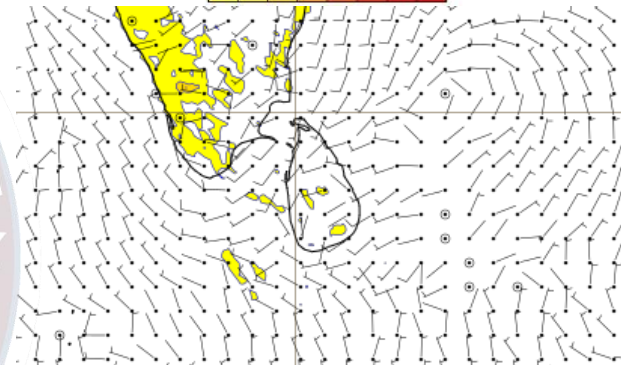
## Wind Gust (m/s)

10m wind layer:

 Black wind flags (in knots)

10m maximum wind gust in the last 24 hour

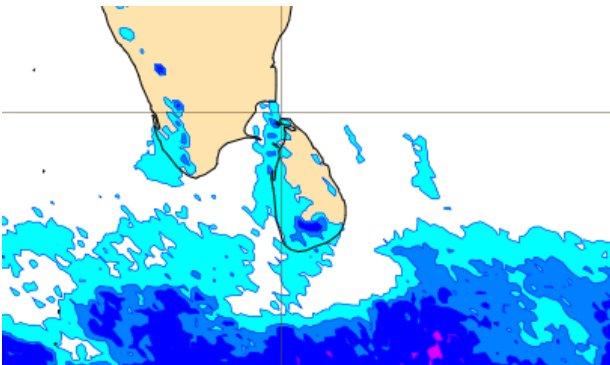
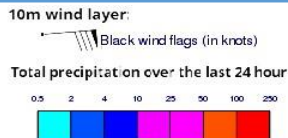
10 15 20 25 30 40 50 60 70 (km/h)



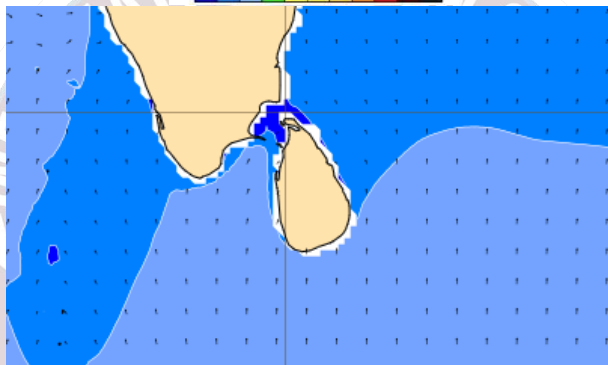
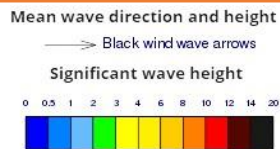
Showers or thundershowers will occur at a several places in the sea areas off the coast extending from Kankasanturai to Hambantota via Colombo and Galle. Mainly fair weather will prevail in the other sea areas around the island.

Wind speed will be 20-30 kmph in the sea areas around the island.

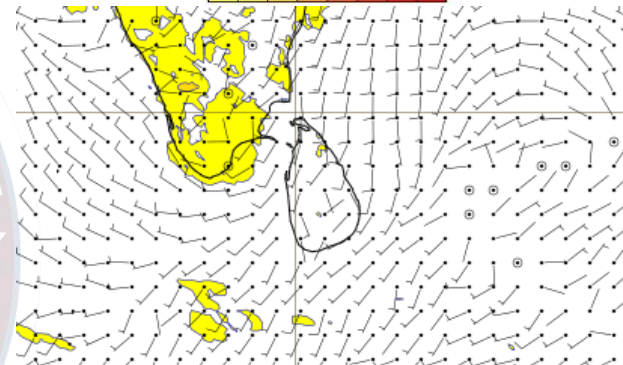
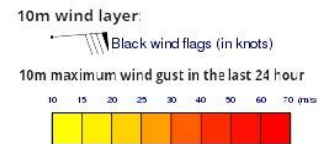
## Wind and Rainfall Forecast (Total precipitation for 24 hrs)



## Significant wave height (in meters)



## Wind Gust (m/s)

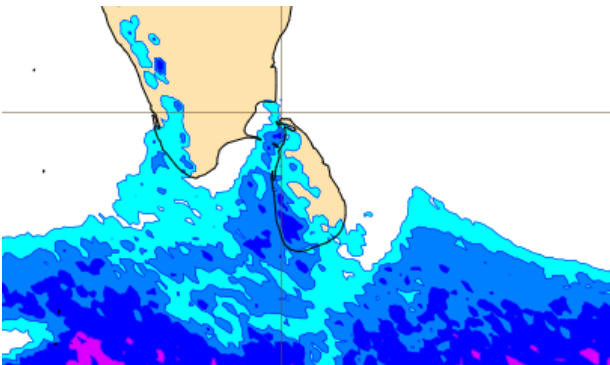
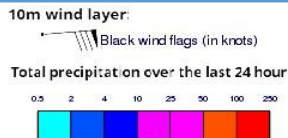


Showers or thundershowers will occur at a few places in the sea areas off the coast extending from Kankasanturai to Matara via Colombo and Galle. Mainly fair weather will prevail in the other sea areas around the island. Wind speed

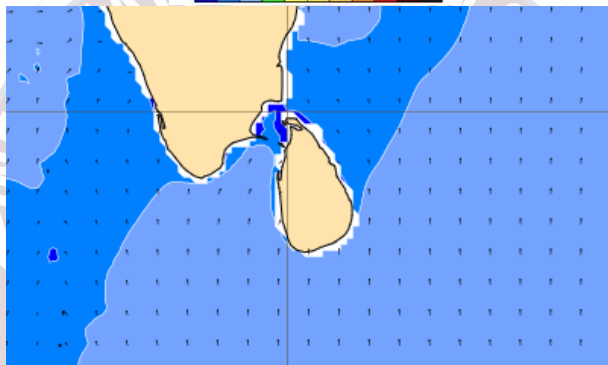
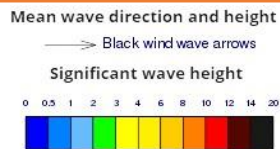
Wind speed will be 20-30 kmph in the sea areas around the island.



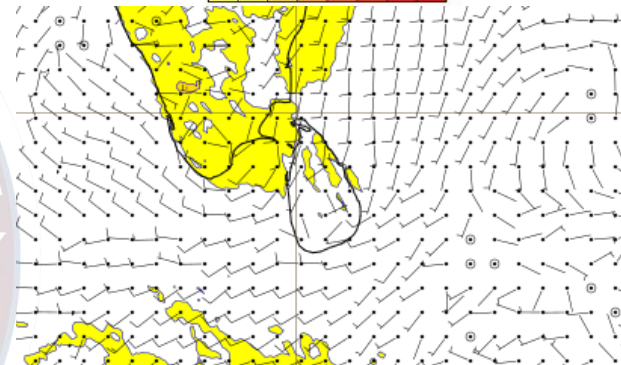
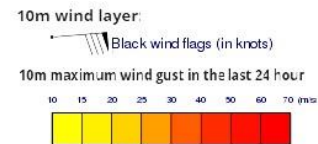
## Wind and Rainfall Forecast (Total precipitation for 24 hrs)



## Significant wave height (in meters)



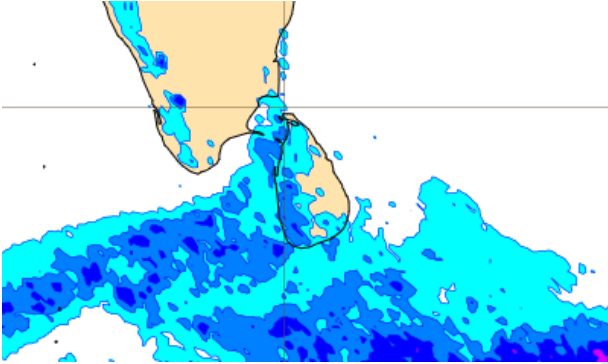
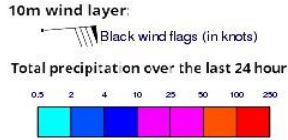
## Wind Gust (m/s)



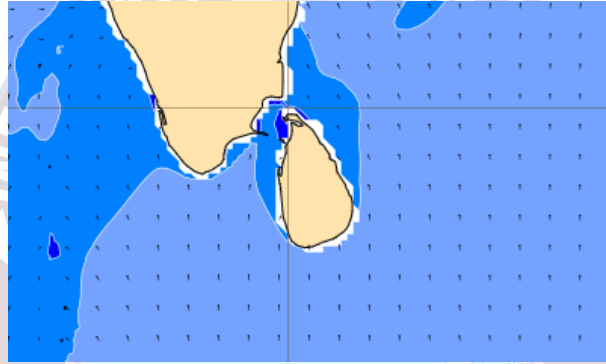
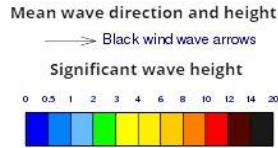
Showers or thundershowers will occur at a several places in the sea areas off the coast extending from Kankasanturai to Hambantota via Colombo and Galle. Mainly fair weather will prevail in the other sea areas around the island. Wind speed will be 20-30 kmph in the sea areas around the island.

Wind speed will be 15-30 kmph in the sea areas around the island. Wind speed can increase up to 45 kmph at times and the sea condition will be fairly rough at times in the sea areas off the coast extending from Puttalam to Kankasanturai via Mannar.

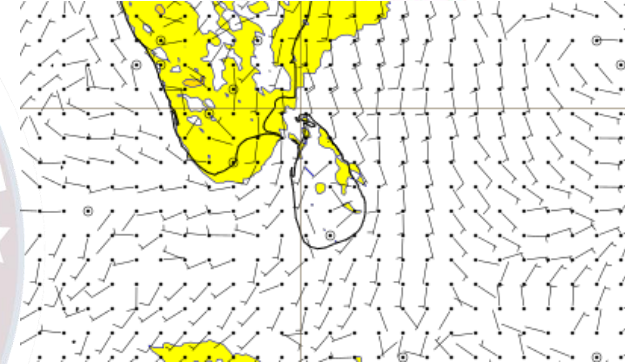
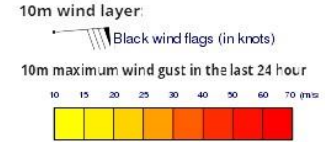
## Wind and Rainfall Forecast (Total precipitation for 24 hrs)



## Significant wave height (in meters)



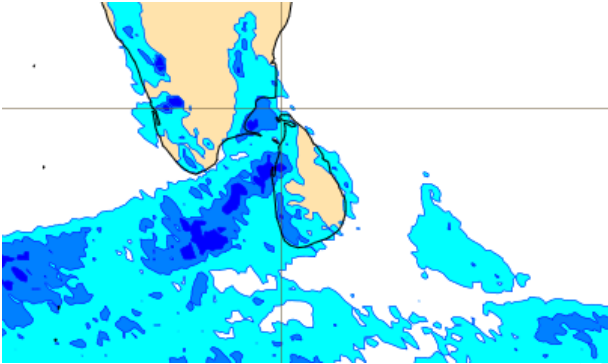
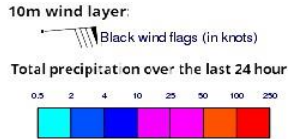
## Wind Gust (m/s)



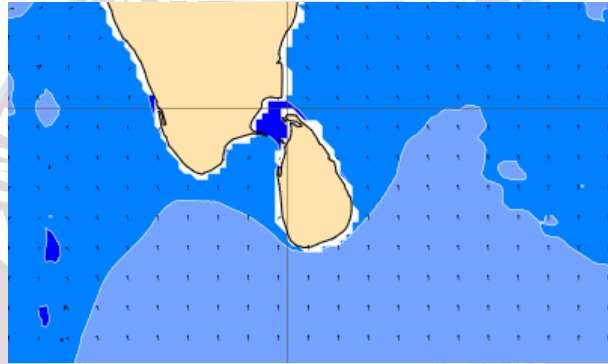
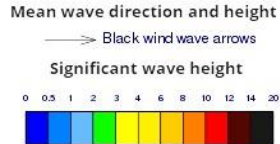
Showers or thundershowers will occur at a several places in the sea areas off the coast extending from Kankasanturai to Hambantota via Colombo and Galle. Mainly fair weather will prevail in the other sea areas around the island.

Wind speed will be 15-30 kmph in the sea areas around the island.

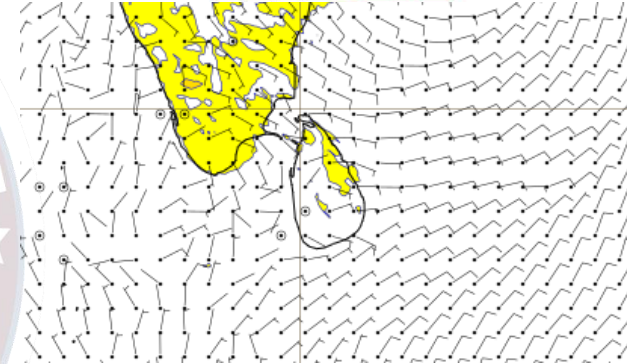
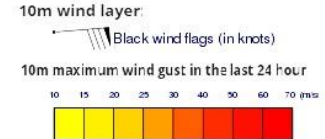
## Wind and Rainfall Forecast (Total precipitation for 24 hrs)



## Significant wave height (in meters)



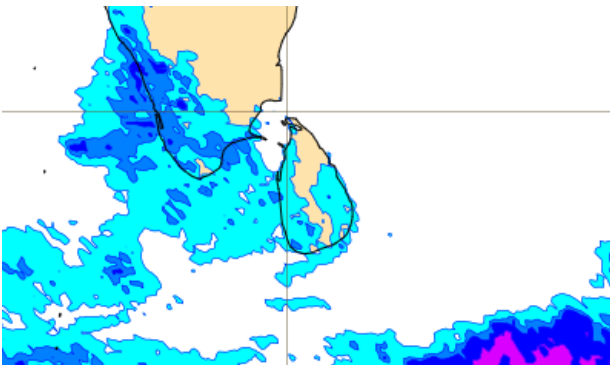
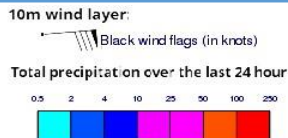
## Wind Gust (m/s)



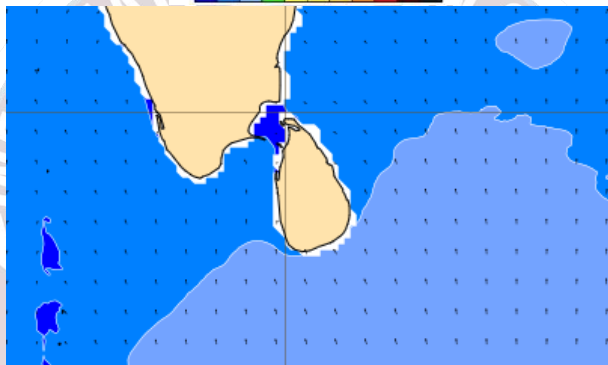
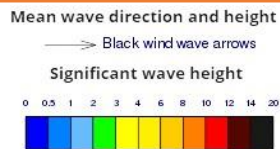
Showers or thundershowers will occur at a few places in the sea areas off the coast extending from Kankasanturai to Galle via Colombo. Mainly fair weather will prevail in the other sea areas around the island.

Wind speed will be 20-30 kmph in the sea areas around the island.

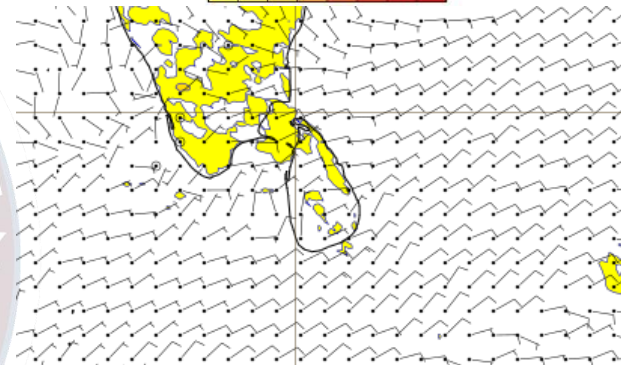
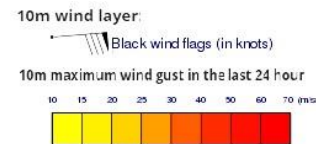
## Wind and Rainfall Forecast (Total precipitation for 24 hrs)



## Significant wave height (in meters)



## Wind Gust (m/s)

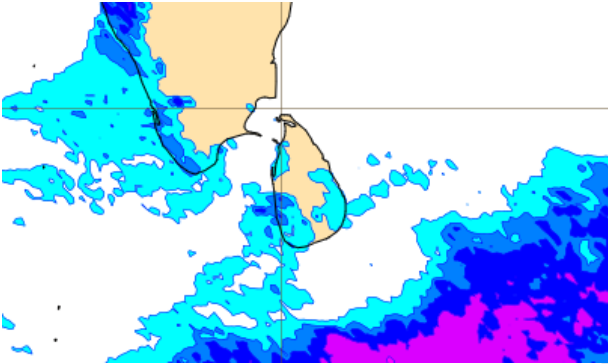
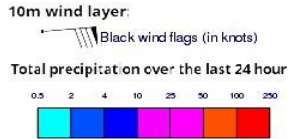


Showers or thundershowers will occur at a few places in the sea areas off the coast extending from Puttalam to Galle via Colombo. Mainly fair weather will prevail in the other sea areas around the island.

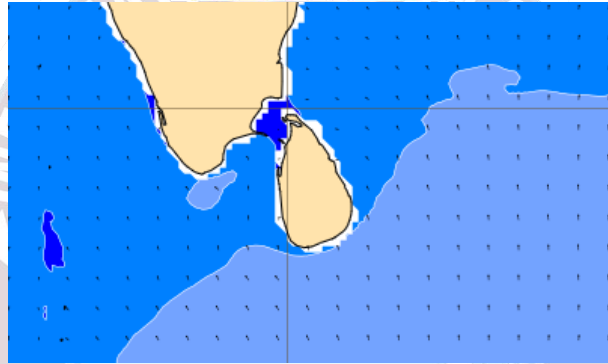
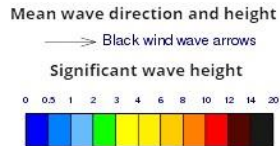
Wind speed will be 15-30 kmph in the sea areas around the island. Wind speed can increase up to 45 kmph at times and the sea condition will be fairly rough at times in the sea areas off the coast extending from Puttalam to Kankasanturai via Mannar.



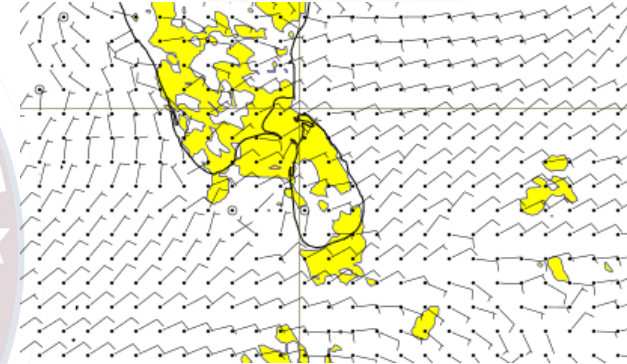
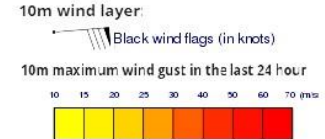
## Wind and Rainfall Forecast (Total precipitation for 24 hrs)



## Significant wave height (in meters)



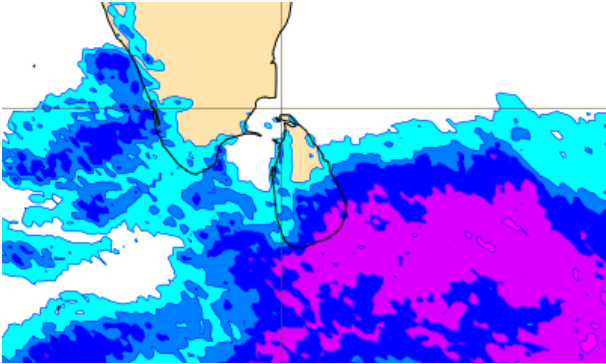
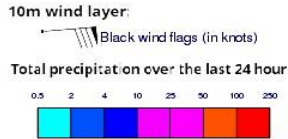
## Wind Gust (m/s)



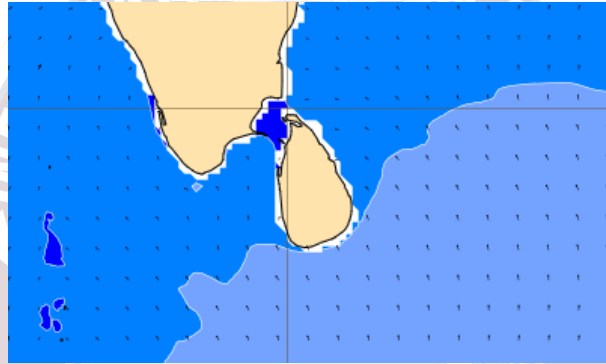
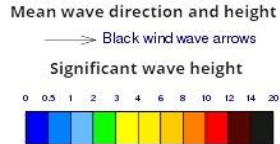
Showers or thundershowers will occur at a few places in the sea areas off the coast extending from Colombo to Galle. Mainly fair weather will prevail in the other sea areas around the island.

Wind speed will be 15-30 kmph in the sea areas around the island. Wind speed can increase up to 45 kmph at times and the sea condition will be fairly rough at times in the sea areas off the coast extending from Puttalam to Kankasanturai via Mannar and from Galle to Hambantota via Matara.

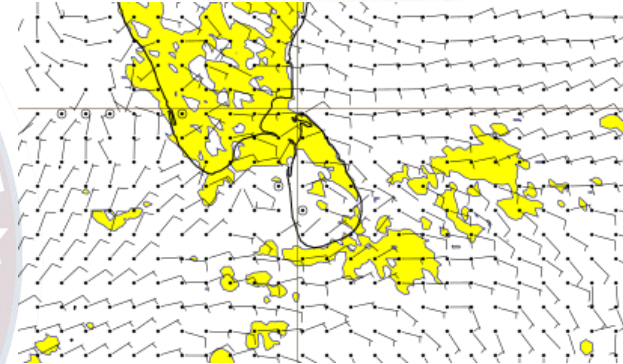
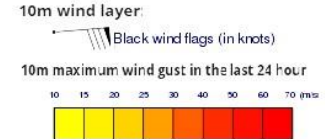
## Wind and Rainfall Forecast (Total precipitation for 24 hrs)



## Significant wave height (in meters)



## Wind Gust (m/s)



Showers or thundershowers will occur at a several places in the sea areas off the coast extending from Colombo to Batticaloa via Hambantota and Galle. Mainly fair weather will prevail in the other sea areas around the island.

Wind speed will be 15-30 kmph in the sea areas around the island. Wind speed can increase up to 45 kmph at times and the sea condition will be fairly rough at times in the sea areas off the coast extending from Puttalam to Kankasanturai via Mannar and from Galle to Hambantota via Matara.



Thank you!