

08 DAYS WEATHER FORECAST FOR COASTAL AREAS AROUND SRI LANKA

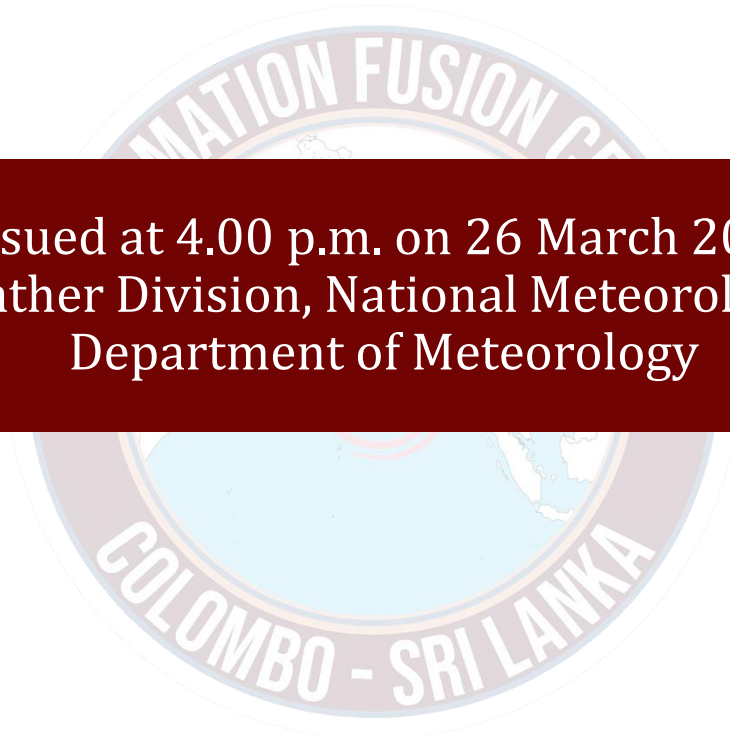
Storm Direction



WARNING

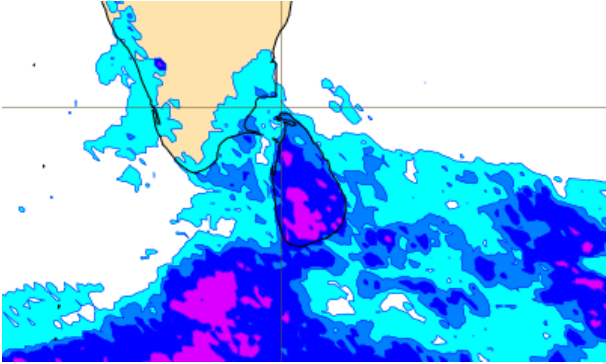
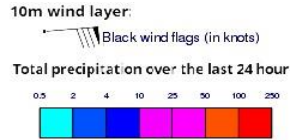


**INFORMATION FUSION CENTRE
COLOMBO**

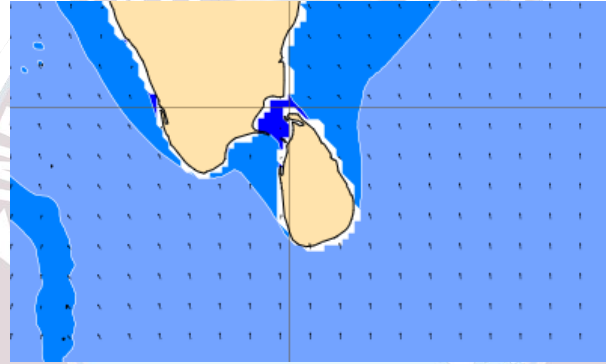
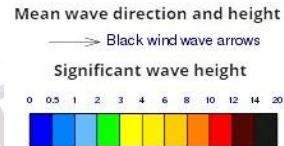


Issued at 4.00 p.m. on 26 March 2024
Marine Weather Division, National Meteorological Centre
Department of Meteorology

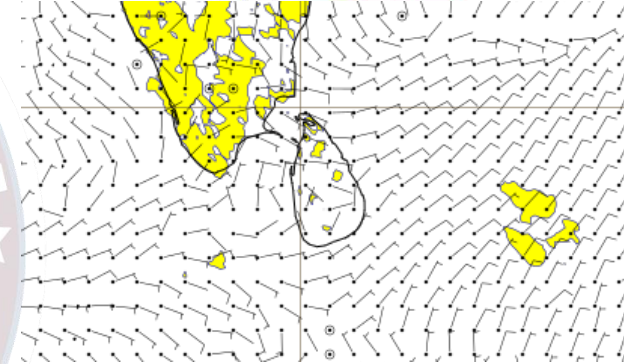
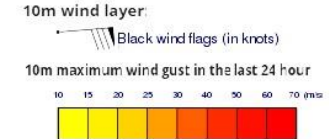
Wind and Rainfall Forecast (Total precipitation for 24 hrs)



Significant wave height (in meters)



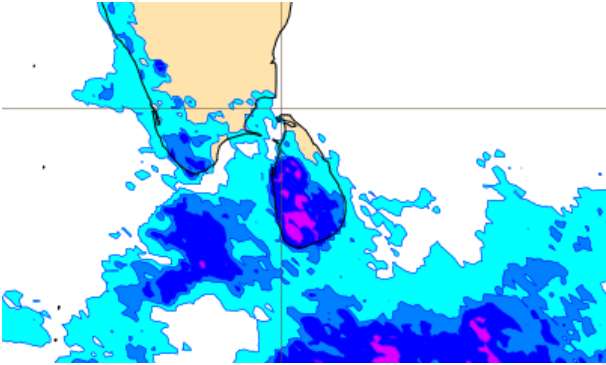
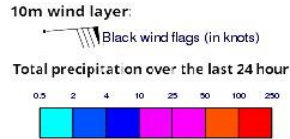
Wind Gust (m/s)



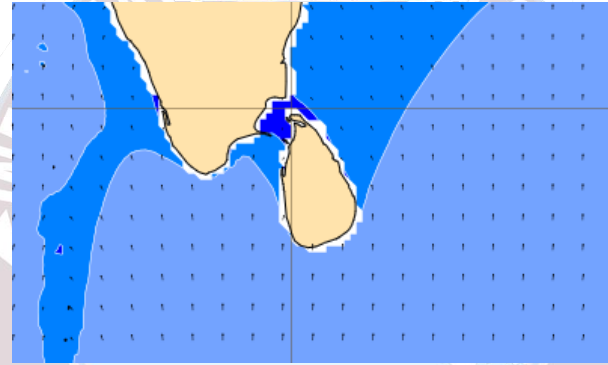
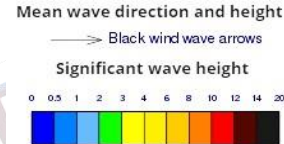
Showers or thundershowers will occur at several places in the sea areas off the coast extending from Galle to Batticaloa via Hambantota. Showers or thundershowers may occur at a few places in the other sea areas around the island.

Wind speed will be 20-30 kmph in the sea areas around the island.

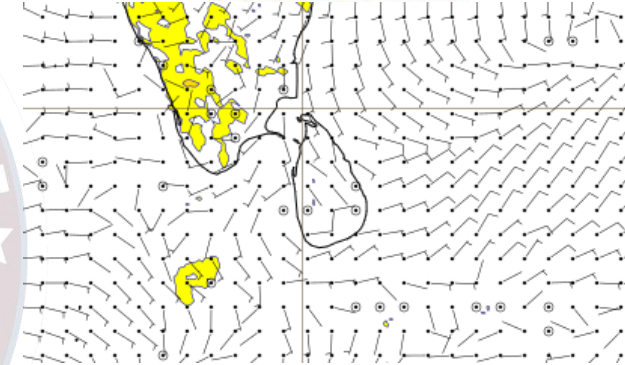
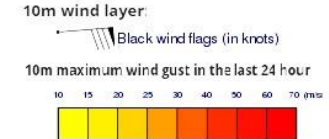
Wind and Rainfall Forecast (Total precipitation for 24 hrs)



Significant wave height (in meters)



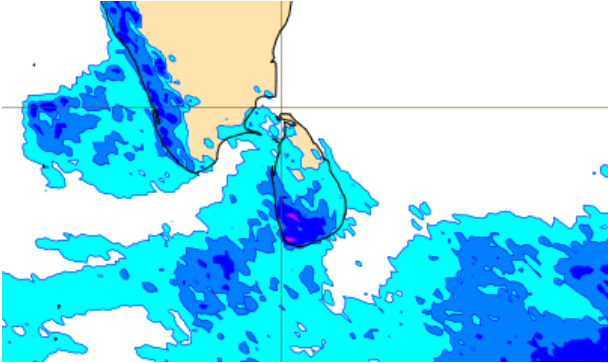
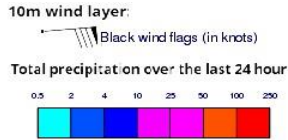
Wind Gust (m/s)



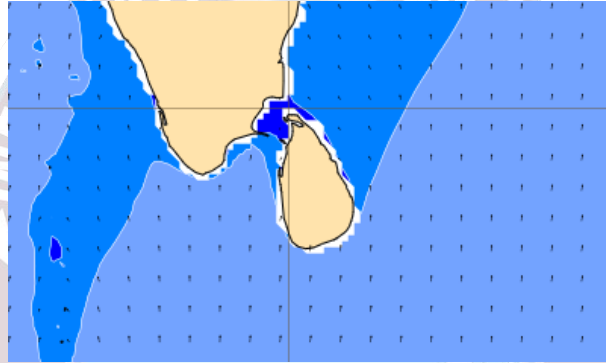
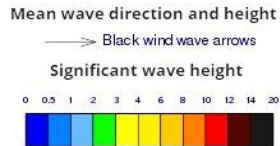
Showers or thundershowers will occur at several places in the sea areas off the coast extending from Galle to Matara. Showers will occur at a few places in the sea areas off the coast extending from Puttalam to Galle via Colombo and from Matara to Hambantota. Mainly fair weather will prevail in the other sea areas around the island.

Wind speed will be 20-30 kmph in the sea areas around the island.

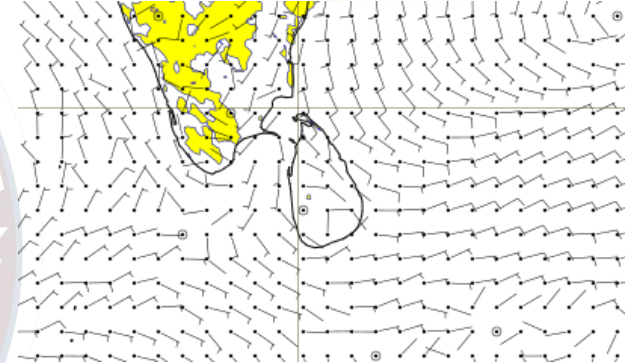
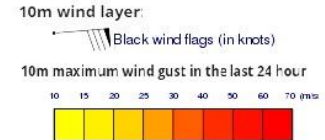
Wind and Rainfall Forecast (Total precipitation for 24 hrs)



Significant wave height (in meters)



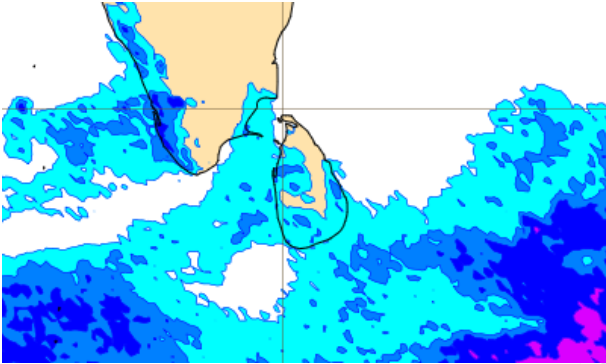
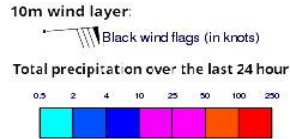
Wind Gust (m/s)



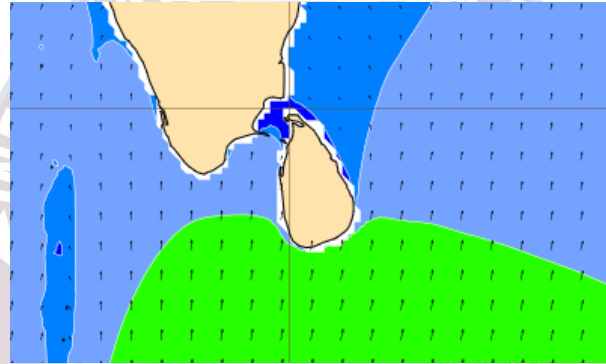
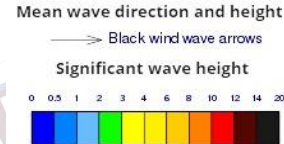
Showers or thundershowers will occur at several places in the sea areas off the coast extending from Puttalam to Galle. Showers will occur at a few places in the sea areas off the coast extending from Mannar to Puttalam to from Galle to Trincomalee via Hambantota. Mainly fair weather will prevail in the other sea areas around the island.

Wind speed will be 20-30 kmph in the sea areas around the island.

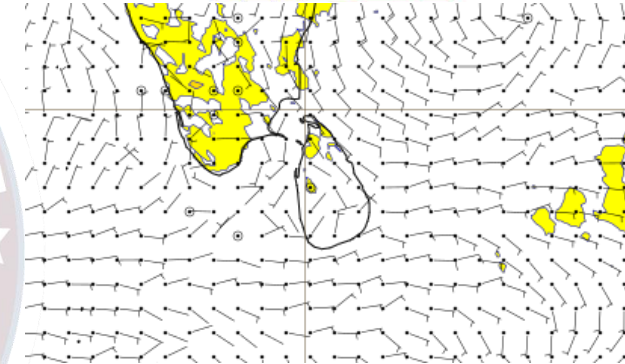
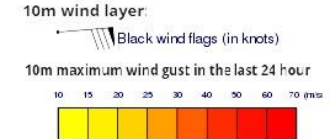
Wind and Rainfall Forecast (Total precipitation for 24 hrs)



Significant wave height (in meters)



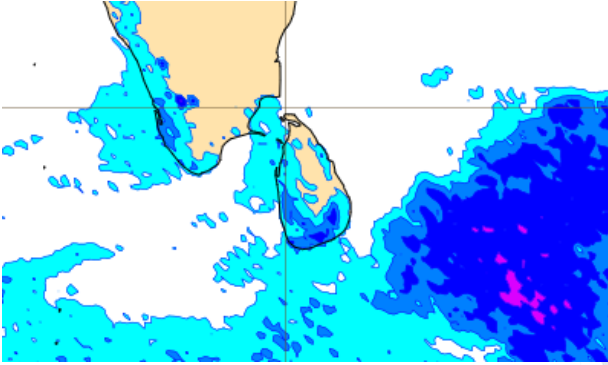
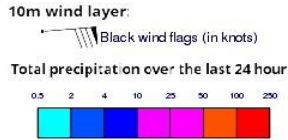
Wind Gust (m/s)



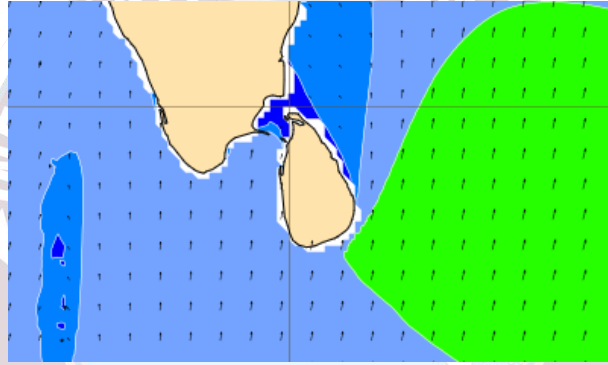
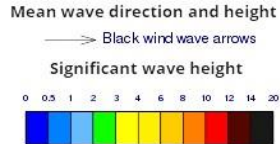
Showers will occur at a few places in the sea areas off the coast extending from Mannar to Batticaloa via Colombo and Galle. Mainly fair weather will prevail in the other sea areas around the island.

Wind speed will be 20-30 kmph in the sea areas around the island.

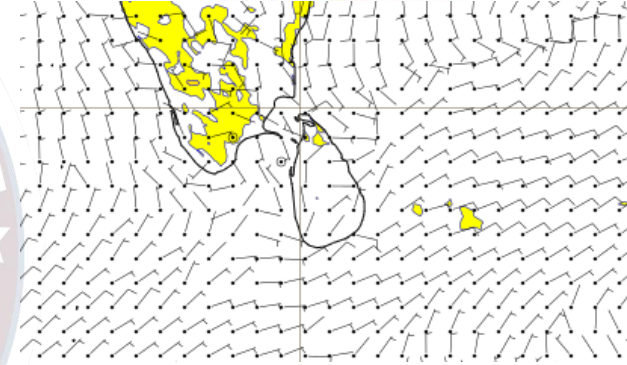
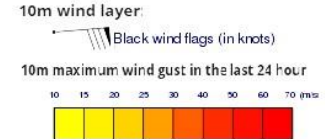
Wind and Rainfall Forecast (Total precipitation for 24 hrs)



Significant wave height (in meters)



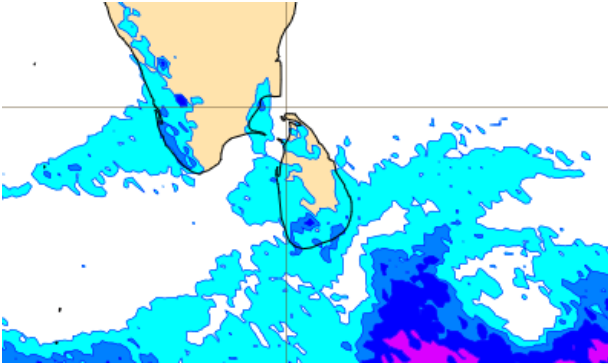
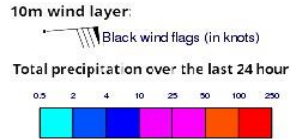
Wind Gust (m/s)



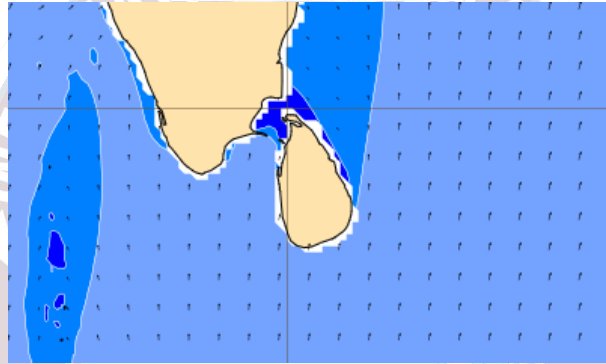
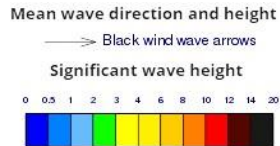
Showers will occur at few places in the sea areas off the coast extending from Mannar to Hambantota via Colombo and Galle. Mainly fair weather will prevail in the other sea areas around the island.

Wind speed will be 20-30 kmph in the sea areas around the island.

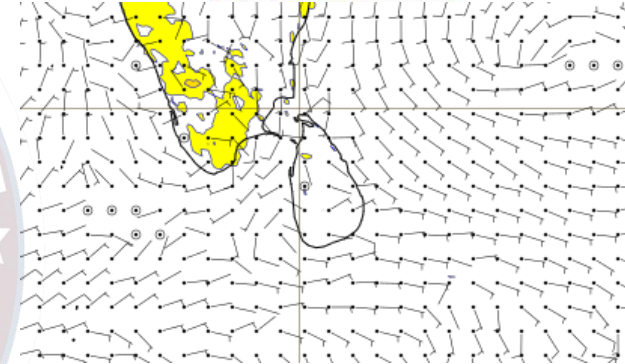
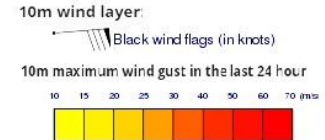
Wind and Rainfall Forecast (Total precipitation for 24 hrs)



Significant wave height (in meters)



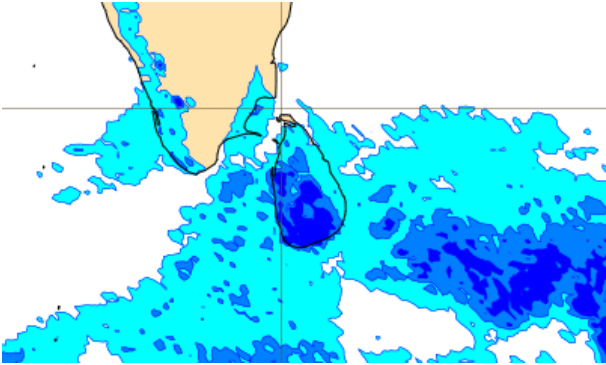
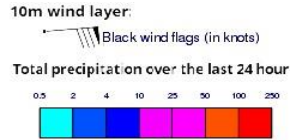
Wind Gust (m/s)



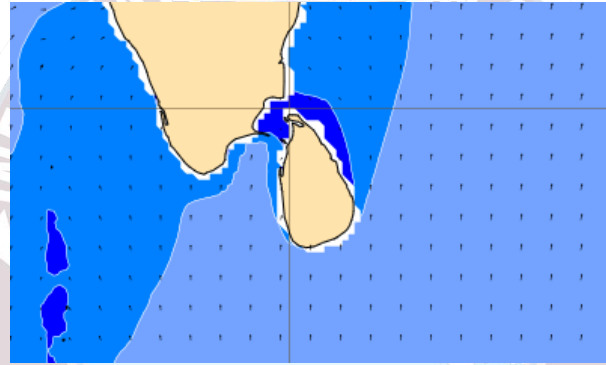
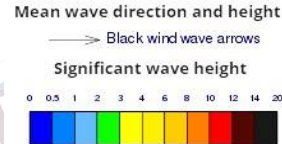
Showers will occur at few places in the sea areas off the coast extending from Puttalam to Batticaloa via Colombo, Galle and Hambantota. Mainly fair weather will prevail in the other sea areas around the island.

Wind speed will be 20-30 kmph in the sea areas around the island.

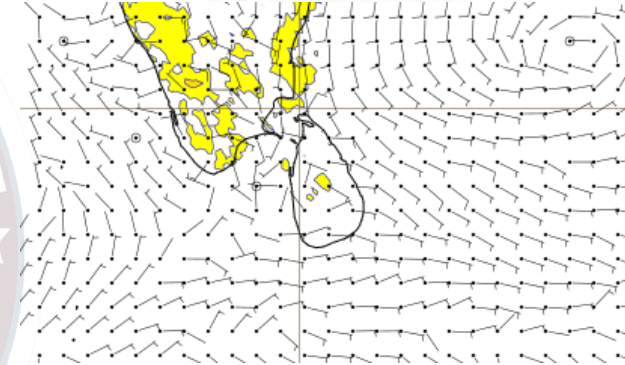
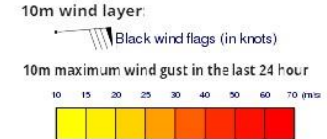
Wind and Rainfall Forecast (Total precipitation for 24 hrs)



Significant wave height (in meters)



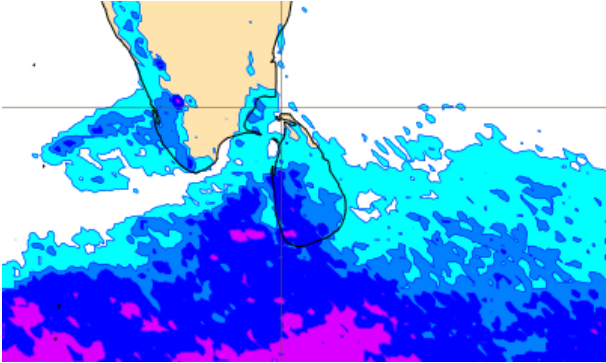
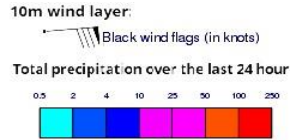
Wind Gust (m/s)



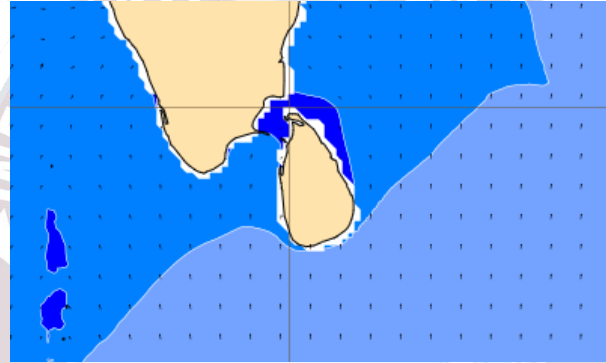
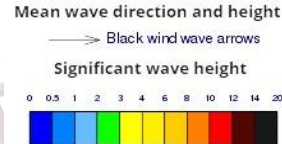
Showers or thundershowers will occur at several places in the sea areas off the coast extending from Puttalam to Galle via Colombo. Showers or thundershowers may occur at a few places in the other sea areas around the island.

Wind speed will be 20-30 kmph in the sea areas around the island.

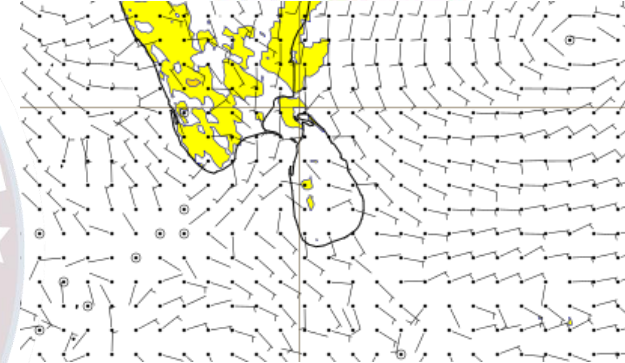
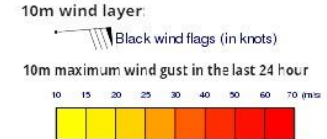
Wind and Rainfall Forecast (Total precipitation for 24 hrs)



Significant wave height (in meters)



Wind Gust (m/s)



Showers or thundershowers will occur at several places in the sea areas off the coast extending from Puttalam to Galle via Colombo. Showers or thundershowers may occur at a few places in the other sea areas around the island.

Wind speed will be 15-30 kmph in the sea areas around the island.



Thank you!