

08 DAYS WEATHER FORECAST FOR COASTAL AREAS AROUND SRI LANKA

Storm Direction

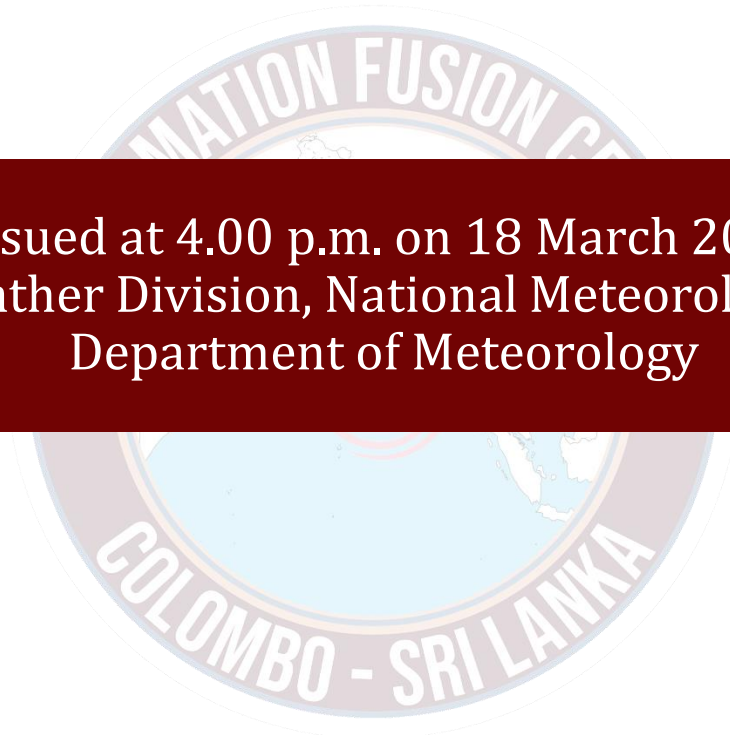


WARNING



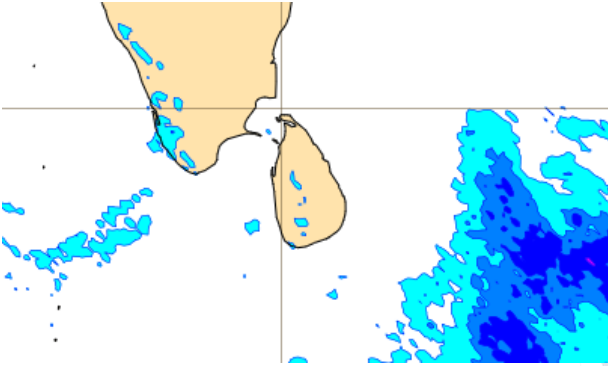
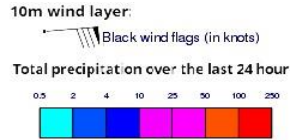
**INFORMATION FUSION CENTRE
COLOMBO**

Know weather before it comes

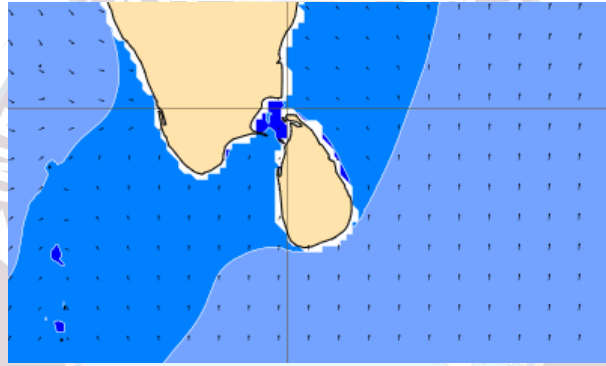
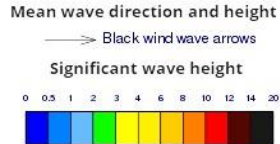


Issued at 4.00 p.m. on 18 March 2024
Marine Weather Division, National Meteorological Centre
Department of Meteorology

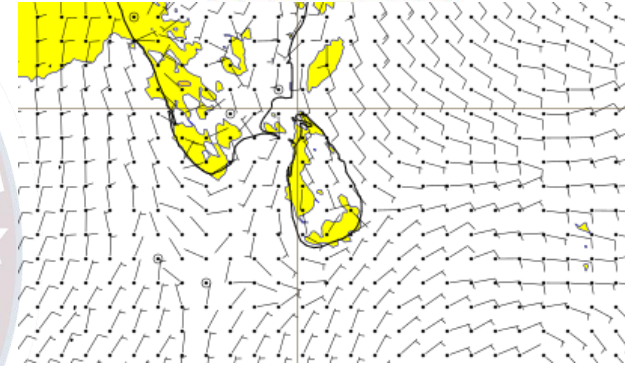
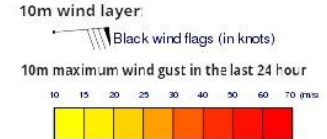
Wind and Rainfall Forecast (Total precipitation for 24 hrs)



Significant wave height (in meters)



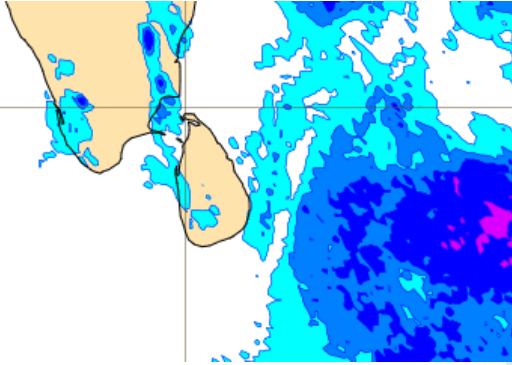
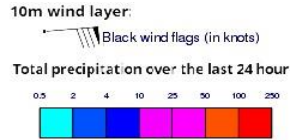
Wind Gust (m/s)



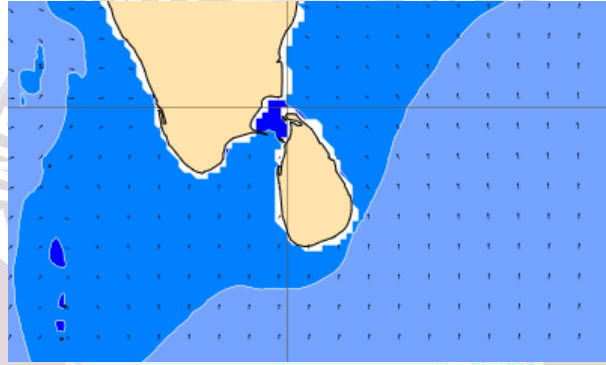
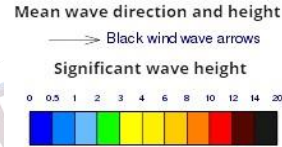
Mainly fair weather will prevail in the sea areas around the island.

Wind speed will be 15-30 kmph in the sea areas around the island.

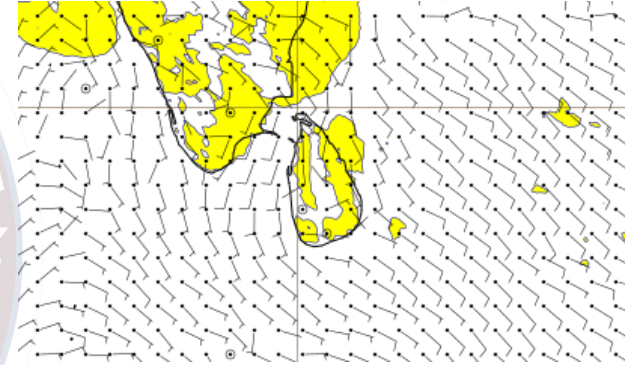
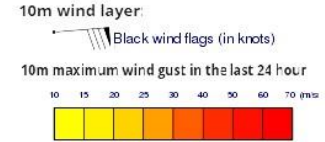
Wind and Rainfall Forecast (Total precipitation for 24 hrs)



Significant wave height (in meters)



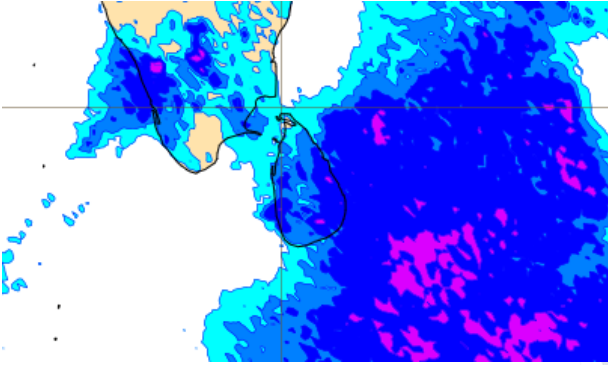
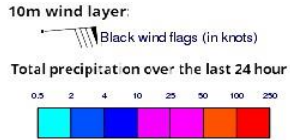
Wind Gust (m/s)



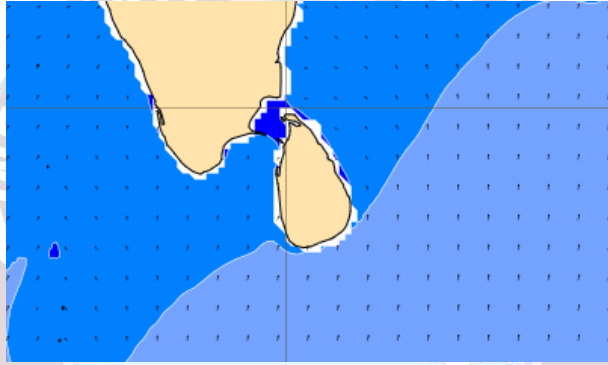
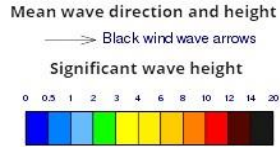
Mainly fair weather will prevail in the sea areas around the island.

Wind speed will be 15-30 kmph in the sea areas around the island. Wind speed can increase up to 45 kmph at times and the sea condition will be fairly rough at times in the sea areas off the coast extending from Mullaitivu to Trincomalee.

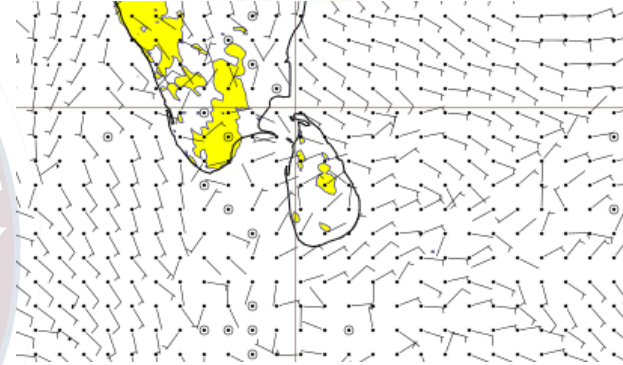
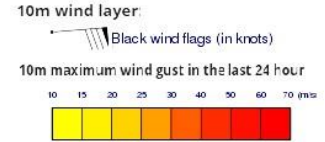
Wind and Rainfall Forecast (Total precipitation for 24 hrs)



Significant wave height (in meters)



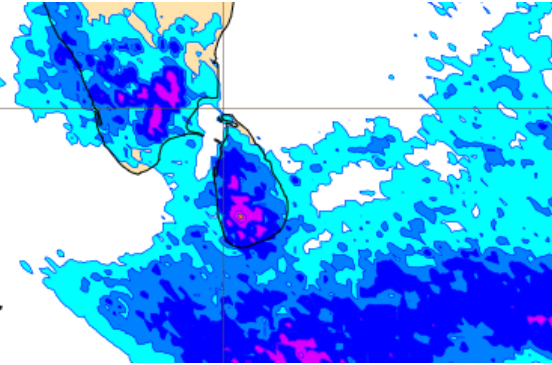
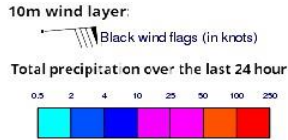
Wind Gust (m/s)



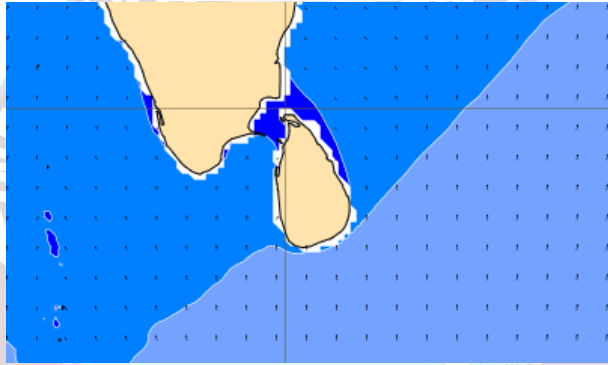
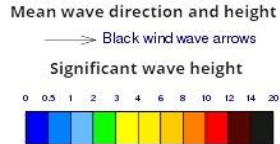
Showers will occur at several places in the sea areas off the coast extending from Trincomalee to Hambantota via Batticaloa. Showers will occur at a few places in the sea other sea areas around the island.

Wind speed will be 15-30 kmph in the sea areas around the island.

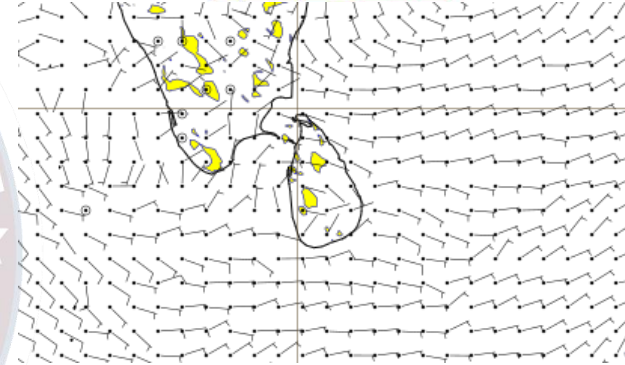
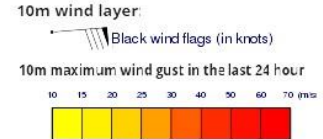
Wind and Rainfall Forecast (Total precipitation for 24 hrs)



Significant wave height (in meters)



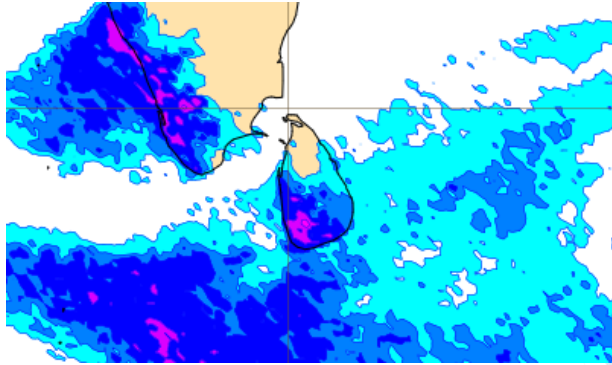
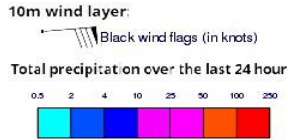
Wind Gust (m/s)



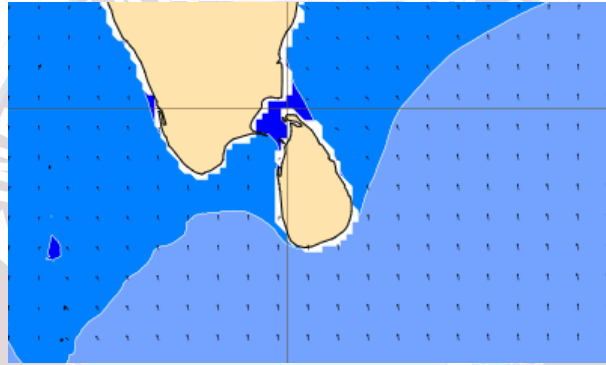
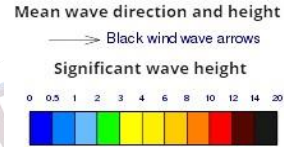
Showers will occur at several places in the sea areas off the coast extending from Puttalam to Hambantota via Galle. Showers will occur at a few places in the sea areas off the coast extending from Hambantota to Batticaloa. Mainly fair weather will prevail in the other sea areas around the island.

Wind speed will be 15-30 kmph in the sea areas around the island.

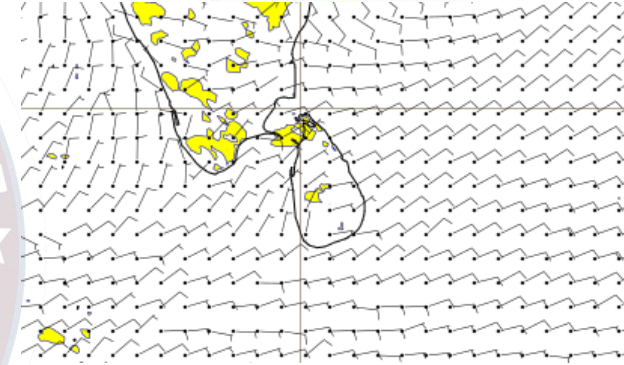
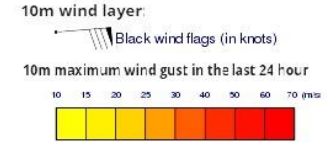
Wind and Rainfall Forecast (Total precipitation for 24 hrs)



Significant wave height (in meters)



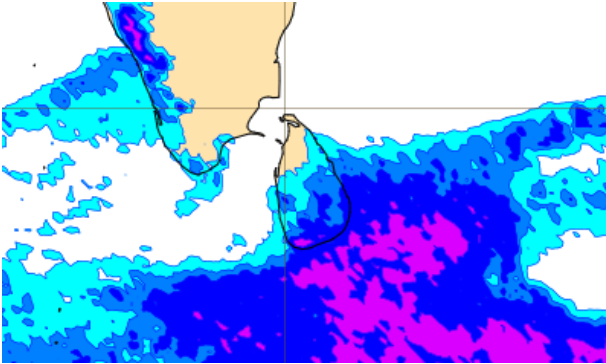
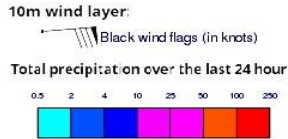
Wind Gust (m/s)



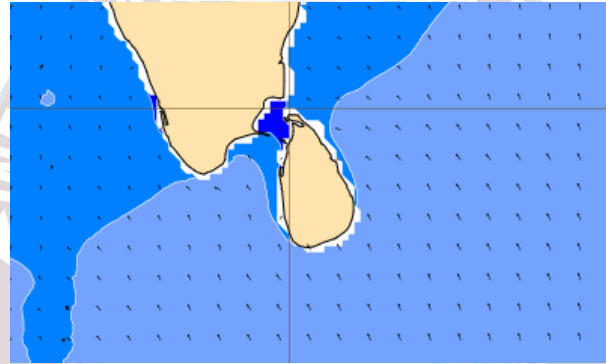
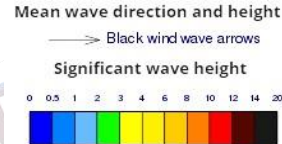
Showers will occur at a few places in the sea areas off the coast extending from Puttalam to Batticaloa via Colombo and Hambantota. Mainly fair weather will prevail in the other sea areas around the island.

Wind speed will be 15-30 kmph in the sea areas around the island.

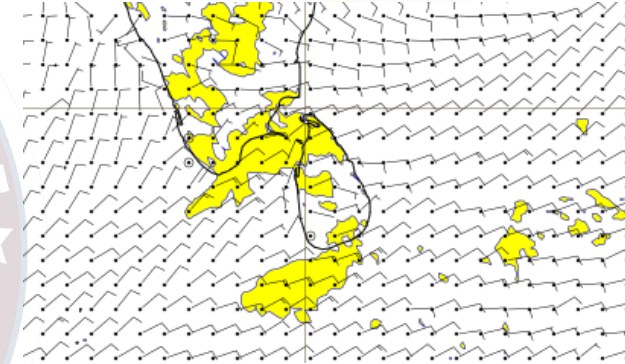
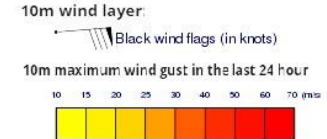
Wind and Rainfall Forecast (Total precipitation for 24 hrs)



Significant wave height (in meters)



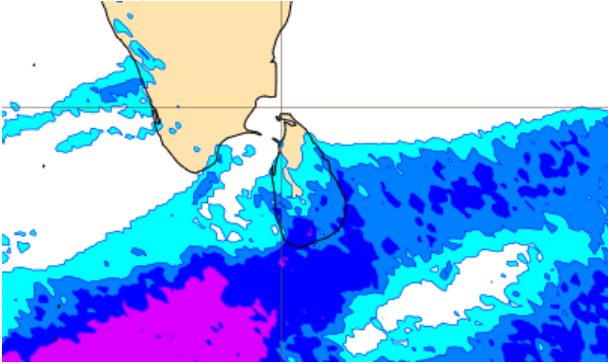
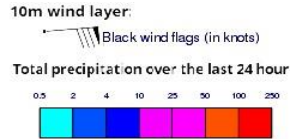
Wind Gust (m/s)



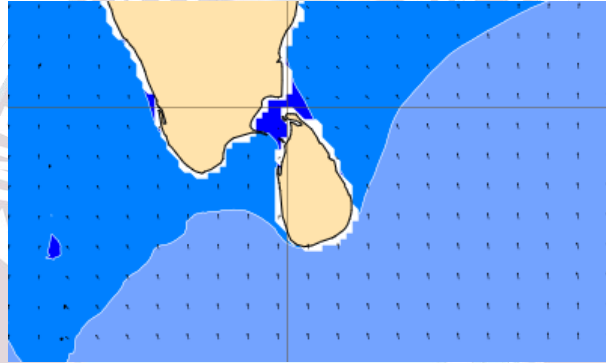
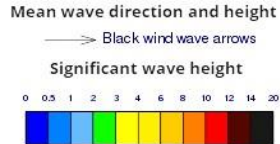
Showers will occur times in the sea areas off the coast extending from Batticaloa to Galle via Hambantota. Showers will occur at a few places in the sea areas off the coast extending from Puttalam to Galle and from Trincomalee to Batticaloa. Mainly fair weather will prevail in the other sea areas around the island.

Wind speed will be 15-30 kmph in the sea areas around the island. Wind speed can increase up to 45 kmph at times and the sea condition will be fairly rough at times in the sea areas off the coast extending from Puttalam to Kankasanturai via Mannar and from Galle to Matara.

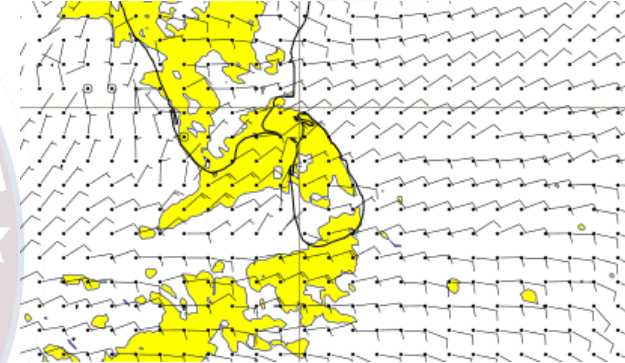
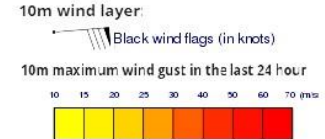
Wind and Rainfall Forecast (Total precipitation for 24 hrs)



Significant wave height (in meters)



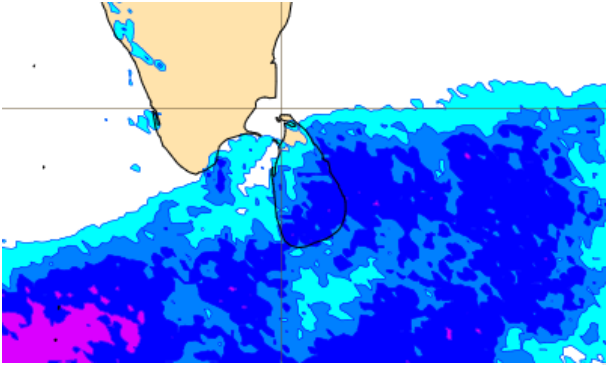
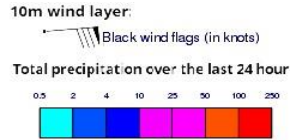
Wind Gust (m/s)



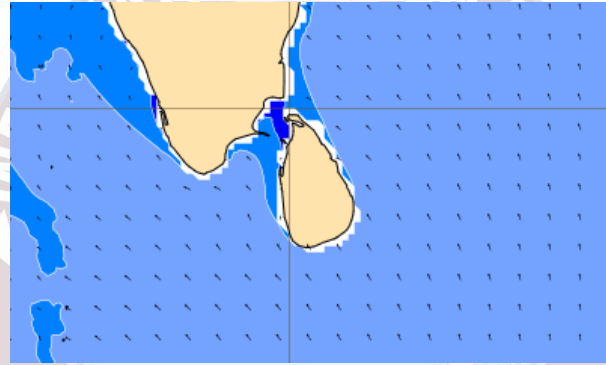
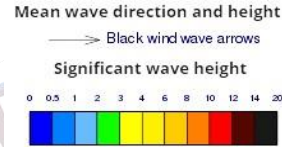
Showers will occur at several places in the sea areas off the coast extending from Batticaloa to Galle via Hambantota. Showers will occur at a few places in the sea areas off the coast extending from Puttalam to Galle and from Trincomalee to Batticaloa. Mainly fair weather will prevail in the other sea areas around the island.

Wind speed will be 15-30 kmph in the sea areas around the island. Wind speed can increase up to 45 kmph at times and the sea condition will be fairly rough at times in the sea areas off the coast extending from Puttalam to Kankasanturai via Mannar and from Galle to Hambantota via Matara.

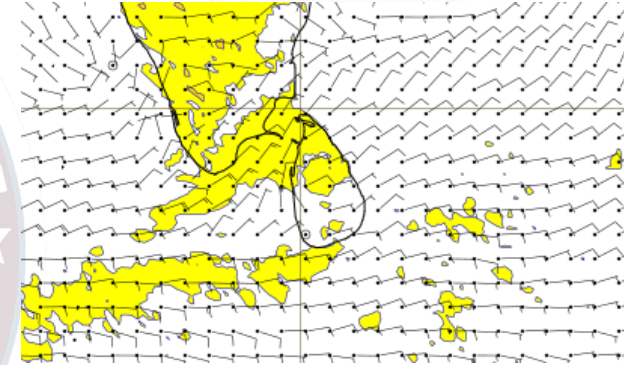
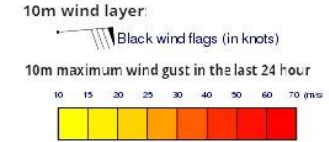
Wind and Rainfall Forecast (Total precipitation for 24 hrs)



Significant wave height (in meters)



Wind Gust (m/s)



Showers will occur at several places in the sea areas off the coast extending from Trincomalee to Hambantota via Batticaloa. Showers will occur at a few places in the sea other sea areas around the island.

Wind speed will be 15-30 kmph in the sea areas around the island. Wind speed can increase up to 45 kmph at times and the sea condition will be fairly rough at times in the sea areas off the coast extending from Puttalam to Kankasanturai via Mannar and from Galle to Matara.



Thank you!