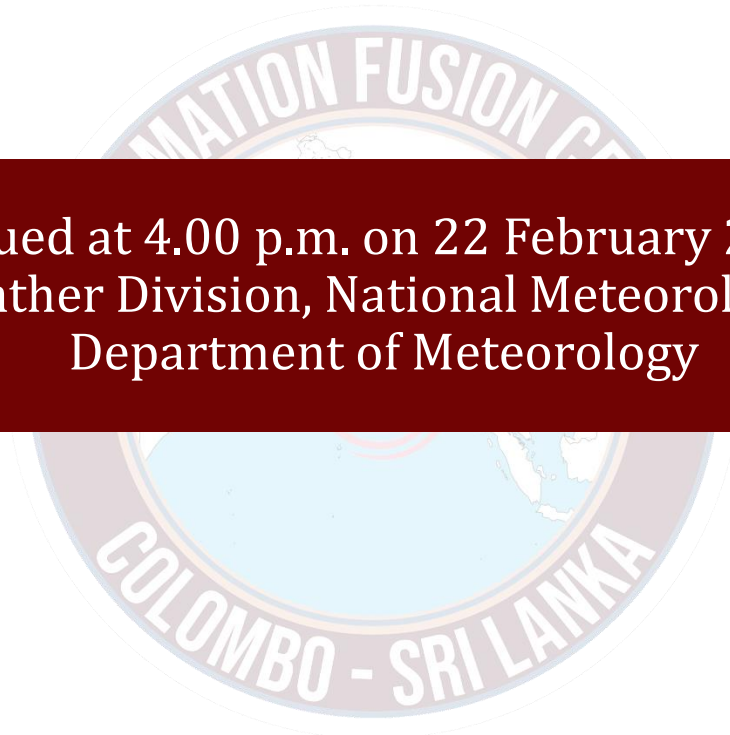




# 08 DAYS WEATHER FORECAST FOR COASTAL AREAS AROUND SRI LANKA

**INFORMATION FUSION CENTRE  
COLOMBO**



Issued at 4.00 p.m. on 22 February 2024  
Marine Weather Division, National Meteorological Centre  
Department of Meteorology

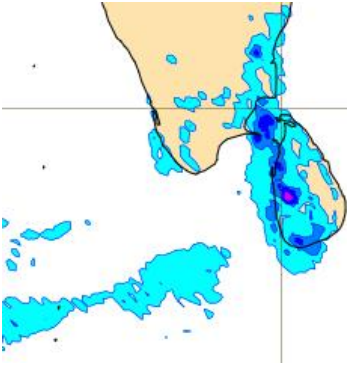
## Wind and Rainfall Forecast (Total precipitation for 24 hrs)

10m wind layer:

Black wind flags (in knots)

Total precipitation over the last 24 hour

0.5 2 4 10 25 50 100 200



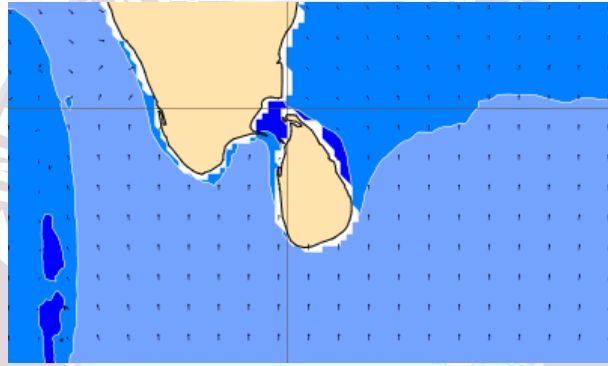
## Significant wave height (in meters)

Mean wave direction and height

Black wind wave arrows

Significant wave height

0 0.5 1 2 3 4 6 8 10 12 14 20



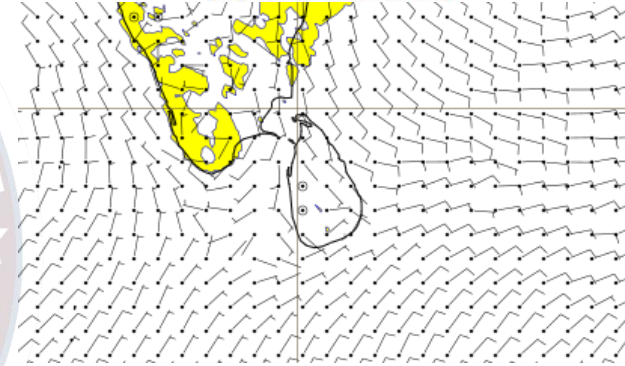
## Wind Gust (m/s)

10m wind layer:

Black wind flags (in knots)

10m maximum wind gust in the last 24 hour

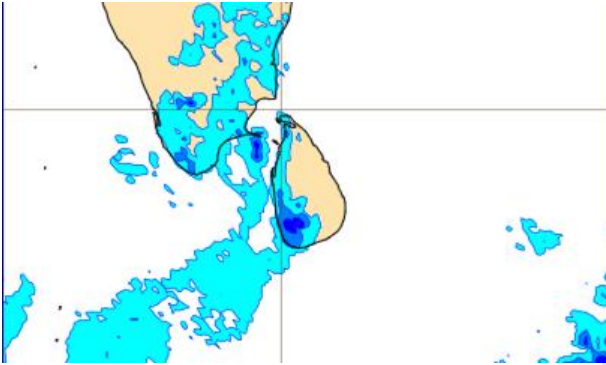
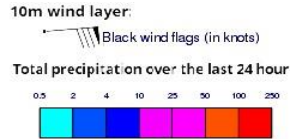
10 15 20 25 30 40 50 60 70 (m/s)



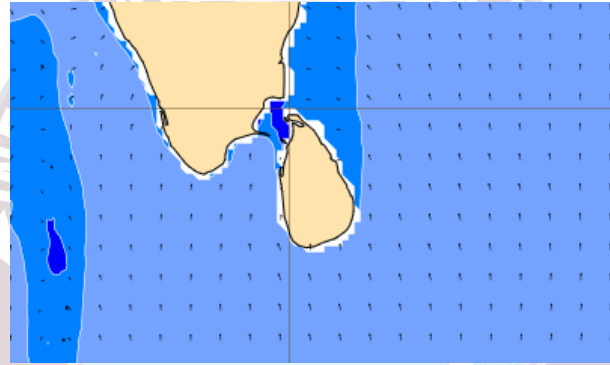
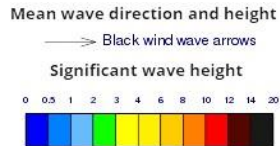
Showers will occur at a few places in the sea areas off the coast extending from Kankasanturai to Matarara via Puttalam, Colombo and Galle. Mainly fair weather will prevail in the other sea areas around the island.

Wind speed will be 10-20 kmph in the sea areas around the island.

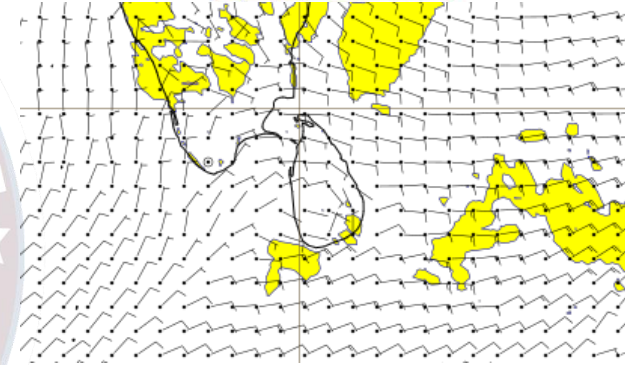
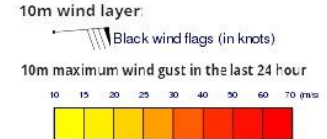
## Wind and Rainfall Forecast (Total precipitation for 24 hrs)



## Significant wave height (in meters)



## Wind Gust (m/s)

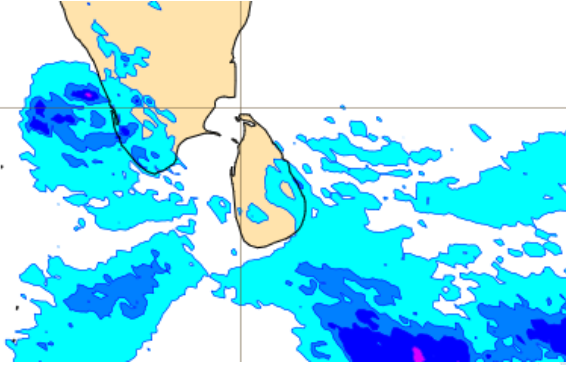
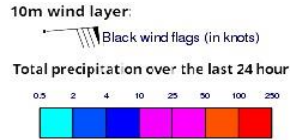


Showers will occur at a few places in the sea areas off the coast extending from Colombo to Galle. Mainly fair weather will prevail in the other sea areas around the island.

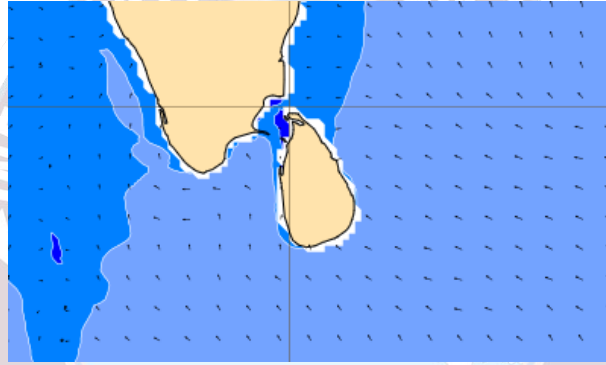
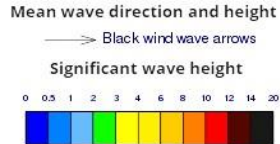
Wind speed will be 10-20 kmph in the sea areas around the island.



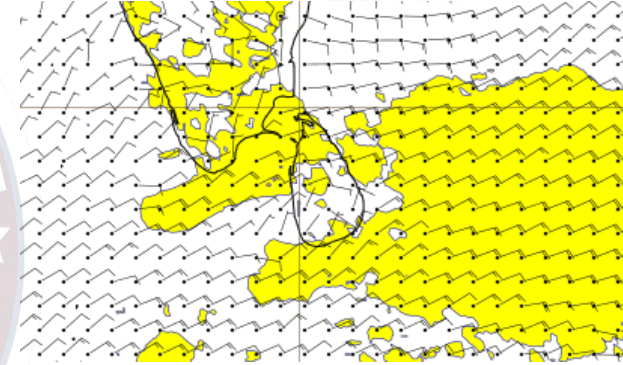
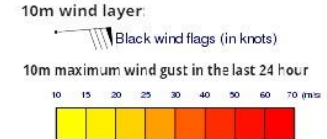
## Wind and Rainfall Forecast (Total precipitation for 24 hrs)



## Significant wave height (in meters)



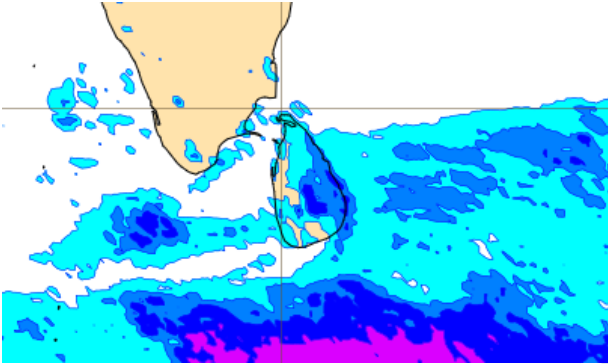
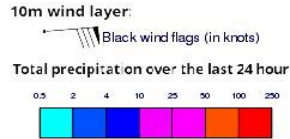
## Wind Gust (m/s)



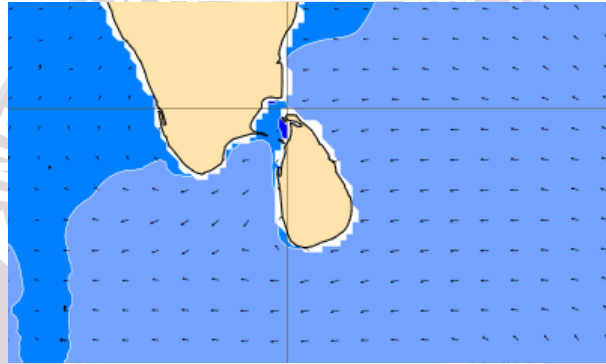
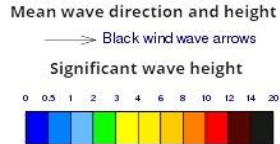
Showers will occur at a few places in the sea areas off the coast extending from Hambantota to Batticaloa. Mainly fair weather will prevail in the other sea areas around the island.

Wind speed will be 15-30 kmph in the sea areas around the island. Wind speed can increase up to 40-50 kmph at times and the sea condition will be fairly rough at times in the sea areas off the coast extending from Puttalam to Kankasanturai via Mannar and, also from Galle to Pottuvil via Matara to Hambantota.

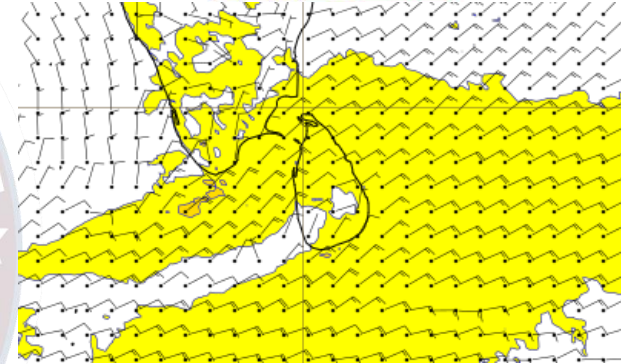
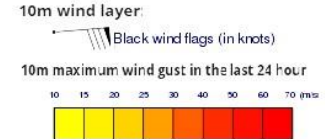
## Wind and Rainfall Forecast (Total precipitation for 24 hrs)



## Significant wave height (in meters)



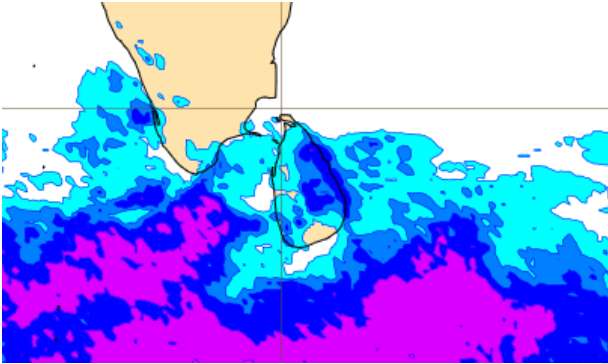
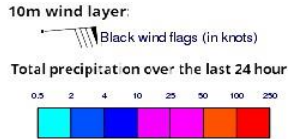
## Wind Gust (m/s)



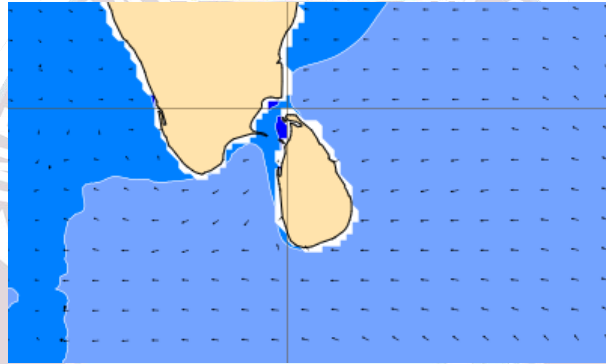
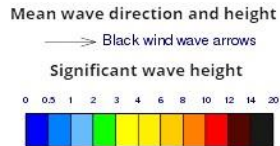
Showers will occur at a few places in the sea areas off the coast extending from Trincomalee to Hambantota via Batticaloa. Mainly fair weather will prevail in the other sea areas around the island.

Wind speed will be 20-30 kmph in the sea areas around the island. Wind speed can increase up to 55 kmph at times and the sea condition will be rough at times in the sea areas off the coast extending from Colombo to Mannar via Puttalam, and also from Matara to Pottuvil via Hambantota. Wind speed can increase up to 40 kmph at times and the sea condition will be moderate at times in the sea areas around the island except from Colombo to Galle.

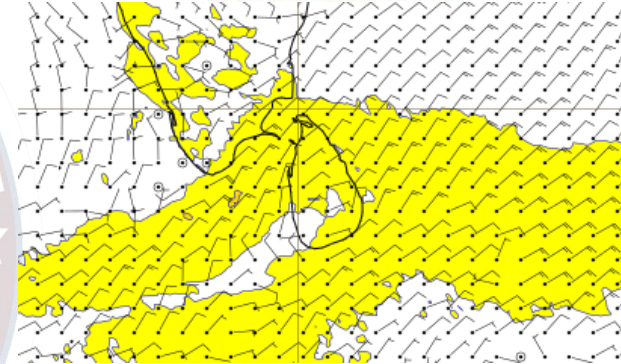
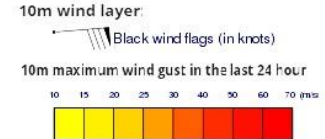
## Wind and Rainfall Forecast (Total precipitation for 24 hrs)



## Significant wave height (in meters)



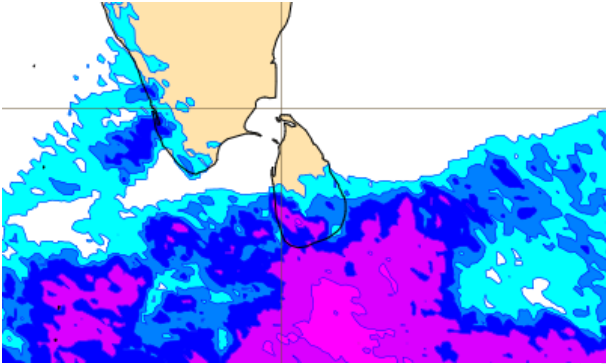
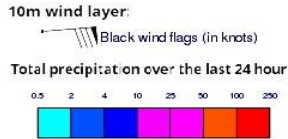
## Wind Gust (m/s)



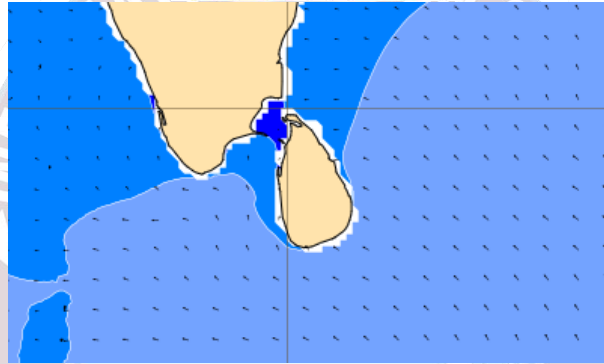
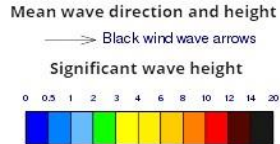
Showers will occur at a few places in the sea areas off the coast extending from Trincomalee to Hambantota via Batticaloa and from Colombo to Galle.

Wind speed will be 20-30 kmph in the sea areas around the island. Wind speed can increase up to 55 kmph at times and the sea condition will be rough at times in the sea areas off the coast extending from Colombo to Mannar via Puttalam, and also from Matara to Pottuvil via Hambantota. Wind speed can increase up to 45 kmph at times and the sea condition will be fairly rough at times in the sea areas around the island except from Colombo to Galle.

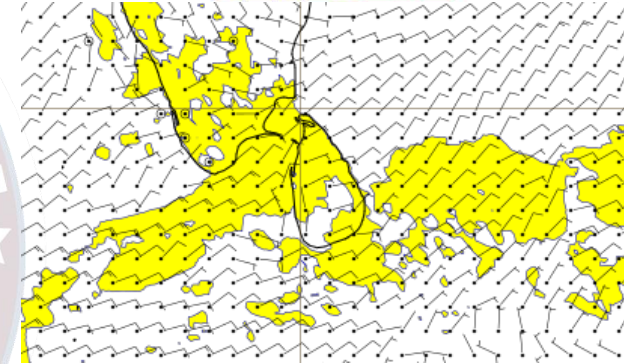
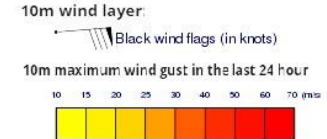
## Wind and Rainfall Forecast (Total precipitation for 24 hrs)



## Significant wave height (in meters)



## Wind Gust (m/s)

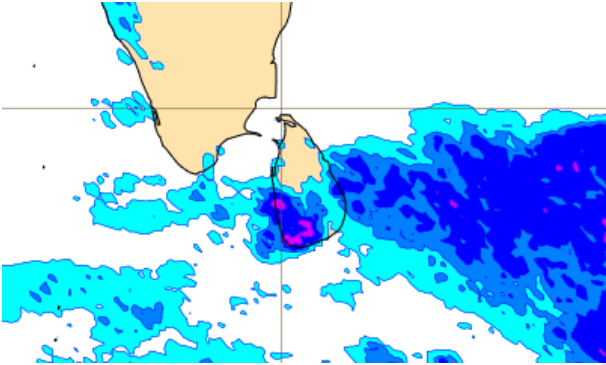
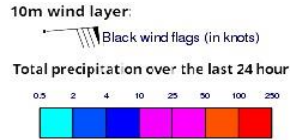


Showers will occur at a several places in the sea areas off the coast extending from Colombo to Batticaloa via Galle, Hambantota. Mainly fair weather will prevail in the other sea areas around the island.

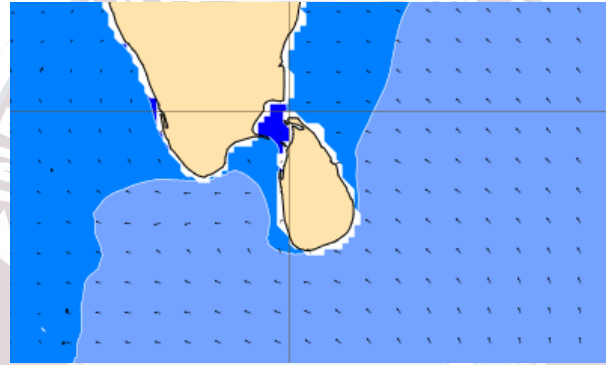
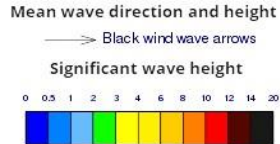
Wind speed will be 20-30 kmph in the sea areas around the island. Wind speed can increase up to 40-45 kmph at times and the sea condition will be fairly rough at times in the sea areas off the coast extending from Colombo to Kankasanturai via Puttalam and Mannar, and also from Galle to Pottuvil via Matara and Hambantota.



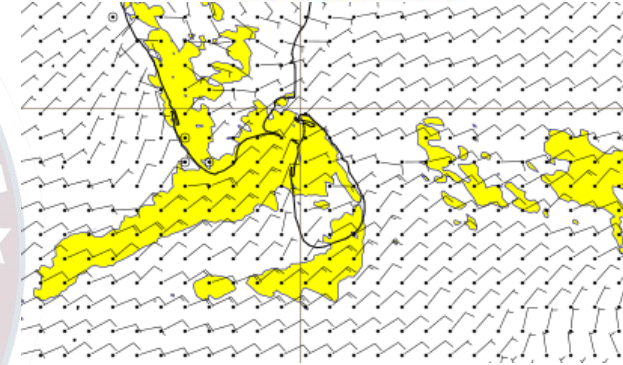
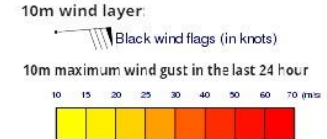
## Wind and Rainfall Forecast (Total precipitation for 24 hrs)



## Significant wave height (in meters)



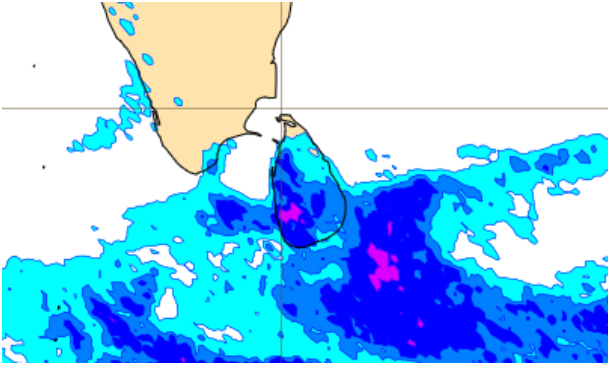
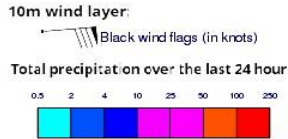
## Wind Gust (m/s)



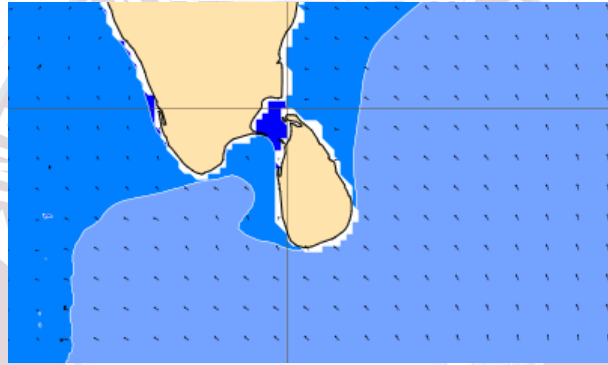
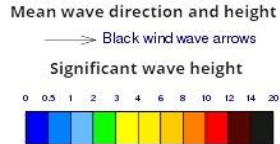
Showers will occur at a several places in the sea areas off the coast extending from Colombo to Galle and from Hambantota to Batticaloa. Mainly fair weather will prevail in the other sea areas around the island.

Wind speed will be 15-25 kmph in the sea areas around the island. Wind speed can increase up to 40-45 kmph at times and the sea condition will be fairly rough at times in the sea areas off the coast extending from Puttalam to Kankasanturai via Mannar, and also from Galle to Hambantota via Matara.

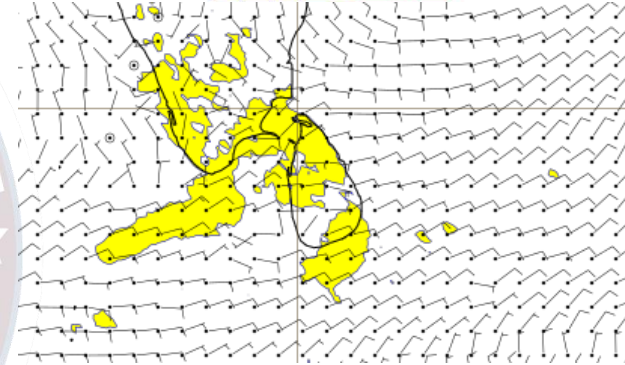
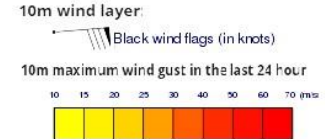
## Wind and Rainfall Forecast (Total precipitation for 24 hrs)



## Significant wave height (in meters)



## Wind Gust (m/s)



Showers will occur at a several places in the sea areas off the coast extending from Colombo to Batticaloa via Galle, Hambantota. Mainly fair weather will prevail in the other sea areas around the island.

Wind speed will be 15-25 kmph in the sea areas around the island. Wind speed can increase up to 40-45 kmph at times and the sea condition will be fairly rough at times in the sea areas off the coast extending from Puttalam to Kankasanturai via Mannar, and also from Matara to Hambantota.



Thank you!