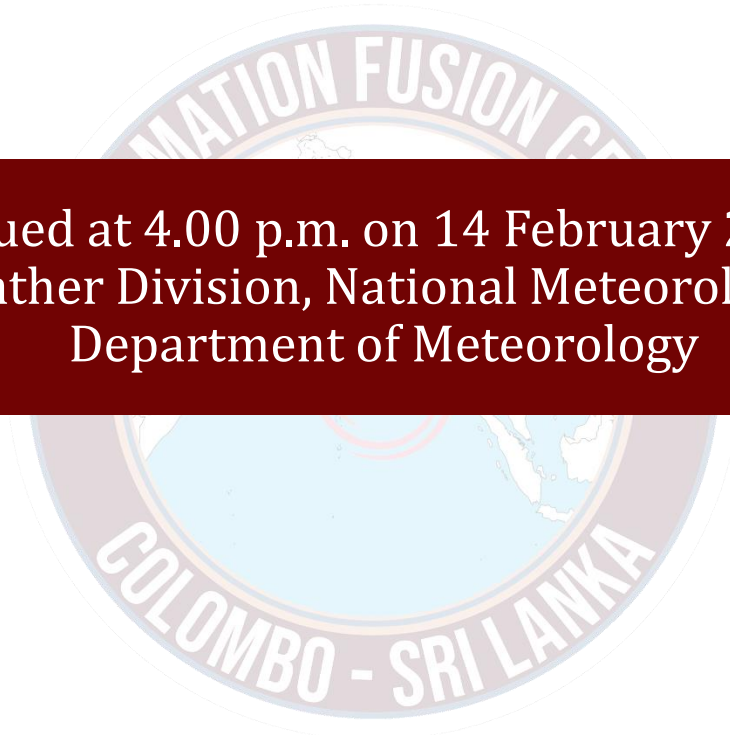




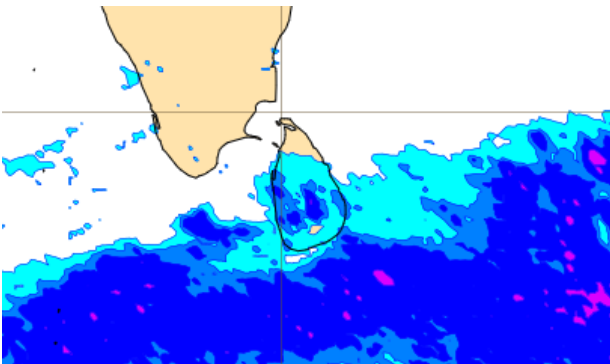
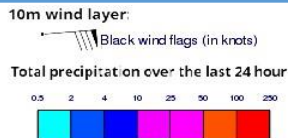
INFORMATION FUSION CENTRE COLOMBO

**08 DAYS WEATHER FORECAST FOR COASTAL AREAS
AROUND SRI LANKA**

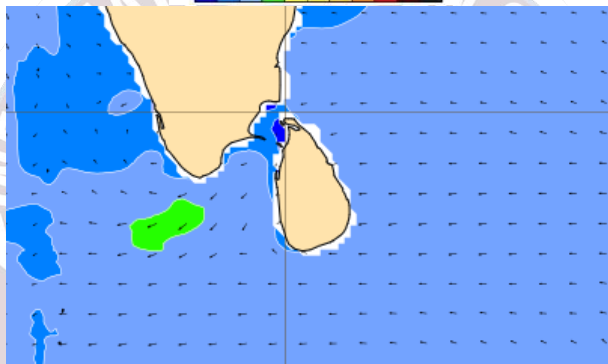
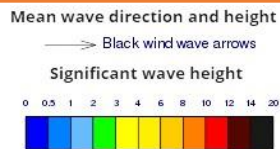


Issued at 4.00 p.m. on 14 February 2024
Marine Weather Division, National Meteorological Centre
Department of Meteorology

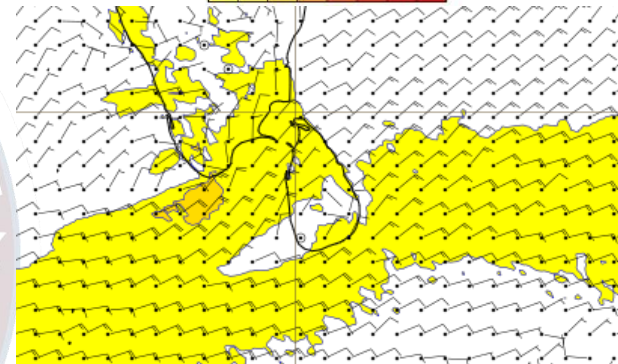
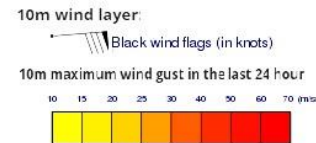
Wind and Rainfall Forecast (Total precipitation for 24 hrs)



Significant wave height (in meters)



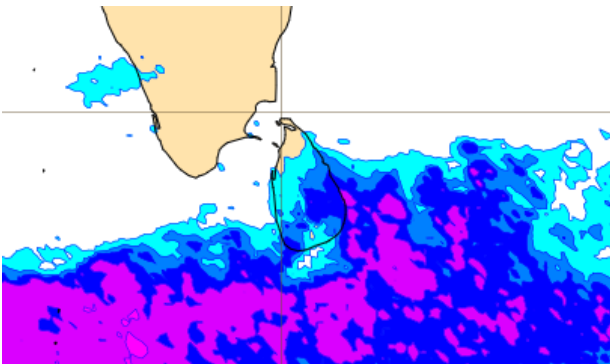
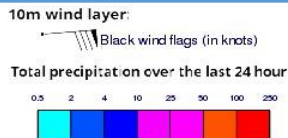
Wind Gust (m/s)



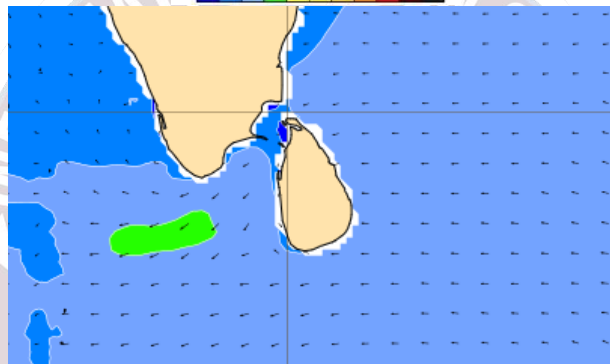
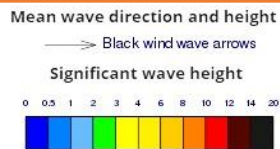
Showers will occur at a several places in the sea areas off the coast extending from Colombo to Batticaloa via Galle, Hambantota. Mainly fair weather will prevail in the other sea areas around the island.

Wind speed will be 25-35 kmph in the sea areas around the island. Wind speed can increase up to 55 kmph at times and the sea condition will be rough at times in the sea areas off the coast extending from Colombo to Kankasanturai via Puttalam and Mannar, and also from Matara to Pottuvil via Hambantota.

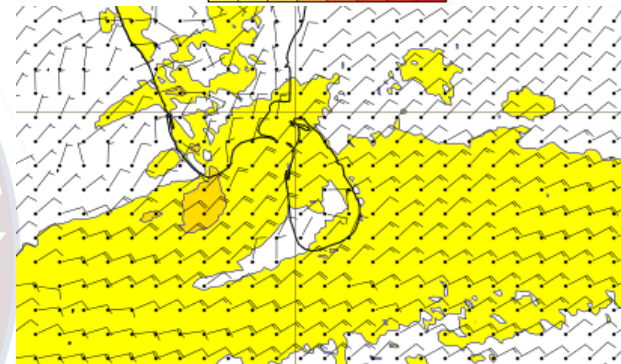
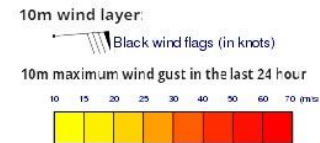
Wind and Rainfall Forecast (Total precipitation for 24 hrs)



Significant wave height (in meters)



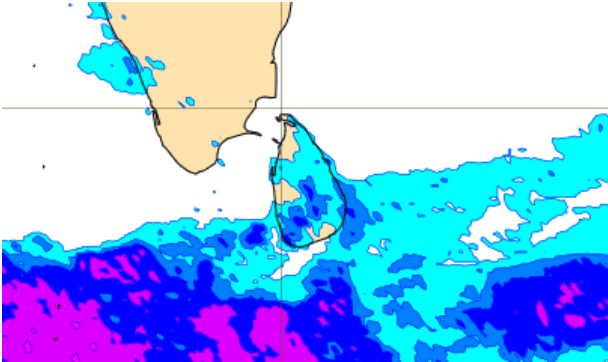
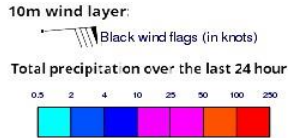
Wind Gust (m/s)



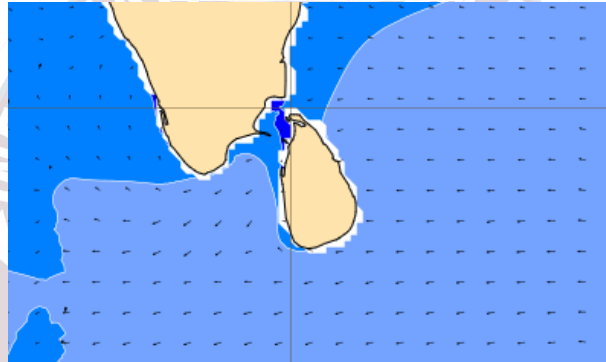
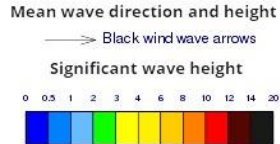
Showers will occur at a several places in the sea areas off the coast extending from Colombo to Mullaitivu via Galle, Hambantota and Batticaloa. Mainly fair weather will prevail in the other sea areas around the island.

Wind speed will be 25-35 kmph in the sea areas around the island. Wind speed can increase up to 55 kmph at times and the sea condition will be rough at times in the sea areas off the coast extending from Colombo to Kankasanturai via Puttalam and Mannar, and also from Matara to Pottuvil via Hambantota. Wind speed can increase up to 40 kmph at times and the sea condition can be moderate at times the other sea areas around the island

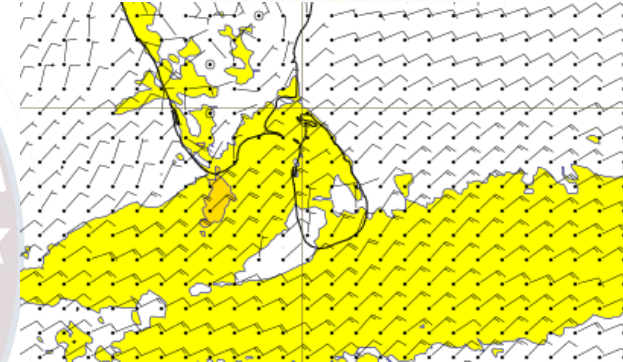
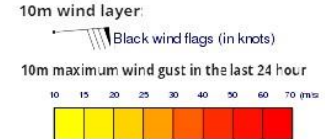
Wind and Rainfall Forecast (Total precipitation for 24 hrs)



Significant wave height (in meters)



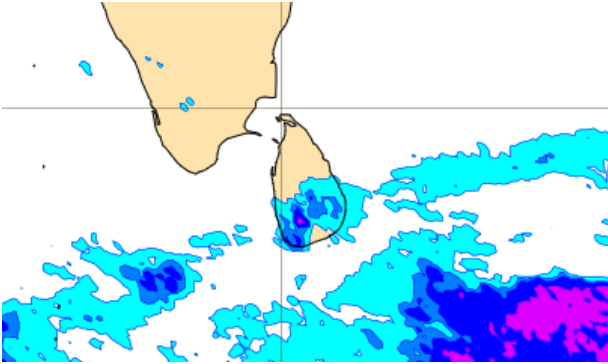
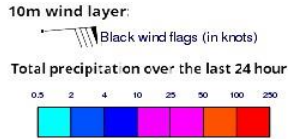
Wind Gust (m/s)



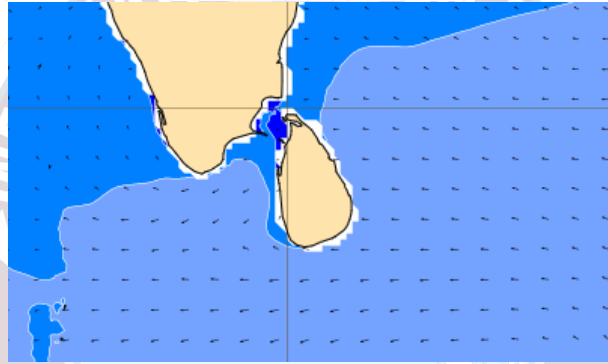
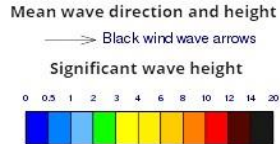
Showers will occur at a few places in the sea areas off the coast extending from Colombo to Batticaloa via Galle and Hambantota. Mainly fair weather will prevail in the other sea areas around the island.

Wind speed will be 25-35 kmph in the sea areas around the island. Wind speed can increase up to 55 kmph at times and the sea condition will be rough at times in the sea areas off the coast extending from Colombo to Kankasanturai via Puttalam and Mannar, and also from Matara to Pottuvil via Hambantota.

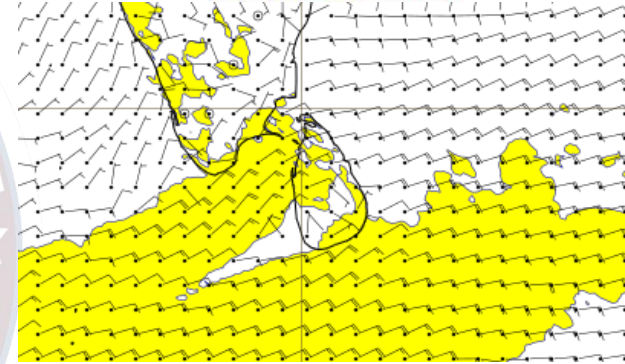
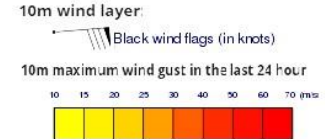
Wind and Rainfall Forecast (Total precipitation for 24 hrs)



Significant wave height (in meters)



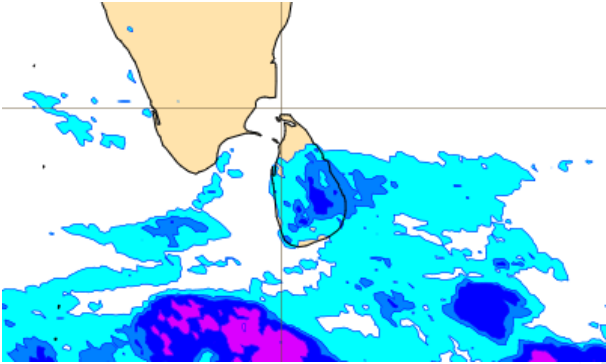
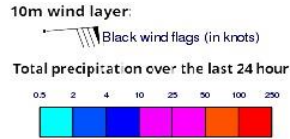
Wind Gust (m/s)



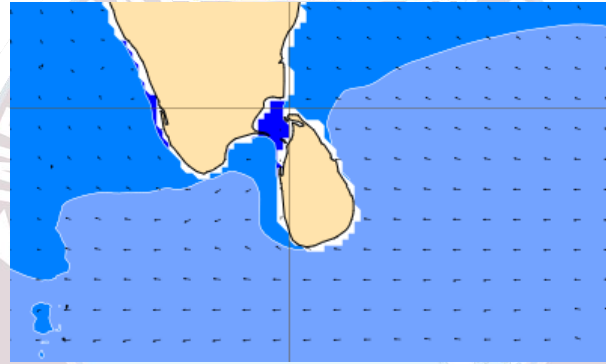
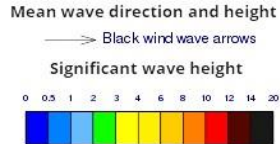
Showers will occur at a few places in the sea areas off the coast extending from Hambantota to Batticaloa. Mainly fair weather will prevail in the other sea areas around the island.

Wind speed will be 25-35 kmph in the sea areas around the island. Wind speed can increase up to 50 kmph at times and the sea condition will be rough at times in the sea areas off the coast extending from Colombo to Kankasanturai via Puttalam and Mannar, and also from Matara to Pottuvil via Hambantota.

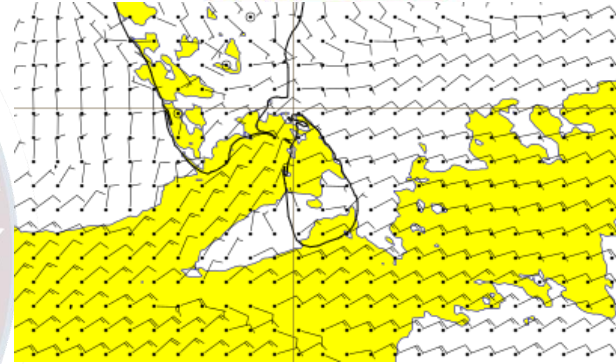
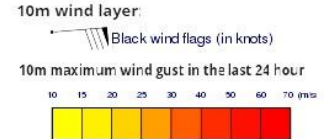
Wind and Rainfall Forecast (Total precipitation for 24 hrs)



Significant wave height (in meters)



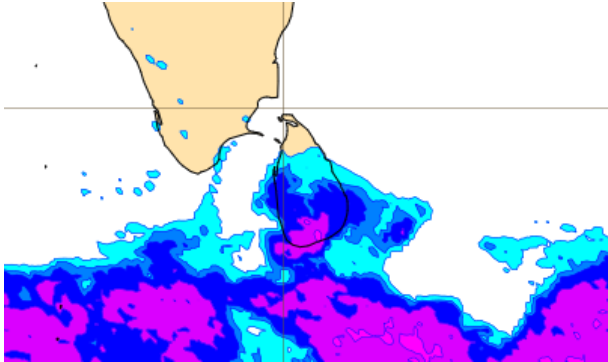
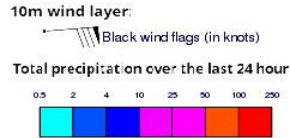
Wind Gust (m/s)



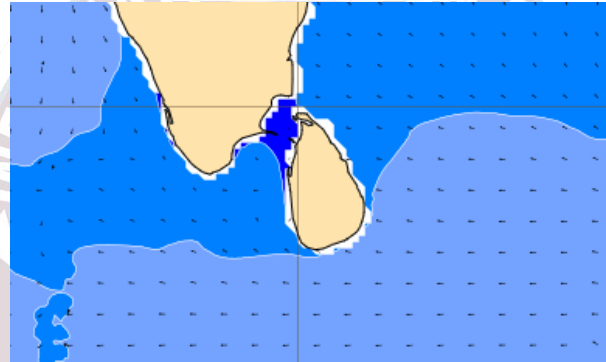
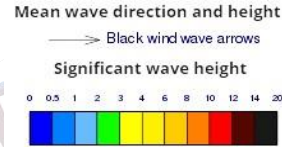
Showers will occur at a few places in the sea areas off the coast extending from Hambantota to Trincomalee via Batticaloa. Mainly fair weather will prevail in the other sea areas around the island.

Wind speed will be 20-30 kmph in the sea areas around the island. Wind speed can increase up to 50 kmph at times and the sea condition will be rough at times in the sea areas off the coast extending from Colombo to Mannar via Puttalam, and also from Matara to Pottuvil via Hambantota.

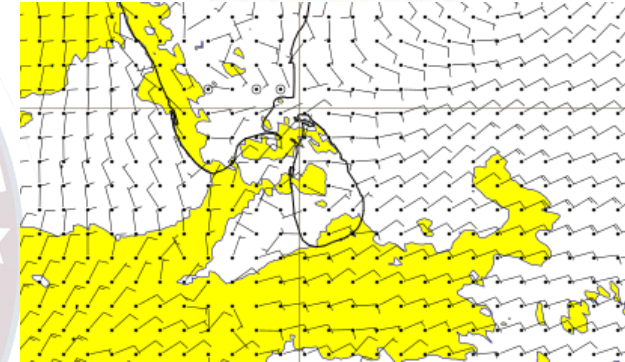
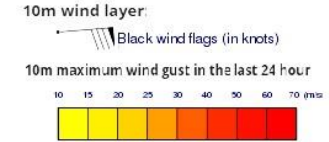
Wind and Rainfall Forecast (Total precipitation for 24 hrs)



Significant wave height (in meters)



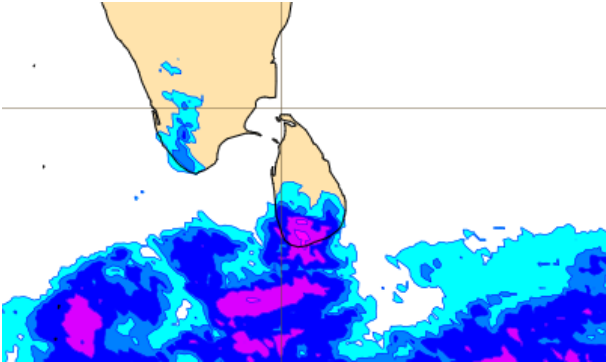
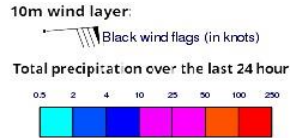
Wind Gust (m/s)



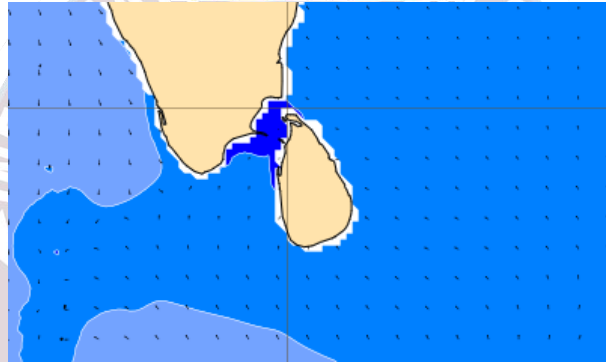
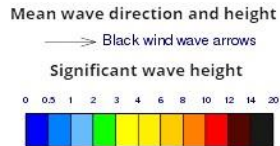
Showers will occur at a several places in the sea areas off the coast extending from Puttalam to Trincomalee via Colombo, Galle, Hambantota and Batticaloa. Mainly fair weather will prevail in the other sea areas around the island.

Wind speed will be 20-30 kmph in the sea areas around the island. Wind speed can increase up to 40-50kmph at times and the sea condition will be rough at times in the sea areas off the coast extending from Puttalam to Mannar, and also from Matara to Hambantota.

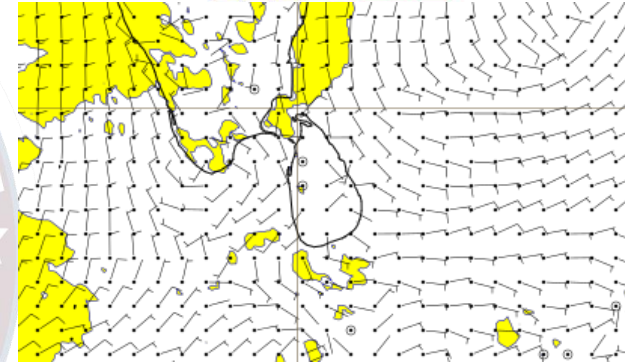
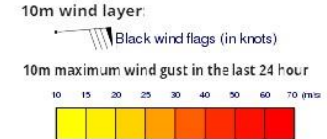
Wind and Rainfall Forecast (Total precipitation for 24 hrs)



Significant wave height (in meters)



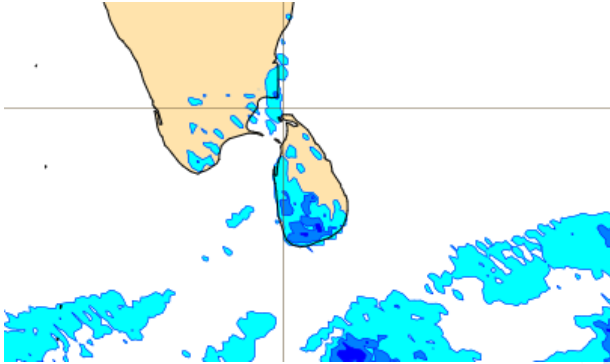
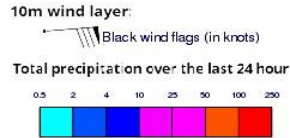
Wind Gust (m/s)



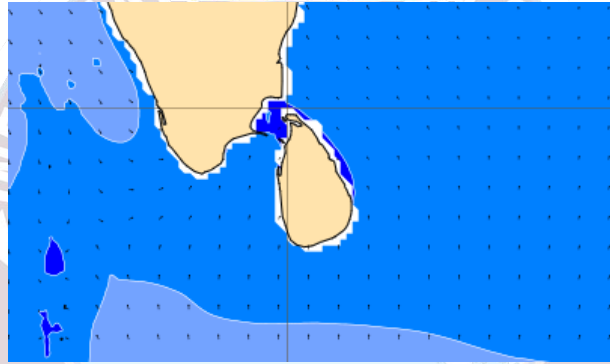
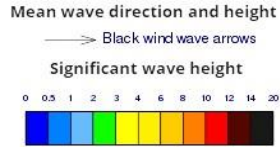
Showers will occur at a several places in the sea areas off the coast extending from Colombo to Hambantotavia Galle. Mainly fair weather will prevail in the other sea areas around the island.

Wind speed will be 20-30 kmph in the sea areas around the island.

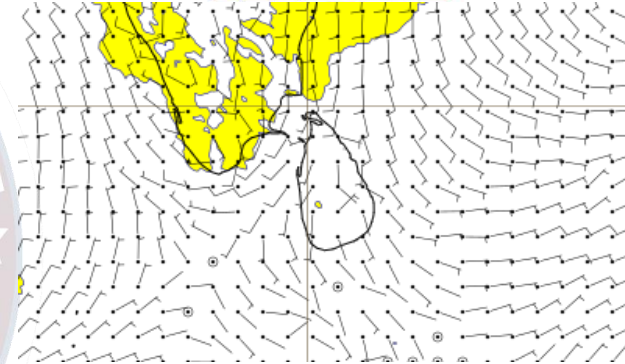
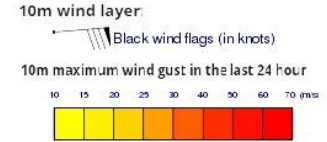
Wind and Rainfall Forecast (Total precipitation for 24 hrs)



Significant wave height (in meters)



Wind Gust (m/s)



Mainly fair weather will prevail in the sea areas around the island.

Wind speed will be 20-30 kmph in the sea areas around the island.



Thank you!