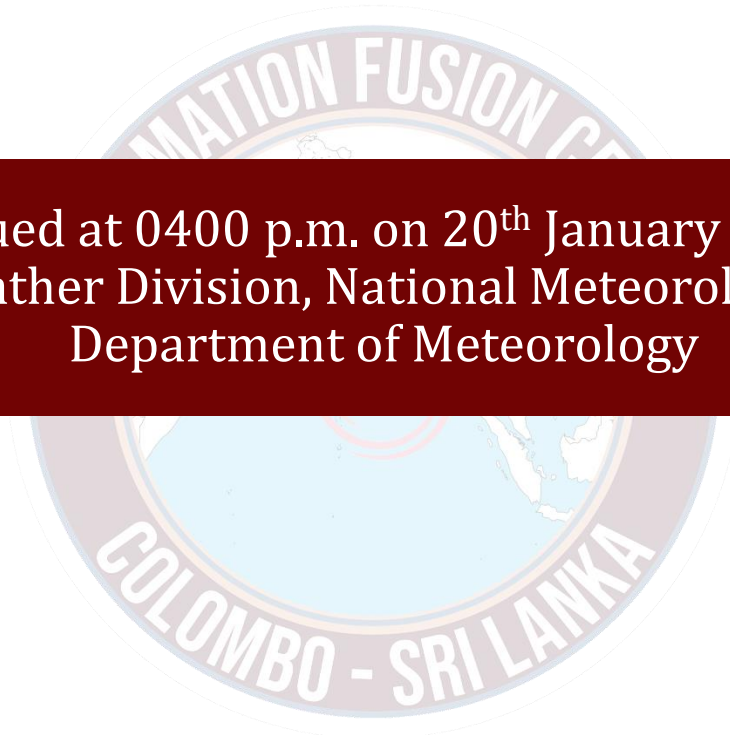




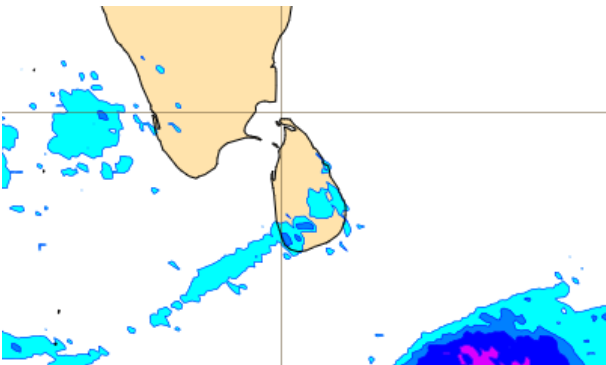
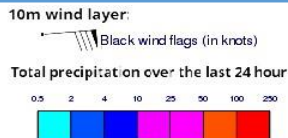
INFORMATION FUSION CENTRE COLOMBO

**07 DAYS WEATHER FORECAST FOR COASTAL AREAS
AROUND SRI LANKA**

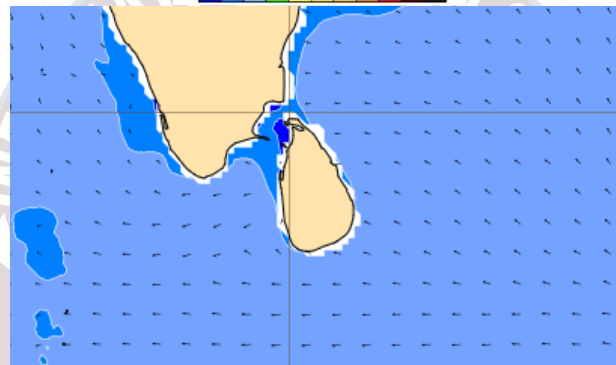
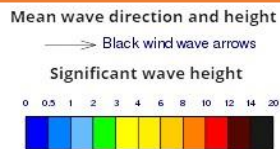


Issued at 0400 p.m. on 20th January 2024
Marine Weather Division, National Meteorological Centre
Department of Meteorology

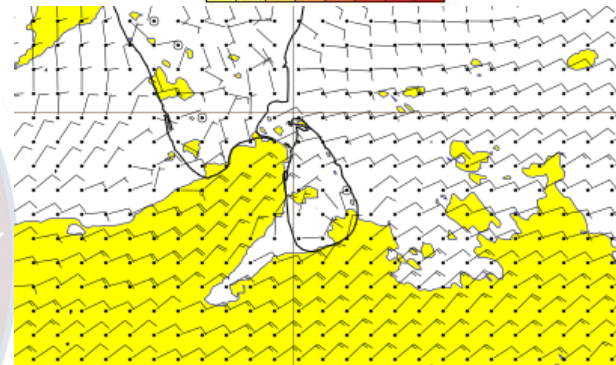
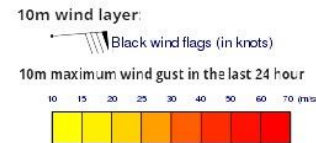
Wind and Rainfall Forecast (Total precipitation for 24 hrs)



Significant wave height (in meters)



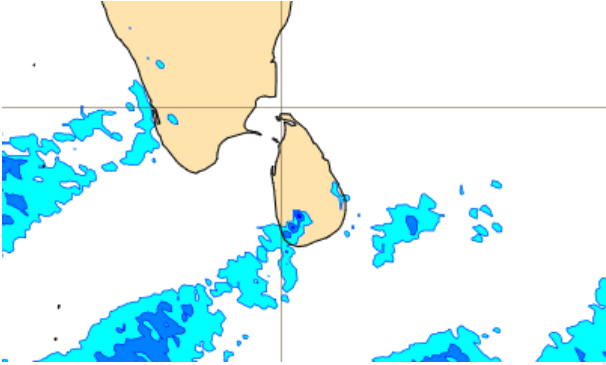
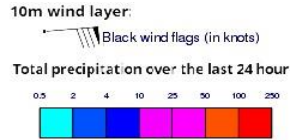
Wind Gust (m/s)



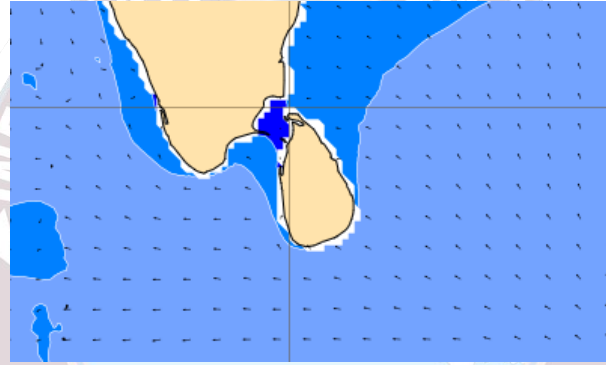
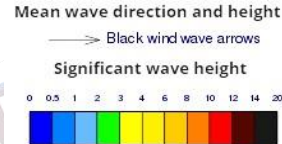
Mainly fair weather will prevail in the sea areas around the island except for a few showers in the sea areas off the coast extending from Colombo to Galle.

Wind speed will be 20-30 kmph in the sea areas around the island and wind speed can be increased up to 40- 50 kmph at times and sea condition will be rough at times in the sea areas extending from Colombo to Mannar via Puttalam and, also from Galle to Pottuvil via Matara and Hambantota.

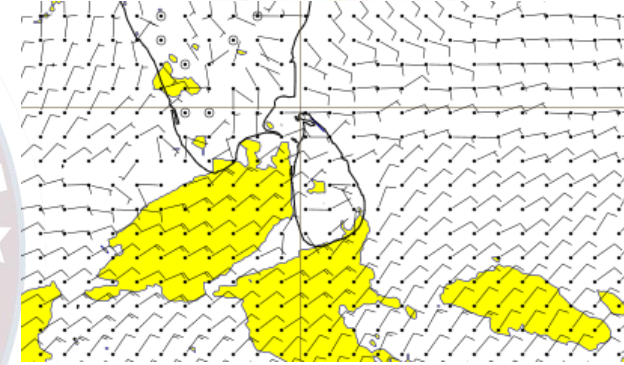
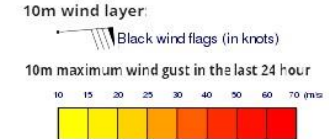
Wind and Rainfall Forecast (Total precipitation for 24 hrs)



Significant wave height (in meters)



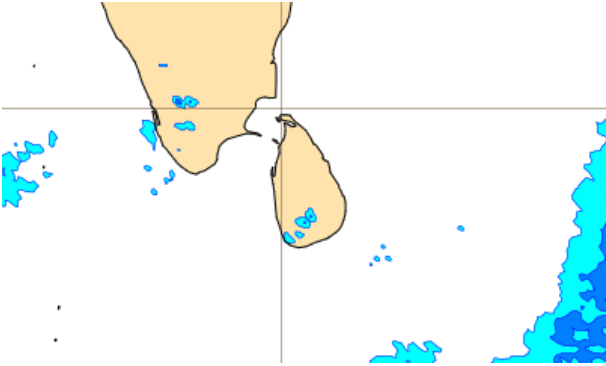
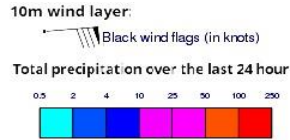
Wind Gust (m/s)



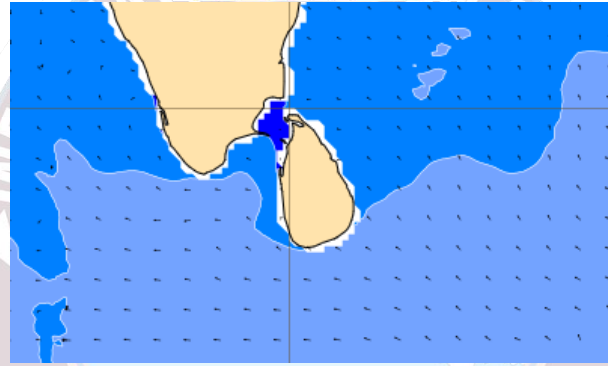
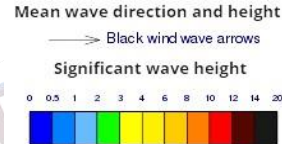
Mainly fair weather will prevail in the sea areas around the island except for few showers in the sea areas off the coast extending from Colombo to Galle.

Wind speed will be 20-30 kmph in the sea areas around the island and wind speed can be increased up to 40- 50 kmph at times and sea condition will be rough at times in the sea areas extending from Colombo to Kankasanturai via Mannar and, also from Galle to Hambantota via Matara.

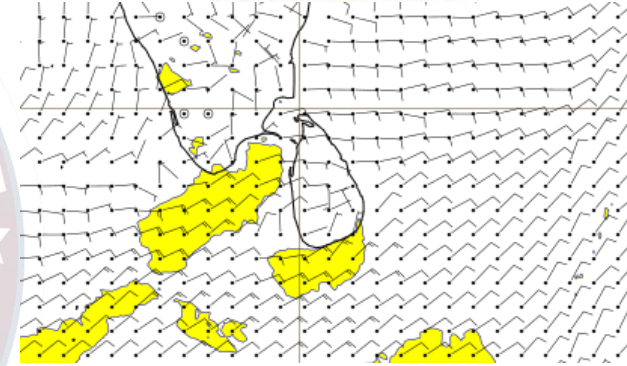
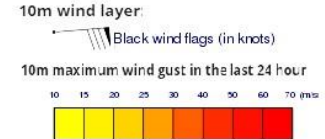
Wind and Rainfall Forecast (Total precipitation for 24 hrs)



Significant wave height (in meters)



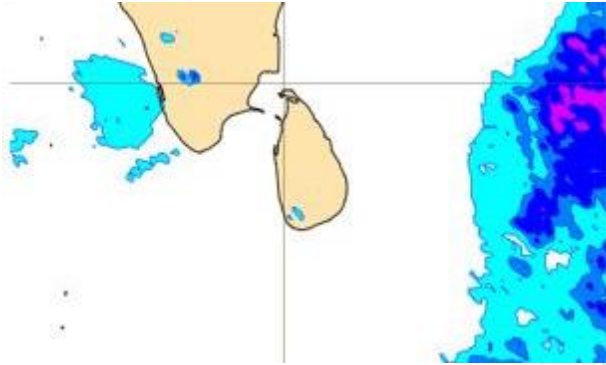
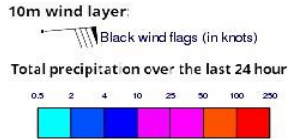
Wind Gust (m/s)



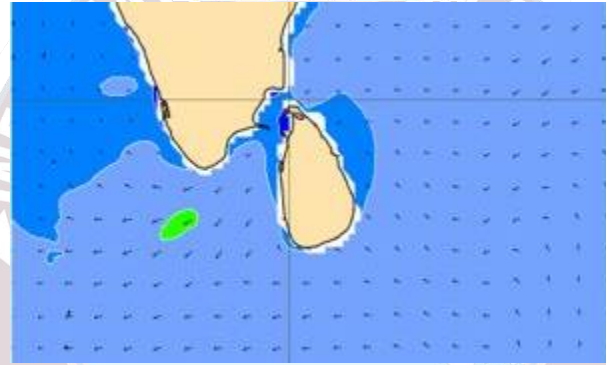
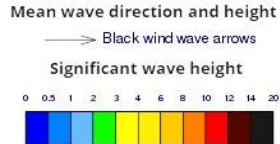
Mainly fair weather will prevail in the sea areas around the island.

Wind speed will be 20-30 kmph in the sea areas around the island and wind speed can be increased up to 40- 45 kmph at times and sea condition will be rough at times in the sea areas extending from Puttalam to Mannar and, also from Galle to Hambantota via Matara.

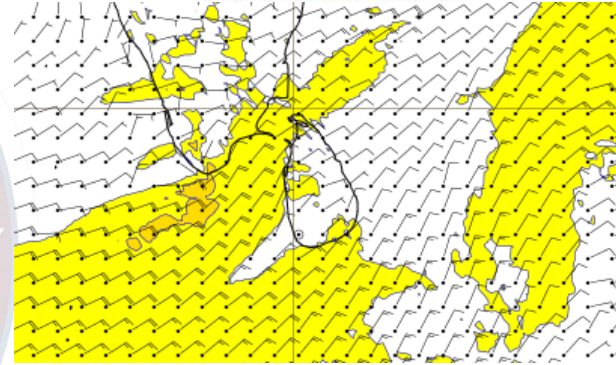
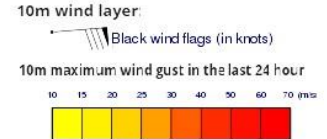
Wind and Rainfall Forecast (Total precipitation for 24 hrs)



Significant wave height (in meters)



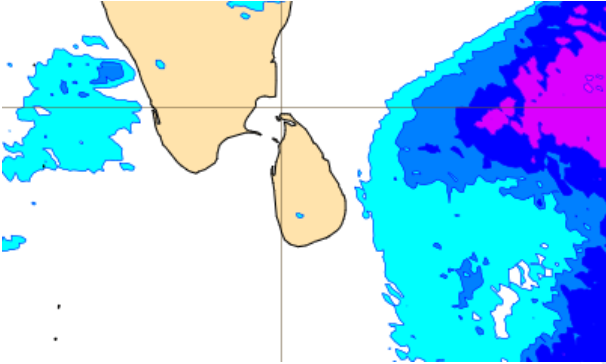
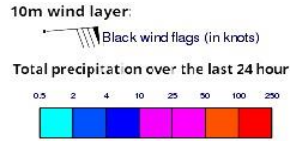
Wind Gust (m/s)



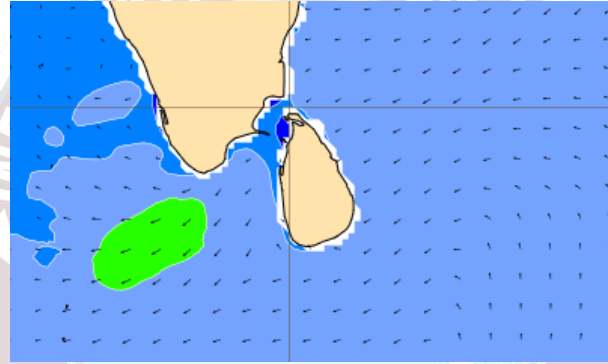
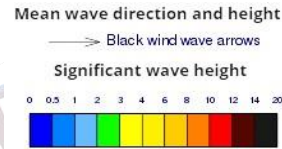
Mainly fair weather will prevail in the sea areas around the island.

Wind speed will be 20-30 kmph in the sea areas around the island and wind speed can be increased up to 40- 50 kmph at times and sea condition will be rough at times in the sea areas extending from Colombo to Mullaitivu via Mannar and Kankasanturai, also from Galle to Hambantota via Matara.

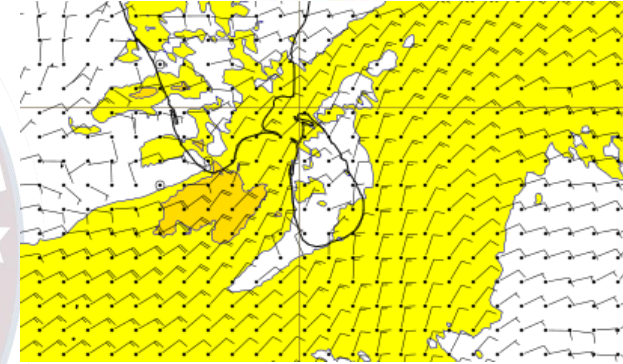
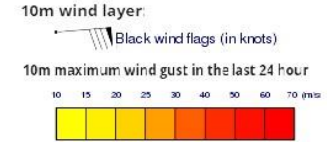
Wind and Rainfall Forecast (Total precipitation for 24 hrs)



Significant wave height (in meters)



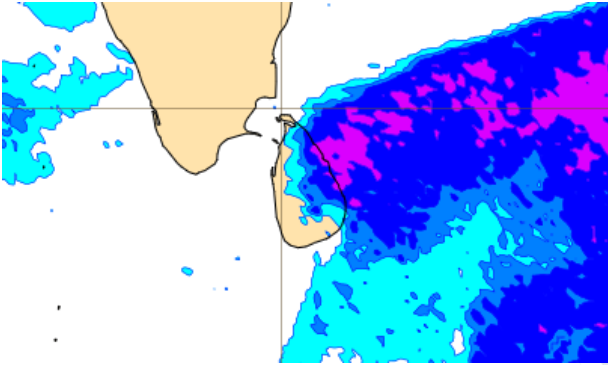
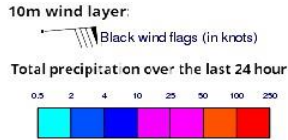
Wind Gust (m/s)



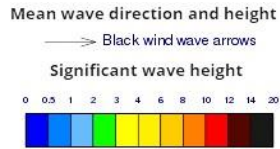
Mainly fair weather will prevail in the sea areas around the island.

Wind speed will be 20-30 kmph in the sea areas around the island and wind speed can be increased up to 40- 50 kmph at times and sea condition will be rough at times in the sea areas extending from Colombo to Mullaitivu via Mannar and Kankasanturai, also from Galle to Pottuvil via Matara and Hambantota.

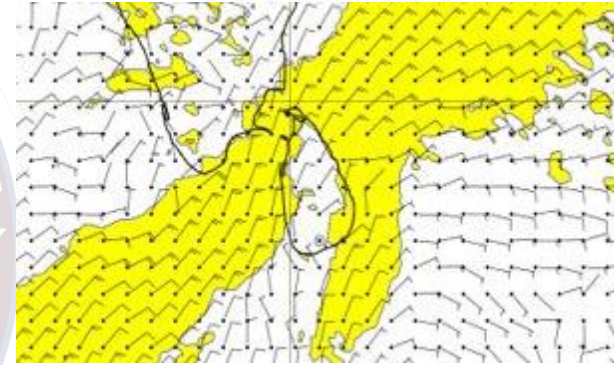
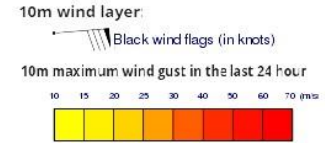
Wind and Rainfall Forecast (Total precipitation for 24 hrs)



Significant wave height (in meters)



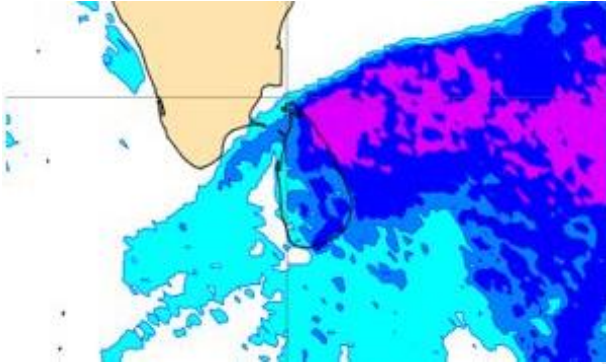
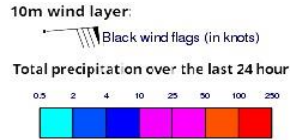
Wind Gust (m/s)



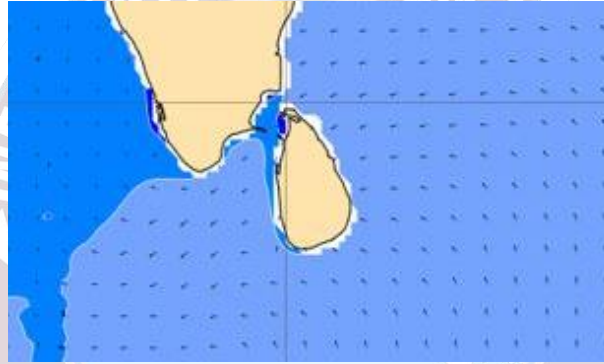
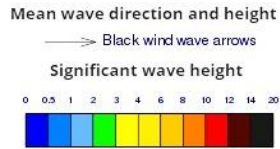
Showers or thundershowers will occur at several places in the seas areas off the coast extending from Mullaitivu to Hambantota via Trincomalee and Batticaloa.

Wind speed will be 20-30 kmph in the sea areas around the island and wind speed can be increased up to 40- 45 kmph at times and sea condition will be fairly rough at times in the sea areas extending from Colombo to Matara via Mannar, Kankasanturai, Trincomalee and Batticaloa.

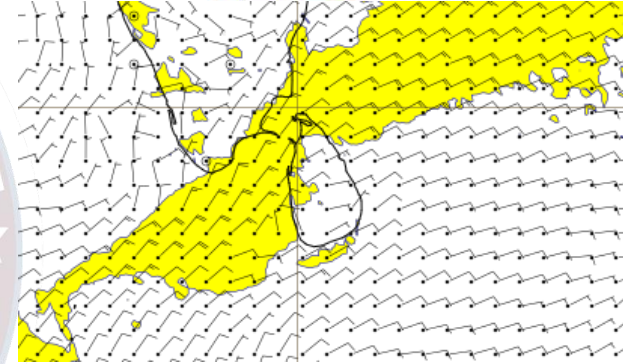
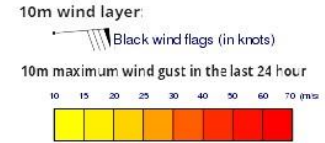
Wind and Rainfall Forecast (Total precipitation for 24 hrs)



Significant wave height (in meters)



Wind Gust (m/s)



Showers or thundershowers will occur at several places in the seas areas off the coast extending from Mullaitivu to Hambantota via Trincomalee and Batticaloa. Showers may occur at a few places in the other sea areas around the island.

Wind speed will be 20-30 kmph in the sea areas around the island and wind speed can be increased up to 40- 45 kmph at times and sea condition will be fairly rough at times in the sea areas extending from Galle to Trincomalee via Colombo, Mannar and Kankasanturai.



Thank you!