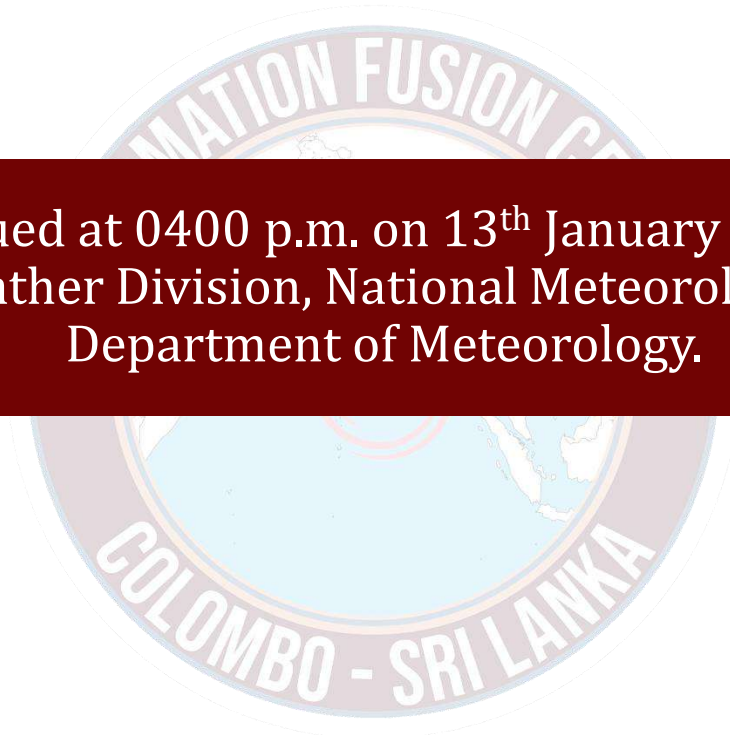




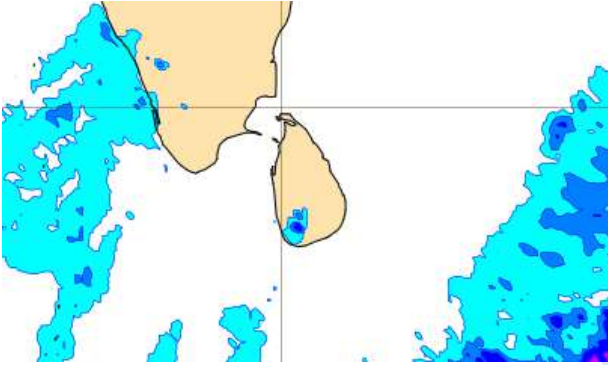
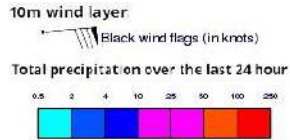
INFORMATION FUSION CENTRE COLOMBO

07 DAYS FORECAST FOR COASTAL AREAS AROUND SRI LANKA

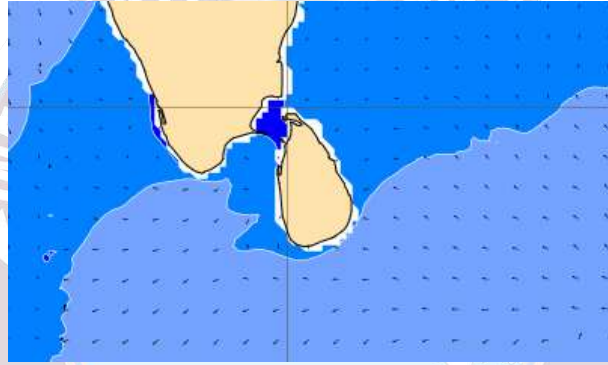
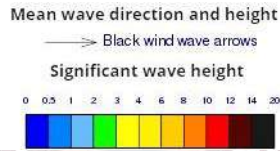


Issued at 0400 p.m. on 13th January 2024
Marine Weather Division, National Meteorological Centre
Department of Meteorology.

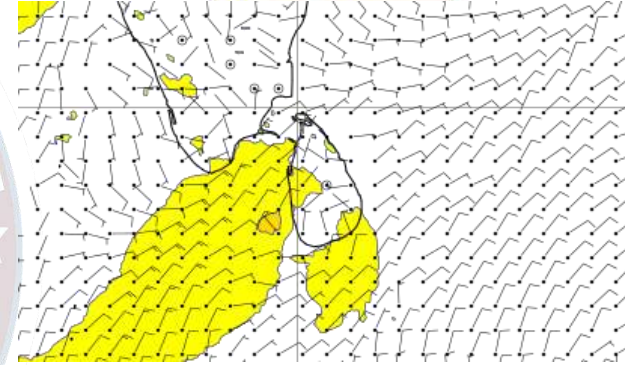
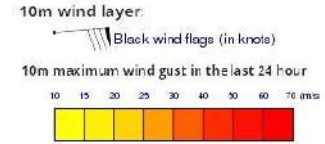
Wind and Rainfall Forecast (Total precipitation for 24 hrs)



Significant wave height (in meters)



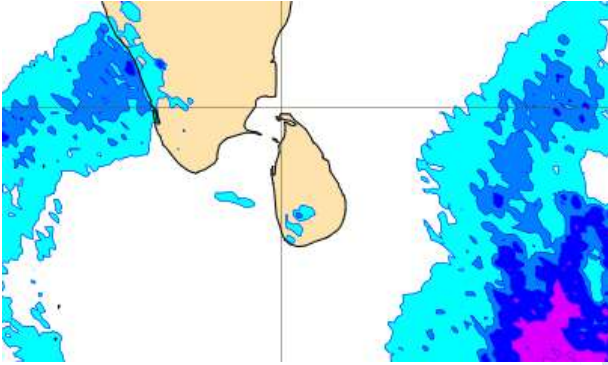
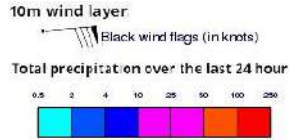
Wind Gust (m/s)



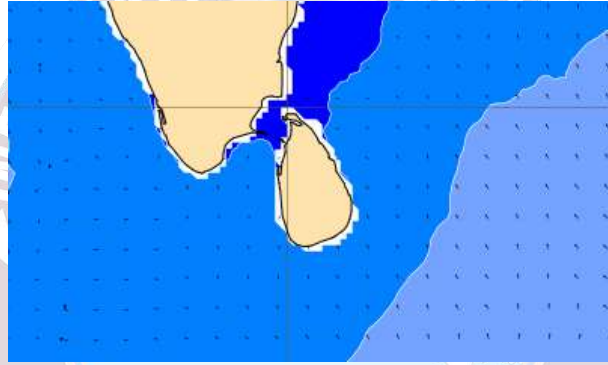
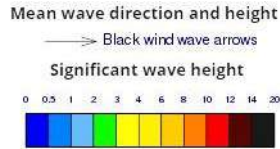
Mainly fair weather will prevail in the sea areas around the island.

Wind speed will be 25-35 kmph in the sea areas around the island and wind speed can be increased up to 40- 50 kmph at times and sea condition will be rough at times in the sea areas extending from Colombo to Mannar via Puttalam and, also from Matara to Hambantota.

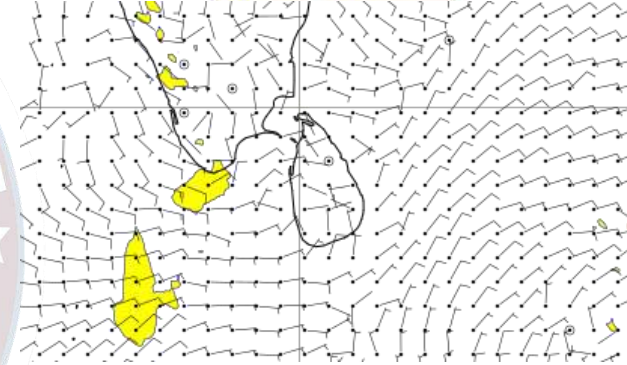
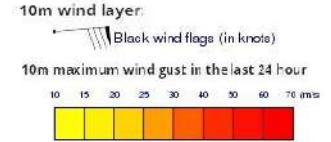
Wind and Rainfall Forecast (Total precipitation for 24 hrs)



Significant wave height (in meters)

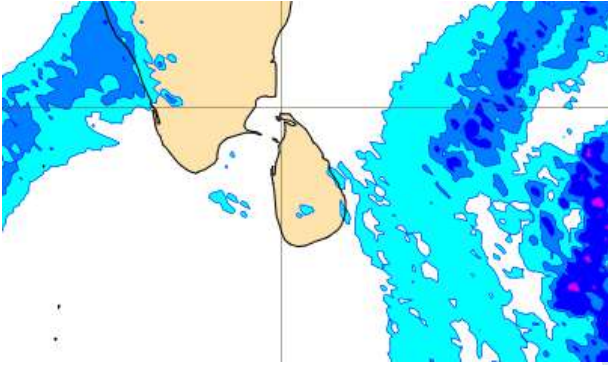
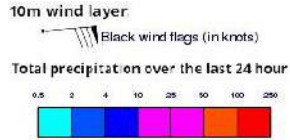


Wind Gust (m/s)

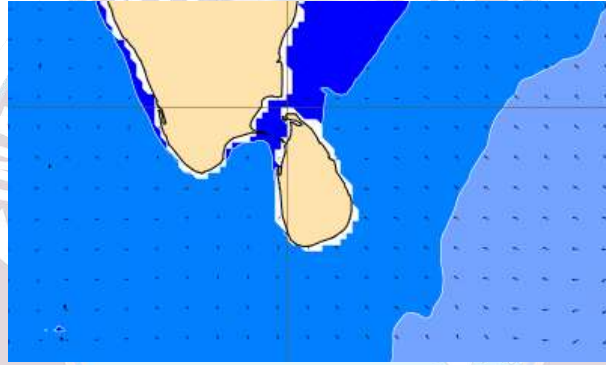
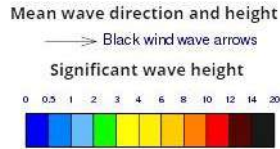


Mainly fair weather will prevail in the sea areas around the island.
Wind speed will be 20-30 kmph in the sea areas around the island.

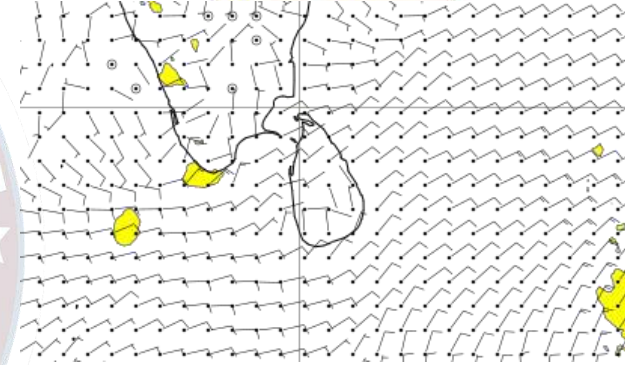
Wind and Rainfall Forecast (Total precipitation for 24 hrs)



Significant wave height (in meters)



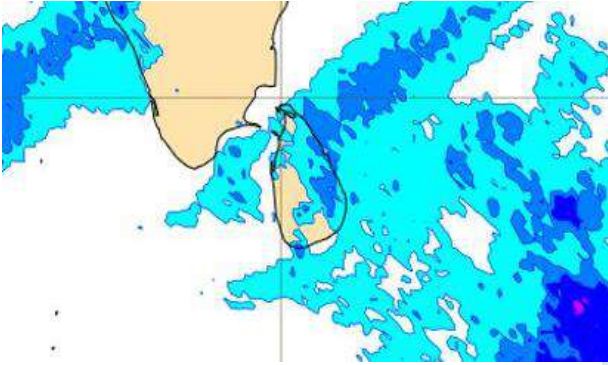
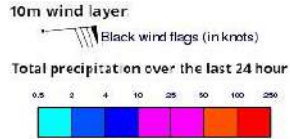
Wind Gust (m/s)



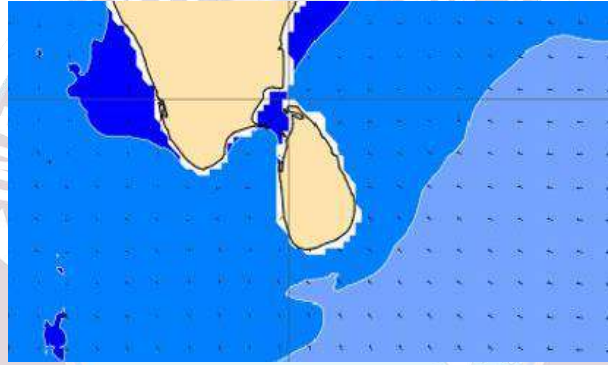
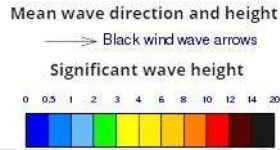
Mainly fair weather will prevail in the sea areas around the island.

Wind speed will be 20-30 kmph in the sea areas around the island.

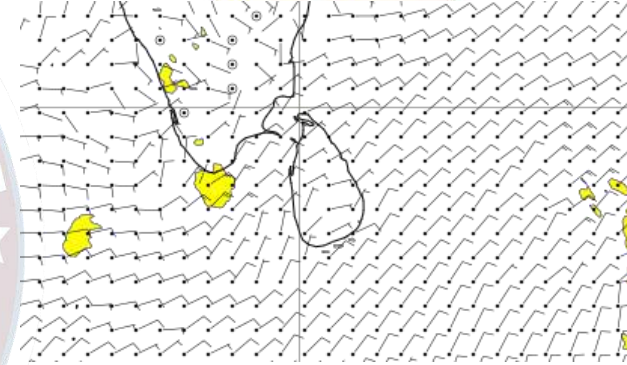
Wind and Rainfall Forecast (Total precipitation for 24 hrs)



Significant wave height (in meters)



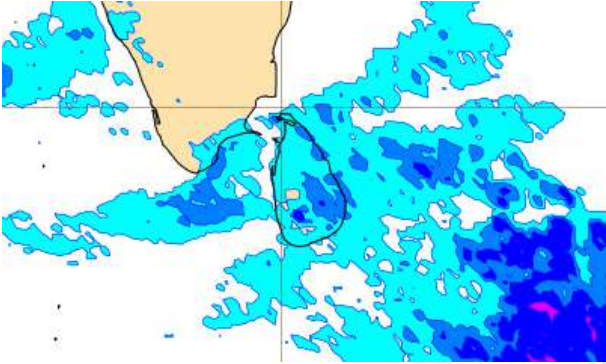
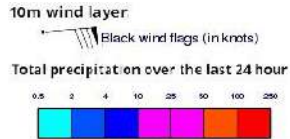
Wind Gust (m/s)



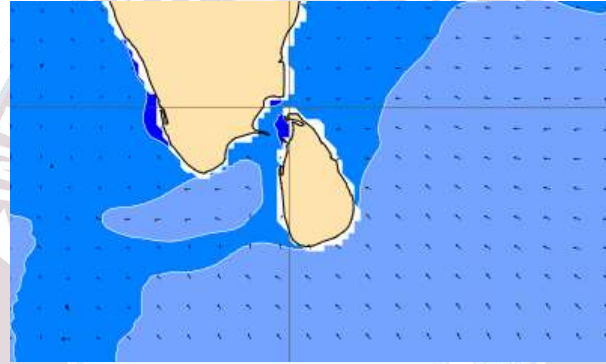
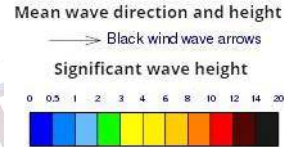
Showers or thundershowers will occur at a few places in the sea areas extending from Kankasanturai to Batticaloa via Trincomalee.

Wind speed will be 20-30 kmph in the sea areas around the island.

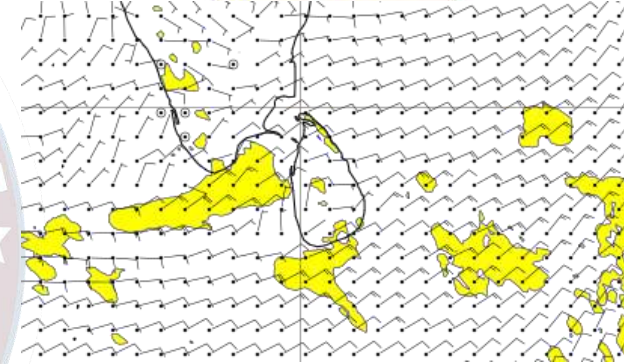
Wind and Rainfall Forecast (Total precipitation for 24 hrs)



Significant wave height (in meters)



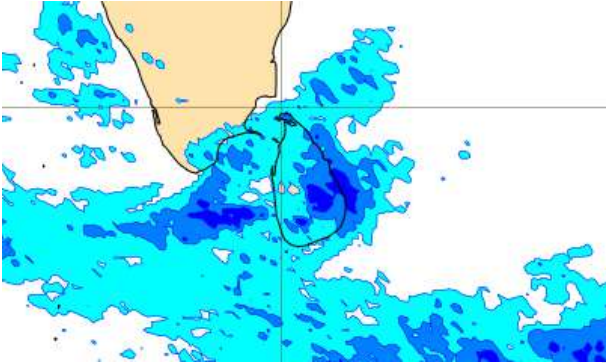
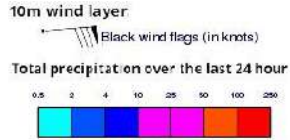
Wind Gust (m/s)



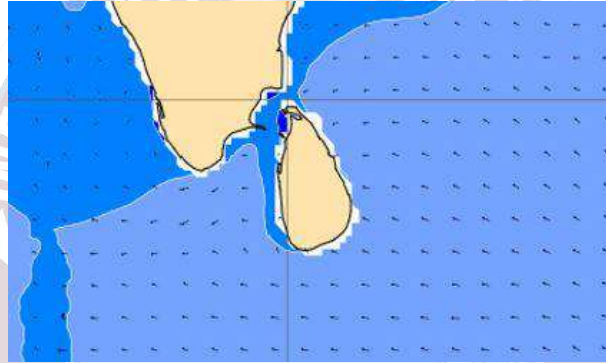
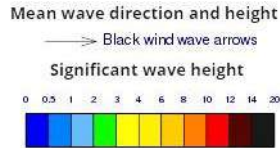
Showers or thundershowers will occur at a few places in the sea areas around the island.

Wind speed will be 20-30 kmph in the sea areas around the island and wind speed can be increased up to 40- 45 kmph at times and sea condition will be fairly rough at times in the sea areas extending from Chilaw to Puttalam and, also from Galle to Matara.

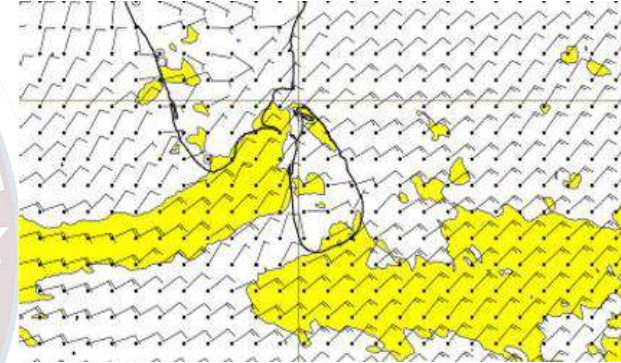
Wind and Rainfall Forecast (Total precipitation for 24 hrs)



Significant wave height (in meters)



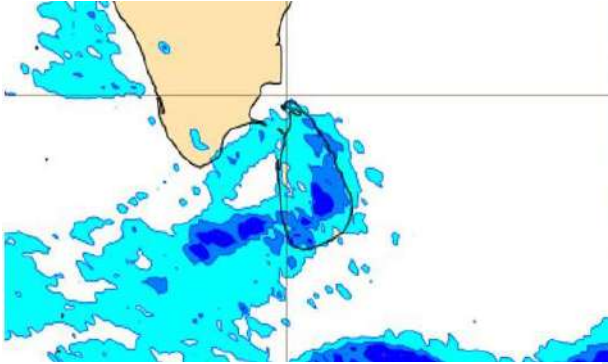
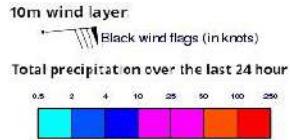
Wind Gust (m/s)



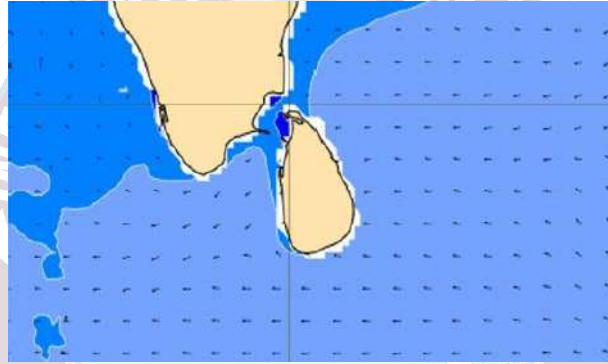
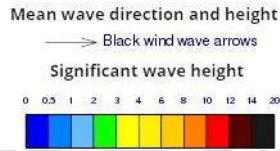
Showers or thundershowers will occur at a few places in the sea areas around the island.

Wind speed will be 20-30 kmph in the sea areas around the island and wind speed can be increased up to 40- 45 kmph at times and sea condition will be fairly rough at times in the sea areas extending from Colombo to Mannar and, also from Galle to Hambantota via Matara.

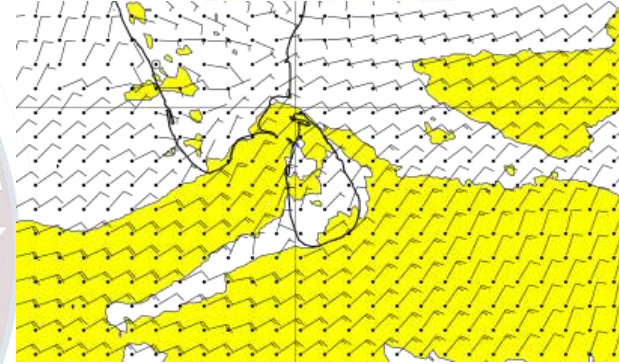
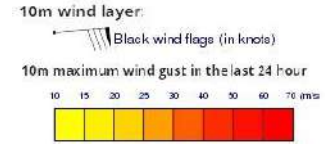
Wind and Rainfall Forecast (Total precipitation for 24 hrs)



Significant wave height (in meters)



Wind Gust (m/s)



Showers or thundershowers will occur at a few places in the sea areas extending from Colombo to Galle and from Trincomalee to Batticaloa.

Wind speed will be 20-30 kmph in the sea areas around the island and wind speed can be increased up to 40- 50 kmph at times and sea condition will be rough at times in the sea areas extending from Colombo to Kankasanturai via Mannar and, also from Galle to Hambantota via Matara.



Thank you!