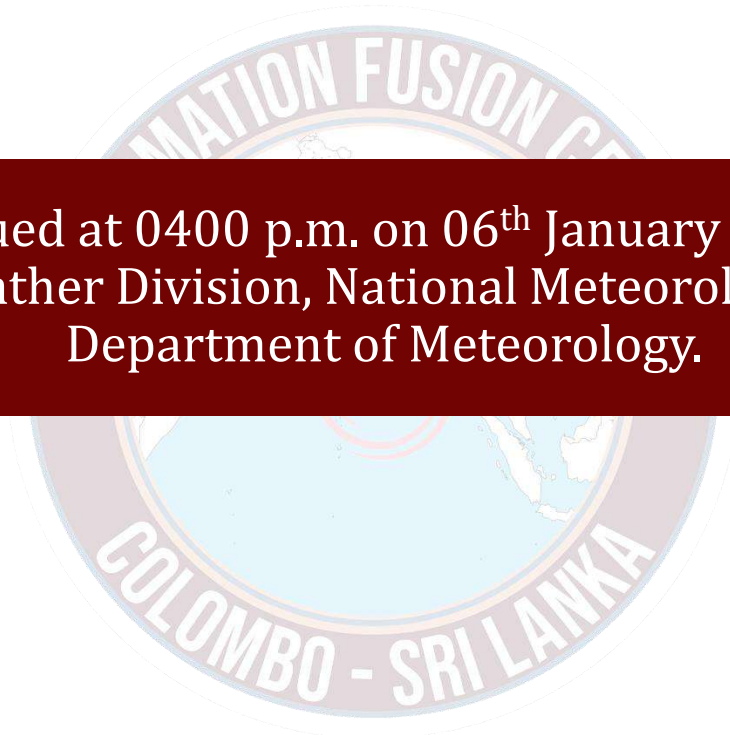




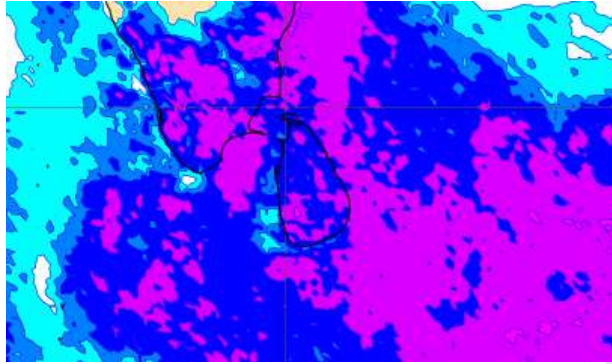
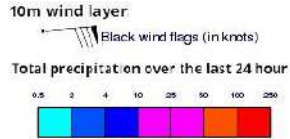
# **INFORMATION FUSION CENTRE COLOMBO**

**08 DAYS FORECAST FOR COASTAL AREAS AROUND SRI LANKA**

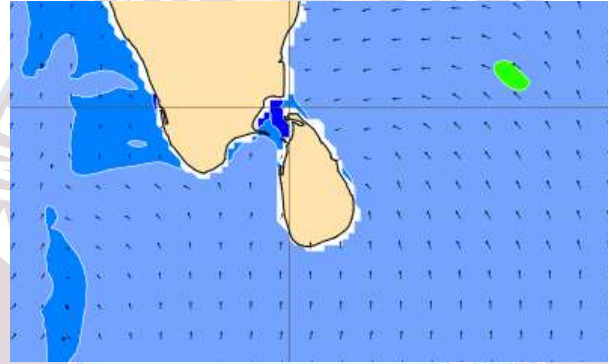
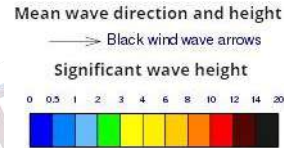


Issued at 0400 p.m. on 06<sup>th</sup> January 2024  
Marine Weather Division, National Meteorological Centre  
Department of Meteorology.

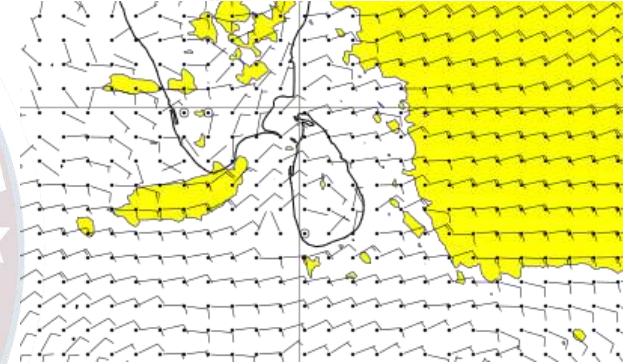
## Wind and Rainfall Forecast (Total precipitation for 24 hrs)



## Significant wave height (in meters)



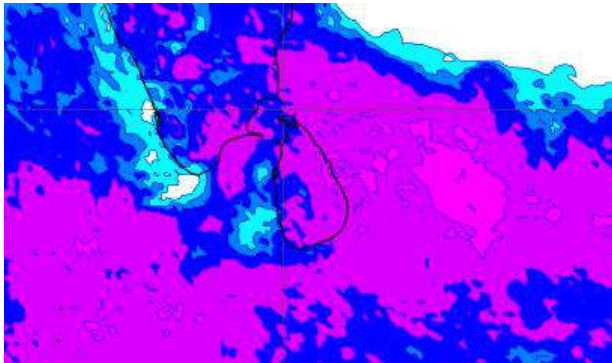
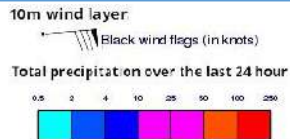
## Wind Gust (m/s)



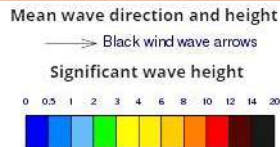
Showers or thundershowers will occur at several places in the sea around the island.

Wind speed will be 20-30 kmph in the sea areas around the island and wind speed can be increased up to 40 kmph at times and sea condition will be fairly rough at times in the sea areas extending from Galle to Hambantota via Matara.

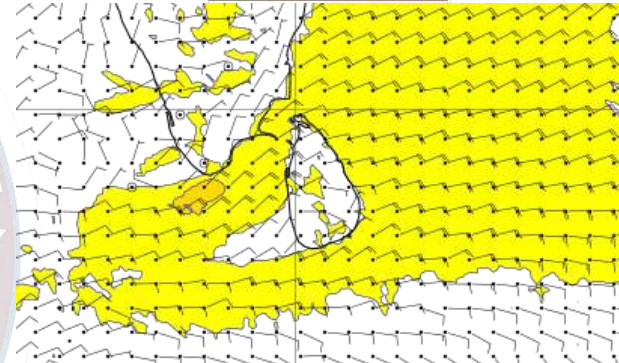
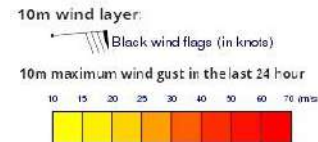
## Wind and Rainfall Forecast (Total precipitation for 24 hrs)



## Significant wave height (in meters)



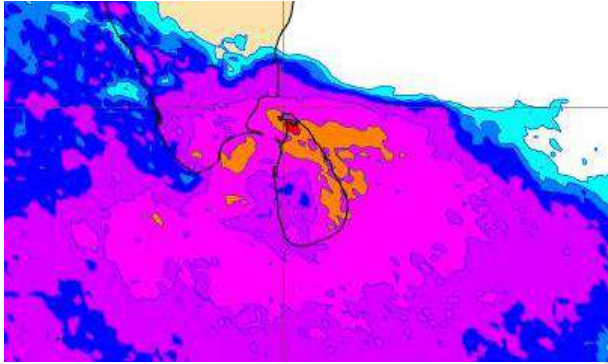
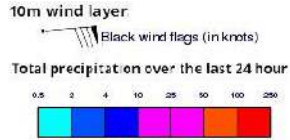
## Wind Gust (m/s)



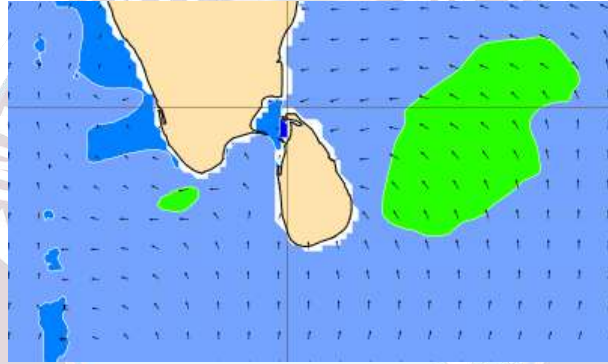
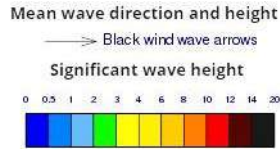
Showers or thundershowers will occur at several places in the sea areas extending from Hambantota to Mannar via Pottuvil, Batticaloa, Trincomalee and Kankasanturai. Showers or thundershowers will occur at a few places in the other sea areas around the island.

Wind speed will be 20-35 kmph in the sea areas around the island and wind speed can be increased up to 40- 50 kmph at times and sea condition will be rough at times.

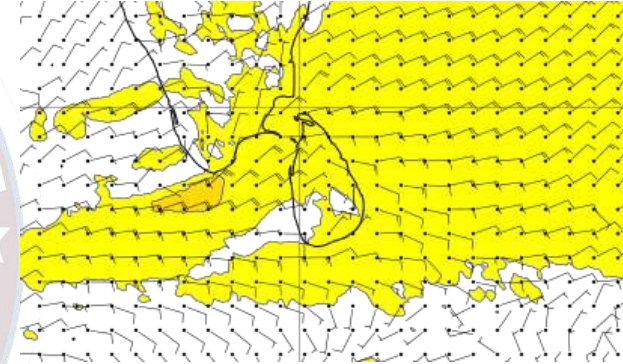
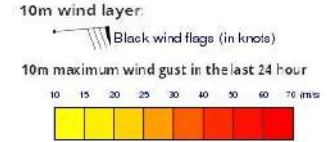
## Wind and Rainfall Forecast (Total precipitation for 24 hrs)



## Significant wave height (in meters)



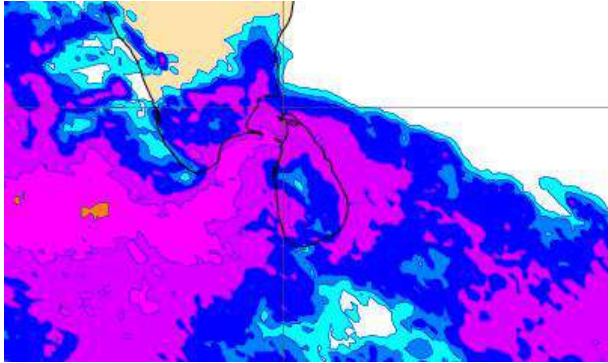
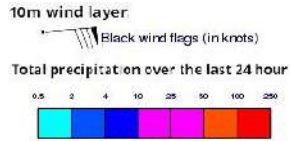
## Wind Gust (m/s)



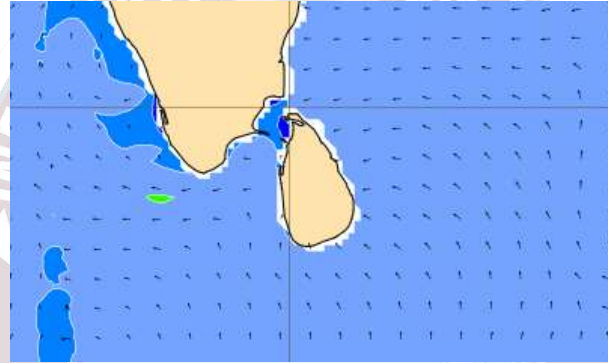
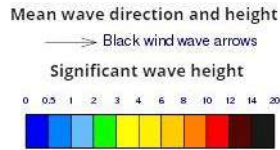
Showers or thundershowers will occur at several places in the sea around the island. Heavy showers are likely at some places.

Wind speed will be 25-35 kmph in the sea areas around the island and wind speed can be increased up to 40- 50 kmph at times and sea condition will be rough at times.

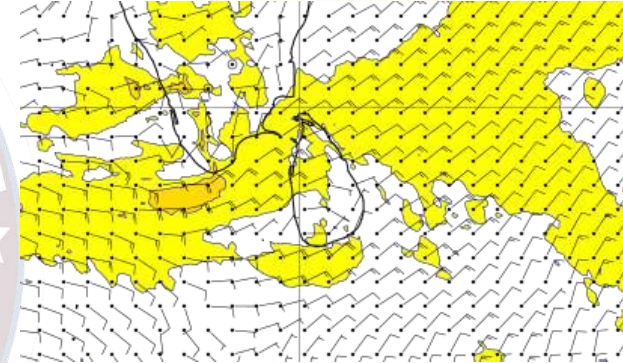
## Wind and Rainfall Forecast (Total precipitation for 24 hrs)



## Significant wave height (in meters)



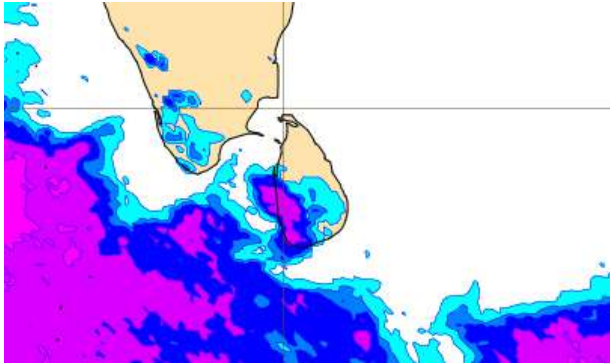
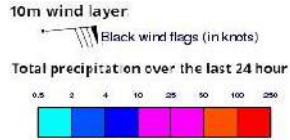
## Wind Gust (m/s)



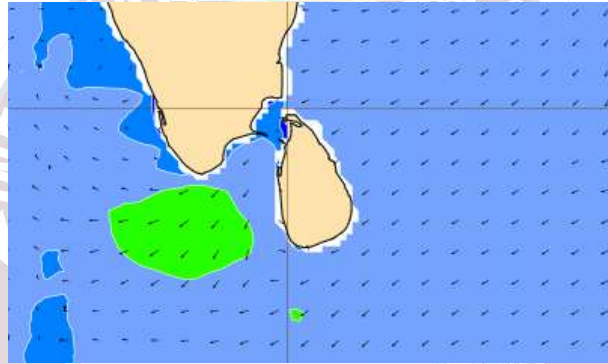
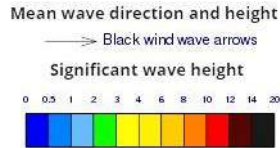
Showers or thundershowers will occur at several places in the sea around the island.

Wind speed will be 20-30 kmph in the sea areas around the island and wind speed can be increased up to 40- 45 kmph at times and sea condition will be fairly rough at times in the sea areas extending from Colombo to Kankasanturai via Mannar and, also from Galle to Hambantota via Matara.

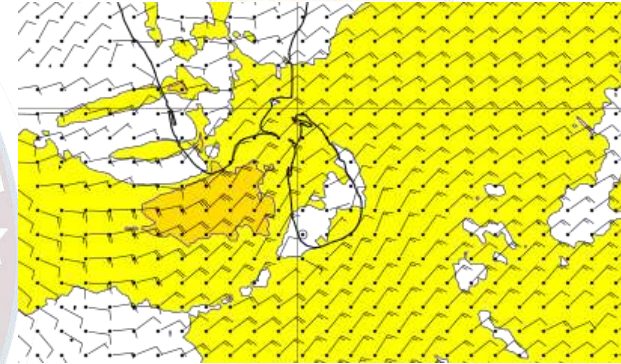
## Wind and Rainfall Forecast (Total precipitation for 24 hrs)



## Significant wave height (in meters)



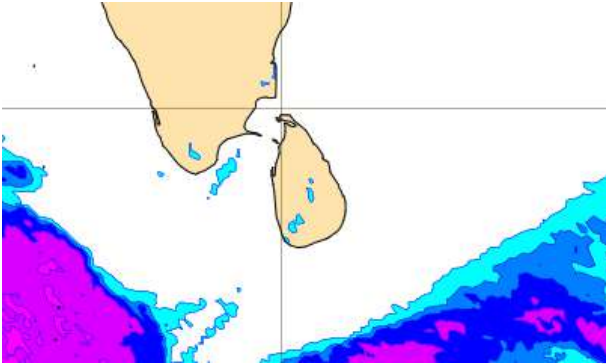
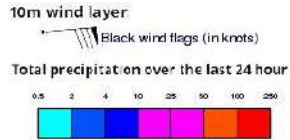
## Wind Gust (m/s)



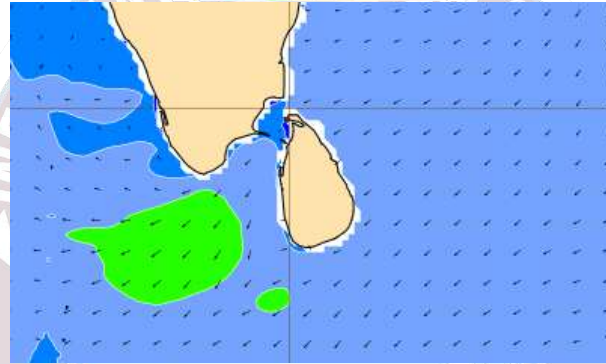
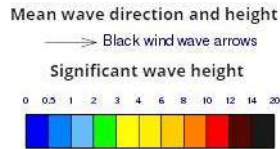
Showers or thundershowers will occur at several places in the sea areas extending from Puttalam to Galle via Colombo.

Wind speed will be 25-35 kmph in the sea areas around the island and wind speed can be increased up to 40- 50 kmph at times and sea condition will be rough at times.

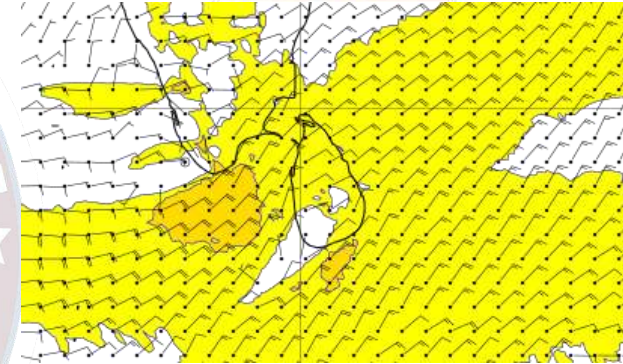
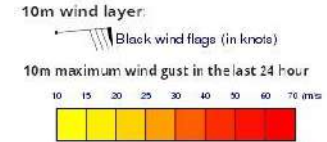
## Wind and Rainfall Forecast (Total precipitation for 24 hrs)



## Significant wave height (in meters)



## Wind Gust (m/s)

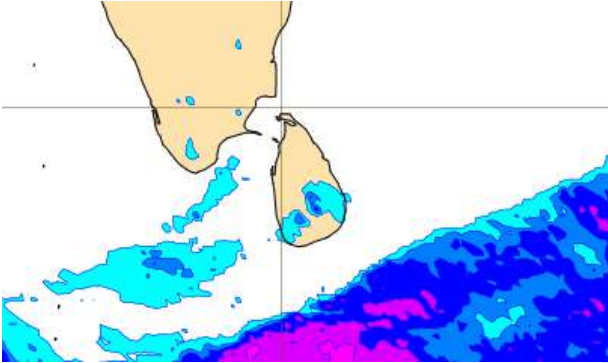
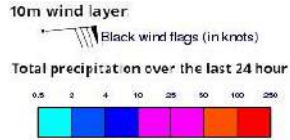


Fair weather will prevail in the sea areas around the island.

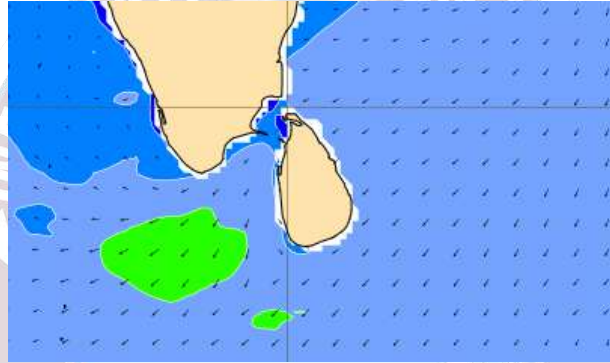
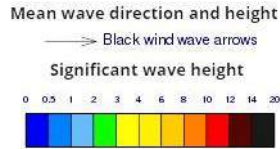
Wind speed will be 25-35 kmph in the sea areas around the island and wind speed can be increased up to 40- 50 kmph at times and sea condition will be rough at times.



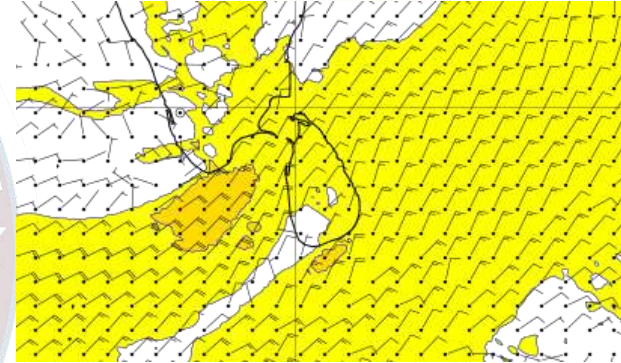
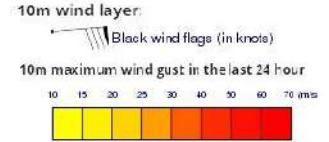
## Wind and Rainfall Forecast (Total precipitation for 24 hrs)



## Significant wave height (in meters)



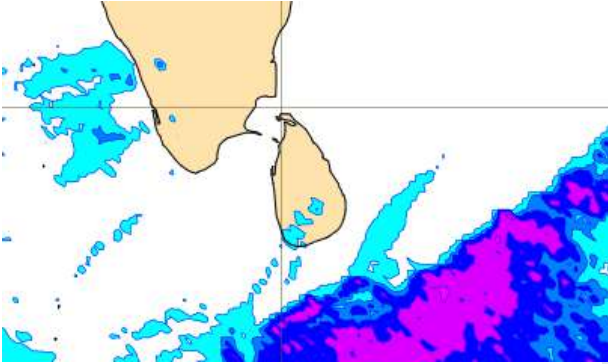
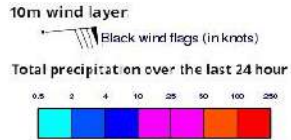
## Wind Gust (m/s)



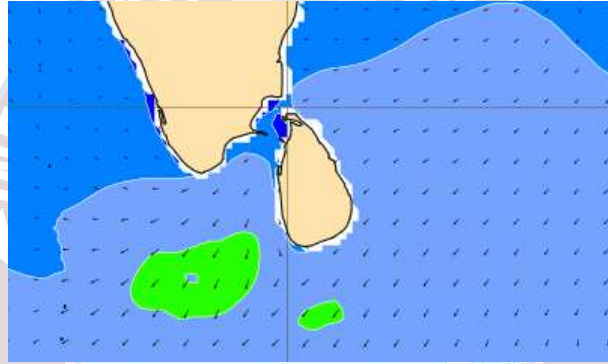
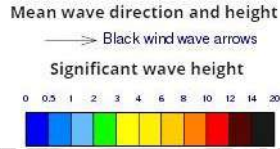
Fair weather will prevail in the sea areas around the island.

Wind speed will be 25-35 kmph in the sea areas around the island and wind speed can be increased up to 40- 50 kmph at times and sea condition will be rough at times.

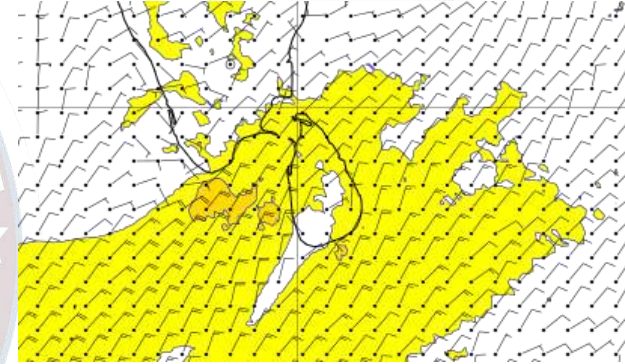
## Wind and Rainfall Forecast (Total precipitation for 24 hrs)



## Significant wave height (in meters)



## Wind Gust (m/s)



Mainly fair weather will prevail in the sea areas around the island.

Wind speed will be 25-35 kmph in the sea areas around the island and wind speed can be increased up to 40- 50 kmph at times and sea condition will be rough at times.



Thank you!