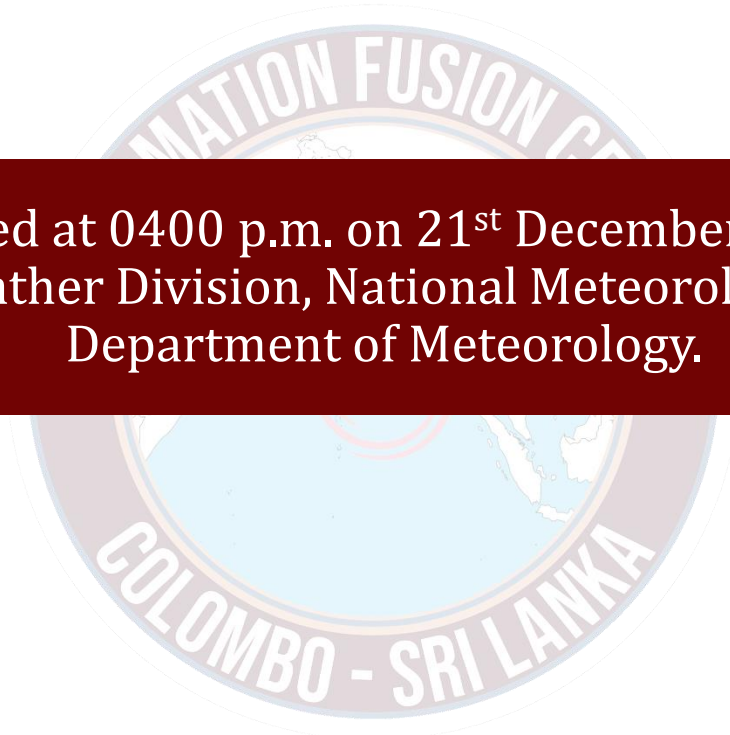




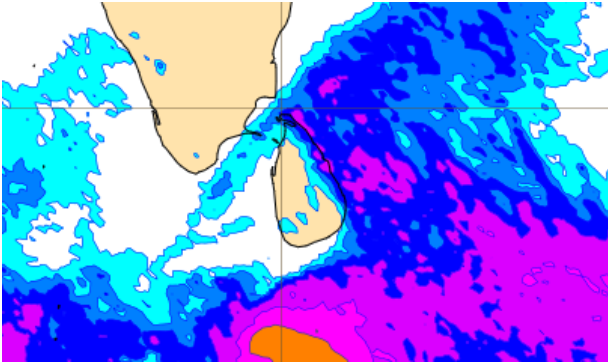
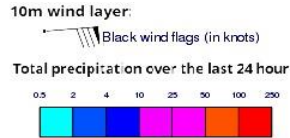
INFORMATION FUSION CENTRE COLOMBO

07 DAYS FORECAST FOR COASTAL AREAS AROUND SRI LANKA

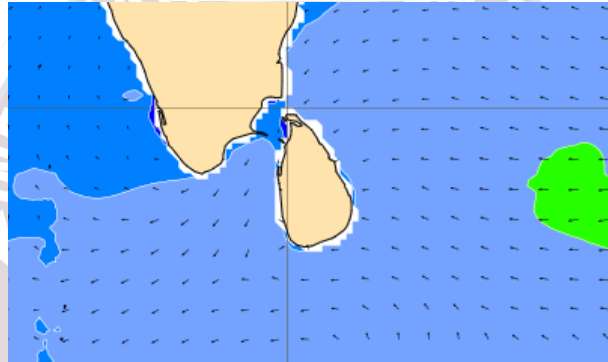
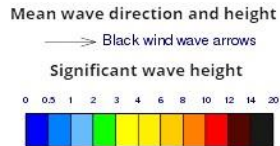


Issued at 0400 p.m. on 21st December 2023
Marine Weather Division, National Meteorological Centre
Department of Meteorology.

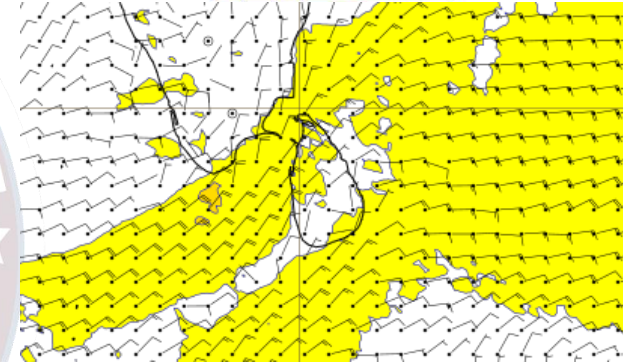
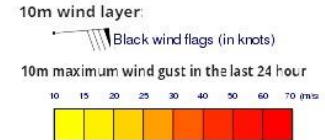
Wind and Rainfall Forecast (Total precipitation for 24 hrs)



Significant wave height (in meters)



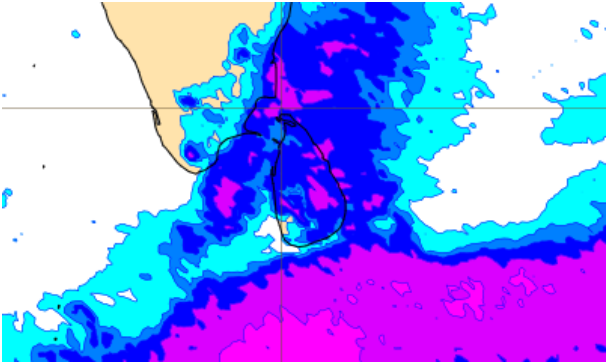
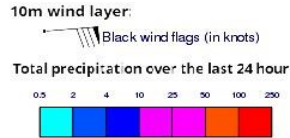
Wind Gust (m/s)



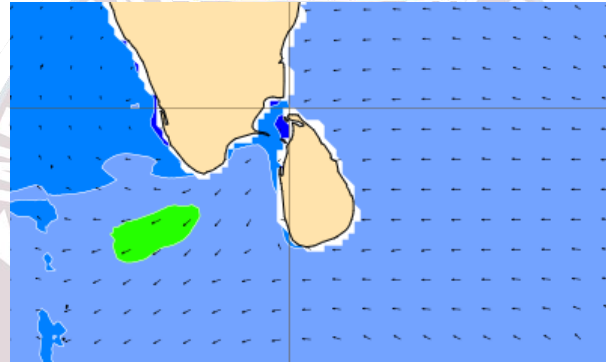
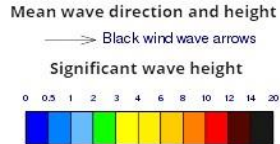
Showers or thundershowers will occur at a few places in the sea areas extending from Hambantota to Kankasanturai via Pottuvil, Batticaloa, Trincomalee.

Wind speed will be 20-30 kmph in the sea areas around the island and wind speed can be increased up to 40- 50 kmph at times and sea condition will be rough at times.

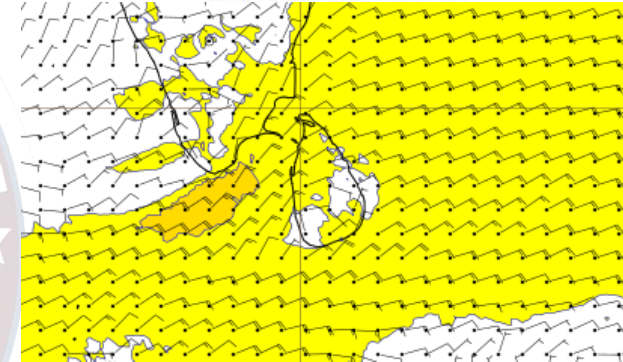
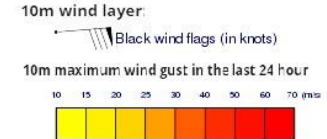
Wind and Rainfall Forecast (Total precipitation for 24 hrs)



Significant wave height (in meters)



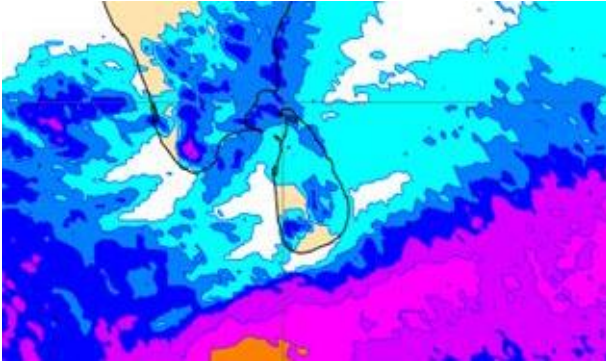
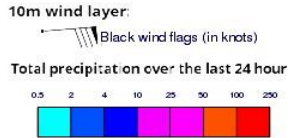
Wind Gust (m/s)



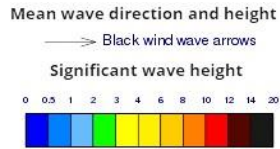
Showers or thundershowers will occur at several places in the sea around the island.

Wind speed will be 20-30 kmph in the sea areas around the island and wind speed can be increased up to 40- 50 kmph at times and sea condition will be rough at times.

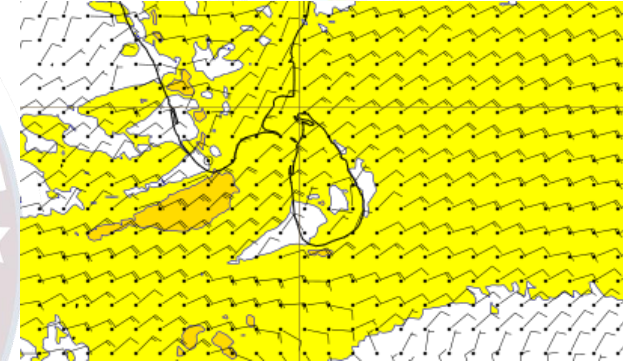
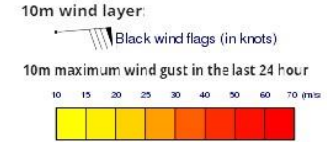
Wind and Rainfall Forecast (Total precipitation for 24 hrs)



Significant wave height (in meters)



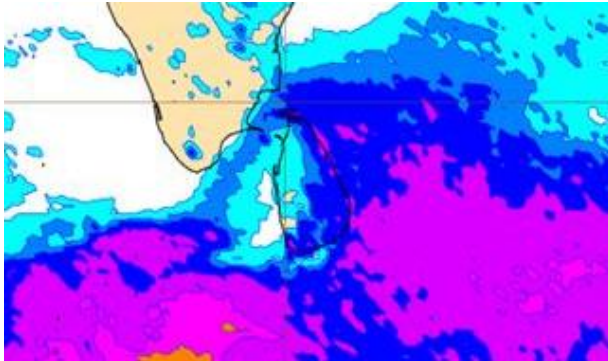
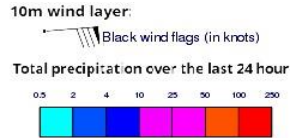
Wind Gust (m/s)



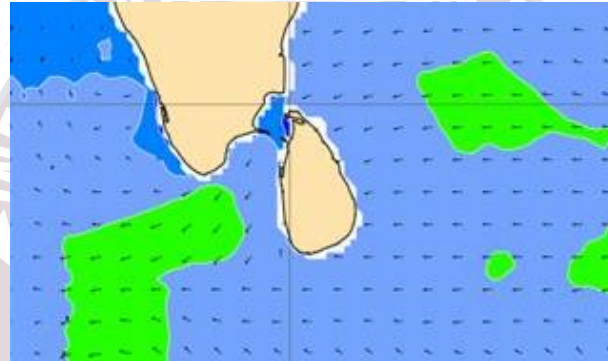
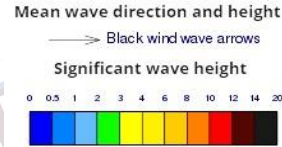
Showers or thundershowers will occur at a few places in the sea areas extending from Galle to Mannar via Hambantota, Pottuvil, Batticaloa, Trincomalee and Kankasanturai.

Wind speed will be 25-35 kmph in the sea areas around the island and wind speed can be increased up to 50- 60 kmph at times and sea condition will be rough at times.

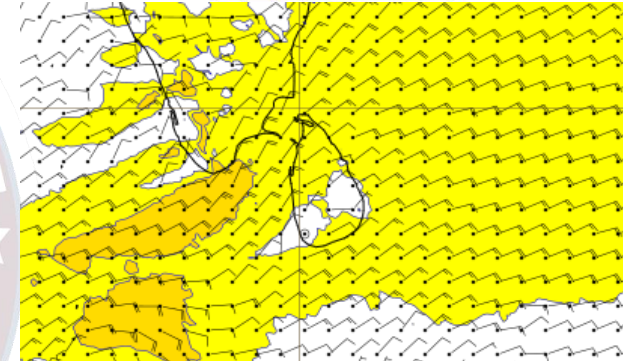
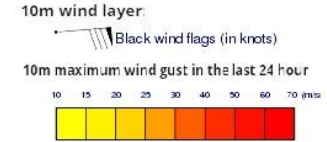
Wind and Rainfall Forecast (Total precipitation for 24 hrs)



Significant wave height (in meters)



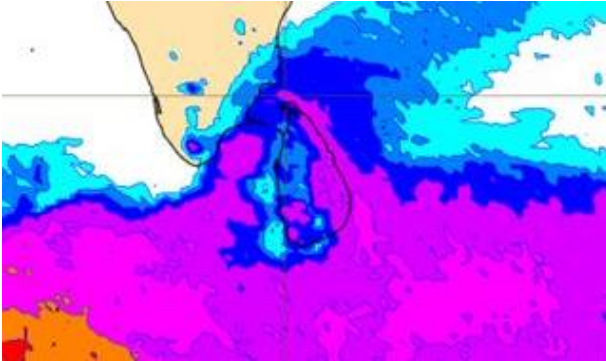
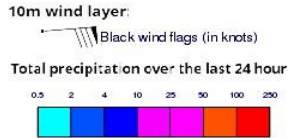
Wind Gust (m/s)



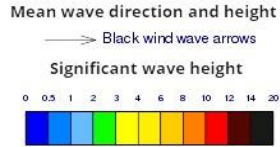
Showers or thundershowers will occur at a several places in the sea areas extending from Galle to Mannar via Hambantota, Pottuvil, Batticaloa, Trincomalee and Kankasanturai.

Wind speed will be 20-30 kmph in the sea areas around the island and wind speed can be increased up to 50- 60 kmph at times and sea condition will be rough at times.

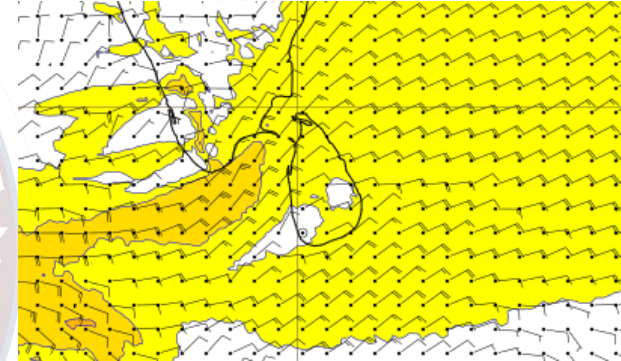
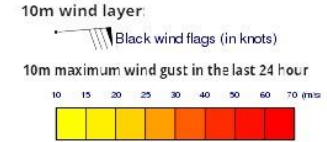
Wind and Rainfall Forecast (Total precipitation for 24 hrs)



Significant wave height (in meters)



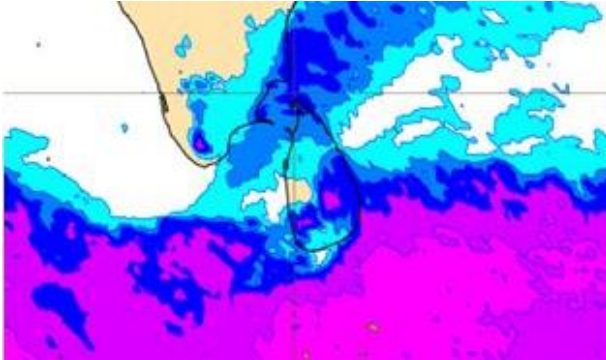
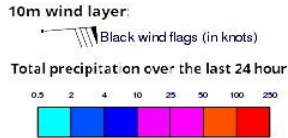
Wind Gust (m/s)



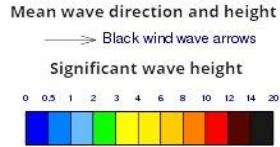
Showers or thundershowers will occur at several places in the sea around the island.

Wind speed will be 25-35 kmph in the sea areas around the island and wind speed can be increased up to 50- 60 kmph at times and sea condition will be rough at times.

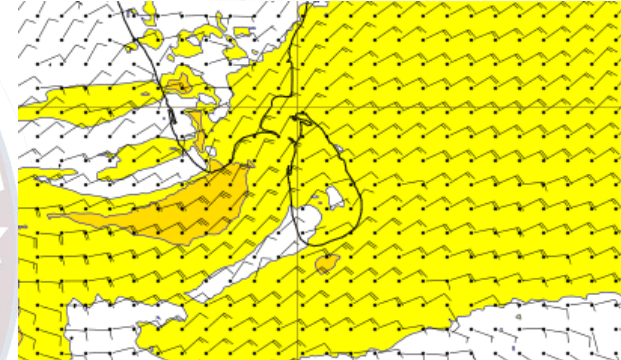
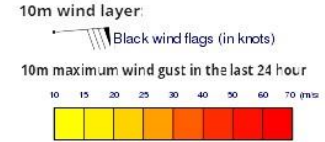
Wind and Rainfall Forecast (Total precipitation for 24 hrs)



Significant wave height (in meters)



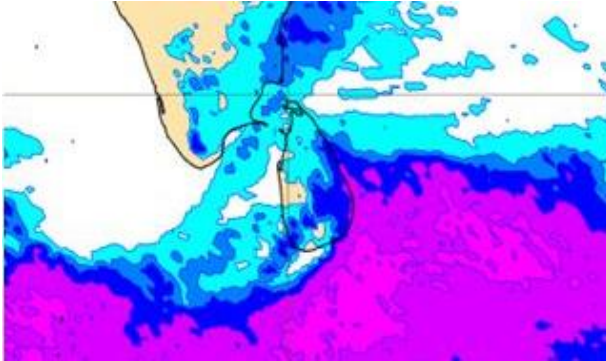
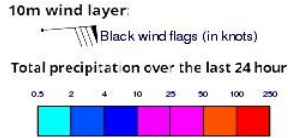
Wind Gust (m/s)



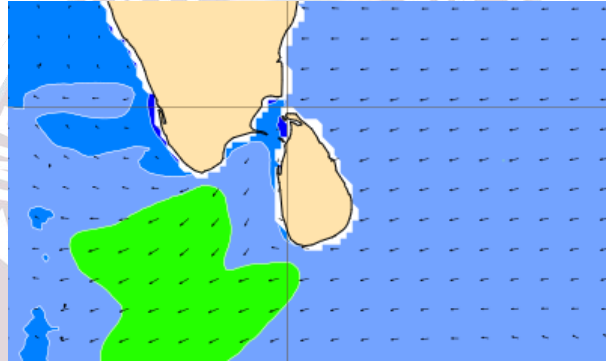
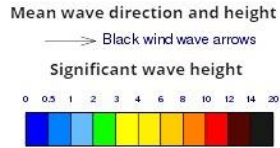
Showers or thundershowers will occur at several places in the sea areas extending from Galle to Mannar via Hambantota, Pottuvil, Batticaloa, Trincomalee and Kankasanturai.

Wind speed will be 25-35 kmph in the sea areas around the island and wind speed can be increased up to 50- 60 kmph at times and sea condition will be rough at times.

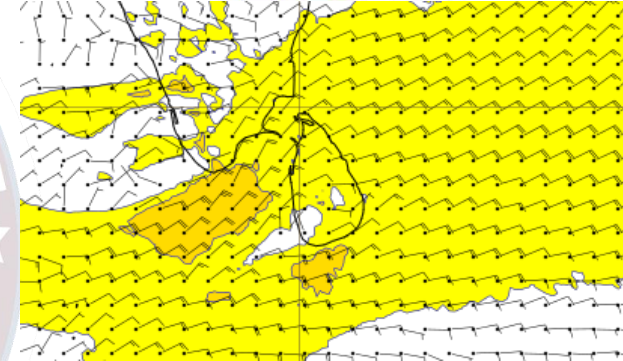
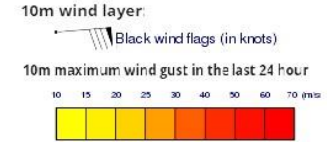
Wind and Rainfall Forecast (Total precipitation for 24 hrs)



Significant wave height (in meters)



Wind Gust (m/s)



Showers or thundershowers will occur at several places in the sea areas extending from Galle to Trincomalee via Hambantota, Pottuvil, and Batticaloa.

Wind speed will be 20-30 kmph in the sea areas around the island and wind speed can be increased up to 50- 60 kmph at times and sea condition will be rough at times.



Thank you!