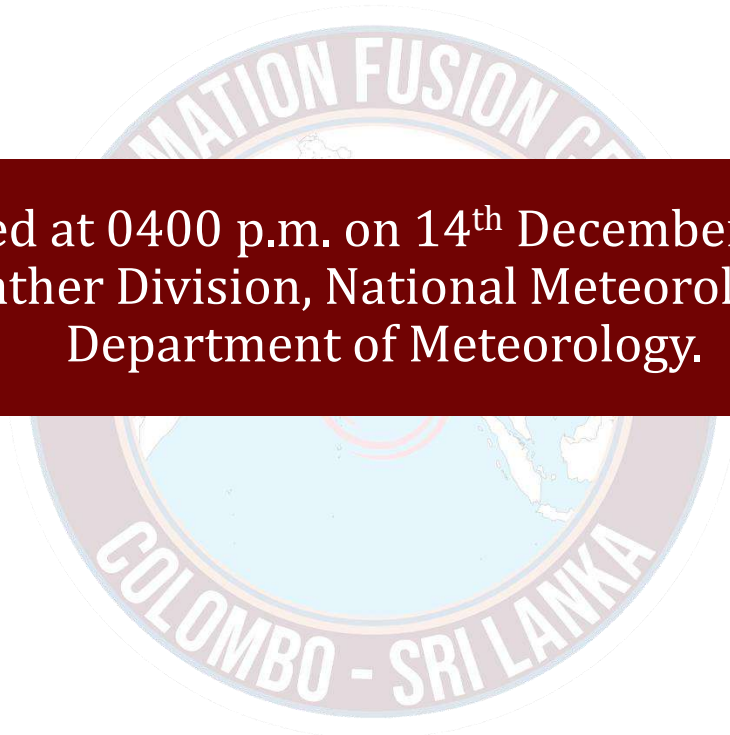




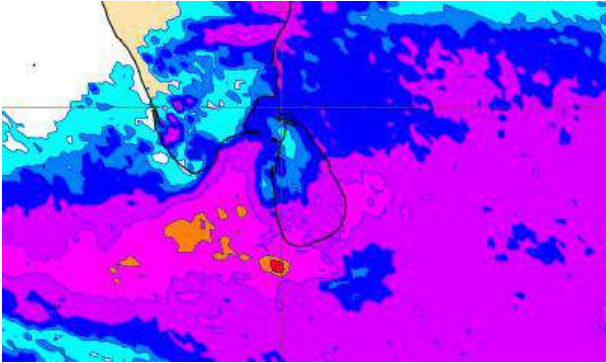
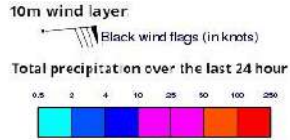
INFORMATION FUSION CENTRE COLOMBO

08 DAYS FORECAST FOR COASTAL AREAS AROUND SRI LANKA

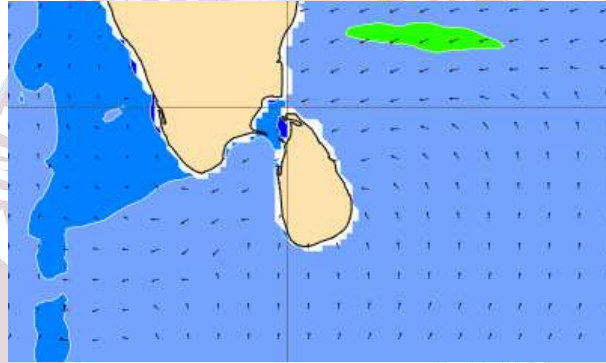
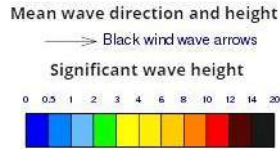


Issued at 0400 p.m. on 14th December 2023
Marine Weather Division, National Meteorological Centre
Department of Meteorology.

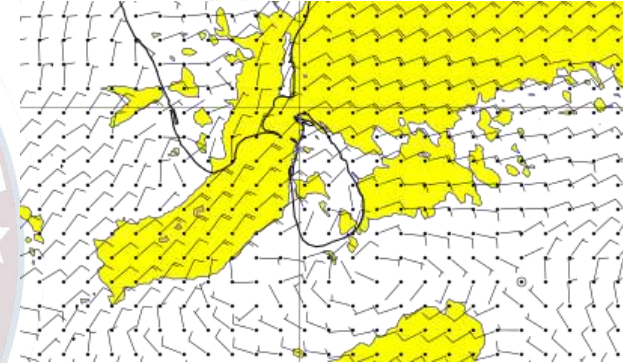
Wind and Rainfall Forecast (Total precipitation for 24 hrs)



Significant wave height (in meters)



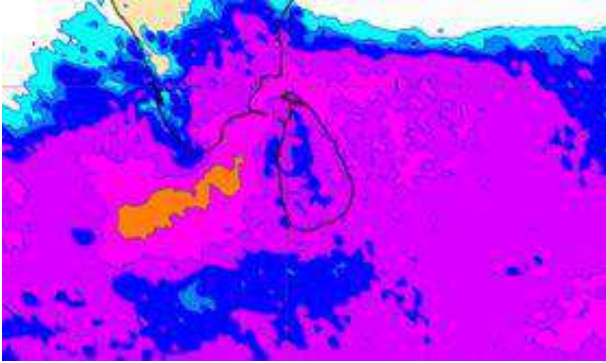
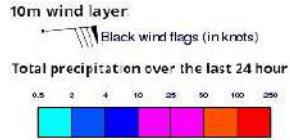
Wind Gust (m/s)



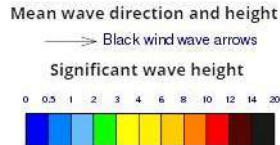
Showers or thundershowers will occur at times in the sea areas around the island. Heavy showers are likely at some places in the sea areas extending from Colombo to Batticaloa via Galle, Matara and Hambantota.

Wind speed will be 20-30 kmph in the sea areas around the island. Wind speed can be increased up to 40-50 kmph at times and sea condition will be rough at times in the sea areas off the coast extending from Colombo to Hambantota via Puttalam, Mannar and Kankasanthurai, Trincomalee and Batticaloa.

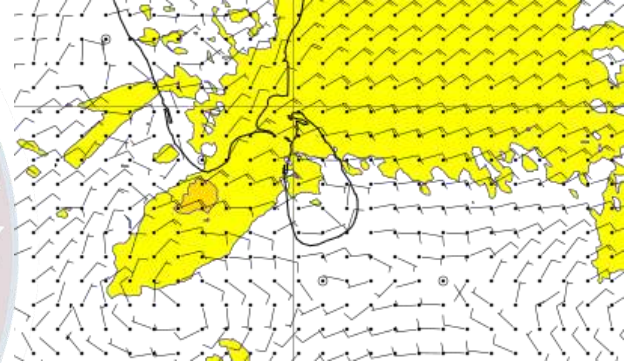
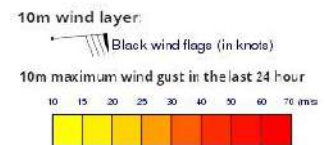
Wind and Rainfall Forecast (Total precipitation for 24 hrs)



Significant wave height (in meters)



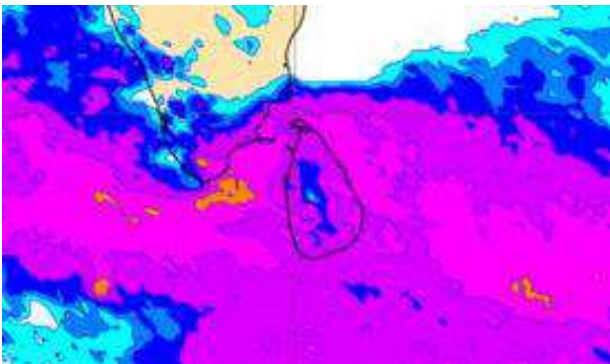
Wind Gust (m/s)



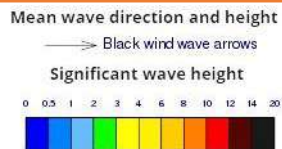
Showers or thundershowers will occur at times in the sea areas around the island.

Wind speed will be 20-30 kmph in the sea areas around the island. Wind speed can be increased up to 40-50 kmph at times and sea condition will be rough at times in the sea areas off the coast extending from Colombo to Batticaloa via Puttalam, Mannar, Kankasanthurai, and Trincomalee.

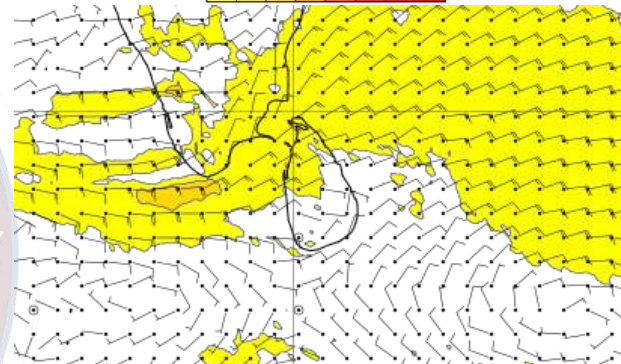
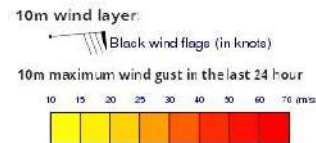
Wind and Rainfall Forecast (Total precipitation for 24 hrs)



Significant wave height (in meters)



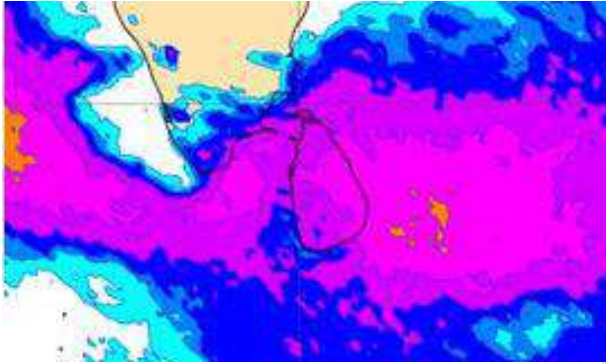
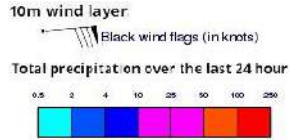
Wind Gust (m/s)



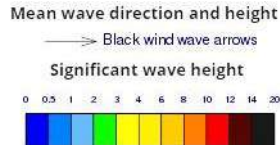
Showers or thundershowers will occur at times in the sea areas around the island.

Wind speed will be 20-30 kmph in the sea areas around the island. Wind speed can be increased up to 40-50 kmph at times and sea condition will be rough at times in the sea areas off the coast extending from Colombo to Trincomalee via Puttalam, Mannar and Kankasanthurai.

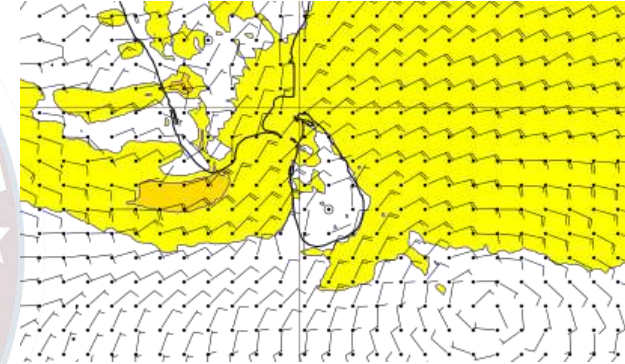
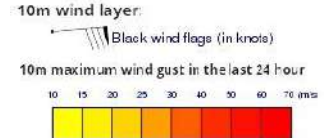
Wind and Rainfall Forecast (Total precipitation for 24 hrs)



Significant wave height (in meters)



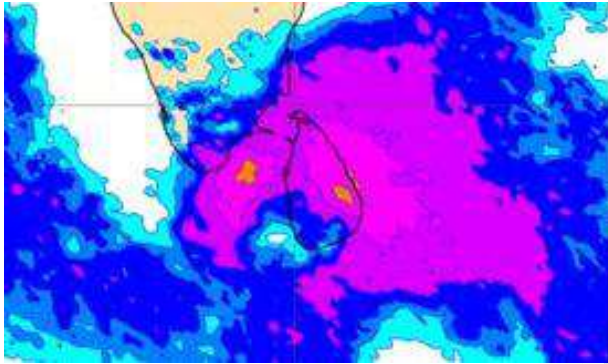
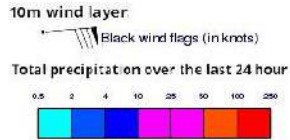
Wind Gust (m/s)



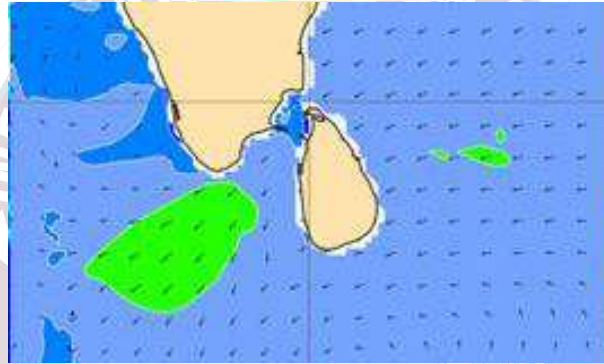
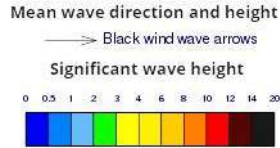
Showers or thundershowers will occur at times in the sea areas around the island. Heavy showers are likely at some places in the sea areas extending from Trincomalee to Hambantota via Batticaloa

Wind speed will be 20-30 kmph in the sea areas around the island. Wind speed can be increased up to 50-60 kmph at times and sea condition will be rough at times in the sea areas off the coast extending from Colombo to Galle via Puttalam, Mannar, Kankasanthurai, Trincomalee, Batticaloa and Hambantota.

Wind and Rainfall Forecast (Total precipitation for 24 hrs)



Significant wave height (in meters)



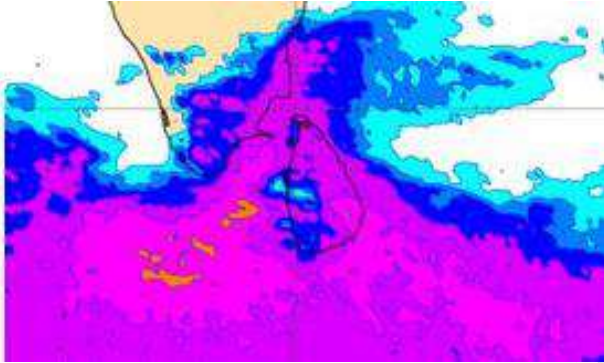
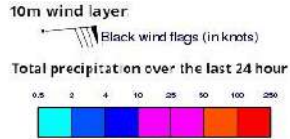
Wind Gust (m/s)



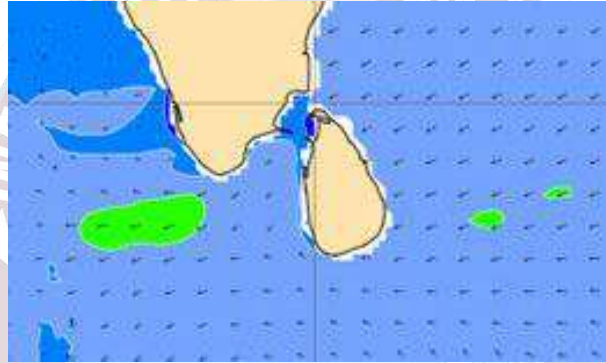
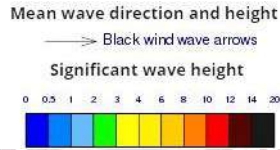
Showers or thundershowers will occur at times in the sea areas around the island. Heavy showers are likely at some places in the sea areas extending from Kankasanturai to Hambantota via Trincomalee and Batticaloa.

Wind speed will be 20-30 kmph in the sea areas around the island and wind speed can be increased up to 50- 60 kmph at times and sea condition will be rough at times.

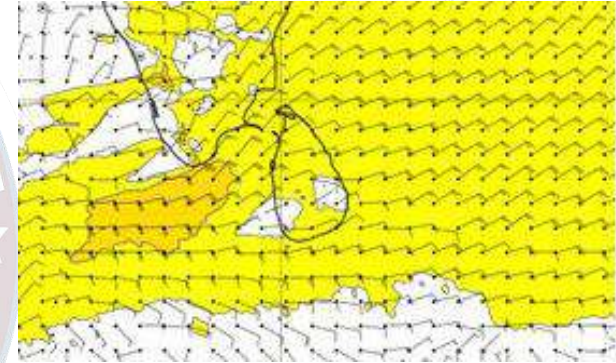
Wind and Rainfall Forecast (Total precipitation for 24 hrs)



Significant wave height (in meters)



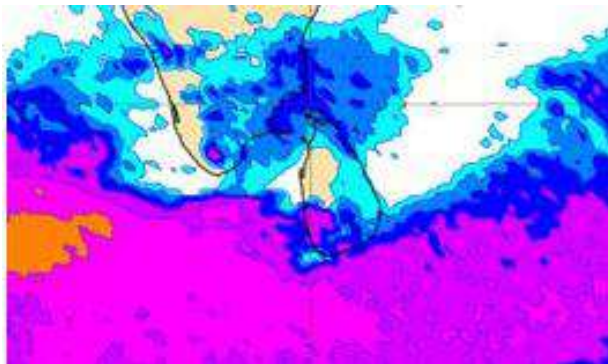
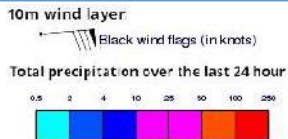
Wind Gust (m/s)



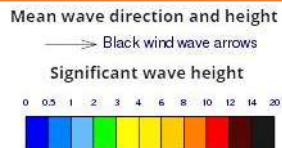
Showers or thundershowers will occur at times in the sea areas around the island.

Wind speed will be 20-30 kmph in the sea areas around the island and wind speed can be increased up to 50- 60 kmph at times and sea condition will be rough at times.

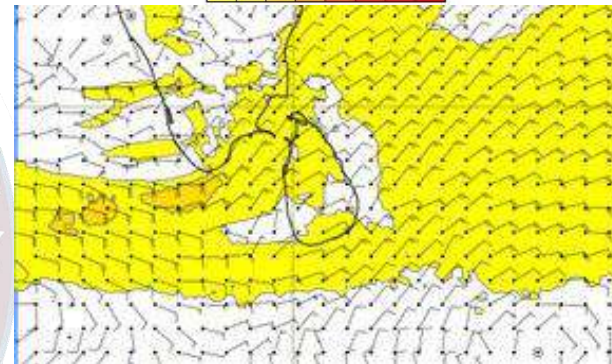
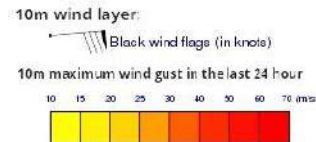
Wind and Rainfall Forecast (Total precipitation for 24 hrs)



Significant wave height (in meters)



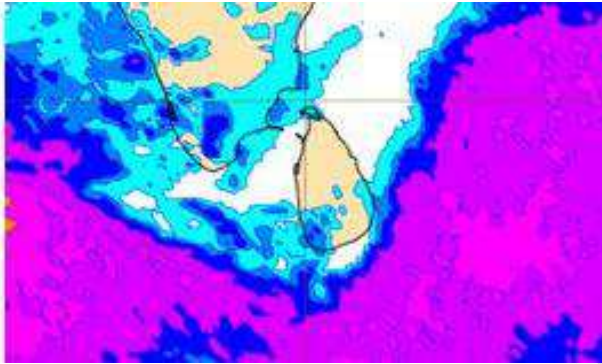
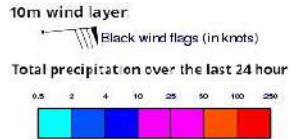
Wind Gust (m/s)



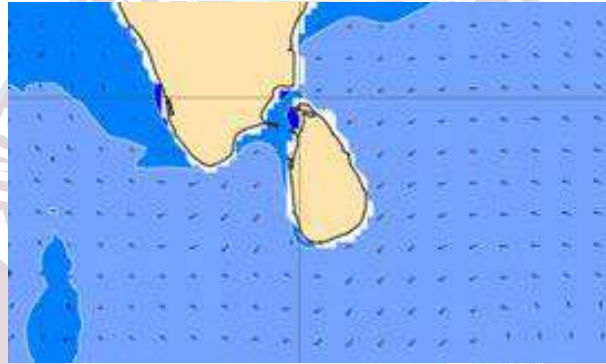
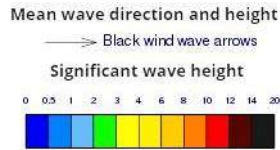
Showers or thundershowers will occur at several places in the sea areas extending from Colombo to Hambantota via Galle and Matara.

Wind speed will be 20-30 kmph in the sea areas around the island and wind speed can be increased up to 40- 50 kmph at times and sea condition will be rough at times.

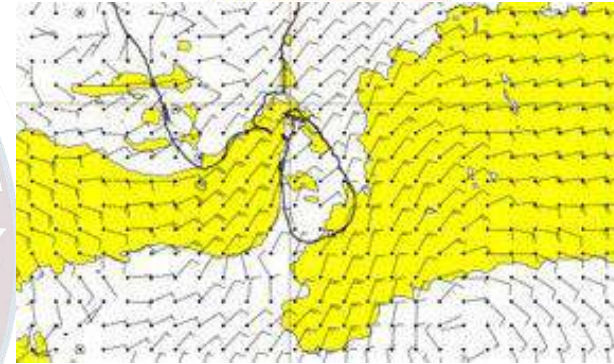
Wind and Rainfall Forecast (Total precipitation for 24 hrs)



Significant wave height (in meters)



Wind Gust (m/s)



Showers or thundershowers will occur at times in the sea areas around the island.

Wind speed will be 20-30 kmph in the sea areas around the island. Wind speed can be increased up to 40-50 kmph at times and sea condition will be rough at times in the sea areas off the coast extending from Colombo to Kankasanthurai via Puttalam and Mannar, and also from Galle to Pottuvil via Hambantota and Matara



Thank you!