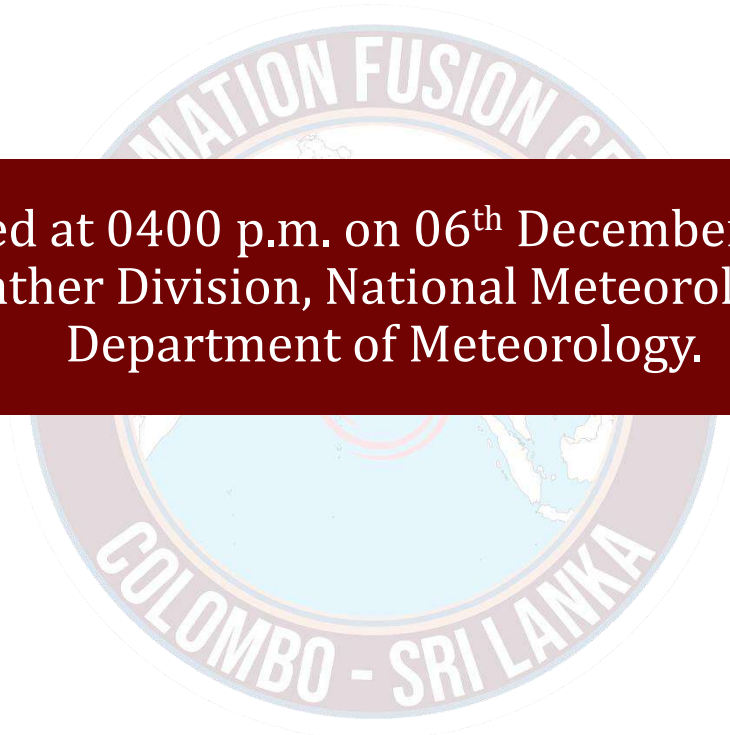




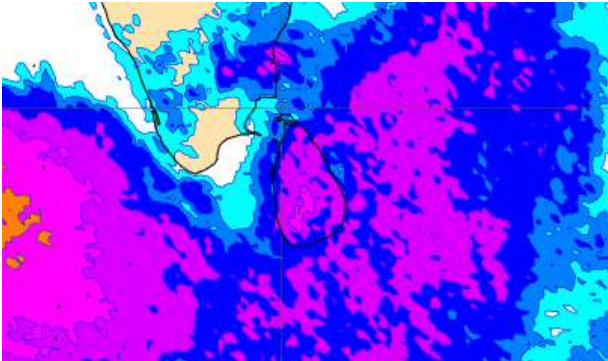
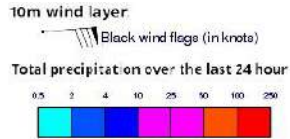
INFORMATION FUSION CENTRE COLOMBO

08 DAYS FORECAST FOR COASTAL AREAS AROUND SRI LANKA

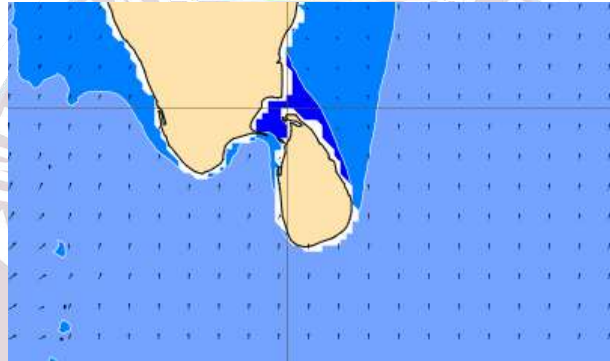
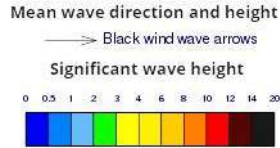


Issued at 0400 p.m. on 06th December 2023
Marine Weather Division, National Meteorological Centre
Department of Meteorology.

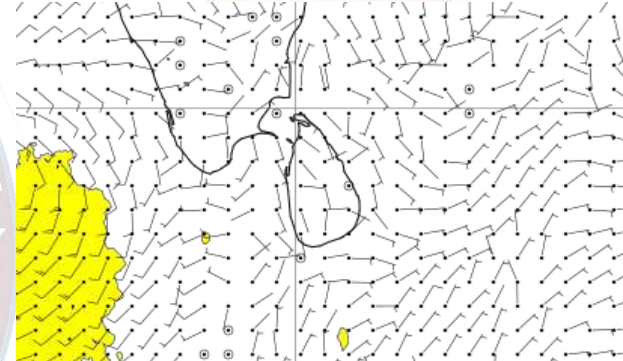
Wind and Rainfall Forecast (Total precipitation for 24 hrs)



Significant wave height (in meters)



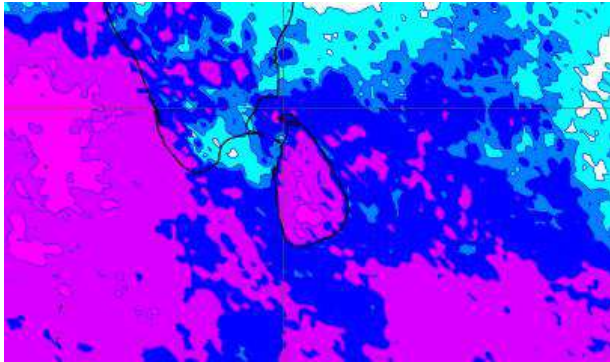
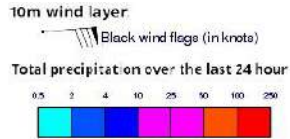
Wind Gust (m/s)



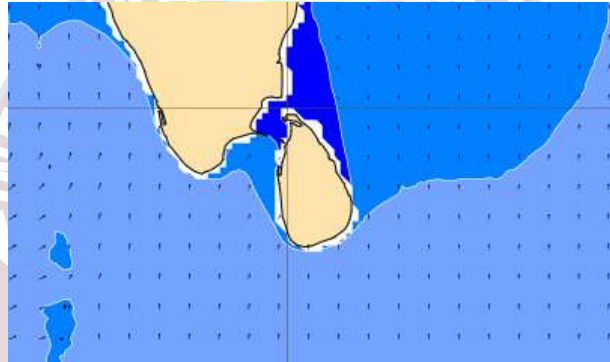
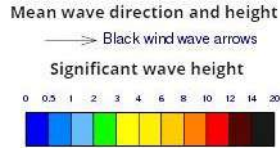
Showers or thundershowers will occur at several places in the sea areas around the island.

Wind speed will be 25-35 kmph in the sea areas around.

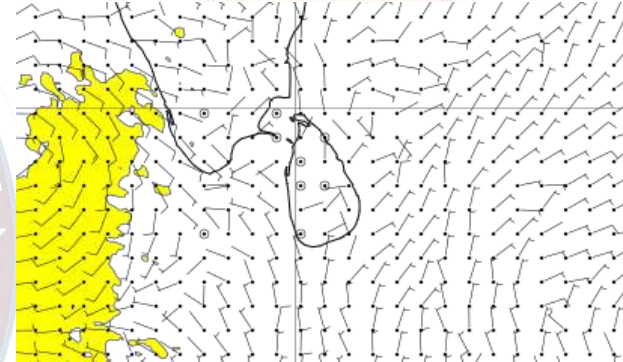
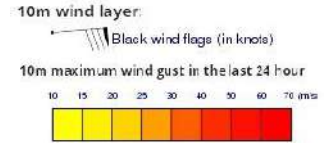
Wind and Rainfall Forecast (Total precipitation for 24 hrs)



Significant wave height (in meters)



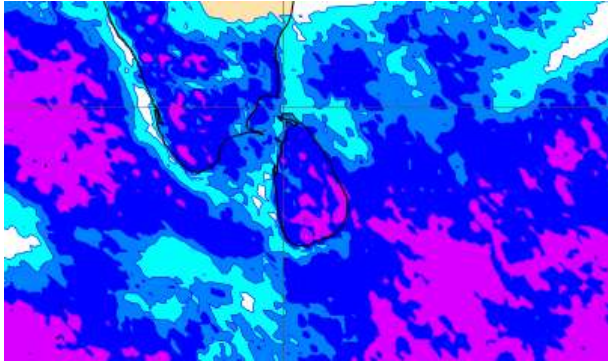
Wind Gust (m/s)



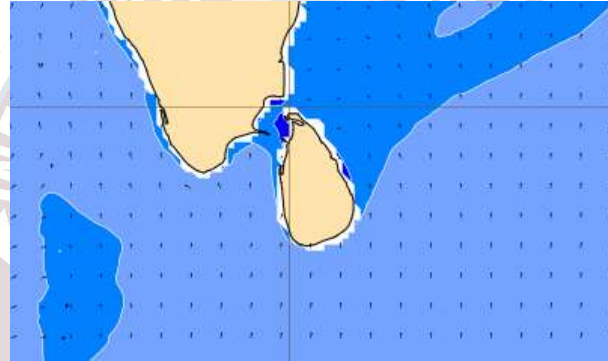
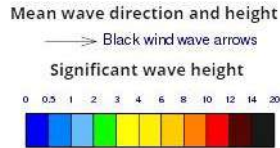
Showers or thundershowers will occur at several places in the sea areas around the island.

Wind speed will be 20-35 kmph in the sea areas around.

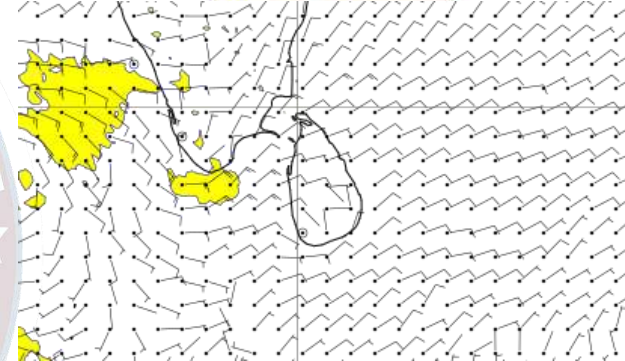
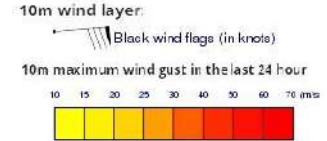
Wind and Rainfall Forecast (Total precipitation for 24 hrs)



Significant wave height (in meters)



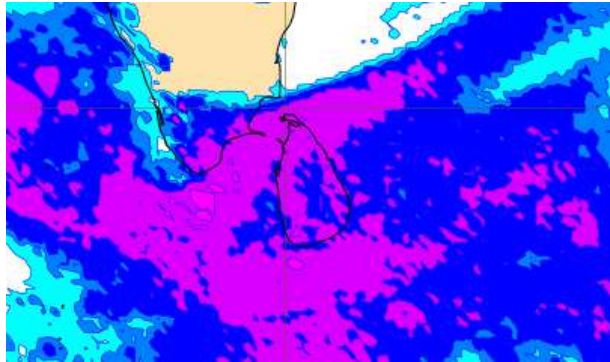
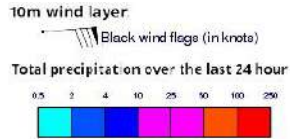
Wind Gust (m/s)



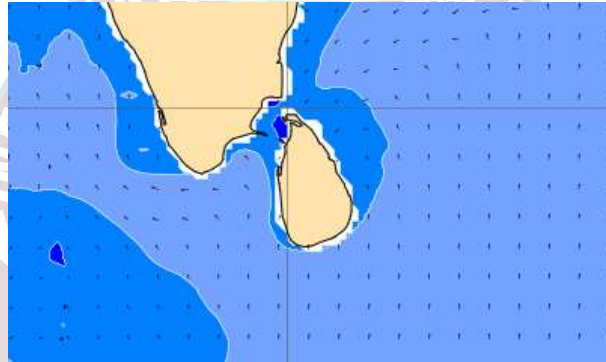
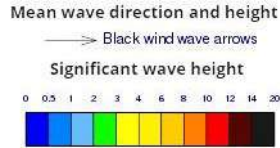
Showers or thundershowers will occur at several places in the sea areas off the coast extending from Galle to Batticaloa via Matara and Hambantota. Showers or thundershowers will occur at a few places in the other sea areas around the island.

Wind speed will be 20-30 kmph in the sea areas around the island.

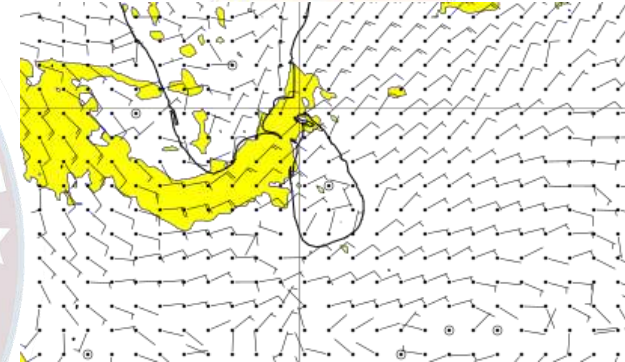
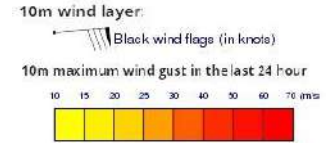
Wind and Rainfall Forecast (Total precipitation for 24 hrs)



Significant wave height (in meters)



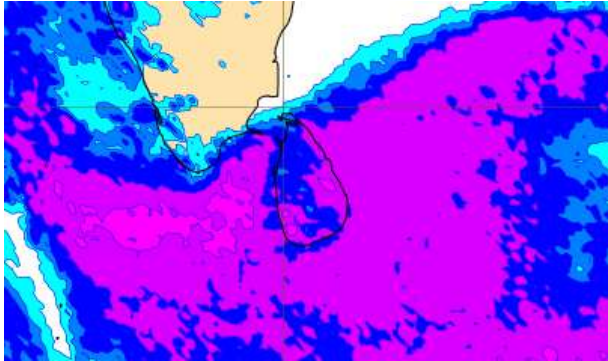
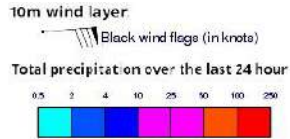
Wind Gust (m/s)



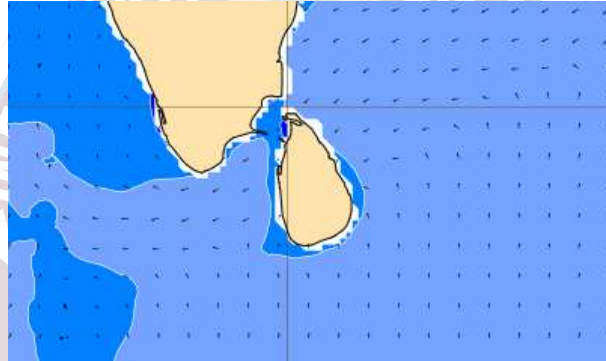
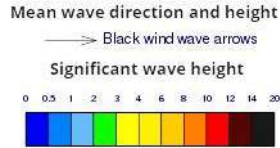
Showers or thundershowers will occur at several places in the sea areas around the island.

Wind speed will be 20-30 kmph in the sea areas around the island. Wind speed can increase up to 45 kmph at times and the sea condition will be fairly rough at times in the sea areas off the coast extending from Colombo to Kankasanturai via Mannar.

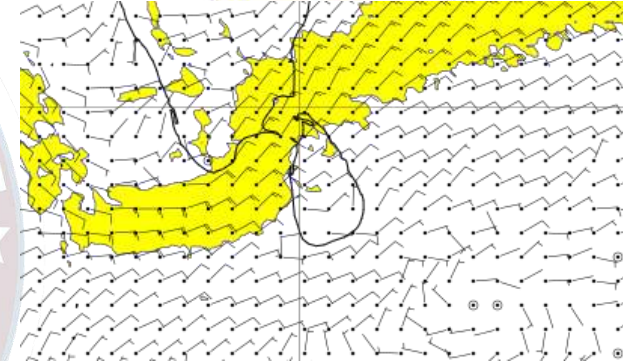
Wind and Rainfall Forecast (Total precipitation for 24 hrs)



Significant wave height (in meters)



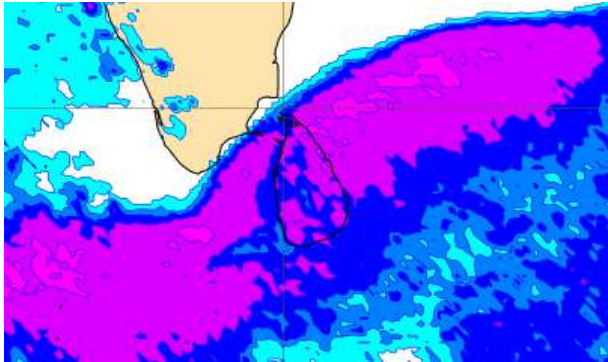
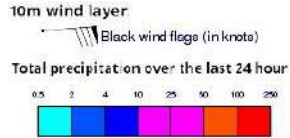
Wind Gust (m/s)



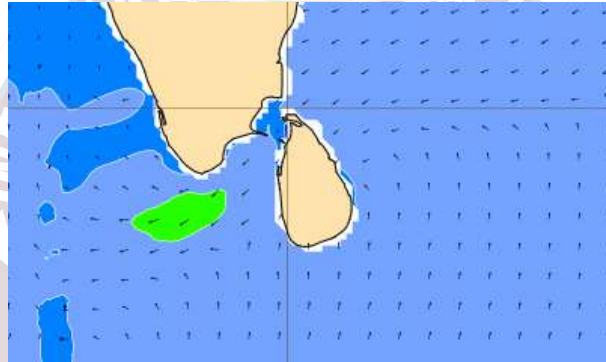
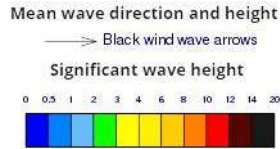
Showers or thundershowers will occur at several places in the sea areas around the island.

Wind speed will be 20-30 kmph in the sea areas around the island. Wind speed can increase up to 45 kmph at times and the sea condition will be fairly rough at times in the sea areas off the coast extending from Colombo to Trincomalee via Mannar and Kankasanturai.

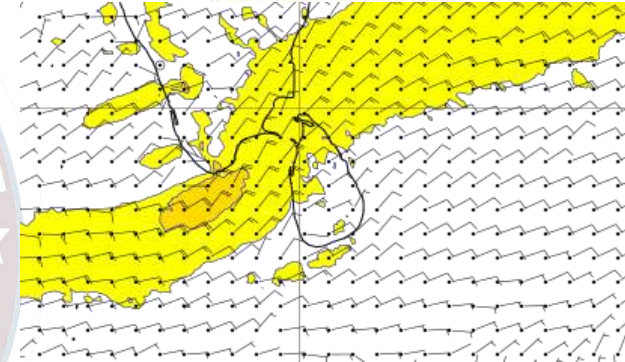
Wind and Rainfall Forecast (Total precipitation for 24 hrs)



Significant wave height (in meters)



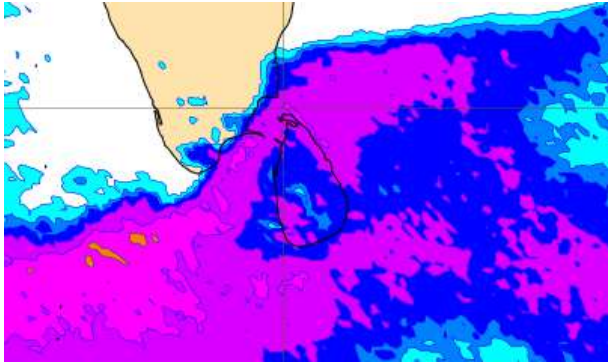
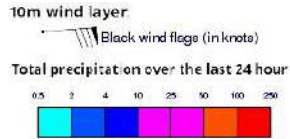
Wind Gust (m/s)



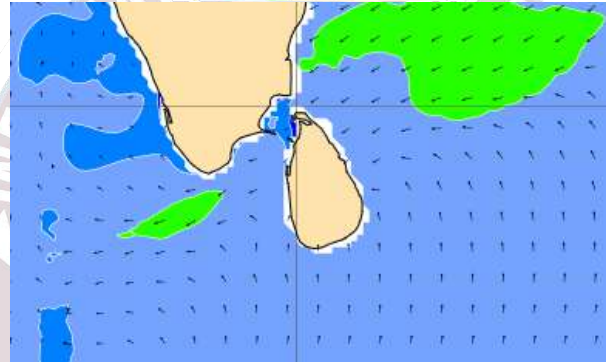
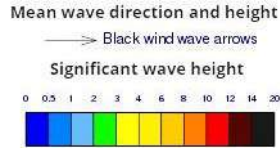
Showers or thundershowers will occur at several places in the sea areas around the island.

Wind speed will be 20-30 kmph in the sea areas around the island. Wind speed can increase up to 45 kmph at times and the sea condition will be fairly rough at times in the sea areas off the coast extending from Colombo to Trincomalee via Mannar and Kankasanturai and, from Galle to Hambantota via Matara.

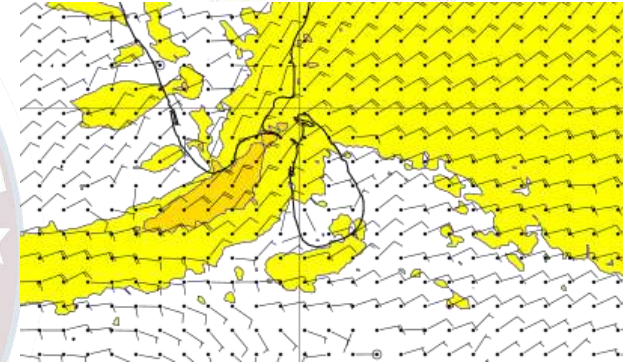
Wind and Rainfall Forecast (Total precipitation for 24 hrs)



Significant wave height (in meters)



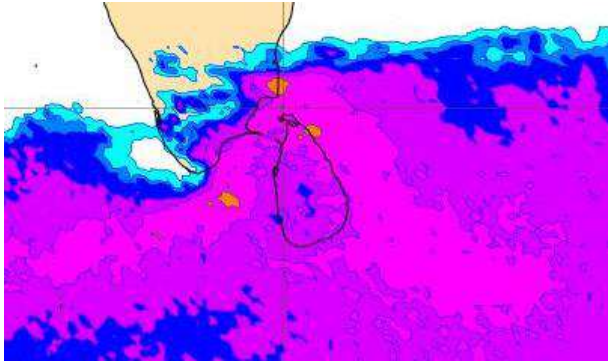
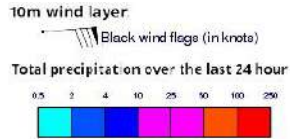
Wind Gust (m/s)



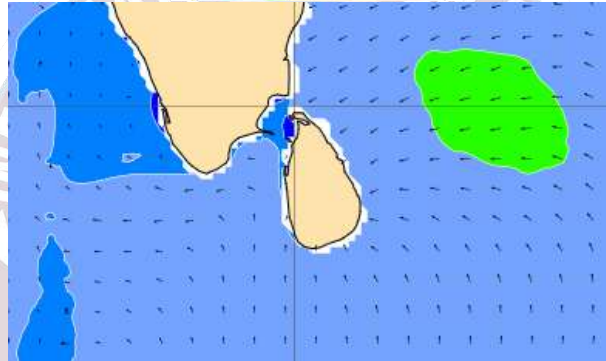
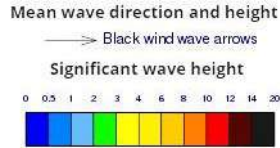
Showers or thundershowers will occur at several places in the sea areas around the island.

Wind speed will be 20-30 kmph in the sea areas around the island. Wind speed can increase up to 45 kmph at times and the sea condition will be fairly rough at times in the sea areas off the coast extending from Colombo to Trincomalee via Mannar and Kankasanturai and from Galle to Hambantota via Matara.

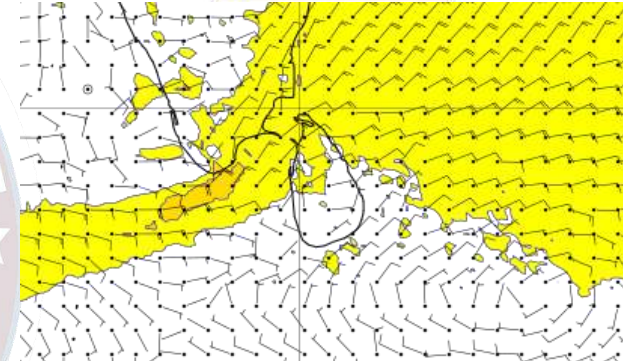
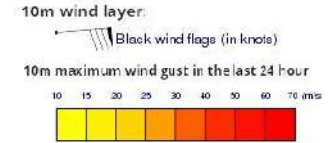
Wind and Rainfall Forecast (Total precipitation for 24 hrs)



Significant wave height (in meters)



Wind Gust (m/s)



Showers or thundershowers will occur at several places in the sea areas around the island.

Wind speed will be 20-30 kmph in the sea areas around the island. Wind speed can increase up to 45 kmph at times and the sea condition will be fairly rough at times in the sea areas off the coast extending from Colombo to Trincomalee via Mannar and Kankasanturai, and from Galle to Hambantota via Matara.



Thank you!