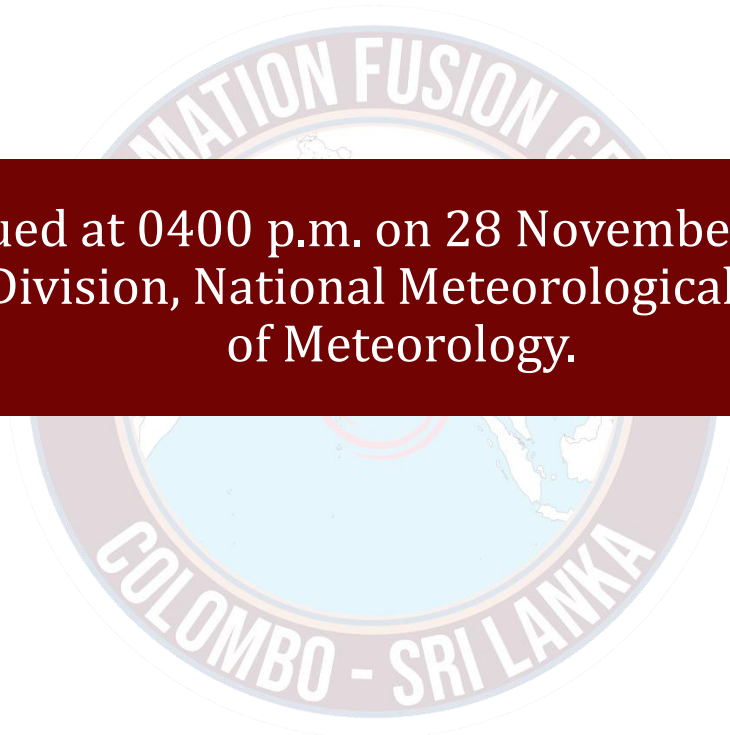




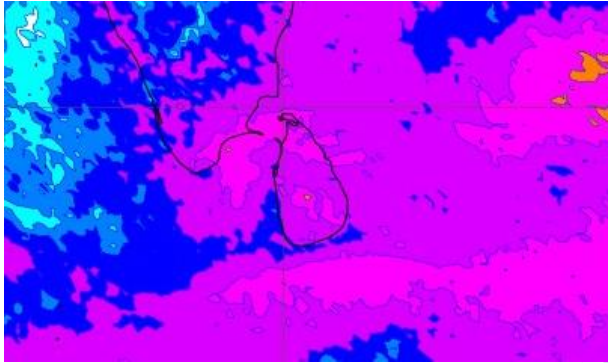
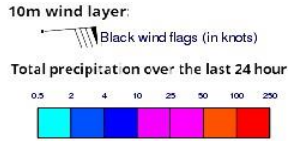
INFORMATION FUSION CENTRE COLOMBO

07 DAYS FORECAST FOR COASTAL AREAS AROUND SRI LANKA

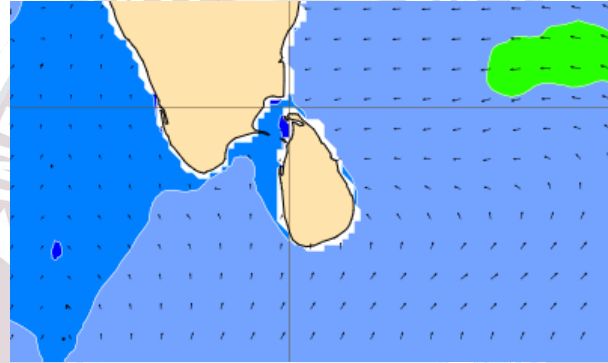
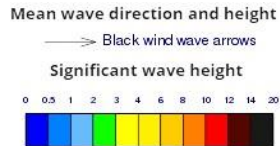


Issued at 0400 p.m. on 28 November 2023
Marine Weather Division, National Meteorological Centre, Department
of Meteorology.

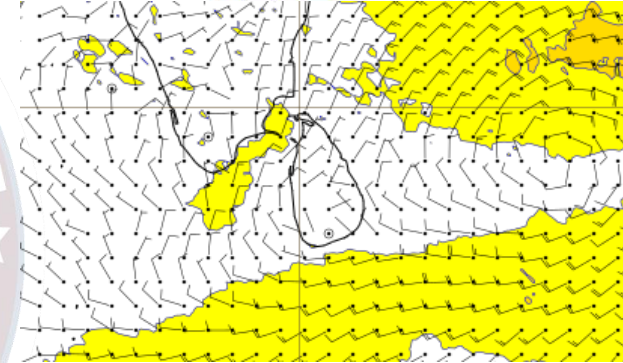
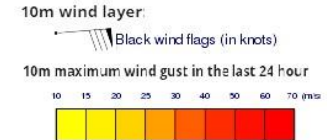
Wind and Rainfall Forecast (Total precipitation for 24 hrs)



Significant wave height (in meters)



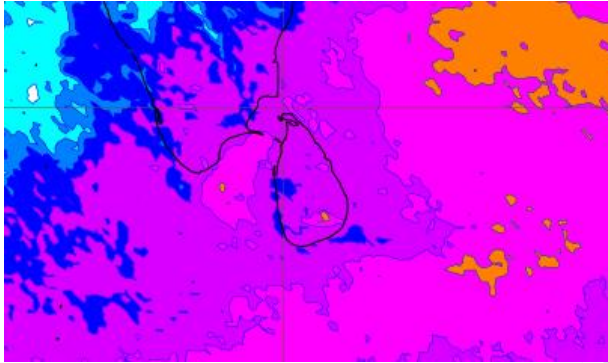
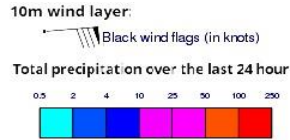
Wind Gust (m/s)



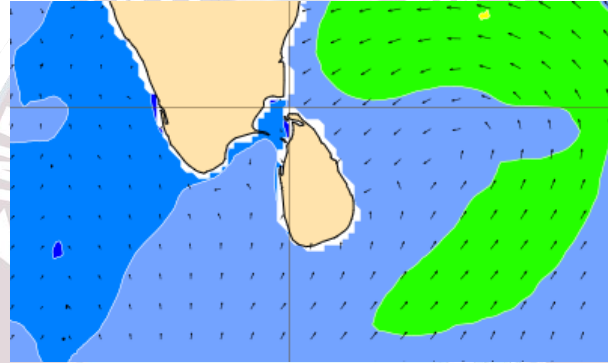
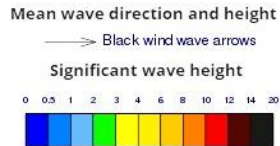
Showers or thundershowers will occur at several places in the sea areas around the island. Heavy showers are likely at some places.

Wind speed will be 20-35 kmph in the sea areas around the island. Wind speed can be increase up to 45 kmph at times and sea condition will be fairly rough at times in the sera areas off the coast extending from Puttlam to Kankasanturai via Mannar and from Galle to Hambantota via Matara.

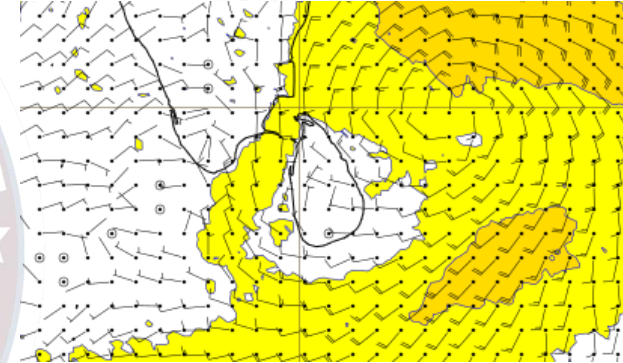
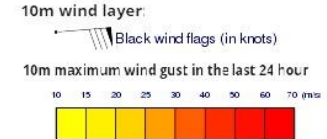
Wind and Rainfall Forecast (Total precipitation for 24 hrs)



Significant wave height (in meters)



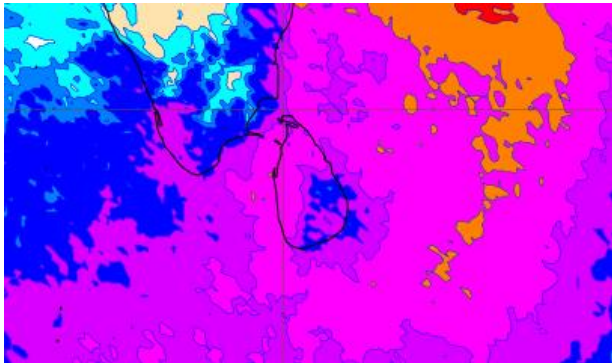
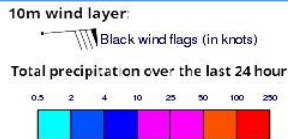
Wind Gust (m/s)



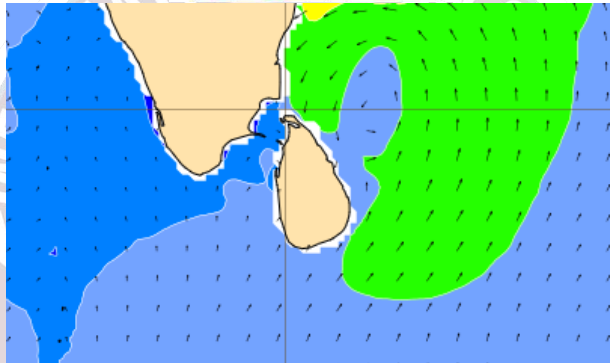
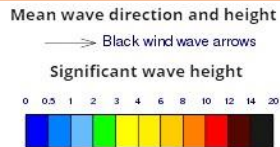
Showers or thundershowers will occur at times in the sea areas around the island. Heavy showers are likely at some places.

Wind speed will be 20-35 kmph in the sea areas around the island. Wind speed can be increase up to 45 kmph at times and sea condition will be fairly rough at times in the sera areas off the coast extending from Colombo to Trincomalee via Mannar and Kankasanturai.

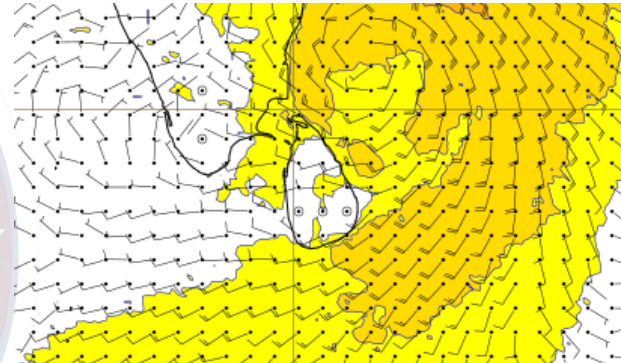
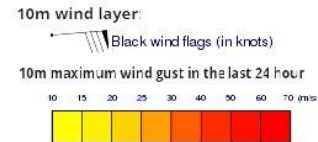
Wind and Rainfall Forecast (Total precipitation for 24 hrs)



Significant wave height (in meters)



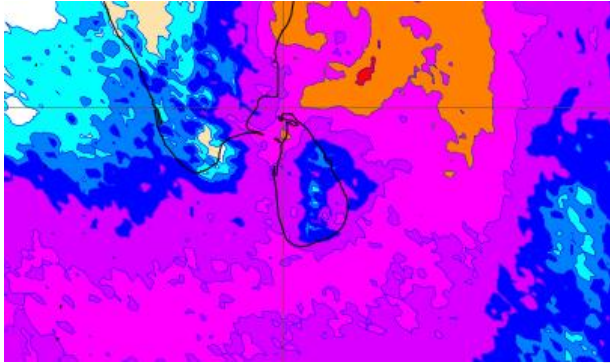
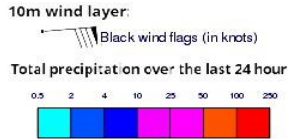
Wind Gust (m/s)



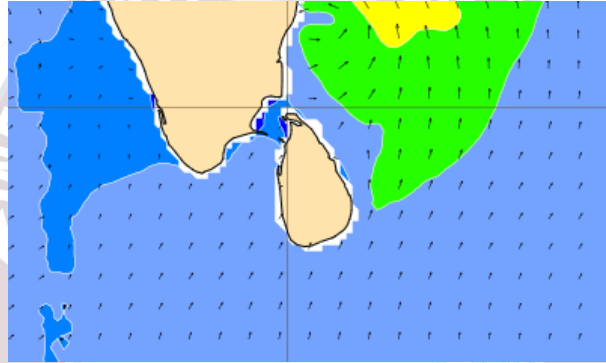
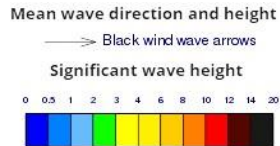
Showers or thundershowers will occur at times in the sea areas around the island. Heavy showers are likely at some places.

Wind speed will be 30-40 kmph in the sea areas around the island. Wind speed can be increase up to 50 kmph at times and sea condition will be rough at times in the sea areas off the coast extending from Mannar to Galle via Kankasanturai, Batticaloa and Hambantota.

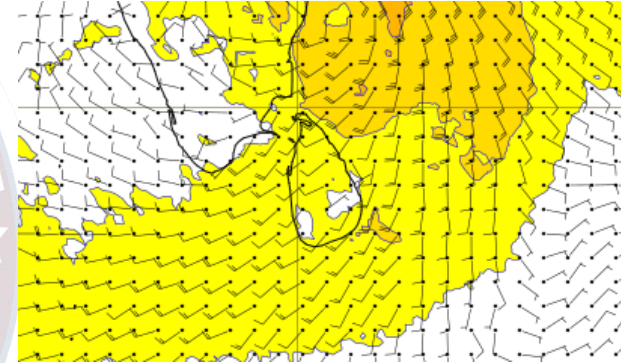
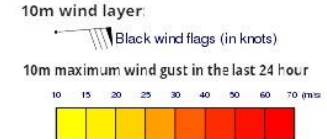
Wind and Rainfall Forecast (Total precipitation for 24 hrs)



Significant wave height (in meters)



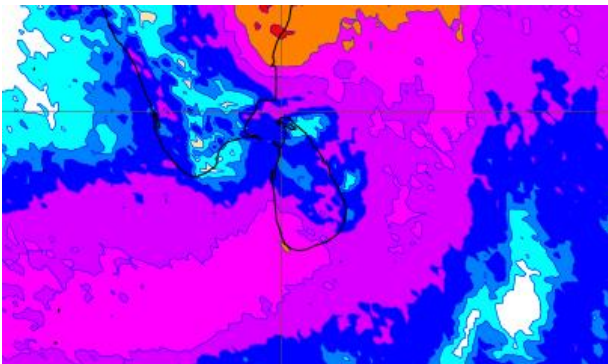
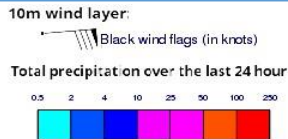
Wind Gust (m/s)



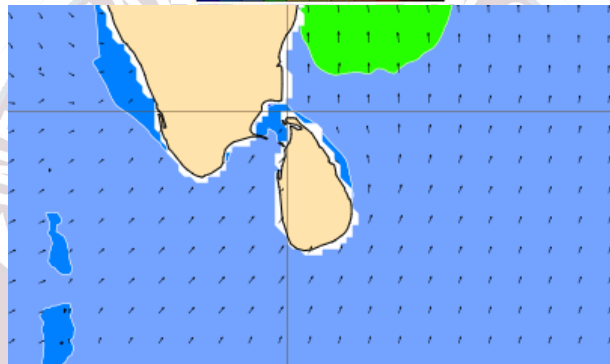
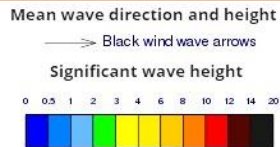
Showers or thundershowers will occur at times in the sea areas around the island. Heavy showers are will occur at some places.

Wind speed will be 30-40 kmph in the sea areas around the island. Wind speed can be increase up to 50 kmph at times and sea condition will be rough at times in the sea areas off the coast extending from Kankasanturai to Hambantota via Batticaloa.

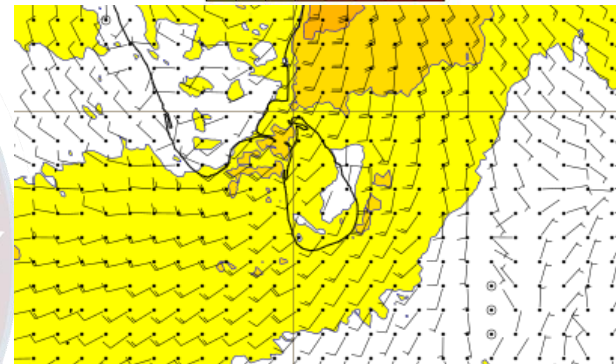
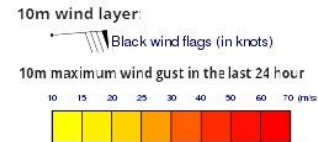
Wind and Rainfall Forecast (Total precipitation for 24 hrs)



Significant wave height (in meters)



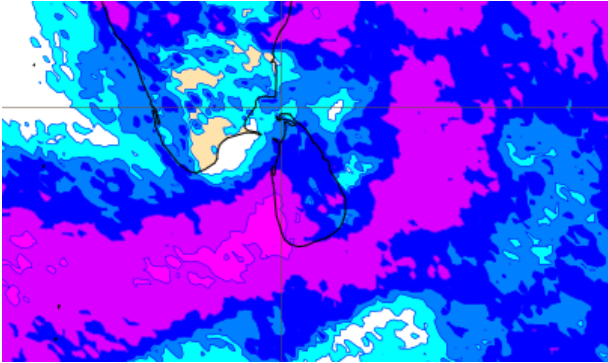
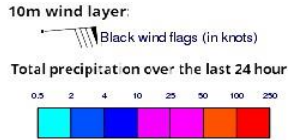
Wind Gust (m/s)



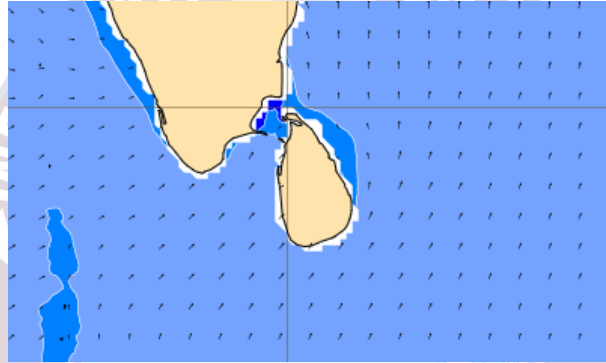
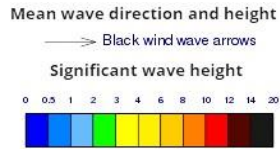
Showers or thundershowers will occur at times in the sea areas around the island. Heavy showers are will occur at some places.

Wind speed will be 30-40 kmph in the sea areas around the island. Wind speed can be increase up to 50 kmph at times and sea condition will be rough at times in the sea areas off the coast extending from Mannar to Galle via Kankasanturai, Batticaloa and Hambantota.

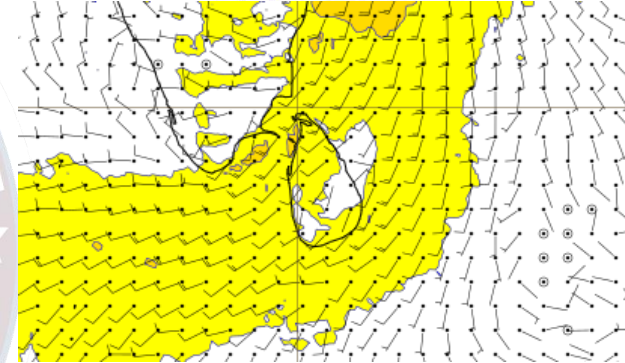
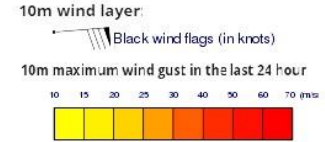
Wind and Rainfall Forecast (Total precipitation for 24 hrs)



Significant wave height (in meters)



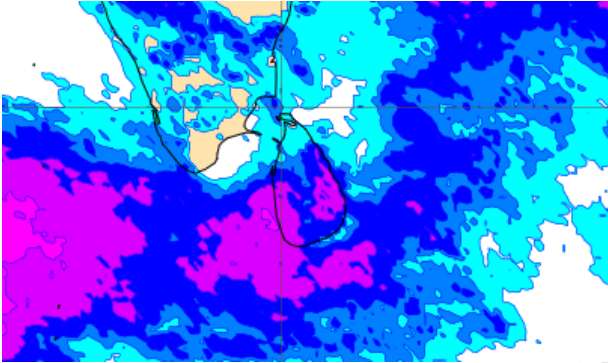
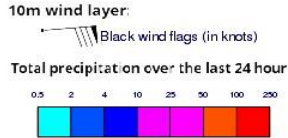
Wind Gust (m/s)



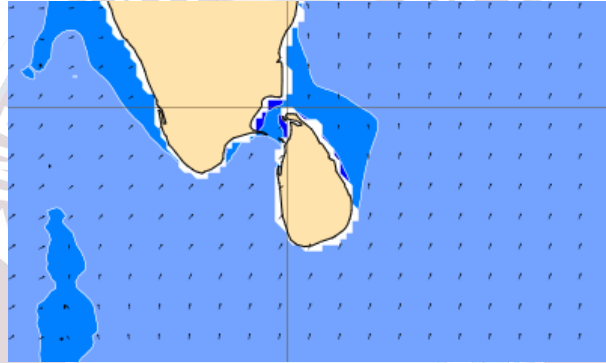
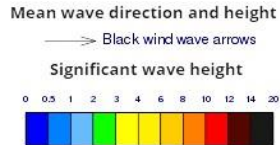
Showers or thundershowers will occur at a several places in the sea areas off the coast extending from Puttalam to Pottuvil via Colombo, Galle and Hambanthota particularly during afternoon or night.

Wind speed will be 20-35 kmph in the sea areas around the island.

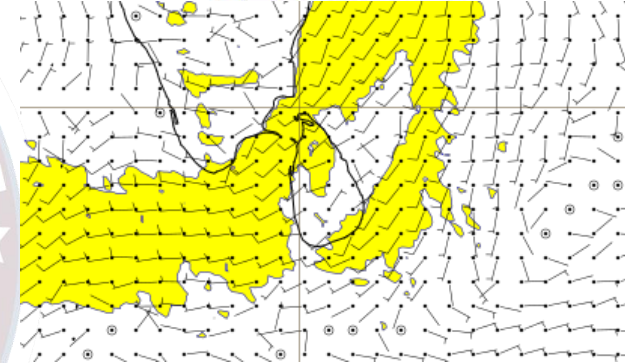
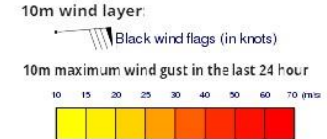
Wind and Rainfall Forecast (Total precipitation for 24 hrs)



Significant wave height (in meters)



Wind Gust (m/s)



Showers or thundershowers will occur at a several places in the sea areas off the coast extending from Puttalam to Pottuvil via Colombo, Galle and Hambantota particularly during afternoon or night.

Wind speed will be 20-35 kmph in the sea areas around the island.



Thank you!