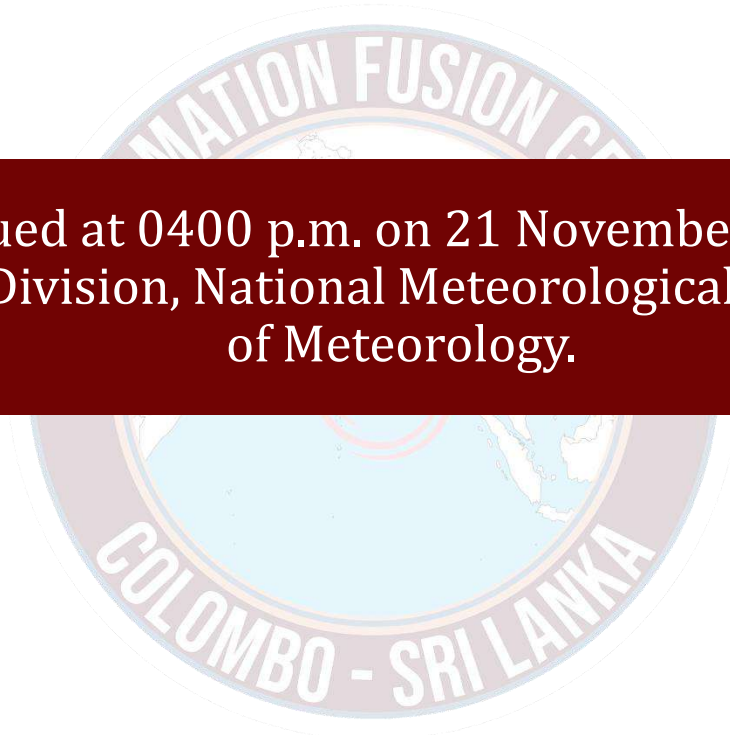




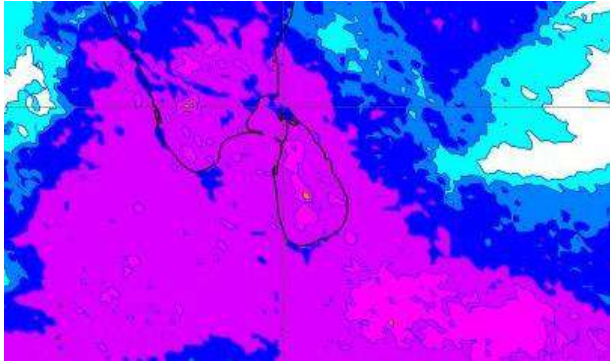
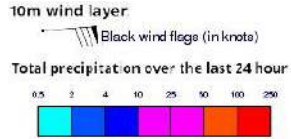
# **INFORMATION FUSION CENTRE COLOMBO**

**08 DAYS FORECAST FOR COASTAL AREAS AROUND SRI LANKA**

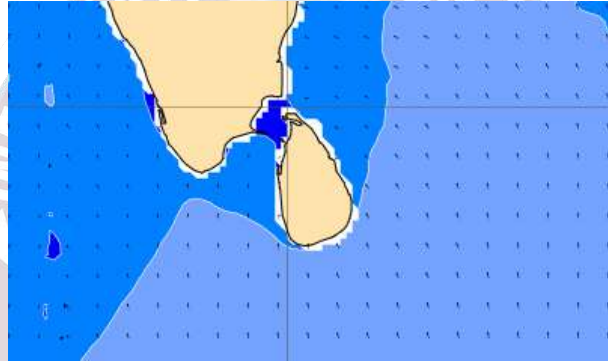
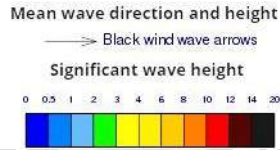


Issued at 0400 p.m. on 21 November 2023  
Marine Weather Division, National Meteorological Centre, Department  
of Meteorology.

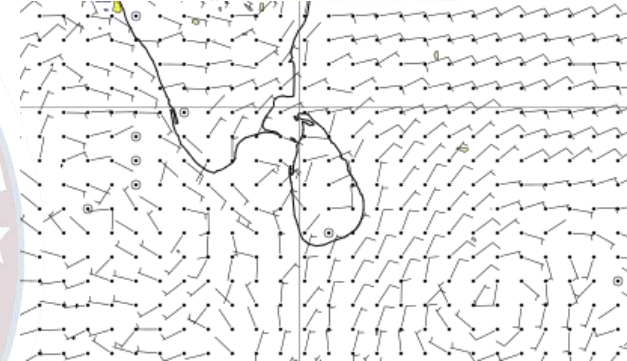
## Wind and Rainfall Forecast (Total precipitation for 24 hrs)



## Significant wave height (in meters)



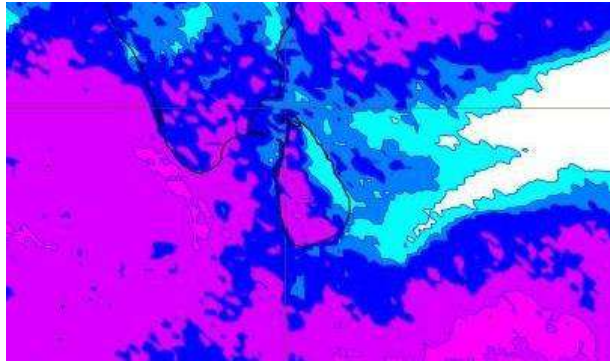
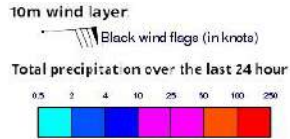
## Wind Gust (m/s)



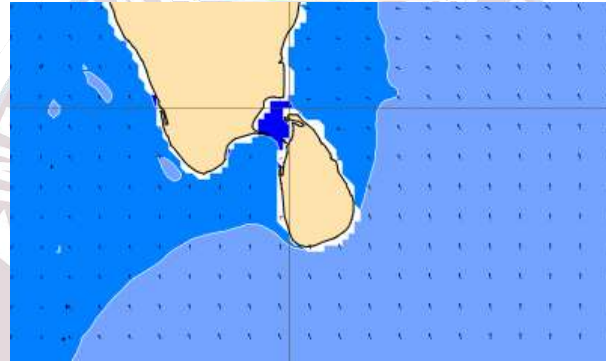
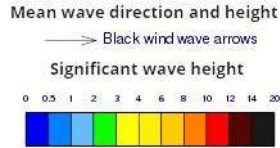
Showers or thundershowers will occur at several places in the sea areas around the island particularly during afternoon or night. Heavy showers are likely at some places.

Wind speed will be 20-30 kmph in the sea areas around the island.

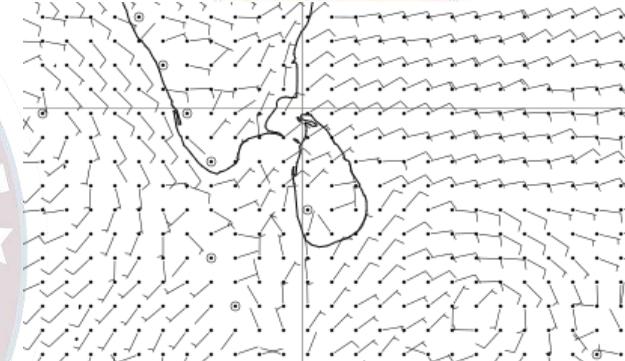
## Wind and Rainfall Forecast (Total precipitation for 24 hrs)



## Significant wave height (in meters)



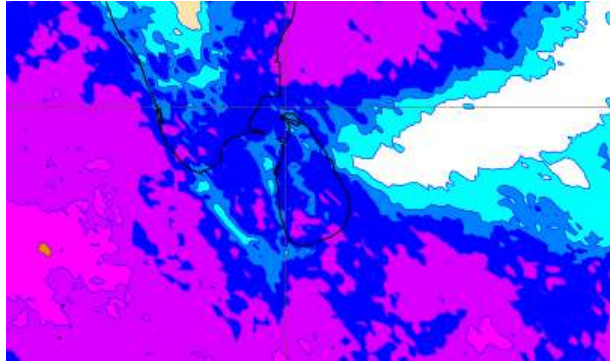
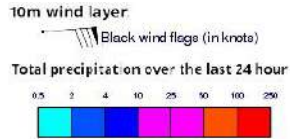
## Wind Gust (m/s)



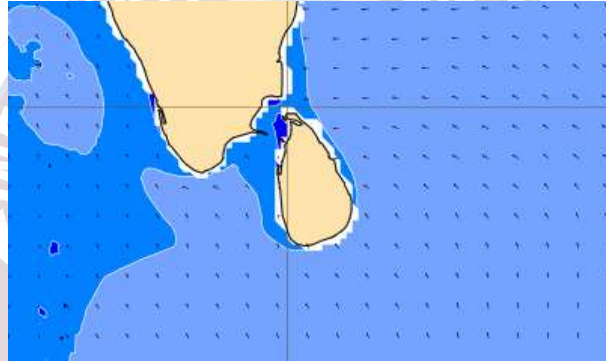
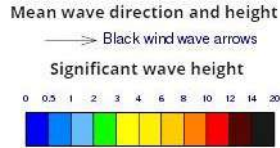
Showers or thundershowers will occur at several places in the sea areas off the coast extending from Kankasanthurai to Hambantota via Colombo and Galle. Showers or thundershowers will occur at a few places in the other sea areas around the island particularly during afternoon or night.

Wind speed will be 20-30 kmph in the sea areas around the island.

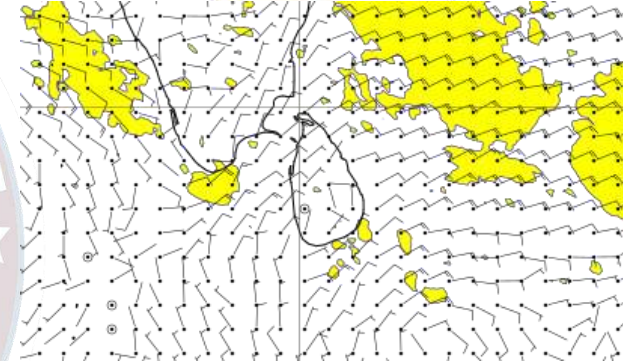
## Wind and Rainfall Forecast (Total precipitation for 24 hrs)



## Significant wave height (in meters)



## Wind Gust (m/s)

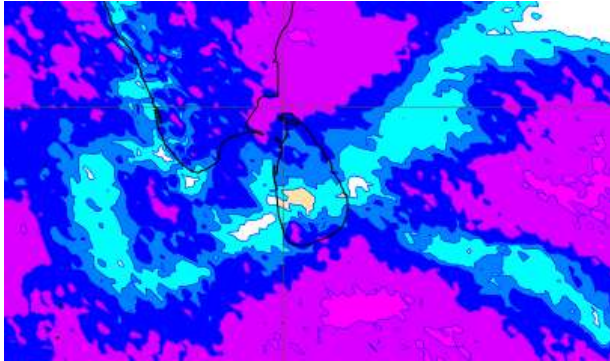
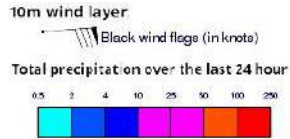


Showers or thundershowers will occur at several places in the sea areas off the coast extending from Trincomalee to Hambantota via Kankasanthurai, Mannar, Puttalam, Colombo and Galle. Showers or thundershowers will occur at a few places in the other sea areas around the island particularly during afternoon or night.

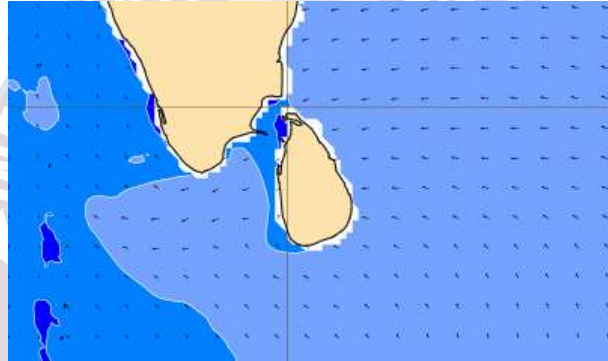
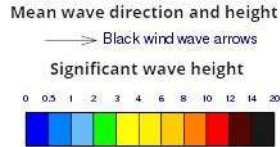
Wind speed will be 20-30 kmph in the sea areas around the island.



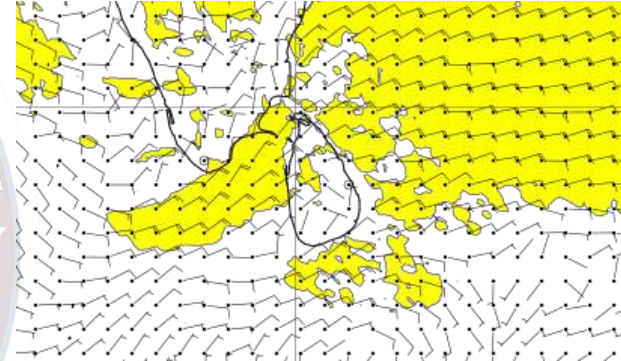
## Wind and Rainfall Forecast (Total precipitation for 24 hrs)



## Significant wave height (in meters)



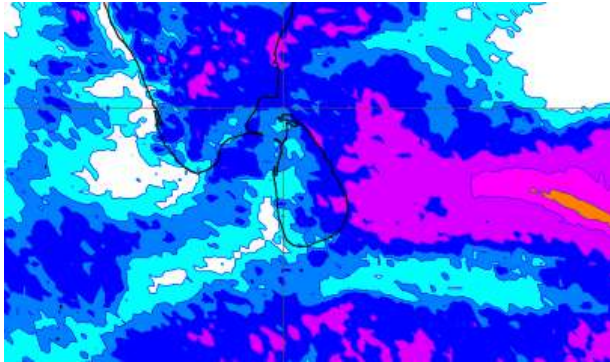
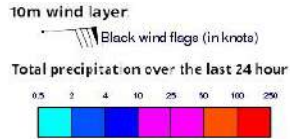
## Wind Gust (m/s)



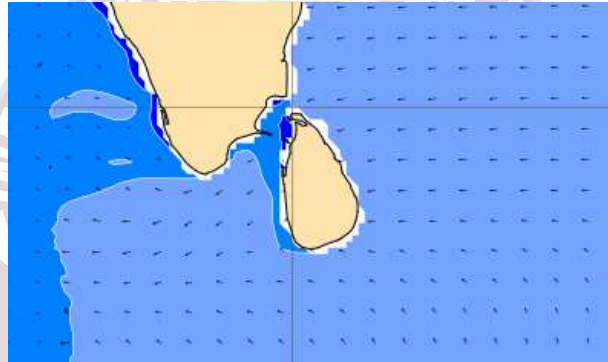
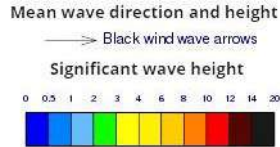
Showers or thundershowers will occur at several places in the sea areas off the coast extending from Trincomalee to Mannar via Kankasanturai and from Galle to Hambantota via Matara. Showers or thundershowers will occur at a few places in the other sea areas around the island particularly during afternoon or night.

Wind speed will be 20-35 kmph in the sea areas around. Wind speed can increase up to 45 kmph at times and the sea condition will be fairly rough at times in the sea areas off the coast extending from Colombo to Trincomalee via Puttalam, Mannar and Kankasanthurai...

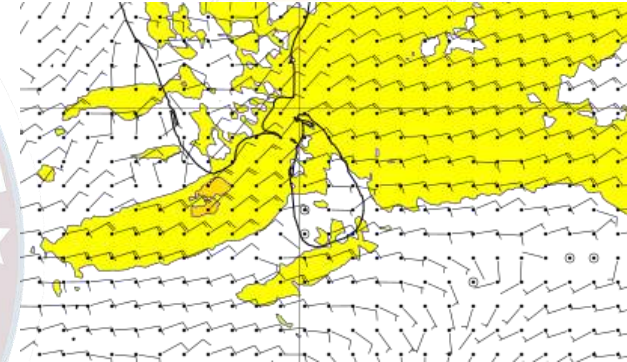
## Wind and Rainfall Forecast (Total precipitation for 24 hrs)



## Significant wave height (in meters)



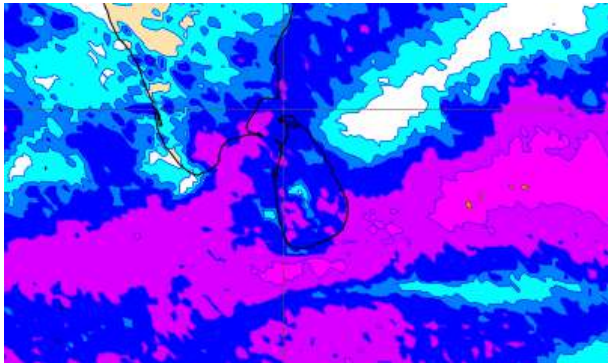
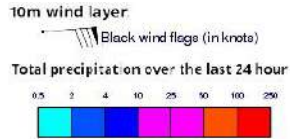
## Wind Gust (m/s)



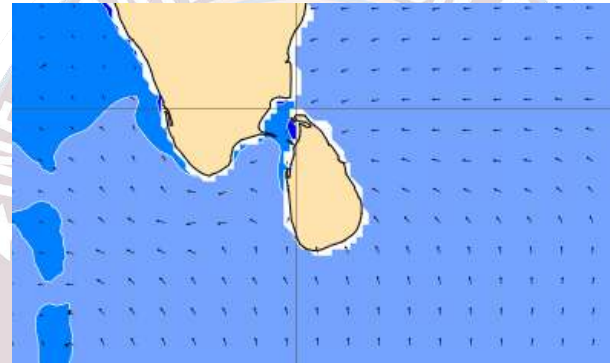
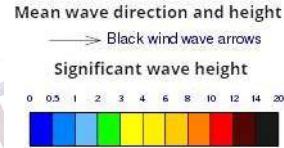
Showers or thundershowers will occur at several places in the sea areas off the coast extending from Kankasanturai to Hambantota via Trincomalee, Batticaloa and Pottuvil. Showers or thundershowers will occur at a few places in the other sea areas around the island particularly during afternoon or night.

Wind speed will be 20-35 kmph in the sea areas around. Wind speed can increase up to 45 kmph at times and the sea condition will be fairly rough at times in the sea areas off the coast extending from Colombo to Galle via Puttalam, Mannar, Kankasanthurai, Trincomalee, Batticaloa and Hambantota.

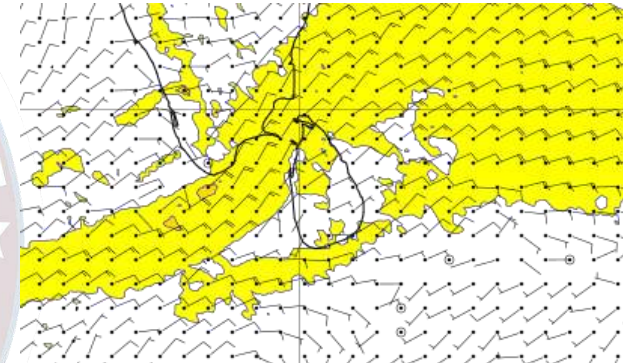
## Wind and Rainfall Forecast (Total precipitation for 24 hrs)



## Significant wave height (in meters)



## Wind Gust (m/s)

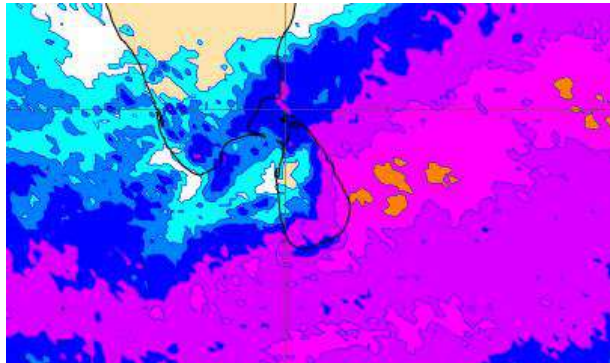
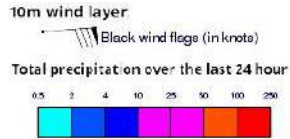


Showers or thundershowers will occur at several places in the sea areas off the coast extending from Trincomalee to Pottuvil via Kankasanthurai, Mannar, Puttalam, Colombo, Galle and Hambantota. Heavy showers are likely at some places. Showers or thundershowers will occur at a few places in the other sea areas around the island particularly during afternoon or night.

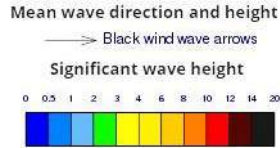
Wind speed will be 20-35 kmph in the sea areas around. Wind speed can increase up to 45 kmph at times and the sea condition will be fairly rough at times in the sea areas off the coast extending from Colombo to Trincomalee via Puttalam, Mannar and Kankasanthurai and from Galle to Hambantota via Matara.



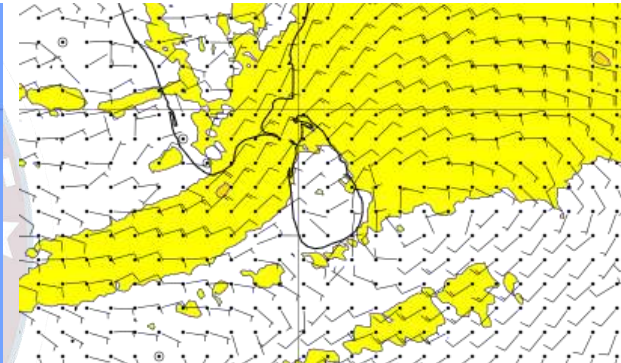
## Wind and Rainfall Forecast (Total precipitation for 24 hrs)



## Significant wave height (in meters)



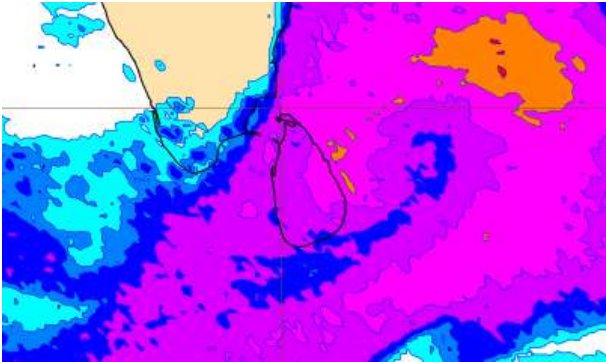
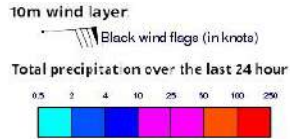
## Wind Gust (m/s)



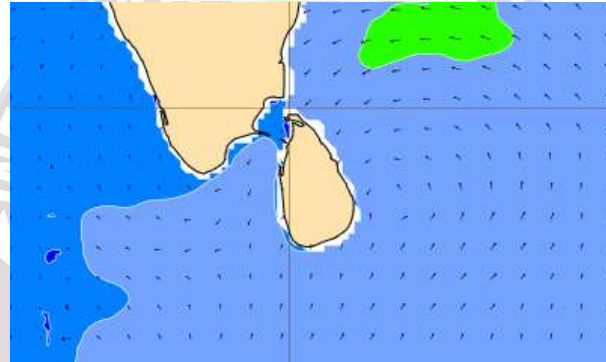
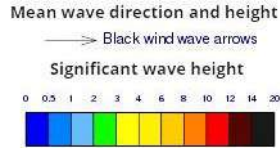
Showers or thundershowers will occur at several places in the sea areas off the coast extending from Kankasanthurai to Galle via Trincomalee, Batticaloa, Pottuvil and Hambantota. Heavy showers are likely at some places. Showers or thundershowers will occur at a few places in the other sea areas around the island particularly during afternoon or night.

Wind speed will be 20-35 kmph in the sea areas around. Wind speed can increase up to 50 kmph at times and the sea condition will be rough at times in the sea areas off the coast extending from Colombo to Galle via Puttalam, Mannar, Kankasanthurai, Trincomalee, Batticaloa and Hambantota.

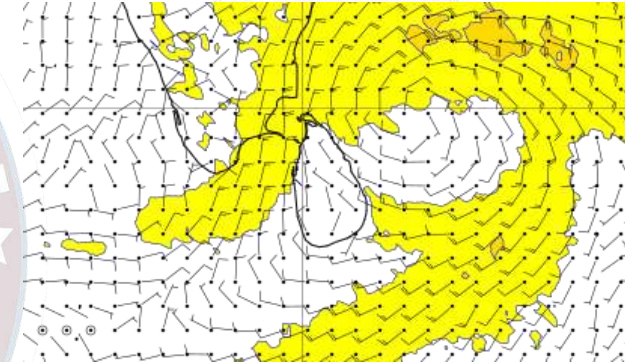
## Wind and Rainfall Forecast (Total precipitation for 24 hrs)



## Significant wave height (in meters)



## Wind Gust (m/s)



Showers or thundershowers will occur at several places in the sea areas around the island particularly during afternoon or night. Heavy showers are likely at some places.

Wind speed will be 20-35 kmph in the sea areas around the Island. Wind speed can increase up to 50 kmph at times and the sea condition will be fairly rough at times in the sea areas off the coast extending from Puttalam to Trincomalee via, Mannar and Kankasanthurai.



Thank you!