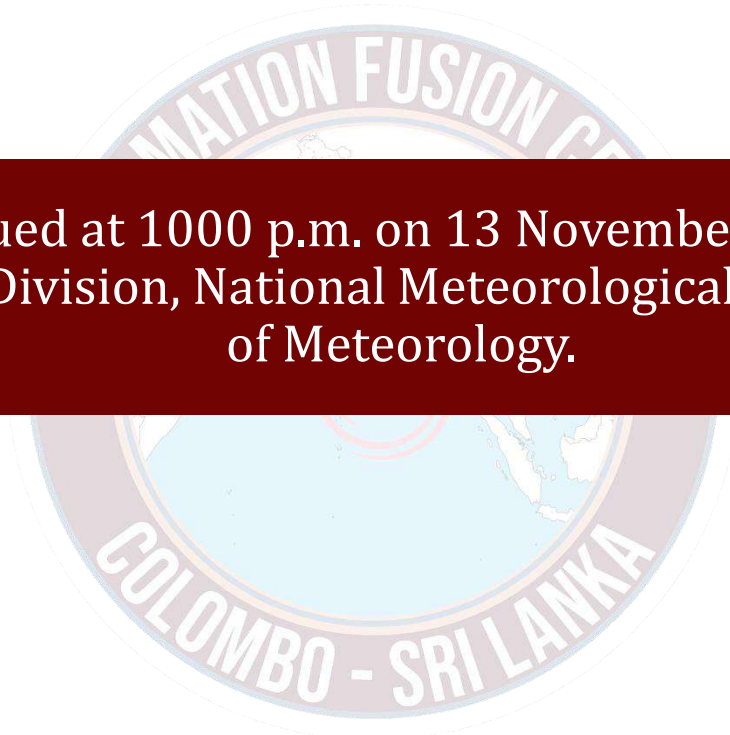




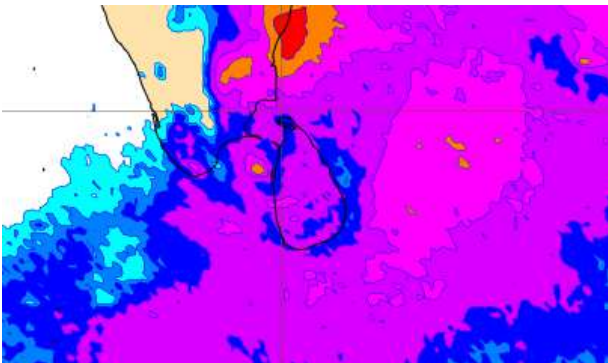
INFORMATION FUSION CENTRE COLOMBO

08 DAYS FORECAST FOR COASTAL AREAS AROUND SRI LANKA

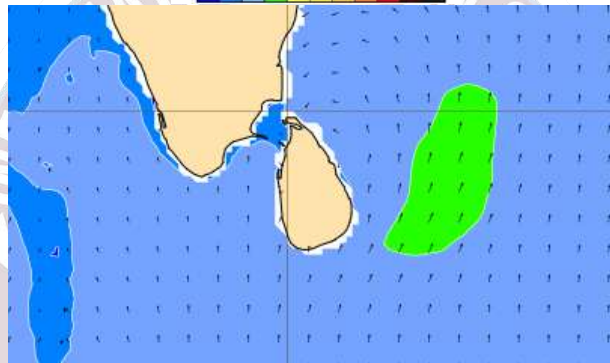
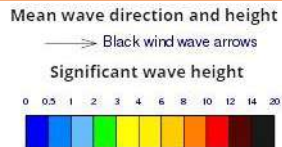


Issued at 1000 p.m. on 13 November 2023
Marine Weather Division, National Meteorological Centre, Department
of Meteorology.

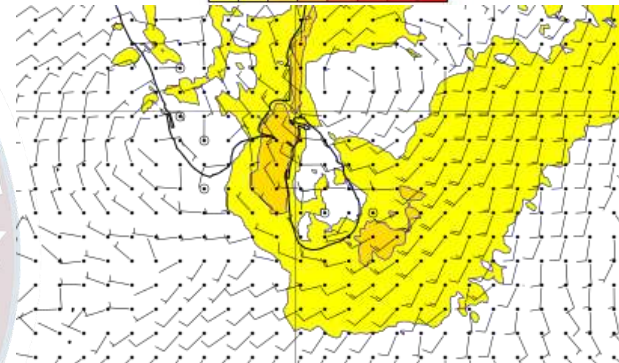
Wind and Rainfall Forecast (Total precipitation for 24 hrs)



Significant wave height (in meters)



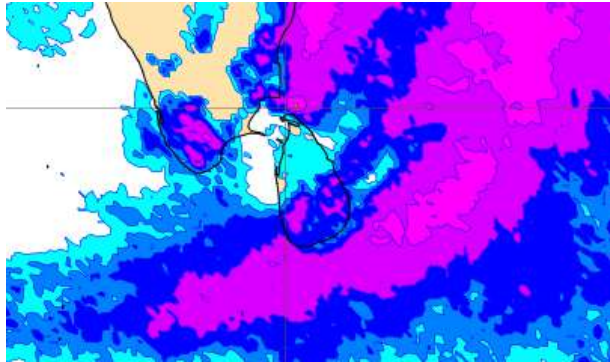
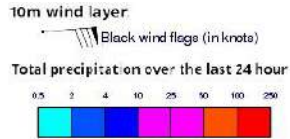
Wind Gust (m/s)



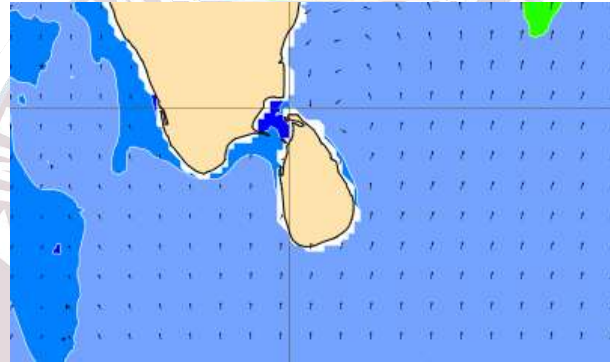
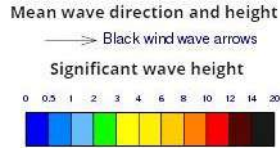
Showers or thundershowers will occur at several places in the sea areas around the island. Heavy showers can be occurred at some areas.

Wind speed will be 20-30 kmph in the sea areas around the island. Wind speed can increase up to 55 kmph at times and the sea condition will be rough at times in the sea areas off the coast extending from Trincomalee to Pottuvil via Kankasanthurai, Puttalam, Colombo, Galle and Hambantota. The other sea areas around the island will be slight.

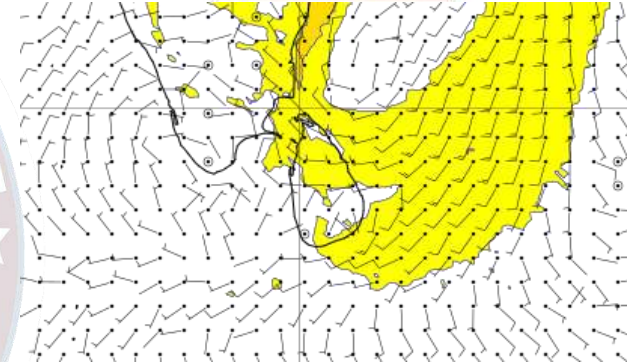
Wind and Rainfall Forecast (Total precipitation for 24 hrs)



Significant wave height (in meters)



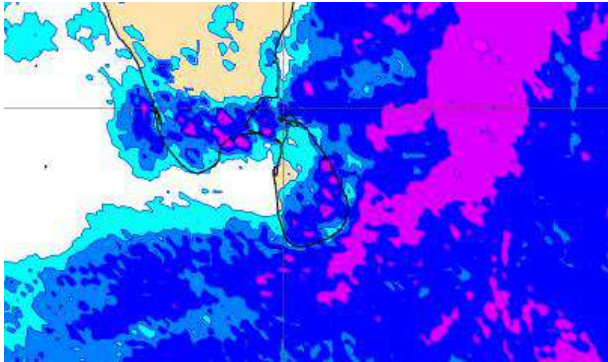
Wind Gust (m/s)



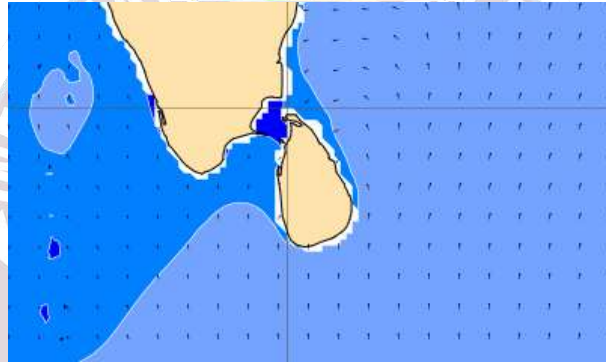
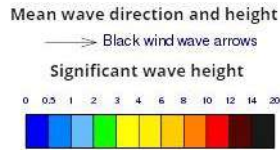
Showers or thundershowers will occur at several places in the sea areas off the coast extending from Kankasanthurai to Colombo via Trincomalee, Batticaloa, and Galle. Showers or thundershowers will occur at a few places in the other sea areas around the island particularly during afternoon or night.

Wind speed will be 20-30 kmph in the sea areas around the island. Wind speed can increase up to 50 kmph at times and sea condition will be rough at times in the sea areas off the coast extending from Kankasanthurai to Hambantota via Trincomalee. The other sea areas around the island will be slight.

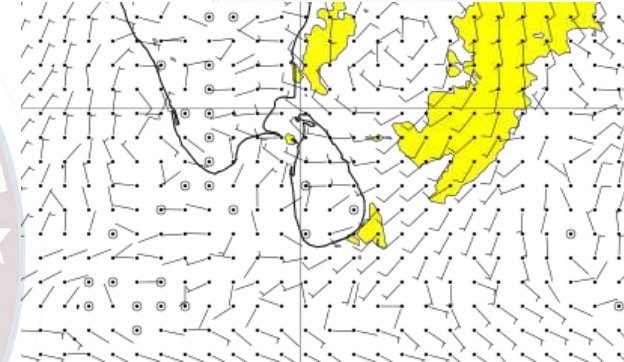
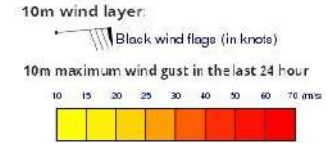
Wind and Rainfall Forecast (Total precipitation for 24 hrs)



Significant wave height (in meters)



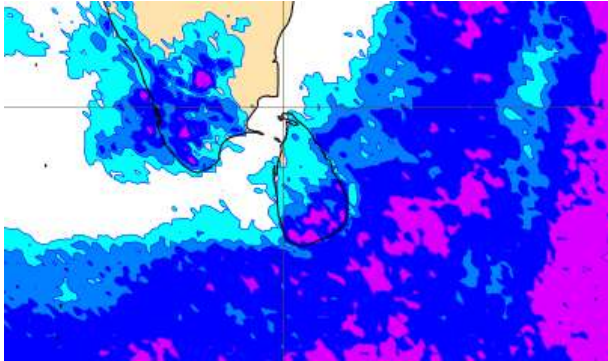
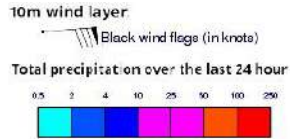
Wind Gust (m/s)



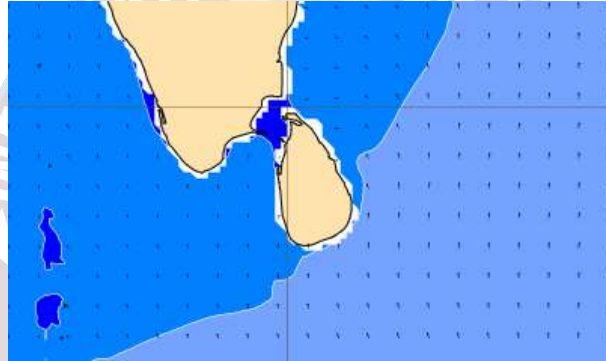
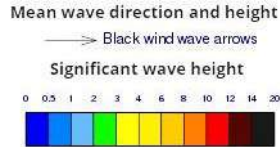
Showers or thundershowers will occur at several places in the sea areas off the coast extending from Mannar to Colombo via Kankasanthurai, Trincomalee, Batticaloa, and Galle.

Wind speed will be 20-30 kmph in the sea areas around the island. Wind speed can increase up to 40 kmph at times and sea condition will be fairly rough at times in the sea areas off the coast extending from Kankasanthurai to Hambantota via Trincomalee. The other sea areas around the island will be slight.

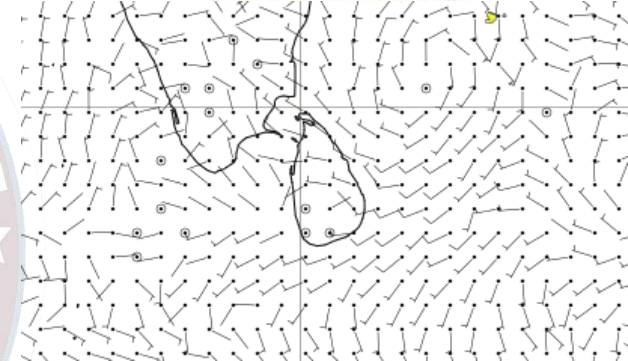
Wind and Rainfall Forecast (Total precipitation for 24 hrs)



Significant wave height (in meters)



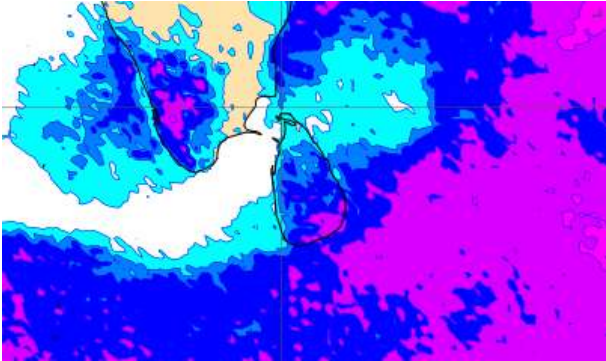
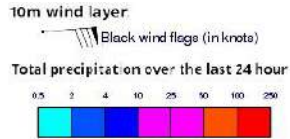
Wind Gust (m/s)



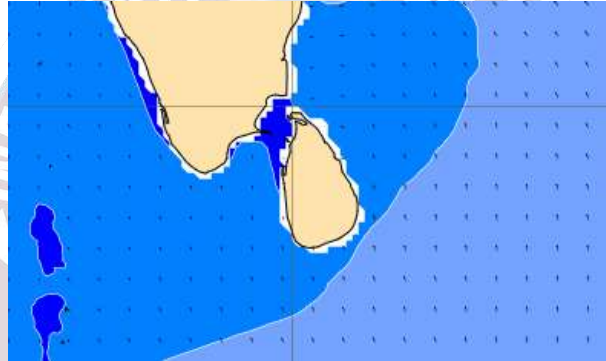
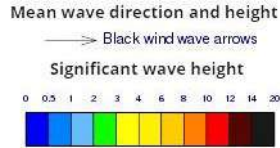
Showers or thundershowers will occur at several places in the sea areas off the coast extending from Kankasanthurai to Galle via Trincomalee and Batticaloa.

Wind speed will be 20-30 kmph in the sea areas around the island.

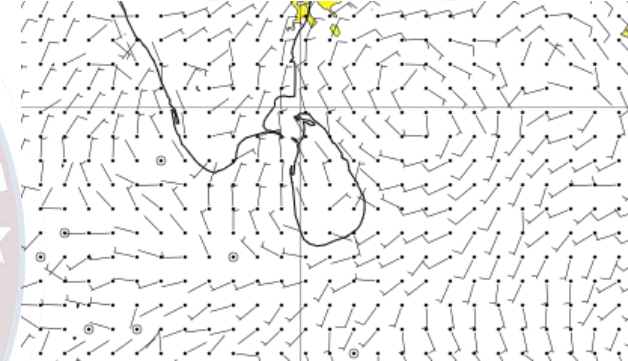
Wind and Rainfall Forecast (Total precipitation for 24 hrs)



Significant wave height (in meters)



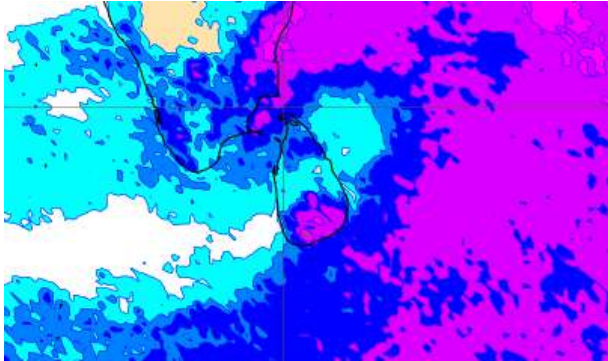
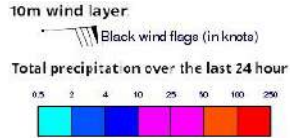
Wind Gust (m/s)



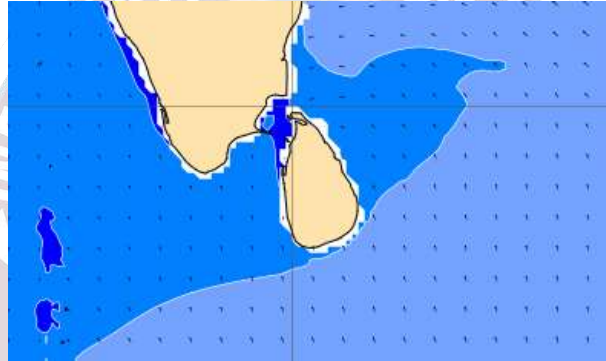
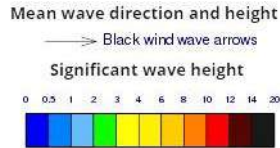
Showers or thundershowers will occur at several places in the sea areas off the coast extending from Kankasanthurai to Galle via Trincomalee and Batticaloa.

Wind speed will be 20-30 kmph in the sea areas around the island.

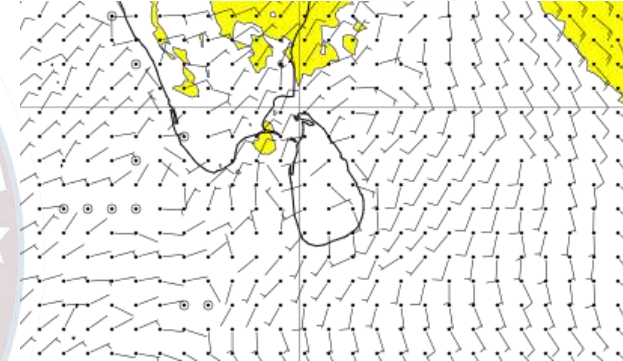
Wind and Rainfall Forecast (Total precipitation for 24 hrs)



Significant wave height (in meters)



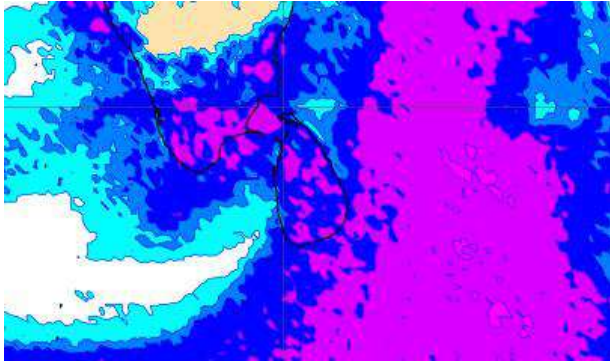
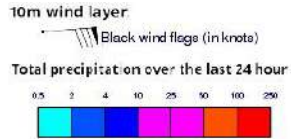
Wind Gust (m/s)



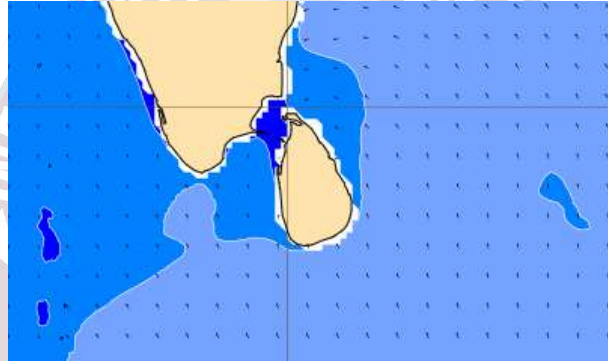
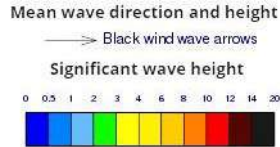
Showers or thundershowers will occur at several places in the sea areas around the island particularly during afternoon or night.

Wind speed will be 20-30 kmph in the sea areas around the island.

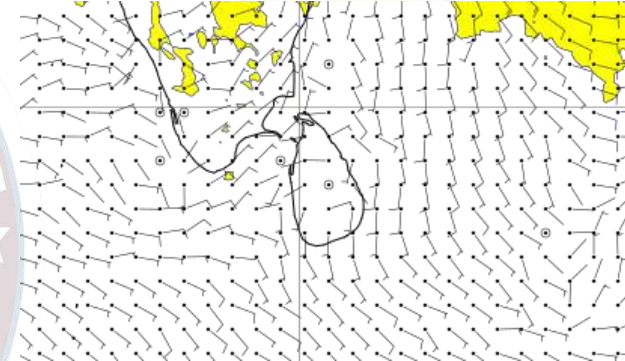
Wind and Rainfall Forecast (Total precipitation for 24 hrs)



Significant wave height (in meters)



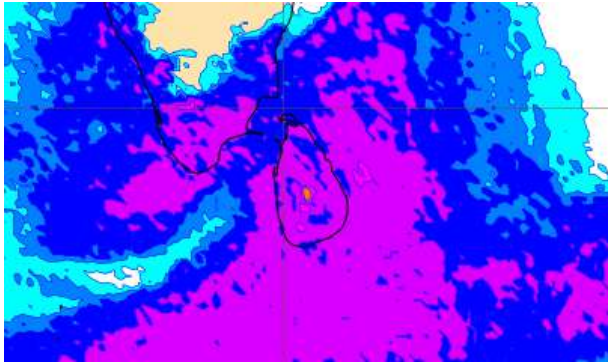
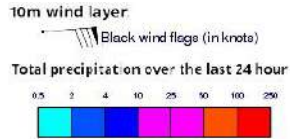
Wind Gust (m/s)



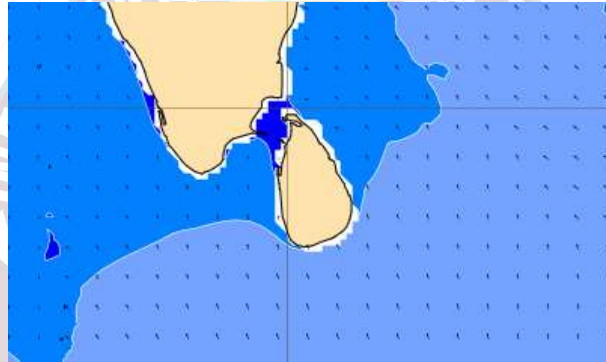
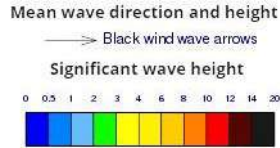
Showers or thundershowers will occur at several places in the sea areas around the island particularly during afternoon or night.

Wind speed will be 20-30 kmph in the sea areas around the island.

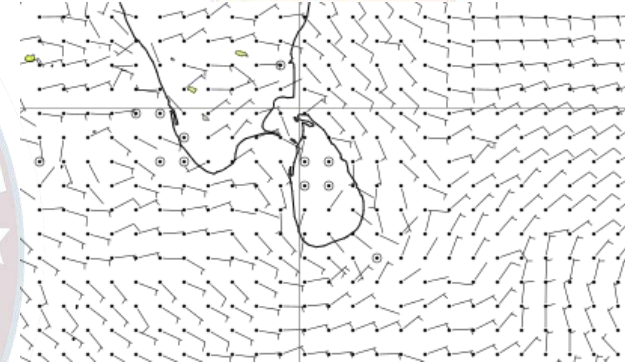
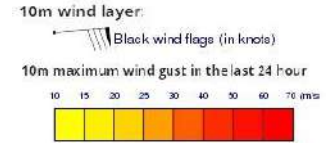
Wind and Rainfall Forecast (Total precipitation for 24 hrs)



Significant wave height (in meters)



Wind Gust (m/s)



Showers or thundershowers will occur at several places in the sea areas around the island particularly during afternoon or night.

Wind speed will be 20-30 kmph in the sea areas around the island.



Thank you!