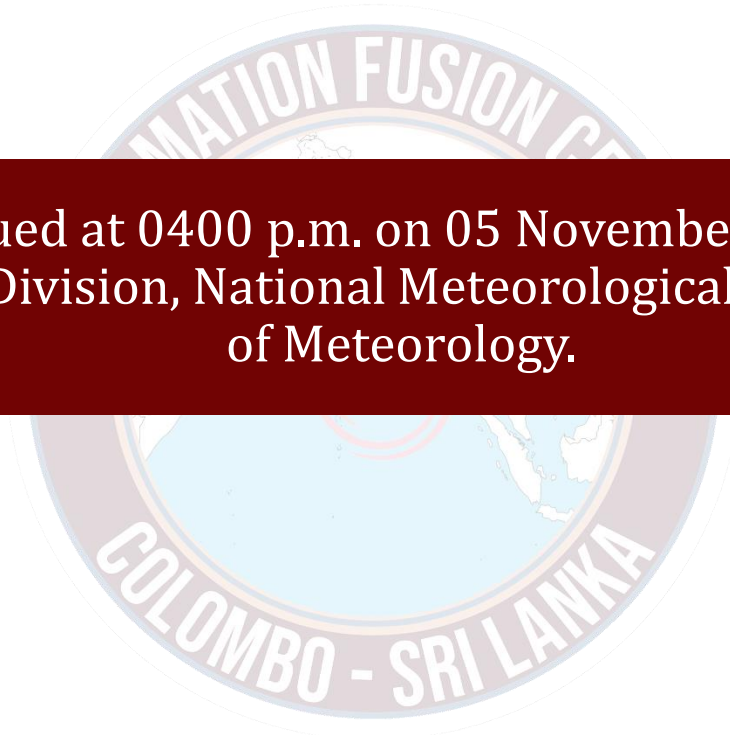




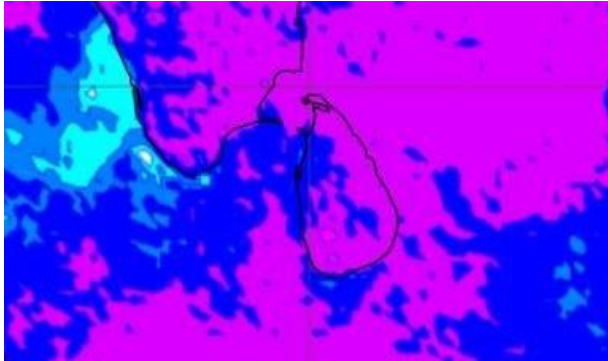
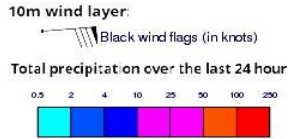
INFORMATION FUSION CENTRE COLOMBO

08 DAYS FORECAST FOR COASTAL AREAS AROUND SRI LANKA

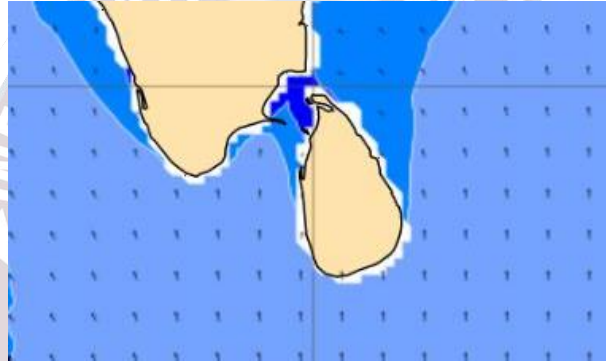
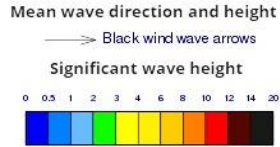


Issued at 0400 p.m. on 05 November 2023
Marine Weather Division, National Meteorological Centre, Department
of Meteorology.

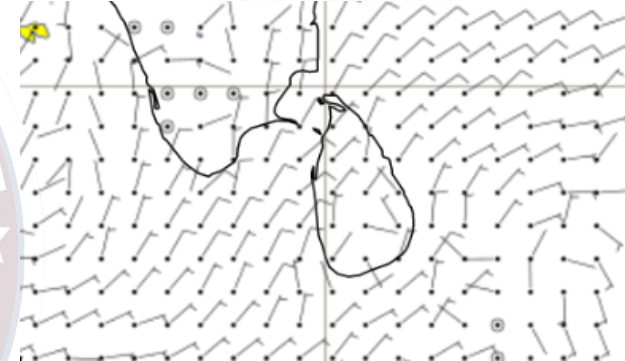
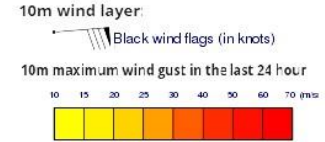
Wind and Rainfall Forecast (Total precipitation for 24 hrs)



Significant wave height (in meters)



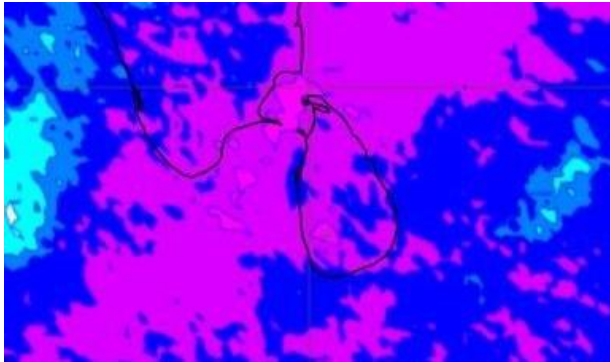
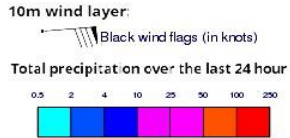
Wind Gust (m/s)



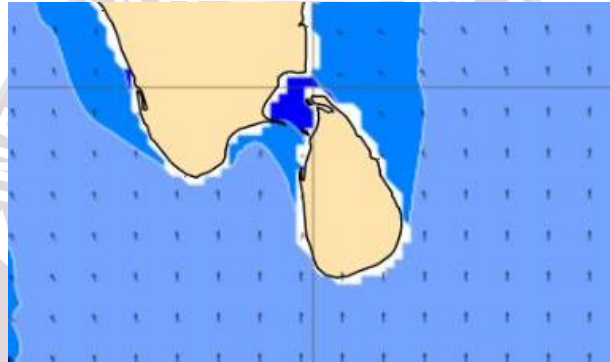
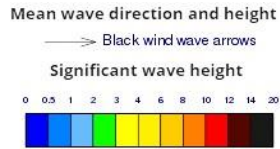
Showers or thundershowers will occur at several places in sea areas around the Island particularly during the afternoon or night.

Wind speed will be 20-30 kmph in the sea areas around the island.

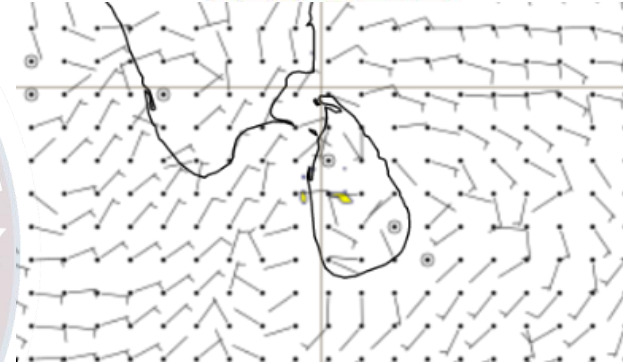
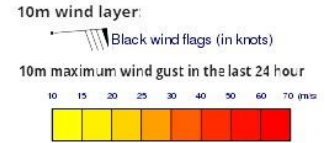
Wind and Rainfall Forecast (Total precipitation for 24 hrs)



Significant wave height (in meters)



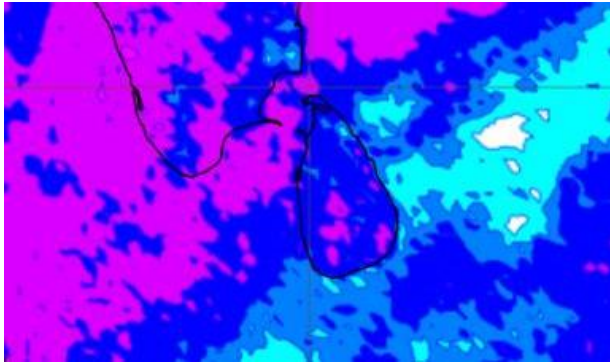
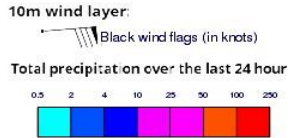
Wind Gust (m/s)



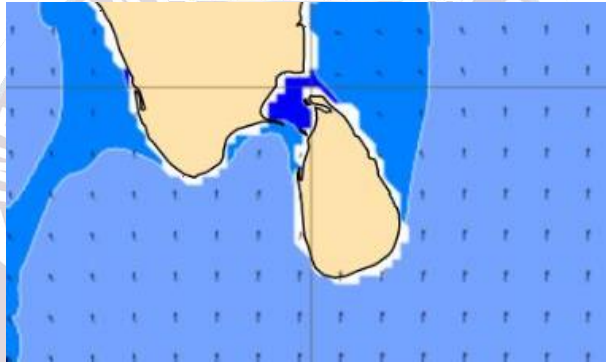
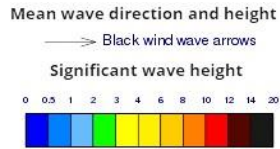
Showers or thundershowers will occur at several places in sea areas around the Island particularly during the afternoon or night.

Wind speed will be 20-30 kmph in the sea areas around the island.

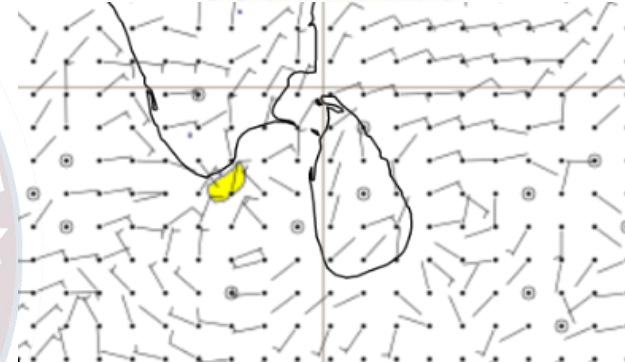
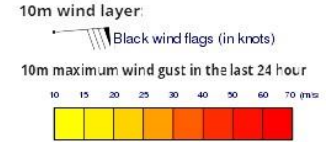
Wind and Rainfall Forecast (Total precipitation for 24 hrs)



Significant wave height (in meters)



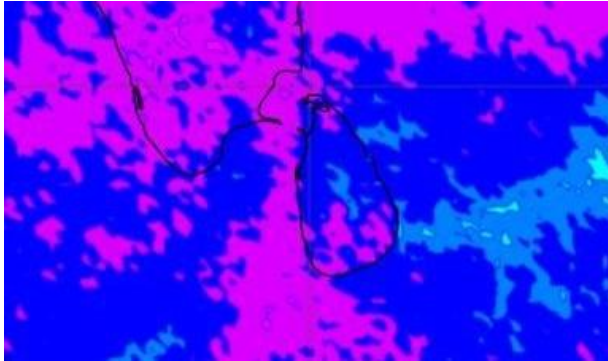
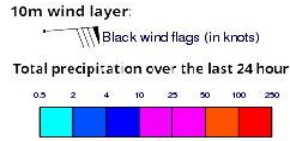
Wind Gust (m/s)



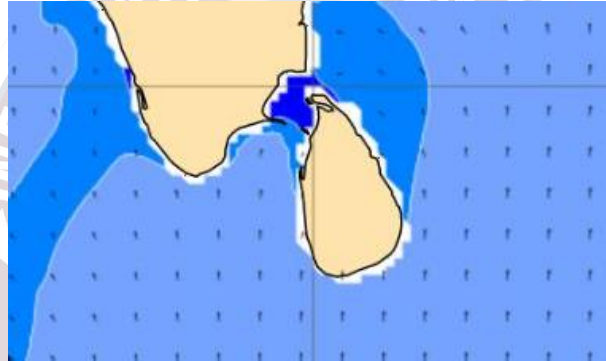
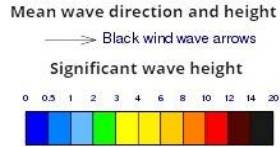
Showers or thundershowers will occur at several places in sea areas around the Island particularly during the afternoon or night.

Wind speed will be 20-30 kmph in the sea areas around the island.

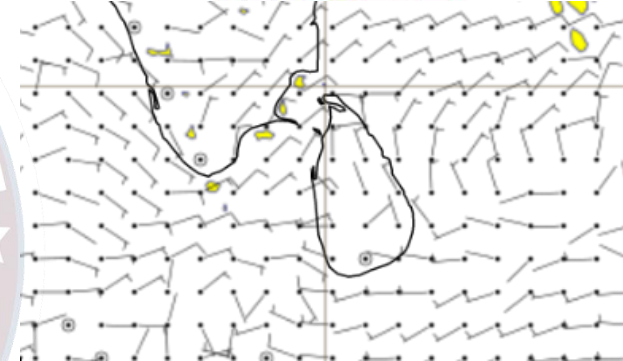
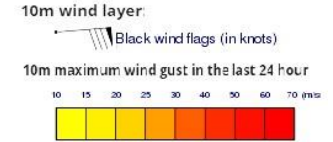
Wind and Rainfall Forecast (Total precipitation for 24 hrs)



Significant wave height (in meters)



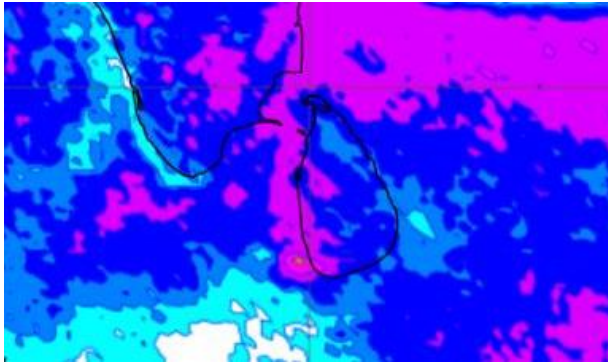
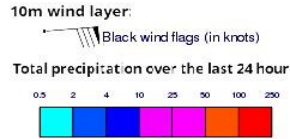
Wind Gust (m/s)



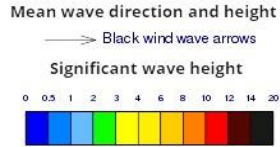
Showers or thundershowers will occur at several places in sea areas around the Island particularly during the afternoon or night.

Wind speed will be 20-30 kmph in the sea areas around the island.

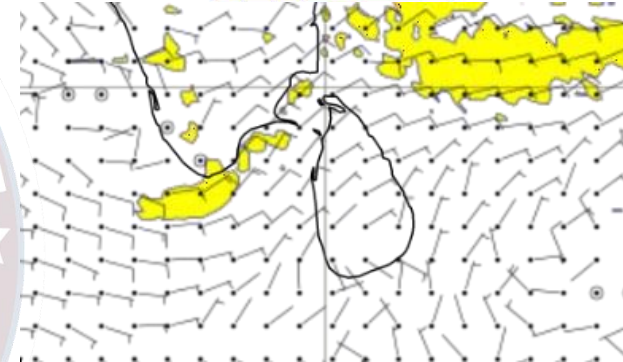
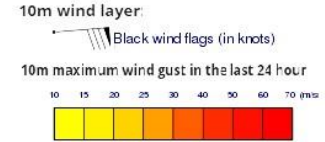
Wind and Rainfall Forecast (Total precipitation for 24 hrs)



Significant wave height (in meters)



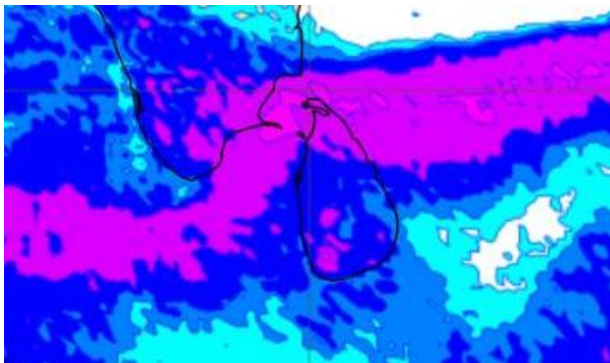
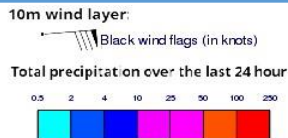
Wind Gust (m/s)



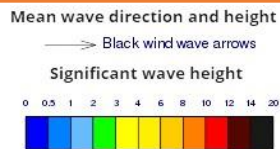
Showers or thundershowers will occur at several places in the sea areas off the coast extending from Mannar to Batticaloa via Kankasanturai and Trincomalee. Showers or thundershowers will occur at several places in other sea areas around the Island particularly during the afternoon or night.

Wind speed will be 25-35 kmph in the sea areas around the island.

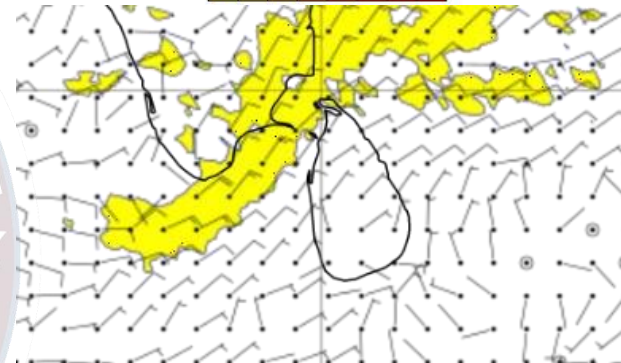
Wind and Rainfall Forecast (Total precipitation for 24 hrs)



Significant wave height (in meters)



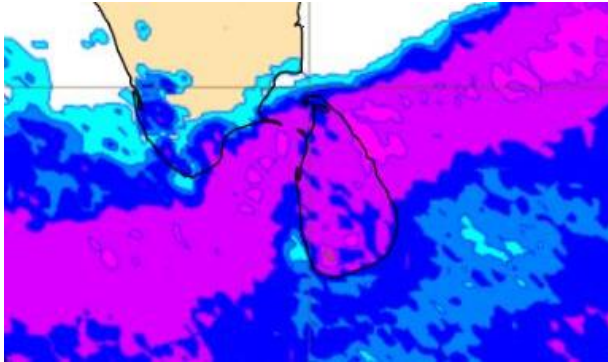
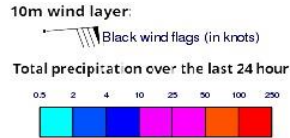
Wind Gust (m/s)



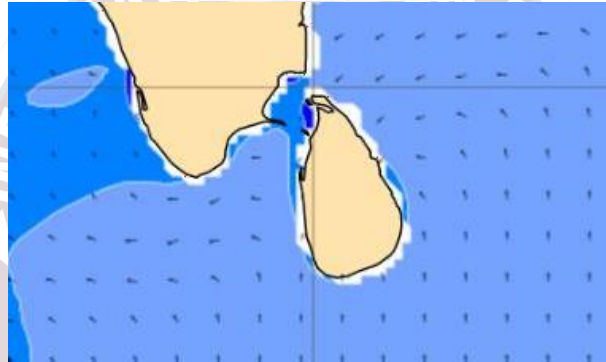
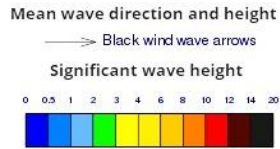
Showers or thundershowers will occur at several places in the sea areas off the coast extending from Kankasanturai to Batticaloa via Trincomalee. Showers or thundershowers will occur at several places in other sea areas around the Island particularly during the afternoon or night.

Wind speed will be 25-35 kmph in the sea areas around the island. The sea area extending from Puttalam to Kankasanturai via Mannar can be fairly rough at times as the wind speed may increase up to 45 kmph at times.

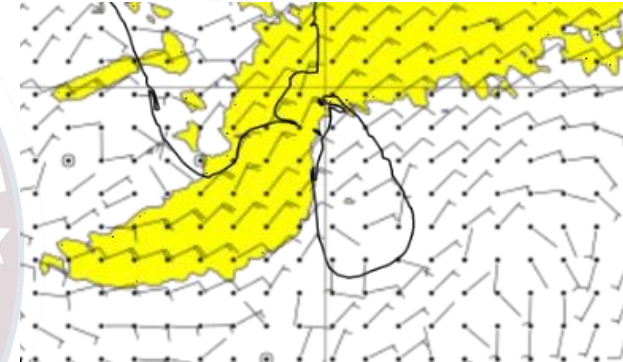
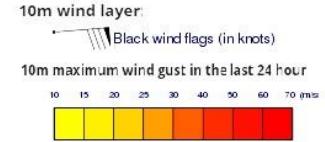
Wind and Rainfall Forecast (Total precipitation for 24 hrs)



Significant wave height (in meters)



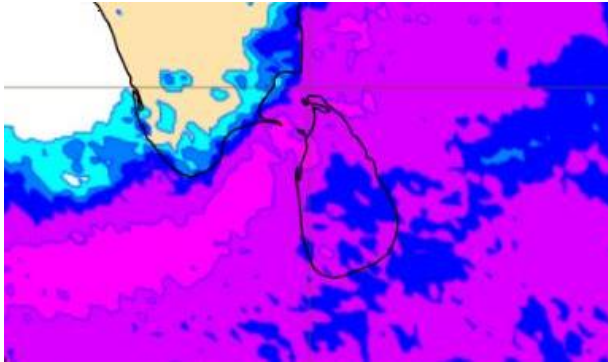
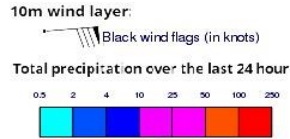
Wind Gust (m/s)



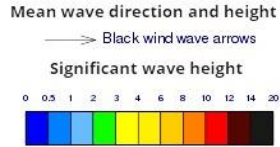
Showers or thundershowers will occur at several places in the sea areas off the coast extending from Mannar to Batticaloa via Kankasanturai and Trincomalee. Showers or thundershowers will occur at several places in other sea areas around the Island particularly during the afternoon or night.

Wind speed will be 25-35 kmph in the sea areas around the island. The sea area extending from Puttalam to Kankasanturai via Mannar can be fairly rough at times as the wind speed may increase up to 45 kmph at times.

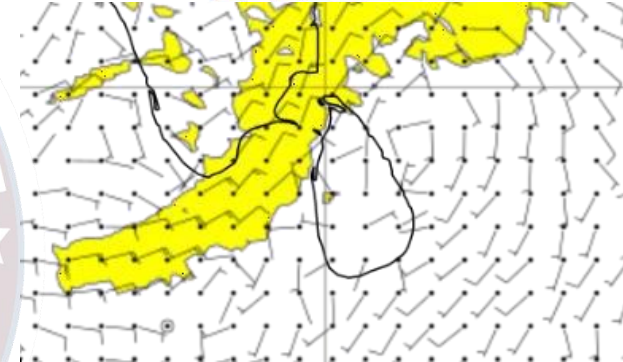
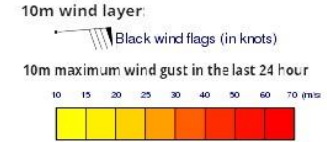
Wind and Rainfall Forecast (Total precipitation for 24 hrs)



Significant wave height (in meters)



Wind Gust (m/s)



Showers or thundershowers will occur at several places in sea areas around the Island.

Wind speed will be 25-35 kmph in the sea areas around the island. The sea area extending from Puttalam to Kankasanturai via Mannar can be fairly rough at times as the wind speed may increase up to 45 kmph at times.



Thank you!