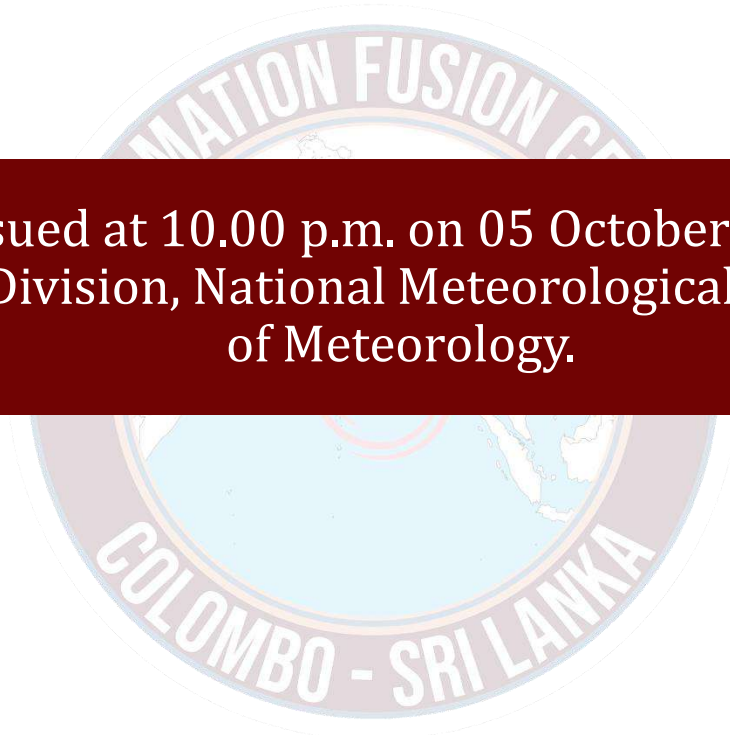




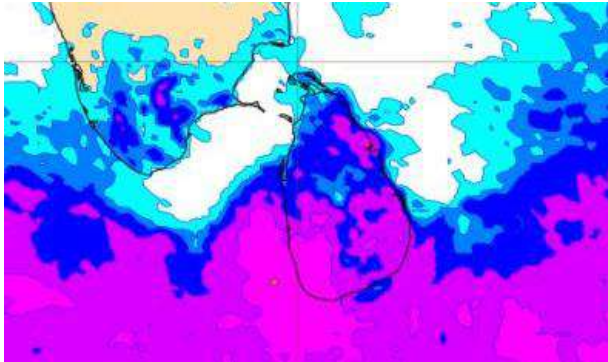
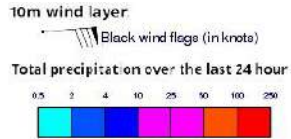
INFORMATION FUSION CENTRE COLOMBO

08 DAYS FORECAST FOR COASTAL AREAS AROUND SRI LANKA

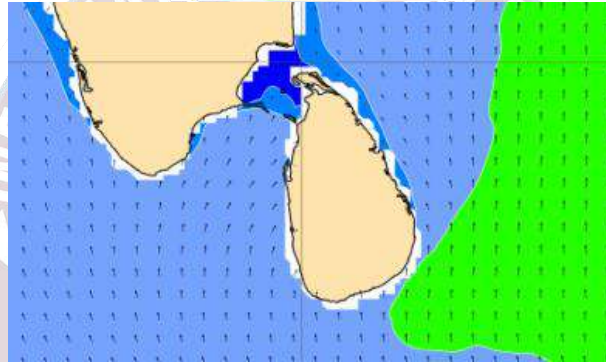
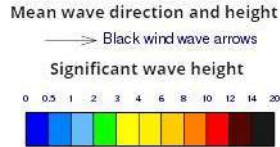


Issued at 10.00 p.m. on 05 October 2023
Marine Weather Division, National Meteorological Centre, Department
of Meteorology.

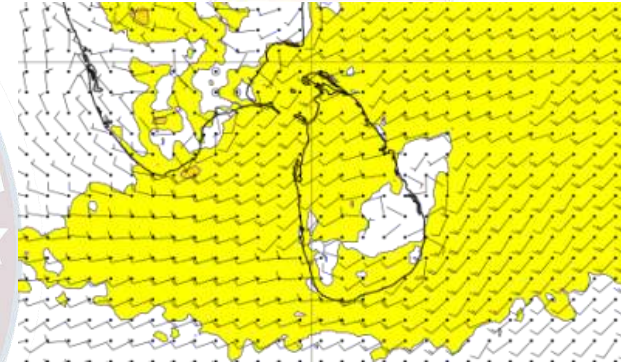
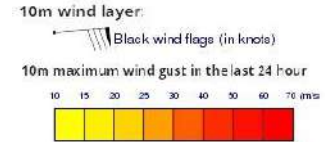
Wind and Rainfall Forecast (Total precipitation for 24 hrs)



Significant wave height (in meters)



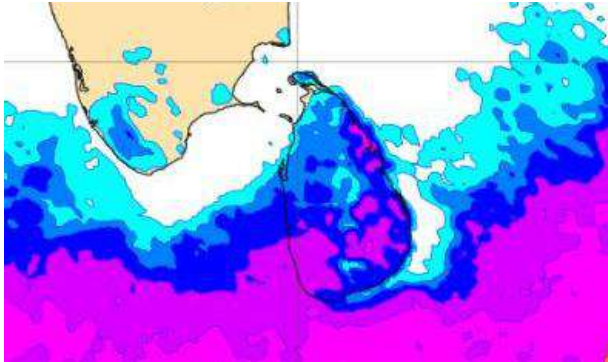
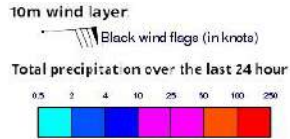
Wind Gust (m/s)



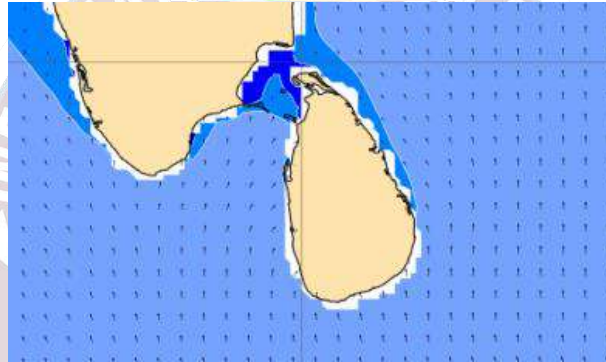
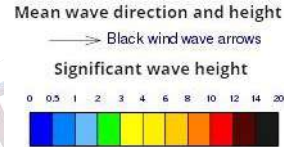
Showers or thundershowers will occur at times in the sea areas off the coast extending from Puttalam to Pottuvil via Colombo, Galle and Hambantota. Heavy showers can be expected at some places.

Wind speed will be 30-40 kmph in the sea areas around the island. The sea area extending from Puttalam to Kankasanturai via Mannar and from Hambantota to Pottuvil can be rough at times as the wind speed may increase up to 50-55 kmph at times

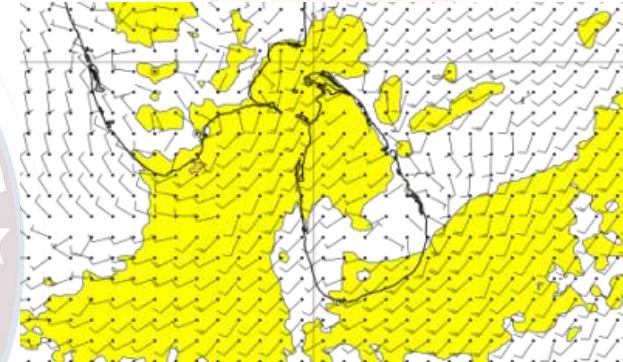
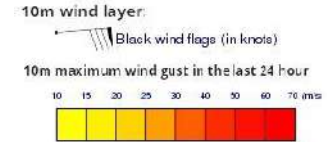
Wind and Rainfall Forecast (Total precipitation for 24 hrs)



Significant wave height (in meters)



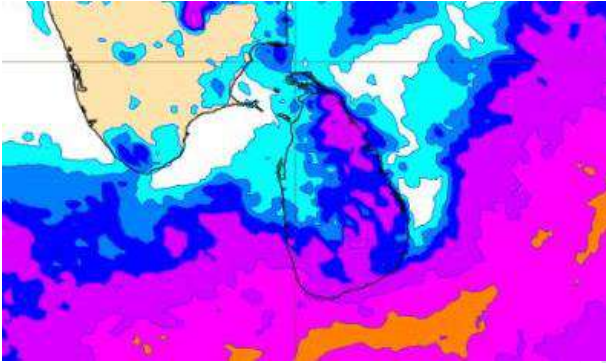
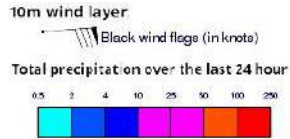
Wind Gust (m/s)



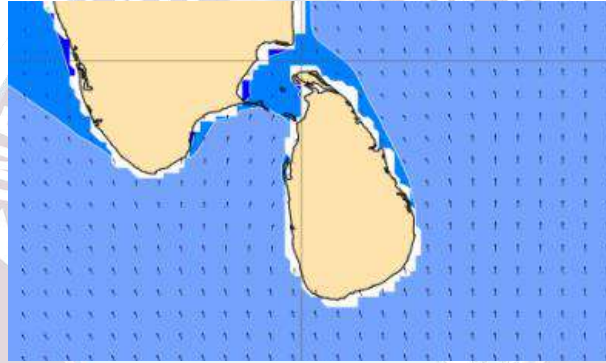
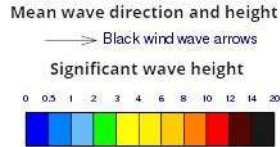
Showers or thundershowers will occur at several places in the sea areas off the coast extending from Puttalam to Pottuvil via Colombo, Galle and Hambantota.

Wind speed will be 30-40 kmph in the sea areas around the island. The sea area extending from Puttalam to Kankasanturai via Mannar and from Hambantota to Pottuvil can be rough at times as the wind speed may increase up to 50-55 kmph at times

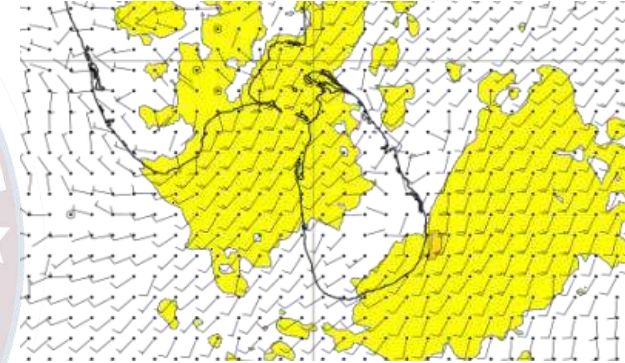
Wind and Rainfall Forecast (Total precipitation for 24 hrs)



Significant wave height (in meters)



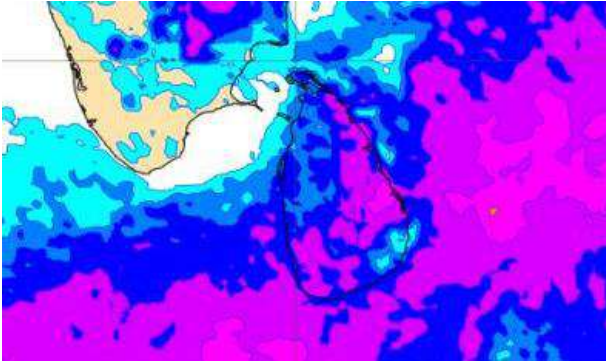
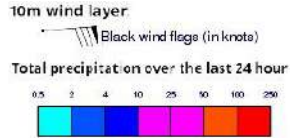
Wind Gust (m/s)



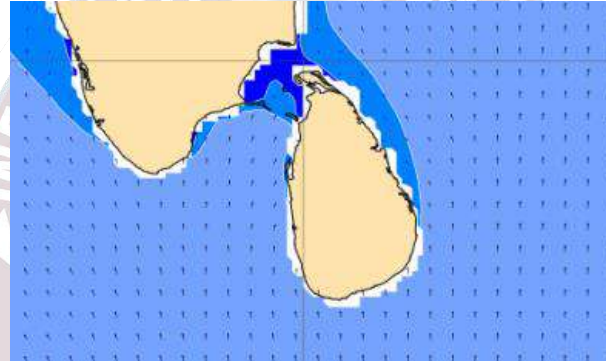
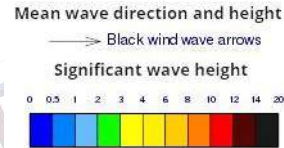
Showers or thundershowers will occur at several places in the sea areas off the coast extending from Puttalam to Pottuvil via Colombo, Galle and Hambantota.

Wind speed will be 25-35 kmph in the sea areas around the island. The sea area extending from Puttalam to Kankasanturai via Mannar and from Hambantota to Pottuvil can be rough at times as the wind speed may increase up to 50 kmph at times.

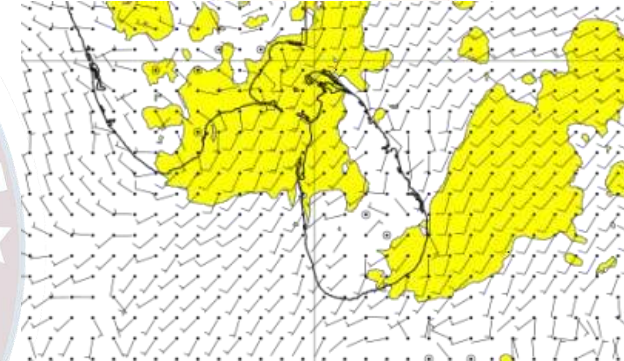
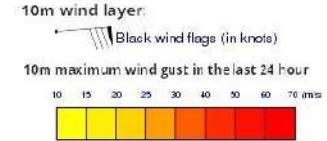
Wind and Rainfall Forecast (Total precipitation for 24 hrs)



Significant wave height (in meters)



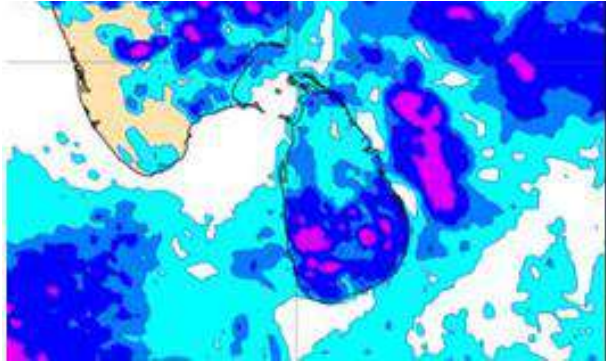
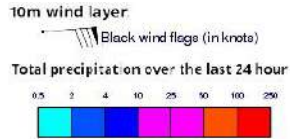
Wind Gust (m/s)



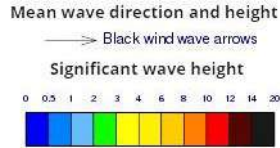
Showers or thundershowers will occur at several places in the sea areas off the coast extending from Puttalam to Pottuvil via Colombo, Galle and Hambantota.

Wind speed will be 25-35 kmph in the sea areas around the island. The sea area extending from Puttalam to Kankasanturai via Mannar and from Hambantota to Pottuvil can be rough at times as the wind speed may increase up to 50 kmph at times.

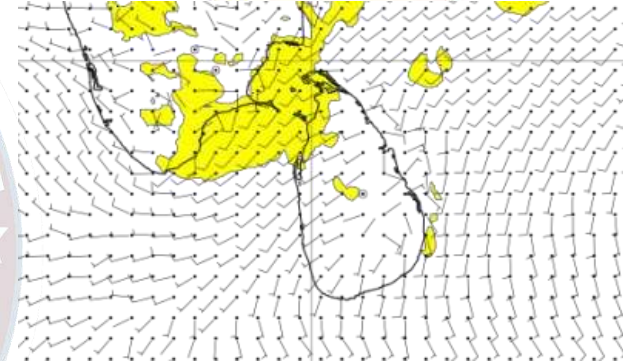
Wind and Rainfall Forecast (Total precipitation for 24 hrs)



Significant wave height (in meters)



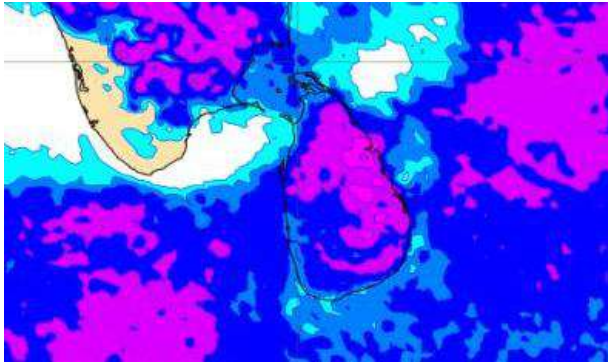
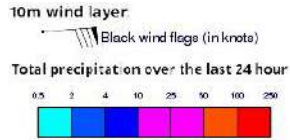
Wind Gust (m/s)



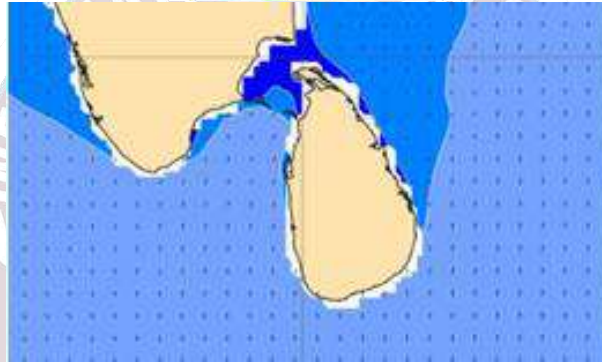
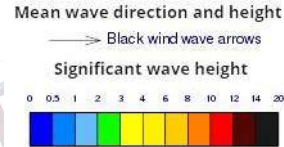
Showers or thundershowers may occur at a few places in the sea areas off the coast extending from Puttalam to Hambantota via Colombo, Galle and Matara.

Wind speed will be 25-35 kmph in the sea areas around the island. The sea area extending from Puttalam to Kankasanturai via Mannar can be fairly rough at times as the wind speed may increase up to 45-50 kmph at times

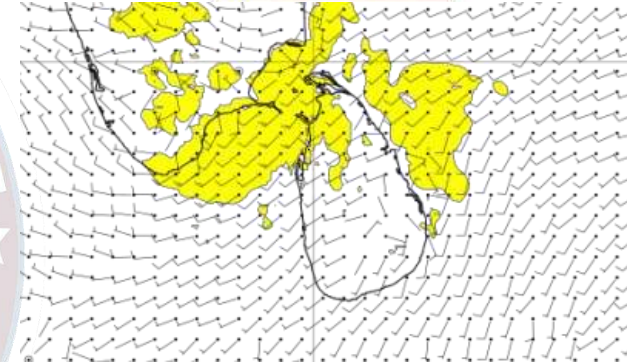
Wind and Rainfall Forecast (Total precipitation for 24 hrs)



Significant wave height (in meters)



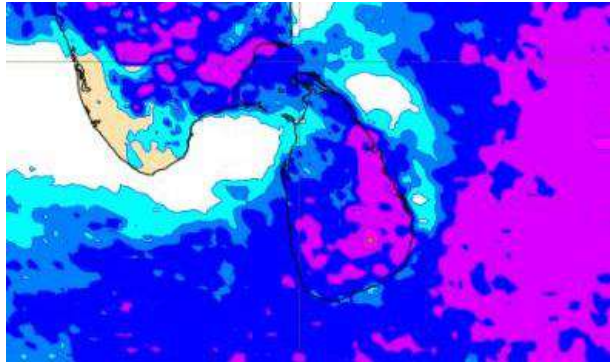
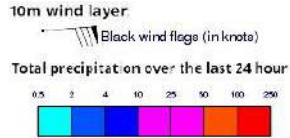
Wind Gust (m/s)



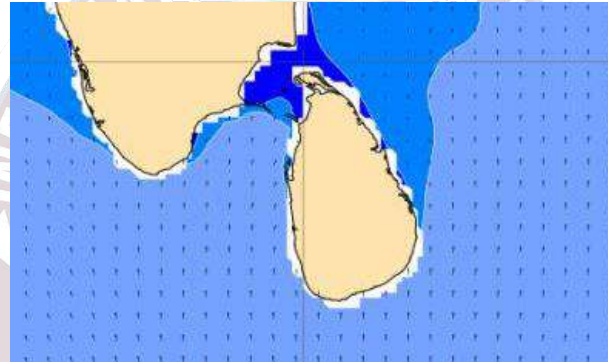
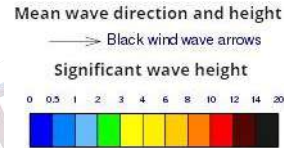
Showers or thundershowers may occur at a few places in the sea areas off the coast extending from Puttalam to Hambantota via Colombo, Galle and Matara.

Wind speed will be 25-35 kmph in the sea areas around the island. The sea area extending from Puttalam to Kankasanturai via Mannar can be fairly rough at times as the wind speed may increase up to 40 kmph at times.

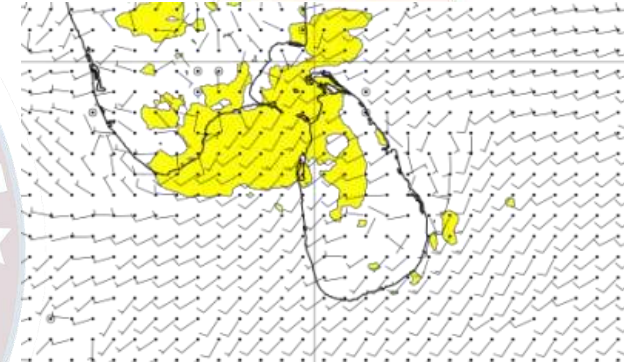
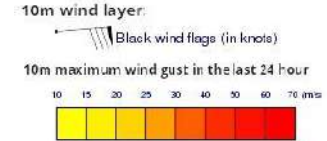
Wind and Rainfall Forecast (Total precipitation for 24 hrs)



Significant wave height (in meters)



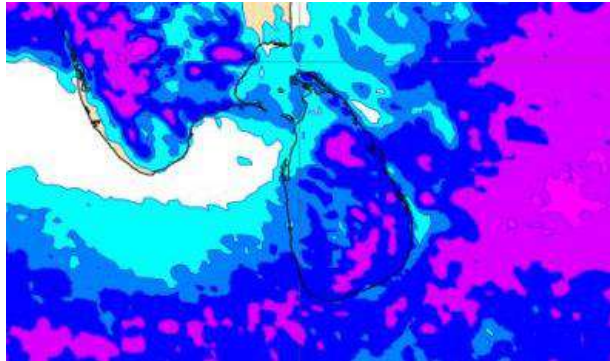
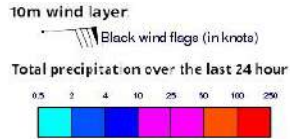
Wind Gust (m/s)



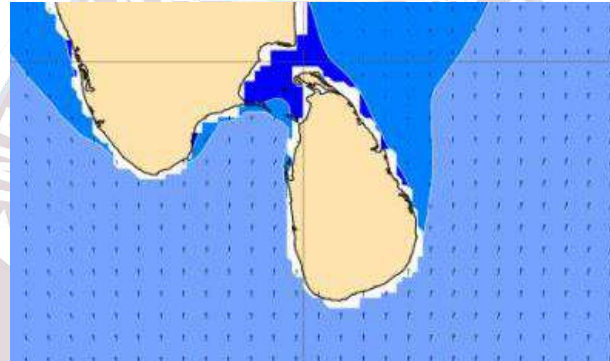
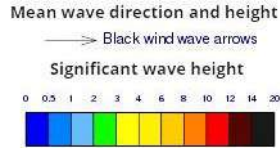
Showers or thundershowers may occur at a few places in the sea areas off the coast extending from Puttalam to Hambantota via Colombo, Galle and Matara.

Wind speed will be 25-35 kmph in the sea areas around the island. The sea area extending from Puttalam to Kankasanturai via Mannar can be fairly rough at times as the wind speed may increase up to 40 kmph at times.

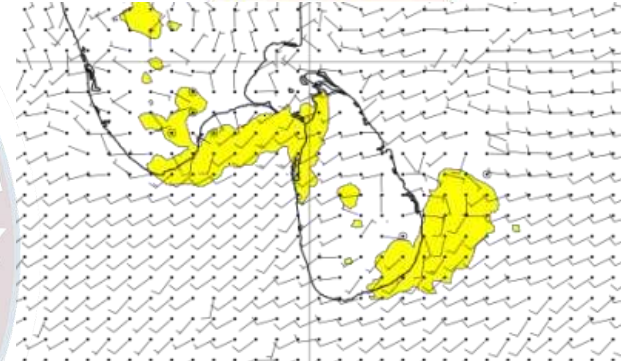
Wind and Rainfall Forecast (Total precipitation for 24 hrs)



Significant wave height (in meters)



Wind Gust (m/s)



Showers or thundershowers may occur at a few places in the sea areas off the coast extending from Puttalam to Hambantota via Colombo, Galle and Matara.

Wind speed will be 25-35 kmph in the sea areas around the island. The sea area extending from Puttalam to Kankasanturai via Mannar can be fairly rough at times as the wind speed may increase up to 45 kmph at times.



Thank you!