



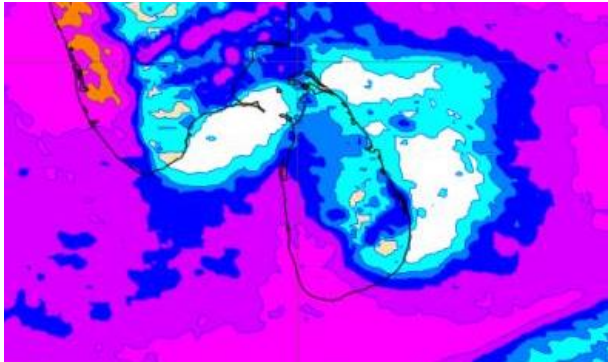
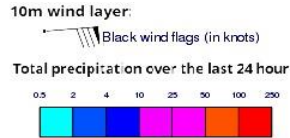
# **INFORMATION FUSION CENTRE COLOMBO**

**08 DAYS FORECAST FOR COASTAL AREAS AROUND SRI LANKA**

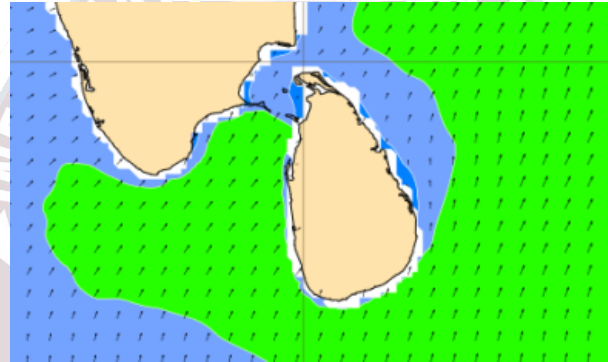
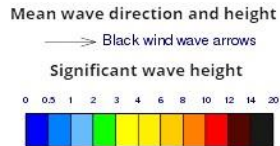


Issued at 10.00 p.m. on 27<sup>th</sup> September 2023 Marine Weather  
Division, National Meteorological Centre, Department of Meteorology.

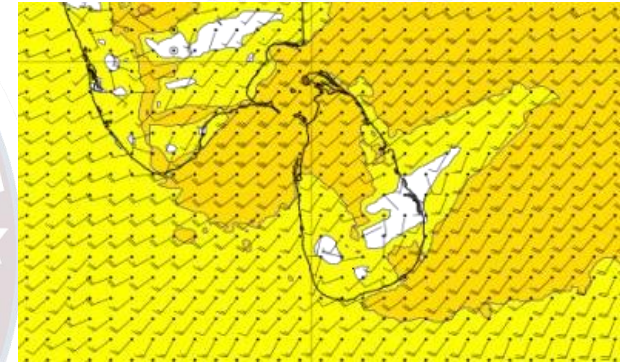
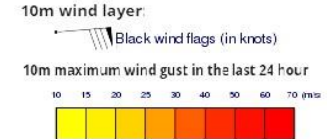
## Wind and Rainfall Forecast (Total precipitation for 24 hrs)



## Significant wave height (in meters)



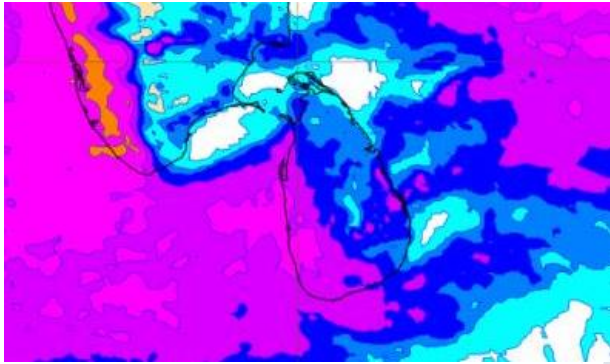
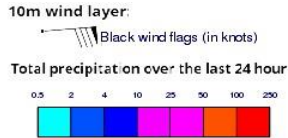
## Wind Gust (m/s)



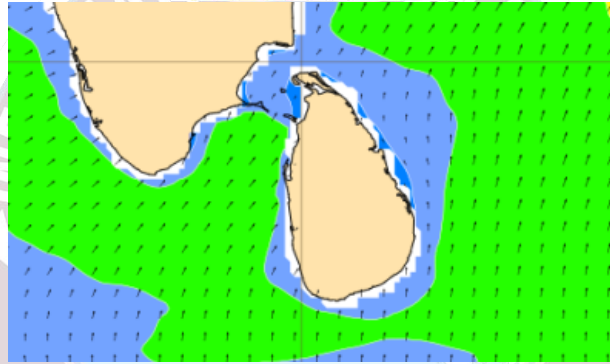
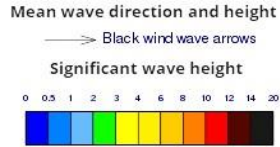
Showers or thundershowers will occur at several places in the sea areas off the coast extending from Puttalam to Hambantota via Colombo, Galle and Matara.

Wind speed will be 30-40 kmph in the sea areas around the island. The sea area extending from Puttalam to Kankasanturai via Mannar and from Hambantota to Pottuvil can be rough at times as the wind speed may increase up to 50-60 kmph at times. The sea areas off the coast extending from Puttalam to Hambantota via Colombo and Galle can be fairly rough at times as the wind speed may increase up to 50 kmph at times

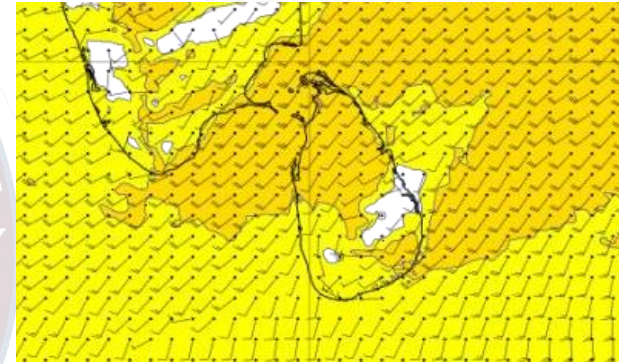
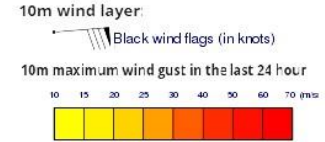
## Wind and Rainfall Forecast (Total precipitation for 24 hrs)



## Significant wave height (in meters)



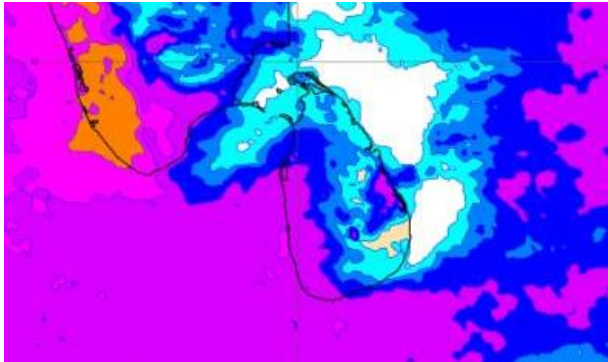
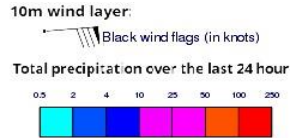
## Wind Gust (m/s)



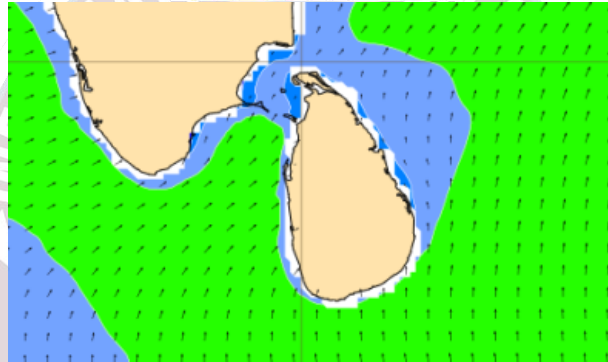
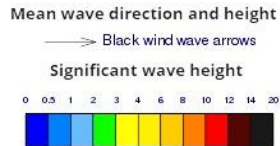
Showers or thundershowers will occur at several places in the sea areas off the coast extending from Puttalam to Hambantota via Colombo, Galle and Matara.

Wind speed will be 30-40 kmph in the sea areas around the island. The sea area extending from Puttalam to Kankasanturai via Mannar and from Hambantota to Pottuvil can be rough at times as the wind speed may increase up to 50-60 kmph at times. The sea areas off the coast extending from Puttalam to Hambantota via Colombo and Galle can be fairly rough at times as the wind speed may increase up to 50 kmph at times.

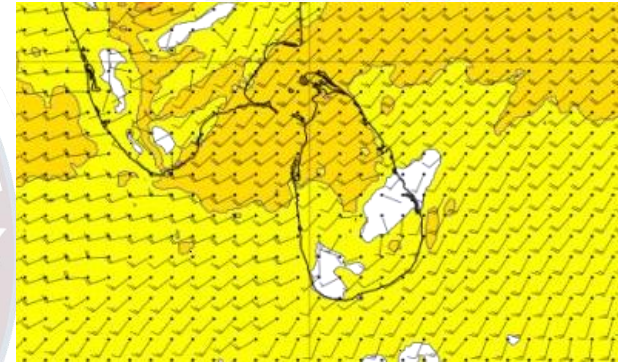
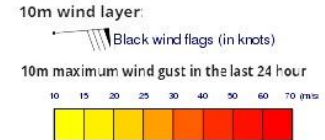
## Wind and Rainfall Forecast (Total precipitation for 24 hrs)



## Significant wave height (in meters)



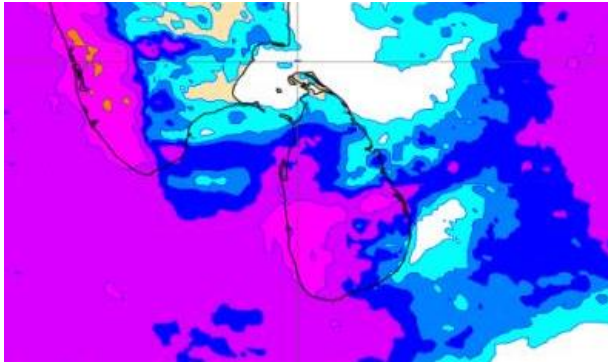
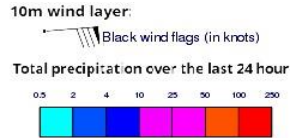
## Wind Gust (m/s)



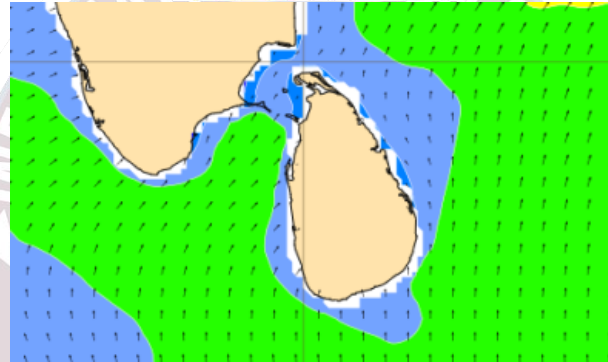
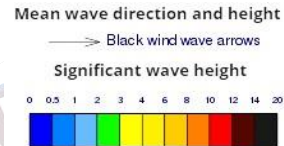
Showers or thundershowers will occur at several places in the sea areas off the coast extending from Puttalam to Hambantota via Colombo, Galle and Matara.

Wind speed will be 25-35 kmph in the sea areas around the island. The sea area extending from Colombo to Kankasanturai via Puttalam and Mannar can be rough at times as the wind speed may increase up to 45-55 kmph at times.

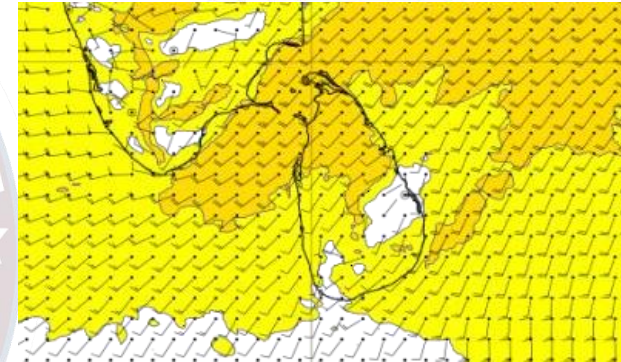
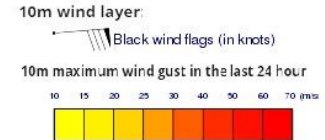
## Wind and Rainfall Forecast (Total precipitation for 24 hrs)



## Significant wave height (in meters)



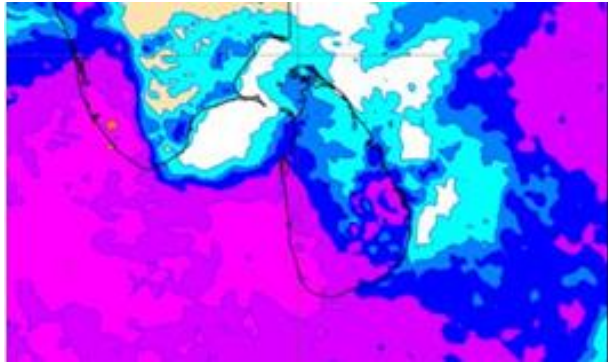
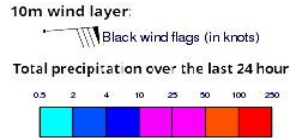
## Wind Gust (m/s)



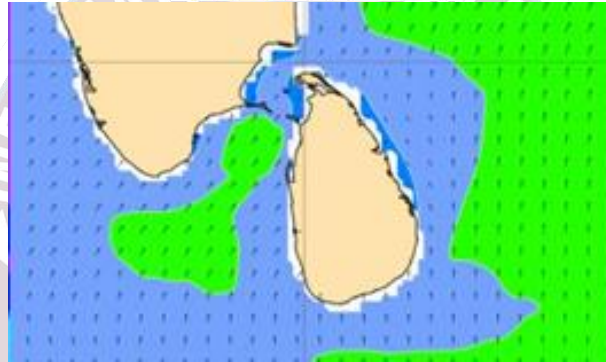
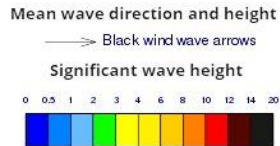
Showers or thundershowers will occur at several places in the sea areas off the coast extending from Puttalam to Hambantota via Colombo, Galle and Matara.

Wind speed will be 25-35 kmph in the sea areas around the island. The sea area extending from Puttalam to Kankasanturai via Mannar can be rough at times as the wind speed may increase up to 45-55 kmph at times.

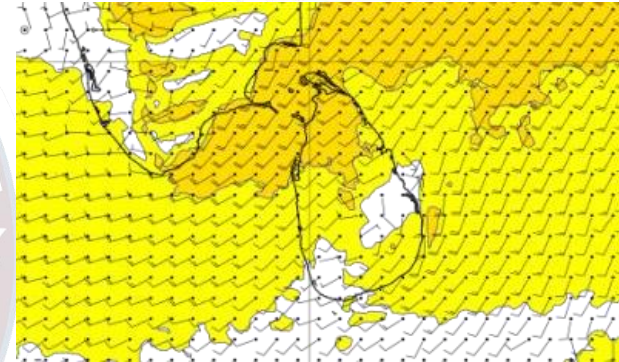
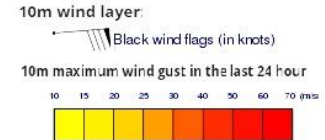
## Wind and Rainfall Forecast (Total precipitation for 24 hrs)



## Significant wave height (in meters)



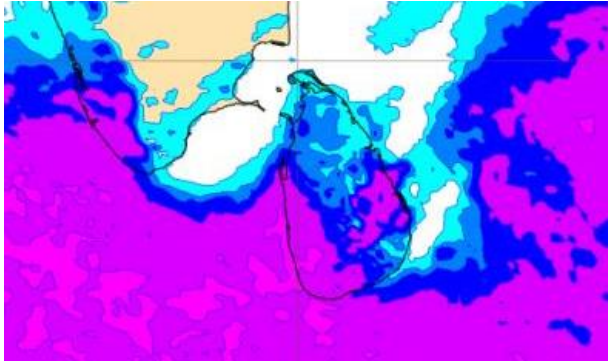
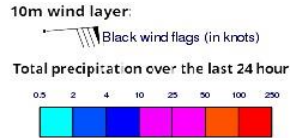
## Wind Gust (m/s)



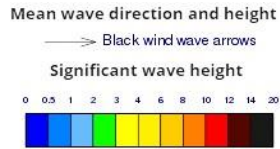
Showers or thundershowers will occur at several places in the sea areas off the coast extending from Puttalam to Hambantota via Colombo, Galle and Matara.

Wind speed will be 25-35 kmph in the sea areas around the island. The sea area extending from Puttalam to Kankasanturai via Mannar can be rough at times as the wind speed may increase up to 45-55 kmph at times.

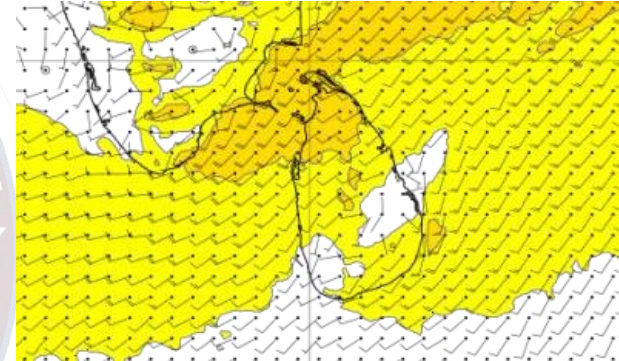
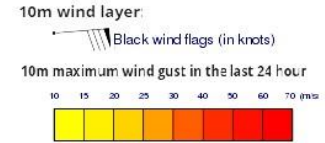
## Wind and Rainfall Forecast (Total precipitation for 24 hrs)



## Significant wave height (in meters)



## Wind Gust (m/s)

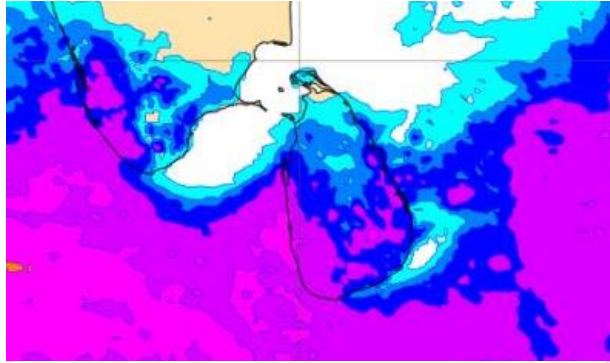
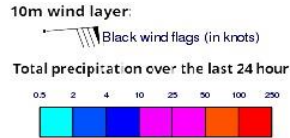


Showers or thundershowers will occur at several places in the sea areas off the coast extending from Puttalam to Hambantota via Colombo, Galle and Matara.

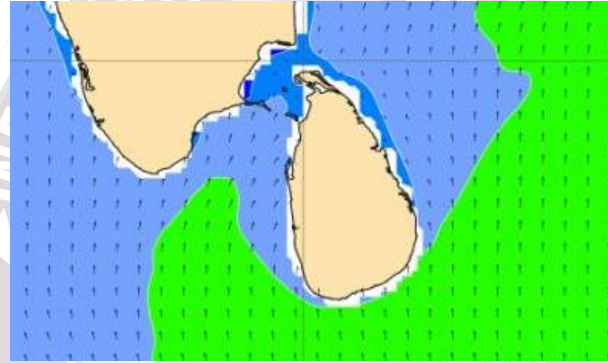
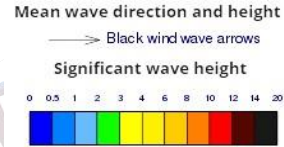
Wind speed will be 25-35 kmph in the sea areas around the island. The sea area extending from Puttalam to Kankasanturai via Mannar can be rough at times as the wind speed may increase up to 45-55 kmph at times.



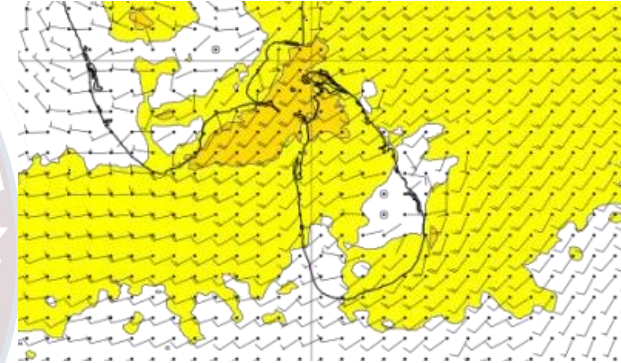
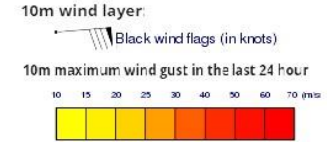
## Wind and Rainfall Forecast (Total precipitation for 24 hrs)



## Significant wave height (in meters)



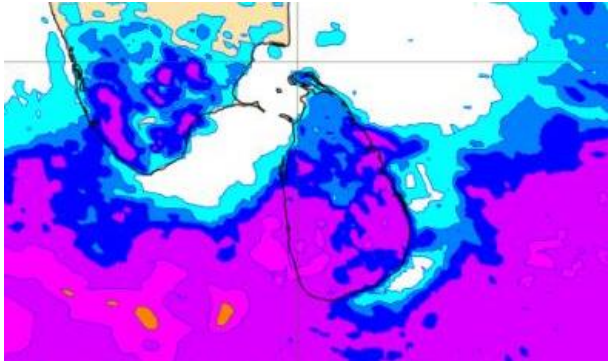
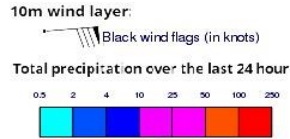
## Wind Gust (m/s)



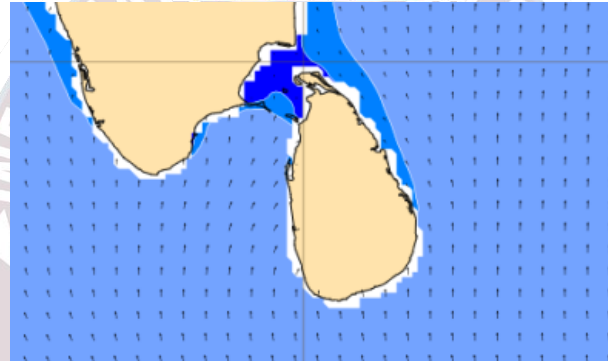
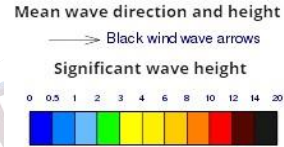
Showers or thundershowers will occur at several places in the sea areas off the coast extending from Puttalam to Hambantota via Colombo, Galle and Matara.

Wind speed will be 25-35 kmph in the sea areas around the island. The sea area extending from Puttalam to Kankasanturai via Mannar can be fairly rough at times as the wind speed may increase up to 45-50 kmph at times.

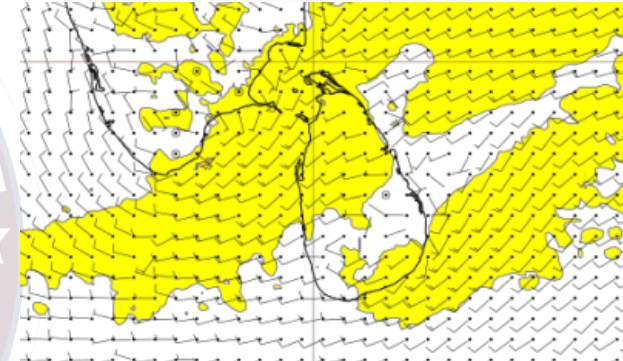
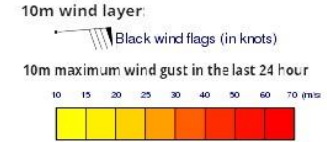
## Wind and Rainfall Forecast (Total precipitation for 24 hrs)



## Significant wave height (in meters)



## Wind Gust (m/s)



Showers or thundershowers will occur at several places in the sea areas off the coast extending from Puttalam to Hambantota via Colombo, Galle and Matara.

Wind speed will be 25-35 kmph in the sea areas around the island.



Thank you!