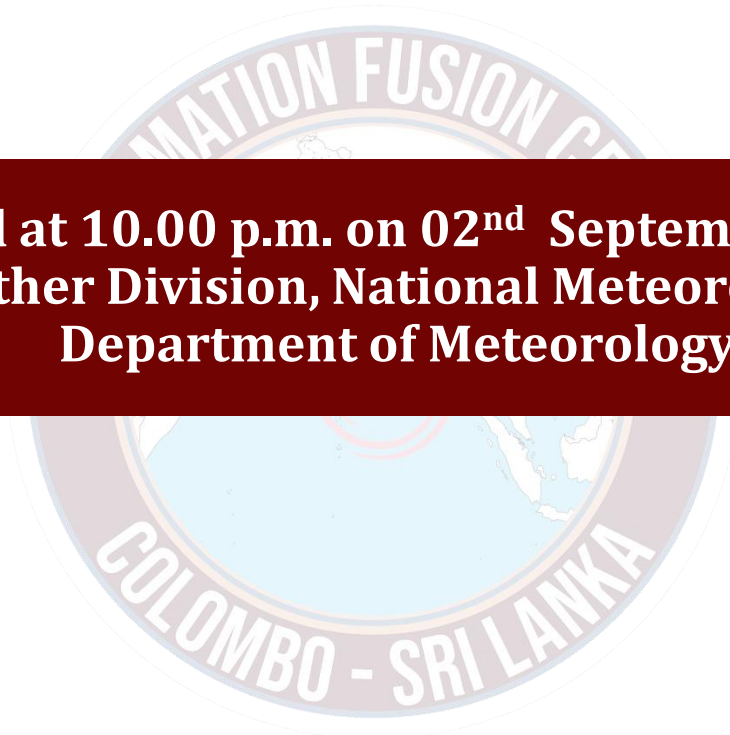




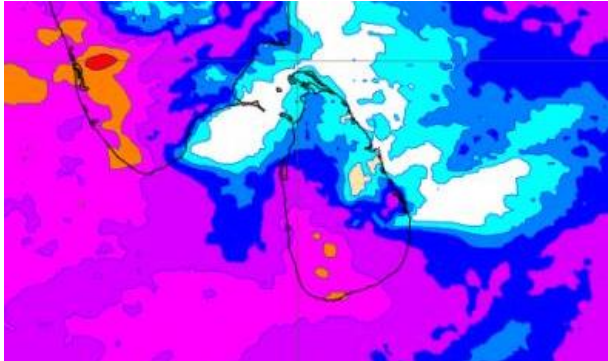
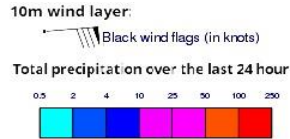
INFORMATION FUSION CENTRE COLOMBO

08 DAYS FORECAST FOR COASTAL AREAS AROUND SRI LANKA

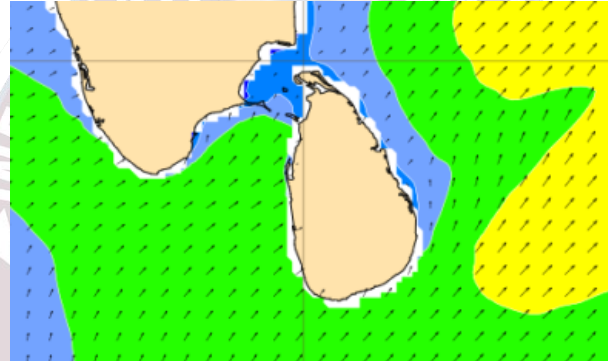
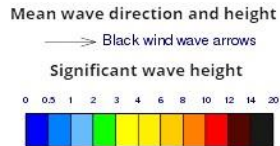


Issued at 10.00 p.m. on 02nd September 2023
Marine Weather Division, National Meteorological Centre,
Department of Meteorology.

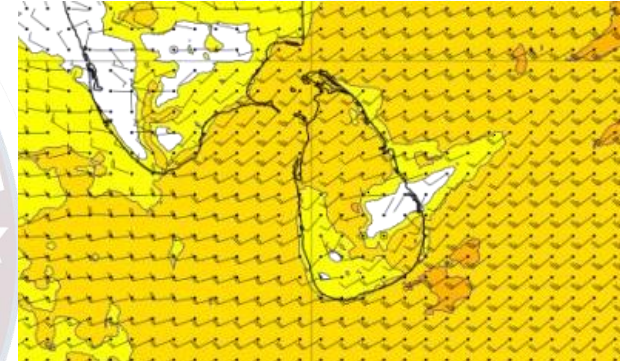
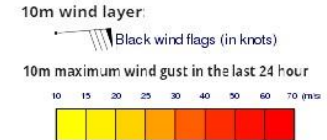
Wind and Rainfall Forecast (Total precipitation for 24 hrs)



Significant wave height (in meters)



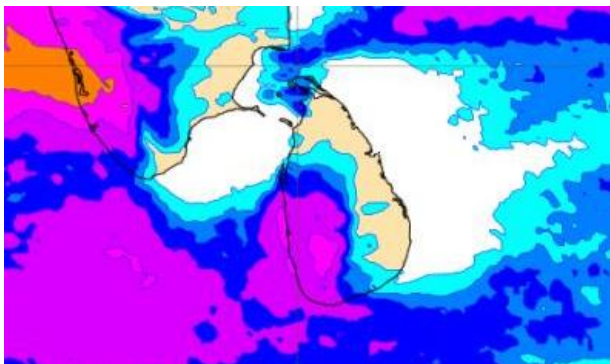
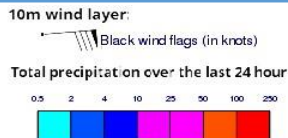
Wind Gust (m/s)



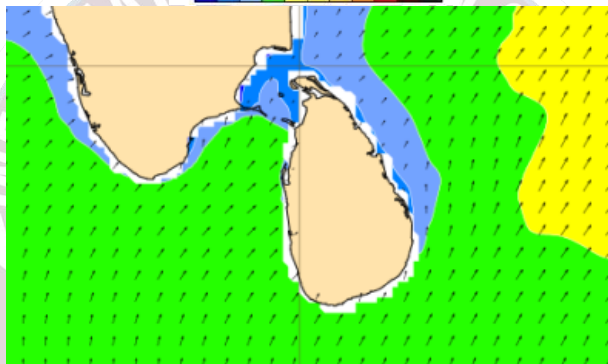
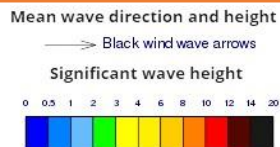
Showers or thundershowers may occur at times in the sea areas off the coast extending from Puttalam to Hambantota via Colombo, Galle and Matara.

Wind speed will be 30-40 kmph in the sea areas around the island. The sea area extending from Trincomalee to Pottuvil via Kankasanturai, Puttalam, Colombo, Galle and Hambantota can be rough at times as the wind speed may increase up to 50-60 kmph at times.

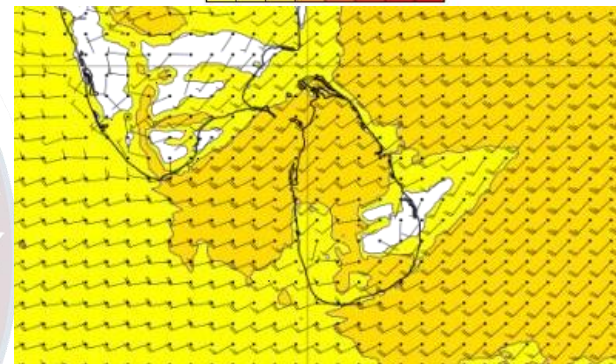
Wind and Rainfall Forecast (Total precipitation for 24 hrs)



Significant wave height (in meters)



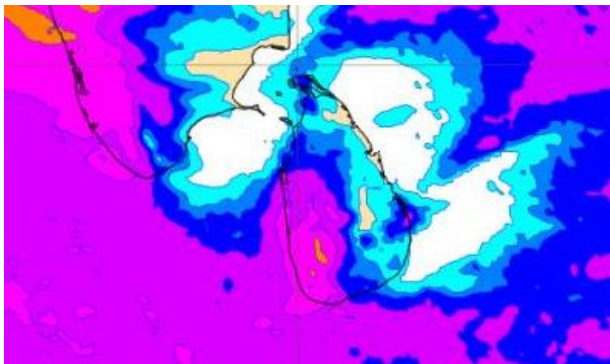
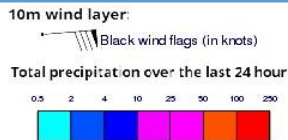
Wind Gust (m/s)



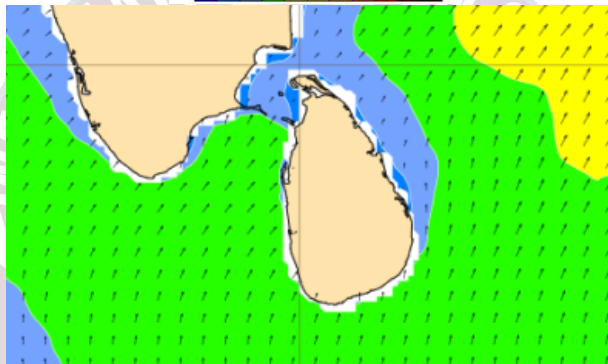
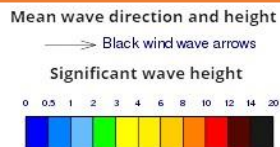
Showers or thundershowers may occur at times in the sea areas off the coast extending from Puttalam to Hambantota via Colombo, Galle and Matara.

Wind speed will be 30-40 kmph in the sea areas around the island. The sea area extending from Trincomalee to Pottuvil via Kankasanturai, Puttalam, Colombo, Galle and Hambantota can be rough at times as the wind speed may increase up to 50-60 kmph at times.

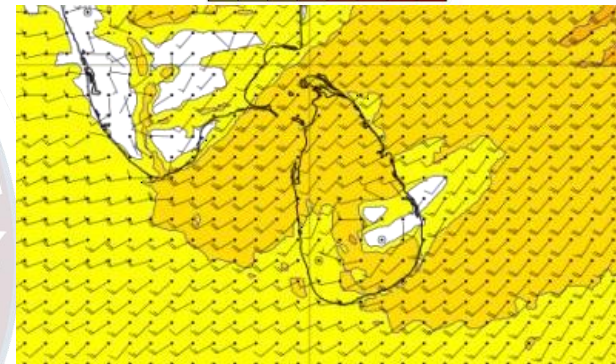
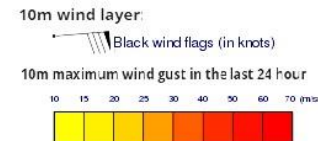
Wind and Rainfall Forecast (Total precipitation for 24 hrs)



Significant wave height (in meters)



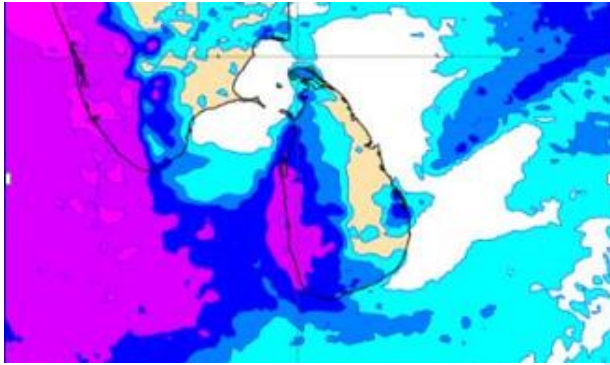
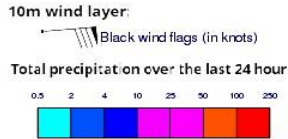
Wind Gust (m/s)



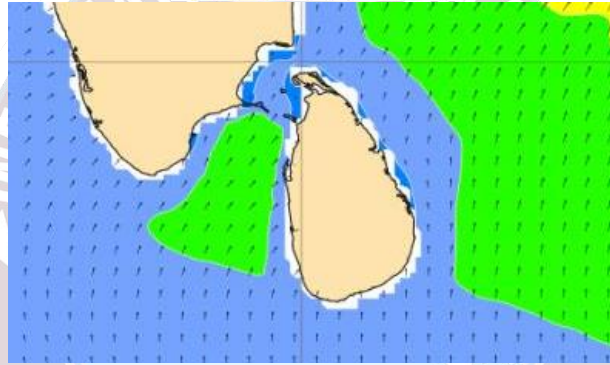
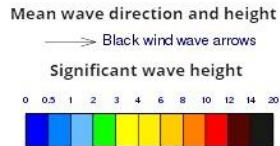
Showers or thundershowers may occur at times in the sea areas off the coast extending from Puttalam to Hambantota via Colombo, Galle and Matara.

Wind speed will be 30-40 kmph in the sea areas around the island. The sea area extending from Trincomalee to Pottuvil via Kankasanturai, Puttalam, Colombo, Galle and Hambantota can be rough at times as the wind speed may increase up to 50-60 kmph at times.

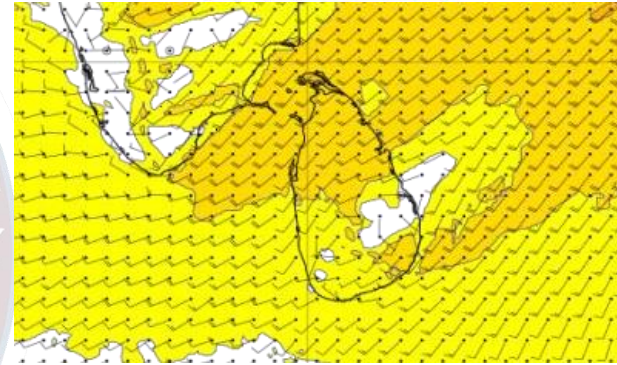
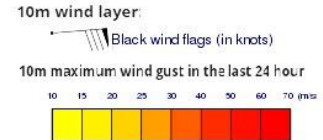
Wind and Rainfall Forecast (Total precipitation for 24 hrs)



Significant wave height (in meters)



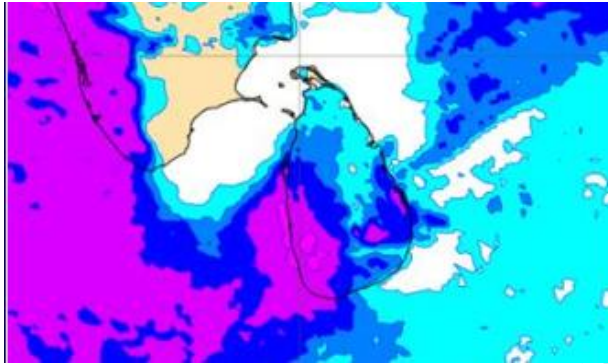
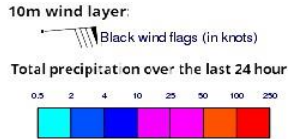
Wind Gust (m/s)



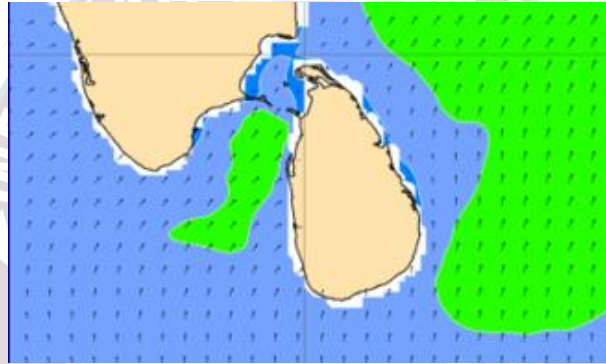
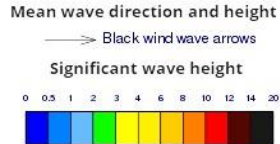
Showers or thundershowers may occur at several places in the sea areas off the coast extending from Puttalam to Matara via Colombo and Galle.

Wind speed will be 30-40 kmph in the sea areas around the island. The sea area extending from Pottuvil to Hambantota and from Puttalam to Kankasanturai via Mannar can be rough at times as the wind speed may increase up to 50-55 kmph at times.

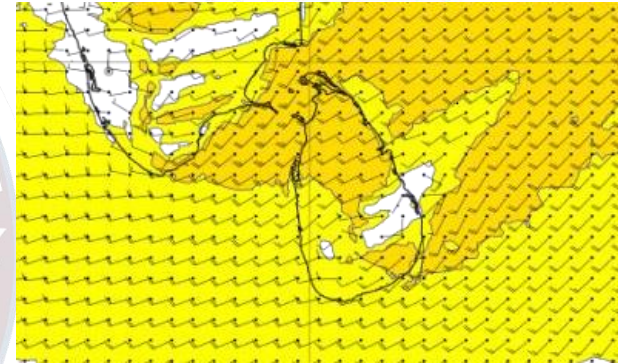
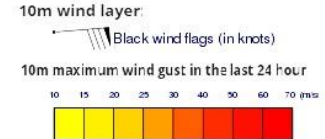
Wind and Rainfall Forecast (Total precipitation for 24 hrs)



Significant wave height (in meters)



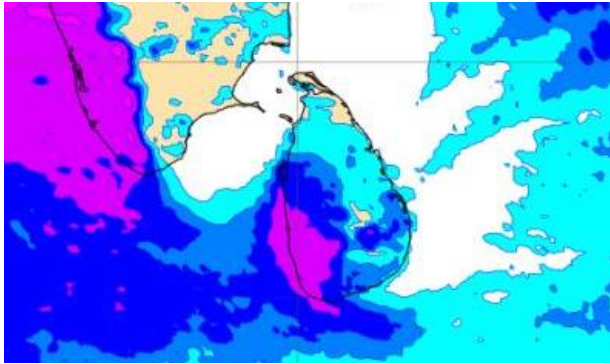
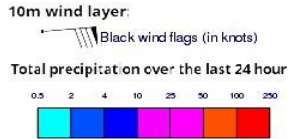
Wind Gust (m/s)



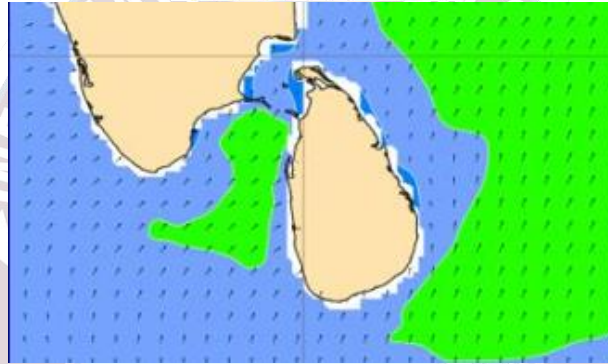
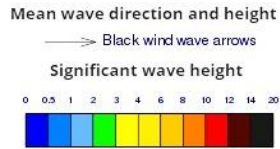
Showers or thundershowers may occur at several places in the sea areas off the coast extending from Puttalam to Matara via Colombo and Galle.

Wind speed will be 30-40 kmph in the sea areas around the island. The sea area extending from Pottuvil to Hambantota and from Puttalam to Kankasanturai via Mannar can be rough at times as the wind speed may increase up to 50-55 kmph at times.

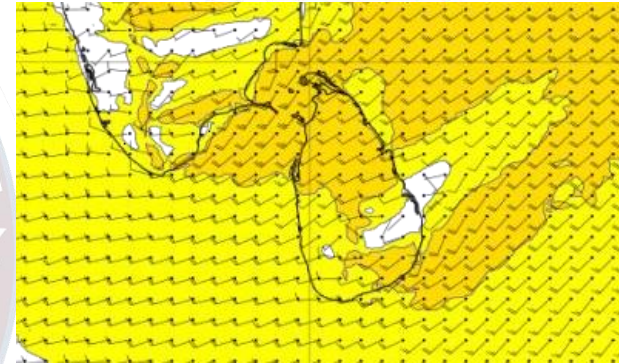
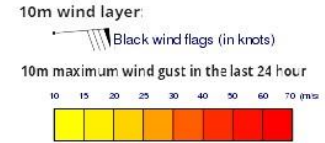
Wind and Rainfall Forecast (Total precipitation for 24 hrs)



Significant wave height (in meters)



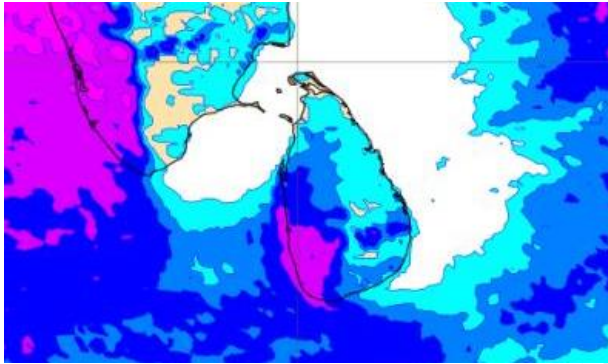
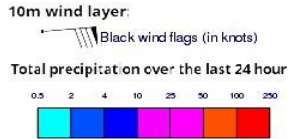
Wind Gust (m/s)



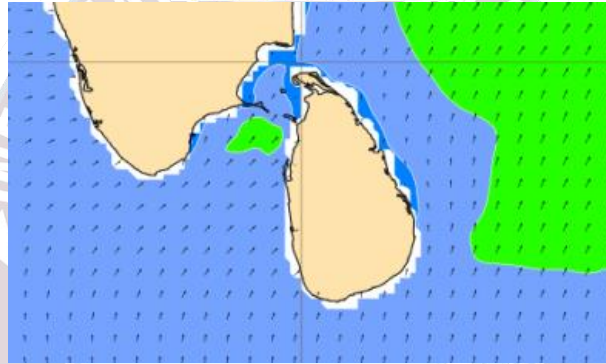
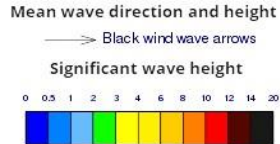
Showers or thundershowers may occur at several places in the sea areas off the coast extending from Puttalam to Matara via Colombo and Galle.

Wind speed will be 30-40 kmph in the sea areas around the island. The sea area extending from Pottuvil to Hambantota and from Puttalam to Kankasanturai via Mannar can be rough at times as the wind speed may increase up to 50-55 kmph at times.

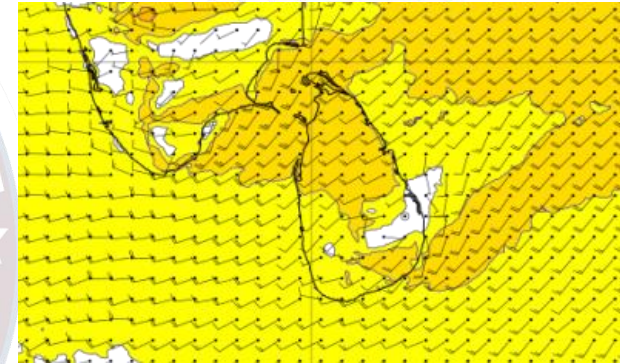
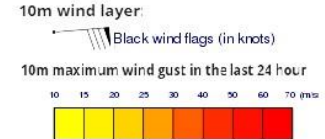
Wind and Rainfall Forecast (Total precipitation for 24 hrs)



Significant wave height (in meters)



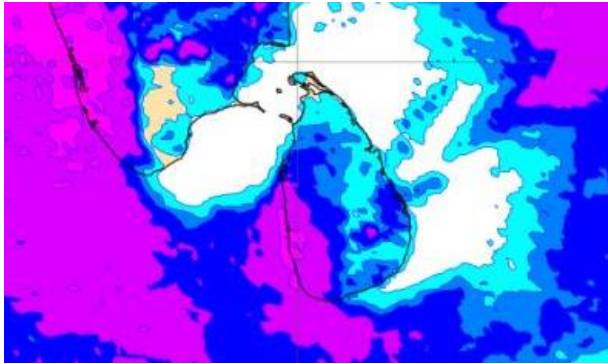
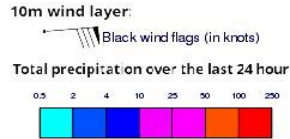
Wind Gust (m/s)



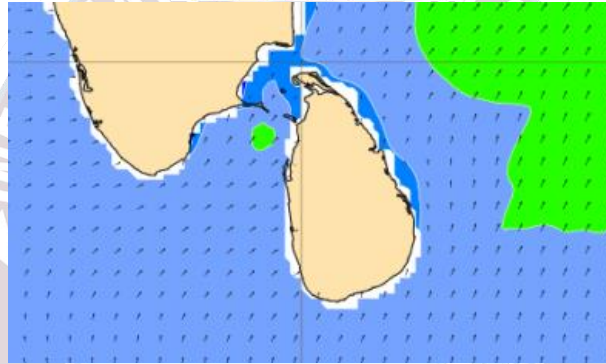
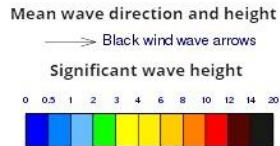
Showers or thundershowers may occur at several places in the sea areas off the coast extending from Puttalam to Matara via Colombo and Galle.

Wind speed will be 30-40 kmph in the sea areas around the island. The sea area extending from Pottuvil to Hambantota and from Puttalam to Kankasanturai via Mannar can be rough at times as the wind speed may increase up to 50-55 kmph at times.

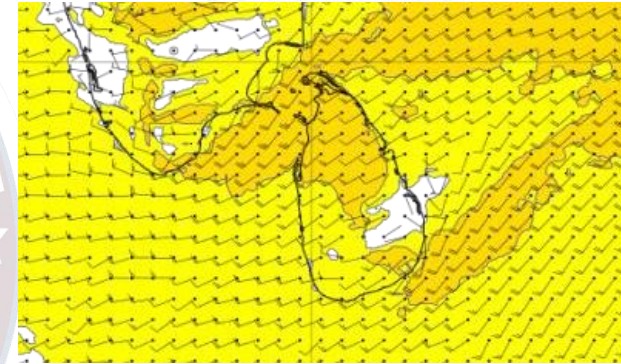
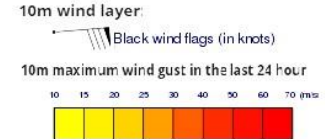
Wind and Rainfall Forecast (Total precipitation for 24 hrs)



Significant wave height (in meters)



Wind Gust (m/s)



Showers or thundershowers may occur at a few places in the sea areas off the coast extending from Puttalam to Matara via Colombo and Galle.

Wind speed will be 30-40 kmph in the sea areas around the island. The sea area extending from Pottuvil to Hambantota and from Puttalam to Kankasanturai via Mannar can be rough at times as the wind speed may increase up to 50-55 kmph at times.



Thank you!